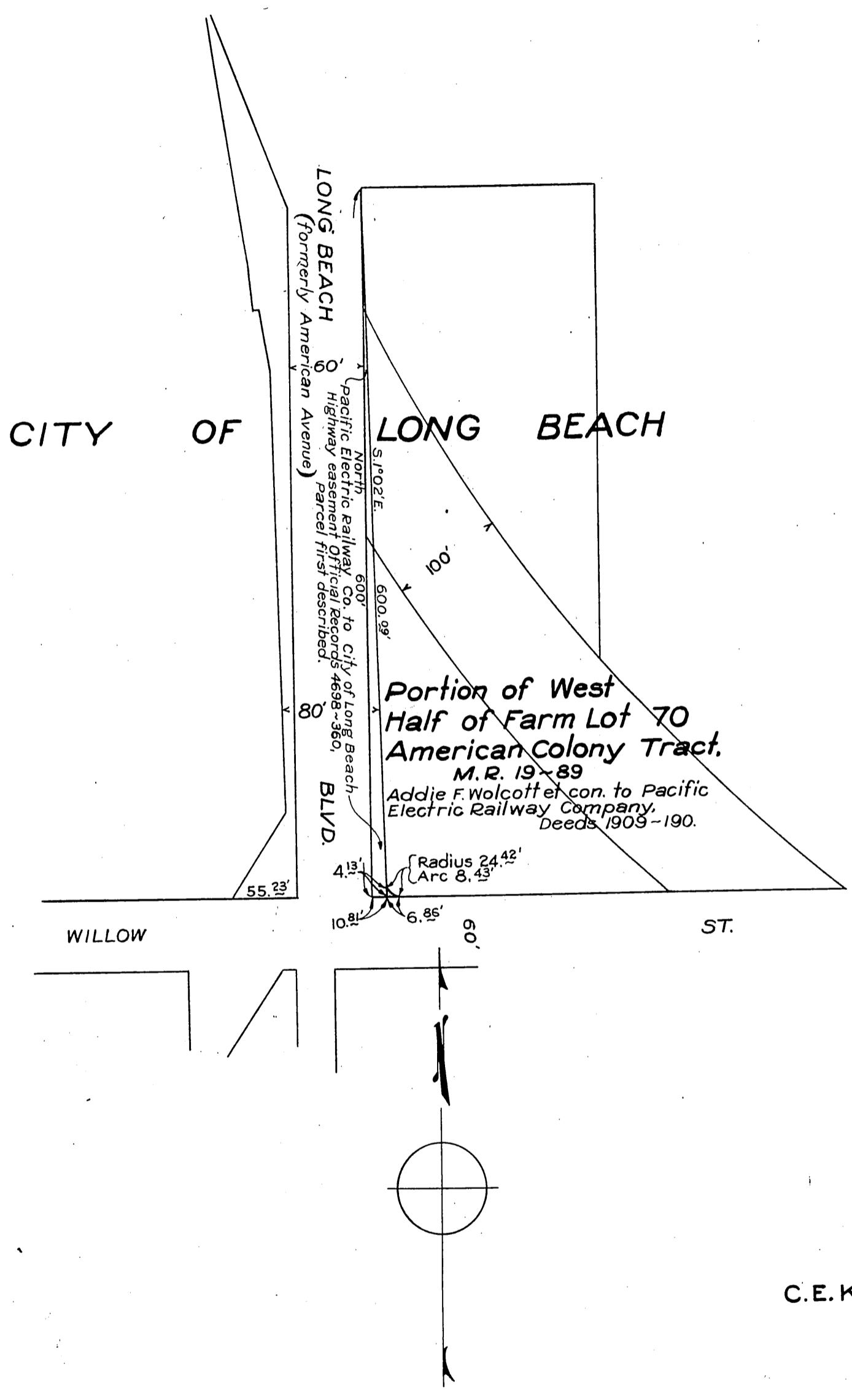


PACIFIC ELECTRIC RAILWAY COMPANY
TO
CITY OF LONG BEACH

ORM-8208-196
37



Portion of West
Half of Farm Lot 70
American Colony Tract.
M.R. 19-89
Addie F. Wolcott et con. to Pacific
Electric Railway Company.
Deeds 1909-190.

C.E.K. 1623-a

Scale:- 1" = 100'

Comp. L.C.

Sht. 30
D:72-253

RECORDED JULY 26, 1929.

O.R. 8208