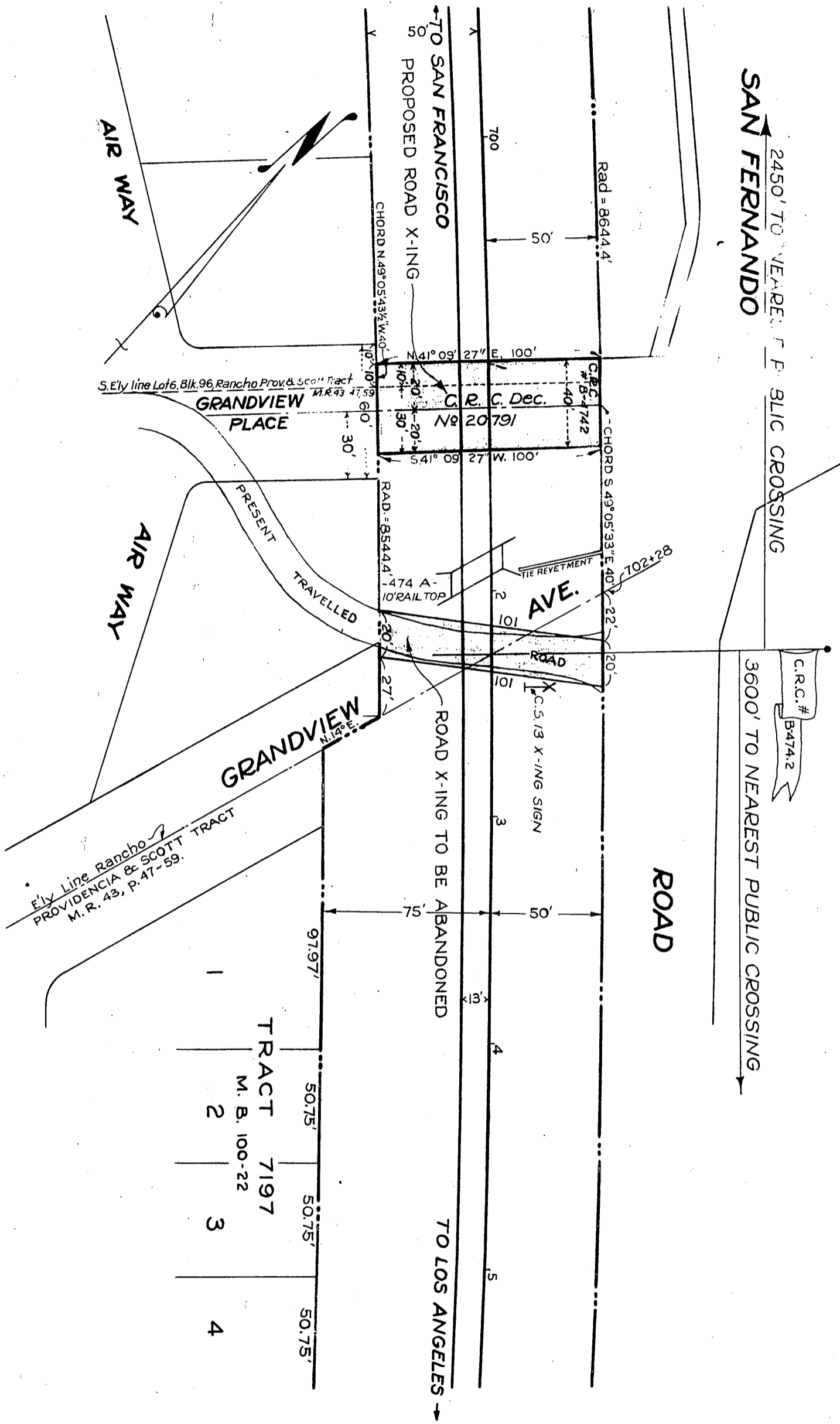


SOUTHERN PACIFIC RAILROAD COMPANY
TO
CITY OF GLENDALE

ORM 9377-320

52



SCALE 1"=50'

- LEGEND -

- Tinted Yellow ~ Road Crossing to be abandoned by City of Glendale.
- Outlined Yellow ~ Proposed Easement to
- Tinted Red ~ Easement Granted to County of L.A. in 1918, D.B. 6682 Pg. 237, (Terminated & Abandoned)
- Brown ~ S.P.R. of W.

Comp. L.C.
C.S.

See DM.6682-242

D:77-III Sht. 40

RECORDED OCT. 25, 1929.

O.R. 9377