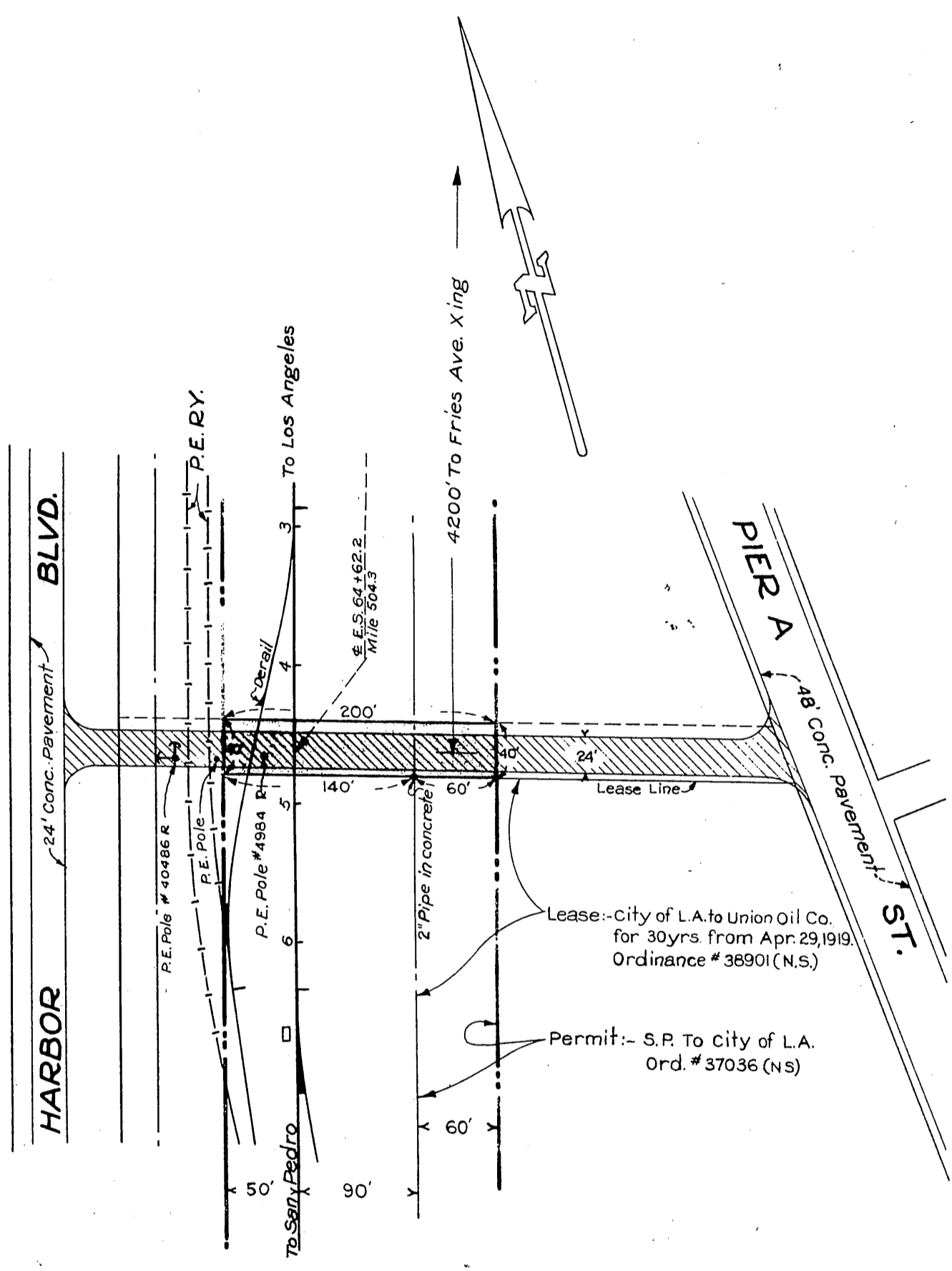


SOUTHERN PACIFIC RAILROAD COMPANY  
TO  
CITY OF LOS ANGELES

ORM-9511-291  
62



Lease:- City of L.A. to Union Oil Co.  
for 30yrs. from Apr. 29, 1919.  
Ordinance # 38901 (N.S.)

Permit:- S.P. To City of L.A.  
Ord. # 37036 (NS)

LEGEND

- Tinted Red ~ Proposed Easement
- Hatched ~ Proposed 7" Pavement
- Brown ~ S.P. R.of W. Line.

Scale 1" = 100'

L.C.  
Comp. C.S.

Sheet 28  
D:75-276

RECORDED NOV. 23, 1929.

O.R. 9511