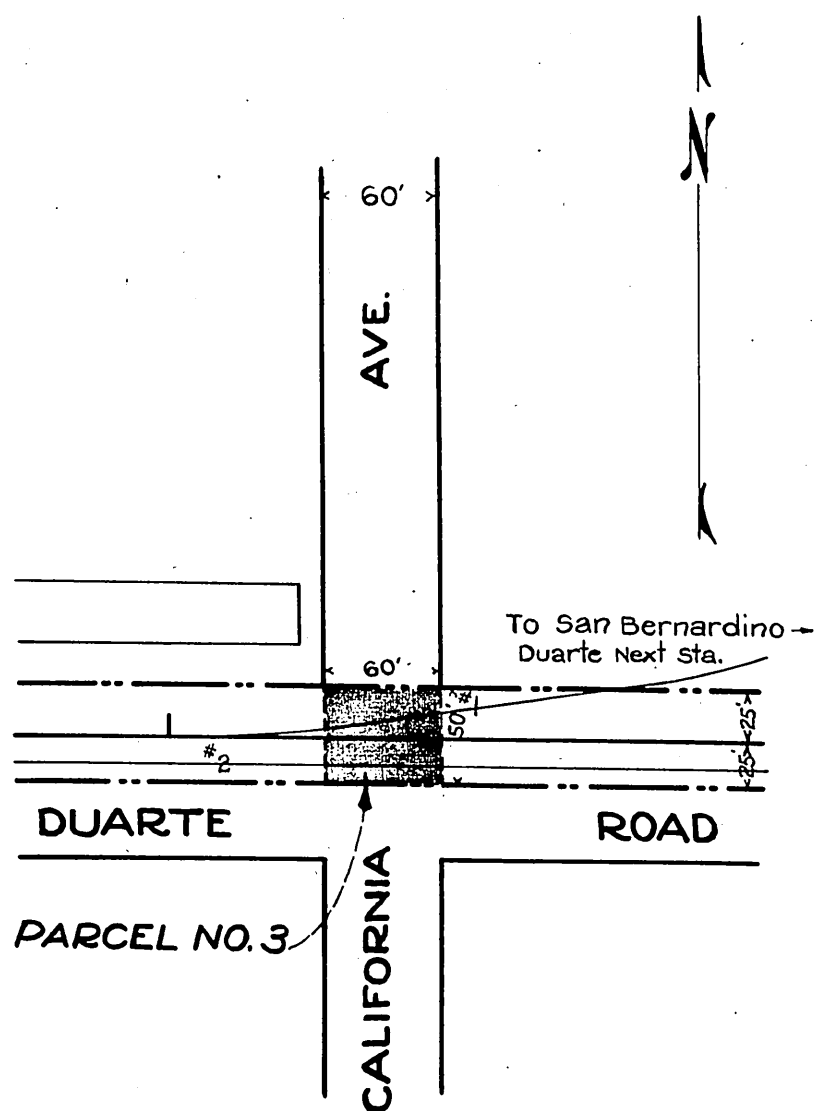
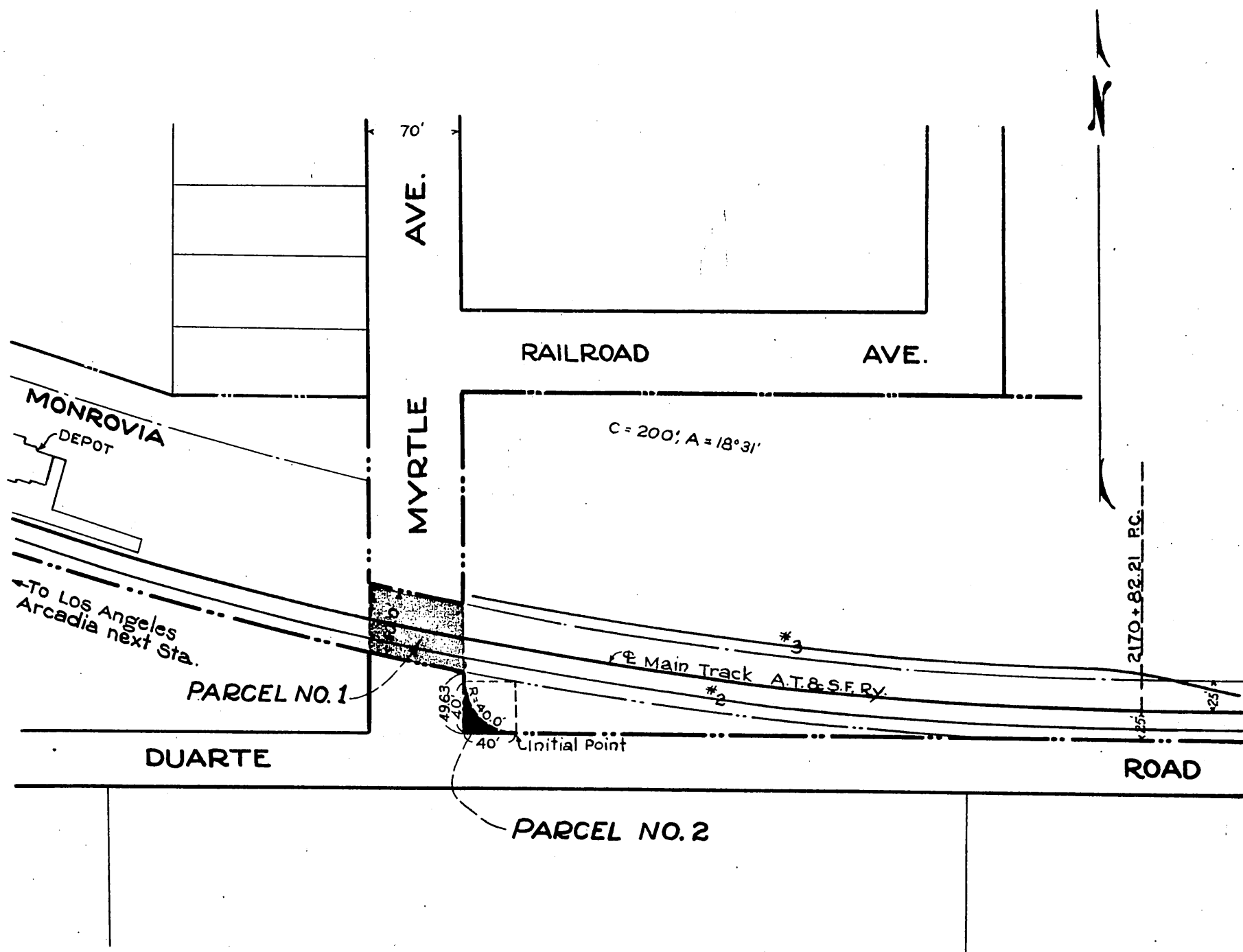


ATCHISON TOPEKA & SANTA FE RY. CO. ORM-9611-122
 TO
 CITY OF MONROVIA
 69



Legend:
 Portion of the Ry. Co's right of way and station grounds required by City of Monrovia for street purposes, shown tinted yellow.

Sht. 45
 A 68
 D:77-214 - D:77-279

RECORDED DEC. 17, 1929.

Comp. I.C.
 C.S.

O.R. 9611