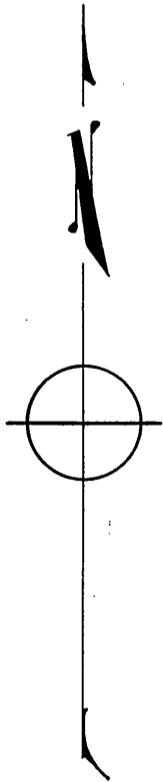
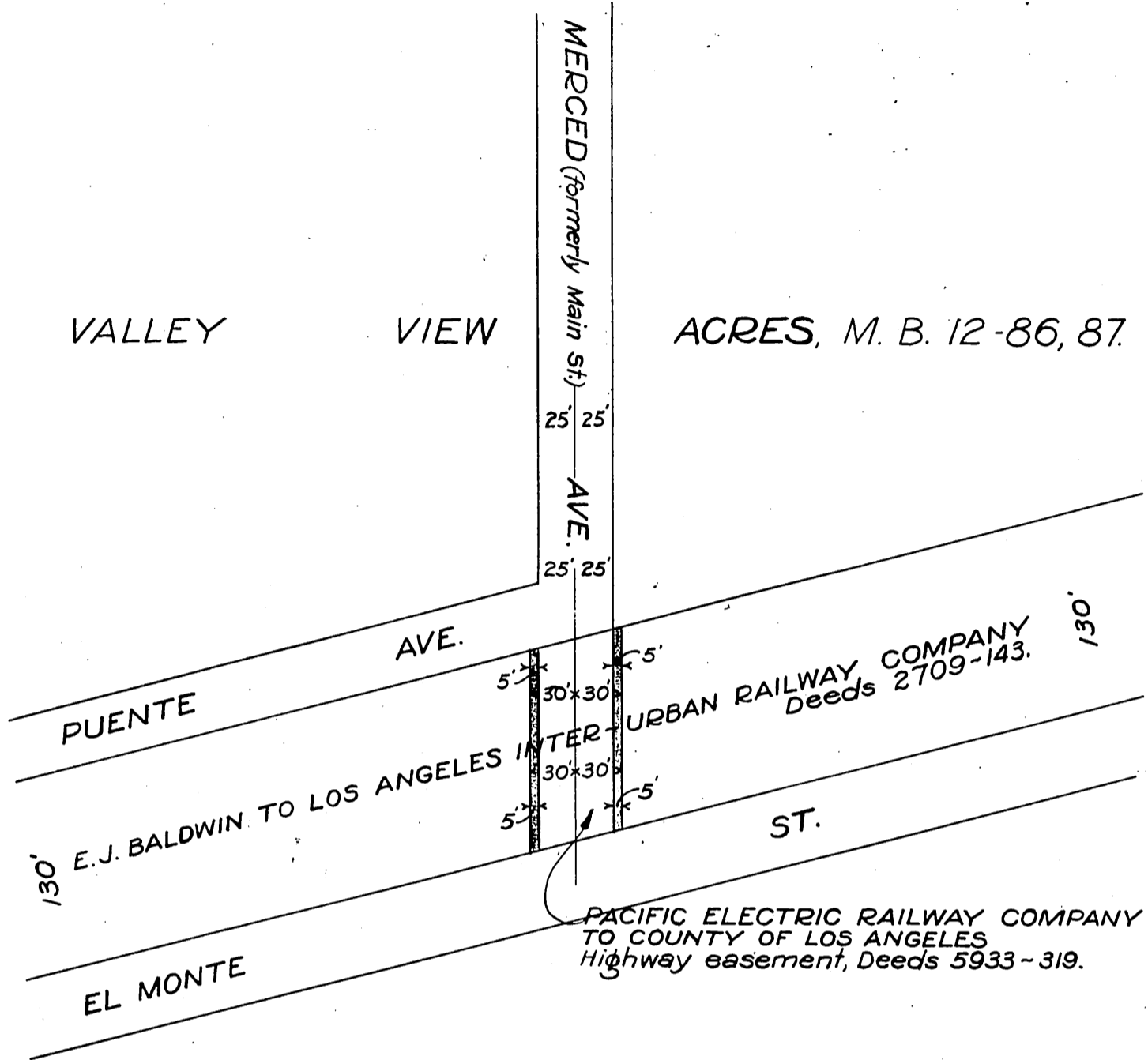


PACIFIC ELECTRIC RAILWAY COMPANY
TO
COUNTY OF LOS ANGELES

ORM-9864-235

79

COUNTY OF LOS ANGELES



C.E.K. 1716

SCALE 1" = 100'

Puente Ave. changed to San Bernardino Rd. D:49-218
El Monte St. changed to Holt Ave. D:49-118
Holt Ave. " " San Bernardino Rd. D:49-218
San Bernardino Rd. " " W. Ramona Blvd. D:49-222

Comp. L.C.
C.S.

D:78-257
Sht. 46

RECORDED APR. 10, 1930.

O.R. 9864