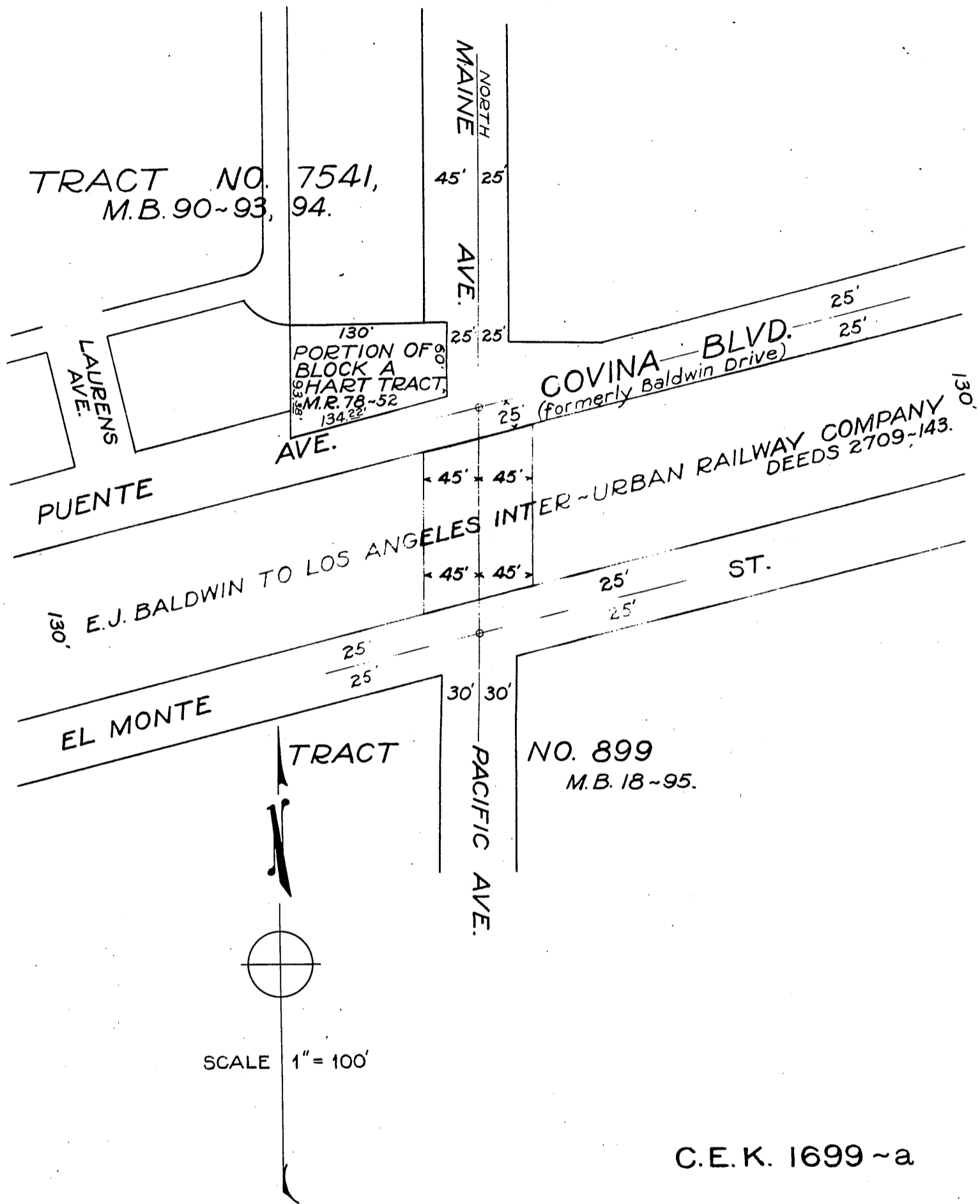


PACIFIC ELECTRIC RAILWAY COMPANY
TO
COUNTY OF LOS ANGELES

ORM-9928-313
80

COUNTY OF LOS ANGELES



Por. of RoW. for Culvert Easement D:23-284, O.R. 11468-89
Puente Ave., Covina Blvd. & El Monte St. chg. to San Bernardino Rd. D: 49-218
San Bernardino Rd. " " Ramona Blvd. D: 49-222

Comp. L.C.
C.S.

Sht. 46
D: 81-65

RECORDED MAY 19, 1930.

O.R. 9928