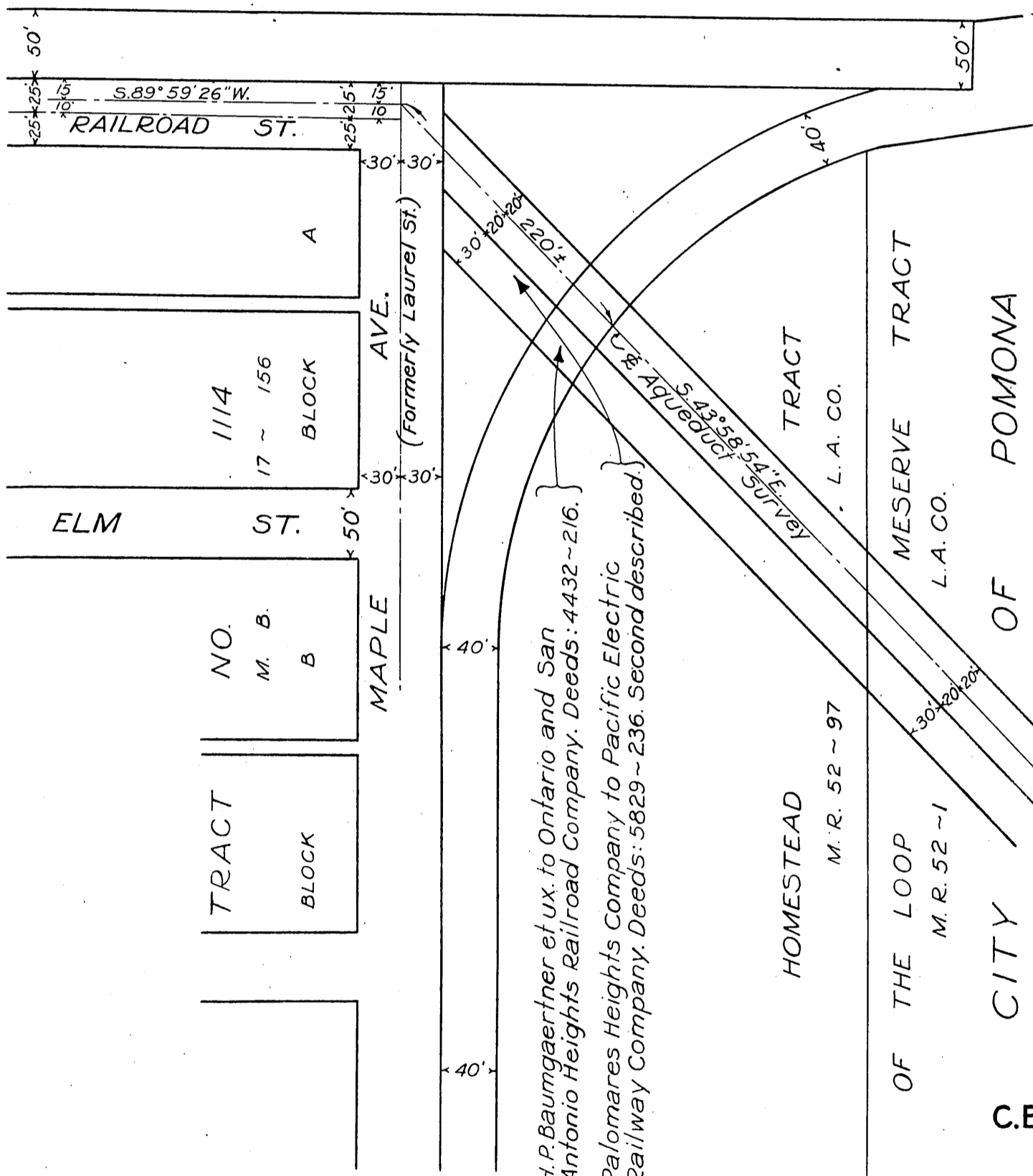
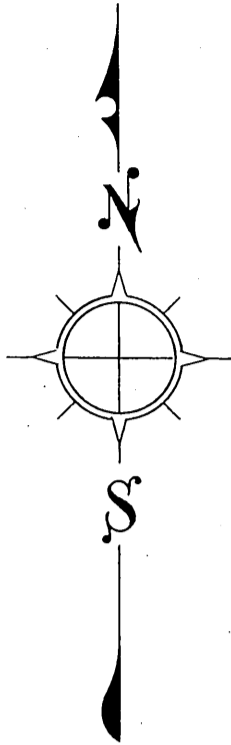


TO
THE METROPOLITAN WATER DISTRICT OF SOUTHERN CALIFORNIA



H.P. Baumgaertner et ux. to Ontario and San Antonio Heights Railroad Company. Deeds: 4432 ~ 216.
 Palomares Heights Company to Pacific Electric Railway Company. Deeds: 5829 ~ 236. Second described.

C.E.K. 1962

BY ~ L.C.
Comp. C.L.

File-37, Part 1
INDEX 49
Scale: ~ 1"=100'

RECORDED - MAY 22, 1936.

O.R.14091