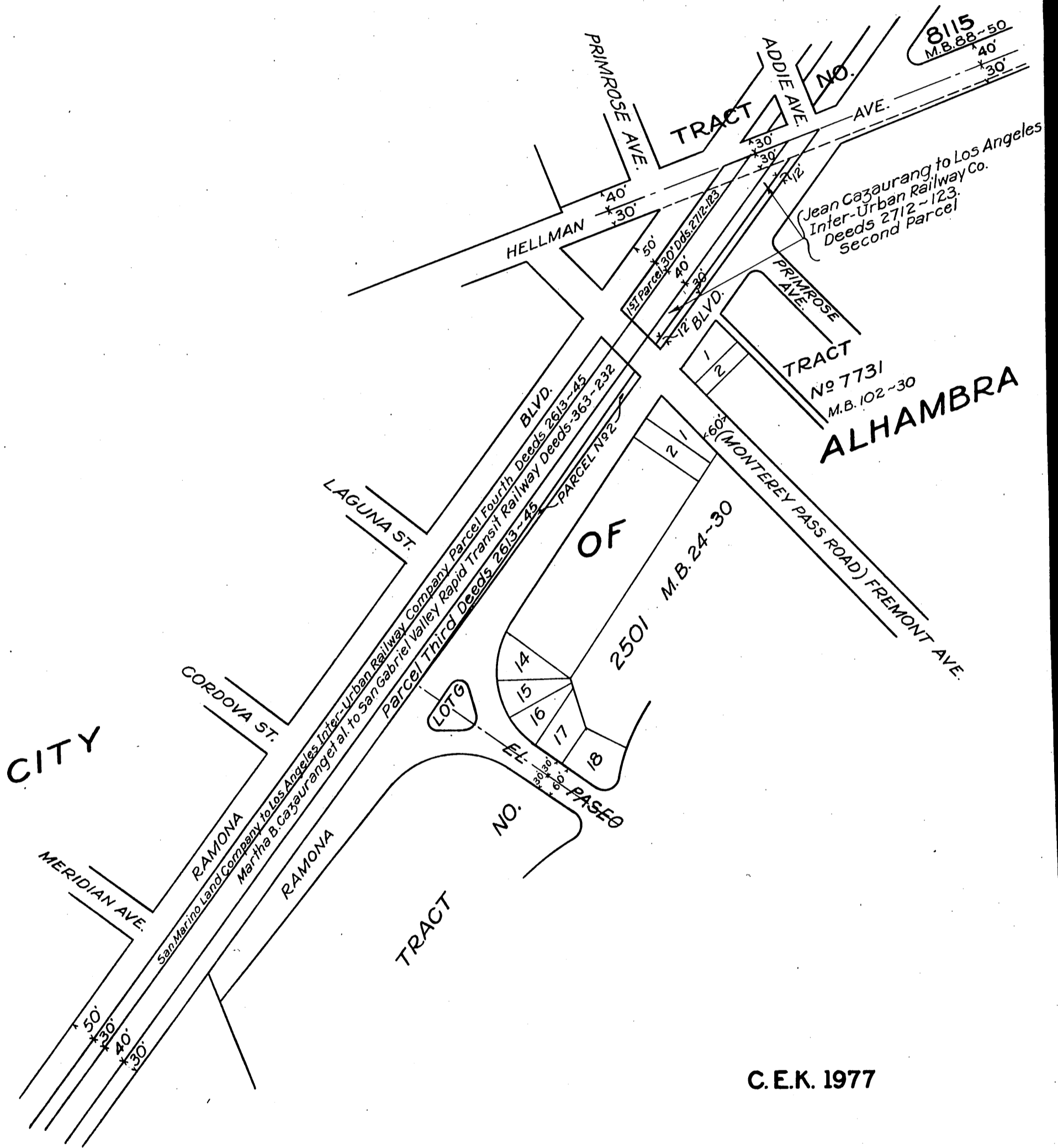


ORM 14267-345

62

PACIFIC ELECTRIC RAILWAY COMPANY  
TO  
CITY OF ALHAMBRA

345



C.E.K. 1977

By L.C.  
Comp. R.F.S.

Scale:- 1"=200'

INDEX 43  
E: 10-171

RECORDED - AUG. 7. 1936.

O.R. 14267