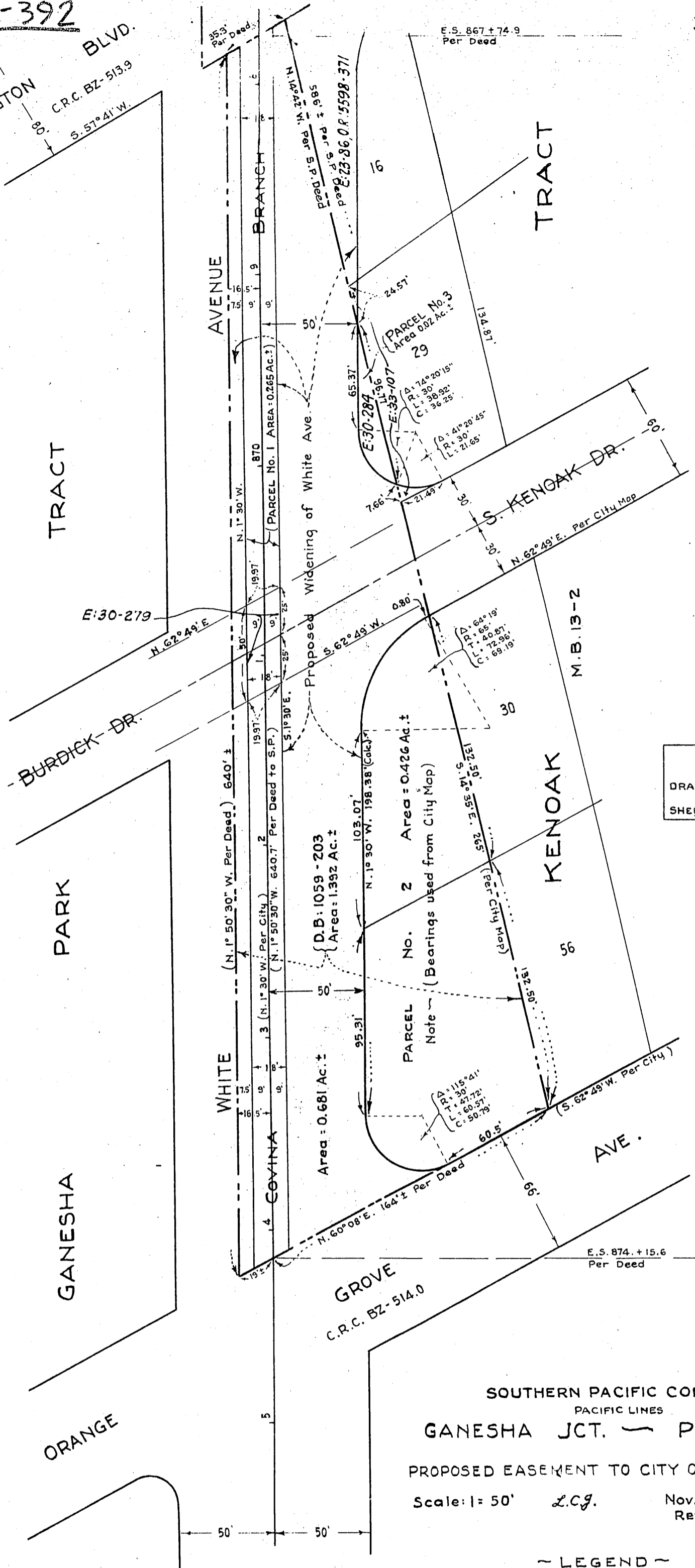


HUNTINGTON BLVD.  
C.R.C. BZ-513.9  
S. 57° 41' W.  
80'



L.A. DIV'N.  
DRAWING D-924  
SHEET No. 1.

SOUTHERN PACIFIC COMPANY  
PACIFIC LINES  
GANESHA JCT. — POMONA.  
PROPOSED EASEMENT TO CITY OF POMONA  
Scale: 1" = 50' L.C.G. Nov. 30, 1937.  
Rev. Oct. 14, 1938.

~ LEGEND ~  
[Tint Box] Tint - Proposed Easement  
[Dashed Line] Sou. Pac. Right of Way Lines

INDEX 49  
E: 30-281

RECORDED - AUG. 15, 1939

O.R. 16614