

Patent dated Feby 13 - 1872
Recorded Vol 7 pp. 531 to 538
Incl. Sent to Sur. Genl. Feby 13, 1872

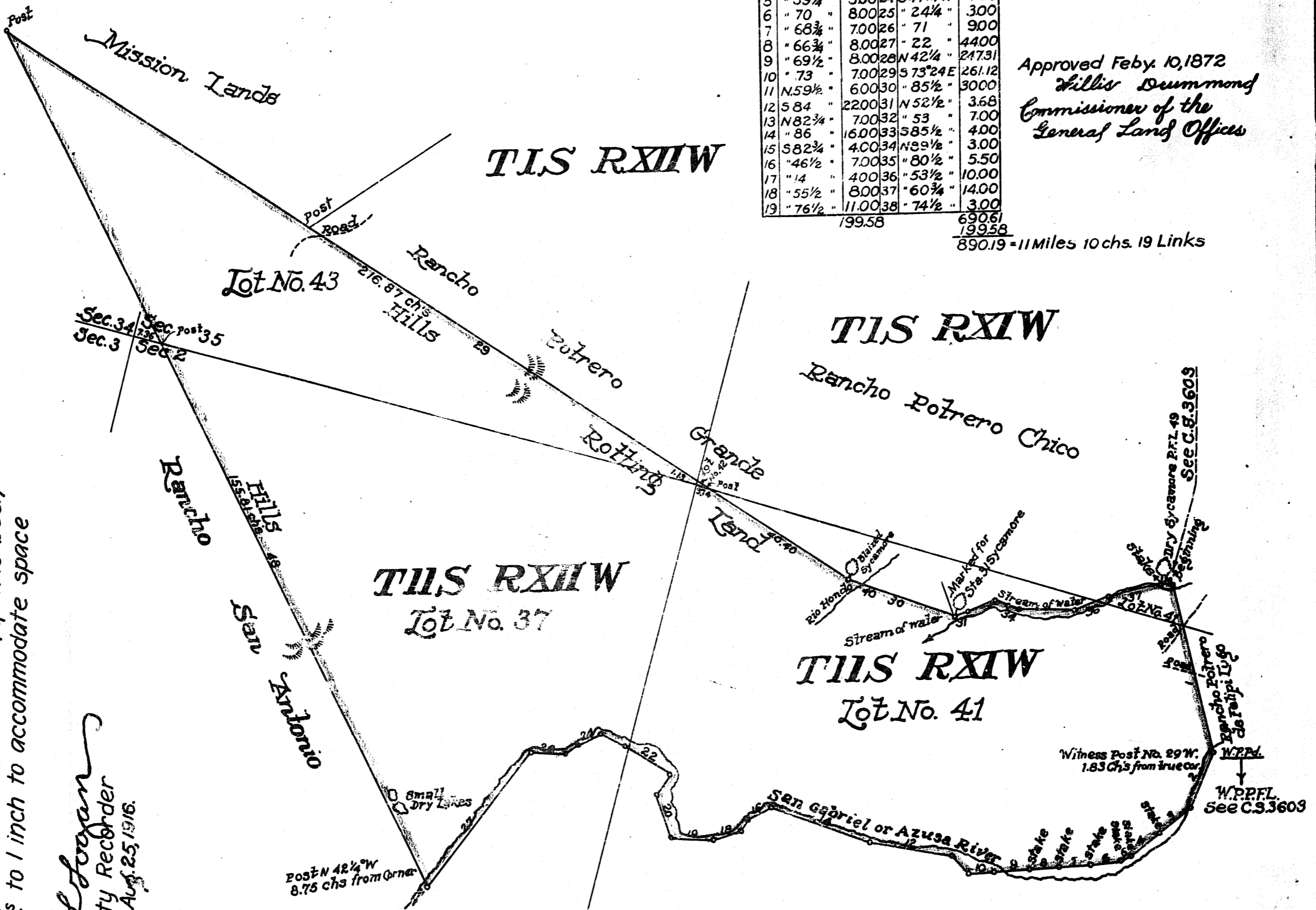
BOUNDARIES

No	Course	Dist	No	Course	Dist
1	S. 29° E.	45.00	20	N 35° W	11.50
2	" 5 1/4 W	14.50	21	" 16 3/4 E	6.50
3	" 28 3/4 "	6.08	22	" 73 1/2 W	14.00
4	" 35 "	8.00	23	" 81 "	7.00
5	" 59 1/4 "	3.00	24	S 47 1/4 W	7.00
6	" 70 "	8.00	25	" 24 1/4 "	3.00
7	" 68 3/4 "	7.00	26	" 71 "	9.00
8	" 66 3/4 "	8.00	27	" 22 "	4.00
9	" 69 1/2 "	8.00	28	N 42 1/4 "	247.31
10	" 73 "	7.00	29	S 73° 24' E	261.12
11	N 59 1/2 "	6.00	30	" 85 1/2 "	30.00
12	S 84 "	22.00	31	N 52 1/2 "	3.68
13	N 82 3/4 "	7.00	32	" 53 "	7.00
14	" 86 "	6.00	33	S 85 1/2 "	4.00
15	S 82 3/4 "	4.00	34	N 89 1/2 "	3.00
16	" 46 1/2 "	7.00	35	" 80 1/2 "	5.50
17	" 14 "	4.00	36	" 53 1/2 "	10.00
18	" 55 1/2 "	8.00	37	" 60 3/4 "	14.00
19	" 76 1/2 "	11.00	38	" 74 1/2 "	3.00
		199.58			690.6
					199.58
					890.19 = 11 Miles 10 chs. 19 Links

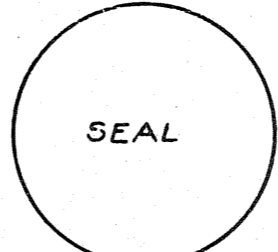
Approved Feby. 10, 1872
Willis Drummond
Commissioner of the
General Land Office

Memorandum only: The scale of this map has been reduced to 30 chs to 1 inch to accommodate space in book.

L. Logan
County Recorder
Aug. 25, 1916.



PLAT
 of the
RANCHO LA MERCED
 finally confirmed to
F.P.F. TEMPLE & AL
 Surveyed under instructions from the
U.S. SURVEYOR GENERAL
 BY
HENRY HANCOCK DEP SURV
 December 1858
 Containing 2363 7/100 Acres
 Scale 20 Chs. to 1 inch
 Var. 23° 30' East.



Rancho San Bartolo
 The Field Notes of the Rancho La Merced and from which this Plat has been made out, have been examined and approved, and are on file in this office.
 U.S. Surveyor General's Office
 San Francisco California
 July 23, 1859
J. H. Mandeville
 U.S. Surv. Genl. Cal.

Note: A notice of the approval of this Plat of Survey has been published in accordance with the Act of Congress of June 4, 1860, in the Los Angeles Star the first publication thereof being on the 25th of August 1860 and the last on the 15th of September 1860 also in the paper named the Land being the San Bernardino Herald the first publication thereof being on the 30th August 1860 and the last on the fourth of October 1860.
 This Plat remained in this office subject to inspection from the date of the approval thereof.

COMP. K.M.O. A.W.S.

A full true and correct copy of the original Plat on file in this office
U.S. Surveyor General's Office
San Francisco California
Jan 13th 1862.

E. F. Beale
U. S. Surv. Genl. Cal.

Surv. Genl. March 1, 1862 P 97. 162

Recorded Jan. 18, 1909

See M. R. 304 ~ 108 & 109
 for boundary line between
 Rancho Potrero Chico &
 Rancho La Merced.
 Co. Sur. 12-6-20 PATENTS 13
 See also C.S. 9259 & 9308 K