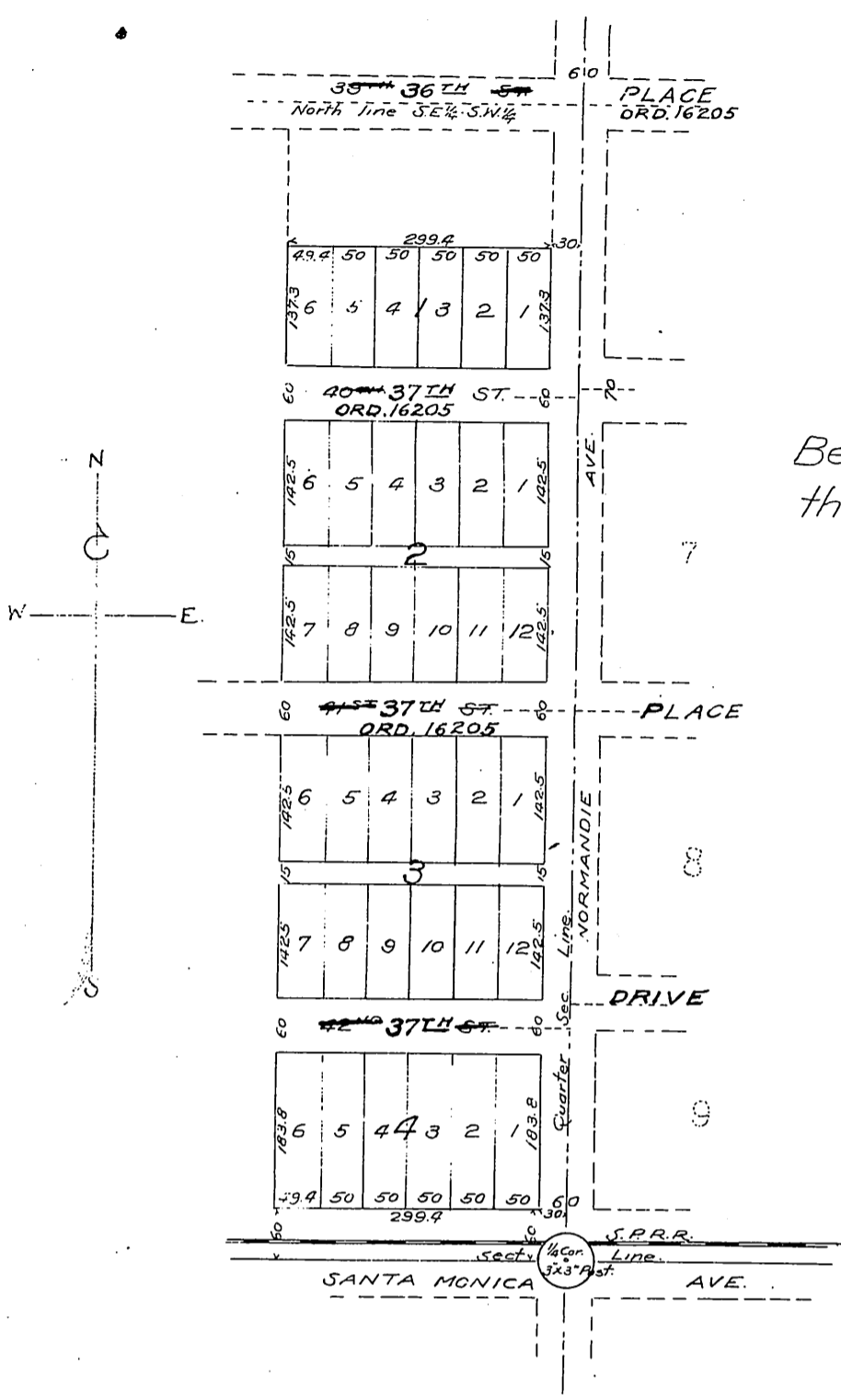


53



PLAT
of the
DODGE TRACT
Being part of the E 1/2 of the S.E. 1/4 of
the S.W. 1/4 of Sec. 1, T. 2 S., R. 14 W. S. B.M.
Los Angeles County, California.
C. A. Dodge, Surveyor.
Scale 200' = 1 inch.

Owner:
J. W. Dodge.

Recorded Apr. 23, 1902.