

**LOS ANGELES COUNTY
DEPARTMENT OF PUBLIC WORKS**

BENCHMARKS



**LANCASTER EAST QUAD
(HI VISTA)**

**2012 ADJUSTMENT
2010 BASELINE
NAVD 88 DATUM FOOT/METER**

PREFACE

The Department of Public Works level net is composed of more than 1,700 miles or 2720 kilometers of levels supporting in excess of 9,000 benchmarks. Previously when a major readjustment of the net was undertaken, to emphasize the complete break with previous elevations, the CY, CG, and CL, series benchmarks were re-labeled DY, DG, and DL, respectively. Beginning in 1993 the Baseline readjustment year will be indicated on Baseline BM's, as indicated below (*). Henceforth all BM numbers will be labeled as a Y, G, or L series that will no longer indicate the major adjustment year.

To facilitate the adjustment, indexing and distribution of the adjusted values of the net, the county territory was divided into 33 quads or areas. For the identification purposes each quad was given a name (i.e. "Rosemead", "La Mirada", and "Santa Fe"...etc). When benchmarks and elevations in the quad are used, the name of the bench and quad must be stated in the description, i.e.:

(*)	BASELINE	90.057	L&BR IN CTR OF CB RET @ NE COR	Y 9191
	(1990)	295.461	LA HABRA BLVD & VALLEY HOME AVE	

It is expected that this general adjustment will for the most part remain sound for 8 to 10 years. Updating constrained adjustments will continue in the future. When a quad is readjusted, new elevations will be published and the date of readjustment will be noted in the benchmark description. Two benchmarks with different adjustment dates will not normally agree with each other.

The basic accuracy of the net is reflected by an indicated field probable error of ± 0.017 feet per mile (4mm per kilometer) of leveling as determined from conditions of closure. However, many years of experience in vertical control in the greater Los Angeles basin and Antelope Valley indicates that because of varying degrees of subsidence and heaving, the true datum is recovered only by obtaining substantial agreement of a number of benchmarks.

The users of this network of benchmarks are invited to assist in its maintenance by notifying this department of cases of obliteration, apparent mistakes in descriptions or elevations, and the disturbance of benchmarks.

Datum: North American Vertical Datum of 1988 (NAVD88)

Note: NAVD 1988 minus approximately 3.0 feet (90 cm) equals NGVD 1929 Datum. For more accurate equations at individual benchmarks refer to previous publications.

Abbreviations used in Benchmark Descriptions

Abbreviations	Descriptions	Abbreviations	Descriptions
<i>ABUT</i>	Abutment	<i>LT</i>	Lead and Tack
<i>ALG</i>	Along	<i>LACE</i>	Los Angeles City Engineer
<i>ANG PT</i>	Angle Point	<i>LACS</i>	La County Engineer
<i>B/W</i>	Back of Walk	<i>LAFC</i>	La County Flood Control
<i>BCR</i>	Begin Curb Return	<i>L&BN</i>	Lead and Bench Nail
<i>BC</i>	Begin Curve	<i>L&BR</i>	Lead and Brad
<i>BLDG</i>	Building	<i>L&N</i>	Lead and Nail
<i>BM</i>	Benchmark	<i>L&SPK</i>	Lead and Spike
<i>BT SPK</i>	Boat or Bolt Spike	<i>L&T</i>	Lead and Tack
<i>BR CAP</i>	Brass Cap Monument	<i>MCR</i>	Middle Curb Return
<i>C B</i>	Catch Basin	<i>MKD</i>	Marked
<i>CTR</i>	Center	<i>MC</i>	Middle Curve
<i>C/L</i>	Centerline	<i>MON</i>	Monument
<i>C/L INT</i>	Centerline Intersection	<i>N/O</i>	North of
<i>C/L PROD</i>	Centerline Produced	<i>NR</i>	Near
<i>CONC</i>	Concrete	<i>OPP</i>	Opposite
<i>COR</i>	Corner	<i>PI</i>	Point of Intersection
<i>COE</i>	Corps of Engineers	<i>PK&W</i>	PK Nail and Washer
<i>CULV</i>	Culvert	<i>P/L</i>	Property Line
<i>CYN</i>	Canyon	<i>POST</i>	Point on Simi-Tangent
<i>CB</i>	Curb	<i>PP</i>	Power Pole
<i>CS MON</i>	Co. Eng. Monument	<i>PVMT</i>	Pavement
<i>CT SPK</i>	Cut Spike	<i>PROD</i>	Produced
<i>DPW</i>	Dept of Public Works	<i>RD</i>	Road
<i>DR</i>	Driveway	<i>RDBM</i>	Road Dept Benchmark
<i>E/O</i>	East of	<i>RDBM TAG</i>	Road Dept Benchmark Tag
<i>ECR</i>	End Curb Return	<i>RR</i>	Railroad
<i>EC</i>	End Curve	<i>R/W</i>	Right of Way
<i>ENT</i>	Entrance	<i>SDMH</i>	Storm Drain Manhole
<i>FL</i>	Flow line	<i>SMH</i>	Sewer Manhole
<i>FTG</i>	Footing	<i>SPK</i>	Spike
<i>FRWY</i>	Freeway	<i>ST&W</i>	Spike Tin and Washer
<i>F/W</i>	Front of Walk	<i>S/O</i>	South of
<i>GAR</i>	Garage	<i>TP</i>	Telephone Pole
<i>HDWL</i>	Head Wall	<i>USC&GS</i>	US Coast and Geodetic Survey
<i>HSE</i>	House	<i>USGS</i>	US Geological Survey
<i>HWY</i>	Highway	<i>WK</i>	Walk
<i>INT</i>	Intersection	<i>W/O</i>	West of
<i>IP</i>	Iron Pipe		

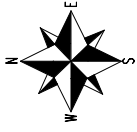
SAN BERNARDINO

COUNTY

COUNTY

KERN

LANCASTER EAST QUAD



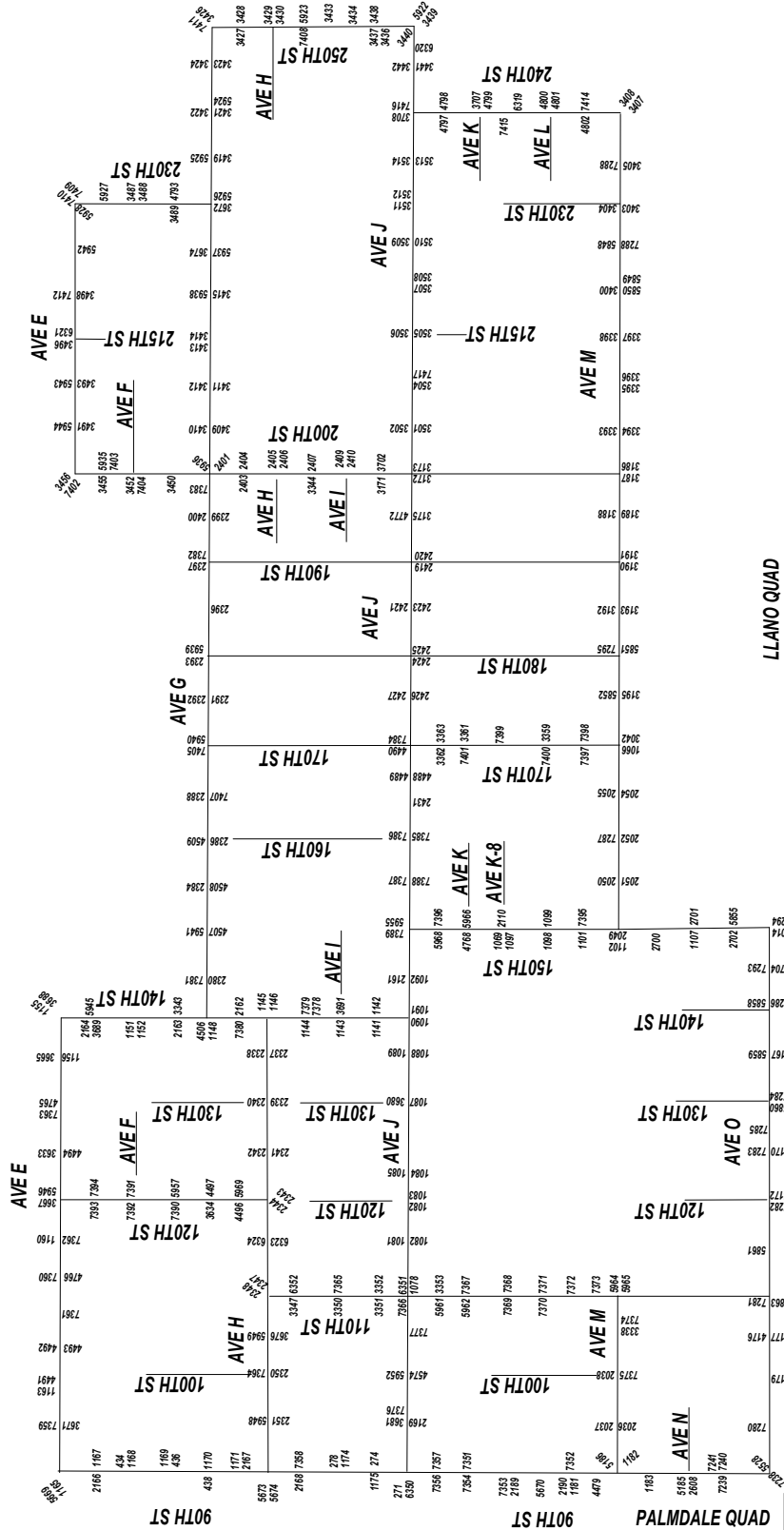
LANCASTER QUAD



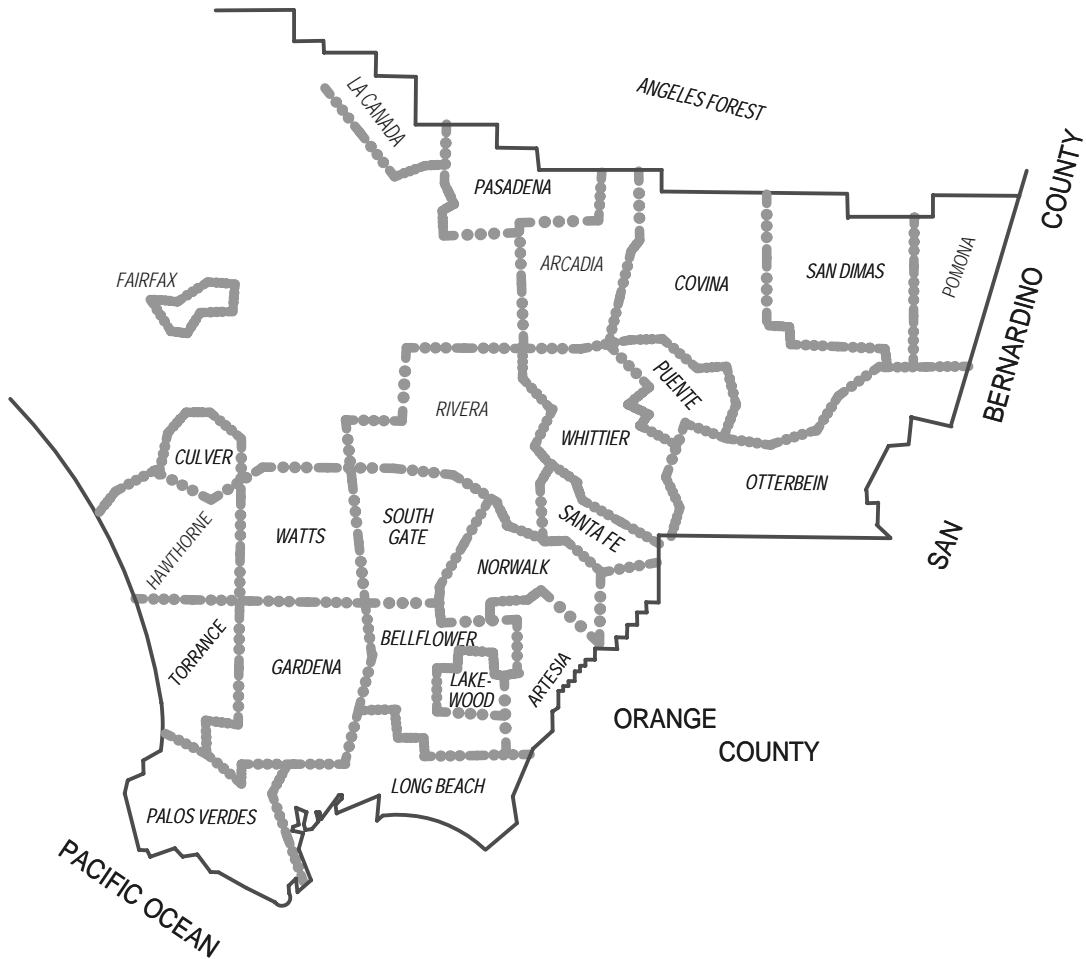
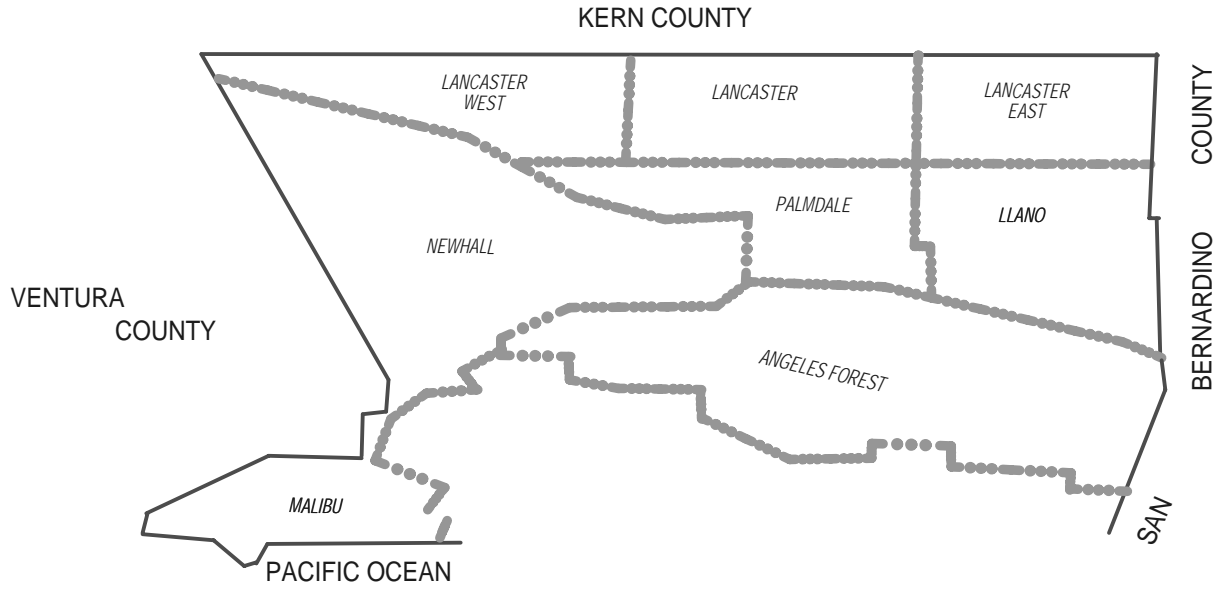
LLANO QUAD



PALMDALE QUAD



QUAD COVERAGE INDEX MAP



QUAD YEAR	ELEV FOOT/METER	DESCRIPTION	BM NUMBER
BASELINE (2010)	2,443.195 744.688	CS MON IN WELL 15" DN @ C/L INT 90TH ST E & AVE J MKD (1/4 SEC 18,17,19,20,T7N,R10W,1926)	L 271
BASELINE (2010)	2,425.567 739.315	CS MON IN WELL 20" DN @ C/L INT 90TH ST E & AVE I-8 MKD (1/4 SEC 17,18,T7N,R10W)	L 274
BASELINE (2010)	2,412.918 735.460	CS MON IN WELL 10" DN @ C/L INT 90TH ST E & AVE I MKD (CO SURV 7,8,17,18,T7N,R10W)	L 278
BASELINE (2010)	2,355.353 717.914	CS MON 15" DN @ C/L INT 90TH ST E & AVE F MKD (CO SURV 30,29,31,32,R10W,T8N,RE 2177)	L 434
BASELINE (2010)	2,365.710 721.071	2" IP W/CONC PLUG & BT SPK IN WELL 15" DN @ C/L INT 90TH ST E & AVE F-8	L 436
BASELINE (2010)	2,374.688 723.807	RD MON IN WELL 8" DN @ SE COR 90TH ST E & AVE G 30' E & 40' S/O C/L INT MKD (1958) MKR POST 2' E/O MON	L 438
BASELINE (2010)	2,649.466 807.560	RDBM MON 6" DN 5' NE/O PP (#799921) 38' N/O C/L AVE O & 364' W/O 150TH ST E MKD (1960) MKR POST 2' N/O MON	L 1014
BASELINE (2010)	2,587.428 788.650	CSBM MON FLUSH @ SW COR AVE M & 170TH ST E 125' S & 23' W/O C/L INT MKD (BM 106-90 1959) MKR POST ON W SIDE MON (BENT OVER)	L 1066
LANCASTER (EAST) (2012)	2,564.740 781.735	USGS MON 3" DN 6' SW/O PP #423619E 26' S/O C/L AVE K-8 & 250' W C/L 170TH ST E MKD (LS 17 1929) MKR POST 2' W/O MON	L 1069
LANCASTER (EAST) (2012)	2,459.981 749.804	RDBM MON IN WELL W/COVER 5' W/O PP (NO#) 30' N/O C/L AVE J & 200' E/O C/L FUT 105TH ST E	L 1077
LANCASTER (EAST) (2012)	2,453.898 747.950	CS MON IN WELL 15" DN @ C/L INT AVE J & 110TH ST E MKD (CO SURV 15,16,21,22,T7N,R10W,1925)	L 1078
LANCASTER (EAST) (2012)	2,461.347 750.221	RDBM MON IN WELL W/COVER 3' E/O PP (NO#) 30' N/O C/L AVE J & 105' W/O C/L FUT 115TH ST E	L 1080
LANCASTER (EAST) (2012)	2,459.839 749.761	RDBM MON IN WELL, 27' N & 190' E/O CL INT 115TH ST E & AVE J, MKR POST 2' N/O MON	L 1081
LANCASTER (EAST) (2012)	2,461.619 750.304	RDBM MON IN WELL, 27' N & 60' W/O CL INT 120TH ST E & AVE J, 12' E/O PP#918598E	L 1082
LANCASTER (EAST) (2012)	2,460.079 749.834	RDBM MON IN WELL 18" BELOW SURFACE 6' E/O PP #4118695E 30' N/O C/L AVE J & 195" E/O C/L FUT 120TH ST E	L 1083
LANCASTER (EAST) (2012)	2,464.932 751.314	RDBM MON IN WELL, 27' N & 180' W/O CL INT 125TH ST E & AVE J, 6.5' E/O PP#1048301E, 2' S/O MKR POST	L 1084
LANCASTER (EAST) (2012)	2,465.841 751.591	RDBM MON IN WELL, 27' N & 145' E/O CL INT AVE J & 125TH ST E, 6.5' W/O PP#1014867E, 2' S/O MKR POST	L 1085
LANCASTER (EAST) (2012)	2,468.657 752.449	CS MON IN WELL 2' DN @ C/L INT AVE J & 130TH ST E MKD (CO SURV 13,14,23,24,T7N,R10W,RE 2177)	L 1087
LANCASTER (EAST) (2012)	2,476.459 754.827	CS MON IN WELL 2' DN @ C/L INT AVE J & 135TH ST E MKD (1/4 COR 13,24,T7N,R10W)	L 1088

QUAD YEAR	ELEV FOOT/METER	DESCRIPTION	BM NUMBER
LANCASTER (EAST) (2012)	2,480.114 755.941	RDBM MON IN WELL, 36' N & 360' E/O CL INT AVE J & 135TH ST E, 5' NE/O PP#1014874E	L 1089
LANCASTER (EAST) (2012)	2,487.098 758.070	CS MON IN WELL 15" DN @ C/L INT AVE J & 140TH ST E MKD (13,24,18,19,T7N,R10W,R9W)	L 1090
LANCASTER (EAST) (2012)	2,490.078 758.978	CSBM MON 6" UP 3' W/O PP #101488E @ NW COR AVE J & 140TH ST E 90' N & 30' W/O C/L INT MKD (BM 106-102 1959)	L 1091
LANCASTER (EAST) (2012)	2,491.399 759.381	CSBM MON 6" UP 39' S/O C/L AVE J NR C/L 145TH E 57' S/O PP #390449E MKD (BM 106-101 1959)	L 1092
LANCASTER (EAST) (2012)	2,533.854 772.321	RDBM MON IN WELL 2' BELOW SURFACE 100' S & 35' E/O C/L INT 150TH ST E & AVE K-8 MKD (1960) MKR POST 2' E/O MON	L 1097
LANCASTER (EAST) (2012)	2,551.116 777.583	RDBM MON IN WELL FLUSH (6" BELOW LID) 100' N & 36' E/O C/L INT 150TH ST E & AVE L MKD (1960) MON 8' E/O PP (#2365951E)	L 1098
LANCASTER (EAST) (2012)	2,550.192 777.301	CS MON IN WELL 20" DN @ C/L INT 150TH ST E & AVE L MKD (CO SURV 29,30,31,32,T7N,R9W,1927)	L 1099
LANCASTER (EAST) (2012)	2,563.737 781.429	CS MON IN WELL 10" DN @ C/L INT 150TH ST E & AVE L-8 MKD (1/4 COR 31,32,T7N,R9W,RE 5869)	L 1101
BASELINE (2010)	2,578.369 785.889	CS MON IN WELL 8" DN @ C/L INT AVE M & 150TH ST E MKD (SEC COR 31,32,5,6,T6N,T7N,R9W)	L 1102
BASELINE (2010)	2,606.083 794.336	CS MON IN WELL 2.5' DN @ C/L INT 150TH ST E & AVE N MKD (5,6,7,8,T7N,R9W)	L 1107
LANCASTER (EAST) (2012)	2,472.581 753.645	CS MON IN WELL 18" DN @ C/L INT 140TH ST E & PROP AVE I-8 105' S/O PP #1014890E MKD (1/4 COR 13,18,R9W,T7N)	L 1141
LANCASTER (EAST) (2012)	2,471.830 753.416	CSBM MON 6" UP 33' W/O C/L 140TH ST E & 690' N/O AVE I-8 4' S/O PP #1014892E MKD (BM 106- 103 1959) MKR POST 2' S/O MON	L 1142
LANCASTER (EAST) (2012)	2,462.109 750.453	CS MON IN WELL 25" DN @ C/L INT 140TH ST E & FUT AVE I MKD (SEC COR 12,7,13,18,RE 2177)	L 1143
LANCASTER (EAST) (2012)	2,452.420 747.500	CS MON IN WELL 9" DN @ C/L INT 140TH ST E & AVE H-8 225' S/O S SIDE PROD HSE #45615 MKD (1/4 COR 12,7,R10W,R9W,T7N,RE 2177)	L 1144
LANCASTER (EAST) (2012)	2,444.829 745.186	CSBM MON 6" UP 3' W/O PP #767471E @ NW COR 140TH ST E & AVE H 33' W & 69' N/O C/L INT MKD (BM 106-106 1959)	L 1145
LANCASTER (EAST) (2012)	2,443.354 744.737	CS MON IN WELL 20" DN @ C/L INT 140TH ST E & AVE H MKD (SEC COR 1,6,12,7,R10W,R9W,T7N)	L 1146
LANCASTER (EAST) (2012)	2,454.349 748.088	CSBM MON 6" UP @ NW COR 140TH ST E & AVE G 60' W & 33' N/O C/L INT MKD (BM 106-108 1959) MKR POST 2' E/O MON	L 1148
LANCASTER (EAST) (2012)	2,463.511 750.880	CSBM MON 6" UP 50' E C/L 140TH ST E & 63' N/O C/L FUT AVE F MKD (BM 106-110 1959) WOOD POST 10" UP 10' S/O MON	L 1151
LANCASTER (EAST) (2012)	2,461.043 750.128	CS MON IN WELL 10" DN @ C/L INT 140TH ST E & FUT AVE F 70' NW/O 2" IP & PLUG 6" UP MKD (SEC COR 25,30,31,36,R10W,R9W,T8N)	L 1152
LANCASTER (EAST) (2012)	2,427.163 739.802	CS MON IN WELL 6" DN @ C/L INT 140TH ST E & AVE E MKD (CO SURV 19,24,25,30,R10W,R9N,T8N)	L 1155

QUAD YEAR	ELEV FOOT/METER	DESCRIPTION	BM NUMBER
LANCASTER (EAST) (2012)	2,374.713 723.815	CSBM MON FL 45' S/O C/L AVE E ON C/L PROD 135TH ST E MKD (BM 106-113 1959) MKR POST 2' E MON	L 1156
LANCASTER (EAST) (2012)	2,363.700 720.458	CSBM MON 6" UP 28' N/O C/L AVE E & 259" W/O 115TH ST E 51' E/O C/L DIRT RD TO HSE #11337 MKD (BM 106-117 1959) MKR POST 2' N/O MON	L 1160
LANCASTER (EAST) (2012)	2,350.261 716.362	CSBM MON 6" UP 48' N & 22' E/O C/L INT AVE E & 100TH ST E MKD (BM 106-120 1959)	L 1163
BASELINE (2010)	2,343.530 714.310	CSBM MON 6" UP 46' S & 32' E/O C/L INT AVE E & 90TH ST E MKD (BM 106-22 1969)	L 1165
BASELINE (2010)	2,348.365 715.784	RDBM TAG IN CONC PAD FLUSH 50' S & 50' E/O C/L INT 90TH ST E & AVE E-8 MKR POST 2' E/O MON	L 1167
BASELINE (2010)	2,357.164 718.466	CSBM MON FL 30' N & 72' E/O C/L INT AVE F & 90TH ST E MKD (BM 116-6 1961) MKR POST 2' S/O MON	L 1168
BASELINE (2010)	2,366.490 721.308	CSBM MON 2" UP 75' N & 30' E/O C/L INT 90TH ST E & AVE F-8 MKD (BM 116-5 1961) MKR 2' W MON	L 1169
BASELINE (2010)	2,375.802 724.147	CSBM MON 3" UP 70' S & 27' W/O C/L INT 90TH ST E & AVE G MKD (116-4 1961) MKR 2' E/O MON	L 1170
BASELINE (2010)	2,384.421 726.774	CSBM MON 3" UP 20' S & 80' E/O C/L INT 90TH ST E & AVE G-8 MKD (BM 116-3 1961) MKR POST 10" N/O MON (BENT)	L 1171
BASELINE (2010)	2,414.431 735.921	CSBM MON FL 30' S & 68' W/O C/L INT 90TH ST E & AVE I 3' E/O PP #955497E MKD (BM 107-25 1961) MKR POST 3' E/O MON	L 1174
BASELINE (2010)	2,425.177 739.196	CSBM MON FL 550' N & 35' E/O C/L INT 90TH ST E & AVE I-8 MKD (BM 107-25 1961) MKR 3' E/O MON	L 1175
BASELINE (2010)	2,516.203 766.941	CSBM MON 3" UP 35' S & 34' E/O C/L INT 90TH ST E & AVE L-8 MKD (BM 107-19 1961)	L 1181
BASELINE (2010)	2,528.922 770.818	CS BM MON 4" UP @ NE COR AVE M & 90TH ST E 36' N & 36' E/O C/L INT MKD (BM 107-18 1961)	L 1182
BASELINE (2010)	2,539.567 774.062	CSBM MON 4" UP @ NE COR 90TH ST E & AVE M-8 40' N & 38' E/O C/L INT MKD (BM 107-17 1961) MKR POST 3' E/O MON	L 1183
LANCASTER (EAST) (2012)	2,533.018 772.066	CS MON IN WELL 26" DN @ C/L INT AVE M & 95TH ST E MKD (1/4 COR 32,5,T6N,T7N,R10W)	L 2036
LANCASTER (EAST) (2012)	2,535.884 772.940	CEBM MON 3" UP 38' S & 89' E/O C/L INT AVE M & 95TH ST E MKD (BM 122-1 1961) MKR POST 2' N/O MON	L 2037
LANCASTER (EAST) (2012)	2,542.187 774.861	CS MON IN WELL 8" DN @ C/L INT AVE M & 100TH ST E MKD (CO SURV 32,33,5,4,T6N,T7N,R10W,1925)	L 2038
BASELINE (2010)	2,578.629 785.968	CSBM MON 1' DN @ NE COR AVE M & 150TH ST E 53' N & 33' E/O C/L INT MKD (BM 115-11 1961) MKR POST 2' W/O MON	L 2049
BASELINE (2010)	2,578.694 785.988	CS MON IN WELL @ C/L INT AVE M & FUT 155TH ST E MKD (1/4 SEC COR 32,5,T6N,T7N,R9W)	L 2050

QUAD YEAR	ELEV FOOT/METER	DESCRIPTION	BM NUMBER
BASELINE (2010)	2,582.313 787.091	2" IP W/NAIL 8" UP @ NE COR AVE M & FUT 155TH ST E 50' N & 50' E/O C/L INT (USE E EDGE)	L 2051
BASELINE (2010)	2,579.734 786.305	2" IP W/NAIL 8" UP @ SW COR AVE M & FUT 160TH ST E 50' S & 43' W/O C/L INT (USE W EDGE), 2' S/O MKR POST	L 2052
BASELINE (2010)	2,580.816 786.635	2" IP W/NAIL 8" UP @ NE COR AVE M & FUT 160TH ST E 50' N & 50' E/O C/L INT (USE E EDGE)	L 2054
BASELINE (2010)	2,581.070 786.713	2" IP W/NAIL FLUSH @ SW COR AVE M & FUT 165TH ST E 50' S & 50' W/O C/L INT	L 2055
LANCASTER (EAST) (2012)	2,534.159 772.414	CSBM MON 14" DN 17' S & 33' E/O C/L INT 150TH ST E & AVE K-8 MKD (BM 115-14 1961) MKR POST 10" E/O MON	L 2110
LANCASTER (EAST) (2012)	2,491.942 759.546	CS MON IN WELL 10" DN @ C/L INT AVE J & FUT 145TH ST E MKD (1/4 COR 18,19,R9W,T7N)	L 2161
LANCASTER (EAST) (2012)	2,454.651 748.180	2" IP 12" UP @ C/L PROD AVE G-8 & 50' E/O C/L 140TH ST E	L 2162
LANCASTER (EAST) (2012)	2,458.244 749.275	2" IP 12" UP 50' W/O 140TH ST E ON C/L FUT F-8 MKR POST 10" NE/O MON	L 2163
LANCASTER (EAST) (2012)	2,464.571 751.204	2" IP W/CONC PLUG & NAIL 12" UP 50' N & 50' E/O C/L INT 140TH ST E & AVE E-8 MKR POST 10" NW/O MON	L 2164
BASELINE (2010)	2,348.410 715.798	CSBM MON FL @ SW COR 90TH ST E & AVE E-8 56' S & 27' W/O C/L INT MKD (116-7 1961) MKR POST 10" E/O MON	L 2166
BASELINE (2010)	2,383.908 726.617	CS MON IN WELL 10" DN @ C/L INT 90TH ST E & AVE G-8 MKD (1/4 SEC 5,6,R10W,T7N,RE 5869)	L 2167
BASELINE (2010)	2,402.120 732.168	CS MON IN WELL 9" DN @ C/L INT 90TH ST E & AVE H-8 MKD (1/4 COR 7,8,T7N,R10W,RE5869)	L 2168
LANCASTER (EAST) (2012)	2,448.220 746.220	2" IP W/CS TAG 3" UP @ NW COR AVE J & 95TH ST E 40' N & 40' W/O C/L INT MKR 10" S/O MON	L 2169
BASELINE (2010)	2,491.385 759.376	CS MON IN WELL 8" DN @ C/L INT 90TH ST E & AVE K-8 MKD (1/4 SEC COR 29,30,R10W,T7N)	L 2189
BASELINE (2010)	2,514.786 766.509	CS MON IN WELL 10" DN @ C/L INT 90TH ST E & FUT AVE L-8 MKD (CO SURV 1/4 31,32,R10W,T7N)	L 2190
LANCASTER (EAST) (2012)	2,435.719 742.409	2" IP W/BOLT IN WELL 42" DN @ C/L INT AVE H & 135TH ST E	L 2337
LANCASTER (EAST) (2012)	2,436.850 742.754	2" IP CONC PLUG & 32 CALIBER CART 4" UP, CL 135TH ST E & 40' N/O AVE H	L 2338
LANCASTER (EAST) (2012)	2,433.408 741.705	L&T IN W SIDE OF CONC STANDPIPE @ NE COR AVE H & 130TH ST E 62' N & 82' E/O C/L INT	L 2339
LANCASTER (EAST) (2012)	2,429.350 740.468	CS MON IN WELL 10" DN @ C/L INT AVE H & 130TH ST E MKD (SEC COR 1,2,12,11,R10W,T7N)	L 2340

QUAD YEAR	ELEV FOOT/METER	DESCRIPTION	BM NUMBER
LANCASTER (EAST) (2012)	2,431.527 741.132	2" IP W/CONC PLUG & CS TAG @ SE COR AVE H & 125TH ST E 40' E & 40' S/O C/L INT MKR POST 10" N/O MON @ WLY P/L HSE #12501	L 2341
LANCASTER (EAST) (2012)	2,428.053 740.073	CS MON IN WELL 6" DN @ C/L INT AVE H & 125TH ST E MKD (1/4 COR 2,11,R10W,T7N,RE 5869)	L 2342
LANCASTER (EAST) (2012)	2,420.517 737.776	2" IP W/CONC PLUG & NAIL 3" UP @ SE COR AVE H & 120TH ST E 50' S & 50' E/O C/L INT MKR POST 10" N/O MON	L 2343
LANCASTER (EAST) (2012)	2,419.259 737.392	CS MON IN WELL 18" DN @ C/L INT AVE H & 120TH ST E MKD (CO SURV 3,2,10,11,R10W,T7N)	L 2344
LANCASTER (EAST) (2012)	2,413.355 735.593	CS MON IN WELL 6" DN @ C/L INT AVE H & 110TH ST E MKD (CO SURV 4,3,9,10,R10W,T7N)	L 2347
LANCASTER (EAST) (2012)	2,414.661 735.991	2" IP W/CONC PLUG & NAIL 12" UP @ NW COR AVE H & 110TH ST E 40' N & 40' W/O C/L INT MKR POST 10" S/O MON	L 2348
LANCASTER (EAST) (2012)	2,399.061 731.236	CS MON IN WELL 10" DN @ C/L INT AVE H & 100TH ST E MKD (5,4,8,9,R10W,T7N)	L 2350
LANCASTER (EAST) (2012)	2,396.664 730.505	CS MON IN WELL 8" DN @ C/L INT AVE H & FUT 95TH ST E MKD (1/4 COR 5,8,T7N,R10W)	L 2351
LANCASTER (EAST) (2012)	2,524.231 769.388	CSBM MON IN NW COR OF CONC WATER VALVE VAULT 50' E & 30' S/O C/L INT AVE G & 145TH ST E MKD (BM 124-1 1966)	L 2380
LANCASTER (EAST) (2012)	2,675.520 815.501	CSBM MON FL 31' N 60' E/O C/L INT AVE G & 155TH ST E MKD (BM 124-3 1966) MKR 10" N/O MON	L 2384
LANCASTER (EAST) (2012)	2,750.278 838.287	RDBM TAG IN CONC F HYD BASE 32' S & 81' E/O C/L INT AVE G & 160TH ST E	L 2386
LANCASTER (EAST) (2012)	2,858.824 871.372	CSBM MON FLUSH @ NE COR AVE G & 165TH ST E 134' E & 30' N/O C/L INT MKD (BM 124-5 1966) MKR POST 2' S/O MON	L 2388
LANCASTER (EAST) (2012)	2,976.696 907.300	CS MON IN WELL 6" DN @ C/L INT AVE G & 175TH ST E MKD (1/4 COR 34,3,R9W,T8N,T7N)	L 2391
LANCASTER (EAST) (2012)	2,977.962 907.686	RDBM TAG IN NW COR CONC BASE OF F HYD @ SE COR AVE G & 175TH ST E 60' E & 32' S/O C/L INT	L 2392
LANCASTER (EAST) (2012)	3,051.102 929.979	CS MON IN WELL 14" DN @ C/L INT AVE G & 180TH ST E MKD (SEC COR 34,35,3,2,R9W,T8N,T7N)	L 2393
LANCASTER (EAST) (2012)	3,093.314 942.845	RDBM TAG IN NW COR CONC BASE OF F HYD @ SE COR AVE G & 185TH ST E 58' E & 32' S/O C/L INT	L 2396
LANCASTER (EAST) (2012)	3,129.920 954.002	CS MON IN WELL 18" DN @ C/L INT AVE G & 190TH ST E MKD (35,36,2,1,T8N,T7N,R9W)	L 2397
LANCASTER (EAST) (2012)	3,075.370 937.376	CS MON IN WELL 18" DN @ C/L INT AVE G & 195TH ST E MKD (1/4 COR 36,1,T7N,T8N,R9W)	L 2399
LANCASTER (EAST) (2012)	3,077.248 937.948	2" IP W/CONC PLUG & CS TAG 8" UP @ SW COR AVE G & 195TH ST E 50' S & 50' W/O C/L INT MKR 2' N/O MON	L 2400
LANCASTER (EAST) (2012)	3,047.032 928.738	CS MON IN WELL 18" DN @ C/L INT AVE G & 200TH ST E MKD (SEC COR 36,31,1,6,T7N,T8N,R8W,R9W,1927)	L 2401

QUAD YEAR	ELEV FOOT/METER	DESCRIPTION	BM NUMBER
LANCASTER (EAST) (2012)	3,033.842 924.718	CS MON IN WELL 8" DN @ C/L INT 200TH ST E & AVE G-8 MKD (1/4 COR 1,6,T7N,R8W,R9W)	L 2403
LANCASTER (EAST) (2012)	3,031.511 924.007	1.5" IP W/CONC PLUG & BRAD 3" UP @ SW COR 200TH ST E & G-8 50' S & 50' W/O C/L INT	L 2404
LANCASTER (EAST) (2012)	2,998.079 913.817	CS MON IN WELL 8" DN @ C/L INT 200TH ST E & AVE H MKD (SEC COR 1,6,12,7,R8W,R9W,T7N,RE 5869)	L 2405
LANCASTER (EAST) (2012)	2,999.854 914.358	1.5" IP W/CONC PLUG & NAIL @ SW COR 200TH ST E & AVE H 50' S & 50' W/O C/L INT	L 2406
LANCASTER (EAST) (2012)	2,974.162 906.527	CS MON IN WELL 10"M DN @ C/L INT 200TH ST E & AVE H-8 MKD (1/4 COR 12,7,T7N,R9W,R8W)	L 2407
LANCASTER (EAST) (2012)	2,985.083 909.856	CS MON IN WELL 18" DN @ C/L INT 200TH ST E & AVE I MKD (SEC COR 12,7,13,18,T7N,R8W,R9W,1927)	L 2409
LANCASTER (EAST) (2012)	2,987.922 910.721	CS MON 6" UP @ SW COR 200TH ST E & AVE I 40' W & 40' S/O C/L INT MKD (RPC 1 RE 5869) MKR POST 8' SW/O MON	L 2410
LANCASTER (EAST) (2012)	2,967.590 904.524	CS MON 8" DN @ C/L INT AVE J & 190TH ST E MKD (SEC COR 14,13,23,24,R9W,T7N)	L 2419
LANCASTER (EAST) (2012)	2,967.899 904.618	2" IP W/CONC PLUG & CS TAG 12" UP @ NW COR AVE J & 190TH ST E 50' W & 50' N/O C/L INT	L 2420
LANCASTER (EAST) (2012)	2,890.184 880.931	2" IP W/CONC PLUG & NAIL 3" DN @ NE COR 185TH ST E & AVE J 40' N & 50' E/O C/L INT	L 2421
LANCASTER (EAST) (2012)	2,886.825 879.907	2" IP W/CONC PLUG & NAIL 12" UP @ SW COR 185TH ST E & AVE J 40' S & 40' W/O C/L INT MKR POST 10" S/O MON	L 2423
LANCASTER (EAST) (2012)	2,764.753 842.699	CS MON IN WELL 10" DN @ C/L INT 180TH ST E & AVE J MKD (SEC COR 15,14,22,23,R9W,T7N)	L 2424
LANCASTER (EAST) (2012)	2,760.774 841.486	2" IP W/CONC PLUG & NAIL FLUSH @ SW COR AVE J & 180TH ST E 40' S & 40' W/O C/L INT	L 2425
LANCASTER (EAST) (2012)	2,744.461 836.514	2" IP W/CONC PLUG & NAIL 10" UP @ SE COR 175TH ST E & AVE J 40' E & 40' S/O C/L INT	L 2426
LANCASTER (EAST) (2012)	2,742.354 835.872	CS MON IN WELL 12" DN @ C/L INT 175TH ST E & AVE J MKD (1/4 COR 15,22,T7N,R9W)	L 2427
LANCASTER (EAST) (2012)	2,580.848 786.645	CS MON IN WELL 8" DN @ C/L INT 165TH ST E & AVE J MKD (1/4 COR 16,21,R9W,T7N)	L 2431
BASELINE (2010)	2,555.755 778.996	CS MON IN WELL 2' DN @ C/L INT 90TH ST E & AVE N MKD (5,6,7,8,T6N,R10W)	L 2608
BASELINE (2010)	2,591.291 789.828	CSBM MON FL @ NE COR 150TH ST E & FUT AVE M-8 76' N & 34' E/O C/L INT MKD (BM 115-10 1961) MKR POST 2' E/O MON	L 2700
BASELINE (2010)	2,607.656 794.816	CSBM MON 6" UP @ NE COR AVE N & 150TH ST E 66' N & 30' E/O C/L INT MKD (BM 115-9 1961) MKR POST 2' E/O MON	L 2701

QUAD YEAR	ELEV FOOT/METER	DESCRIPTION	BM NUMBER
BASELINE (2010)	2,619.472 798.417	CSBM MON 6" UP @ NW COR 150TH ST E & FUT AVE N-8 190' N & 33' W/O C/L INT MKD (BM 115-8 1961) MKR POST 2' W/O MON	L 2702
BASELINE (2010)	2,651.134 808.068	CSBM MON 6" UP @ SW COR AVE O & 145TH ST E 100' S & 37' W/O C/L INT MKD (BM 115-6 1961) MKR POST 2' W/O MON	L 2704
LANCASTER (EAST) (2012)	2,948.589 898.733	CS MON 6" UP ON C/L LANCASTER BLVD 98' W/O C/L 200TH ST E MKD (BM RPA-1 RE 5869) MKR POST 2' NW/O MON	L 3171
LANCASTER (EAST) (2012)	2,923.659 891.134	CSBM MON 30' N C/L AVE J & 164' E/O C/L 200TH ST E MKD (BM 124-18 1966) MKR POST 10" N/O MON (BENT OVER)	L 3172
LANCASTER (EAST) (2012)	2,925.998 891.847	1.5" IP W/ BRAD UP 4", 50' S & 50' W/O CL INT 200TH ST E & AVE J, 2' W/O MKR POST	L 3173
LANCASTER (EAST) (2012)	2,923.447 891.069	1.5" IP 2" UP @ NW COR AVE J & 195TH ST E 50' W & 48' N/O C/L INT	L 3175
BASELINE (2010)	2,681.348 817.277	CS MON 4" DN @ C/L INT AVE M & 200TH ST E MKD (SEC COR 36,31,1,6,T7N,R9W,R8W)	L 3186
BASELINE (2010)	2,682.397 817.597	2" IP W/CE TAG @ SW COR AVE M & 200TH ST E 46' S & 52' W/O C/L INT (S EDGE)	L 3187
BASELINE (2010)	2,668.790 813.450	1.5" IP W/NAIL 4" DN @ C/L INT AVE M & FUT 195TH ST E	L 3188
BASELINE (2010)	2,668.966 813.503	CHIS X ON N EDGE 1.5" IP W/CE TAG 6" UP ON C/L PROD FUT 195TH ST E & 50' S/O C/L AVE M	L 3189
BASELINE (2010)	2,653.483 808.784	CS MON 6" DN @ C/L INT FUT AVE M & 190TH ST E MKD (SEC COR 35,36,2,1,T6N,T7N,R9W)	L 3190
BASELINE (2010)	2,654.372 809.055	CHIS X ON W EDGE 2" IP W/CE TAG 6" UP @ NW COR FUT AVE M & 190TH ST E 50' N & 50' W/O C/L INT	L 3191
BASELINE (2010)	2,628.303 801.109	2" IP W/NAIL 6" DN @ C/L INT FUT AVE M & FUT 185TH ST E	L 3192
BASELINE (2010)	2,631.857 802.192	CHIS X ON S EDGE 2" IP W/CE TAG 4" UP ON C/L PROD FUT 185TH ST E & 50' S/O C/L FUT AVE M	L 3193
BASELINE (2010)	2,596.917 791.543	2" IP W/CE TAG 6" UP ON C/L FUT 175TH ST E & 50' S/O C/L AVE M	L 3195
LANCASTER (EAST) (2012)	2,548.977 776.931	RDBM MON IN WELL @ NE COR AVE M & 105TH ST E 20' N & 68' E/O C/L INT 9' E/O PP #390101E MKD (1968) MKR POST 2' N/O MON	L 3338
BASELINE (2010)	2,588.720 789.044	2" IP W/CS TAG @ SE COR AVE M & 170TH ST E 50' S & 50' E/O C/L INT MKR POST 2' W/O MON	L 3342
LANCASTER (EAST) (2012)	2,457.472 749.040	CSBM MON 3" UP @ SW COR 140TH ST E & FUT AVE F-8 110' S & 50' W/O C/L INT MKD (BM 106-109A RE 5869)	L 3343
LANCASTER (EAST) (2012)	2,975.263 906.863	1.5" IP W/NAIL FLUSH @ SE COR 200TH ST E & AVE H-8 50' S & 50' E/O C/L INT	L 3344
LANCASTER (EAST) (2012)	2,419.546 737.480	L&BN IN SE COR CONC APRON @ E EDGE CONC SLAB 175' N & 102' W/O C/L INT 110TH ST E & AVE H-8	L 3347

QUAD YEAR	ELEV FOOT/METER	DESCRIPTION	BM NUMBER
LANCASTER (EAST) (2012)	2,434.447 742.022	CS MON IN WELL 8" DN @ C/L INT 110TH ST E & AVE I MKD(1/4 COR 9,10,15,16,R10W,T7N,1926)	L 3350
LANCASTER (EAST) (2012)	2,443.986 744.929	1.5" IP W/BRAD 2' DN 50' N & 50' W/O C/L INT 110TH ST E & AVE 1-8 MKR POST 10" N/O MON	L 3351
LANCASTER (EAST) (2012)	2,442.040 744.336	CS MON IN WELL 10" DN @ C/L INT 110TH ST E & AVE I-8 MKD (1/4 COR 15,16,T7N,R10W,1926)	L 3352
LANCASTER (EAST) (2012)	2,470.670 753.062	RDBM MON IN WELL @ 40' S/O C/L FUT AVE J-8 & 20' E/O C/L 110TH ST E 22' S/O PP (#192429E) MKD (1968) MKR POST 2' E/O MON	L 3353
LANCASTER (EAST) (2012)	2,580.661 786.588	RDBM MON IN WELL 16' W/O PP #BF 90467-15 66' N/O C/L AVE L & 32' W/O C/L 170TH ST E MKR POST 2' N/O MON	L 3359
LANCASTER (EAST) (2012)	2,591.549 789.907	RDBM MON IN WELL @ NW COR 170TH ST E & AVE K 34' W & 47' N/O C/L INT 10' SW/O PP #1061693E MKR POST 2' W/O MON	L 3361
LANCASTER (EAST) (2012)	2,627.097 800.742	CS MON IN WELL 200MM DN @ C/L INT 170TH ST E & FUT AVE J-8 MKD (1/4 COR 21,22,T7N,R9W)	L 3362
LANCASTER (EAST) (2012)	2,628.087 801.043	1.5" IP FLUSH @ NE COR 170TH ST E & FUT AVE J-8 50' N & 50' E/O C/L INT	L 3363
BASELINE (2010)	2,701.982 823.567	1.5" IP W/NAIL 6" DN @ C/L INT FUT AVE M & 205TH ST E	L 3393
BASELINE (2010)	2,703.192 823.935	2" IP W/CE TAG 6" UP ON C/L 205TH ST E & 50' S/O C/L FUT AVE M	L 3394
BASELINE (2010)	2,721.595 829.545	2" IP W/CE TAG 8" UP @ SW COR FUT AVE M & 210TH ST E 50' S & 50' W/O C/L INT	L 3395
BASELINE (2010)	2,720.223 829.126	CS MON 1' DN @ C/L INT FUT AVE M & 210TH ST E MKD (SEC COR 31,32,6,5,T6N,R8W)	L 3396
BASELINE (2010)	2,735.173 833.683	2" IP W/CE TAG 8" UP @ SW COR FUT AVE M & 215TH ST E 50' S & 50' W/O C/L INT	L 3397
BASELINE (2010)	2,734.681 833.533	1.5" IP W/NAIL 1' DN @ C/L INT FUT AVE M & 215TH ST E	L 3398
BASELINE (2010)	2,757.908 840.613	2" IP W/CE TAG 6" UP @ NE COR FUT AVE M & 220TH ST E 50' N & 50' E/O C/L INT	L 3400
BASELINE (2010)	2,795.648 852.116	2" IP W/CE TAG 8" UP @ SW COR FUT AVE M & 230TH ST E 50' S & 50' W/O C/L INT MKR POST 1' W/O MON	L 3403
BASELINE (2010)	2,794.755 851.844	CS MON 6" DN @ C/L INT FUT AVE M & 230TH ST E MKD (SEC COR 33,34,3,4,T6N,R8W) MKR POST 1' S/O MON	L 3404
BASELINE (2010)	2,832.027 863.204	2" IP W/CE TAG 10" UP @ SW COR FUT AVE M & 235TH ST E 50' S & 50' W/O C/L INT MKR POST 1' S/O MON	L 3405
BASELINE (2010)	2,849.696 868.590	2" IP W/LACS TAG 6" UP @ SW COR 240TH ST E & FUT AVE M 50' S & 50' E/O C/L INT MKR POST 1' E/O MON	L 3407

QUAD YEAR	ELEV FOOT/METER	DESCRIPTION	BM NUMBER
BASELINE (2010)	2,848.585 868.251	CS MON IN WELL 1' DN @ C/L INT FUT AVE M & 240TH ST E MKD (SEC COR 2,3,34,35,T6N,R8W)	L 3408
LANCASTER (EAST) (2012)	3,027.100 922.663	CS MON IN WELL 7" DN @ C/L INT AVE G & 205TH E MKD (1/4 COR 31,6,T7N,T8N,R8W)	L 3409
LANCASTER (EAST) (2012)	3,027.613 922.819	2" IP 3" UP @ NE COR AVE G & 205TH ST E 50' N & 50' E/O C/L INT	L 3410
LANCASTER (EAST) (2012)	3,019.992 920.496	CSBM MON 3" UP @ NW COR AVE G & 210TH ST E 42' N & 140' W/O C/L INT MKD (BM 124-30 1966)	L 3411
LANCASTER (EAST) (2012)	3,019.054 920.210	CS MON IN WELL 10" DN @ C/L INT AVE G & 210TH ST E MKD (SEC COR 31,32,5,6,T7N,T8N,R8W)	L 3412
LANCASTER (EAST) (2012)	2,973.989 906.475	CSBM MON 8" UP @ NW COR AVE G & 215TH ST E 56' N & 25' W/O C/L INT MKD (BM 124-31 1966) MKR POST 2' S/O MON	L 3413
LANCASTER (EAST) (2012)	2,974.533 906.640	CS MON IN WELL 8" DN @ C/L INT AVE G & 215TH ST E MKD (1/4 COR 32,5,T7N,T8N,R8W)	L 3414
LANCASTER (EAST) (2012)	2,988.953 911.036	CSBM MON FLUSH @ NW COR AVE G & 220TH ST E 35' N & 137' W/O C/L INT MKD (BM 124-32 1966) MKR POST 3' S/O MON (BENT OVER)	L 3415
LANCASTER (EAST) (2012)	3,039.284 926.377	2" IP W/CE TAG 10" UP @ SW COR AVE G 235TH ST E 50' S & 50' W/O C/L INT	L 3419
LANCASTER (EAST) (2012)	3,067.739 935.050	2" IP 3" UP @ SW COR 240TH ST E & AVE G 50' S & 50' W/O C/L INT	L 3421
LANCASTER (EAST) (2012)	3,067.386 934.942	CS MON IN WELL 8" DN @ C/L INT AVE G & 240TH ST E MKD (SEC COR 34,35,3,2,T7N,T8N,R8W)	L 3422
LANCASTER (EAST) (2012)	3,054.765 931.095	2" IP W/CE TAG FLUSH 50' N/O C/L AVE G & 575' W/O DRWY TO HSE 24002 MKR POST 10" N/O MON	L 3423
LANCASTER (EAST) (2012)	3,053.527 930.718	CSBM MON IN BOULDER 87' S C/L AVE G & 375' W/O C/L DRWY TO HSE 24002 MKD (BM 124-37 1966) 0.50MI W/O 250TH ST E	L 3424
LANCASTER (EAST) (2012)	2,953.659 900.278	CS MON IN WELL 8" DN @ C/L INT AVE G & 250TH ST E MKD (SEC COR 35,36,1,2,T7N,T8N,R8W)	L 3426
LANCASTER (EAST) (2012)	2,966.597 904.221	2" IP W/CE TAG 8" UP @ NW COR 250TH ST E & FUT AVE G-8 50' N & 50' W/O C/L INT MKR POST 42" N/O MON	L 3427
LANCASTER (EAST) (2012)	2,964.347 903.536	CS MON IN WELL 12" DN @ C/L INT 250TH ST E & FUT AVE G-8 MKD (1/4 COR 1,2,T7N,R8W)	L 3428
LANCASTER (EAST) (2012)	2,970.503 905.412	2" IP W/CE TAG FLUSH @ NW COR 250TH ST E & FUT AVE H 50' N & 50' W/O C/L INT MKR POST 10" N/O MON	L 3429
LANCASTER (EAST) (2012)	2,968.291 904.738	CS MON 10" DN @ C/L INT 250TH ST E & AVE H MKD (12,11,1,2,T7N,R8W) MON 4.2M E/O FENCE COR POST	L 3430
LANCASTER (EAST) (2012)	3,048.564 929.205	CSBM MON IN ROCK OUTCROP NR TOP HILL 130' W/O C/L 250TH ST E & 0.90MI S/O AVE H MKD (BM 124-42 1966) MKR POST 6' NE/O MON	L 3433
LANCASTER (EAST) (2012)	3,029.938 923.528	CS MON 10" DN @ C/L INT FUT 250TH ST E & FUT AVE I MKD (SEC COR 11,12,13,14,T7N,R8W) MKR POST 2' N/O MON 106' NE/O F HYD	L 3434

QUAD YEAR	ELEV FOOT/METER	DESCRIPTION	BM NUMBER
LANCASTER (EAST) (2012)	3,044.400 927.936	CSBM MON IN ROCK FACE 124' W/O C/L 250TH ST E (DIRT) & 320' N/O KILDARE ST (AVE I-4) MKD (BM 124-44 1966)	L 3436
LANCASTER (EAST) (2012)	3,040.591 926.775	1.5" IP W/CE TAG FLUSH @ NE COR 250TH ST E & KILDARE ST (AVE I-4) 50' N & 50' E/O C/L INT MKR POST 10" W/O MON	L 3437
LANCASTER (EAST) (2012)	3,027.511 922.788	CS MON 2' DN @ C/L INT 250TH ST E & FUT AVE I-8, 9' W C/L INT DIRT RDS MKD (1/4 COR 13,14, T7N,R8W) MKR POST 2' NW/O MON	L 3438
LANCASTER (EAST) (2012)	2,983.846 909.479	2" IP WITH CE TAG 8" UP @ NE COR AVE J & 250TH ST E 50' N & 50' E/O C/L INT	L 3439
LANCASTER (EAST) (2012)	2,983.107 909.254	CSBM MON @ NW COR AVE J & 250TH ST E 35' N & 24' W/O C/L INT MKD (BM 124-46 1966) 2" ST POST (MKD 250) 18" N/O MON	L 3440
LANCASTER (EAST) (2012)	2,942.852 896.984	2" IP 12" UP @ NW COR 245TH ST & AVE J 50' N & 50' W/O C/L INT	L 3441
LANCASTER (EAST) (2012)	2,941.713 896.637	CSBM MON 3" DN @ SW COR AVE J & 245TH ST E 34' S & 78' W/O C/L INT MKD (BM 124-47 1966) MKR POST 2' S/O MON	L 3442
LANCASTER (EAST) (2012)	3,077.526 938.033	RDBM TAG IN CONC COLLAR OF FIRE HYD @ SW COR 200TH ST E & AVE F-8 50' S & 20' W/O C/L INT	L 3450
LANCASTER (EAST) (2012)	3,047.618 928.917	2" IP W/CE TAG 8" UP @ SW COR AVE F & 200TH ST E 50' S & 50' W/O C/L INT	L 3452
LANCASTER (EAST) (2012)	3,075.548 937.430	BN IN SW COR OF 3" POST 2" UP @ SW COR 200TH ST E & AVE E-8 30' S & 30' W/O C/L INT 3' W/O STREET SIGN	L 3455
LANCASTER (EAST) (2012)	3,094.417 943.181	CS MON 8" DN @ C/L INT 200TH ST E & AVE E MKD (24,19,25,30,T8N,R9W,RE 22726,1982)	L 3456
LANCASTER (EAST) (2012)	3,062.158 933.349	CS MON IN WELL 8" DN @ C/L INT 230TH ST E & AVE F MKD (SEC COR 28,27,33,34,R8W,T8N) MKR POST 3' NW/O MON	L 3487
LANCASTER (EAST) (2012)	3,062.843 933.557	2" IP W/CE TAG 8" UP @ SW COR 230TH ST E & AVE F 50' S & 50' W/O C/L INT	L 3488
LANCASTER (EAST) (2012)	3,040.821 926.845	2" IP W/CE TAG 3" UP @ NW COR 230TH ST E & AVE F-8 50' N & 50' W/O C/L INT	L 3489
LANCASTER (EAST) (2012)	3,072.112 936.383	CS MON 8" DN @ C/L INT FUT AVE E & 205TH ST E 20' N/O C/L DIRT RD NR C/L PROD 205TH ST E MKD (COR 1/4 19,30,T8N,R8W,1931)	L 3491
LANCASTER (EAST) (2012)	3,059.166 932.437	CS MON 8" DN @ C/L INT FUT AVE E & 210TH ST E 20' N & 36' E/O C/L INT DIRT RDS MKD (SEC COR 19,20,30,29,T8N,R8W,1931)	L 3493
LANCASTER (EAST) (2012)	3,059.713 932.603	BN IN NW COR 3" WOOD POST 6" UP ON C/L 215TH ST E & 20' N/O C/L AVE E	L 3496
LANCASTER (EAST) (2012)	3,036.535 925.539	CS MON 2' DN @ C/L INT AVE E & 220TH ST E 26' S & 21' W/O C/L INT DIRT RDS MKD (SEC COR 20,21,28,29,T8N,R8W) MKR POST 2' SW/O MON	L 3498
LANCASTER (EAST) (2012)	2,915.339 888.598	2" IP W/CE TAG 8" UP @ NW COR AVE J & 205TH ST E 50' N & 50' W/O C/L INT	L 3501

QUAD YEAR	ELEV FOOT/METER	DESCRIPTION	BM NUMBER
LANCASTER (EAST) (2012)	2,915.355 888.603	2" IP W/CE TAG 8" UP @ SE COR AVE J & 205TH ST E 50' S & 50' E/O C/L INT	L 3502
LANCASTER (EAST) (2012)	2,882.257 878.515	2" IP W/CE TAG FLUSH @ NE COR AVE J & 210TH ST E 50' N & 50' E/O C/L INT	L 3504
LANCASTER (EAST) (2012)	2,851.856 869.248	2" IP W/CE TAG 3" UP @ NW COR AVE J & 215TH ST E 50' N & 50' W/O C/L INT	L 3505
LANCASTER (EAST) (2012)	2,851.348 869.093	2" IP W/NAIL 75MM UP @ NE COR AVE J & 215TH ST E 50' N & 50' E/O C/L INT	L 3506
LANCASTER (EAST) (2012)	2,855.834 870.461	2" IP 2" UP @ NW COR AVE J & 220TH ST E 50' N & 50' W/O C/L INT	L 3507
LANCASTER (EAST) (2012)	2,856.201 870.573	2" IP W/NAIL FLUSH @ SE COR AVE J & 220TH ST E 50' S & 50' E/O C/L INT	L 3508
LANCASTER (EAST) (2012)	2,896.190 882.761	2" W/CE TAG 3" UP @ NW COR AVE J & 225TH ST E 50' N & 50' W/O C/L INT	L 3509
LANCASTER (EAST) (2012)	2,898.843 883.570	2" IP W/CE TAG FLUSH @ SE COR AVE J & 225TH ST E 50' S & 50' E/O C/L INT	L 3510
LANCASTER (EAST) (2012)	2,943.158 897.077	2" IP W/CE TAG 2" UP @ SW COR AVE J & 230TH ST E 50' S & 50' W/O C/L INT	L 3511
LANCASTER (EAST) (2012)	2,940.950 896.404	2" IP W/CE TAG 10" UP @ NE COR AVE J & 230TH ST E 50' N & 50' E/O C/L INT	L 3512
LANCASTER (EAST) (2012)	2,947.804 898.493	2" IP W/CE TAG 2" UP @ SW COR AVE J & 235TH ST E 50' S & 50' W/O C/L INT	L 3513
LANCASTER (EAST) (2012)	2,950.392 899.282	2" IP W/CE TAG 2" UP @ NE COR AVE J & 235TH ST E 50' N & 50' E/O C/L INT	L 3514
LANCASTER (EAST) (2012)	2,366.536 721.322	CSBM MON 3" UP ON C/L 125TH ST E & 50' N/O C/L AVE E MKD (106-115A 1972 RE 7078) MKR POST 2' S/O MON	L 3633
LANCASTER (EAST) (2012)	2,401.739 732.052	L&BN IN CB 30' N & 82' E/O C/L INT 120TH ST E & AVE G MKD (BM)	L 3634
LANCASTER (EAST) (2012)	2,374.166 723.648	1.5" IP W/BRAD 8" DN 60' N & 60' E/O C/L INT AVE E & 135TH ST E FENCE COR 13' SW/O IP	L 3665
LANCASTER (EAST) (2012)	2,359.502 719.178	L&BN IN SW COR CONC SLAB 145' N & 116' E/O C/L INT AVE E & 120TH ST E MKD (BM)	L 3667
LANCASTER (EAST) (2012)	2,344.794 714.695	CS MON IN WELL 10" DN @ C/L INT AVE E & 95TH ST E MKD (1/4 COR 20,29,R10W,T8N,RE 5869)	L 3671
LANCASTER (EAST) (2012)	3,026.112 922.362	2" IP W/CONC PLUG & NAIL 8" UP 50' S & 50' W/O C/L INT AVE G & 230TH ST E	L 3672
LANCASTER (EAST) (2012)	3,012.659 918.261	2" IP W/CE TAG 12" UP 50' N & 50' W/O C/L INT AVE G & 225TH ST E	L 3674
LANCASTER (EAST) (2012)	2,404.927 733.024	L&BN IN SW COR CONC SLAB OF WATER VALVE 225' E/O C/L 105TH ST E & 161' N/O C/L AVE H MKD (BM)	L 3676

QUAD YEAR	ELEV FOOT/METER	DESCRIPTION	BM NUMBER
LANCASTER (EAST) (2012)	2,469.864 752.817	1.5" IP W/CONC PLUG & BRAD 2" DN 50' S & 50' E/O C/L INT AVE J & 130TH ST E MKR 10" S/O MON	L 3680
LANCASTER (EAST) (2012)	2,449.464 746.599	2" IP W/CS TAG 3" UP 40' S & 40' E/O C/L INT AVE J & 95TH ST E MKR POST 10" S/O MON	L 3681
LANCASTER (EAST) (2012)	2,428.409 740.181	RDBM MON IN WELL 40' N & 40' E/O C/L INT AVE E & 140TH ST E MKD (1972) FENCE COR 17' NE/O MON	L 3688
LANCASTER (EAST) (2012)	2,462.995 750.723	2" IP W/CONC PLUG & 40 CAL SHELL CASE 50' N & 50' W/O C/L INT AVE I & 140TH ST E MKR POST 10" N/O MON	L 3691
LANCASTER (EAST) (2012)	2,951.565 899.640	L&BN IN NE COR CONC BASE OF F HYD 36' S & 75' E/O C/L INT 200TH ST E & LANCASTER BLVD	L 3702
LANCASTER (EAST) (2012)	2,890.934 881.159	2" IP W/CE TAG 6" UP 50' S & 50' W/O C/L INT 240TH ST E & FUT AVE K MKR 10" W/O MON	L 3707
LANCASTER (EAST) (2012)	2,928.109 892.490	RDBM MON IN WELL 8" DN 43' S & 50' E/O C/L INT 240TH ST E & AVE J MKR POST 2' S/O MON	L 3708
BASELINE (2010)	2,772.542 845.073	2" IP W/CONC PLUG & 45 CARTRIDGE 8" UP 50' S & 50' E/O C/L INT AVE O & FUT 135TH ST E 36' NE/O PP #1786912E	L 4167
BASELINE (2010)	2,745.638 836.873	2" IP W/CONC PLUG & CE TAG 4" DN 50' S & 50' E/O C/L INT AVE O & FUT 125TH ST E	L 4170
BASELINE (2010)	2,674.887 815.308	2" IP W/CONC PLUG FLUSH 50' N & 50' E/O C/L INT AVE O & FUT 120TH ST E MKR 1' N/O MON	L 4172
BASELINE (2010)	2,598.002 791.873	1.5" IP W/CONC PLUG & BRAD FL 50'M N & 50' E/O C/L INT AVE O & 105TH ST E CHIS X ON W EDGE MKR POST 1' N/O MON	L 4176
BASELINE (2010)	2,599.527 792.338	1.5" IP W/CONC PLUG & BRAD FL 50' S & 50'M W/O C/L INT AVE O & 105TH ST E 43' E/O PP #2287760E	L 4177
BASELINE (2010)	2,590.554 789.603	2" IP W/CONC PLUG & BRAD 40' N & 40' W/O C/L INT AVE O & 100TH ST E 20' W/O PP #2145389E	L 4179
BASELINE (2010)	2,527.157 770.280	RDBM MON IN WELL 330' N & 36' E/O C/L INT 90TH ST E & AVE M MKD (1974) MKR POST 2' E/O MON	L 4479
LANCASTER (EAST) (2012)	2,583.859 787.563	L&BM TAG IN CONC SLAB OF FIRE HYD 75' E & 45' S/O C/L INT AVE J & 165TH ST E	L 4488
LANCASTER (EAST) (2012)	2,618.109 798.002	L&BM TAG IN CONC SLAB OF FIRE HYD 1655' W/O 170TH ST E & 45' S/O C/L AVE J	L 4489
LANCASTER (EAST) (2012)	2,683.183 817.837	2" IP W/CONC PLUG & NAIL 10' NW/O PP #1721253E 40' N & 40' W/O C/L INT AVE J & 170TH ST E	L 4490
LANCASTER (EAST) (2012)	2,349.855 716.238	CS MON FL 40' N & 40' W/O C/L INT AVE E & 100TH ST E MKD (REDMEN SCHOOL G 14 RM 2 1972) MKR POST 2' S/O MON	L 4491
LANCASTER (EAST) (2012)	2,353.840 717.453	CS MON IN WELL 10" DN @ C/L INT AVE E & 105TH ST E MKD (21,28,R10W,T8N,RE 5869)	L 4492

QUAD YEAR	ELEV FOOT/METER	DESCRIPTION	BM NUMBER
LANCASTER (EAST) (2012)	2,354.059 717.519	RDBM MON IN WELL 34' S & 119' E/O C/L INT AVE E & 105TH ST E MKD (1974) MKR 2' S/O MON	L 4493
LANCASTER (EAST) (2012)	2,367.147 721.509	2" IP W/CS TAG 3" UP 50' N & 50' E/O C/L INT AVE E & 125TH ST E MKR POST 10" N/O MON	L 4494
LANCASTER (EAST) (2012)	2,409.569 734.439	RDBM MON IN WELL 66' N & 37' E/O C/L INT 120TH ST E & AVE G-8 MKD (1974) MKR POST 2' E/O MON	L 4496
LANCASTER (EAST) (2012)	2,400.587 731.701	RDBM MON IN WELL 44' S & 58' W/O C/L INT 120TH ST E & AVE G MKD (1974) MKR 2' W/O MON	L 4497
LANCASTER (EAST) (2012)	2,457.453 749.034	2" IP W/CONC PLUG & BRAD, UP 3", SE COR AVE G & 140TH ST E, 50' S & 50' E/O CL INT, 1' N/O MKR POST	L 4506
LANCASTER (EAST) (2012)	2,562.552 781.068	RDBM TAG IN NW COR OF CONC VAULT 0.25MI W/O C/L 150TH ST E & 30' S/O C/L AVE G	L 4507
LANCASTER (EAST) (2012)	2,672.721 814.648	CS MON IN WELL 8" DN @ C/L INT AVE G & 155TH ST E MKD (1/4 COR 32,5,T7N,T8N,R9W,RE 5869)	L 4508
LANCASTER (EAST) (2012)	2,452.800 747.616	RDBM MON IN WELL 170' E/O C/L 100TH ST E & 33' N/O C/L AVE J 10' NW/O PP #CAB43 MKD (1977)	L 4574
LANCASTER (EAST) (2012)	2,370.450 722.515	CS MON IN WELL 8" DN @ C/L INT AVE E & 130TH E MKD (CO ENGR 23,24,25,26,T8N,R10W,RE 7078)	L 4765
LANCASTER (EAST) (2012)	2,357.356 718.524	CS MON IN WELL 14" DN @ C/L INT AVE E & 110TH ST E MKD (21,22,27,28,T8N,R10W,RE 5869)	L 4766
LANCASTER (EAST) (2012)	2,517.247 767.259	CS MON IN WELL 2' DN @ C/L INT 150TH ST E & AVE K MKD (19,20,30,29,R9W,T7N,1927)	L 4768
LANCASTER (EAST) (2012)	2,924.208 891.301	2" IP 8" UP @ SW COR AVE J & 195TH ST E 40' S & 40' W/O C/L INT	L 4772
LANCASTER (EAST) (2012)	3,041.336 927.002	2" IP W/CE TAG 8" M UP @ SE COR 230TH ST E AVE F-8 50' S & 50' E/O C/L INT	L 4793
LANCASTER (EAST) (2012)	2,901.950 884.517	CSBM MON 58' N C/L FUT J-8 & 58' W/O C/L 240TH ST E MKD (BM 124-49A 1972 RE 7078) MKR POST 2' E/O MON	L 4797
LANCASTER (EAST) (2012)	2,902.329 884.633	CS MON IN WELL 8" DN @ C/L INT 240TH ST E & FUT AVE J-8 MKD (1/4 COR 22,23,T7N,R8W,RE 7078)	L 4798
LANCASTER (EAST) (2012)	2,888.677 880.471	CSBM MON 60' N/O C/L FUT AVE K & 66' E/O C/L 240TH ST E MKD (BM 124-50A 1972 RE 7078) MKR POST 2' W/O MON	L 4799
LANCASTER (EAST) (2012)	2,844.266 866.935	CS MON IN WELL 9" DN @ C/L INT 240TH ST E & FUT AVE L MKD (26,27,34,35,T7N,R8W,RE 7078)	L 4800
LANCASTER (EAST) (2012)	2,845.913 867.437	CSBM MON 66' S/O C/L FUT AVE L & 60' W/O C/L 240TH ST E MKD (BM 124-52A 1972 RE 7078) MKR POST 2' E/O MON	L 4801
LANCASTER (EAST) (2012)	2,838.793 865.267	CSBM MON 58' N/O C/L FUT AVE L-8 & 66' W/O C/L 240TH ST E MKD (124-53A 1972 RE 7078) MKR POST 2' E/O MON	L 4802
BASELINE (2010)	2,557.653 779.575	2" IP WITH DPW BM TAG FLUSH @ NE COR 90TH ST E & AVE N 76' E & 30' N/O C/L INT MKR POST 2' E/O MON	L 5185

QUAD YEAR	ELEV FOOT/METER	DESCRIPTION	BM NUMBER
BASELINE (2010)	2,528.051 770.552	2" IP WITH DPW BM TAG FLUSH @ NW COR 90TH ST E & AVE M 56' W & 31' N/O C/L INT MKR POST 2' E/O MON	L 5186
BASELINE (2010)	2,577.669 785.676	CS MON IN WELL 1.5' DN @ C/L INT 90TH ST E & AVE O	L 5528
BASELINE (2010)	2,342.614 714.031	DPW BM TAG IN W SIDE CONC BASE OF SIGN POST @ NE COR AVE E & 90TH ST E 36' E & 53' N/O C/L INT	L 5669
BASELINE (2010)	2,502.467 762.754	2" IP W/CONC PLUG & DPW BM TAG FL 5' E/O PP #4244909E @ SE COR 90TH ST E & AVE L 42' S & 33' E/O C/L INT	L 5670
BASELINE (2010)	2,395.234 730.070	DPW BM TAG IN NELY COR OF CONC GTE CALL BOX PAD @ SW COR 90TH ST E & AVE H 110' S & 28' W/O C/L INT	L 5673
BASELINE (2010)	2,393.651 729.587	DPW BM TAG IN SE COR CONC BASE FOR WATER TANK MOTOR @ NW COR 90TH ST E & AVE H 130' N & 38' W/O C/L INT	L 5674
BASELINE (2010)	2,776.132 846.168	2" IP W/DPW BM TAG 3" UP 30' N/O C/L AVE M (DIRT RD) NR 225TH ST E MKR POST 2' N/O MON	L 5848
BASELINE (2010)	2,758.321 840.739	CS MON 4" UP @ NE COR AVE M & 220TH ST E 15' N & 40' E/O C/L INT MKD (ADOBE MTN B 13 RM 1 1972 RE 7078) MKR POST 2' NW/O MON	L 5849
BASELINE (2010)	2,757.232 840.407	CS MON FLUSH @ NW COR AVE M & 220TH ST E 28' W & 47' N/O C/L INT MKD (ADOBE MTN B 13 RM 2 1972 RE 7078) MKR POST 2' SW/O MON	L 5850
BASELINE (2010)	2,610.348 795.636	2" IP W/CE TAG @ NE COR AVE M & 180TH ST E 46' E & 23' N/O C/L INT	L 5851
BASELINE (2010)	2,597.115 791.603	2" IP W/CS TAG 10" UP 50' N/O C/L AVE M ON C/L 175TH ST E MKR POST 5' S/O MON	L 5852
BASELINE (2010)	2,617.851 797.923	DPW BM TAG IN NE COR CONC EDISON VAULT 92' E & 30' S/O C/L INT 150TH ST E & AVE N-8	L 5855
BASELINE (2010)	2,678.663 816.459	2" IP W/CONC PLUG & 42 SHELL CASING 6" UP @ NW COR AVE O & 140TH ST E 40' N & 40' W/O C/L INT 16' NW/O PP (NO#)	L 5858
BASELINE (2010)	2,775.714 846.040	1.5" IP W/CONC PLUG & NAIL 1' DN @ NW COR AVE O & LONGVIEW RD 60' N & 60' W/O C/L INT MKR POST 2' N/O MON	L 5859
BASELINE (2010)	2,777.667 846.635	2" IP W/CONC PLUG & DPW BM TAG 3' E PP (NO#) @ NE COR AVE O & 130TH ST E 43' N & 45' E/O C/L INT	L 5860
BASELINE (2010)	2,618.454 798.107	2" IP W/CONC PLUG & DPW BM TAG 3' E/O WLY MOST PP STUB 15' W C/L 115TH ST E & 76' N/O C/L AVE O	L 5861
BASELINE (2010)	2,609.007 795.228	DPW BM TAG IN S SIDE CONC BASE OF WATER DIST MH @ SW COR AVE O & 110TH ST E 23' W & 82' S/O C/L INT	L 5863
LANCASTER (EAST) (2012)	2,982.962 909.210	CSBM MON 3" UP @ SW COR AVE J & 250TH ST E 70' S & 50' W/O C/L INT 25' S/O PP #1897663E MKD (BM 124-46A 1972) MKR POST 2.5' N/O MON	L 5922
LANCASTER (EAST) (2012)	2,994.463 912.715	2" IP W/CS TAG 3" UP @ SW COR 250TH ST E & AVE H-8 63' W & 56' S/O C/L INT 17' W/O W SIDE CONC WATER VALVE VAULT	L 5923

QUAD YEAR	ELEV FOOT/METER	DESCRIPTION	BM NUMBER
LANCASTER (EAST) (2012)	3,070.003 935.740	CSBM MON 3" UP @ SE COR AVE G & 240TH ST E 59' E & 64' S/O C/L INT MKD (BM 124-36A 1972)	L 5924
LANCASTER (EAST) (2012)	3,040.682 926.803	2" IP W/CE TAG 10" UP @ NE COR AVE G & 235TH ST E 53' N & 50' E/O C/L INT	L 5925
LANCASTER (EAST) (2012)	3,026.551 922.496	CSBM MON 3" UP @ SE COR AVE G & 230TH ST E 66' S & 53' E/O C/L INT MKD (124-34A 1972)	L 5926
LANCASTER (EAST) (2012)	3,075.223 937.331	2" IP W/DPW BM TAG 26' W/O C/L 230TH ST E & 0.50MI S/O AVE E @ FUTURE AVE E-8 MKR POST 10" W/O MON	L 5927
LANCASTER (EAST) (2012)	3,018.537 920.053	2" IP W/DPW BM TAG ON C/L PROD 230TH ST E 36'M N/O END AC PAV AVE E & 40' W/O C/L 230TH ST FR THE NORTH MKR POST 10" N/O MON	L 5928
LANCASTER (EAST) (2012)	3,074.647 937.155	2" IP W/DPW BM TAG 2' S/O PP (PARTIAL #_693033E) @ NE COR 200TH ST E & AVE E-8 89' N & 35' E C/L INT	L 5935
LANCASTER (EAST) (2012)	3,049.674 929.543	CO SURV CONTROL SYS REF MARK MON 2" UP @ NW COR 200TH ST E & AVE G 36' N & 34' W/O C/L INT MKD (HI VISTA M2 RM 2 1972 RE 7078)	L 5936
LANCASTER (EAST) (2012)	3,011.208 917.819	CSBM MON @ SE COR AVE G & 225TH ST E 60' S & 56' E/O C/L INT MKD (BM 124-33A 1972 RE 7078) MKR POST 2' N/O MON	L 5937
LANCASTER (EAST) (2012)	2,984.788 909.766	2" IP W/CONC PLUG & NAIL 8" DN @ NE COR AVE G & 220TH ST E 50' N & 50' E/O C/L INT	L 5938
LANCASTER (EAST) (2012)	3,053.416 930.684	2" IP W/CONC PLUG & CE TAG 3" UP @ NE COR AVE G & 180TH ST E 50' N & 50' E/O C/L INT	L 5939
LANCASTER (EAST) (2012)	2,936.666 895.098	CS BRASS MON FLUSH @ SE COR AVE G & 170TH ST E 46' S & 30' E/O C/L INT MKD (HI VISTA F 2 RM 2 1972 RE 7078) MKR POST 5' N/O MON	L 5940
LANCASTER (EAST) (2012)	2,602.021 793.098	DPW BM TAG IN NW COR CONC F HYD PAD @ SE COR AVE G & 150TH ST E 32' S & 80' E/O C/L INT	L 5941
LANCASTER (EAST) (2012)	3,059.167 932.437	2" IP W/DPW BM TAG @ SW COR AVE E & 225TH ST E 38' S & 10' W/O C/L DIRT RD INT MKR POST 10" S/O MON	L 5942
LANCASTER (EAST) (2012)	3,062.496 933.452	2" IP W/DPW BM TAG 12" UP @ SW COR AVE E & 210TH ST E 28' S & 26' W/O C/L DIRT RD INT	L 5943
LANCASTER (EAST) (2012)	3,073.759 936.885	2" IP W/DPW BM TAG 3" UP ON C/L PROD 205TH ST E & 46' N/O C/L AVE E (DIRT) 3' S/O 3" WOOD POST	L 5944
LANCASTER (EAST) (2012)	2,460.596 749.992	CS MON 3" UP 46' N & 46' W/O C/L INT 140TH ST E & AVE E-8 MKD (015 RM2 1972 RE 7078) MKR POST 2' E/O MON	L 5945
LANCASTER (EAST) (2012)	2,363.421 720.373	DPW BM TAG IN W CB OF ISLE 6' N/O BCR 20' N/O C/L AVE E & 16' W/O C/L 120TH ST E	L 5946
LANCASTER (EAST) (2012)	2,397.760 730.839	DPW BM TAG ON SW COR CONC STAND PIPE @ NW COR AVE H & 95TH ST E 111' W & 79' N/O C/L INT	L 5948
LANCASTER (EAST) (2012)	2,403.934 732.721	2" IP W/CONC PLUG & DPW BM TAG FL 6' S/O PP (#K9435Y) @ SW COR AVE H & FUT 105TH ST E 30' S & 5' W/O C/L INT MKR POST 2' S/O MON	L 5949

QUAD YEAR	ELEV FOOT/METER	DESCRIPTION	BM NUMBER
LANCASTER (EAST) (2012)	2,449.604 746.642	L&BRAD IN CONC IN WELL @ C/L INT AVE J & 100TH ST E	L 5952
LANCASTER (EAST) (2012)	2,492.728 759.786	DPW BM TAG IN NE COR CONC PIPE COLLAR @ SE COR AVE J & 150TH ST E 32' E & 20' S/O C/L INT	L 5955
LANCASTER (EAST) (2012)	2,392.396 729.205	1" IP W/CONC PLUG & BRAD 10" DN 50' S & 43' W/O C/L INT 120TH ST E & AVE F-8	L 5957
LANCASTER (EAST) (2012)	2,488.029 758.354	CS BRASS MON NR MCR AC CURB @ NW COR 110TH ST E & AVE K 30' N & 33' W/O C/L INT MKD (ALPINE BUTTE RM 2 1972) MKR POST 18" NW/O MON	L 5962
LANCASTER (EAST) (2012)	2,554.226 778.530	2" IP W/CONC PLUG & DPW BM TAG 15" E/O PP (NO#1185433E) 102' W & 28' N C/L INT AVE M & 110TH ST E	L 5964
LANCASTER (EAST) (2012)	2,553.416 778.284	2" IP W/CONC PLUG & DPW BM TAG 15" E/O PP #335237E 233' W & 28' N/O C/L INT AVE M & 110TH ST E	L 5965
LANCASTER (EAST) (2012)	2,520.215 768.164	CAL-TRANS MON 6" UP @ NE COR 150TH ST E & AVE K 92' E & 44' N/O C/L INT MKD (SON A 1983)	L 5966
LANCASTER (EAST) (2012)	2,505.688 763.736	DPW BM TAG IN NW COR CONC SLAB @ NW COR 150TH ST E & FUT AVE J-8 270' W/O & 46' N/O C/L INT 46' N/O STAND PIPE	L 5968
LANCASTER (EAST) (2012)	2,410.531 734.732	2" IP W/NAIL FLUSH, 36' S & 43' E/O CL INT 120TH ST E & AVE G-8, 2' W/O MKR	L 5969
BASELINE (2010)	2,648.170 807.165	DPW BM TAG IN N END, CTR, CONC UTIL BOX @ NW COR 150TH ST E & AVE O 105' N & 40' W/O C/L INT	L 6294
LANCASTER (EAST) (2012)	2,862.201 872.401	2.5" IP CONC PLUG & CS TAG 6" UP @ SE COR 240TH ST E & AVE K-8 50' S/O & 52' E/O C/L INT MRK POST 2' E/O MON USE CHIS MRK ON S SIDE OF PIPE	L 6319
LANCASTER (EAST) (2012)	3,058.327 932.181	LA CO DPW WASH & BN ON 3" WOOD POST UP 6" 40' S/O C/L AVE E & ON C/L 215TH ST E	L 6321
LANCASTER (EAST) (2012)	2,417.198 736.764	2" IP W/CONC PLUG & DPW W & SPK FL 167' W/O C/L 115TH ST E & 25' S/O AVE H 3' W/O PP#1200436E	L 6323
LANCASTER (EAST) (2012)	2,416.935 736.684	2" IP W/CONC PLUG & DPW BM TAG UP 12" @ SE COR 115TH ST E & AVE H 28' S & 68' E/O C/L INT 2' S/O PP#1586872E	L 6324
BASELINE (2010)	2,444.256 745.011	L & DPW BM TAG IN CONC FOOTING FENCE POST 38' N & 50' E OF C/L INT AVE J & 90TH ST E	L 6350
LANCASTER (EAST) (2012)	2,456.619 748.780	L & DPW TAG IN NE COR CONC SLAB @ SW COR AVE J & 110TH ST E 82' W/O & 88' S/O C/L INT 2' S/O PP STUB	L 6351
LANCASTER (EAST) (2012)	2,421.420 738.051	2" IP W/CONC PLUG & DPW BM TAG FLUSH 18" W/O PP #1937870E 13' N & 66' E/O C/L INT 110TH ST E & AVE H-8	L 6352
BASELINE (2010)	2,578.209 785.840	LA CO BM DISC MRK'D 7238, 57' NE/O CL INT 90TH ST E. & AVE O, FNC COR FTG	L 7238
BASELINE (2010)	2,567.120 782.461	2" IP W/CO ENG'R TAG UP 6", 70' SE/O CL INT 90TH ST E. & AVE N-8, 60' S/O PP 4205073E, MP 1' S'LY	L 7239

QUAD YEAR	ELEV FOOT/METER	DESCRIPTION	BM NUMBER
BASELINE (2010)	2,563.529 781.366	CE MON MRK'D RE 5869, BM 107-15-1961, 0.25MI S/O & 60' E/O CL INT AVE N & 90TH ST E., MP 3' S'LY	L 7240
BASELINE (2010)	2,556.417 779.198	2"IP & CE TAG, 100' SW'LY/O CL INT 90TH ST E & AVE N (MP 1.5' SW)	L 7241
BASELINE (2010)	2,582.932 787.280	1.5" IP DN 11", 71' NW OF CL INT AVE O & 95TH ST E.	L 7280
BASELINE (2010)	2,607.192 794.675	1.5" IP DN 4", 68' NW OF CL INT AVE O & 110TH ST E., 2' N/O MILE MKR POST	L 7281
BASELINE (2010)	2,669.727 813.735	2" IP W/DPW TAG DN 4", 71' NW OF CL INT AVE O & 120TH ST E.	L 7282
BASELINE (2010)	2,749.701 838.111	2" IP W/DPW TAG FLUSH, 71' NW OF CL INT AVE O 125TH ST E	L 7283
BASELINE (2010)	2,772.236 844.980	2" IP W/CO ENG'R TAG DN 5", 71' SE OF CL INT AVE O & 130TH ST E.	L 7284
BASELINE (2010)	2,766.153 843.126	CALIF DIV OF HWY MON FLUSH, 60' S/O & 0.25MI E/O CL INT AVE O & 125TH E, MRK'D ALP 1984, 2' N/O MILE MKR POST	L 7285
BASELINE (2010)	2,673.038 814.744	1.5" IP FLUSH, 70' SE OF CL INT AVE O & 140TH ST E	L 7286
BASELINE (2010)	2,579.714 786.299	DPW TAG IN CONC FTG FENCE COR @ NW COR AVE M & 160TH ST E	L 7287
BASELINE (2010)	2,777.141 846.475	2"IP W/CO ENG'R TAG UP 4", 50' N/O AVE M & 225TH ST E	L 7288
BASELINE (2010)	2,649.349 807.524	2" IP W/ DPW BM DISK MRK'D 7293, 50' N/O AVE O & 145TH ST E. NEAR CL PROD, 2' S/O MKR POST	L 7293
BASELINE (2010)	2,608.950 795.210	2" IP W/LA CO BM DISK MRK'D 7295 DN 2", 60' S & 60' W/O CL INT AVE M & 180TH ST E	L 7295
BASELINE (2010)	2,477.810 755.239	CE MON , 70' S & 30' W/O CL INT 90TH ST E. & AVE K, MRK'D RE5869 BM 107-22-1961, 2' W/O GUY POLE	L 7351
BASELINE (2010)	2,504.286 763.309	2" IP W/FC DISK MRK'D 7352, UP 18", SW COR 90TH ST E & AVE L, 62' W & 36' S/O CL INT	L 7352
BASELINE (2010)	2,493.855 760.129	L&T SW COR CONC SLAB, 65' N & 98' E/O CL INT 90TH ST E & AVE K-8	L 7353
BASELINE (2010)	2,475.777 754.619	CS MON, CL INT 90THST E & AVE K	L 7354
BASELINE (2010)	2,461.370 750.228	2" IP W/SPK & DPW TAG, 60' S & 90' E/O 90TH ST E & AVE J-8, 5' W/O SW COR CONC WELL PAD	L 7356
BASELINE (2010)	2,460.764 750.043	FC DISK MRK'D 7357, 30' S & 88' E/O CL INT 90TH ST E & AVE J-8, NW COR 15' HIGH WOOD WALL	L 7357

QUAD YEAR	ELEV FOOT/METER	DESCRIPTION	BM NUMBER
BASELINE (2010)	2,403.147 732.481	BM TAG, 120' N & 140' E/O CL INT 90TH ST E & AVE H-8, E'LY SIDE OF CONC FTG 2" METAL POST 5' HIGH	L 7358
LANCASTER (EAST) (2012)	2,345.658 714.959	2" IP W/FC DISK MRK'D 7359 UP 3", 67' N & 18' E/O CL INT 95TH ST E & AVE E, 2' S/O PP#1001264	L 7359
LANCASTER (EAST) (2012)	2,369.277 722.158	CAL-TRANS MON MRK'D RED 2, 1983, 87' S & 680' E/O CL INT 110TH ST E & AVE E, 60' S/O PP#1587033	L 7360
LANCASTER (EAST) (2012)	2,370.094 722.407	CAL-TRANS MON MRK'D RED , 1983, 45' S & 690' E/O CL INT 110TH ST E & AVE E, 15' E/O PP#1587033, 2' S/O MKR POST	L 7361
LANCASTER (EAST) (2012)	2,363.336 720.347	1.5" IP W/SPK & W LS7850 UP 1", 45' N & 330' W/O CL INT 115TH ST E & AVE E, SE COR FENCE HSE#11317, 0.5' NW/O MKR POST	L 7362
LANCASTER (EAST) (2012)	2,370.020 722.384	CS MON 30' S & 36' W/O CL INT AVE E & 130TH ST E, 9' SW'LY OF W/END HDWL, NR MM#13.02	L 7363
LANCASTER (EAST) (2012)	2,401.067 731.847	LA CO BM DISK MRK'D 7364, 85' S & 15' W/O AVE H & 100TH ST E, 9' S/O PP#1122755E	L 7364
LANCASTER (EAST) (2012)	2,435.539 742.355	2" IP W/SPK & DPW W. UP 2", 52' N & 30' W/O CL INT 110TH ST E & AVE I, 2' W/O PP#649590E	L 7365
LANCASTER (EAST) (2012)	2,469.856 752.814	1" DPW DISK IN CONC FTG, 54' E & 0.4MI S/O CL INT 110TH ST E & AVE J, 18' S/O PP#1341710E	L 7366
LANCASTER (EAST) (2012)	2,489.530 758.811	2" IP W/SPK & DPW W. UP 2", 30'S & 95' W/O CL INT 110TH ST E & AVE K, 2' S/O PP#18055468E	L 7367
LANCASTER (EAST) (2012)	2,500.757 762.233	2" IP W/SPK & DPW W. UP 2", 155' N & 560' E/O CL INT 110TH ST E & AVE K-8, 2' S/O MKR POST	L 7368
LANCASTER (EAST) (2012)	2,501.994 762.610	2" IP W/SPK & DPW W. UP 5", 65' N & 22' E/O CL INT 110TH ST E & AVE K-8, 2' N/O PP#2038127E	L 7369
LANCASTER (EAST) (2012)	2,520.419 768.226	2" IP W/ SPK & DPW W. UP 5", 45' N & 25' E/O CL INT 110TH ST E & AVE L, 1' E/O PP#274061E	L 7370
LANCASTER (EAST) (2012)	2,518.723 767.709	2" IP W/ SPK & DPW W. UP 5", 35' S & 100' W/O CL INT 110TH ST E & AVE L, 2' W/O MKR POST	L 7371
LANCASTER (EAST) (2012)	2,527.645 770.429	2" IP W/ SPK & DPW W. UP 5", 0.75MI N & 60' W/O CL INT 110TH ST E & AVE M, 5' E/O PP#938424E	L 7372
LANCASTER (EAST) (2012)	2,535.538 772.834	2" IP W/ SPK & DPW W. UP 5", 0.50MI N & 75' W/O CL INT 110TH ST E & AVE M, 2' W/O MKR POST	L 7373
LANCASTER (EAST) (2012)	2,548.679 776.840	2.5" IP W/ SPK & DPW W. DN 14", 26' N & 33' E/O CL INT 105TH ST E & AVE M, 25' W/O PP#390191E, 2"N/O MKR POST	L 7374
LANCASTER (EAST) (2012)	2,542.049 774.819	1.5" IP W/CONC PLUG & NAIL DN 4", 54' N & 54' W/O CL INT 100TH ST E & AVE M, 2"N/O MKR POST	L 7375
LANCASTER (EAST) (2012)	2,448.036 746.164	L&T IN WELL DN 10", CL INT 95TH E & AVE J	L 7376
LANCASTER (EAST) (2012)	2,463.400 750.847	CHS ARROW @WELD BEAD TOP 12" VENT PIPE, 10' W & 33' N/O CL INT AVE J & 105TH ST E, 10' W/O PP#K8334Y	L 7377

QUAD YEAR	ELEV FOOT/METER	DESCRIPTION	BM NUMBER
LANCASTER (EAST) (2012)	2,478.075 755.320	1.5" IP W/GEAR SPK & W LS7850, 40' E & 0.30MI N/O CL INT AVE I & 140TH ST E, 100' N/O PP#1014886E	L 7378
LANCASTER (EAST) (2012)	2,452.433 747.504	1.5" IP W/SPK & DPW W. UP 2", CL AVE H-8 & 40' E/O 140TH ST E, 1' W/O MKR POST	L 7379
LANCASTER (EAST) (2012)	2,456.923 748.872	1" IP W/LA CO DPW 1" DISK, 115' N & 53' E/O CL INT 140TH ST E & AVE G-8, SW COR CONC TELE PAD	L 7380
LANCASTER (EAST) (2012)	2,521.305 768.496	1.5" IP W/SPK & DPW W. UP 2", CL INT 145TH ST E & AVE G	L 7381
LANCASTER (EAST) (2012)	3,131.966 954.626	2.5" IP W/ LA CO BM DISK MRK'D 7382, 33' N & 21' W/O CL INT 190TH ST E & AVE G	L 7382
LANCASTER (EAST) (2012)	3,064.462 934.051	L&DPW TAG 40' S & 60' E/O CL INT 197TH ST E & AVE G, SW COR FH PAD	L 7383
LANCASTER (EAST) (2012)	2,678.201 816.318	L&DPW TAG, 45' S & 75' W/O CL INT AVE J & 170TH ST E, NW COR FH PAD	L 7384
LANCASTER (EAST) (2012)	2,515.535 766.737	1" IP W/DPW TAG DN 8", 50' N & 50' E/O CL INT AVE J & 160TH ST E, 2' S/O MKR POST	L 7385
LANCASTER (EAST) (2012)	2,514.887 766.540	SPK&DPW W IN 12" CASING DN 8", 36' S/O AVE J & CL PROD 160TH ST E, 2' S/O MKR POST	L 7386
LANCASTER (EAST) (2012)	2,497.554 761.257	LA CO BM DISK MRK'D 7387, 30' S & 160' E/O CL INT AVE J & 155TH ST E, SE COR CONC PAD	L 7387
LANCASTER (EAST) (2012)	2,498.919 761.673	2" IP W/SPK & DPW W. UP 4", 36' N & 80' W/O CL INT AVE J & 155TH ST E, 4' N/O PP#4556753E	L 7388
LANCASTER (EAST) (2012)	2,492.844 759.821	DPW BM TAG, 240' N & 40' E/O AVE J & 150TH ST E, SE COR CONC BASE OF STAND PIPE	L 7389
LANCASTER (EAST) (2012)	2,394.694 729.905	2" IP W/CE TAG UP 6", 50' N & 50' E/O CL INT AVE F-8 & 120TH ST E	L 7390
LANCASTER (EAST) (2012)	2,381.279 725.816	1" IP CONC PLUG & BRAD DN 8", 73' SE/O CL INT AVE F & 120TH ST E, 2' SE/O MKR	L 7391
LANCASTER (EAST) (2012)	2,380.902 725.701	1" IP CONC PLUG & BRAD , 70' NW/O CL INT AVE F & 120TH ST E	L 7392
LANCASTER (EAST) (2012)	2,380.533 725.589	2" IP W/CE TAG UP 6", 50' S & 50' W/O CL INT AVE E-8 & 120TH ST E	L 7393
LANCASTER (EAST) (2012)	2,376.127 724.246	2" IP W/DPW TAG UP 6", 50' N & 50' E/O CL INT AVE E-8 & 120TH ST E	L 7394
LANCASTER (EAST) (2012)	2,565.047 781.829	2" IP W/CE TAG UP 1", 71' NW/O CL INT 150TH ST E & AVE L-8	L 7395
LANCASTER (EAST) (2012)	2,506.055 763.848	2" IP W/LA CO BM DISK MRK'D 7395 UP 3", 62' S & 62' W/O 150TH ST E & AVE J-8	L 7396

QUAD YEAR	ELEV FOOT/METER	DESCRIPTION	BM NUMBER
LANCASTER (EAST) (2012)	2,582.653 787.195	2" IP W/CE TAG UP 1", 71' SW/O CL INT 170TH ST E & AVE L-8	L 7397
LANCASTER (EAST) (2012)	2,585.980 788.209	2" IP W/CE TAG UP 1", 71' NE/O CL INT 170TH ST E & AVE L-8	L 7398
LANCASTER (EAST) (2012)	2,565.210 781.878	LA CO BM DISK MRK'D 7398, 60' S & 48' E/O CL INT AVE K-8 & 170TH ST E, NE COR CONC PAD	L 7399
LANCASTER (EAST) (2012)	2,581.295 786.781	LA CO BM DISK MRK'D 7400, 45' N & 36' E/O CL INT AVE L & 170TH ST E, NW COR CONC PAD	L 7400
LANCASTER (EAST) (2012)	2,589.689 789.340	1.5" IP W/CONC PLUG & BRAD DN 2", 72' SW/O CL INT 170TH ST E & AVE K, 2' W/O MKR POST	L 7401
LANCASTER (EAST) (2012)	3,097.490 944.118	LA CO BM TAG ON CONC FTG, 50' N & 50' W/O CL INT AVE E & 200TH ST E	L 7402
LANCASTER (EAST) (2012)	3,059.362 932.496	4" BR DISK MRK'D CORPS OF ENGR. US ARMY, 40' W & 0.2MI N/O CL INT 200TH ST E & AVE F, 4' E/O MKR	L 7403
LANCASTER (EAST) (2012)	3,050.281 929.728	2" IP W/CE TAG UP 8", 50' N & 50' E/O CL INT AVE F & 200TH ST E	L 7404
LANCASTER (EAST) (2012)	2,940.262 896.195	4" BR DISK MRK'D COUNTY SURVEYOR CONTROL SYSTEM - VISTA F2, 1972, 30' N & 45' E/O CL INT 170TH ST E & AVE G	L 7405
LANCASTER (EAST) (2012)	2,854.716 870.120	2" IP W/CE TAG UP 2", 71' SE/O CL INT AVE G & 165TH ST E	L 7407
LANCASTER (EAST) (2012)	2,992.582 912.142	2" IP W/CE TAG UP 8", 50' N & 50' E/O CL INT AVE H-8 & 250TH ST E	L 7408
LANCASTER (EAST) (2012)	3,085.158 940.359	LA CO BM TAG IN ROCK UP 12", 105' W/O EP & 0.33MI S/O AVE E & 230TH ST E	L 7409
LANCASTER (EAST) (2012)	3,019.088 920.221	CO SUR MON MRK'D SEC COR DN 1", 8' W/O EP, 20' S/O DIRT RD, CL INT 230TH ST E & AVE E, 1' NE OF MKR POST	L 7410
LANCASTER (EAST) (2012)	2,954.651 900.580	2" IP W/CE TAG UP 8", 50' N & 50' E/O CL INT AVE G & 250TH ST E	L 7411
LANCASTER (EAST) (2012)	3,050.192 929.701	2" IP W/SPK & DPW W. UP 2", 30' E & 30' N/O DIRT RD, AVE E & 222ND ST E, 3' S/O MRK'R POST	L 7412
LANCASTER (EAST) (2012)	2,839.101 865.361	2" IP W/CE TAG UP 6", 50' N & 50' W/O CL INT AVE L-8 & 240TH ST E	L 7414
LANCASTER (EAST) (2012)	2,862.142 872.384	2" IP W/CE TAG UP 2", 50' N & 50' W/O CL INT AVE K-8 & 240TH ST E	L 7415
LANCASTER (EAST) (2012)	2,927.733 892.376	1" IP CONC PLUG & BRAD DN 8", 73' NE/O CL INT AVE J & 240TH ST E, 2' E/O MKR	L 7416
LANCASTER (EAST) (2012)	2,882.382 878.553	1" IP CONC PLUG & BRAD DN 8", 70' NW/O CL INT AVE J & 210TH ST E	L 7417