

COUNTY OF LOS ANGELES
ROAD DEPARTMENT

PRECISE
BENCH MARK LIST



LANCASTER QUAD
EAST
1975 ADJUSTMENT

(1977 RE-ADJUSTMENT)

N O T E

In lieu of a complete readjustment of this Quad in 1977, alterations were applied to 1975 elevations in high subsidence pockets. These changes are reflected by the "As and Ds" following the bench numbers i.e. CL 2240 A and CL 2241 D. The "A" benches are compatible with the 1975 adjustment of the unlettered benches and the "D" benches. The "D" benches are compatible with the closest "A" bench and other "D" benches but not the unlettered benches.

P R E F A C E

The Road Department level net is composed of more than 2,000 miles of levels supporting in excess of 12,000 bench marks. In 1975, a major readjustment of the net was undertaken. To emphasize the complete break with previous elevations, the BY,BG & BL series bench marks have been relabeled CY,CG & CL, respectively.

To facilitate the adjustment, indexing, and distribution of adjusted values of the net, the County territory is divided into 34 quads or areas. For identification purposes each quad is given a name, viz., "Rosemead," "La Mirada," "Santa Fe," etc. When bench marks and elevations in the Road Department net are used, the name of the quad in which the bench mark is located and the date of the adjustment of the elevation must be included in the bench mark description, e.g.,

CG 6234 --L&BN IN CONC HDWL OF DRAIN PIPE UNDER DR 218 FT
NE&18 FT SE C/L INT GRAND AVE & CAMERON AVE MKD (BM)
(COVINA -1975) ELEV. 696.238

Experience indicates that this general adjustment will, for the most part, remain sound for the next 10 years. Updating constrained adjustments will be made in 5 years. It is expected that these updating adjustments will be in the nature of a few hundredths of a foot. When a quad is readjustment, new elevation lists will be published and the date of the readjustment will replace the "1975" at the end of the bench mark description. Two bench marks with different adjustment dates will not normally agree with each other.

The basic accuracy of the net is reflected by an indicated field probable error of plus or minus 0.012 foot per mile of leveling as determined from over 600 conditions of closure. However, many years experience in vertical control in the greater Los Angeles basin and Antelope Valley indicate that because of varying degrees of subsidence and heaving, the true datum is recovered only by obtaining substantial agreement of a number of bench marks.

The users of this net are invited to assist in its maintenance by notifying this Department of cases of obliteration, apparent mistakes in descriptions or elevations, and proven disturbance of bench marks.

Drive or Driveway
 --- Machine at Floor
 E/O --- DATUM U. S. Coast and Geodetic Survey Sea Level Datum Monument
 of 1929, through the medium of the Los Angeles
 ECR --- End of County Engineer Precise Level Net. --- North of

ABBREVIATIONS USED IN BENCH MARK LISTINGS

ABUT - - - - -	Abutment	EC - - - - -	End of Curve
ALG - - - - -	Along	ENT - - - - -	Entrance
ANG PT - - - - -	Angle Point	FL - - - - -	Floor
B/W - - - - -	Back of Walk	FTG - - - - -	Footing
BCR - - - - -	Beginning of Curb Return	FRWY - - - - -	Freeway
BC - - - - -	Beginning of Curve	F/W - - - - -	Front of Walk
BLDG - - - - -	Building	GAR - - - - -	Garage
EM - - - - -	Bench Mark	HDWL - - - - -	Headwall
BT SPK - - - - -	Boat or Bolt Spike	HSE - - - - -	House
BR CAP - - - - -	Brass or Bronze Cap	HWY - - - - -	Highway
C B - - - - -	Catch Basin	INT - - - - -	Intersection
CTR - - - - -	Center	IP - - - - -	Iron Pipe
C/L - - - - -	Center Line	LT - - - - -	Left
C/L INT - - - - -	Center Line Intersection	LACE - - - - -	L. A. City Engineer
C/L PROD - - - - -	Center Line Produced	LACS - - - - -	L. A. Co. Engineer
CONC - - - - -	Concrete	L AFC - - - - -	L. A. Co. Flood Control
COR - - - - -	Corner	L&BN - - - - -	Lead and Bench Nail
COE - - - - -	Corps of Engineers	L&BR - - - - -	Lead and Brad
CULV - - - - -	Culvert	L&N - - - - -	Lead and Nail
CYN - - - - -	Canyon	L&SPK - - - - -	Lead and Spike
CB - - - - -	Curb	L&T - - - - -	Lead and Tack
CS MON - - - - -	Co. Engineer Monument	MCR - - - - -	Middle of Curb Return
CT SPK - - - - -	Cut Spike	MKD - - - - -	Marked
DR - - - - -	Drive or Driveway	MC - - - - -	Middle of Curve
E/O - - - - -	East of	MON - - - - -	Monument
W/O - - - - -	West of	N/O - - - - -	North of
ECR - - - - -	End of Curb Return		

ABBREVIATIONS USED IN BENCH MARK LISTINGS . . . CONTINUED

NR - - - - - Near
OPP - - - - - Opposite
PI - - - - - Point of Intersection
PK&W - - - - - PK Nail and Washer
P/L - - - - - Property Line
POST - - - - - Point on Semi-Tangent
PP - - - - - Power Pole
PVMT - - - - - Pavement
PROD - - - - - Produced
RD - - - - - Road
RDEM - - - - - Road Dept. Bench Mark
RDEM TAG - - - - - Road Dept. Bench Mark Tag
RR - - - - - Railroad
RT - - - - - Right
R/W - - - - - Right of Way
SDMH - - - - - Storm Drain Manhole
SMH - - - - - Sewer Manhole
SPK - - - - - Spike
ST&W - - - - - Spike Tin and Washer
S/O - - - - - South of
TP - - - - - Telephone Pole
USC&GS - - - - - U. S. Coast and Geodetic Survey
USGS - - - - - U. S. Geological Survey
WK - - - - - Walk
W/O - - - - - West of

K E R N

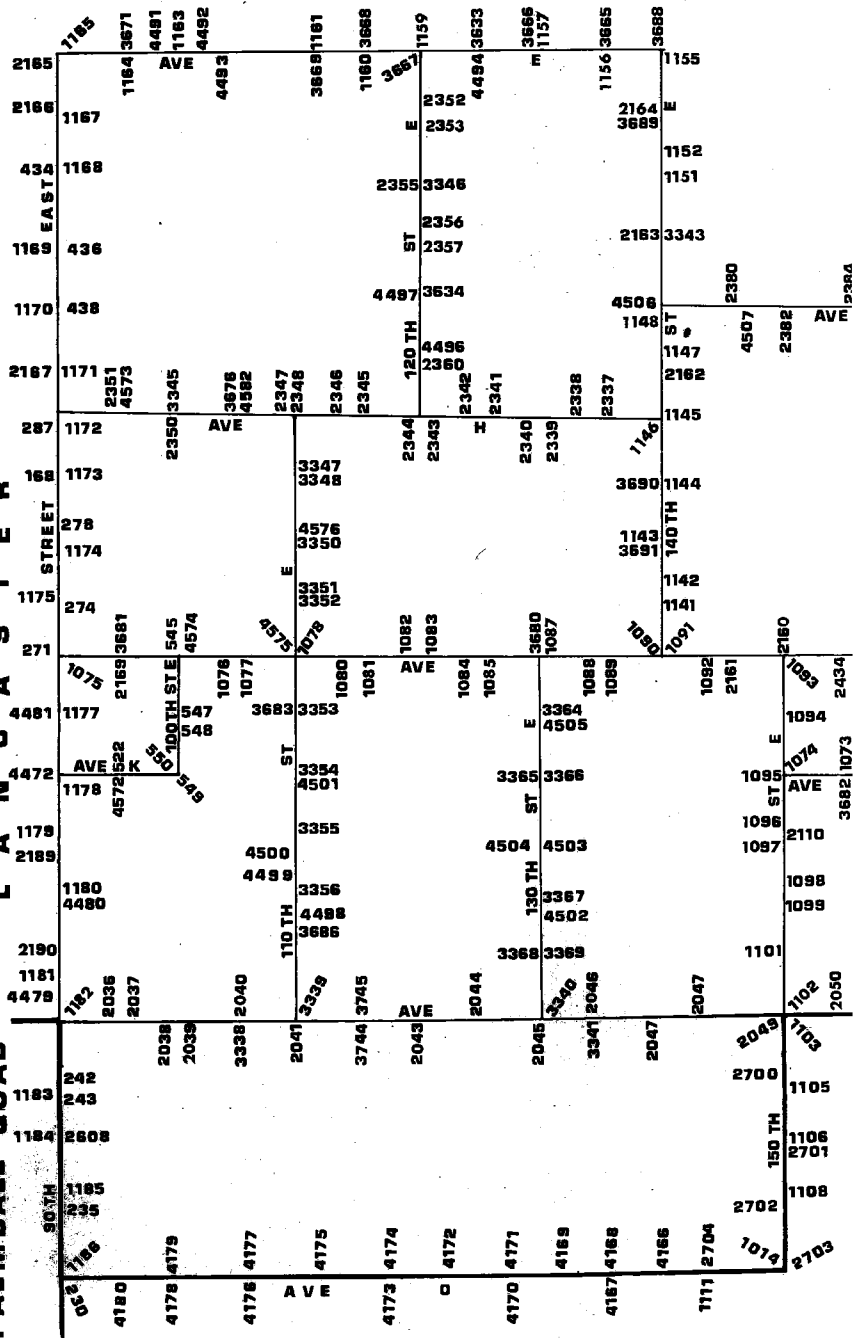
LANCAST

EAST

G U A D

L A N C A S T E R

P A L M D A L E Q U A D



QUAD-YEAR	ELEV	DESCRIPTION (INCLUDE QUAD AND YEAR IN DESCRIPTION)	BM NUMBER
BASELINE (1973)	2575.893	RDBM TAG CONC FTG OF 8FT CHAIN LINK FENCE AROUND CL EDISON SUB STA 30FT S & 30FT E C/L INT OF 90TH ST E & AVE O	230
BASELINE (1973)	2560.281	CS MON IN WELL 10IN DN @ C/L INT 90TH ST E & AVE CL N-8 MKD (1/4 COR 7 8 T6N R10W)	235
BASELINE (1973)	2535.607	CS MON IN WELL 18IN DN @ C/L INT 90TH ST E & AVE CL M-8 MKD (1/4 COR 5 6 T6N R10W)	242
BASELINE (1973)	2536.511	2IN IP (W EDGE) 12IN UP ON NW COR 90TH ST E & AVE M-8 40FT N & 40FT W C/L INT	243
LANCASTR (1975)	2441.061	CS MON IN WELL 15IN DN @ C/L INT 90TH ST E & AVE J MKD (CO SURV 18 17 19 20 T7N R10W 1926) USE S EDGE	271D
LANCASTR (1975)	2423.929	CS MON IN WELL 20IN DN @ C/L INT 90TH ST E & AVE I-8 MKD (CO SURV 1/4 SEC COR 17 18 T7N R10W) USE S EDGE	274D
LANCASTR (1975)	2411.406	CSMON IN WELL 12IN DN @ C/L INT 90TH ST E & AVE I MKD (CO SURV 7 8 17 18 T7N R10W) USE N EDGE	278D
LANCASTR (1975)	2392.012	CS MON IN WELL 19IN DN @ C/L INT 90TH ST E & AVE H MKD (CO SURV 5 6 7 8 T7N R10W)	286
LANCASTR (1975)	2392.965	RDBM TAG @ CTR OF OLD CONC BASE OF MTR MOUNT 40FT W C/L 90TH ST E & 100FT N C/L AVE H	287D
LANCASTR (1975)	2354.262	L&T IN S EDGE CONC SLAB UNDER WATER TOWER 45FT- N & 95FT W C/L INT 90TH ST E & AVE F MKD (SLBM)	433
LANCASTR (1975)	2353.572	CS MON 16IN DN @ C/L INT 90TH ST E & AVE F MKD (CO SURV 30 29 31 32 R10W T8N RE 2177) E EDGE	434D
LANCASTR (1975)	2364.074	2IN IP CONC PLUG & BT SPK IN WELL 15IN DN @ C/L INT 90TH ST E & AVE F-8 (USE SPK)	436D
LANCASTR (1975)	2373.241	RD MON IN WELL WITH CONC COLLAR @ SE COR 90TH ST E & AVE G 30FT E & 40FT S C/L INT MKD (1958)	438D
LANCASTR (1975)	2384.265	2IN IP IN CONC W/BR CAP ON C/L AVE G-8 30FT W C/L 90TH ST E MKD (CO SURV W C SEC 6 R10W T7N)	439
LANCASTR (1975)	2450.270	RDBM TAG CONC LID OF FLAT JUNCTION BOX 250FT W C/L 100TH ST E & 36FT N C/L AVE J SE EDGE/ LID	545D
LANCASTR (1975)	2447.384	L&T 2IN DN @ C/L INT AVE J & 100TH ST E	546D

QUAD-YEAR	ELEV	DESCRIPTION (INCLUDE QUAD AND YEAR IN DESCRIPTION)	BM NUMBER
LANCASTR (1975)	2465.906	RDBM TAG CONC PUMP BASE (OLD) 60FT W C/L 100TH ST E & 130FT N C/L AVE J-8	CL 547D
LANCASTR (1975)	2463.494	LACS MON IN WELL 14IN DN @ C/L INT 100TH ST E & AVE J-8 MKD(1/4 COR 20 21 R10W T7N) USE E EDGE	CL 548D
LANCASTR (1975)	2478.164	CS MON 12IN DN @ C/L INT 100TH ST E & AVE K MKD (T7N R10W 20-21-28-29 SEC COR) USE W EDGE	CL 549D
LANCASTR (1975)	2479.759	L&T CONC PORCH TO HSE NO 9861 40FT N & 45FT W C/L INT 100TH ST E & AVE K MKD(BM)	CL 550D
LANCASTR (1975)	2474.429	CS MON (S EDGE) IN WELL 18IN DN @ C/L INT AVE K & 95TH ST E PROP MKD (1/4 COR 20 29 T7N R10W)	CL 552D
BASELINE (1973)	2646.473	RDBM MON IN WELL W/COVER 5FT N PP NO 799921E 38FT N C/L AVE O & 365FT W 150TH ST E 2IN IP WITNESS 3FT UP 2FT N	CL 1014
BASELINE (1973)	2606.235	USC&GS MON IN TOP OF 6IN CONC POST FL 26FT E C/L 180TH ST E (DIRT RD) 32FT S C/L AVE M MKD(L S 18 1929-RESET 1941)	CL 1064
BASELINE (1973)	2593.844	CSBM MON 6IN UP 30FT N C/L AVE M & 34FT W C/L 175TH ST E 39FT SW 2IN IP WITH CS TAG 12IN UP MKD (BM 106-89 1959)	CL 1065
BASELINE (1973)	2584.352	CSBM MON 6IN UP ON SW COR AVE M & 170TH ST E 124FT S & 23FT W C/L INT MKD (BM 106-90 1959)	CL 1066
LANCASTR (1975)	2581.067	CS MON IN WELL 12IN DN @ C/L INT 170TH ST E & AVE L-8 MKD (1/4 COR 33 34 T7N R9W RE 5869)	CL 1067
LANCASTR (1975)	2578.297	CS MON IN WELL 13IN DN @ C/L INT 170TH ST E & AVE L MKD (33 34 27 28 R9W T7N RE 5869)	CL 1068
LANCASTR (1975)	2561.687	USGS MON 6IN UP 27FT S C/L AVE K-8 & 250FT W C/L 170TH ST E 7FT SW PP 423619 MKD (LS 17 1929)	CL 1069
LANCASTR (1975)	2551.606	CSBM MON 6IN UP 19FT S C/L AVE K-8 & 0.5MI W 170TH ST E MKD (BM 106-94 1959)	CL 1070
LANCASTR (1975)	2538.702	CSBM MON 6IN UP 18FT W C/L 160TH ST E & 550FT N AVE K-8 3FT S PP 423723E MKD (BM 106-95 1959)	CL 1071
LANCASTR (1975)	2533.964	CSBM MON 6IN UP 23FT N C/L AVE K & 205FT W C/L 160TH ST E 5FT N PP 423712E MKD (BM 106-96 1959)	CL 1072
LANCASTR (1975)	2525.892	CSBM MON 6IN UP 23FT N C/L AVE K & 16FT E C/L 155TH ST E 5FT N PP K7746Y 74FT SE WATER WELL SHAFT MKD (BM 106-97A 1959) USE W EDGE	CL 1073

QUAD-YEAR	ELEV	DESCRIPTION (INCLUDE QUAD AND YEAR IN DESCRIPTION)	BM NUMBER
LANCASTR (1975)	2516.622	CSBM MON 6 IN UP 83FT N & 17FT E C/L INT 150TH ST E & AVE K MKD (BM 106-98 1959)	CL 1074
LANCASTR (1975)	2441.937	CS BM MON 4IN UP 45FT N & 40FT E C/L INT 90TH ST E & AVE J MKD (BM 107-24 1961)	CL 1075D
LANCASTR (1975)	2460.940	RD BR CAP MON IN WELL W/COVER 5FT E PP NO K8333Y 30FT N C/L AVE J & 195FT W C/L 105TH ST E (PROP) 2IN IP WITNESS 3FT UP 2FT N	CL 1076D
LANCASTR (1975)	2457.723	RD BR CAP MON IN WELL W/COVER 5FT W PP NO K8335Y 30FT N C/L AVE J & 200FT E C/L 105TH ST E (PROP) 2IN IP WITNESS 3FT UP 2FT N	CL 1077D
LANCASTR (1975)	2451.728	CS MON IN WELL 15IN DN @ C/L INT AVE J & 110TH ST E MKD (CO SURV 15 16 21 22 T7N R10W 1925) USE W EDGE	CL 1078D
LANCASTR (1975)	2458.972	RD MON IN WELL W/COVER 4FT E PP NO 918158E 30FT N C/L AVE J & 105FT W C/L 115TH ST E (PROP) 2IN IP WITNESS 3FT UP 2FT N	CL 1080D
LANCASTR (1975)	2457.392	RD MON IN WELL W/COVER 4FT W PP NO 918590E 30FT N C/L AVE J & 190FT E C/L 115TH ST E (PROP) 2IN IP WITNESS 3FT UP 2FT N	CL 1081D
LANCASTR (1975)	2458.985	RD MON IN WELL 13FT E PP NO 918598E 30FT N C/L AVE J & 66FT W C/L 120TH ST E (PROP) 2IN IP WITNESS 3FT UP 2FT N	CL 1082D
LANCASTR (1975)	2457.373	RD MON IN WELL W/COVER 5FT W PP NO 1048308E 30FT N C/L AVE J & 195FT E C/L 120TH ST E (PROP) 2IN IP WITNESS 3FT UP 2FT N	CL 1083D
LANCASTR (1975)	2462.102	RD MON IN WELL W/COVER 7FT E PP NO 1048301E 30FT N C/L AVE J & 180FT W C/L 125TH ST E 2IN IP WITNESS 3FT UP 2FT N	CL 1084A
LANCASTR (1975)	2462.984	RD MON IN WELL W/COVER 7FT W PP NO 1014867E 30FT N C/L AVE J & 145FT E C/L 125TH ST E 2IN IP MKR 3FT UP 2FT N	CL 1085
LANCASTR (1975)	2465.734	CS MON IN WELL @ C/L INT AVE J & 130TH ST E MKD (CO SURV 13 14 23 24 T7N R10W RE 2177) 18IN DN	CL 1087
LANCASTR (1975)	2473.516	CS MON IN WELL @ C/L INT AVE J & 135TH ST E MKD (1/4 COR 13 24 T7N R10W)	CL 1088
LANCASTR (1975)	2477.182	RD MON IN WELL W/COVER 5FT NE PP NO 1014874E 35FT N C/L AVE J & 360FT E 135TH ST E 2IN IP WITNESS 3FT UP 2FT N	CL 1089

QUAD-YEAR	ELEV	DESCRIPTION (INCLUDE QUAD AND YEAR IN DESCRIPTION)	BM NUMBER
LANCASTR (1975)	2484.203	CS MON IN WELL @ C/L INT AVE J & 140TH ST E MKD (13 24 18 19 T7N R10W R9W)	CL 1090
LANCASTR (1975)	2487.133	CSBM MON 6IN UP ON NW COR AVE J & 140TH ST E 90F N & 35FT W C/L INT MKD (BM 106-102 1959)	CL 1091
LANCASTR (1975)	2488.476	CSBM MON 6IN UP 39FT S C/L AVE J NR C/L 145TH ST E 57FT S PP 390499E MKD (BM 106-101 1959)	CL 1092
LANCASTR (1975)	2490.682	CSBM MON 6IN UP ON SE COR AVE J & 150TH ST E 18F E & 39FT S C/L INT (MKD BM 106-100 1959)	CL 1093
LANCASTR (1975)	2503.652	CSBM MON 2IN DN 19FT E C/L 150TH ST E @ DIRT RD 0.5MI N AVE K 4FT E PP 951510E MKD (BM 106-99 1959)	CL 1094
LANCASTR (1975)	2516.331	L&T SE COR OF 3FT SQ CONC SLAB 52FT W C/L 150TH ST E & 140FT N C/L AVE K	CL 1095
LANCASTR (1975)	2529.502	RDBM MON IN WELL 100FT N & 35FT E C/L INT 150TH ST E & AVE K-8 MKD (1960)	CL 1096
LANCASTR (1975)	2530.862	RDBM MON IN WELL 100FT S & 35FT E C/L INT 150TH ST E & AVE K-8 MKD (1960)	CL 1097
LANCASTR (1975)	2548.098	RDBM MON IN WELL 35FT E/O & 100FT N/O C/L INT 150TH ST E & AVE L MKD (1960)	CL 1098
LANCASTR (1975)	2547.170	CS MON IN WELL 20IN DN C/L INT 150TH ST E & AVE L MKD (CO SURV 29 30 31 32 T7N R9W 1927)	CL 1099
LANCASTR (1975)	2560.692	CS MON IN WELL 8IN DN @ C/L INT 150TH ST E & AVE L-8 MKD (1/4 COR 31 32 T7N R9W RE 5869)	CL 1101
BASELINE (1973)	2575.335	CS MON IN WELL 8IN DN @ C/L INT AVE M & 150TH ST E MKD (SEC COR 31 32 5 6 T6N T7N R9W)	CL 1102
BASELINE (1973)	2576.019	RDBM MON IN WELL 193FT S & 28FT E C/L INT AVE M & 150TH ST E MKD (1960)	CL 1103
BASELINE (1973)	2587.119	L&T IN CONC DRWY @ GATE TO FARM HSE 50FT N C/L AVE M-8 (DIRT RD) & 360FT E C/L 150TH ST E 1FT E/O W END OF CONC	CL 1105
BASELINE (1973)	2602.819	RDBM MON IN WELL W/COVER 5FT NE PP NO X1181E 25FT E C/L 150TH ST E & 270FT N AVE N (DIRT RD) 2IN IP WITNESS 3FT UP 2FT E	CL 1106
BASELINE (1973)	2614.562	RDBM MON IN WELL W/COVER 5FT SE PP NO 799849E 25FT E C/L 150TH ST E & 175FT N C/L AVE N-8 (UNIMPROVED) 2IN IP WITNESS 3FT UP 2FT E	CL 1108

QUAD-YEAR	ELEV	DESCRIPTION (INCLUDE QUAD AND YEAR IN DESCRIPTION)	BM NUMBER
BASELINE (1973)	2647.844	L&T IN CONC STANDPIPE 35FT N C/L AVE D & 17FT W C/L 145TH ST E	CL 1111
LANCASTR (1975)	2469.636	CS MON IN WELL 12IN DN @ C/L INT 140TH ST E & PROP AVE I-8 105FT S PP 1014890E MKD (1/4 COR 13 18 R9W T7N)	CL 1141
LANCASTR (1975)	2468.912	CSBM MON 6IN UP 32FT W C/L 140TH ST E & 690FT N AVE I-8 4FT S PP 1014882E MKD (BM 106-103 1959)	CL 1142
LANCASTR (1975)	2459.133	CS MON IN WELL 21IN DN @ C/L INT 140TH ST E & FUT AVE I MKD (SEC COR 12 13 17 18 R10W T7N) USE W EDGE	CL 1143
LANCASTR (1975)	2449.479	CS MON IN WELL 9IN DN @ C/L INT 140TH ST E & AVE H-8 225FT S OF S SIDE PROD HSE 45615 MKD (1/4 COR 12 7 R10W R9W T7N)	CL 1144
LANCASTR (1975)	2441.892	CSBM MON 6IN UP @ NW COR 140TH ST E & AVE H 33FT W & 68FT N C/L INT MKD (BM 106-106 1959)	CL 1145
LANCASTR (1975)	2440.410	CS MON IN WELL 20IN DN @ C/L INT 140TH ST E & AVE H MKD (SEC COR 1 6 12 7 R10W R9W T7N)	CL 1146
LANCASTR (1975)	2449.129	CS MON IN WELL 21IN DN ON C/L 140TH ST E 10FT S C/L AVE G-8 65FT SE PP 767477E & 80FT SW PP 878100E MKD (1/4 COR 1 6 R10W R9W T7N)	CL 1147
LANCASTR (1975)	2451.398	CSBM MON 4IN DN ON NW COR 140TH ST E & AVE G 60FT W & 32FT N C/L INT MKD (BM 106-108 1959)	CL 1148
LANCASTR (1975)	2450.657	CS MON IN WELL 24IN DN @ C/L INT 140TH ST E & AVE G MKD (SEC COR 36 31 1 6 T7N T8N R9W R10W)	CL 1149
LANCASTR (1975)	2460.569	CSBM MON 6IN UP 49FT E C/L 140TH ST E & 31FT N C/L FUT AVE F MKD (BM 106-110 1959)	CL 1151
LANCASTR (1975)	2458.107	CS MON IN WELL 10IN DN @ C/L INT 140TH ST E & FUT AVE F 71FT NW 2IN IP & PLUG 6IN UP MKD (SEC COR 25 30 31 36 R10W R9W T8N)	CL 1152
LANCASTR (1975)	2424.212	CS MON IN WELL 6IN DN @ C/L INT 140TH ST E & AVE E MKD (CO SURV 19 24 25 30 R10W R9W T8N) USE S EDGE	CL 1155
LANCASTR (1975)	2371.877	CSBM MON FL 45FT S C/L INT AVE E & 135TH ST E MKD (BM 106-113 1959)	CL 1156
LANCASTR (1975)	2367.437	CSBM MON FL 29FT S & 36FT W C/L INT AVE E & 130TH ST E MKD (BM 106-114 1959)	CL 1157D

QUAD-YEAR	ELEV	DESCRIPTION (INCLUDE QUAD AND YEAR IN DESCRIPTION)	BM NUMBER
LANCASTR (1975)	2357.147	CSBM MON 16IN DN 25FT N & 196FT W C/L INT AVE E & 120TH ST E MKD (106-116 1959)	CL 1159D
LANCASTR (1975)	2361.340	CSBM MON 6IN UP 28FT N C/L AVE E & 259FT W C/L 115TH ST E 51FT E CTR DIRT RD TO HSE 11337 MKD (BM 106-117 1959)	CL 1160D
LANCASTR (1975)	2356.039	CSBM MON DN 6IN 24FT N & 3FT E/O C/L INT AVE E & 110TH ST E MKD (BM 106-118 1959)	CL 1161D
LANCASTR (1975)	2348.609	CSBM MON 6IN UP 48FT N & 22FT E C/L INT AVE E & 100TH ST E MKD (BM)106-120 1959)	CL 1163D
LANCASTR (1975)	2342.779	CSBM MON 2IN UP 21FT S & 247FT W C/L INT AVE E & 95TH ST E MKD (BM 106-121 1959)	CL 1164D
LANCASTR (1975)	2341.869	CSBM MON 6IN UP 46FT S & 32FT E C/L INT AVE E & 90TH ST E MKD (BM 106-122 1959)	CL 1165D
LANCASTR (1975)	2346.695	RDBM TAG IN CONC FTG FLUSH 50FT S & 53FT E/O C/L INT 90TH ST E & AVE E-8	CL 1167D
LANCASTR (1975)	2355.365	CSBM MON 2IN UP 30FT N & 77FT E C/L INT AVE F & 90TH ST E MKD (BM 116-6 1961)	CL 1168D
LANCASTR (1975)	2364.858	CSBM MON 3IN UP 80FT N & 30FT E C/L INT 90TH ST E & AVE F-8 MKD (BM 116-5 1961)	CL 1169D
LANCASTR (1975)	2374.372	CSBM MON 2IN UP 27FT W C/L 90TH ST E & 70FT S C/L AVE G MKD (BM 116-4 1961)	CL 1170D
LANCASTR (1975)	2383.413	CSBM MON 4IN UP 20FT S & 80FT E C/L INT 90TH ST E & AVE G-8 MKD (BM 116-3 1961)	CL 1171D
LANCASTR (1975)	2394.595	CSBM MON FL 35FT N & 115FT E C/L INT 90TH ST E & AVE H MKD (BM 116-2 1961)	CL 1172D
LANCASTR (1975)	2402.147	CSBM MON FL 155FT N & 30FT E/O C/L INT 90TH ST E & FUT AVE H-8 MKD(116-1 1961)	CL 1173D
LANCASTR (1975)	2412.927	CSBM MON FL 30FT S & 68FT W C/L INT 90TH ST E & AVE I MKD (BM 107-26 1961)	CL 1174D
LANCASTR (1975)	2423.595	CSBM MON 2IN UP 550FT N & 35FT E C/L INT 90TH ST E & AVE I-8 MKD (BM 107-25 1961)	CL 1175D
LANCASTR (1975)	2455.530	CSBM MON 4IN UP 29FT S & 90FT W C/L INT 90TH ST E & AVE J-8 MKD (BM 107-23 1961)	CL 1177D
LANCASTR (1975)	2475.116	CSBM MON FL 60FT S & 27FT W C/L INT 90TH ST E & AVE K MKD (BM 107-22 1961)	CL 1178

10/31/79

LOS ANGELES COUNTY ROAD DEPARTMENT
SURVEY SECTION

PAGE 7

QUAD-YEAR	ELEV	DESCRIPTION (INCLUDE QUAD AND YEAR IN DESCRIPTION)	BM NUMBER
LANCASTR (1975)	2490.246	CSBM MON 3IN UP 45FT S & 33FT E C/L INT 90TH ST E & AVE K-8 MKD (BM107-21 1961)	CL 1179
LANCASTR (1975)	2498.052	CSBM MON FL 30FT S & 60FT W C/L INT 90TH ST E & AVE L MKD (BM 107-20 1961)	CL 1180
LANCASTR (1975)	2513.247	CSBM MON FL 35FT N & 34FT E C/L INT 90TH ST E & AVE L-8 MKD (BM 107-19 1961)	CL 1181
BASELINE (1973)	2525.992	CSBM MON 4IN UP 36FT N C/L AVE M & 36FT E C/L 90TH ST E MKD (BM 107-18 1961)	CL 1182
BASELINE (1973)	2536.604	CSBM MON 4IN UP ON NE COR 90TH ST E & AVE M-8 40FT N & 38FT E C/L INT MKD (BM 107-17 1961)	CL 1183
BASELINE (1973)	2554.780	CSBM MON 4IN UP 40FT S C/L AVE N & 30FT W C/L 90TH ST E MKD (BM 107-16 1961)	CL 1184
BASELINE (1973)	2560.529	CSBM MON 6IN UP 25FT S C/L AVE N-8 & 60FT E C/L 90TH ST E MKD (BM 107-15 1961)	CL 1185
BASELINE (1973)	2577.099	CSBM MON 6IN UP ON NE COR 90TH ST E & AVE O 237FT N & 37FT E C/L INT MKD (BM 107-14 1961)	CL 1186
LANCASTR (1975)	2530.015	CS MON IN WELL 26IN DN @ C/L INT AVE M & 95TH ST E MKD (CO SURV 1/4 SEC COR 32 5 T6N T7N R10W	CL 2036
LANCASTR (1975)	2532.876	CSBM MON 4IN UP 38FT S & 89FT E C/L INT AVE M & 95TH ST E MKD (BM 122-1 1961)	CL 2037
LANCASTR (1975)	2539.164	CS MON 8IN DN IN WELL @ C/L INT AVE M & 100TH ST E MKD (CO SURV 32 33 5 4 T6N T7N R10W 1925)	CL 2038
LANCASTR (1975)	2541.320	CSBM MON 4IN UP @ SE COR AVE M & 100TH ST E 26FT S & 75FT E C/L INT MKD (BM 122-2 1961) 2IN IP MKR 3FT UP 2FT N	CL 2039
LANCASTR (1975)	2546.970	CSBM MON 4IN UP @ SE COR AVE M & 105TH ST E 66FT E & 28FT S C/L INT MKD (BM 122-3 1961) 2IN IP MKR 3FT UP 2FT N	CL 2040
LANCASTR (1975)	2549.880	CSBM MON FL 48FT S & 52FT E C/L INT 110TH ST E & AVE M MKD (BM 122-4 1961)	CL 2041
LANCASTR (1975)	2546.516	CS MON 7IN UP @ C/L INT AVE M & 120TH ST E MKD (CO SURV 34 35 3 2 T6N T7N R10W) 2IN IP MARKER 3FT UP 2FT S	CL 2043
LANCASTR (1975)	2537.631	CS MON 12IN UP @ C/L INT AVE M & 125TH ST E MKD (CO SURV 1/4 SEC COR 2 35 T6N T7N R10W)	CL 2044

QUAD-YEAR	ELEV	DESCRIPTION (INCLUDE QUAD AND YEAR IN DESCRIPTION)	BM NUMBER
LANCASTR (1975)	2537.774	CS MON 2IN UP @ C/L INT AVE M & 130TH ST E MKD CO SURV 36 35 2 1 T6N T7N R10W)	CL 2045
LANCASTR (1975)	2551.754	CS MON 3IN UP @ C/L INT AVE M & 135TH ST E MKD (CO SURV 1/4 SEC COR 36 1 T6N T7N R10W)	CL 2046
LANCASTR (1975)	2654.963	CS MON 15IN UP @ C/L INT AVE M & 140TH ST E MKD (CO SURV 1 6 31 36 T6N T7N R10W R9W)	CL 2047
LANCASTR (1975)	2688.722	2IN IP WITH CUT SPK IN CONC 6IN UP @ 1/4 COR 31 6 R9W T6N T7N (FUT C/L INT AVE M & 145TH ST E)	CL 2048
BASELINE (1973)	2575.606	CSBM MON 2IN DN ON NE COR AVE M & 150TH ST E 53FT N & 33FT E C/L INT MKD (BM 115-11 1961)	CL 2049
BASELINE (1973)	2575.643	CS MON IN WELL @ C/L INT AVE M & FUT 155TH ST E MKD (1/4 SEC COR 32 5 T6N T7N R9W)	CL 2050
BASELINE (1973)	2579.269	2IN IP CONC PLUG & NAIL 8IN UP ON NE COR AVE M & FUT 155TH ST E 50FT N & 50FT E C/L INT CHIZ X ON E EDGE	CL 2051
BASELINE (1973)	2576.988	2IN IP CONC PLUG & NAIL 8IN UP ON SW COR AVE M & FUT 160TH ST E 50FT S & 50FT W C/L INT CHIZ X ON W EDGE	CL 2052
BASELINE (1973)	2577.055	2IN IP CONC PLUG & NAIL 8IN UP ON NE COR AVE M & FUT 160TH ST E 50FT N & 50FT E C/L INT	CL 2053
BASELINE (1973)	2577.769	2IN IP CONC PLUG & NAIL FLUSH ON SW COR AVE M & FUT 165TH ST E 50FT S & 50FT W C/L INT	CL 2054
BASELINE (1973)	2578.007	2IN IP CONC PLUG & NAIL 6IN UP ON NE COR AVE M & FUT 165TH ST E 50FT N & 50FT E C/L INT	CL 2055
LANCASTR (1975)	2561.168	CS MON IN WELL 18IN DN @ C/L INT 170TH ST E & AVE K-8 MKD (CO SURV 1/4 SEC COR 27 28 R9W T7N)	CL 2109
LANCASTR (1975)	2531.176	CSBM MON IN WELL 14IN DN 17FT S & 33FT E C/L INT 150TH ST E & AVE K-8 MKD (BM 115-14 1961) 2IN IP MKR 3FT UP 2FT E	CL 2110
LANCASTR (1975)	2488.864	CS MON IN WELL 8IN DN @ C/L INT AVE J & 150TH ST E MKD (CO SURV 17 18 19 20 R9W T7N) USE NE EDGE	CL 2160
LANCASTR (1975)	2489.013	CS MON IN WELL 6IN DN @ C/L INT AVE J & FUT 145TH ST E MKD (1/4 COR 18 19 R9W T7N)	CL 2161
LANCASTR (1975)	2451.717	2IN IP 6IN UP ON C/L PROD AVE G-8 50FT E C/L 140TH ST E P M ON N EDGE	CL 2162

QUAD-YEAR	ELEV	DESCRIPTION (INCLUDE QUAD AND YEAR IN DESCRIPTION)	BM NUMBER
LANCASTR (1975)	2455.293	2IN IP 6IN UP @ SW COR 140TH ST E & FUT AVE F-8 25FT S & 50FT W C/L INT	CL 2163
LANCASTR (1975)	2461.626	2IN IP 6IN UP W/CONC PLUG & NAIL 50FT N & 50FT E C/L INT 140TH ST E & AVE E-8 (CHIZ X ON N EDGE)	CL 2164
LANCASTR (1975)	2341.410	L&T S END GAS PUMP ISL @ NE COR 90TH ST E & AVE E 75FT N & 80FT E C/L INT	CL 2165D
LANCASTR (1975)	2346.758	CS MON FLUSH ON SW COR 90TH ST E & AVE E-8 56FT S & 27FT W C/L INT MKD (BM 116-7 1961)	CL 2166D
LANCASTR (1975)	2382.857	CS MON IN WELL 11IN DN @ C/L INT 90TH ST E & AVE G-8 MKD (1/4 SEC COR 5 6 R10W T7N RE 5869) USE N EDGE	CL 2167D
LANCASTR (1975)	2400.678	CS MON IN WELL 9IN DN @ C/L INT 90TH ST E & FUT AVE H-8 MKD (1/4 COR 7 8 T7N R10W RE 5869) USE W EDGE	CL 2168D
LANCASTR (1975)	2446.066	2IN IP & CS TAG 4IN UP @ NW COR AVE J & 95TH ST E 40FT N & 40FT W/O C/L INT E EDGE	CL 2169D
LANCASTR (1975)	2488.600	CS MON (S EDGE) IN WELL 8IN DN @ C/L INT 90TH ST ST E & AVE K-8 MKD (CO SURV 1/4 SEC COR 29 30 R10W T7N)	CL 2189
LANCASTR (1975)	2511.836	CS MON IN WELL 11IN DN @ C/L INT 90TH ST E & FUT AVE L-8 MKD (CO CURV 1/4 31 32 R10W T7N)	CL 2190
LANCASTR (1975)	2432.926	2IN IP & BOLT IN WELL 15IN DN @ C/L INT AVE H & 135TH ST E	CL 2337
LANCASTR (1975)	2434.006	2IN IP W/SHELL CASE 4IN UP ON C/L 135TH ST E 40FT N/O C/L AVE H USE N EDGE	CL 2338A
LANCASTR (1975)	2430.716	L&T W SIDE STANDPIPE @ NE COR AVE H & 130TH ST E 62FT N & 82FT E C/L INT	CL 2339D
LANCASTR (1975)	2426.648	CS MON IN WELL 12 IN DN @ C/L INT AVE H & 130TH ST E MKD (CO SURV SEC COR 1 2 12 11 R10W T7N) USE E EDGE	CL 2340D
LANCASTR (1975)	2429.004	2IN IP CONC PLUG & CS TAG @ SE COR AVE H & 125TH ST E 40FT E & 40FT S C/L INT	CL 2341D
LANCASTR (1975)	2425.480	CS MON IN WELL 6IN DN @ C/L INT AVE H & 125TH ST E MKD (1/4 COR 2 11 R10W T7N RE 5869) USE N EDGE	CL 2342D
LANCASTR (1975)	2418.013	2IN IP CONC PL & N 4IN UP @ SE COR AVE H & 120TH ST E 50FT S & 50FT E C/L INT USE NW EDGE	CL 2343D

QUAD-YEAR	ELEV	DESCRIPTION (INCLUDE QUAD AND YEAR IN DESCRIPTION)	BM NUMBER
LANCASTR (1975)	2416.698	CS MON IN WELL 18IN DN @ C/L INT AVE H & 120TH ST E MKD (CO SURV 3 2 10 11 R10W T7N) USE N EDGE	CL 2344D
LANCASTR (1975)	2415.589	2IN IP CONC PLUG & NAIL (S EDGE) 9IN UP @ SE COR 115TH ST E & AVE H 40FT S & 40FT E C/L INT	CL 2345D
LANCASTR (1975)	2412.970	CS MON (N EDGE) IN WELL 18IN DN @ C/L INT 115TH ST E & AVE H MKD (1/4 COR 3 10 R10W T7N)	CL 2346D
LANCASTR (1975)	2411.277	CS MON IN WELL 6IN DN @ C/L INT 110TH ST E & AVE H MKD (CO SURV 4 3 9 10 R10W T7N) USE E EDGE	CL 2347D
LANCASTR (1975)	2412.641	2IN IP CONC PLUG & NAIL (SE EDGE) 6IN UP @ NW COR AVE H & 110TH ST E 39FT N & 40FT W C/L INT	CL 2348D
LANCASTR (1975)	2397.356	CS MON IN WELL 12IN DN @ C/L INT AVE H & 100TH ST E MKD (5 4 8 9 R10W T7N) USE E EDGE	CL 2350D
LANCASTR (1975)	2395.316	CS MON IN WELL 8IN DN @ C/L INT AVE H & FUT 95TH ST E MKD (1/4 COR 5 8 T7N R10W) USE E EDGE	CL 2351D
LANCASTR (1975)	2374.669	2IN IP CONC PL & CS TAG 8IN UP 50FT N & 50FT E C/L INT 120TH ST E & AVE E-8	CL 2352D
LANCASTR (1975)	2374.095	CS MON IN WELL 8IN DN @ C/L INT 120TH ST E & FUT AVE E-8 MKD (1/4 COR 26 27 R10W T8N RE 5869) USE E EDGE	CL 2353D
LANCASTR (1975)	2380.776	2IN IP CONC PL & CS TAG 8IN UP 50FT S & 50FT E C/L INT 120TH ST E & AVE F (USE X ON NE EDGE)	CL 2355D
LANCASTR (1975)	2390.151	CS MON IN WELL 15IN DN @ C/L INT 120TH ST E & FUT AVE F-8 MKD (1/4 SEC COR 34 35 T8N R10W RE 62) USE E EDGE	CL 2356D
LANCASTR (1975)	2392.070	2IN IP & CS TAG 10IN UP 50FT S & 50FT W C/L INT 120TH ST E & AVE F-8 CHIS X ON NE EDGE	CL 2357D
LANCASTR (1975)	2397.788	CS MON IN WELL 30IN DN @ C/L INT 120TH ST E & FUT AVE G MKD (SEC COR 34 35 3 2 R10W T7N T8N)	CL 2358
LANCASTR (1975)	2407.056	CS MON IN WELL 30IN DN @ C/L INT 120TH ST E & FUT AVE G-8 MKD (1/4 COR 3 2 R10W T7N) USE W EDGE	CL 2359
LANCASTR (1975)	2409.266	2IN IP CONC PL & N 10IN UP 40FT S & 40FT E C/L INT 120TH ST E & AVE G-8 USE E EDGE	CL 2360D
LANCASTR (1975)	2521.252	CSBM MON NW COR CONC WATER VALVE VAULT 55FT E & 30FT S C/L INT AVE G & 145TH ST E MKD (BM 124-1 1966)	CL 2380

QUAD-YEAR	ELEV	DESCRIPTION (INCLUDE QUAD AND YEAR IN DESCRIPTION)	BM NUMBER
LANCASTR (1975)	2594.164	CS MON (E EDGE) IN WELL 18IN DN @ C/L INT AVE G & 150TH ST E MKD (31 32 6 5 T7N T8N R9W)	CL 2381
LANCASTR (1975)	2597.953	RDBM TAG NW COR CONC WATER VALVE VAULT 31FT S & 77FT E C/L INT AVE G & 150TH ST E	CL 2382
LANCASTR (1975)	2672.607	CSBM MON FL 31FT N & 60FT E C/L INT AVE G & 155TH ST E MKD (BM 124-3 1966)	CL 2384
LANCASTR (1975)	2743.101	CS MON (E EDGE) IN WELL @ C/L INT AVE G & 160TH ST E MKD (SEC COR 32 33 5 4 R9W T8N T7N)	CL 2385
LANCASTR (1975)	2747.218	RDBM TAG CONC BASE FIRE HYD 32FT S & 81FT E C/L INT AVE G & 160TH ST E	CL 2386
LANCASTR (1975)	2849.407	BOLT IN WELL 19IN DN @ C/L INT AVE G & 165TH ST E	CL 2387
LANCASTR (1975)	2855.732	CSBM MON FLUSH @ NE COR AVE G & 165TH ST E 134FT E & 29FT N C/L INT MKD (BM 124-5 1966)	CL 2388
LANCASTR (1975)	2932.189	CS MON (E EDGE) IN WELL 22IN DN @ C/L INT AVE G & 170TH ST E MKD (SEC COR 33 34 4 3 T7N T8N R9W)	CL 2389
LANCASTR (1975)	2935.428	RDBM TAG IN NW COR CONC BASE OF VALVE VAULT @ SE COR AVE G & 170TH ST E 80FT E & 30FT S C/L INT	CL 2390
LANCASTR (1975)	2973.578	CS MON IN WELL 6IN DN @ C/L INT AVE G & 175TH ST E MKD (1/4 COR 34 3 R9W T8N T7N)	CL 2391
LANCASTR (1975)	2974.874	RDBM TAG NW COR CONC BASE OF FIRE HYD @ SE COR AVE G & 175TH ST E 60FT E & 33FT S C/L INT	CL 2392
LANCASTR (1975)	3047.928	CS MON (S EDGE) IN WELL 14IN DN @ C/L INT AVE G & 180TH ST E MKD (SEC COR 34 35 3 2 R9W T8N T7N)	CL 2393
LANCASTR (1975)	3052.418	RDBM TAG NW COR CONC BASE OF FIRE HYD @ SE COR AVE G & 180TH ST E 80FT E & 32FT S C/L INT	CL 2394
LANCASTR (1975)	3088.095	CS MON (N EDGE) IN WELL 17IN DN @ C/L INT AVE G & 185TH ST E MKD (1/4 COR 35 2 R9W T8N T7N)	CL 2395
LANCASTR (1975)	3090.154	RDBM TAG NW COR CONC BASE OF FIRE HYD @ SE COR AVE G & 185TH ST E 58FT E & 32FT S C/L INT	CL 2396
LANCASTR (1975)	3126.725	CS MON (NE EDGE) IN WELL 18IN DN @ C/L INT AVE G & 190TH ST E MKD (35 36 2 1 T8N T7N R9W)	CL 2397
LANCASTR (1975)	3125.965	2IN IP CONC PLUG & CS TAG (S EDGE) 4IN UP @ NE COR AVE G & 190TH ST E 50FT N & 50FT E C/L INT	CL 2398

QUAD-YEAR	ELEV	DESCRIPTION (INCLUDE QUAD AND YEAR IN DESCRIPTION)	BM NUMBER
LANCASTR (1975)	3072.198	CS MON (E EDGE) IN WELL 19IN DN @ C/L INT AVE G & 195TH ST E MKD (1/4 COR 36 1 T7N T8N R9W)	CL 2399
LANCASTR (1975)	3074.108	2IN IP CONC PLUG & CS TAG 8IN UP @ SW COR AVE G & 195TH ST E 50FT S & 50FT W C/L INT	CL 2400
LANCASTR (1975)	3043.867	CS MON (N EDGE) IN WELL 18IN DN @ C/L INT AVE G & 200TH ST E MKD (SEC COR 36 31 1 6 T7N T8N R8W R9W)	CL 2401
LANCASTR (1975)	3047.236	2IN IP CONC PLUG & BRAD 4IN UP @ SW COR AVE G & 200TH ST E 50FT S & 50FT W C/L INT USE E EDG	CL 2402
LANCASTR (1975)	3030.648	CS MON (SW EDGE) IN WELL 6IN DN @ C/L INT 200TH ST E & AVE G-8 MKD (1/4 COR 1 6 T7N R8W R9W)	CL 2403
LANCASTR (1975)	3028.318	2IN IP (S EDGE) 3IN UP @ SW COR 200TH ST E & AVE G-8 50FT S & 50FT W C/L INT	CL 2404
LANCASTR (1975)	2994.900	CS MON (S EDGE) IN WELL 8IN DN @ C/L INT 200TH ST E & AVE H MKD (SEC COR 1 6 12 7 R8W R9W T7N)	CL 2405
LANCASTR (1975)	2996.639	1 1/2IN IP CONC PLUG & NAIL @ SW COR 200TH ST E & AVE H 50FT S & 50FT W C/L INT	CL 2406
LANCASTR (1975)	2970.992	CS MON (S EDGE) IN WELL 10IN DN @ C/L INT 200TH ST E & AVE H-8 MKD (1/4 COR 12 7 T7N R9W R8W)	CL 2407
LANCASTR (1975)	2981.906	CS MON (S EDGE) IN WELL 15IN DN @ C/L INT 200TH ST E & AVE I MKD (SEC COR 12 7 13 18 T7N R8W R9W)	CL 2409
LANCASTR (1975)	2984.755	CS MON 6IN UP @ SW COR 200TH ST E & AVE I 40FT W & 40FT S C/L INT MKD (RPC 1)	CL 2410
LANCASTR (1975)	2958.434	CS MON (S EDGE) IN WELL 8IN DN @ C/L INT AVE H & 195TH ST E PROP MKD (1/4 COR 12 13 T7N R9W)	CL 2411
LANCASTR (1975)	2964.618	CS MON 5IN UP ON C/L 195TH ST E 40FT S C/L AVE I MKD (RPC 3)	CL 2412
LANCASTR (1975)	2908.034	CS MON (S EDGE) IN WELL 12IN DN @ C/L INT AVE I & 190TH ST E MKD (SEC COR 11 12 13 14 R9W T7N)	CL 2413
LANCASTR (1975)	2909.331	CS MON @ SE COR AVE I & 190TH ST E 40FT E & 38FT S C/L INT MKD (RPC 5)	CL 2414
LANCASTR (1975)	2897.445	CS MON 6IN UP 37FT E C/L 190TH ST E & 0.25MI S AVE I MKD (BM RP BC)	CL 2415
LANCASTR (1975)	2907.244	CS MON (S EDGE) IN WELL 6IN DN @ C/L INT 190TH ST E & PROP AVE I-8 MKD (1/4 COR 14 13 T7N R9W)	CL 2416

QUAD-YEAR	ELEV	DESCRIPTION (INCLUDE QUAD AND YEAR IN DESCRIPTION)	BM NUMBER
LANCASTR (1975)	2909.758	CS MON 6IN UP DN C/L PROD AVE I-8 40FT E C/L 190TH ST E MKD (RPA 5)	CL 2417
LANCASTR (1975)	2963.064	CHIS X E EDGE 2IN IP WITH CONC PLUG & BRAD 6IN UP @ NE COR 190TH ST E & AVE J 40FT N & 40FT E C/L INT	CL 2418
LANCASTR (1975)	2964.445	CS MON 8IN DN @ C/L INT AVE J & 190TH ST E MKD (SEC COR 14 13 23 24 R9W T7N) USE W EDGE	CL 2419
LANCASTR (1975)	2964.744	CHIS X E SIDE 2IN IP WITH CONC PLUG & BRAD 6IN UP @ NW COR AVE J & 190TH ST E 40FT W & 40FT N C/L INT	CL 2420
LANCASTR (1975)	2887.114	CHIS X E EDGE 2IN IP WITH CONC PLUG & NAIL 3IN UP @ NE COR 185TH ST E & AVE J 40FT N & 40FT E C/L INT	CL 2421
LANCASTR (1975)	2883.625	CHIS X W EDGE 2IN IP WITH CONC PLUG & NAIL @ SW COR 185TH ST E & AVE J 40FT S & 40FT W C/L INT	CL 2423
LANCASTR (1975)	2761.627	CS MON (NW EDGE) IN WELL 8IN DN @ C/L INT 180TH ST E & AVE J MKD (SEC COR 15 14 22 23 R9W T7N)	CL 2424
LANCASTR (1975)	2757.676	CHIS X S EDGE 2IN IP WITH CONC PLUG & NAIL 6IN UP @ SW COR 180TH ST E & AVE J 40FT S & 40FT W C/L INT	CL 2425
LANCASTR (1975)	2741.370	CHIS X S EDGE 2IN IP WITH CONC PLUG & NAIL 12IN UP @ SE COR 175TH ST E & AVE J 40FT E & 40FT S C/L INT	CL 2426
LANCASTR (1975)	2739.249	CS MON (N EDGE) IN WELL 12IN DN @ C/L INT 175TH ST E & AVE J MKD (1/4 COR 15 22 T7N R9W)	CL 2427
LANCASTR (1975)	2680.530	CHIS X N EDGE 2IN IP WITH CONC PLUG & NAIL 12IN UP @ SE COR 170TH ST E & AVE J 40FT S & 40FT E C/L INT	CL 2428
LANCASTR (1975)	2677.443	CS MON (NW EDGE) IN WELL 24IN DN @ C/L INT 170TH ST E & AVE J MKD (15 16 21 22 R9W T7N)	CL 2429
LANCASTR (1975)	2577.790	CS MON (E EDGE) IN WELL 8IN DN @ C/L INT 165TH ST E & AVE J MKD (1/4 COR 16 21 R9W T7N)	CL 2431
LANCASTR (1975)	2511.735	CS MON (W EDGE) IN WELL 6IN DN @ C/L INT PROP 160TH ST E & AVE J MKD (SEC COR 16 17 20 21 R9W T7N)	CL 2432
LANCASTR (1975)	2511.858	SPK T&W IN 12IN CASING 4IN UP ON C/L PROD 160TH ST E FROM N 40FT S C/L AVE J	CL 2433

QUAD-YEAR	ELEV	DESCRIPTION (INCLUDE QUAD AND YEAR IN DESCRIPTION)	BM NUMBER
LANCASTR (1975)	2493.229	CS MON (N EDGE) IN WELL 6IN DN @ C/L INT AVE J & CL PROP 155TH ST E MKD (1/4 COR 17 20 T7N R9W)	2434
LANCASTR (1975)	3087.221	GENERAL LAND OFFICE MON 4IN DN @ C/L INT FUT AVE CL G-8 & 180TH ST E MKD (1/4 COR 2 3 1947)	2435
LANCASTR (1975)	3085.459	PM ON RIM 2IN IP WITH CS TAG 6IN UP ON SW COR CL FUT AVE G-8 & 180TH ST E 50FT S & 50FT W C/L INT	2436
LANCASTR (1975)	3029.870	GENERAL LAND OFFICE MON 1IN UP @ C/L INT FUT AVE CL H & 180TH ST E MKD (S3 S2 S10 S11 T7N R9W)	2437
LANCASTR (1975)	3033.040	2IN IP 4IN UP ON SW COR FUT AVE H & 180TH ST E CL 50FT S & 50FT W C/L INT USE N EDGE	2438
LANCASTR (1975)	2989.768	CS MON 8IN DN @ C/L INT FUT AVE H-8 & 180TH ST E CL MKD (1/4 COR 10 11 T7N R9W)	2439
LANCASTR (1975)	2993.948	PM&X SE QUAD 2IN IP 12IN UP ON C/L FUT AVE H+8 CL & 40FT E C/L 180TH ST E	2440
LANCASTR (1975)	2931.841	2IN IP & CS TAG 5IN UP ON SE COR FUT AVE I & CL 180TH ST E 50FT S & 50FT E C/L INT	2441
LANCASTR (1975)	2934.693	CHIS X IN BOLT ON FIRE HYD @ SW COR FUT AVE I & CL 180TH ST E 25FT S & 100FT W C/L INT	2442
LANCASTR (1975)	2897.049	CS MON 12IN DN @ C/L INT FUT AVE I & 185TH ST E CL MKD (1/4 COR 11 14 R9W T7N)	2443
LANCASTR (1975)	2897.176	2IN IP & CS TAG 6IN UP ON SE COR FUT AVE I & CL 185TH ST E 50FT S & 50FT E C/L INT	2444
BASELINE (1973)	2552.766	CS MON IN WELL 6IN DN @ C/L INT 90TH ST E & AVE CL N MKD (5 6 7 8 T6N R10W)	2608
BASELINE (1973)	2588.379	CSBM MON 6IN UP ON NE COR 150TH ST E & FUT AVE CL M-8 77FT N & 30FT E C/L INT MKD (BM 115-10 1961) 2IN IP 3FT UP 2FT N	2700
BASELINE (1973)	2604.630	CSBM MON 6IN UP ON NE COR AVE N & 150TH ST E CL 65FT N & 29FT E C/L INT MKD (BM 115-9 1961) 2IN IP 3FT UP 2FT W	2701
BASELINE (1973)	2616.459	CSBM MON 6IN UP ON NW COR 150TH ST E & FUT AVE CL N-8 188FT N & 33FT W C/L INT MKD (BM 115-8 1961) 2IN IP 3FT UP 2FT E	2702
BASELINE (1973)	2645.868	CSBM MON 6IN UP ON NE COR 150TH ST E & AVE O CL 79FT N & 34FT E C/L INT MKD (BM 115-7 1961) 2IN IP 3FT UP 2FT W	2703

QUAD-YEAR	ELEV	D E S C R I P T I O N (INCLUDE QUAD AND YEAR IN DESCRIPTION)	BM NUMBER
BASELINE (1973)	2648.133	CSBM MON 6IN UP ON SW COR AVE O & 145TH ST E 100FT S & 37FT W C/L INT MKD (BM 115-6 1961) 2IN IP 3FT UP 2FT E	CL 2704
LANCASTR (1975)	2945.637	CS MON (S EDGE) 36IN DN @ C/L INT 200TH ST E & LANCASTER BLVD MKD (1/4 COR 13 18 T7N R8W R9W)	CL 3170
LANCASTR (1975)	2945.445	CS MON 6IN UP ON C/L LANCASTER BLVD 98FT W C/L 200TH ST E MKD (BM RPA-1)	CL 3171
LANCASTR (1975)	2920.527	CSBM MON 30FT N C/L AVE J & 164FT E C/L 200TH ST E MKD (BM 124-18 1966)	CL 3172
LANCASTR (1975)	2922.858	CHIS X N EDGE 1-1/2IN IP @ SW COR 200TH ST E & AVE J 51FT S & 61FT W C/L INT	CL 3173
LANCASTR (1975)	2918.824	CHIS X E EDGE 1-1/2IN IP FLUSH @ SE COR AVE J & 195TH ST E 48FT E & 49FT S C/L INT	CL 3174
LANCASTR (1975)	2920.305	CHIS X NW EDGE 1-1/2IN IP 2IN UP @ NW COR AVE J & 195TH ST E 50FT W & 48FT N C/L INT	CL 3175
LANCASTR (1975)	2887.610	CS MON (N EDGE) 6IN UP @ C/L INT 200TH ST E & AVE J-8 MKD (1/4 COR 24 19 T7N R9W R8W)	CL 3176
LANCASTR (1975)	2889.189	2IN IP (E EDGE) 8IN UP @ SW COR 200TH ST E & AVE J-8 32FT S & 39FT W C/L INT	CL 3177
LANCASTR (1975)	2889.144	CS MON (N EDGE) 6IN UP @ C/L INT 200TH ST E & AVE K MKD (SEC COR 24 19 25 30 T7N R9W R8W)	CL 3178
LANCASTR (1975)	2884.627	2IN IP (E EDGE) 8IN UP @ SE COR 200TH ST E & AVE K 39FT S & 38FT E C/L INT	CL 3179
LANCASTR (1975)	2808.246	CSBM MON 2IN UP @ SW COR 200TH ST E & AVE K-8 38FT S & 31FT W C/L INT MKD (BM 124-22 1966)	CL 3181
LANCASTR (1975)	2746.557	2IN IP (N EDGE) 3IN UP @ NE COR 200TH ST E & FUT AVE L 35FT N & 40FT E C/L INT	CL 3182
LANCASTR (1975)	2744.039	CS MON (S EDGE) 12IN DN @ C/L INT 200TH ST E & FUT AVE L MKD (SEC COR 25 30 36 31 T7N R9W R8W)	CL 3183
LANCASTR (1975)	2714.422	NAIL IN 1-1/2IN IP 12IN DN @ C/L INT 200TH ST E & FUT AVE L-8	CL 3184
LANCASTR (1975)	2715.173	CSBM MON @ SW COR 200TH ST E & FUT AVE L-8 33FT S & 31FT W C/L INT MKD (BM 124-24 1966)	CL 3185
BASELINE (1973)	2678.263	CS MON (N EDGE) IN WELL 4IN DN @ C/L INT 200TH ST E & AVE M MKD (SEC COR 36 31 1 6 T7N T6N R9W R8W)	CL 3186

QUAD-YEAR	ELEV	DESCRIPTION (INCLUDE QUAD AND YEAR IN DESCRIPTION)	BM NUMBER
BASELINE (1973)	2679.305	2IN IP (S EDGE) WITH PLUG & CE TAG @ SW COR 200TH ST E & AVE M 46FT S & 51FT W C/L INT	CL 3187
BASELINE (1973)	2665.713	1-1/2IN IP (W EDGE) & NAIL 4IN DN @ C/L INT AVE M & FUT 195TH ST E	CL 3188
BASELINE (1973)	2665.883	CHIS X ON N EDGE 1-1/2IN IP WITH CE TAG 6IN UP ON C/L PROD FUT 195TH ST E 50FT S C/L AVE M	CL 3189
BASELINE (1973)	2650.420	CS MON 6IN DN @ C/L INT FUT AVE M & FUT 190TH ST E MKD (SEC COR 35 36 2 1 T6N T7N R9W)	CL 3190
BASELINE (1973)	2651.390	CHIS X ON W EDGE 2IN IP WITH CE TAG 6IN UP @ NW COR FUT AVE M & FUT 190TH ST E 50FT N & 50FT W C/L INT	CL 3191
BASELINE (1973)	2625.228	NAIL IN 2IN IP 6IN DN @ C/L INT FUT AVE M & FUT 185TH ST E	CL 3192
BASELINE (1973)	2628.784	CHIS X ON S EDGE 2IN IP WITH CE TAG 4IN UP ON C/L PROD FUT 185TH ST E 50FT S C/L FUT AVE M	CL 3193
BASELINE (1973)	2594.059	2IN IP (N EDGE) WITH CONC PLUG & CE TAG 6IN UP ON C/L FUT 175TH ST E 50FT S C/L AVE M	CL 3195
LANCASTR (1975)	2545.946	RDBM MON IN WELL @ NE COR AVE M & 105TH ST E 20FT N & 68FT E C/L INT 9FT E OF PP 390101E MKD (1968)	CL 3338
LANCASTR (1975)	2548.377	CHIS X ON S EDGE 2IN IP W/CS TAG 6IN UP ON NW COR AVE M & 110TH ST E 50FT N & 50FT W C/L INT	CL 3339
LANCASTR (1975)	2536.909	2IN IP & N 4IN UP @ NE COR AVE M & 130TH ST E 50FT N & 50FT E C/L INT USE W EDGE	CL 3340
LANCASTR (1975)	2552.806	2IN IP (W EDGE) 6IN UP 40FT S C/L FUT AVE M ON C/L FUT 135TH ST E	CL 3341
BASELINE (1973)	2585.674	PM ON E EDGE 2IN IP WITH CS TAG ON SE COR AVE M & 170TH ST E 50FT S & 50FT E C/L INT	CL 3342
LANCASTR (1975)	2454.512	CSBM MON 4IN UP ON SW COR 140TH ST E & FUT AVE F-8 118FT S & 50FT W C/L INT MKD (BM 106-109A 1966) 2IN IP 3FT UP 2FT E	CL 3343
LANCASTR (1975)	2972.094	1-1/2IN IP (S EDGE) & NAIL FLUSH ON SE COR 200TH ST E & AVE H-8 50FT S & 50FT E C/L INT	CL 3344
LANCASTR (1975)	2399.622	L&BN E EDGE CONC CISTERN @ NW COR AVE H & FUT 100TH ST E 70FT N & 51FT W C/L INT	CL 3345D

QUAD-YEAR	ELEV	DESCRIPTION (INCLUDE QUAD AND YEAR IN DESCRIPTION)	BM NUMBER
LANCASTR (1975)	2380.081	CS MON IN WELL 13IN DN @ C/L INT 120TH ST E & AVE F MKD (27 26 34 35 T8N R10W RE 5869) USE N EDGE	CL 3346D
LANCASTR (1975)	2417.381	L&BN IN SE COR CONC APRON @ E EDGE CONC SLAB 175FT N & 102FT W C/L INT 110TH ST E & AVE H-8 MKD (BM)	CL 3347D
LANCASTR (1975)	2416.957	CS MON IN WELL 14IN DN @ C/L INT 110TH ST E & AVE H-8 MKD (CO SURV 1/4 SEC COR 9 10 R10W T7N 1926)USE W EDGE	CL 3348D
LANCASTR (1975)	2432.203	CS MON IN WELL 8IN DN @ C/L INT AVE I & 110TH ST E MKD (CO SURV 9 10 15 16 R10W T7N 1926)USE NE EDGE	CL 3350D
LANCASTR (1975)	2441.705	1 1/2IN IP & BD 4IN UP 50FT N/O & 50FT W/O C/L INT AVE I-8 & 110TH ST E USE W EDGE	CL 3351D
LANCASTR (1975)	2439.851	CS MON IN WELL 12IN DN @ C/L INT I-8 & 110TH ST E MKD (CO SURV 1/4 SEC COR 1926 15 16 T7N R10W) USE N EDGE	CL 3352D
LANCASTR (1975)	2468.233	RDBM MON IN WELL 0.4 MI N C/L AVE K & 20FT E C/L 110TH ST E MKD (1968)22FT S/O PP 192429	CL 3353D
LANCASTR (1975)	2486.451	CSBM MON 4IN UP ON SW COR AVE K & 110TH ST E 25FT S & 145FT W C/L INT MKD (BM 122-8 1961)	CL 3354
LANCASTR (1975)	2499.210	CSBM MON FLUSH ON NE COR AVE K-8 & 110TH ST E 75FT N/O & 25FT E C/L INT MKD (BM 122-7 1961)	CL 3355
LANCASTR (1975)	2514.342	CSBM MON 6IN DN 61FT S & 48FT W C/L INT 110TH ST E & AVE L MKD (122-6 1961)	CL 3356
LANCASTR (1975)	2577.612	RDBM MON IN WELL @ NW COR 170TH ST E & AVE L 66FT N & 33FT W C/L INT MKD (1968)	CL 3359
LANCASTR (1975)	2586.800	CS MON (W EDGE) IN WELL 18IN DN @ C/L INT 170TH ST E & AVE K MKD (SEC COR 21 22 27 28 T7N R9W)	CL 3360
LANCASTR (1975)	2588.492	RDBM MON IN WELL ON NW COR 170TH ST E & AVE K 34FT W & 47FT N C/L INT 10FT SW PP 1061693E	CL 3361
LANCASTR (1975)	2624.030	CS MON (S EDGE) IN WELL 6IN DN @ C/L INT 170TH ST E & FUT AVE J-8 MKD (1/4 COR 21 22 T7N R9W)	CL 3362
LANCASTR (1975)	2625.001	X ON N EDGE I-1/2IN IP 2IN UP ON NE COR 170TH ST E & FUT AVE J-8 50FT N & 50FT E C/L INT	CL 3363

QUAD-YEAR	ELEV	DESCRIPTION (INCLUDE QUAD AND YEAR IN DESCRIPTION)	BM NUMBER
LANCASTR (1975)	2473.924	CS MON IN WELL 18IN DN @ C/L INT 130TH ST E & AVE J-8 MKD (CO SURV 1/4 COR 23 24 T7N R10W RE 329)	CL 3364
LANCASTR (1975)	2484.851	CS MON IN WELL 8IN DN @ C/L INT 130TH ST E & AVE K MKD (26 25 24 23 T7N R10W RE 5869) USE S EDGE	CL 3365
LANCASTR (1975)	2486.048	CSBM MON 4IN UP 133FT S & 30FT E C/L INT 130TH ST E & AVE K MKD (BM 122-12 1961)	CL 3366
LANCASTR (1975)	2507.829	2IN IP CONC PL & N 40FT S & 40FT W C/L INT 130TH ST E & AVE L	CL 3367
LANCASTR (1975)	2513.673	CS MON 12IN DN @ C/L INT 130TH ST E & AVE 1-8 MKD (CO SURV 1/4 COR 35 36 T7N R10W RE 63) 2IN MARKER 3FT UP 2FT E	CL 3368
LANCASTR (1975)	2515.497	2IN IP 8IN UP 40FT E C/L INT 130TH ST E & AVE L-8 CHIS X ON S EDGE	CL 3369
BASELINE (1973)	2698.918	1-1/2IN IP & NAIL 12IN DN @ C/L INT FUT AVE M & 205TH ST E	CL 3393
BASELINE (1973)	2700.118	2IN IP & CE TAG 6IN UP ON C/L 205TH ST E 50FT S C/L FUT AVE M	CL 3394
BASELINE (1973)	2718.528	2IN IP & CE TAG 8IN UP ON SW COR FUT AVE M & 210TH ST E 50FT S & 50FT W C/L INT	CL 3395
BASELINE (1973)	2717.169	CS MON 12IN DN @ C/L INT FUT AVE M & 210TH ST E MKD (SEC COR 31 32 6 5 T6N T7N R8W)	CL 3396
BASELINE (1973)	2732.101	2IN IP & CE TAG 8IN UP ON SW COR FUT AVE M & 215TH ST E 50FT S & 50FT W C/L INT	CL 3397
BASELINE (1973)	2731.609	NAIL IN 1-1/2IN IP 12IN DN @ C/L INT FUT AVE M & 215TH ST E	CL 3398
BASELINE (1973)	2753.297	CS MON 8IN DN @ C/L INT FUT AVE M & 220TH ST E MKD (SEC COR 32 33 5 4 T6N T7N R8W)	CL 3399
BASELINE (1973)	2754.821	CE TAG IN 2IN IP 6IN UP ON NE COR FUT AVE M & 220TH ST E 50FT N & 50FT E C/L INT	CL 3400
BASELINE (1973)	2772.689	NAIL IN 1-1/2IN IP 14IN DN @ C/L INT AVE M & FUT 225TH ST E	CL 3401
BASELINE (1973)	2773.806	CE TAG IN 2IN IP 6IN UP ON C/L FUT 225TH ST E 50FT S C/L AVE M	CL 3402

QUAD-YEAR	ELEV	DESCRIPTION (INCLUDE QUAD AND YEAR IN DESCRIPTION)	BM NUMBER
BASELINE (1973)	2792.566	CE TAG IN 2IN IP 8IN UP ON SW COR FUT AVE M & 230TH ST E 50FT S & 50FT W C/L INT	CL 3403
BASELINE (1973)	2791.682	CS MON 6IN DN @ C/L INT FUT AVE M & 230TH ST E MKD (SEC COR 33 34 3 4 T6N T7N R8W)	CL 3404
BASELINE (1973)	2828.940	CE TAG IN 2IN IP 10IN UP ON SW COR FUT AVE M & 235TH ST E 50FT S & 50FT W C/L INT	CL 3405
BASELINE (1973)	2827.237	CE TAG IN 2IN IP 8IN UP ON NE COR FUT AVE M & 235TH ST E 50FT N & 50FT E C/L INT	CL 3406
BASELINE (1973)	2846.628	2IN IP & CE TAG 6IN UP ON SW COR FUT AVE M & 240TH ST E 50FT S & 50FT W C/L INT	CL 3407
BASELINE (1973)	2845.494	CS MON 8IN DN @ C/L INT FUT AVE M & 240TH ST E MKD (SEC COR 2 3 34 35 T6N T7N R8W)	CL 3408
LANCASTR (1975)	3023.928	CS MON IN WELL 6IN DN @ C/L INT AVE G & 205TH ST E MKD (1/4 COR 31 6 T7N T8N R8W)	CL 3409
LANCASTR (1975)	3024.438	2IN IP 10IN UP ON NE COR AVE G & 205TH ST E 50FT N & 50FT E C/L INT	CL 3410
LANCASTR (1975)	3016.826	CSBM MON 4IN UP ON NW COR AVE G & 210TH ST E 42FT N & 140FT W C/L INT MKD (BM 124-30 1966) 2IN IP 3FT UP 2FT S	CL 3411
LANCASTR (1975)	3015.891	CS MON IN WELL 12IN DN @ C/L INT AVE G & 210TH ST E MKD (SEC COR 31 32 5 6 T7N T8N R8W)	CL 3412
LANCASTR (1975)	2970.829	CSBM MON 3IN UP ON NW COR AVE G & 215TH ST E 56FT N & 25FT W C/L INT MKD (BM 124-31 1966) 2IN IP 3FT UP 2FT S	CL 3413
LANCASTR (1975)	2971.370	CS MON IN WELL 8IN DN @ C/L INT AVE G & 215TH ST E MKD (1/4 COR 32 5 T7N T8N R8W)	CL 3414
LANCASTR (1975)	2985.783	CSBM MON 2IN UP ON NW COR AVE G & 220TH ST E 35FT N & 137FT W C/L INT MKD (BM 124-32 1966) 2IN IP 3FT UP 2FT S	CL 3415
LANCASTR (1975)	3025.364	PM ON W SIDE 2IN IP WITH CE TAG 4IN UP @ NE COR 230TH ST E & AVE G 50FT N & 50FT E C/L INT	CL 3418
LANCASTR (1975)	3036.094	CHIS X ON S EDGE 2IN IP WITH CE TAG 12IN UP ON SW COR AVE G & 235TH ST E 50FT S & 50FT W C/L INT	CL 3419
LANCASTR (1975)	3034.704	CS MON 19IN DN IN WELL @ C/L INT AVE G & 235TH ST E MKD (1/4 COR 34 3 R8W T7N T8N)	CL 3420

QUAD-YEAR	ELEV	DESCRIPTION (INCLUDE QUAD AND YEAR IN DESCRIPTION)	BM NUMBER
LANCASTR (1975)	3064.547	CHIS X S EDGE OF 2IN IP 4IN UP ON SW COR 240TH ST E & AVE G 50FT S & 50FT W C/L INT	CL 3421
LANCASTR (1975)	3064.202	CS MON IN WELL 8IN DN @ C/L INT AVE G & 240TH ST E MKD (SEC COR 34 35 3 2 T7N T8N R8W)	CL 3422
LANCASTR (1975)	3052.090	CHIS X ON S EDGE 2IN IP WITH CE TAG 10IN UP 50FT N C/L AVE G (DIRT) & 575FT W DRWY HSE 24505	CL 3423
LANCASTR (1975)	3050.357	CSBM MON IN BOULDER 87FT S C/L AVE G (DIRT) & 375FT W DRWY HSE 24505 MKD (BM 124-37 1966)	CL 3424
LANCASTR (1975)	2952.663	CHIS X ON NE EDGE 2IN IP WITH CE TAG 10IN UP ON SW COR 250TH ST E & AVE G 50FT S & 50FT W C/L INT	CL 3425
LANCASTR (1975)	2950.484	CS MON IN WELL 8IN DN @ C/L INT AVE G & 250TH ST E MKD (SEC COR 35 36 1 2 T7N T8N R8W)	CL 3426
LANCASTR (1975)	2963.443	CE TAG IN 2IN IP 10IN UP ON NW COR 250TH ST E & FUT AVE G-8 50FT N & 50FT W C/L INT	CL 3427
LANCASTR (1975)	2961.193	CS MON IN WELL 14IN DN @ C/L INT 250TH ST E & FUT AVE G-8 MKD (1/4 COR 1 2 T7N R8W)	CL 3428
LANCASTR (1975)	2967.399	CHIS X ON S SIDE 2IN IP WITH CE TAG FLUSH ON NW COR 250TH ST E & FUT AVE H 50FT N & 50FT W C/L INT	CL 3429
LANCASTR (1975)	2965.148	CS MON IN WELL 12IN DN @ C/L INT 250TH ST E & AVE H MKD (12 11 1 2 T7N R8W) 2IN IP 3FT UP 2FT W USE S EDGE	CL 3430
LANCASTR (1975)	2988.732	CS MON 14IN DN @ C/L INT 250TH ST E & FUT AVE H-8 16FT W & 8FT S C/L INT DIRT RDS MKD (1/4 COR 11 12 T7N R8W) 2IN IP 3FT UP 2FT E	CL 3431
LANCASTR (1975)	2991.662	CE TAG IN 2IN IP 12IN UP ON SW COR 250TH ST E & FUT AVE H-8 50FT S & 50FT W C/L INT	CL 3432
LANCASTR (1975)	3045.412	CSBM MON IN ROCK OUTCROP NR TOP HILL 130FT E C/L FUT 250TH ST E & 0.9MI S AVE H MKD (BM 124-42 1966) 2IN IP 4FT UP 7FT NE	CL 3433
LANCASTR (1975)	3026.781	CS MON 2IN DN @ C/L INT FUT 250TH ST E & FUT AVE I MKD (SEC COR 11 12 13 14 T7N R8W) 2IN IP 3FT UP 2FT N	CL 3434
LANCASTR (1975)	3041.235	CSBM MON IN ROCK FACE 151FT W C/L 250TH ST E (DIRT) & 0.25MI N AVE I-8 MKD (BM 124-44 1966) 2IN IP 4FT UP 4FT SW	CL 3436

QUAD-YEAR	ELEV	DESCRIPTION (INCLUDE QUAD AND YEAR IN DESCRIPTION)	BM NUMBER
LANCASTR (1975)	3037.459	CE TAG IN 1IN IP 2IN UP ON NE COR 250TH ST E & FUT AVE I-4 50FT N & 50FT E C/L INT	CL 3437
LANCASTR (1975)	3024.348	CS MON 24IN DN @ C/L INT 250TH ST E & FUT AVE I-8 9FT W C/L INT DIRT RDS MKD (1/4 COR 13 14 T7N R8W) 2IN IP 3FT UP 2FT NW USE S EDGE	CL 3438
LANCASTR (1975)	2980.659	CHIS X E EDGE OF 2IN IP WITH CE TAG 8IN UP ON NE COR AVE J & 250TH ST E 50FT N & 50FT E C/L INT	CL 3439
LANCASTR (1975)	2979.960	CSBM MON ON NW COR AVE J & 250TH ST E 35FT N & 24FT W C/L INT MKD (BM 124-46 1966) 2IN IP 3FT UP 2FT S	CL 3440
LANCASTR (1975)	2939.672	CHIS X N EDGE OF 2IN IP WITH CE TAG 6IN UP ON NW COR 245TH ST E & AVE J 50FT N & 50FT W C/L INT	CL 3441
LANCASTR (1975)	2938.510	CSBM MON ON SW COR AVE J & 245TH ST E 34FT S & 78FT W C/L INT MKD (BM 124-47 1966) 2IN IP 3FT UP 2FT N	CL 3442
LANCASTR (1975)	2922.817	CS MON 18IN DN @ C/L INT AVE J & 240TH ST E MKD (SEC COR 15 14 22 23 T7N R8W)	CL 3444
LANCASTR (1975)	2857.446	CS MON IN WELL 18IN DN @ C/L INT AVE K-8 & FUT 240TH ST E MKD (1/4 COR 26 27 T7N R8W) 2IN IP 3FT UP 2FT N	CL 3447
LANCASTR (1975)	2834.537	CS MON 12IN DN @ C/L INT 240TH ST E & FUT AVE L-8 MKD (1/4 COR 34 35 T7N R8W) 2IN IP 3FT UP 3FT N	CL 3449
LANCASTR (1975)	3074.357	RDBM TAG CONC COLLAR OF FIRE HYD ON SW COR 200TH ST E & AVE F-8 50FT S & 20FT W C/L INT	CL 3450
LANCASTR (1975)	3078.656	CHIS X W EDGE OF 2IN IP WITH CE TAG 10IN UP ON NE COR 200TH ST E & AVE F-8 50FT N & 50FT E C/L INT	CL 3451
LANCASTR (1975)	3044.419	CE TAG IN 2IN IP 8IN UP ON SW COR AVE F & 200TH ST E 50FT S & 50FT W C/L INT	CL 3452
LANCASTR (1975)	3043.941	CS MON 14IN DN @ C/L INT 200TH ST E & AVE F MKD (SEC COR 25 30 36 31 T8N R8W R9W)	CL 3453
LANCASTR (1975)	3069.972	CS MON 12IN DN @ C/L INT 200TH ST E & AVE E-8 MKD (1/4 COR 25 30 T8N R8W R9W) USE S EDGE	CL 3454
LANCASTR (1975)	3072.342	BN SW COR 4IN STK 2IN UP @ SW COR 200TH ST E & AVE E-8 30FT S & 30FT W C/L INT	CL 3455

QUAD-YEAR	ELEV	DESCRIPTION (INCLUDE QUAD AND YEAR IN DESCRIPTION)	BM NUMBER
LANCASTR (1975)	3091.917	CS MON (S EDGE) 6IN DN @ C/L INT 200TH ST E & AVE E MKD (24 19 25 30 T8N R8W R9W)	CL 3456
LANCASTR (1975)	3093.277	BN NE COR 4IN STK 2IN UP @ NE COR 200TH ST E & AVE E 30FT N & 30FT E C/L INT	CL 3457
LANCASTR (1975)	3138.308	BN NW COR 4IN STK 4IN UP @ SE COR 200TH ST E & AVE D-8 30FT S & 30FT E C/L INT	CL 3458
LANCASTR (1975)	3135.598	CS MON 18IN DN @ C/L INT 200TH ST E & AVE D-8 MKD (1/4 COR 24 19 T8N R8W R9W)	CL 3459
LANCASTR (1975)	3057.542	CHIS X ON NE EDGE 2IN IP WITH CE TAG 3IN UP ON PROP C/L AVE D 30FT E C/L 200TH ST E	CL 3460
LANCASTR (1975)	2975.641	CSBM MON 4IN UP 30FT E C/L 200TH ST E & 0.25MI N AVE D MKD (RP A2) 2IN IP 3FT UP 2FT NE	CL 3461
LANCASTR (1975)	2903.409	2IN IP & CE TAG 2IN UP @ SE COR 200TH ST E & AVE C-8 30FT S & 100FT E C/L INT	CL 3462
LANCASTR (1975)	2903.905	BN SE COR 4IN STK 4IN UP @ SW COR 200TH ST E & AVE C-8 30FT S & 30FT W C/L INT	CL 3463
LANCASTR (1975)	2779.023	CS MON 18IN DN @ C/L INT 200TH ST E & AVE C MKD (SEC COR 12 7 13 18 T8N R8W R9W)	CL 3464
LANCASTR (1975)	2779.832	PM S EDGE OF 2IN IP WITH CE TAG 8IN UP @ NE COR 200TH ST E & AVE C 40FT N & 40FT E C/L INT	CL 3465
LANCASTR (1975)	2774.108	CS MON 18IN DN @ C/L INT AVE C & 205TH ST E MKD (1/4 COR 7 18 T8N R8W)	CL 3466
LANCASTR (1975)	2775.123	BN N EDGE 4IN STK 5IN UP ON C/L 205TH ST E 30FT N C/L AVE C	CL 3467
LANCASTR (1975)	2767.646	BN NE COR 4IN STK 2IN UP ON SW COR AVE C & 210TH ST E 30FT S & 30FT W C/L INT	CL 3468
LANCASTR (1975)	2765.036	CS MON 14IN DN @ C/L INT AVE C & 210TH ST E MKD (SEC COR 7 8 18 17 T8N R8W)	CL 3469
LANCASTR (1975)	2778.994	CS MON 6IN DN @ C/L INT AVE C & 215TH ST E MKD (1/4 COR 8 17 T8N R8W)	CL 3470
LANCASTR (1975)	2778.230	CS MON 16IN DN @ C/L INT AVE C & 220TH ST E MKD (SEC COR 8 9 17 16 R8W T8N)	CL 3472
LANCASTR (1975)	2779.645	BN NE COR 4IN STK 4IN UP ON NE COR AVE C & 220TH ST E 30FT N & 30FT E C/L INT	CL 3473

QUAD-YEAR	ELEV	DESCRIPTION (INCLUDE QUAD AND YEAR IN DESCRIPTION)	BM NUMBER
LANCASTR (1975)	2768.900	CS MON 14IN DN @ C/L INT AVE C & 225TH ST E MKD (1/4 COR 9 16 R8W T8N)	CL 3474
LANCASTR (1975)	2770.361	BN NE COR 4IN STK 4IN UP ON C/L PROD 225TH ST E 30FT N C/L AVE C	CL 3475
LANCASTR (1975)	2780.593	CS MON 12IN DN @ C/L INT AVE C & 230TH ST E MKD (SEC COR 9 10 16 15 R8W T8N)	CL 3476
LANCASTR (1975)	2783.003	1-1/2IN IP & USCE MON 7IN UP @ SE COR AVE C & 230TH ST E MKD (BM 16 1963) 2IN IP 5FT UP 2FT SE	CL 3477
LANCASTR (1975)	2822.032	CS MON 12IN DN @ C/L INT 230TH ST E & AVE C-8 MKD (1/4 COR 16 15 T8N R8W) USE E EDGE	CL 3478
LANCASTR (1975)	2823.909	BN NW COR 4IN STK 6IN UP ON C/L AVE C-8 30FT W C/L 230TH ST E	CL 3479
LANCASTR (1975)	2896.322	PK IN CONC STEP OF OLD FOUNDATION 250FT E & 150FT S C/L INT 230TH ST E & AVE D MKD (BM)	CL 3481
LANCASTR (1975)	2945.519	CS MON 12IN DN @ C/L INT 230TH ST E & AVE D-8 MKD (1/4 COR 21 22 T8N R8W)	CL 3482
LANCASTR (1975)	3015.906	CS MON 6IN DN @ C/L INT 230TH ST E & AVE E MKD (SEC COR 21 22 27 28 T8N R8W)	CL 3484
LANCASTR (1975)	3074.567	CS MON 2IN UP @ C/L INT 230TH ST E & AVE E-8 MKD (1/4 COR 28 27 T8N R8W)	CL 3486
LANCASTR (1975)	3058.961	CS MON 8IN DN IN WELL @ C/L INT 230TH ST E & AVE F MKD (SEC COR 28 27 33 34 R8W T8N)	CL 3487
LANCASTR (1975)	3059.631	2IN IP & CE TAG 10IN UP @ SW COR 230TH ST E & AVE F 50FT S & 50FT W C/L INT	CL 3488
LANCASTR (1975)	3037.628	2IN IP & CE TAG 9IN UP ON NW COR 230TH ST E & AVE F-8 50FT N & 50FT W C/L INT	CL 3489
LANCASTR (1975)	3036.153	CS MON 12IN DN @ C/L INT 230TH ST E & AVE F-8 MKD (1/4 COR 33 34 R8W T8N)	CL 3490
LANCASTR (1975)	3068.911	CS MON 8IN DN @ C/L INT FUT AVE E & 205TH ST E MKD (1/4 COR 19 30 T8N R8W)	CL 3491
LANCASTR (1975)	3070.951	BN NE COR 4IN STK 8IN UP 30FT N C/L INT FUT AVE E & 205TH ST E	CL 3492
LANCASTR (1975)	3055.956	CS MON 10IN DN @ C/L INT FUT AVE E & 210TH ST E MKD (SEC COR 19 20 30 29 T8N R8W)	CL 3493

QUAD-YEAR	ELEV	DESCRIPTION (INCLUDE QUAD AND YEAR IN DESCRIPTION)	BM NUMBER
LANCASTR (1975)	3058.393	BN NW COR 4IN STK 8IN UP @ NW COR AVE E & 210TH ST E 30FT N & 30FT W C/L INT	CL 3494
LANCASTR (1975)	3054.504	CS MON 8IN DN @ C/L INT AVE E & 215TH ST E MKD (1/4 COR 20 29 R8W T8N)	CL 3495
LANCASTR (1975)	3056.494	BN NW COR 4IN STK 6IN UP ON C/L 215TH ST E 30FT N C/L AVE E	CL 3496
LANCASTR (1975)	3035.928	BN NE COR 4IN STK 10IN UP @ NW COR AVE E & 220TH ST E 30FT N & 30FT W C/L INT	CL 3497
LANCASTR (1975)	3033.342	CS MON 14IN DN @ C/L INT AVE E & 220TH ST E MKD (SEC COR 20 21 28 29 R8W T8N)	CL 3498
LANCASTR (1975)	3056.018	BN SE COR 4IN STK 6IN UP ON C/L 225TH ST E 30FT S C/L AVE E	CL 3499
LANCASTR (1975)	3056.053	CS MON 6IN DN @ C/L INT AVE E & 225TH ST E MKD (1/4 COR 28 21 T8N R8W)	CL 3500
LANCASTR (1975)	2912.173	CHIS X E EDGE OF 2IN IP WITH CE TAG 8IN UP ON NW COR AVE J & 205TH ST E 50FT N & 50FT W C/L INT	CL 3501
LANCASTR (1975)	2912.203	CHIS X SW EDGE OF 2IN IP WITH CE TAG 8IN UP ON SE COR AVE J & 205TH ST E 50FT S & 50FT E C/L INT	CL 3502
LANCASTR (1975)	2879.105	CHIS X IN W EDGE 2IN IP WITH CE TAG 6IN UP ON NE COR AVE J & 210TH ST E 50FT N & 50FT E C/L INT	CL 3504
LANCASTR (1975)	2848.724	NAIL IN 2IN IP 4IN UP ON NW COR AVE J & 215TH ST E 50FT N & 50FT W C/L INT	CL 3505
LANCASTR (1975)	2848.205	CE TAG IN 2IN IP 3IN UP ON NE COR AVE J & 215TH ST E 50FT N & 50FT E C/L INT	CL 3506
LANCASTR (1975)	2852.672	CHIS X IN SE EDGE 2IN IP WITH CE TAG 2IN UP ON NW COR AVE J & 220TH ST E 50FT N & 50FT W C/L INT	CL 3507
LANCASTR (1975)	2853.075	NAIL IN 2IN IP 1IN UP ON SE COR AVE J & 220TH ST E 50FT S & 50FT E C/L INT	CL 3508
LANCASTR (1975)	2893.030	2IN IP & CE TAG 4IN UP ON NW COR AVE J & 225TH ST E 50FT N & 50FT W C/L INT	CL 3509
LANCASTR (1975)	2895.536	CHIS X IN W EDGE 2IN IP WITH CE TAG 4IN UP ON SE COR AVE J & 225TH ST E 50FT S & 50FT E C/L INT	CL 3510
LANCASTR (1975)	2939.999	CE TAG IN 2IN IP 2IN UP ON SW COR AVE J & 230TH ST E 50FT S & 50FT W C/L INT	CL 3511

QUAD-YEAR	ELEV	DESCRIPTION (INCLUDE QUAD AND YEAR IN DESCRIPTION)	BM NUMBER
LANCASTR (1975)	2937.792	CHIS X IN W EDGE 2IN IP WITH CE TAG 12IN UP ON NE COR AVE J & 230TH ST E 50FT N & 50FT E C/L INT	CL 3512
LANCASTR (1975)	2944.663	CE TAG IN 2IN IP 8IN UP ON SW COR AVE J & 235TH ST E 50FT S & 50FT W C/L INT	CL 3513
LANCASTR (1975)	2947.243	CHIS X IN S EDGE 2IN IP WITH CE TAG 6IN UP ON NE COR AVE J & 235TH ST E 50FT N & 50FT E C/L INT	CL 3514
LANCASTR (1975)	2959.320	CS MON 10IN DN @ C/L INT 220TH ST E & AVE G-8 MKD (1/4 COR 5 4 T7N R8W)	CL 3515
LANCASTR (1975)	2957.499	CHIS X IN S EDGE 2IN IP WITH NAIL 10IN UP ON SE COR 220TH ST E & AVE G-8 40FT S & 50FT E C/L INT	CL 3516
LANCASTR (1975)	2941.778	CHIS X IN S EDGE 2IN IP WITH NAIL 5IN UP ON NE COR 220TH ST E & AVE H 50FT N & 50FT E C/L INT	CL 3517
LANCASTR (1975)	2939.137	CS MON 12IN DN @ C/L INT 220TH ST E & AVE H MKD (SEC COR 5 4 8 9 T7N R8W)	CL 3518
LANCASTR (1975)	2917.227	CHIS X IN E EDGE 2IN IP WITH NAIL 4IN UP ON NW COR 220TH ST E & AVE H-8 50FT N & 50FT W C/L INT	CL 3519
LANCASTR (1975)	2915.747	CS MON 18IN DN @ C/L INT 220TH ST E & AVE H-8 MKD (1/4 COR 8 9 T7N R8W)	CL 3520
LANCASTR (1975)	2892.977	CHIS X IN S EDGE 2IN IP WITH NAIL 5IN UP ON NW COR 220TH ST E & AVE I 50FT N & 50FT W C/L INT	CL 3521
LANCASTR (1975)	2891.718	CS MON 6IN DN @ C/L INT 220TH ST E & AVE I MKD (SEC COR 8 9 16 17 T7N R8W) USE S EDGE	CL 3522
LANCASTR (1975)	2874.864	NAIL IN 2IN IP 4IN UP ON NW COR 220TH ST E & AVE I-8 50FT N & 50FT W C/L INT	CL 3523
LANCASTR (1975)	2873.057	CS MON 12IN DN @ C/L INT 220TH ST E & AVE I-8 MKD (1/4 COR 17 16 T7N R8W)	CL 3524
LANCASTR (1975)	2840.281	CS MON 18IN DN @ C/L INT 220TH ST E & AVE J-8 MKD (1/4 COR 20 21 T7N R8W) USE N EDGE	CL 3525
LANCASTR (1975)	2840.441	CHIS X IN N EDGE 2IN IP WITH NAIL 4IN UP ON SW COR 200TH ST E & AVE J-8 50FT S & 50FT W C/L INT	CL 3526
LANCASTR (1975)	2830.117	NAIL IN 2IN IP 6IN UP ON NE COR 220TH ST E & AVE K 50FT N & 50FT E C/L INT	CL 3527
LANCASTR (1975)	2827.917	CS MON 12IN DN @ C/L INT 220TH ST E & AVE K MKD (SEC COR 20 21 29 28 T7N R8W)	CL 3528

QUAD-YEAR	ELEV	DESCRIPTION (INCLUDE QUAD AND YEAR IN DESCRIPTION)	BM NUMBER
LANCASTR (1975)	2806.401	CHIS X IN E EDGE 2IN IP WITH NAIL ON NE COR 220TH ST E & AVE K-8 50FT N & 50FT E C/L INT	CL 3529
LANCASTR (1975)	2803.466	CS MON 12IN DN @ C/L INT 220TH ST E & AVE K-8 MKD (1/4 COR 29 28 T7N R8W)	CL 3530
LANCASTR (1975)	2777.602	CHIS X IN N EDGE 2IN IP WITH CE TAG 8IN UP ON NW COR 220TH ST E & AVE L 40FT N & 40FT W C/L INT	CL 3531
LANCASTR (1975)	2775.103	CS MON 10IN DN @ C/L INT 220TH ST E & AVE L MKD (SEC COR 28 29 32 33 T7N R8W) USE S EDGE	CL 3532
LANCASTR (1975)	2762.596	CHIS X IN W EDGE 2IN IP WITH CE TAG 7IN UP ON C/L AVE L-8 40FT W C/L 220TH ST E	CL 3533
LANCASTR (1975)	2761.475	CS MON 12IN DN @ C/L INT 220TH ST E & AVE L-8 MKD (1/4 COR 32 33 T7N R8W)	CL 3534
LANCASTR (1975)	2364.447	CSBM MON 3IN UP ON C/L 125TH ST E & 50FT N C/L AVE E MKD(106-115A 1972 RE 7078) 2IN IP 2FT S	CL 3633D
LANCASTR (1975)	2399.483	L&BN IN CB 30FT N & 82FT E C/L INT 120TH ST E & AVE G MKD (BM)	CL 3634D
LANCASTR (1975)	2371.345	CHIS X IN N EDGE 1 1/2 IN IP W/CONC PL & BRAD FL 59FT N & 59FT E C/L INT AVE E & 135TH ST E	CL 3665A
LANCASTR (1975)	2366.626	CHIS X IN N EDGE 1 1/2 IN IP W/CONC PLUG & BRAD FL 54FT N & 54FT E C/L INT AVE E & 130TH ST E	CL 3666D
LANCASTR (1975)	2357.167	L & BN IN SW COR CONC SLAB 149FT N & 116FT E C/L INT AVE E & 120TH ST E MKD BM	CL 3667D
LANCASTR (1975)	2361.171	CHIZ X ON S EDGE 2IN IP 4IN UP 42FT N C/L AVE E & 327FT W C/L 115TH ST E 20FT W C/L DIRT RD TO HSE NO 11337	CL 3668D
LANCASTR (1975)	2356.895	L&BN IN N SIDE CONC FENCE POST 18IN UP 30FT E 110TH ST E & 31FT N AVE E C/L MKD (RDBM)	CL 3669D
LANCASTR (1975)	2348.848	SPK FL IN CUT OFF TELEPHONE POLE 42FT S & 30FT E C/L INT AVE E & 100TH ST E	CL 3670
LANCASTR (1975)	2343.235	CS MON IN WELL 10IN DN @ C/L INT AVE E & 95TH ST E MKD (1/4 COR 20 29 R10W T8N RE 5869) USE N EDGE	CL 3671D
LANCASTR (1975)	3022.915	CHIZ X ON E EDGE 2IN IP W/CONC PLUG & NAIL 3IN UP 50FT S & 50FT W C/L INT AVE G & 230TH ST E	CL 3672
LANCASTR (1975)	3008.766	CHIZ X ON N EDGE 2IN IP W/CE TAG 10IN UP 50FT S & 50FT E C/L INT AVE G & 225TH ST E	CL 3673

QUAD-YEAR	ELEV	DESCRIPTION (INCLUDE QUAD AND YEAR IN DESCRIPTION)	BM NUMBER
LANCASTR (1975)	3009.457	2IN IP & CE TAG 6IN UP 50FT N & 50FT W C/L INT AVE G & 225TH ST E	CL 3674
LANCASTR (1975)	2981.483	CHIZ X ON E EDGE 2IN IP WCONC PLUG & NAIL 4IN UP 50FT S & 50FT W C/L INT AVE G & 220TH ST E	CL 3675
LANCASTR (1975)	2402.915	L&BN IN SW COR CONC SLAB MOTOR BASE 161FT N & 225FT E C/L INT AVE H & 105TH ST E MKD (BM)	CL 3676D
LANCASTR (1975)	2879.243	L & BN IN CONC FTG 6IN STEEL GUARD POST 40FT S & 45FT W C/L INT AVE J & 210TH ST E MKD BM	CL 3678
LANCASTR (1975)	2577.839	CHIZ X ON E EDGE 2IN IP W/CE TAG 8IN UP 50FT N & 50FT W C/L INT AVE J & 165TH ST E	CL 3679
LANCASTR (1975)	2466.963	CHIS X ON E EDGE 1 1/2IN IP CONC PL & BD 1IN UP 50FT S & 50FT E C/L INT AVE J & 130TH ST E	CL 3680
LANCASTR (1975)	2447.201	2IN IP W/CS TAG 4IN UP 40FT S & 40FT E C/L INT AVE J & 95TH ST E USE W EDGE	CL 3681D
LANCASTR (1975)	2524.922	LACS MON 12IN DN @ C/L INT AVE K & 155TH ST E MKD (20-29 T7N R9W 1/4 SEC COR)	CL 3682
LANCASTR (1975)	2471.152	L&BN IN S/W COR CONC & MAC RESERVOIR 0.4 MI N C/L AVE K & 87FT E C/L 110TH ST E MKD (BM)	CL 3683D
LANCASTR (1975)	2532.246	CHIS X ON W EDGE 2 1/2 IP 18IN UP 82FT N C/L AVE L-8 & 92FT W C/L 110TH ST E	CL 3686
LANCASTR (1975)	2425.469	RDBM MON IN WELL 40FT N & 40FT E C/L INT AVE E & 140TH ST E MKD (1972)	CL 3688
LANCASTR (1975)	2458.553	LACS MON IN WELL 24IN DN ON C/L INT AVE E-8 & 140TH ST E MKD(R10W T8N 1/4COR 25 30 R9W) USE E	CL 3689
LANCASTR (1975)	2449.886	CHIZ X ON NE COR 2IN IP W/CONC PLUG & RE TAG NO 4750 25FT N & 50FT E C/L INT AVE H-8 & 140TH ST E	CL 3690
LANCASTR (1975)	2460.036	2IN IP 50FT N & 50FT W C/L INT AVE I & 140TH ST E USE S EDGE	CL 3691
LANCASTR (1975)	2718.857	CHIZ X ON E EDGE 2IN IP W/CONC PLUG & CS TAG 12IN UP 50FT N & 50FT W C/L INT FUT AVE G-8 & FUT 160TH ST E	CL 3692
LANCASTR (1975)	2718.110	LACS MON 18IN DN @ C/L INT FUT AVE G-8 & FUT 160TH ST E MKD(R9W T7N 1/4COR 5 4 1963) USE W ED	CL 3693
LANCASTR (1975)	2682.265	CHIZ X ON N EDGE 2IN IP 12IN UP 50FT N & 50FT W C/L INT 160TH ST E & FUT AVE H	CL 3694

QUAD-YEAR	ELEV	DESCRIPTION (INCLUDE QUAD AND YEAR IN DESCRIPTION)	BM NUMBER
LANCASTR (1975)	2682.475	LACS MON 6IN UP @ C/L INT 160TH ST E & FUT AVE H MKD(SEC COR 5 4 8 9 R9W T7N RE 329) USE E EDGE	CL 3695
LANCASTR (1975)	2629.599	LACS MON 24IN DN @ C/L INT 160TH ST E & FUT AVE H-8 MKD(1/4COR 8 9 R9W T7N RE 63)	CL 3696
LANCASTR (1975)	2633.157	CHIZ X ON W EDGE 2IN IP W/WOOD PLUG & N @ C/L FUT AVE H-8 & 30FT E C/L 160TH ST E	CL 3697
LANCASTR (1975)	2589.933	CHIZ X ON N EDGE 2IN IP W/CONC PLUG & CS TAG 50FT N & 50FT W C/L INT 160TH ST E & FUT AVE I	CL 3698
LANCASTR (1975)	2589.860	LACS MON 12IN DN @ C/L INT 160TH ST E & AVE I MKD(SEC COR 8 9 17 16 T7N R9W)	CL 3699
LANCASTR (1975)	2539.534	LACS MON 18IN DN @ C/L INT 160TH ST E & FUT AVE I-8 MKD(1/4COR 17 16 RE 63) USE W EDGE	CL 3700
LANCASTR (1975)	2541.546	2IN IP 6IN UP W/CONC PLUG & CS TAG 50FT S & 50FT E C/L INT 160TH ST E & FUT AVE I-8 USE W EDGE	CL 3701
LANCASTR (1975)	2948.425	L & BN IN NE COR CONC BASE OF FIRE HYDRANT 36FT S & 76FT E C/L INT 200TH ST E & LANCASTER BLVD	CL 3702
LANCASTR (1975)	2806.655	LACS MON 12IN DN @ C/L 200TH ST E & AVE K-8 MKD(1/4COR 25 30 T7N R9W R8W RE 5869)	CL 3703
LANCASTR (1975)	3013.882	L & T ON TOP OF GRANITE ROCK 75FT N & 55FT W C/L INT AVE E & 230TH ST E	CL 3704
LANCASTR (1975)	2883.148	LACS MON 12IN DN @ C/L INT 230TH ST E & AVE D MKD(16 15/21 22 T8N R8W 1931) USE S EDGE @ E	CL 3705
LANCASTR (1975)	2887.784	2IN IP W/CE TAG 6IN UP 40FT S & 40FT W C/L INT FUT 240TH ST E & FUT AVE K	CL 3707
LANCASTR (1975)	2924.968	RDBM MON IN WELL 8IN DN 43FT S & 50FT E C/L INT 240TH ST E & AVE J	CL 3708
LANCASTR (1975)	2549.371	2IN IP & CS TAG 10IN UP ON C/L 115TH ST E 50FT N/O 1/4 COR @ C/L INT AVE M	CL 3744
LANCASTR (1975)	2547.185	LACS MON 2IN DN @ C/L INT AVE M & 115TH ST E MKD (CO SURV 1/4 SEC COR 34 3 T6N T7N R10W)	CL 3745
BASELINE (1973)	2846.796	2IN IP 5IN UP W/CONC PLUG & CE TAG 50FT N & 50FT E C/L INT 240TH ST E & AVE M (DIRT)	CL 4131
BASELINE (1973)	2603.748	RDBM TAG IN ROCK & CONC HDWL 15FT W C/L 180TH ST E (DIRT) & 100FT S C/L AVE M (DIRT) 60FT SW OF USGS MON W/WITNESS POST	CL 4136

QUAD-YEAR	ELEV	DESCRIPTION (INCLUDE QUAD AND YEAR IN DESCRIPTION)	BM NUMBER
BASELINE (1973)	2672.143	CS MON IN WELL 8IN DN @ C/L INT AVE O & FUT 140TH ST E MKD(SEC COR 12 7 18 13 R9W T6N)	CL 4166
BASELINE (1973)	2769.481	2IN IP W/CONC PLUG & .45 CARTRIDGE 8IN UP 50FT S & 50FT E C/L INT AVE O & FUT 135TH ST E CHIZ X ON N EDGE	CL 4167
BASELINE (1973)	2772.639	CS MON IN WELL 8IN DN @ C/L INT AVE O & FUT 135TH ST E MKD(1/4 COR 12 13 T6N R10W)	CL 4168
BASELINE (1973)	2769.875	2IN IP W/CONC PLUG & CE TAG 5IN UP 50FT S & 50FT E C/L INT AVE O & FUT 130TH ST E CHIZ X ON N EDGE	CL 4169
BASELINE (1973)	2742.566	2IN IP W/CONC PLUG & CE TAG FLUSH 50FT S & 50FT E C/L INT AVE O & FUT 125TH ST E CHIZ X ON S EDGE	CL 4170
BASELINE (1973)	2746.847	2IN IP 8IN UP 50FT N & 50FT W C/L INT AVE O & FUT 125TH ST E CHIZ X ON W EDGE	CL 4171
BASELINE (1973)	2671.825	2IN IP W/CONC PLUG & N 50FT N & 50FT E C/L INT AVE O & FUT 120TH ST E CHIZ X ON W EDGE	CL 4172
BASELINE (1973)	2613.547	2IN IP W/CONC PLUG & BD 18IN DN 50FT N & 50FT E C/L INT AVE O & FUT 115TH ST E CHIZ X ON SW EDGE	CL 4173
BASELINE (1973)	2612.988	2IN IP W/CONC PLUG & BD 50FT S & 50FT W C/L INT AVE O & FUT 115TH ST E CHIZ X ON E EDGE	CL 4174
BASELINE (1973)	2606.074	1.5IN IP W/CONC PLUG & BD 50FT N & 50FT E C/L INT AVE O & 110TH ST E CHIZ X ON W EDGE	CL 4175
BASELINE (1973)	2594.971	1.5IN IP W/CONC PLUG & BD FLUSH 50FT N & 50FT E C/L INT AVE O & 105TH ST E CHIZ X ON W EDGE	CL 4176
BASELINE (1973)	2596.483	1.5IN IP W/CONC PLUG & BD FLUSH 50FT S & 50FT W C/L INT AVE O & 105TH ST E 41FT E/O PP NO 1062191E CHIZ X ON S EDGE	CL 4177
BASELINE (1973)	2585.437	CS MON IN WELL 15IN DN @ C/L INT AVE O & 100TH ST E MKD(SEC COR 8 9 17 16 T6N R10W) USE N EDGE	CL 4178
BASELINE (1973)	2587.498	2IN IP W/CONC PLUG & BD 40FT N & 40FT W C/L INT AVE O & 100TH ST E CHIZ X ON N EDGE	CL 4179
BASELINE (1973)	2580.983	CS MON IN WELL 10IN DN @ C/L INT AVE O & 95TH ST E MKD(1/4 COR 6 17 T6N R10W RE 5869)USE E EDG	CL 4180
LANCASTR (1975)	2473.881	RD MON IN WELL 31FT N & 91FT W C/L INT 90TH ST E & AVE K MKD (1974)	CL 4472A
LANCASTR (1975)	2524.177	RDBM MON IN WELL 333FT N & 36FT E C/L INT AVE M & 90TH ST E MKD (1974)	CL 4479

QUAD-YEAR	ELEV	DESCRIPTION (INCLUDE QUAD AND YEAR IN DESCRIPTION)	BM NUMBER
LANCASTR (1975)	2498.624	RDBM MON IN WELL 212FT N & 35FT E C/L INT AVE L & 90TH ST E MKD (1974)	CL 4480
LANCASTR (1975)	2453.767	RDBM MON IN WELL 204FT N & 34FT W C/L INT 90TH ST E & AVE J-8 MKD (1974)	CL 4481D
LANCASTR (1975)	2580.819	L&BM TAG IN CONC SLAB 75FT E/O & 45FT S/O C/L INT AVE J & 165TH ST E	CL 4488
LANCASTR (1975)	2615.056	L&BM TAG IN CONC SLAB 1655FT W/O & 45FT S/O C/L INT AVE J & 170TH ST E	CL 4489
LANCASTR (1975)	2680.077	2IN IP CONC PLUG & N 40FT N/O & 40FT W/O C/L AVE J & 170TH ST E	CL 4490
LANCASTR (1975)	2348.167	CS MON FL 46FT N & 46FT W C/L INT AVE E & 100TH ST E MKD (LACO SURV CONT SYS REDMEN SCHOOL G 14 RM 2 1972)	CL 4491D
LANCASTR (1975)	2351.942	CS MON IN WELL 10IN DN @ C/L INT AVE E & 105TH ST E MKD (21 29 R10W T8N RE 5869)W EDGE	CL 4492D
LANCASTR (1975)	2352.156	RDBM MON IN WELL 34FT S & 119FT E C/L INT AVE E & 105TH ST E MKD (1974)	CL 4493D
LANCASTR (1975)	2365.019	2IN IP & CS TAG 4IN UP 50FT N & 50FT E C/L INT AVE E & 125TH ST E USE CHIS X S EDGE	CL 4494D
LANCASTR (1975)	2407.311	RDBM MON IN WELL 66FT N & 37FT E C/L INT 120TH ST E & AVE G-8 MKD (1974)	CL 4496D
LANCASTR (1975)	2398.392	RDBM MON IN WELL 44FT S & 58FT W C/L INT 120TH ST E & AVE G MKD (1974)	CL 4497D
LANCASTR (1975)	2521.241	RDBM MON IN WELL 0.25 MILE S C/L AVE L & 64FT W C/L 110TH E 6FT E/O PP 938424E	CL 4498
LANCASTR (1975)	2512.981	1 1/2IN IP CONC PL & BR 12IN DN 50FT N/L & 50FT E/O C/L INT AVE L & 110TH ST E USE E EDGE	CL 4499
LANCASTR (1975)	2498.484	1 1/2IN IP CONC PL & BR 2IN UP 50FT S/O & 50FT W/O C/L INT AVE K-8 & 110TH ST E USE E EDGE	CL 4500
LANCASTR (1975)	2484.916	CS MON 3IN UP 44FT S & 45FT W C/L INT 110TH ST E & AVE K MKD (LACO SURV CONT ALPINE BUTTE 1972 RM 1)	CL 4501A
LANCASTR (1975)	2507.736	RDBM MON IN WELL 10FT S & 40FT W C/L INT 130TH ST E & AVE L MKD (1974)	CL 4502
LANCASTR (1975)	2496.192	CS MON 8IN DN @ C/L INT 130TH ST E & AVE K-8 MKD (CO SURV 1/4 COR 25 26 T7N R10W RE 329)	CL 4503

QUAD-YEAR	ELEV	DESCRIPTION (INCLUDE QUAD AND YEAR IN DESCRIPTION)	BM NUMBER
LANCASTR (1975)	2499.555	RDBM MON IN WELL 67FT N & 34FT E C/L INT 130TH ST E & AVE K-8 MKD (1974)	CL 4504
LANCASTR (1975)	2475.876	RDBM MON IN WELL 57FT N & 31FT E C/L INT 130TH ST E & AVE J-8 MKD (1974)	CL 4505
LANCASTR (1975)	2454.502	1 1/2IN IP CONC PL & BD 3IN UP 50FT S & 50FT E C/L INT 140TH ST E & AVE G	CL 4506
LANCASTR (1975)	2559.565	RDBM TAG IN NW COR CONC VAULT 0.25 MI W C/L 150TH ST E & 30FT S C/L AVE G	CL 4507
LANCASTR (1975)	2669.686	CS MON IN WELL 7IN DN @ C/L INT AVE G & 155TH ST E MKD (1/4 COR 32 5 T7N T8N R9W RE 5869)	CL 4508
LANCASTR (1975)	2743.436	2IN IP CONC PL & CS TAG 3IN UP 50FT S & 50FT W C/L INT AVE G & 160TH ST E	CL 4509
LANCASTR (1975)	2476.744	RDBM MON IN WELL 32FT S/O C/L AVE K & 23FT E/O C/L 95TH ST E 6FT SE P.P.NO 17 89672 E MKD (1977)	CL 4572D
LANCASTR (1975)	2395.208	RDBM MON IN WELL 35FT S/O C/L AVE H & 40FT E/O C/L FUT 95TH ST E MKD (BM 1977)	CL 4573D
LANCASTR (1975)	2450.636	RDBM MON IN WELL 170FT E C/L 100TH ST E & 33FT N AVE J MKD (1977)	CL 4574D
LANCASTR (1975)	2452.510	RDBM MON IN WELL @ NW COR AVE J & 110TH ST E 33FT N & 60FT W/O C/L INT MKD (1977)	CL 4575D
LANCASTR (1975)	2432.664	RDBM MON IN WELL @ NW COR 110TH ST E & AVE I 68FT N & 35FT W/O C/L INT MKD (1977)	CL 4576D
LANCASTR (1975)	2400.555	1-1/2IN IP CONC PL & SPK IN WELL 24" DN @ C/L INT AVE H & PROP 105TH ST E	CL 4582