

**LOS ANGELES COUNTY  
DEPARTMENT OF PUBLIC WORKS**

**BENCHMARKS**



**LLANO QUAD**

**2012 ADJUSTMENT  
2010 BASELINE  
NAVD 88 DATUM FOOT/METER**

## PREFACE

The Department of Public Works level net is composed of more than 1,700 miles or 2720 kilometers of levels supporting in excess of 9,000 benchmarks. Previously when a major readjustment of the net was undertaken, to emphasize the complete break with previous elevations, the CY, CG, and CL, series benchmarks were re-labeled DY, DG, and DL, respectively. Beginning in 1993 the Baseline readjustment year will be indicated on Baseline BM's, as indicated below (\*). Henceforth all BM numbers will be labeled as a Y, G, or L series that will no longer indicate the major adjustment year.

To facilitate the adjustment, indexing and distribution of the adjusted values of the net, the county territory was divided into 33 quads or areas. For the identification purposes each quad was given a name (i.e. "Rosemead", "La Mirada", and "Santa Fe"...etc). When benchmarks and elevations in the quad are used, the name of the bench and quad must be stated in the description, i.e.:

(*)	BASELINE	90.057	L&BR IN CTR OF CB RET @ NE COR	Y 9191
	(1990)	295.461	LA HABRA BLVD & VALLEY HOME AVE	

It is expected that this general adjustment will for the most part remain sound for 8 to 10 years. Updating constrained adjustments will continue in the future. When a quad is readjusted, new elevations will be published and the date of readjustment will be noted in the benchmark description. Two benchmarks with different adjustment dates will not normally agree with each other.

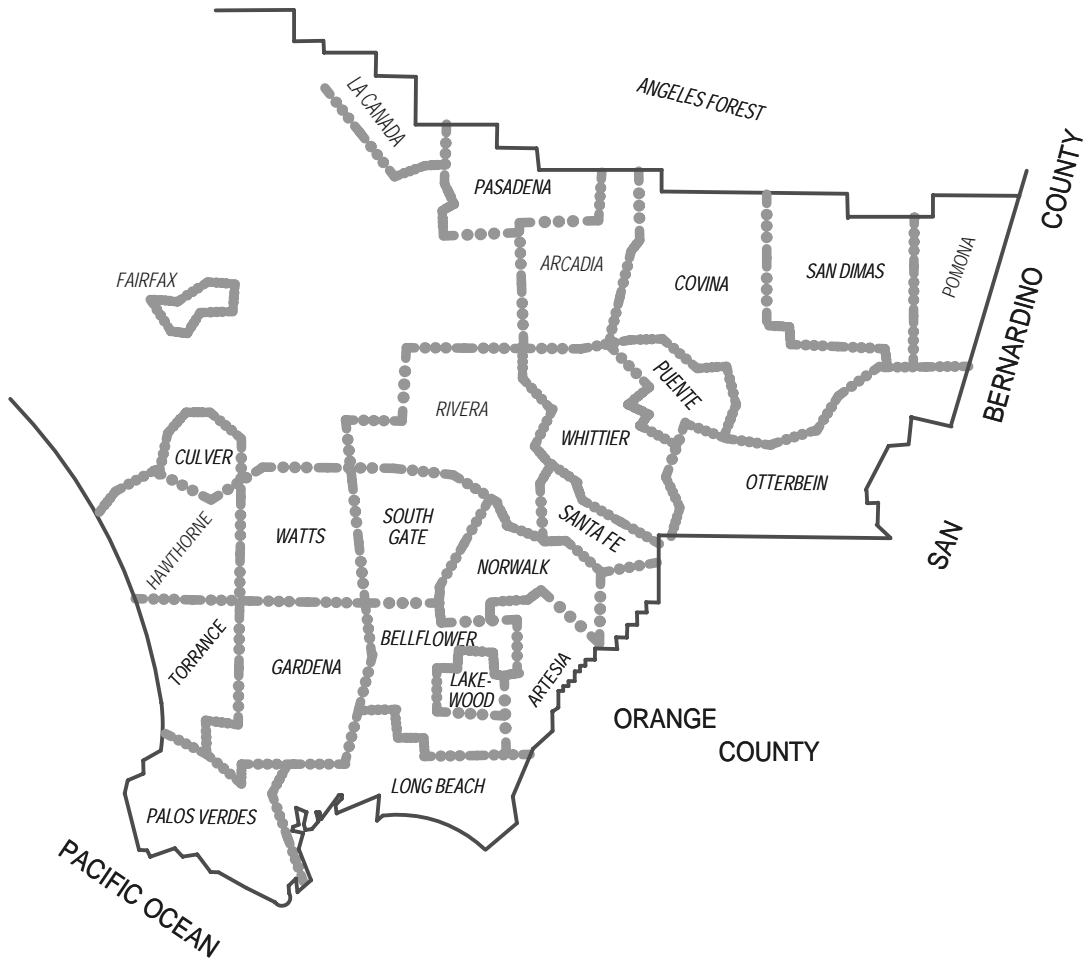
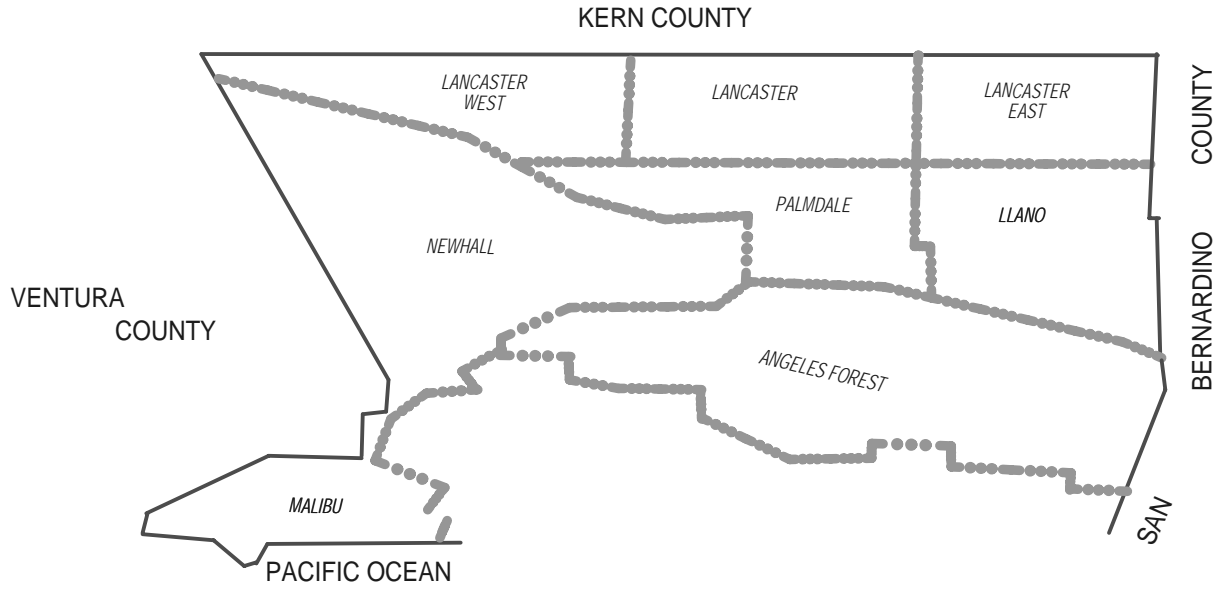
The basic accuracy of the net is reflected by an indicated field probable error of  $\pm 0.017$  feet per mile (4mm per kilometer) of leveling as determined from conditions of closure. However, many years of experience in vertical control in the greater Los Angeles basin and Antelope Valley indicates that because of varying degrees of subsidence and heaving, the true datum is recovered only by obtaining substantial agreement of a number of benchmarks.

The users of this network of benchmarks are invited to assist in its maintenance by notifying this department of cases of obliteration, apparent mistakes in descriptions or elevations, and the disturbance of benchmarks.

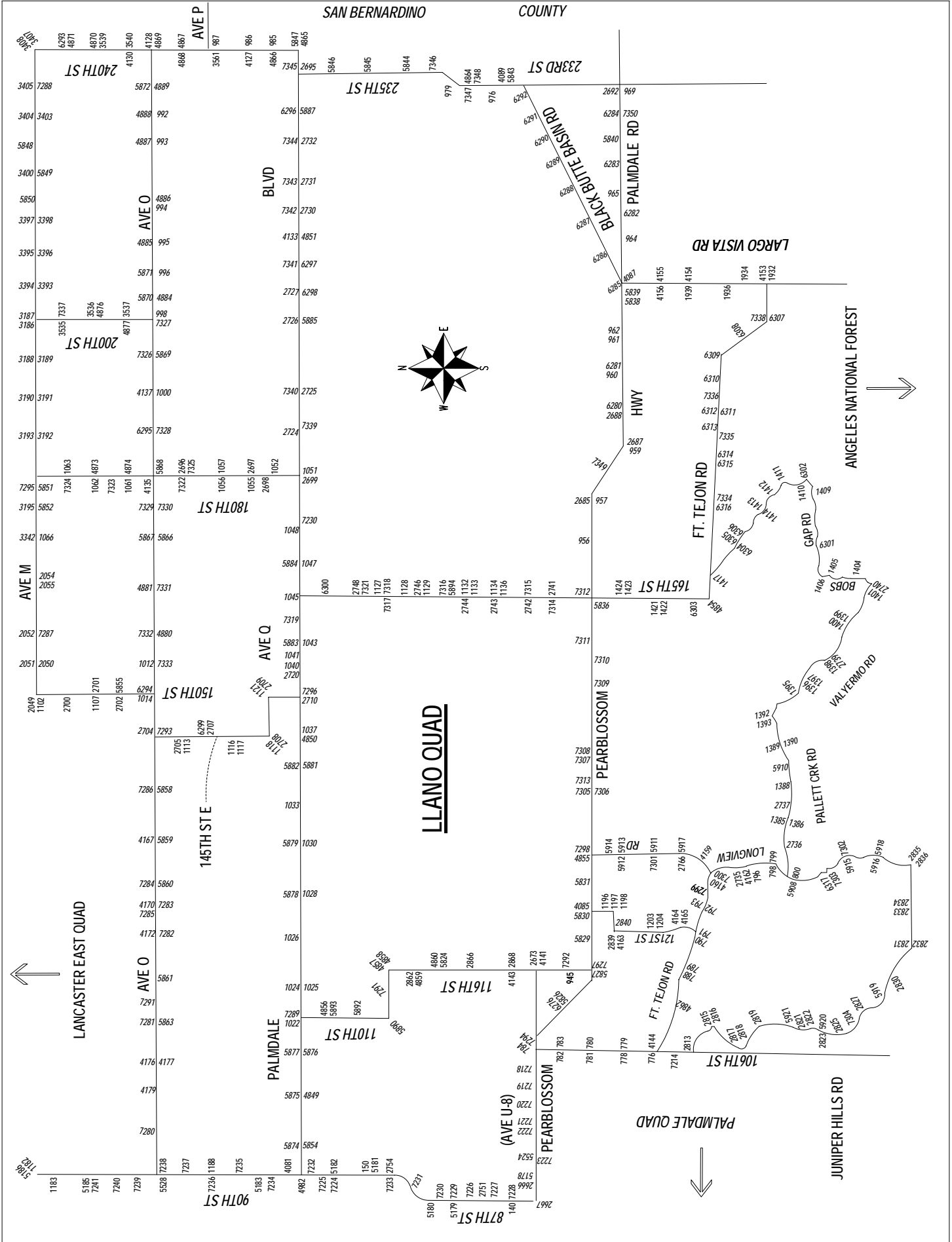
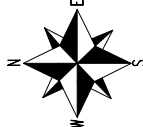
**Datum: North American Vertical Datum of 1988 (NAVD88)**

Note: NAVD 1988 minus approximately 3.0 feet (90 cm) equals NGVD 1929 Datum. For more accurate equations at individual benchmarks refer to previous publications.

# QUAD COVERAGE INDEX MAP



SAN BERNARDINO COUNTY



LANCASTER EAST QUAD

LLANO QUAD

PALMDALE QUAD

JUNIPER HILLS RD

ANGELES NATIONAL FOREST



QUAD YEAR	ELEV FOOT/METER	DESCRIPTION	BM NUMBER
BASELINE (2010)	2,863.462 872.786	RDBM TAG IN N SIDE CONC FTG OF 2" FENCE POST 135' W/O C/L 87TH ST E & 25' S/O C/L AVE U	L 140
BASELINE (2010)	2,688.457 819.444	RDBM TAG @ SW COR OF CONC SLAB 30' N/O C/L AVE R-8 & 45' E/O C/L 90TH ST E	L 150
BASELINE (2010)	3,268.898 996.363	RDBM MON IN WELL 0.5' DN @ SW COR FORT TEJON RD & 106TH ST E 100' S & 49' W/O C/L INT MKD (1958) IP MKR 2' W/O MON	L 776
BASELINE (2010)	3,167.908 965.581	CS MON IN WELL 2' DN @ C/L INT 106TH ST E & AVE W (PROP) 0.5MI N/O FORT TEJON RD MKD (SEC COR 20,21,28,29,R10W,T5N)	L 778
BASELINE (2010)	3,171.746 966.751	RDBM MON IN WELL 0.5' DN @ NE COR 106TH ST E & AVE W PROP 100' N & 49' E/O C/L INT 0.55MI N/O FORT TEJON RD MKD (1960) IP MKR 2' E/O MON	L 779
BASELINE (2010)	3,119.266 950.755	RDBM MON IN WELL 0.5' DN @ SW COR 106TH ST E & AVE V-8 90' S & 49' W/O C/L INT 2" IP MKR 2' W/O MON	L 780
BASELINE (2010)	3,117.890 950.336	2" IP WITH CUT SPK IN WELL.5' DN @ C/L INT 106TH ST E & AVE V-8	L 781
BASELINE (2010)	3,049.177 929.392	L&T IN SLY CONC FTG OF DWP TOWER #H220-1 @ SW COR 106TH ST E & AVE V 190' S & 56' W/O C/L INT	L 782
BASELINE (2010)	3,042.674 927.410	CS MON IN WELL 1.5' DN @ C/L INT 106TH ST E & AVE V MKD(16,17,20,21,T5N,R10W)	L 783
BASELINE (2010)	2,967.004 904.346	USGS MON UP 10" @ SW COR PEARBLOSSOM HWY & 106TH ST E 54' S & 43' W C/L INT MKD LS 23 1929	L 784
LLANO (2012)	3,395.249 1,034.875	RDBM MON 6" DN 55' S/O C/L FT TEJON RD & 325' E/O BUTTERFIELD STAGE RD MKD (PT 1960) MKR POST 2' S/O MON	L 788
LLANO (2012)	3,406.087 1,038.178	RDBM MON IN WELL FL 55' S C/L FT TEJON RD & 700' E/O BUTTERFIELD STAGE RD MKR POST 2' N/O MON	L 789
LLANO (2012)	3,476.610 1,059.674	RDBM MON IN WELL 10" DN @ SW COR FT TEJON RD & 121ST ST E 85' S & 45' W/O C/L INT MKR POST 2' E/O MON	L 790
LLANO (2012)	3,479.985 1,060.703	RDBM MON IN WELL FLUSH @ SW COR FT TEJON RD & 121ST ST E 171' S & 26' W/O C/L INT 5' N/O PP #1201431E MKR POST 2' W/O MON	L 791
LLANO (2012)	3,521.966 1,073.498	RDBM MON 10" DN @ SW COR FT TEJON RD & (126TH ST E.) DIRT RD 100' S & 120' W/O C/L INT MKD (1960)	L 792
LLANO (2012)	3,525.952 1,074.713	RDBM MON IN WELL 8" DN @ SE COR FT TEJON RD & (126TH ST E.) DIRT RD 76' S & 165' E/O C/L INT MKR POST 2' N/O MON	L 793
LLANO (2012)	3,545.507 1,080.674	SPK&BM TAG IN NW WINGWALL BRIDGE B-980 15' W/O C/L FT TEJON RD & 250' N/O C/L LONGVIEW RD TO S	L 796
LLANO (2012)	3,716.228 1,132.710	RDBM MON IN WELL 8" DN 27' W C/L LONGVIEW RD & 0.55MI S/O FT TEJON RD MKD (1960) MKR 2' W	L 798
LLANO (2012)	3,730.960 1,137.200	RDBM MON IN WELL 28' W C/L LONGVIEW RD & 0.60MI S/O FT TEJON RD MKD (1960) MKR 2' W/O MON	L 799

QUAD YEAR	ELEV FOOT/METER	DESCRIPTION	BM NUMBER
LLANO ( 2012 )	3,838.770 1,170.061	RDBM MON IN WELL 8" DN @ SE COR LONGVIEW RD & PALLETT CREEK RD 40' S & 161' E/O C/L INT MKD MKD (1960) MKR POST 2' S/O MON (5' NW/O NW FENCE COR)	L 800
LLANO ( 2012 )	3,023.041 921.426	USC&GS MON 8" UP 16' E C/L 116TH ST E & 440' S/O AVE V 43' SW/O PP #4072951E MKD (J 306 1935) 2" IP MKR POST 2' E/O MON	L 945
LLANO ( 2012 )	3,188.042 971.718	CSBM MON FLUSH 43' N & 100' W/O C/L PEARBLOSSOM HWY & 170TH ST E 53' E/O PP #1404342 MKD (106-38 1958) MKR POST 2' S/O MON	L 956
LLANO ( 2012 )	3,200.421 975.491	CSBM MON 4" UP 46' N & 79' E/O C/L INT 175TH ST E & PEARBLOSSOM HWY MKD (BM 106-39 1958) MKR POST 2' S/O MON	L 957
LLANO ( 2012 )	3,287.323 1,001.979	CSBM MON 4" UP 92' S & 135' E/O C/L INT AVE W & PEARBLOSSOM HWY 53' S/O PP #1404305E MKD (BM 106-41 1958) MKR POST 1' N/O MON	L 959
LLANO ( 2012 )	3,303.079 1,006.782	CSBM MON FLUSH 36' N/O C/L PEARBLOSSOM HWY & 0.5MI E/O CURVE @ AVE W 8' S/O PP #1404393E MKD (BM 106-42 1958) MKR POST 1' S/O MON	L 960
LLANO ( 2012 )	3,346.028 1,019.872	CSBM MON FL 35' N/O C/L PEARBLOSSOM HWY & 1.1MI E/O AVE W 6' S/O PP #1404381E MKD (BM 106-43 1958)	L 961
LLANO ( 2012 )	3,385.617 1,031.939	CSBM MON 4" UP 35' N/O C/L PEARBLOSSOM HWY & 500' W/O 198TH ST E 6' N/O PP (NO#) MKD (BM 106-44 1958) MKR POST 1' S/O MON	L 962
LLANO ( 2012 )	3,401.749 1,036.856	CSBM MON FLUSH 40' N/O C/L PEARBLOSSOM HWY & 0.55MI E/O LARGO VISTA RD (204TH ST E) 3' E/O PP #864607E MKD (BM 106-46 1958) MKR 1' N/O MON	L 964
LLANO ( 2012 )	3,401.416 1,036.755	CSBM MON 4" UP 40' N/O C/L PEARBLOSSOM HWY & 0.2MI E/O 213TH ST E 50' W/O DIRT RD TO N 50' E PP (NO#) MKD (BM 106-47 1958) MKR 1' S MON	L 965
LLANO ( 2012 )	3,398.434 1,035.846	CSBM MON @ SW COR 233RD ST E & PALMDALE RD 111' S & 25' W/O C/L INT 5' N/O PP #777983E MKD (BM 106-51 1958) MKR POST 1' N/O MON	L 969
LLANO ( 2012 )	3,123.838 952.149	CS MON 18" DN 18' W C/L 235TH ST E (DIRT RD) & 0.5MI N/O AVE U MKD (9,10,R8W,T5N,RE 329) MKR POST 5' E/O MON	L 976
LLANO ( 2012 )	3,038.618 926.174	CSBM MON 6" UP @ BASE SE RIDGE BLACK BUTTE 144' W/O C/L 235TH ST E 5' N/O AVE U MKD (BM 106-61 1958) MKR POST 2' E/O MON	L 979
LLANO ( 2012 )	2,914.561 888.361	CSBM MON FL 30' E/O C/L 240TH ST E & 108' S/O AVE Q 3' S/O PP #2274147E MKD BM 106-67 1958	L 985
LLANO ( 2012 )	2,890.828 881.127	CSBM MON 6" UP 31' E/O C/L 240TH ST E & 2' N/O C/L AVE P-8 5' W/O PP #864351E MKD (BM 106-68 1958) MKR POST 2' W/O MON	L 986
LLANO ( 2012 )	2,870.369 874.891	CSBM MON FL 36' E C/L 240TH ST E & 190' N/O C/L AVE P 2' S/O PP #1050 MKD (BM 106-69 1958) MKR POST 2' W/O MON	L 987
LLANO ( 2012 )	2,802.121 854.089	CS MON IN WELL 20" DN @ C/L INT AVE O & 230TH ST E 36' SE/O FENCE COR MKD (SEC COR 9,10,15,16 ,T6N,R8W)	L 992
LLANO ( 2012 )	2,786.499 849.327	1.5" IP & NAIL IN WELL 1' DN @ C/L INT AVE O & 225TH ST E 230' SW/O PP (NO#) & 5' E/O E SIDE P/L HSE #22339	L 993

QUAD YEAR	ELEV FOOT/METER	DESCRIPTION	BM NUMBER
LLANO ( 2012 )	2,773.208 845.276	CSBM MON 4" UP 35' N/O C/L AVE O & 40' E/O C/L 220TH ST E 5' E/O PP #734973E MKD (BM 106-76 1958) MKR POST 2' S/O MON	L 994
LLANO ( 2012 )	2,759.493 841.096	CSBM MON FL 35' N/O C/L AVE O & 112' E/O C/L 215TH ST E 6' E/O PP #4337633E MKD (BM 106-77 1958) MKR POST 2.5' SE/O MON	L 995
LLANO ( 2012 )	2,746.845 837.241	CSBM MON FL 36' N/O C/L AVE O & 220' E/O C/L 210TH ST E 3' W/O PP (#734963E) MKD (BM 106-78 1958) MKR POST 1' S/O MON	L 996
LLANO ( 2012 )	2,713.663 827.127	USGS MON 1.2' UP 40' N C/L AVE O & 69' W/O C/L 200TH ST E 20' W/O DIRT RD 200' W/O W SIDE HSE #20111 MKD (LS 33 1929) MKR 1' S/O MON	L 998
LLANO ( 2012 )	2,684.797 818.329	CSBM MON 4" UP 37' N C/L AVE O & 66' E/O C/L INT 190TH ST E MKD (BM 106-82 1959) MKR 2' N MON	L 1000
LLANO ( 2012 )	2,668.689 813.419	RDBM MON IN WELL W/COVER 40' S/O C/L AVE O & 121' W/O C/L 155TH ST E (PROP) MKR 2' S MON	L 1012
BASELINE ( 2010 )	2,649.466 807.560	RDBM MON 6" DN 5' NE/O PP (#799921) 38' N/O C/L AVE O & 364' W/O 150TH ST E MKD (1960) MKR POST 2' N/O MON	L 1014
LLANO ( 2012 )	2,688.068 819.326	RDBM MON IN WELL 8' W/O PP (#1219350E) 34' N C/L PALMDALE BLVD & 125' W/O C/L 110TH ST E MKD 1960	L 1022
LLANO ( 2012 )	2,696.470 821.887	RDBM MON IN WELL 5' NW/O PP #4400358E 33' N/O C/L PALMDALE BLVD & 195' W/O C/L 115TH ST E (UNIMPROVED) MKD (1960) MKR POST 2' N/O MON	L 1024
LLANO ( 2012 )	2,698.037 822.364	RDBM MON IN WELL 5' NW/O PP #4400359E 33' N/O C/L PALMDALE BLVD & 250' E/O C/L 115TH ST E MKD 1960) MKR POST 2' N/O MON	L 1025
LLANO ( 2012 )	2,708.155 825.448	RDBM MON IN WELL 4' NW/O PP #4400368E 33' N C/L PALMDALE BLVD & 90' W/O C/L 120TH ST E MKD (1960) MKR POST 2' N/O MON	L 1026
LLANO ( 2012 )	2,720.222 829.126	RDBM MON IN WELL 4'M NW/O PP #4400379E 33' N/O C/L PALMDALE BLVD & 150' W/O C/L 125TH ST E (UNIMPROVED) MKD (1960)	L 1028
LLANO ( 2012 )	2,729.424 831.931	RDBM MON DN 6" 33' N/O C/L PALMDALE BLVD & 112' W/O C/L 130TH ST E 4' N/O PP #4400391E MKD (1961) MKR POST 1' N/O MON	L 1030
LLANO ( 2012 )	2,743.122 836.106	RDBM MON IN WELL 5' NW/O PP #4503457E 36' N C/L PALMDALE BLVD & 115' E/O C/L LONGVIEW RD MKD (1960)	L 1033
LLANO ( 2012 )	2,766.304 843.172	RDBM MON IN WELL W/COVER DN 6" BELOW COVER & 1' BELOW GRND SURFACE 3' N/O PP #2174663E 33' N C/L PALMDALE BLVD 380' E/O C/L 145TH ST E MKR POST 2' N/O MON	L 1037
LLANO ( 2012 )	2,783.148 848.306	RDBM MON IN WELL 5' SE/O PP #672265H 33' S/O C/L PALMDALE BLVD & 125' W/O C/L 155TH ST E MKD (1960) MKR POST 2' S/O MON	L 1040
LLANO ( 2012 )	2,784.611 848.752	RDBM MON IN WELL 10' SW/O PP #585889H 33' S/O C/L PALMDALE BLVD & 351' E/O 155TH ST E MKD (1960) MKR POST 2' S/O MON	L 1041
LLANO ( 2012 )	2,785.837 849.126	RDBM MON IN WELL 10'M NW/O PP #4191308E 33' N/O C/L PALMDALE BLVD 176' E/O C/L 160TH ST E MKD (1960) MKR POST 2.5' S/O MON	L 1043

QUAD YEAR	ELEV FOOT/METER	DESCRIPTION	BM NUMBER
LLANO (2012)	2,789.520 850.248	RDBM MON IN WELL 6' NW/O PP #1190886E 33' N C/L PALMDALE BLVD & 180' E/O C/L 165TH ST E MKD 1960 MKR POST 2' S/O MON	L 1045
LLANO (2012)	2,785.428 849.001	RDBM MON IN WELL 7' NW/O PP #1190900E 33' N C/L PALMDALE BLVD 515' E/O 170TH ST E MKR POST 2' S/O MON	L 1047
LLANO (2012)	2,779.773 847.277	RDBM MON IN WELL 33' N/O C/L PALMDALE BLVD & 141' W/O C/L 175TH ST E (DIRT RD) MKR POST 1.5' S/O MON	L 1048
LLANO (2012)	2,772.127 844.947	RDBM MON IN WELL W/COVER FL 7' SW/O PP (#693201) 40' W/O C/L 180TH ST E & 110' N/O C/L PALMDALE BLVD MKD (1961) MKR POST 2' W/O MON	L 1051
LLANO (2012)	2,749.224 837.966	CS MON IN WELL 10" DN @ C/L INT 180TH ST E & AVE Q MKD (SEC 23,22,26,27,T6N,R9W)	L 1052
LLANO (2012)	2,725.754 830.812	RDBM MON IN WELL 6' W/O PP #825775E 60' E/O C/L 180TH ST E & 33' N/O C/L AVE P-8 MKD (1961) MKR POST 2' N/O MON	L 1055
LLANO (2012)	2,709.334 825.807	RDBM MON IN WELL 6' W/O PP (#767660E) 36' W/O C/L 180TH ST E & 285' S/O AVE P MKD (1961) MKR POST 2' W/O MON	L 1056
LLANO (2012)	2,706.799 825.035	USGS MON 4" UP 33' W/O C/L 180TH ST E ON FUT AVE P MKD (LS 1 1929) 100' S/O PP #1875922E	L 1057
LLANO (2012)	2,651.706 808.242	CSBM MON 6" UP @ SW COR 180TH ST E & AVE N-8 33' W & 125' S/O EXIST PVMT 5' N/O PP (NO#) MKD (BM 106-85 1959)	L 1061
LLANO (2012)	2,632.460 802.376	CSBM MON 6" UP 5' W/O PP #767685E 40' W & 33' N/O C/L INT 180TH ST E & AVE N MKD (BM 106-86 1959) MKR POST 2' NW/O MON	L 1062
LLANO (2012)	2,617.326 797.763	CSBM MON 6" UP 33' W/O C/L 180TH ST E & 30' N/O C/L FUT AVE M-8 MKD (BM 106-87 1959) MKR POST 2' E/O MON	L 1063
BASELINE (2010)	2,587.428 788.650	CSBM MON FLUSH @ SW COR AVE M & 170TH ST E 125' S & 23' W/O C/L INT MKD (BM 106-90 1959) MKR POST ON W SIDE MON (BENT OVER)	L 1066
BASELINE (2010)	2,578.369 785.889	CS MON IN WELL 8" DN @ C/L INT AVE M & 150TH ST E MKD (SEC COR 31,32,5,6,T6N,T7N,R9W)	L 1102
BASELINE (2010)	2,606.083 794.336	CS MON IN WELL 2.5' DN @ C/L INT 150TH ST E & AVE N MKD (5,6,7,8,T7N,R9W)	L 1107
LLANO (2012)	2,713.418 827.052	RDBM MON 8' S/O PP (#1201923E) 35' E/O C/L 145TH ST E & 70' S/O C/L AVE O-8 (UNIMPROVED) MKD (1960) MKR POST 2' E/O MON	L 1113
LLANO (2012)	2,774.919 845.798	RDBM MON IN WELL W/COVER 35' E/O C/L 145TH ST E & 100' N/O C/L AVE P-8 (UNIMPROVED) MKD 1961 MKR POST 2' E/O MON	L 1116
LLANO (2012)	2,769.762 844.226	RDBM MON IN WELL W/COVER 35' E/O C/L 145TH ST E & 100' S C/L AVE P-8 (UNIMPROVED) MKD (1960) MKR POST 2' E/O MON	L 1117
LLANO (2012)	2,745.994 836.981	CSBM MON 45' W/O C/L 145TH ST E & 35'M S/O C/L AVE Q 3' W/O PP #632132H MKD (BM Q145E RE5869)	L 1118
LLANO (2012)	2,788.757 850.016	CS MON 5' DN @ C/L INT AVE Q & 150TH ST E MKD (SEC 19,20,29,30,T6N,R9W)	L 1121



QUAD YEAR	ELEV FOOT/METER	DESCRIPTION	BM NUMBER
LLANO (2012)	2,865.744 873.481	RDBM MON IN WELL 44' E C/L 165TH ST E & 230' S/O C/L AVE S 20' E/O PP #325124E MKR 2' E/O MON	L 1127
LLANO (2012)	2,890.056 880.892	RDBM MON IN WELL 43' E C/L 165TH ST E & 290' N/O AVE S-8 20' E/O PP #4312464 MKR 2' W/O MON	L 1128
LLANO (2012)	2,895.071 882.420	RDBM MON IN WELL 44' E C/L 165TH ST E & 210' S/O C/L AVE S-8 20'M E/O PP (#4505377E) 2' W/O MON	L 1129
LLANO (2012)	2,954.277 900.466	RDBM MON IN WELL 36' E C/L 165TH ST E & 276' N/O C/L AVE T-8 55' S/O PP (NO#) MKR POST 2' W/O MON	L 1132
LLANO (2012)	2,962.206 902.883	RDBM MON IN WELL 36' E C/L 165TH ST E & 203' S/O C/L AVE T-8 105' S/O PP #1403613E MKR POST 2' E/O MON	L 1133
LLANO (2012)	2,997.474 913.633	RDBM MON IN WELL 36' E C/L 165TH ST E & 276' N C/L AVE U 53' S/O PP #1403624E	L 1134
LLANO (2012)	3,037.888 925.951	RDBM TAG IN W LEG TRANS TOWER I 23-5 135' E/O C/L 165TH ST E & 54' N/O AVE U-8	L 1136
BASELINE (2010)	2,528.922 770.818	CS BM MON 4" UP @ NE COR AVE M & 90TH ST E 36' N & 36' E/O C/L INT MKD (BM 107-18 1961)	L 1182
BASELINE (2010)	2,539.567 774.062	CSBM MON 4" UP @ NE COR 90TH ST E & AVE M-8 40' N & 38' E/O C/L INT MKD (BM 107-17 1961) MKR POST 3' E/O MON	L 1183
BASELINE (2010)	2,605.591 794.187	CSBM MON 6" UP @ NE COR 90TH ST E & AVE P 30' N & 69' E/O C/L INT MKD (BM 107-12 1960)	L 1188
LLANO (2012)	3,070.928 936.022	CS MON IN WELL 10" DN @ C/L INT 123RD ST E & AVE V-10 MKD (CO SUR RE 63)	L 1196
LLANO (2012)	3,096.386 943.781	L&T IN SE COR CONC WK TO CHURCH BLDG 30' W/O C/L 123RD ST E & 90' N/O C/L AVE V-12	L 1197
LLANO (2012)	3,099.344 944.683	CS MON IN WELL 1' DN @ C/L INT 123RD ST E & AVE V-12 MKD (CO SURV RE 63)	L 1198
LLANO (2012)	3,379.031 1,029.932	RDBM MON IN WELL @ NW COR 121ST ST E & AVE W-8 47' N & 45' W/O C/L INT MKD (1961) MKR POST 2' W/O MON	L 1203
LLANO (2012)	3,379.940 1,030.209	RDBM MON IN WELL @ SE COR 121ST ST E & AVE W-8 59' S & 35'M E/O C/L INT MKD (1961) MKR POST 2' E/O MON	L 1204
LLANO (2012)	3,817.505 1,163.579	RDBM MON IN WELL 13' N/O BARB WIRE FENCE 33' S/O C/L PALLETT CREEK RD 528' E/O POWER LINE CROSS @ DIRT RD (TO S) ADDRESS #13050 0.45MI E/O LONGVIEW RD MKR POST 2' S/O MON MON	L 1385
LLANO (2012)	3,811.075 1,161.619	RDBM MON IN WELL 3' N/O BARB WIRE FENCE 45' S/O C/L PALLETT CREEK RD 0.50MI E/O LONGVIEW RD MKD (1961) MKR POST 2' S/O MON (40' W/O PP#1031060H)	L 1386
LLANO (2012)	3,713.945 1,132.014	RDBM MON IN WELL 8" DN 37'M N/O C/L PALLETT CREEK RD 1.11MI NE/O LONGVIEW RD MKD (1961) MKR POST 2' N/O MON 171' W/O MI MKR #1.07	L 1388

QUAD YEAR	ELEV FOOT/METER	DESCRIPTION	BM NUMBER
LLANO ( 2012 )	3,596.797 1,096.307	RDBM MON IN WELL 8" DN 33' S/O C/L PALLETT CREEK RD 1.8MI NE/O LONGVIEW RD 0.5MI SW VALYERMO RD 53' W/O MI MKR #1.67 MKD (1961) MKR POST 2' S/O MON	L 1389
LLANO ( 2012 )	3,596.933 1,096.348	RDBM MON IN WELL 8" DN 33'M N/O C/L PALLETT CR RD 1.8MI NE/O LONGVIEW RD 0.5MI SW/O VALYERMO RD 105' E/O MI MKR #1.67 MKD (1961) MKR POST 2' N/O MON	L 1390
LLANO ( 2012 )	3,551.193 1,082.407	L&BN IN CONC ABUT @ SW END BRIDGE B213 16' S/O C/L VALYERMO RD & 200' E/O PALLETT CREEK RD	L 1392
LLANO ( 2012 )	3,551.219 1,082.415	L&BN IN CONC ABUT @ SE END BRIDGE B213 16' S/O C/L VALYERMO RD 260' E/O PALLETT CREEK RD	L 1393
LLANO ( 2012 )	3,604.591 1,098.683	RDBM TAG IN SE COR CONC DR TO HSE #30666 25' N C/L VALYERMO RD & 0.5MI E/O PALLETT CREEK RD	L 1395
LLANO ( 2012 )	3,636.685 1,108.465	RDBM TAG IN SW END BRIDGE WINGWALL #1025 15' S C/L VALYERMO RD & 0.9MI E/O PALLETT CREEK RD	L 1396
LLANO ( 2012 )	3,636.824 1,108.507	RDBM TAG IN NE END BRIDGE WINGWALL #1025 18' N C/L VALYERMO RD & 0.8MI E/O PALLETT CREEK RD	L 1397
LLANO ( 2012 )	3,712.050 1,131.436	RDBM TAG IN 1ST STEP TO HSE # 29835 BLDG #3 US RANGER STA 115' S C/L VALYERMO RD & 280' E/O C/L 157TH ST E	L 1398
LLANO ( 2012 )	3,811.379 1,161.712	CS MON 8" UP 79' N C/L VALYERMO RD & 0.58MI E/O 157TH ST E MKD (1/4 SEC COR 8,17,T4N,R9W) ON FENCE LINE 95' ELY FROM FENCE COR, 78' SE OF PP#844674E (0.55MI E/O BOBS GAP RD)	L 1399
LLANO ( 2012 )	3,814.695 1,162.723	RDBM MON IN WELL 115' N C/L VALYERMO RD & 0.6MI E/O 157TH ST E 25' S/O PP (#484676E) MKR 2' N/O MON (0.5MI W/O BOBS GAP RD)	L 1400
LLANO ( 2012 )	3,896.905 1,187.780	USGS MON IN NE COR ABUT OF BRIDGE 490 15' N & 15' W/O C/L INT VALYERMO RD & BOBS GAP RD MKD (LS 56 1929 RESET 1960)	L 1401
LLANO ( 2012 )	3,853.381 1,174.514	CS MON IN WELL 9" DN ON C/L BOBS GAP RD 1850' N/O VALYERMO RD 380' S/O RD TO MOUNTAIN BROOK RANCH & 90' S/O PP (#656056) MKD (SEC COR 8,9,17,16, T4N,R9W)	L 1404
LLANO ( 2012 )	3,800.292 1,158.332	RDBM MON IN WELL 7" DN 60' E/O C/L BOBS GAP RD & 0.87MI N/O VALYERMO RD 66' S/O C/L DIRT DR TO FARM HSE MRK POST 2' E/O MON	L 1405
LLANO ( 2012 )	3,811.098 1,161.626	RDBM MON IN WELL 33' W/O C/L BOBS GAP RD & 0.87MI N/O VALYERMO RD 105' N/O C/L DIRT RD TO FARM HSE MKR POST 2' W/O MON	L 1406
LLANO ( 2012 )	4,046.020 1,233.231	RDBM MON IN WELL 40' S/O C/L BOBS GAP RD & 36' W/O C/L PANORAMA RD (PVT) MKR POST 2' S/O MON	L 1409
LLANO ( 2012 )	4,017.998 1,224.689	RDBM TAG IN SE COR OF CONC BOX INLET @ CULV # 2.33 20' N C/L BOBS GAP RD & 2.2MI NE VALYERMO RD	L 1410
LLANO ( 2012 )	3,913.627 1,192.877	RDBM TAG 4' N/O S END ROCK WALL 18' E/O C/L BOBS GAP RD & 1.86MI SE/O 165TH ST E	L 1411
LLANO ( 2012 )	3,906.522 1,190.711	RDBM TAG 177' N/O S END ROCK WALL (NR S END GUARD RAIL) 18' E/O C/L BOBS GAP RD & 1.86MI SE/O 165TH ST E	L 1412

QUAD YEAR	ELEV FOOT/METER	DESCRIPTION	BM NUMBER
LLANO (2012)	3,771.314 1,149.500	RDBM MON IN WELL 40' S/O C/L BOBS GAP RD & 1.2MI SE/O 165TH ST E MKR POST 2' S/O MON	L 1413
LLANO (2012)	3,763.841 1,147.222	RDBM MON IN WELL 26' N/O C/L BOBS GAP RD & 1.2MI SE/O 165TH ST E MKR POST 2' N/O MON	L 1414
LLANO (2012)	3,505.264 1,068.408	BN IN CONC BASE STONE PILLAR @ FORMER ENT TO CRYSTALAIR COUNTRY CLUB 8' W/O C/L PROD 165TH ST E & 141' SW/O C/L BOBS GAP RD	L 1417
LLANO (2012)	3,329.060 1,014.701	RDBM MON IN WELL 28' E C/L 165TH ST E & 194' S C/L AVE W-8 3' NE/O PP #4143398E MKR 2' E MON	L 1421
LLANO (2012)	3,320.107 1,011.972	CS MON IN WELL @ C/L INT 165TH ST E & AVE W-8 MKD (1/4 SEC COR 29,28,T5N,R9W) DN 1.5'	L 1422
LLANO (2012)	3,237.990 986.942	CS MON IN WELL @ C/L INT 165TH ST E & AVE W (PROP) 0.5MI S/O PEARBLOSSOM HWY MKD (T5N,R9W, SEC COR 20,21,29,28)	L 1423
LLANO (2012)	3,235.695 986.243	RDBM TAG IN NE COR OF CONC SLAB IN FRONT OF OLD HSE FOUNDATION 80' W C/L 165TH ST E & 135' N/O C/L AVE W (PROP) 0.5MI S/O PEARBLOSSOM HWY	L 1424
LLANO (2012)	3,875.482 1,181.250	USC&GS MON 0.5' DN @ SE COR LARGO VISTA RD & FORT TEJON RD 36' S & 59' E C/L INT MKD (LARGO 1940) MKR POST 1.5' E/O MON	L 1932
LLANO (2012)	3,790.614 1,155.383	USGS MON 6" UP 69' W LARGO VISTA RD 17' N/O OLD FT TEJON RD 0.3MI N/O FT TEJON RD MKD (LS 65 1929) MKR POST 1' W/O MON	L 1934
LLANO (2012)	3,743.309 1,140.964	RDBM MON IN WELL 8" DN @ SW COR LARGO VISTA RD & FUTURE AVE X-8 46' S & 66' W/O APPROX C/L INT 100' S/O MI MKR #24.48 MKD (BM 2-1963) MKR POST 2' W/O MON	L 1936
LLANO (2012)	3,615.837 1,102.110	RDBM MON IN WELL 8" DN @ SW COR LARGO VISTA RD & FUTURE AVE X 30' S & 50' W/O APPROX C/L INT MKR SIGN 2' S/O MON	L 1939
BASELINE (2010)	2,578.629 785.968	CSBM MON 1' DN @ NE COR AVE M & 150TH ST E 53' N & 33' E/O C/L INT MKD (BM 115-11 1961) MKR POST 2' W/O MON	L 2049
BASELINE (2010)	2,578.694 785.988	CS MON IN WELL @ C/L INT AVE M & FUT 155TH ST E MKD (1/4 SEC COR 32,5,T6N,T7N,R9W)	L 2050
BASELINE (2010)	2,582.313 787.091	2" IP W/NAIL 8" UP @ NE COR AVE M & FUT 155TH ST E 50' N & 50' E/O C/L INT (USE E EDGE)	L 2051
BASELINE (2010)	2,579.734 786.305	2" IP W/NAIL 8" UP @ SW COR AVE M & FUT 160TH ST E 50' S & 43' W/O C/L INT (USE W EDGE), 2' S/O MKR POST	L 2052
BASELINE (2010)	2,580.816 786.635	2" IP W/NAIL 8" UP @ NE COR AVE M & FUT 160TH ST E 50' N & 50' E/O C/L INT (USE E EDGE)	L 2054
BASELINE (2010)	2,581.070 786.713	2" IP W/NAIL FLUSH @ SW COR AVE M & FUT 165TH ST E 50' S & 50' W/O C/L INT	L 2055
BASELINE (2010)	2,916.375 888.914	RDBM TAG N CB 4' E/O BCR @ NE COR 87TH ST E & PEARBLOSSOM HWY 79' E & 40' N/O C/L INT	L 2666

QUAD YEAR	ELEV FOOT/METER	DESCRIPTION	BM NUMBER
BASELINE (2010)	2,935.597 894.773	RDBM TAG IN CTR HDWL 24' S/O C/L PEARBLOSSOM HWY & 0.5MI E/O 87TH ST E 48'M E/O PP #543955H	L 2667
LLANO (2012)	2,933.875 894.248	RDBM MON IN WELL 8" DN @ NE COR 116TH ST E & AVE U-8 30' E & 600' N/O C/L INT 5' N/O PP #1062441E MKR POST 2' N/O MON	L 2673
LLANO (2012)	3,201.812 975.915	USC&GS MON 6" E/O W EDGE HDWL @ SE COR 175TH ST E & PEARBLOSSOM HWY 30' S & 50' E/O C/L INT MKD (Z 1045 1960)	L 2685
LLANO (2012)	3,285.625 1,001.462	USC&GS TRI MON 6" UP 46' S & 121' E/O C/L INT PEARBLOSSOM HWY & AVE W 6' S/O PP #1404305E MKD (CURVE 1964) MKR POST 2' E/O MON	L 2687
LLANO (2012)	3,284.475 1,001.111	USC&GS REF MON 6" E/O W END HDWL OF CULV 37'M S & 230' E/O C/L INT PEARBLOSSOM HWY & AVE W MKD (CURVE NO 1 1964)	L 2688
LLANO (2012)	3,387.518 1,032.519	RDBM MON IN WELL @ NW COR PALMDALE RD & 233RD ST E 35' W & 220' N/O C/L INT 3' W PP #777984E	L 2692
LLANO (2012)	2,928.411 892.582	CS MON IN WELL 1.5' DN @ C/L INT PALMDALE BLVD & 235TH ST E MKD (CTR SEC 27,T6N,R8W,RE 5869)	L 2695
LLANO (2012)	2,688.780 819.543	CSBM MON 6" UP 40' E/O 180TH ST E & NR LAKE LOS ANGELES AVE C/L PROD MKD (BM 114-7 1961)	L 2696
LLANO (2012)	2,727.234 831.263	CSBM MON 6" UP @ SE COR 180TH ST E & FUT AVE P-8 36' E & 28' S/O C/L INT MKD (BM 114-5 1961) MKR POST 2' W/O MON	L 2697
LLANO (2012)	2,749.566 838.070	CSBM MON 6" UP @ NW COR 180TH ST E & AVE Q 50' N & 36' W/O C/L INT MKD (BM 114-4 1961) MKR POST 2' E/O MON	L 2698
LLANO (2012)	2,774.036 845.529	CSBM MON FL @ NW COR PALMDALE BLVD & 180TH ST E 51' N & 54' W/O C/L INT MKD (BM 114-3 1961) MKR POST 2' S/O MON	L 2699
BASELINE (2010)	2,591.291 789.828	CSBM MON FL @ NE COR 150TH ST E & FUT AVE M-8 76' N & 34' E/O C/L INT MKD (BM 115-10 1961) MKR POST 2' E/O MON	L 2700
BASELINE (2010)	2,607.656 794.816	CSBM MON 6" UP @ NE COR AVE N & 150TH ST E 66' N & 30' E/O C/L INT MKD (BM 115-9 1961) MKR POST 2' E/O MON	L 2701
BASELINE (2010)	2,619.472 798.417	CSBM MON 6" UP @ NW COR 150TH ST E & FUT AVE N-8 190' N & 33' W/O C/L INT MKD (BM 115-8 1961) MKR POST 2' W/O MON	L 2702
BASELINE (2010)	2,651.134 808.068	CSBM MON 6" UP @ SW COR AVE O & 145TH ST E 100' S & 37' W/O C/L INT MKD (BM 115-6 1961) MKR POST 2' W/O MON	L 2704
LLANO (2012)	2,706.350 824.898	CSBM MON 6" UP @ NE COR 145TH ST E & FUT AVE O-8 120' N & 25' E/O C/L INT MKD (BM 115-5 1961) MKR POST 2' E/O MON	L 2705
LLANO (2012)	2,783.796 848.504	CSBM MON 6" UP 38' E/O C/L 145TH ST E & 456' N/O FUT AVE P-8 MKD (BM 115-3 1961) MKR POST 2' W/O MON	L 2707
LLANO (2012)	2,744.862 836.636	CSBM MON 6" UP @ NE COR AVE Q & 145TH ST E 75' N & 40' E/O C/L INT MKD (BM 115-2 1961) MKR POST 2' W/O MON	L 2708
LLANO (2012)	2,787.776 849.717	CSBM MON FLUSH @ SE COR 150TH ST E & AVE Q 30' E & 100' S/O C/L INT MKD (BM 115-1A 1966) MKR POST 2' S/O MON	L 2709

QUAD YEAR	ELEV FOOT/METER	DESCRIPTION	BM NUMBER
LLANO (2012)	2,775.923 846.104	CSBM MON 6" UP @ NE COR PALMDALE BLVD & 150 TH ST E 50' N & 25' E/O C/L INT MKD (BM 109-12 1961) MKR POST 2' S/O MON	L 2710
LLANO (2012)	2,784.418 848.693	CSBM MON 6" UP @ SW COR PALMDALE BL & 155TH ST E 30' S & 20' W/O C/L INT MKD (BM 109-1 1961)	L 2720
LLANO (2012)	2,780.609 847.532	RDBM MON IN WELL 6" DN 8' S/O PP #1218033E 36' S/O C/L PALMDALE BLVD ON C/L FUR 185TH ST E	L 2724
LLANO (2012)	2,802.461 854.193	2" IP & CE TAG FLUSH @ NE COR PALMDALE BLVD & FUT 190TH ST E 50' N & 50' E/O C/L INT MKR POST 1' N/O MON	L 2725
LLANO (2012)	2,815.118 858.051	RDBM MON 8" DN @ SE COR PALMDALE BLVD & FUT 195TH ST E 6' S/O PP #1218058E 40' S & 45' E/O C/L INT MKD (1961) MKR POST 2' S/O MON	L 2726
LLANO (2012)	2,824.935 861.043	2" IP & CE TAG 4" DN @ NE COR PALMDALE BLVD & 200TH ST E 50' N & 50' M E/O C/L INT MKR POST 1' N/O MON	L 2727
LLANO (2012)	2,872.074 875.411	RDBM MON IN WELL FLUSH @ SE COR PALMDALE BLVD & FUT 215TH ST E 11' S/O PP #1218108E 35' S & 151' E/O C/L INT MKR 2' S/O MON	L 2730
LLANO (2012)	2,904.195 885.201	2" IP & NAIL @ NE COR PALMDALE BLVD & FUT 220TH ST E 50' N & 50' E/O C/L INT 110' W/O PP #1218120E MRK POST 1' S/O MON	L 2731
LLANO (2012)	2,897.269 883.090	RDBM MON IN WELL 6" DN @ SE COR PALMDALE BL & FUT 225TH ST E 35' S & 43' E/O C/L INT 6' S/O PP #1218132E MKR POST 3' S/O MON	L 2732
LLANO (2012)	3,544.421 1,080.343	USC&GS MON IN SE WINGWALL BRIDGE B980 18' E/L C/L FT TEJON RD & 250' N/O C/L LONGVIEW RD TO S MKD (RADELL 1964)	L 2735
LLANO (2012)	3,841.822 1,170.991	CSBM BM MON 43' S/O C/L PALLETT CREEK RD & 0.2MI E/O LONGVIEW RD MKD (CR-10 RE 5869) MKR 2' E 66' E/O PP #2293983E	L 2736
LLANO (2012)	3,772.444 1,149.844	CSBM MON 4" UP 36' S/O C/L PALLETT CREEK RD & 0.75MI E/O LONGVIEW RD MKD (CR-11 RE 5869) MKR POST 2' E/O MON 15' SE/O PP#1031067H & 110' E/O MI MRK #0.76	L 2737
LLANO (2012)	3,715.044 1,132.349	L&T IN NW COR CONC SLAB 25' S/O C/L VALYERMO RD & 405' E/O 157TH ST E	L 2739
LLANO (2012)	3,896.852 1,187.764	PK NAIL IN SW COR OF BRIDGE 125' W/O C/L BOBS GAP RD & 15' S/O C/L VALYERMO RD	L 2740
LLANO (2012)	3,112.786 948.780	CSBM MON 6" UP @ SW COR 165TH ST E & PROP AVE V 210' S & 35' W/O C/L INT MKD (BM 109-24 1961) MKR POST 2' W/O MON	L 2741
LLANO (2012)	3,049.966 929.632	CSBM MON 6" UP @ NW COR 165TH ST E & PROP AVE U-8 121' N & 37' W/O C/L INT MKD (BM 109-23 1961) 84' S'LY OF PP#1403638E MKR POST 2' E/O MON	L 2742
LLANO (2012)	3,004.829 915.875	CSBM MON 6" UP @ SW COR 165TH ST E & PROP AVE U 37' W & 46' S/O C/L INT MKD (BM 109-22 1961) MKR POST 2' E/O MON	L 2743
LLANO (2012)	2,957.570 901.470	CSBM MON 6" UP @ NW COR 165TH ST E & AVE T-8 135' N & 40' W/O C/L INT MKD (BM 109-21 1961) MKR POST 2' W/O MON	L 2744
LLANO (2012)	2,892.079 881.508	CSBM MON FLUSH @ NE COR 165TH ST E & PROP AVE S-8 43' E & 164' N/O C/L INT MKD (BM 109-19 1961) MKR POST 2' E/O MON	L 2746

QUAD YEAR	ELEV FOOT/METER	DESCRIPTION	BM NUMBER
LLANO ( 2012 )	2,839.898 865.604	CSBM MON 6" UP @ SE COR 165TH ST E & AVE R-8 226' S & 28' E/O C/L INT MKD (BM 109-17 1961) MKR POST 2' E/O MON	L 2748
BASELINE ( 2010 )	2,817.501 858.777	RDBM TAG IN CONC FENCE FTG @ NW COR PUMPING STA NE COR 87TH ST E & AVE T-8 125' N & 36' E/O C/L	L 2751
BASELINE ( 2010 )	2,715.234 827.606	RDBM TAG IN LT STD @ NE COR 90TH ST E & AVE S 180'M N & 50'M E/O C/L INT	L 2754
LLANO ( 2012 )	3,378.998 1,029.922	CS MON IN WELL 10" DN @ C/L INT LONGVIEW RD & AVE X MKD (1/4 COR 26,35,T5N,R10W,RE5869)	L 2766
BASELINE ( 2010 )	3,364.129 1,025.390	CS MON IN WELL 14" DN @ C/L 106TH ST E & 0.50MI S/O FT TEJON RD MKD (28,29,32,33,T5N,R10W)	L 2813
LLANO ( 2012 )	3,508.979 1,069.540	USGS MON FLUSH 30' E/O C/L 106TH ST E & 1.1MI S/O FT TEJON RD 1' N/O PP (#1185704E) MKD (R99 1929)	L 2815
LLANO ( 2012 )	3,523.726 1,074.035	USC&GS MON 6" UP 18' E/O C/L 106TH ST E & 1.15MI S/O FT TEJON RD 2' S/O PP #1185703E MKD (RIFT 1964) MKR POST 2' SE/O MON	L 2816
LLANO ( 2012 )	3,673.075 1,119.557	RDBM MON IN WELL 8" DN 60' E/O C/L 106TH ST E & 153' N/O AVE K-15, 5' S/O PP 617933H, MKR POST 5' E/O MON	L 2817
LLANO ( 2012 )	3,682.379 1,122.393	RDBM MON IN WELL FLUSH 55' E/O C/L 106TH ST E & 25' N/O AVE X-15, 5' N/O PP (NO#) MKR POST 2' W/O MON	L 2818
LLANO ( 2012 )	3,931.898 1,198.446	RDBM MON 27' E C/L 106TH ST E & 30' N/O C/L ROSS RD (DIRT PVT) @ MAIL BOX #10735 MKR POST 2' E/O MON	L 2819
LLANO ( 2012 )	4,116.287 1,254.648	RDBM MON IN WELL 8" DN 33' E/O C/L 106TH ST E & 72' S/O C/L RAINBOW ACRES RD (PVT) 6' S/O PP (#555680H) MKR POST 2' E/O MON	L 2821
LLANO ( 2012 )	4,130.339 1,258.931	RDBM MON IN WELL 8" DN 36' E/O C/L 106TH ST E 276' S/O C/L RAINBOW ACRES RD (PVT) 5' S/O PP #699206E MKR POST 2' E/O MON	L 2822
LLANO ( 2012 )	4,285.653 1,306.271	2" IP W/CONC PLUG & CE TAG 6" UP @ NW COR CIMA MESA RD & 106TH ST E 50' N & 50' W/O C/L INT	L 2823
LLANO ( 2012 )	4,374.503 1,333.353	L&T IN SW COR CONC DRWY TO HSE #29806 JUNIPER HILLS RD 10' W/O SW COR OF GARAGE 28' E/O C/L 106TH ST E	L 2825
LLANO ( 2012 )	4,589.357 1,398.840	RDBM MON IN WELL 6" DN 30' E/O C/L JUNIPER HILLS RD & 0.65MI SE/O 106TH ST E 6' N/O PP #PS 1545 / 699067E MKD (BM 961) MKR POST 2' W/O MON	L 2827
LLANO ( 2012 )	4,680.829 1,426.721	RDBM TAG IN CONC BASE WATER TANK 24' S/O C/L JUNIPER HILLS RD & 240' E/O C/L DR TO HSE #11628	L 2830
LLANO ( 2012 )	4,689.589 1,429.391	RDBM TAG @ NE COR CONC STANDPIPE BASE 25' N/O C/L JUNIPER HILLS RD & 583' W/O C/L 121ST E 17' NW/O PP #1028228H	L 2831
LLANO ( 2012 )	4,693.119 1,430.467	RDBM TAG IN CONC FTG OF W GATEPOST HSE #11882 & #11900 JUNIPER HILLS RD 30' S C/L & 580' W/O C/L 121ST ST E 70' SE/O PP#1028228H	L 2832
LLANO ( 2012 )	4,514.058 1,375.889	RDBM MON IN WELL 8" DN 46' N/O C/L JUNIPER HILLS RD & 360' W/O C/L 125TH ST E 5' W/O PP (#699032E) MKR POST 2' N/O MON	L 2833

QUAD YEAR	ELEV FOOT/METER	DESCRIPTION	BM NUMBER
LLANO (2012)	4,484.146 1,366.772	RDBM MON IN WELL 6" DN 46' N/O C/L JUNIPER HILLS RD & 18' W/O C/L 125TH ST E 5' W/O PP (#699031E) MKR POST 2' N/O MON	L 2834
LLANO (2012)	4,391.352 1,338.488	RDBM MON IN WELL 6" DN 144' W & 40' N/O C/L INT JUNIPER HILLS RD & LONGVIEW RD 5' E/O PP #699023E MKR POST 2' N/O MON	L 2835
LLANO (2012)	4,395.124 1,339.638	RDBM TAG IN CONC FTG OF E GATEPOST 30' E/O & 13' S/O PI OF CURVE JUNIPER HILLS RD & LONGVIEW RD	L 2836
LLANO (2012)	3,151.583 960.605	L&T IN N CB 1' E/O BCR @ NE COR AVE V-14 & 121ST ST E 57' E & 20' N/O C/L INT MKD (BM)	L 2839
LLANO (2012)	3,133.287 955.029	RDBM TAG IN N CB 3' W/O END @ NW COR AVE V-14 & 123RD ST E 154' W & 20' N/O C/L INT	L 2840
LLANO (2012)	2,792.084 851.030	2" IP WITH CE TAG 4" UP @ SE COR 116TH ST E & AVE S-8 87' S & 40' E/O C/L INT 25' N/O PP #618599H (HIGH SIDE OF PIPE)	L 2862
LLANO (2012)	2,842.880 866.512	2" IP WITH CE TAG 4" UP @ C/L PROD FUT AVE T-8 50' W/O C/L 116TH ST E 55' N/O PP (#1062312E) 0.20MI S/O SPRR TRACKS	L 2866
LLANO (2012)	2,890.640 881.070	CS MON IN WELL 8" DN @ C/L INT 116TH ST E & AVE U MKD (9,10,16,15,R10W,T5N)	L 2868
BASELINE (2010)	2,681.348 817.277	CS MON 4" DN @ C/L INT AVE M & 200TH ST E MKD (SEC COR 36,31,1,6,T7N,R9W,R8W)	L 3186
BASELINE (2010)	2,682.397 817.597	2" IP W/CE TAG @ SW COR AVE M & 200TH ST E 46' S & 52' W/O C/L INT (S EDGE)	L 3187
BASELINE (2010)	2,668.790 813.450	1.5" IP W/NAIL 4" DN @ C/L INT AVE M & FUT 195TH ST E	L 3188
BASELINE (2010)	2,668.966 813.503	CHIS X ON N EDGE 1.5" IP W/CE TAG 6" UP ON C/L PROD FUT 195TH ST E & 50' S/O C/L AVE M	L 3189
BASELINE (2010)	2,653.483 808.784	CS MON 6" DN @ C/L INT FUT AVE M & 190TH ST E MKD (SEC COR 35,36,2,1,T6N,T7N,R9W)	L 3190
BASELINE (2010)	2,654.372 809.055	CHIS X ON W EDGE 2" IP W/CE TAG 6" UP @ NW COR FUT AVE M & 190TH ST E 50' N & 50' W/O C/L INT	L 3191
BASELINE (2010)	2,628.303 801.109	2" IP W/NAIL 6" DN @ C/L INT FUT AVE M & FUT 185TH ST E	L 3192
BASELINE (2010)	2,631.857 802.192	CHIS X ON S EDGE 2" IP W/CE TAG 4" UP ON C/L PROD FUT 185TH ST E & 50' S/O C/L FUT AVE M	L 3193
BASELINE (2010)	2,596.917 791.543	2" IP W/CE TAG 6" UP ON C/L FUT 175TH ST E & 50' S/O C/L AVE M	L 3195
BASELINE (2010)	2,588.720 789.044	2" IP W/CS TAG @ SE COR AVE M & 170TH ST E 50' S & 50' E/O C/L INT MKR POST 2' W/O MON	L 3342
BASELINE (2010)	2,701.982 823.567	1.5" IP W/NAIL 6" DN @ C/L INT FUT AVE M & 205TH ST E	L 3393

QUAD YEAR	ELEV FOOT/METER	DESCRIPTION	BM NUMBER
BASELINE ( 2010 )	2,703.192 823.935	2" IP W/CE TAG 6" UP ON C/L 205TH ST E & 50' S/O C/L FUT AVE M	L 3394
BASELINE ( 2010 )	2,721.595 829.545	2" IP W/CE TAG 8" UP @ SW COR FUT AVE M & 210TH ST E 50' S & 50' W/O C/L INT	L 3395
BASELINE ( 2010 )	2,720.223 829.126	CS MON 1' DN @ C/L INT FUT AVE M & 210TH ST E MKD (SEC COR 31,32,6,5,T6N,R8W)	L 3396
BASELINE ( 2010 )	2,735.173 833.683	2" IP W/CE TAG 8" UP @ SW COR FUT AVE M & 215TH ST E 50' S & 50' W/O C/L INT	L 3397
BASELINE ( 2010 )	2,734.681 833.533	1.5" IP W/NAIL 1' DN @ C/L INT FUT AVE M & 215TH ST E	L 3398
BASELINE ( 2010 )	2,757.908 840.613	2" IP W/CE TAG 6" UP @ NE COR FUT AVE M & 220TH ST E 50' N & 50' E/O C/L INT	L 3400
BASELINE ( 2010 )	2,795.648 852.116	2" IP W/CE TAG 8" UP @ SW COR FUT AVE M & 230TH ST E 50' S & 50' W/O C/L INT MKR POST 1' W/O MON	L 3403
BASELINE ( 2010 )	2,794.755 851.844	CS MON 6" DN @ C/L INT FUT AVE M & 230TH ST E MKD (SEC COR 33,34,3,4,T6N,R8W) MKR POST 1' S/O MON	L 3404
BASELINE ( 2010 )	2,832.027 863.204	2" IP W/CE TAG 10" UP @ SW COR FUT AVE M & 235TH ST E 50' S & 50' W/O C/L INT MKR POST 1' S/O MON	L 3405
BASELINE ( 2010 )	2,849.696 868.590	2" IP W/LACS TAG 6" UP @ SW COR 240TH ST E & FUT AVE M 50' S & 50' E/O C/L INT MKR POST 1' E/O MON	L 3407
BASELINE ( 2010 )	2,848.585 868.251	CS MON IN WELL 1' DN @ C/L INT FUT AVE M & 240TH ST E MKD (SEC COR 2,3,34,35,T6N,R8W)	L 3408
LLANO ( 2012 )	2,682.722 817.696	CS MON 2" UP, SW COR FUT 200TH ST E & FUT AVE M-8. 15' S & 40' W/CL INT MKD BM 12-26-1966, MKR PIPE 2' NORTH	L 3535
LLANO ( 2012 )	2,678.200 816.318	CS MON 12" DN, CL INT FUT AVE N & 200TH ST E MKD (SEC COR 1-6-7-12 T6N R8W R9W) MKR PIPE 2' NORTH	L 3536
LLANO ( 2012 )	2,696.758 821.974	CS MON 10" DN, CL INT FUT AVE N-8 & 200TH ST E MKD (1/4 COR 7-12 T6N R8W R9W RE 5869) MKR PIPE 2' NORTH	L 3537
LLANO ( 2012 )	2,964.506 903.584	CS MON IN WELL 14" DN @ C/L INT 240TH ST E & FUTURE AVE N MKD (2,3,10,11,T6N,R8W)	L 3539
LLANO ( 2012 )	2,908.151 886.407	CS MON 14" DN @ C/L INT FUT 240TH ST E & AVE N-8 MKD (1/4 COR 10,11,T6N,R8W)	L 3540
LLANO ( 2012 )	2,870.759 875.010	CS MON IN WELL 1' DN @ C/L INT 240TH ST E & AVE P MKD (15,14,22,23,T6N,R8W,RE 5869)	L 3561
BASELINE ( 2010 )	2,631.595 802.113	CS BM MON FL 57' E & 27' N/O C/L INT AVE Q & 90TH ST E MKD (BM 107-10 1966)	L 4081
LLANO ( 2012 )	3,049.231 929.408	RDBM TAG IN CONC WK NR NW COR OF BLDG 69' S & 50' E/O C/L INT PEARBLOSSOM HWY & 123RD ST E	L 4085
LLANO ( 2012 )	3,408.435 1,038.894	2" IP W/CONC PLUG & N 6" UP 50' N & 48' W/O C/L INT PEARBLOSSOM HWY & LARGO VISTA RD 6' N/O PP #1373751E MKR POST 2' N/O MON	L 4087



QUAD YEAR	ELEV FOOT/METER	DESCRIPTION	BM NUMBER
LLANO (2012)	3,154.615 961.530	RDBM TAG IN NE LEG OF EDISON TOWER #23-4 30' W/O C/L 235TH ST E 0.20MI N/O AVE U NLY OF TWO TOWERS	L 4089
LLANO (2012)	2,889.930 880.853	CHIS X ON N EDGE OF 2" IP/CONC PLUG & CE TAG 5" UP 15M S & 50' W/O C/L INT 240TH ST E & AVE P-8 (DIRT) MKR POST 1' W/O MON	L 4127
LLANO (2012)	2,847.849 868.027	CSBM MON FL 36' N/O C/L AVE O & 394' W/O C/L 240TH ST E 6' E/O PP #734996E MKD (BM 106- 71A 1972) MKR POST 2' S/O MON	L 4128
LLANO (2012)	2,908.713 886.578	CSBM MON 5" UP 59'E & 59' S/O C/L INT 240TH ST E & AVE N-8 (DIRT) MKD (BM 124-57A 1972) MKR POST 2' W/O MON (BUTTON GONE)	L 4130
LLANO (2012)	2,855.173 870.259	2" IP W/CONC PLUG & NAIL 47' W & 50' N/O C/L INT PALMDALE BLVD & 210TH ST E MKR POST 1' N/O MON (4' E/O & 80' N/O PP#1218095E)	L 4133
LLANO (2012)	2,666.922 812.880	1.5" IP W/CONC PLUG & BRAD FL 50' N & 50'M W/O C/L INT 180TH ST E & AVE O PP #1875925E 20' E/O MON	L 4135
LLANO (2012)	2,686.260 818.775	2" IP W/CONC PLUG & CE TAG 1' UP 50' S C/L AVE O & 50' E/O C/L INT 190TH ST E MKR 2' N/O MON	L 4137
LLANO (2012)	2,951.223 899.535	STATE OF CAL DEPT OF WATER RESOURCES BM MON IN TC 65' N/O CTR OF BRIDGE #B1638 13' W/O C/L 116TH ST E & 348' N/O AVE U-8 (MRK'D 359.9, 1971)	L 4141
LLANO (2012)	2,892.659 881.685	RDBM TAG IN NE COR CONC SLAB @ FIRE HYDRANT 76' W & 44'M S/O C/L INT 116TH ST E & AVE U	L 4143
BASELINE (2010)	3,268.069 996.110	CS MON IN WELL 4" DN @ C/L INT FT TEJON RD & 106TH ST E MKD (1/4 COR 29,28,R10W,T5N,RE 7078)	L 4144
LLANO (2012)	3,875.716 1,181.322	CE TAG IN ROCK & CONC WINGWALL 33' S & 46' W/O C/L LARGO VISTA RD & FT TEJON RD @ MKR #25.00	L 4153
LLANO (2012)	3,612.223 1,101.009	CS MON IN WELL 1.5' DN @ C/L INT LARGO VISTA RD & AVE X (PROP) 1.0MI S/O PEARBLOSSOM HWY MKD (SEC COR 25,36,30,31,R8W,R9W,T5N)	L 4154
LLANO (2012)	3,488.543 1,063.311	USC&GS MON IN CONC WALK @ SE COR BRIDGE #B1643 OVER THE CALIF AQUEDUCT 16' E/O C/L LARGO VISTA RD & 0.50MI S/O PEARBLOSSOM HWY MKD (S 1220 1971)	L 4155
LLANO (2012)	3,485.659 1,062.432	DWR MON IN CONC WALK @ NW COR BRIDGE #1643 OVER THE CALIF AQUEDUCT 15'M W/O C/L LARGO VISTA RD & 0.50MI S PEARBLOSSOM HWY MKD (371.7A RESET 1971)	L 4156
LLANO (2012)	3,434.679 1,046.893	BR CAP MON 30' W/O C/L LONGVIEW RD & 20' N/O C/L AC RD TO AQUEDUCT 0.30MI S/O AVE X-3 MKD M-6 35 1971) MKR POST 2' SE/O MON	L 4159
LLANO (2012)	3,508.572 1,069.416	2" IP W/CONC PLUG & CE TAG FLUSH 50' N & 50' W/O C/L INT LONGVIEW RD TO N & FT TEJON RD MKR POST 1' S/O MON	L 4160
LLANO (2012)	3,557.249 1,084.253	RDBM MON IN WELL 8" DN 64M S & 38'M W/O C/L INT LONGVIEW RD TO S & FT TEJON RD MKD (1960) MKR POST 2' W/O MON	L 4162
LLANO (2012)	3,150.779 960.360	L&T IN E CB 1' N/O BCR @ NE COR 121ST ST E & AVE V-14 46' N & 30' E/O C/L INT MKD (73)	L 4163

QUAD YEAR	ELEV FOOT/METER	DESCRIPTION	BM NUMBER
LLANO (2012)	3,492.183 1,064.421	DWR BM MON IN CONC WALK @ NW END OF BRIDGE #B1639 OVER AQUEDUCT 15' W C/L 121ST ST E & 0.15MI N/O FT TEJON RD MKD (362 6A RESET 1971)	L 4164
LLANO (2012)	3,491.753 1,064.290	SPK IN CONC CB @ SE COR BRIDGE #B1639 OVER CAL AQUEDUCT 15' E/O C/L 121ST ST E & 0.15MI N/O FT TEJON RD	L 4165
BASELINE (2010)	2,772.542 845.073	2" IP W/CONC PLUG & 45 CARTRIDGE 8" UP 50' S & 50' E/O C/L INT AVE O & FUT 135TH ST E 36' NE/O PP #1786912E	L 4167
BASELINE (2010)	2,745.638 836.873	2" IP W/CONC PLUG & CE TAG 4" DN 50' S & 50' E/O C/L INT AVE O & FUT 125TH ST E	L 4170
BASELINE (2010)	2,674.887 815.308	2" IP W/CONC PLUG FLUSH 50' N & 50' E/O C/L INT AVE O & FUT 120TH ST E MKR 1' N/O MON	L 4172
BASELINE (2010)	2,598.002 791.873	1.5" IP W/CONC PLUG & BRAD FL 50'M N & 50' E/O C/L INT AVE O & 105TH ST E CHIS X ON W EDGE MKR POST 1' N/O MON	L 4176
BASELINE (2010)	2,599.527 792.338	1.5" IP W/CONC PLUG & BRAD FL 50' S & 50'M W/O C/L INT AVE O & 105TH ST E 43' E/O PP #2287760E	L 4177
BASELINE (2010)	2,590.554 789.603	2" IP W/CONC PLUG & BRAD 40' N & 40' W/O C/L INT AVE O & 100TH ST E 20' W/O PP #2145389E	L 4179
LLANO (2012)	2,669.452 813.651	L&T IN N CB 1' W/O BCR @ NW COR PALMDALE BLVD & 100TH ST E 43' N & 76' W/O C/L INT	L 4849
LLANO (2012)	2,765.230 842.845	RDBM TAG 2' E/O END OF CONC STRIP 0.45MI E/O 140TH ST E & 13' N/O PALMDALE BLVD 15' S/O PP #1190834E (390' W/O APPROX C/L BIG ROCK CREEK E FORK NR C/L 145TH) ST E)	L 4850
LLANO (2012)	2,855.298 870.297	CS MON IN WELL 16" DN @ C/L INT PALMDALE BLVD & 210TH ST E MKD (1/4 SEC COR 29,30,T6N,R8W,RE 2177)	L 4851
LLANO (2012)	3,488.107 1,063.178	L&T IN W CB 8' S/O BCR @ SW COR CRYSTALAIR DR & 165TH ST E 40' W & 69' S/O C/L INT	L 4854
LLANO (2012)	3,055.283 931.253	L&T IN W CB 1' S/O BCR @ SW COR PEARBLOSSOM HWY & LONGVIEW RD 43' W & 79' S/O C/L INT	L 4855
LLANO (2012)	2,705.892 824.758	RDBM TAG CTR OF N EDGE WATER DIST VAULT 76' N & 26' W/O C/L INT 110TH ST E & AVE R	L 4856
LLANO (2012)	2,765.493 842.925	RDBM MON IN WELL @ NW COR AVE S & 116TH ST E 50'M N & 46' W/O INT 6' N/O PP #4118684E MKR POST 2' N/O MON	L 4857
LLANO (2012)	2,766.260 843.159	2" IP W/CONC PLUG & CE TAG 6" UP @ NE COR AVE S & 116TH ST E 62' N & 40' E/O INT TRAV RDS (HIGH SIDE PIPE CHIS X)	L 4858
LLANO (2012)	2,790.898 850.668	CS MON 12" DN 116TH ST E & AVE S-8 MKD (1/4COR 4,8,T5N,R10W) 87' S/O C/L AVE S-8 ON C/L 116TH ST E	L 4859
LLANO (2012)	2,814.615 857.897	RDBM MON IN WELL @ NW COR 116TH ST E & AVE T 50' N & 80' W/O C/L INT 10' N/O PP #1121798E MKR POST 2' N/O MON	L 4860
LLANO (2012)	3,287.241 1,001.954	RDBM MON IN WELL 8" DN 0.50MI E/O 106TH ST E & 59' S/O C/L FT TEJON RD 69' W/O MI MKR #3.35 MKR POST 2' N/O MON	L 4862

QUAD YEAR	ELEV FOOT/METER	DESCRIPTION	BM NUMBER
LLANO (2012)	3,071.267 936.125	RDBM MON IN WELL 44' E/O C/L 235TH ST E 1.2MI N/O AVE U S/O DIRT RD FR SE MKD (1982) MKR POST 1' S/O MON	L 4864
LLANO (2012)	2,935.880 894.859	RDBM MON IN WELL @ SE COR PALMDALE BLVD & 240TH ST E 30' S & 38' E/O C/L INT 6' E PP #1309785E MKD (1984)	L 4865
LLANO (2012)	2,913.335 887.987	2" IP W/CONC PLUG & LACS TAG @ SW COR 240TH ST E & AVE Q 50' S & 50' W/O C/L INT 28' S/O FENCE LINE MKR POST 1' W/O MON	L 4866
LLANO (2012)	2,855.371 870.320	2" IP W/CONC PLUG & LACS TAG 8" UP @ SE COR 240TH ST E & AVE O-8 50' S & 50' E/O C/L INT 160' S/O PP #735802E MKR POST 3' E/O MON	L 4867
LLANO (2012)	2,853.692 869.808	1.5" IP W/CONC PLUG & BRAD 1.5" DN IN WELL @ C/L INT 240TH ST E & AVE O-8 108' S PP #735802E	L 4868
LLANO (2012)	2,851.222 869.055	RDBM MON IN WELL @ SW COR 240TH ST E & AVE O 36' S & 45' W/O C/L INT MKD (1984) MKR POST 2' W/O MON	L 4869
LLANO (2012)	2,964.944 903.718	2" IP W/CONC PLUG & LACS TAG 3" UP @ SW COR 240TH ST E & AVE N 40' S & 40' W/O C/L INT MKR POST 1' W/O MON	L 4870
LLANO (2012)	2,910.896 887.244	2" IP W/CONC PLUG & LACS TAG 5" UP @ SE COR 240TH ST E & M-8 50' S & 50' E/O C/L INT (E EDGE) MKR POST 1' E/O MON	L 4871
LLANO (2012)	2,630.437 801.760	CS MON 1' DN, CL INT 180TH ST E & AVE N, 95' NE PP (NO#)	L 4873
LLANO (2012)	2,650.572 807.897	2" IP W/CONC PLUG & CS TAG 6" UP @ NW COR 180TH ST E & AVE N-8 50' N & 50' W/O C/L INT 4' SE/O FENCE LINE	L 4874
LLANO (2012)	2,682.484 817.624	2" IP W/CONC PLUG & LACS TAG 8" UP @ NE COR 200TH ST E & AVE N, 40' N & 40' E/O CL INT	L 4876
LLANO (2012)	2,697.561 822.219	2" IP W/CONC PLUG & LACS TAG 8" UP @ NW COR 200TH ST E & AVE N, 50' N & 50' W/O CL INT	L 4877
LLANO (2012)	2,654.145 808.986	RDBM TAG 1' W/O E END CONC BOX 269' E & 25' S/O C/L INT AVE O & 160TH ST E	L 4880
LLANO (2012)	2,643.279 805.674	CS TAG TOP BRIDGE RAILING @ SE COR BRIDGE #93 43' W & 20' S/O C/L INT AVE O & 165TH ST E	L 4881
LLANO (2012)	2,727.878 831.460	1.5" IP W/CONC PLUG & NAIL DN 1.5" IN WELL @ C/L INT AVE O & 205TH ST E 20' E/O DIRT RD TO S 46' SW/O PP #2003618	L 4884
LLANO (2012)	2,758.121 840.678	1.5" IP W/CONC PLUG & NAIL DN 1.5" IN WELL @ C/L INT AVE O & 215TH ST E (DIRT RD TO N) 102' W/O PP #734968E	L 4885
LLANO (2012)	2,772.101 844.939	2" IP W/CONC PLUG & NAIL 4" UP 50' W & 50' N C/L INT AVE O & 220TH ST E 85' W/O PP 734973E	L 4886
LLANO (2012)	2,789.240 850.163	2" IP W/PLUG & CS TAG 8" UP 50' S & 50' E/O C/L INT AVE O & 225TH ST E 180' W/O PP (#734980E)	L 4887
LLANO (2012)	2,804.171 854.714	2" IP W/CONC PLUG & LACS TAG 10" UP 50' S & 50' W/O C/L INT AVE O & 230TH ST E 222' W/O PP (#734985E)	L 4888

QUAD YEAR	ELEV FOOT/METER	DESCRIPTION	BM NUMBER
LLANO ( 2012 )	2,829.544 862.448	2" IP W/CONC PLUG & LACS TAG 10" UP 50' N & 50' E/O C/L INT AVE O & 235TH ST E 50' NE/O PP #734991E MKR POST 1' N/O MON	L 4889
BASELINE ( 2010 )	2,647.651 807.006	DPW BM TAG IN CB @ NW COR PALMDALE BL & 90TH ST E 131' W & 40' N/O C/L INT (2' W/O END CB)	L 4982
BASELINE ( 2010 )	2,917.362 889.215	CSBM MON IN E END C B 69' E/O BCR @ NE COR 87TH ST E & PEARBLOSSOM HWY MKD (BM 106-20A 1966 RE 5869)	L 5178
BASELINE ( 2010 )	2,781.850 847.910	DPW BM TAG IN E CB 11' S/O BCR @ SE COR AVE T & 87TH ST E	L 5179
BASELINE ( 2010 )	2,747.616 837.476	DPW BM TAG IN N END CONC HDWL 275' S & 24' W/O C/L INT 87TH ST E & AVE S-8 @ MI MKR #19.71	L 5180
BASELINE ( 2010 )	2,688.927 819.587	DPW BM TAG IN CB 1' S/O END @ SE COR 90TH ST E & AVE R-8 62' E & 31' S/O C/L INT	L 5181
BASELINE ( 2010 )	2,667.710 813.120	DPW BM TAG IN NW COR CONC DRWY HSE #9006 AVE R 40' S/O C/L & 137' E/O C/L 90TH ST E	L 5182
BASELINE ( 2010 )	2,619.965 798.568	DPW BM TAG IN TOP OF W SIDE CONC BREATHER PIPE @ SE COR AVE P-8 & 90TH ST E 18M E & 6M S/O C/L INT 26M E/O PP #1103851E	L 5183
BASELINE ( 2010 )	2,557.653 779.575	2" IP WITH DPW BM TAG FLUSH @ NE COR 90TH ST E & AVE N 76' E & 30' N/O C/L INT MKR POST 2' E/O MON	L 5185
BASELINE ( 2010 )	2,525.070 769.644	2" IP WITH DPW BM TAG FLUSH @ NW COR 90TH ST E & AVE M 56' W & 31' N/O C/L INT MKR POST 2' E/O MON	L 5186
BASELINE ( 2010 )	2,926.865 892.111	CAL-TRANS TAG IN N CB PEARBLOSSOM HWY 40' N/O C/L & 30' W/O C/L 89TH ST E	L 5524
BASELINE ( 2010 )	2,577.613 785.659	CS MON IN WELL 1.5' DN @ C/L INT 90TH ST E & AVE O	L 5528
LLANO ( 2012 )	2,815.750 858.243	DPW BM TAG IN W CONC HDWL @ SE COR 116TH ST E & AVE T 40' S & 33' E/O C/L INT	L 5824
LLANO ( 2012 )	3,036.333 925.477	1.5" IP W/CONC & BRAD @ SELY COR PEARBLOSSOM HWY & AVE V 67' E/O C/L AVE V & 57' S/O C/L MKR POST 1' N/O MON	L 5826
LLANO ( 2012 )	3,073.948 936.942	DPW BM TAG IN CONC ELEC BOX PAD @ NW COR 116TH ST E & PEARBLOSSOM HWY 125' N & 28' W/O C/L INT	L 5827
LLANO ( 2012 )	3,056.285 931.558	DPW BM TAG IN NW COR CONC F HYD PAD @ SE COR 121ST ST E & PEARBLOSSOM HWY 53' E & 38' S/O C/L INT	L 5829
LLANO ( 2012 )	3,048.741 929.259	DPW BM TAG 4' S SLY CF IN C B @ SW COR 123RD ST & PEARBLOSSOM HWY 46' S & 55' W/O C/L INT	L 5830
LLANO ( 2012 )	3,051.712 930.165	DPW BM TAG IN S CB @ E END C B SE COR 126TH ST E & PEARBLOSSOM HWY 43' S & 58' E/O C/L INT	L 5831
LLANO ( 2012 )	3,174.478 967.584	DPW BM TAG IN NE COR CONC SLAB @ SW COR 165TH ST E & PEARBLOSSOM HWY 30' W & 140' S/O C/L INT 8' S/O PP #661279H	L 5836

QUAD YEAR	ELEV FOOT/METER	DESCRIPTION	BM NUMBER
LLANO ( 2012 )	3,411.996 1,039.980	USC&GS MON 60' S C/L PEARBLOSSOM HWY & 0.35MI E/O 198TH ST E MKD (LARGO VISTA RS NO 1 1925) 0.26MI W/O LARGO VISTA RD MKR POST 3' N/O MON	L 5838
LLANO ( 2012 )	3,409.635 1,039.260	DPW BM TAG IN NW COR OF CONC ELEC BOX PAD @ SW COR PEARBLOSSOM HWY & LARGO VISTA RD 140' W & 50' S/O C/L INT 8' E/O TP STUB #60	L 5839
LLANO ( 2012 )	3,407.619 1,038.645	2" IP W/O CONC PLUG & DPW BM TAG 5' N CALL BOX #18.43 @ NE COR PALMDALE RD & 223RD ST 27' E & 37' N/O C/L INT	L 5840
LLANO ( 2012 )	3,165.369 964.807	L&T IN E END CONC HDWL 20' N/O C/L AVE U & 110' W/O C/L 235TH ST E @ MI MKR #23.49	L 5843
LLANO ( 2012 )	3,009.415 917.272	2" IP W/O CONC PLUG & DPW BM TAG FLUSH 59' W/O C/L 235TH ST E & 15' N/O C/L AVE S MKR POST 6" W/O MON	L 5844
LLANO ( 2012 )	2,979.104 908.034	2" IP W/CONC PLUG & DPW BM TAG @ NE COR 235TH ST E & AVE R-8 46' E & 22' N/O C/L INT 3' N/O ST SIGN POST	L 5845
LLANO ( 2012 )	2,951.579 899.644	2" IP W/CONC PLUG & CO ENG TAG @ SW COR 235TH ST E & AVE R (DIRT RD) 39' S & 72' W/O C/L INT MKR POST 2' W/O MON	L 5846
LLANO ( 2012 )	2,935.071 894.612	CS MON IN WELL 2' DN @ C/L INT PALMDALE BLVD & 240TH ST E MKD (1/4 COR 27,28,T6N,R8W,RE 7729)	L 5847
BASELINE ( 2010 )	2,776.132 846.168	2" IP W/DPW BM TAG 3" UP 30' N/O C/L AVE M (DIRT RD) NR 225TH ST E MKR POST 2' N/O MON	L 5848
BASELINE ( 2010 )	2,758.321 840.739	CS MON 4" UP @ NE COR AVE M & 220TH ST E 15' N & 40' E/O C/L INT MKD (ADOBE MTN B 13 RM 1 1972 RE 7078) MKR POST 2' NW/O MON	L 5849
BASELINE ( 2010 )	2,757.232 840.407	CS MON FLUSH @ NW COR AVE M & 220TH ST E 28' W & 47' N/O C/L INT MKD (ADOBE MTN B 13 RM 2 1972 RE 7078) MKR POST 2' SW/O MON	L 5850
BASELINE ( 2010 )	2,610.348 795.636	2" IP W/CE TAG @ NE COR AVE M & 180TH ST E 46' E & 23' N/O C/L INT	L 5851
BASELINE ( 2010 )	2,597.115 791.603	2" IP W/CS TAG 10" UP 50' N/O C/L AVE M ON C/L 175TH ST E MKR POST 5' S/O MON	L 5852
LLANO ( 2012 )	2,656.131 809.591	DPW BM TAG IN E CB 20' S/O BCR @ SE COR 95TH ST E & PALMDALE BLVD 100' S & 33' E/O C/L INT	L 5854
BASELINE ( 2010 )	2,617.851 797.923	DPW BM TAG IN NE COR CONC EDISON VAULT 92' E & 30' S/O C/L INT 150TH ST E & AVE N-8	L 5855
BASELINE ( 2010 )	2,678.663 816.459	2" IP W/CONC PLUG & 42 SHELL CASING 6" UP @ NW COR AVE O & 140TH ST E 40' N & 40' W/O C/L INT 16' NW/O PP (NO#)	L 5858
BASELINE ( 2010 )	2,775.714 846.040	1.5" IP W/CONC PLUG & NAIL 1' DN @ NW COR AVE O & LONGVIEW RD 60' N & 60' W/O C/L INT MKR POST 2' N/O MON	L 5859
BASELINE ( 2010 )	2,777.667 846.635	2" IP W/CONC PLUG & DPW BM TAG 3' E PP (NO#) @ NE COR AVE O & 130TH ST E 43' N & 45' E/O C/L INT	L 5860
BASELINE ( 2010 )	2,618.454 798.107	2" IP W/CONC PLUG & DPW BM TAG 3' E/O WLY MOST PP STUB 15' W C/L 115TH ST E & 76' N/O C/L AVE O	L 5861

QUAD YEAR	ELEV FOOT/METER	DESCRIPTION	BM NUMBER
BASELINE ( 2010 )	2,609.007 795.228	DPW BM TAG IN S SIDE CONC BASE OF WATER DIST MH @ SW COR AVE O & 110TH ST E 23' W & 82' S/O C/L INT	L 5863
LLANO ( 2012 )	2,653.324 808.736	DPW BM TAG IN W CB 1' N/O BCR @ NW COR AVE O & 170TH ST E 43' W & 79' N/O C/L INT @ F HYD	L 5866
LLANO ( 2012 )	2,653.059 808.655	L&NAIL IN E CB 1' N/O BCR @ NE COR AVE O & 170TH ST E 40' E & 76' N/O C/L INT	L 5867
LLANO ( 2012 )	2,669.780 813.751	L&T IN S CB 1' E/O BCR @ SE COR 180TH ST E & AVE O 66' E & 33' S/O C/L INT	L 5868
LLANO ( 2012 )	2,695.095 821.467	2" IP W/CONC PLUG & CE TAG FL @ NW COR AVE O & FUT 195TH ST E 50' N & 50' W/O C/L INT MKR POST 1.5' N/O MON	L 5869
LLANO ( 2012 )	2,729.437 831.935	2" IP W/CONC PLUG & CE TAG 1' UP @ SE COR AVE O & 205TH ST E 50' S & 50' E/O C/L INT	L 5870
LLANO ( 2012 )	2,746.203 837.045	2" IP W/CONC PLUG & NAIL @ SE COR AVE O & 210TH ST E 50' S & 50' M E/O C/L INT 177' SW/O PP#734963E	L 5871
LLANO ( 2012 )	2,828.560 862.148	2" IP W/PLUG & CE TAG @ SW COR AVE O & 235TH ST E 50' S & 50' W/O C/L INT 102' SW/O PP (#734991E)	L 5872
LLANO ( 2012 )	2,656.465 809.693	DPW BM TAG IN S CB 1.5' E/O BCR @ SE COR 95TH ST E & PALMDALE BLVD 66' E & 43' S/O C/L INT	L 5874
LLANO ( 2012 )	2,670.001 813.819	DPW BM TAG IN CONC HDWL @ SE COR PALMDALE BLVD & 100TH ST E 40' E & 38' S/O C/L INT	L 5875
LLANO ( 2012 )	2,678.551 816.425	DPW BM TAG IN IN CTR CONC HDWL @ SW COR 105TH ST E & PALMDALE BLVD 36' S & 25' W/O C/L INT	L 5876
LLANO ( 2012 )	2,678.909 816.534	DPW BM TAG IN S END CONC HDWL @ SE COR 105TH ST E & PALMDALE BLVD 36' S & 26' E/O C/L INT	L 5877
LLANO ( 2012 )	2,721.907 829.640	2" IP W/DPW BM TAG 5' N/O PP #4535059E 33' N C/L PALMDALE BLVD & 73' E/O FUT 125TH ST E	L 5878
LLANO ( 2012 )	2,730.559 832.277	2" IP W/DPW BM TAG 5' NW/O PP #4400392E 33' M N C/L PALMDALE BLVD & 120' E/O C/L 135TH ST E	L 5879
LLANO ( 2012 )	2,755.160 839.775	2" IP W/DPW TAG 2' E/O PP #1190822E @ NW COR PALMDALE BLVD & 140TH ST E (N) 167' W & 30' N/O C/L INT	L 5881
LLANO ( 2012 )	2,756.195 840.091	2" IP W/DPW TAG 7' N/O PP #4534309E @ NE COR PALMDALE BLVD & 140TH ST E (N) 46' E & 33' N/O C/L INT	L 5882
LLANO ( 2012 )	2,786.496 849.327	DPW BM TAG IN N END CONC FTG OF WLY GATE PILLAR 13' W C/L PROD 160TH ST E & 36' S/O C/L PALMDALE BLVD	L 5883
LLANO ( 2012 )	2,788.207 849.848	DPW BM TAG 5' S/O NE COR CONC PORCH TO HSE #17012 PALMDALE BLVD 103' S/O C/L & 290' E/O C/L 170TH ST E	L 5884
LLANO ( 2012 )	2,814.888 857.980	1/2" IP & LS TAG #4089 5" UP 50' S/O PALMDALE BLVD & 10' W/O FUT 195TH ST E (DIRT RD) MKR POST 1' S/O MON (MKR 1' TALL)	L 5885

QUAD YEAR	ELEV FOOT/METER	DESCRIPTION	BM NUMBER
LLANO (2012)	2,914.479 888.336	2" IP & CE TAG 15' NE/O PP #2259572E @ NE COR PALMDALE BLVD & 230TH ST E 50' N & 50' E/O C/L INT	L 5887
LLANO (2012)	2,747.937 837.574	CS MON IN WELL 1.8' DN @ C/L INT 110TH ST E & AVE S	L 5890
LLANO (2012)	2,728.150 831.543	DPW BM TAG IN SW COR CONC ELEC BOX PAD @ NE COR 110TH ST E & AVE R-8 100' E & 46' N/O C/L INT	L 5892
LLANO (2012)	2,705.930 824.770	L&T IN N CB 1' W/O BCR @ NW COR 110TH ST E & AVE R 76' W & 33' N/O C/L INT	L 5893
LLANO (2012)	2,923.030 890.942	DPW BM TAG IN SW COR CONC PAD @ SE COR 165TH ST E & AVE T 43' S & 36' E/O C/L INT	L 5894
LLANO (2012)	3,846.983 1,172.564	BM TAG IN SE COR CONC PAD OF CONTROL BOX 28' W/O C/L LONGVIEW RD & 110' N/O C/L INT WITH PALLET CREEK RD	L 5908
LLANO (2012)	3,682.639 1,122.472	CSBM MON 6" UP 43' S/O C/L PALLETT CREEK RD & 1.36MI E/O LONGVIEW RD 33' E/O MILE MKR #1.27 MKD (BM CR-12 RE 5869) MKR POST 2' S/O MON	L 5910
LLANO (2012)	3,256.562 992.603	DPW BM TAG IN SE COR CONC PAD @ NE COR LONGVIEW RD & AVE W-8 56' E & 25' N/O C/L INT	L 5911
LLANO (2012)	3,147.147 959.253	DPW BM TAG IN W END HDWL @ SE COR LONGVIEW RD & AVE W 46' S & 20' E/O C/L INT	L 5912
LLANO (2012)	3,147.005 959.210	DPW BM TAG IN NW COR CONC F HYD PAD @ SE COR LONGVIEW RD & AVE W 90' E & 26' S/O C/L INT	L 5913
LLANO (2012)	3,062.000 933.300	USGS MON @ NW COR CONC DRAIN 26' E C/L LONGVIEW RD & 213' N/O AVE V-10 MKD (1964) MKR POST 8' E/O MON	L 5914
LLANO (2012)	3,999.643 1,219.095	1.5" IP W/CONC PLUG & SPK IN WELL 14" DN @ C/L INT LONGVIEW RD & TUMBLEWEED RD	L 5915
LLANO (2012)	4,177.710 1,273.370	DPW BM TAG IN NW COR CONC PAD FOR BENCH @ NW COR LONGVIEW RD & MURPHY LN 95' N & 30' W/O C/L INT	L 5916
LLANO (2012)	3,382.727 1,031.058	DPW BM TAG IN NW COR CONC F HYD PAD @ SE COR AVE X & LONGVIEW RD 20' N & 63' S/O C/L INT	L 5917
LLANO (2012)	4,183.118 1,275.018	2" IP W/CONC PLUG & DPW BM TAG FLUSH 7' S C/L PROD MURPHY LN & 20' E/O C/L LONGVIEW RD 1.5' S/O PP (#699006E)	L 5918
LLANO (2012)	4,654.777 1,418.780	DPW BM TAG IN NE COR CONC MAIL BOX PAD 33' N C/L JUNIPER HILLS RD & 30' W/O C/L 116TH ST E	L 5919
LLANO (2012)	4,293.235 1,308.582	DPW BM TAG IN SE COR CONC MAIL BOX PAD @ SE COR 106TH ST E & CIMA MESA RD 26' E & 92' S/O C/L INT	L 5920
LLANO (2012)	4,031.444 1,228.788	DPW BM TAG IN SE COR CONC MAILBOX PAD @ SE COR 106TH ST E & FOUR WINDS RD (PVT) 85' S & 23' E/O C/L INT @ HSE #30810	L 5921
LLANO (2012)	3,018.308 919.983	DPW BM TAG IN TOP CTR HDWL 43' S/O C/L PEARBLOSSOM HWY & 25' SE/O C/L DRWY TO HSE #1100 (0.20MI N/O AVE V) WATER & POWER DIRT ACCESS RD)	L 6276

QUAD YEAR	ELEV FOOT/METER	DESCRIPTION	BM NUMBER
LLANO (2012)	3,292.446 1,003.541	DPW BM TAG 1' E/O W END HDWL 25' S/O C/L PEARBLOSSOM HWY & 144' W/O C/L 185TH ST E	L 6280
LLANO (2012)	3,329.525 1,014.842	1.5" IP W/CONC PLUG SPK & DPW W FL 1.5" N/O PP(NO#) 45' N/O C/L PEARBLOSSOM HWY & OPP HSE #18852 207' W/O DIRT RD (N) & MI MRK (138 LA 66.37)	L 6281
LLANO (2012)	3,402.238 1,037.005	DPW BM TAG @ E END CONC HDWL 30' S/O C/L PEARBLOSSOM HWY & 150' E/O C/L 213TH ST E	L 6282
LLANO (2012)	3,412.784 1,040.220	CS MON UP 4" 57' S/O C/L PALMDALE RD & 0.24MI E/O HWY 138 MRKD (LA CO SURV CONTROL 1046 MESCAL CRK T1 1-9-6-0 1972 RE 7078) MRK POST (6' E/O MON)	L 6283
LLANO (2012)	3,405.787 1,038.087	2" IP FL W/CONC PLUG SPK & DPW W 33' S/O C/L PALMDALE RD & 0.75MI E/O HWY 138 MRK POST 1' W/O MON & GPS #0129 POST 5' W/O MON	L 6284
LLANO (2012)	3,371.769 1,027.718	1.5" IP W/CONC PLUG SPK W & DPW W FL 3' W/O PP#2199829E & 25' W/O C/L LARGO VISTA RD 54' N/O C/L INT BLACK BUTTE BASIN RD	L 6285
LLANO (2012)	3,320.552 1,012.107	1.5" IP W/CONC PLUG SPK & DPW W FL 6' N/O JOSHUA TREE & 11' E/O C/L DIRT RD (PVT) 37' SE/O C/L BLACK BUTTE BASIN RD (0.50MI NE/O LARGO VISTA RD) MKR POST 1' N/O MON (175' N/O GATE POLES TO PVT RD)	L 6286
LLANO (2012)	3,275.546 998.389	1.5" IP W/CONC PLUG SPK & DPW W FL 28' S/O C/L BLACK BUTTE BASIN RD & 1MI NE/O C/L LARGO VISTA RD NR BC CURVE @ SAND CROSSING 105 N/O JOSHUA TREE N SIDE RD 1" IP MKR 1' S/O MON S/O MON	L 6287
LLANO (2012)	3,221.170 981.816	1.5" IP W/CONC PLUG SPK & DPW W FL 6' S/O RR CROSSING ARM 15' SE/O C/L BLACK BUTTE BASIN RD & 1.70MI NLY/O C/L LARGO VISTA RD 30' S/O S MOST TRACK SPRR	L 6288
LLANO (2012)	3,220.742 981.685	DPW BM TAG @ NW COR CONC SLAB ELEC UTILITY BOX 38' NE/O N MOST RR TRACK & 23' E/O C/L BLACK BUTTE BASIN RD	L 6289
LLANO (2012)	3,197.995 974.752	DPW BM TAG IN LRG ROCK 50' SE/O C/L BLACK BUTTE BASIN RD & 30' N/O C/L RIVER BED CROSSING @ DIP 0.40MI NE/O SPRR TRACKS MKR PIPE 1' S/O MON	L 6290
LLANO (2012)	3,177.294 968.442	1.5" IP W/CONC PLUG SPK & DPW W FL 28' W/O DIRT RD & 23' S/O C/L BLACK BUTTE BASIN RD 0.60MI SW/O AVE U MKR POST 1' E/O MON	L 6291
LLANO (2012)	3,155.549 961.814	USGS BM MON 20' W/O C/L BLACK BUTTE BASIN RD & 185' S/O C/L PROD AVE U (FROM WEST) MKR PIPE 1' N/O MON MKD (LS 37 1929)	L 6292
LLANO (2012)	2,909.223 886.734	2" IP W/CONC PLUG & LACS TAG 4" UP @ +/- C/L PROD AVE M-8 & 40' W/O 240TH ST E MKR POST 1' W/O MON	L 6293
BASELINE (2010)	2,648.170 807.165	DPW BM TAG IN N END, CTR, CONC UTIL BOX @ NW COR 150TH ST E & AVE O 105' N & 40' W/O C/L INT	L 6294
LLANO (2012)	2,675.482 815.489	2" IP W/CONC PLUG & CS TAG UP 5" 51' S/O C/L AVE O & 100' W/O C/L 185TH ST E	L 6295
LLANO (2012)	2,915.299 888.586	DPW BM TAG @ W END CONC DRAIN @ SE COR PALMDALE BL & 230TH ST E 59' E & 18' S/O C/L INT (@ MI MKR #23.01)	L 6296



QUAD YEAR	ELEV FOOT/METER	DESCRIPTION	BM NUMBER
LLANO ( 2012 )	2,842.127 866.283	DPW BM TAG @ SE COR CONC BASE MAIL BOXES @ NW COR PALMDALE BL & 205TH ST E 89' W & 20' N/O C/L INT	L 6297
LLANO ( 2012 )	2,824.597 860.940	CS CONTROL MON IN CONC 44' E/O C/L 200TH ST E & 47' N/O C/L PALMDALE BL MKD (LOVEJOY BUTTE M6 RM1 1972)	L 6298
LLANO ( 2012 )	2,801.730 853.970	DPW BM TAG @ SW COR 3'X3' CONC SLAB WITH 3' TALL UTIL & 4 GUARD POSTS 25' E/O C/L 145TH ST E 79' N/O APPROX C/L FUTURE AVE P	L 6299
LLANO ( 2012 )	2,814.975 858.007	BM TAG N/W COR CONC SLAB OF WATER PUMP @ SE COR 165TH ST E & AVE R 86' S/O & 85' E/O C/L INT	L 6300
LLANO ( 2012 )	3,982.100 1,213.748	DPW BM TAG IN CONC HDWL 25' N/O C/L BOBS GAP RD 0.51MI W/O C/L PAORAMA RD (PVT) 8' W/O MI MRK #3.04	L 6301
LLANO ( 2012 )	4,046.536 1,233.388	2" IP W/CONC PLUG SPK & DPW WASH FLUSH 3' S/O STREET SIGN (BOBS GAP RD & PANORAMA RD) @ SE COR 40' S/O C/L BOBS GAP RD & 25' E/O C/L PAORAMA RD	L 6302
LLANO ( 2012 )	3,413.879 1,040.553	2" IP W/CONC PLUG & CS TAG UP 15" @ SE COR 165TH ST E & AVE X 55' S & 34' E/O C/L INT	L 6303
LLANO ( 2012 )	3,525.123 1,074.461	2" IP W/CONC PLUG & SPK & DPW WASH FLUSH 6' W/O PP#2223390E 23' S/O C/L PROD FT TEJON RD & 35' W/O C/L BOBS GAP RD (MRK POST 2' W/O MON)	L 6304
LLANO ( 2012 )	3,529.529 1,075.804	2" IP W/CONC PLUG SPK & DPW WASH 4' N/O JOSHUA TREE STUMP 3' TALL 43' E/O C/L BOBS GAP RD & 92' S/O C/L FT TEJON RD (MRK POST 2' E/O MON)	L 6305
LLANO ( 2012 )	3,635.329 1,108.052	2" IP W/CONC PLUG SPK & DPW WASH FLUSH 38' N/O C/L BOBS GAP RD & 75' N/O C/L AVE Y (DIRT RD) (0.50MI S/O C/L FT TEJON RD)	L 6306
LLANO ( 2012 )	3,847.913 1,172.847	2" IP CONC PLUG SPK & DPW WASH FLUSH @ SE COR FT TEJON RD AND UNNAMED DIRT RD 35' S/O & 30' E/O C/L INT (0.50MI W/O LARGO VISTA RD) MKR POST 2' S/O MON	L 6307
LLANO ( 2012 )	3,709.831 1,130.760	1" IP CONC PLUG SPK & DPW WASH FLUSH @ SW COR FT TEJON RD & LLANO CUT CUTOFF 33' S/O & 20' W/O C/L INT MKR POST 2' S/O MON	L 6308
LLANO ( 2012 )	3,707.031 1,129.906	1" IP CONC PLUG SPK & DPW WASH FLUSH @ NW COR FT TEJON RD & LLANO CUT OFF 26' N/O OF 21' W/O C/L INT	L 6309
LLANO ( 2012 )	3,666.950 1,117.690	1" IP CONC PLUG SPK & DPW WASH FLUSH 33' N/O C/L FT TEJON RD & 0.50MI W/O LLANO CUT OFF MKR POST 2' N/O MON	L 6310
LLANO ( 2012 )	3,625.542 1,105.069	1" IP CONC PLUG SPK & DPW WASH FLUSH @ SE COR FT TEJON RD & UNNAMED DIRT RD 34' S/O & 27' E/O C/L INT (0.10MI E/O MAILBOX ADDRESS #18501) MKR POST 2' S/O MON	L 6311
LLANO ( 2012 )	3,626.412 1,105.334	1" IP CONC PLUG SPK & DPW WASH FLUSH @ SW COR FT TEJON RD & UNNAMED DIRT RD 26' S/O & 20' W/O INT (1MI W/O LLANO CUT OFF) (0.10MI E/O MAILBOX ADDRESS 18501) MKR POST 2' S/O MON	L 6312

QUAD YEAR	ELEV FOOT/METER	DESCRIPTION	BM NUMBER
LLANO (2012)	3,596.981 1,096.363	1" IP CONC PLUG SPK & DPW WASH FLUSH 33' N/O C/L FT TEJON RD & 1.5MI W/O C/L LLANO CUT OFF & 0.15MI E/O C/L 180TH ST E MKR POST 2' N/O MON	L 6313
LLANO (2012)	3,577.173 1,090.326	1" IP CONC PLUG SPK & DPW WASH FLUSH @ NE COR FT TEJON RD & 175TH ST E 33' N/O & 40' E/O INT	L 6314
LLANO (2012)	3,575.544 1,089.829	1" IP CONC PLUG SPK & DPW WASH FLUSH @ NW COR FT TEJON RD & 175TH ST E 32' N/O & 38' W/O INT	L 6315
LLANO (2012)	3,540.439 1,079.129	1" IP CONC PLUG SPK & DPW WASH NEAR SW COR FENCE TO HSE #17075 25' N/O C/L FT TEJON RD & 0.40MI W/O 175TH ST E 3' W/O PP#2259925E	L 6316
LLANO (2012)	3,874.288 1,180.887	RDBM MON IN WELL (MKD 1960) 10" DN, 25' W/O C/L LONGVIEW RD & 0.51MI S/O C/L PALLET CREEK RD MRK POST 2.5' W/O MON & PP#698971E 4' E/O MON	L 6317
BASELINE (2010)	3,289.586 1,002.669	BR CAP MON IN WELL, NE COR 106TH ST E & BUTTERFIELD STAGE RD, 62' E/O & 20' N/O CL INT, MP 1.5' S/O MON	L 7214
BASELINE (2010)	2,961.335 902.618	LA CO BM DISC MRK'D 7218, TOP CTR 48" RCP OUTLET DRN, 31' S/O S'LY EP PEARBLOSSOM HWY & 0.25MI W/O 106TH ST E.	L 7218
BASELINE (2010)	2,957.612 901.483	LA CO BM DISC MRK'D 7219, TOP CTR 48" RCP OUTLET DRN, 31' S/O S'LY EP PEARBLOSSOM HWY & 0.55MI W/O 106TH ST E.	L 7219
BASELINE (2010)	2,948.613 898.740	1" IRON ROD MRK'D M4-412 DN 3", 63' N'LY OF EP PEARBLOSSOM HWY & 0.10MI E/O 96TH ST E., 1.5' E/O SW'LY COR CLF	L 7220
BASELINE (2010)	2,954.371 900.495	3" BR DISC MRK'D DWR CALIF. 357.6 A1 1998, S/SIDE PEARBLOSSOM HWY SW COR BRIDGE OVER AQUEDUCT & 0.1MI W/O 96TH ST E., TOP CONC GUARD RAIL	L 7221
BASELINE (2010)	2,933.700 894.194	2" IP W/LA CO BM DISC MRK'D 7222, 68' N'LY OF EP PEARBLOSSOM HWY & 0.4MI W/O 96TH ST E., 85' N/O PP 1294918E	L 7222
BASELINE (2010)	2,923.708 891.149	LA CO BM DISC MRK'D 7223, S/SIDE CTR CONC VAULT, 85' N/O & 265' W/O PEARBLOSSOM HWY & 89TH ST E.	L 7223
BASELINE (2010)	2,670.022 813.825	LA CO BM DISC MRK'D 7224, SE COR CONC PAD ELECT PANEL #37921, 30' W/O CL 90TH ST E. S/O AVE R, 10' S/O PP 4766952E	L 7224
BASELINE (2010)	2,657.065 809.876	L&T W/CURB 90TH ST E. 45' S/O AVE Q-12, S'LY END CONC DRWY	L 7225
BASELINE (2010)	2,800.765 853.676	DPW TAG, 25' S/O & 25' W/O CL INT 87TH ST E. & AVE T-4, NW COR CONC DRWY HSE 36155	L 7226
BASELINE (2010)	2,827.541 861.837	L&T SE COR 87TH ST E. & AVE T-10, SW COR FIRE HYD SLAB	L 7227
BASELINE (2010)	2,864.714 873.167	L&T W/CURB, SW COR 87TH ST E. & AVE U	L 7228
BASELINE (2010)	2,780.906 847.623	L&T SE COR 87TH ST E. & AVE T S/CURB, 1' W/O BCR	L 7229

QUAD YEAR	ELEV FOOT/METER	DESCRIPTION	BM NUMBER
BASELINE ( 2010 )	2,752.771 839.047	L&BRAD E/SIDE 87TH ST E. HSE 36650, S'LY DRWY (3' NW OF MAILBOX)	L 7230
BASELINE ( 2010 )	2,729.504 831.955	2" IP W/LA CO BM DISC MRK'D 7231, 65' W/O & 250' S/O CL 90TH ST E. & KANOW AVE (3' W/O FIRE HYD)	L 7231
BASELINE ( 2010 )	2,649.272 807.501	L&T E/CURB 90TH ST E. @ N'LY SIDE DRWY HSE 38322	L 7232
BASELINE ( 2010 )	2,715.951 827.824	LA CO BM DISC MRK'D 7233, 30' N/O & 85' E/O 90TH ST E. & AVE S (SW COR FIRE HYD PAD)	L 7233
BASELINE ( 2010 )	2,625.207 800.166	LA CO BM DISC MRK'D 7234, TOP OF 3' DIA CONC BASE, 65' E/O & 0.25MI N/O CL 90TH ST E. & AVE Q, OPP PP 4011765	L 7234
BASELINE ( 2010 )	2,615.564 797.226	2" IP W/ LA CO ENG'R TAG, CL AVE P-8 & 45' W/O 90TH ST E. (E/EDGE)	L 7235
BASELINE ( 2010 )	2,605.077 794.030	LA CO BM DISC MRK'D 7236, 32' S/O CL INT 90TH ST E. & AVE P, S'LY GATE POST FTG, 15' NW'LY PP 373174E	L 7236
BASELINE ( 2010 )	2,592.077 790.067	BM NAIL, 55' E/O & 275' N/O CL 90TH ST E. & AVE O-8, SE COR VALVE FTG, 80' E/O PP 373161E	L 7237
BASELINE ( 2010 )	2,578.209 785.840	LA CO BM DISC MRK'D 7238, 57' NE/O CL INT 90TH ST E. & AVE O, FNC COR FTG	L 7238
BASELINE ( 2010 )	2,567.120 782.461	2" IP W/CO ENG'R TAG UP 6", 70' SE/O CL INT 90TH ST E. & AVE N-8, 60 S/O PP 4205073E, MP 1' S'LY	L 7239
BASELINE ( 2010 )	2,563.529 781.366	CE MON MRK'D RE 5869, BM 107-15-1961, 0.25MI S/O & 60' E/O CL INT AVE N & 90TH ST E., MP 3' S'LY	L 7240
BASELINE ( 2010 )	2,556.417 779.198	2"IP & CE TAG, 100' SW'LY/O CL INT 90TH ST E & AVE N (MP 1.5' SW)	L 7241
BASELINE ( 2010 )	2,582.932 787.280	1.5" IP DN 11", 71' NW OF CL INT AVE O & 95TH ST E.	L 7280
BASELINE ( 2010 )	2,607.192 794.675	1.5" IP DN 4", 68' NW OF CL INT AVE O & 110TH ST E., 2' N/O MILE MKR POST	L 7281
BASELINE ( 2010 )	2,669.727 813.735	2" IP W/DPW TAG DN 4", 71' NW OF CL INT AVE O & 120TH ST E.	L 7282
BASELINE ( 2010 )	2,749.701 838.111	2" IP W/DPW TAG FLUSH, 71' NW OF CL INT AVE O 125TH ST E	L 7283
BASELINE ( 2010 )	2,772.236 844.980	2" IP W/CO ENG'R TAG DN 5", 71' SE OF CL INT AVE O & 130TH ST E.	L 7284
BASELINE ( 2010 )	2,766.153 843.126	CALIF DIV OF HWY MON FLUSH, 60' S/O & 0.25MI E/O CL INT AVE O & 125TH E, MRK'D ALP 1984, 2' N/O MILE MKR POST	L 7285
BASELINE ( 2010 )	2,673.038 814.744	1.5" IP FLUSH, 70' SE OF CL INT AVE O & 140TH ST E	L 7286
BASELINE ( 2010 )	2,579.714 786.299	DPW TAG IN CONC FTG FENCE COR @ NW COR AVE M & 160TH ST E	L 7287

QUAD YEAR	ELEV FOOT/METER	DESCRIPTION	BM NUMBER
BASELINE ( 2010 )	2,777.141 846.475	2"IP W/CO ENG'R TAG UP 4", 50' N/O AVE M & 225TH ST E	L 7288
LLANO ( 2012 )	2,690.339 820.018	LA CO BM DISK MRK'D 7289, NE COR PALMDALE AVE & 110TH ST E. @ ANG PT OF HDWL	L 7289
BASELINE ( 2010 )	2,754.636 839.616	LA CO BM DISK MRK'D 7291, 95' N/O & 0.20MI E/O CL INT AVE S & 110TH ST E, SE COR ELECT BOX FTG #F11111	L 7291
LLANO ( 2012 )	3,060.656 932.891	CALIF DEPT WTR RESOURCES DISK MRK'D M5-18A, DN 5", 50' E/O & 0.10MI N/O CL INT PEARBLOSSOM HWY & 116TH ST E.	L 7292
BASELINE ( 2010 )	2,649.349 807.524	2" IP W/ DPW BM DISK MRK'D 7293, 50' N/O AVE O & 145TH ST E. NEAR CL PROD, 2' S/O MKR POST	L 7293
LLANO ( 2012 )	2,967.237 904.417	L&BRAD IN CONC COLLAR, 2' S/O CTR TELE MH, 55' N/O & 230' E/O 106TH ST E & PEARBLOSSOM HWY	L 7294
BASELINE ( 2010 )	2,608.950 795.210	2" IP W/LA CO BM DISK MRK'D 7295 DN 2", 60' S & 60' W/O CL INT AVE M & 180TH ST E	L 7295
LLANO ( 2012 )	2,777.101 846.463	2" IP LA CO BM DISK MRK'D 7296 UP 2", 100' SW OF CL INT PALMDALE AVE & 150TH ST E. 2' E/O MKR POST	L 7296
LLANO ( 2012 )	3,077.952 938.163	BR MON IN WELL, CL INT PEARBLOSSOM HWY & 116TH ST E	L 7297
LLANO ( 2012 )	3,055.226 931.236	LA CO BM DISK MRK'D 7298, S/CURB, SE COR PEARBLOSSOM HWY & LONGVIEW RD, 3.5' E/O BCR	L 7298
LLANO ( 2012 )	3,425.127 1,043.982	LA CO BM DISK MRK'D 7299, 30' NE'LY & 0.30MI NW'LY OF CL INT FT. TEJON RD & 121ST ST E., W'LY COR FH PAD	L 7299
LLANO ( 2012 )	3,514.836 1,071.325	1.5" IP & LA CO BM DISK MRK'D 7300, 48' S'LY OF FT. TEJON RD CL PROD OF LONGVIEW RD	L 7300
LLANO ( 2012 )	3,257.882 993.005	3" IP & LA CO BM DISK MRK'D 7301, UP 3", NE COR LONGVIEW RD & AVE W-8, 1' E/O GUY POLE	L 7301
LLANO ( 2012 )	3,995.574 1,217.855	LA CO BM DISK MRK'D 7302 IN ROCK, 110' NE CL INT LONGVIEW RD & TUMBLEWEED RD	L 7302
LLANO ( 2012 )	3,881.883 1,183.202	2" IP W/LA CO BM DISK MRK'D 7303 UP 4", 25' W/O LONGVIEW RD & 120 N/O DIRT RD HSE # 30073, 2' W/O ICY SIGN	L 7303
LLANO ( 2012 )	4,398.435 1,340.647	LA CO BM DISK MRK'D 7304, 25' E & 150' S/O SIERRA MESA RD & JUNIPER HILL RD, MAILBOX SLAB	L 7304
LLANO ( 2012 )	3,088.916 941.504	L&BRAD, 82' N/O & 85' W/O PEARBLOSSOM HWY & 136TH ST E. NE'LY COR FH PAD	L 7305
LLANO ( 2012 )	3,096.394 943.784	DPW BM TAG TOP OF 24" RCP OUTLET DRN, 54' S/O & 250' E/O CL INT PEARBLOSSOM HWY & 136TH ST E, 102' W/O DRWY HSE #13618	L 7306
LLANO ( 2012 )	3,132.526 954.797	CHS ? ON N'LY METEL COLLAR TEL MH DN 3", 50' S/O & 1MI E/O LONGVIEW RD & PEARBLOSSOM HWY CL INT, 170' NE'LY OF TEL POLE STUB #29 (CUT POLE)	L 7307

QUAD YEAR	ELEV FOOT/METER	DESCRIPTION	BM NUMBER
LLANO (2012)	3,164.689 964.600	LA CO BM DISK MRK'D 7308, TOP OF RCP DRN OUTLET, 70' S/O & 1.8MI E/O CL INT LONGVIEW RD & PEARBLOSSOM HWY	L 7308
LLANO (2012)	3,167.668 965.508	2" BR DISK MRK'D LA CO RD 1960 - 7309, TOP 36" RCP OUTLET DRN , 75' S/O & 1.2MI W/O 165TH ST E.& PEARBLOSSOM HWY CL INT, 132' E/O MILE MKR 62.50 LA 138	L 7309
LLANO (2012)	3,166.725 965.221	2" IP W/ SPK & W DN 10", 60' S/O & 0.75MI W/O 165TH ST E & PEARBLOSSOM HWY, 320' W'LY OF SW COR BRIDGE OVER BIG ROCK CRK, ORANGE MKR	L 7310
LLANO (2012)	3,171.604 966.708	CAL TRANS TAG NE COR OF BRIDGE OVER BIG ROCK CRK, 0.60MI W/O CL INT PEARBLOSSOM HWY & 165TH ST E	L 7311
LLANO (2012)	3,174.404 967.561	L&BRAD, SE COR PEARBLOSSOM HWY & 165TH ST E. 25' E/O & 130' S/O CL INT, N'LY CTR 2'X2' CONC SLAB ELECT BOX	L 7312
LLANO (2012)	3,138.960 956.758	LA CO BM DISK MRK'D 7313, 82' N & 85' W/O CL INT PEARBLOSSOM HWY & 136TH ST E, S/EDGE CONC FH SLAB	L 7313
LLANO (2012)	3,107.444 947.152	2" IP W/ CE TAG UP 8", 71' SW OF CL INT 165TH ST E. & AVE V	L 7314
LLANO (2012)	3,050.299 929.734	2" IP W/CE TAG UP 6", 71' NE OF 165TH ST E & AVE U-8	L 7315
LLANO (2012)	2,922.121 890.665	DPW TAG IN SW COR CONC TELE BOX PAD, 36' N & 48' E OF 165TH ST E & AVE T	L 7316
LLANO (2012)	2,862.549 872.508	LA CO BM DISK MRK'D 7317, 90' N & 27' E/O CL INT 165TH E & AVE S, SW COR OF CONC ELECT BOX	L 7317
LLANO (2012)	2,812.429 857.231	L&T NW COR CONC FTG, 44' N & 36' E/O CL INT AVE S & 165TH ST E	L 7318
LLANO (2012)	2,791.115 850.734	2" IP BR DISK MRK'D 7319 UP 8", 43' N & 225' W/O CL INT PALMDALE RD & 165TH ST E, 15' N/O PP#1190884E	L 7319
LLANO (2012)	2,781.152 847.698	DPW TAG IN FENCE COR FTG, 30' E & 30' S/O CL INT PALMDALE BLVD & 175TH ST E	L 7320
LLANO (2012)	2,839.977 865.628	BR DISK MRK'D LOVEJOY BUTTE, 30' E & 210 S/O CL INT 165TH ST E. & AVE R-8, 3' SE'LY OF PP#4312485E	L 7321
LLANO (2012)	2,688.466 819.447	SPK&DPW W FLUSH, 48' N & 40' W/O CL INT LAKE LOS ANGELES AVE & 180TH ST E, CTR OF BIKE PATH	L 7322
LLANO (2012)	2,632.038 802.248	2" IP W/LA CO BM DISK MRK'D 7323 FLUSH, 40' S & 95' W/O CL INT AVE N & 180TH ST E, 2' S/O PP#135529E	L 7323
LLANO (2012)	2,617.497 797.815	2" IP W/LA CO BM DISK MRK'D 7324 FLUSH, 70' S & 36' W/O CL INT AVE N-8 & 180TH ST E, 2' E/O MKR POST	L 7324
LLANO (2012)	2,689.458 819.749	2" IP W/LA CO ENG'R TAG UP 6", 50' E & 50' S/O CL INT LAKE LOS ANGELES AVE & 180TH ST E	L 7325
LLANO (2012)	2,696.494 821.894	2" IP W/LA CO ENG'R TAG DN 10", 50' E & 50' S/O CL INT AVE O & 195TH ST E	L 7326

QUAD YEAR	ELEV FOOT/METER	DESCRIPTION	BM NUMBER
LLANO (2012)	2,713.862 827.188	2" IP W/LA CO ENG'R TAG DN 18", 50' E & 50' N/O CL INT AVE O & 200TH ST E	L 7327
LLANO (2012)	2,673.771 814.968	2" IP W/LA CO ENG'R TAG FLUSH, 50' E & 50' N/O CL INT AVE O & 185TH ST E	L 7328
LLANO (2012)	2,664.012 811.993	L&T IN WALL FTG @NW COR HSE #17424, 60'S & 180' W/O 175TH ST E & AVE O	L 7329
LLANO (2012)	2,662.370 811.493	2" IP W/LA CO BM DISK MRK'D 7330 FLUSH, 50' N & 270' W/O CL INT AVE O & 175TH ST E, 2' N/O PP#1847063E	L 7330
LLANO (2012)	2,643.276 805.673	LA CO ENG'R TAG NE COR BRIDGE HDWL, 45' N & 40' W/O CL INT AVE O & 165TH ST E	L 7331
LLANO (2012)	2,663.616 811.873	LA CO BM DISK MRK'D 7332, 30' N & 85' W/O CL INT AVE O & 160TH ST E, S.CTR SIDE OF EDISON VAULT	L 7332
LLANO (2012)	2,667.619 813.093	L&T, SE'LY POST OF GAS VAULT, 90' N & 45' E/O CL INT AVE O & 155TH ST E	L 7333
LLANO (2012)	3,552.500 1,082.805	LA CO BM DISK MRK'D 7334, NW COR FH PAD, 18' S/O CL FT. TEJON RD, 10' E/O PP#2273677E (NEAR HSE 17112)	L 7334
LLANO (2012)	3,599.852 1,097.238	2"IP W/SPK&DPW W UP 8", 30' S & 30' W/O CL INT FT TEJON RD & DIRT ROAD NEAR 180TH ST E	L 7335
LLANO (2012)	3,656.570 1,114.526	3/4"IP W/LS3199 FLUSH, 35' N & 15' W/O FT. TEJON RD & DIRT ROAD NEAR 190TH ST E, 1' SE OF RR POST	L 7336
LLANO (2012)	2,685.443 818.525	2" IP WCO ENG'R TAG UP 5", 42' E/O CL INT 200TH ST E & AVE M-8	L 7337
LLANO (2012)	3,843.538 1,171.514	2" IP WCO ENG'R TAG UP, 50' N & 0.50MI W/O CL INT FT. TEJON RD & LARGO VISTA RD (43' W/O DIRT ROAD)	L 7338
LLANO (2012)	2,782.463 848.097	L&T IN W.GATE FTG HSE#18531, 50' N/O PALMDALE BLVD & NEAR 186TH ST E, 65' E/O TELE POLE #19H	L 7339
LLANO (2012)	2,803.123 854.394	2" IP W/CO ENG'R TAG UP 2", SW COR 190TH ST E & PALMDALE BLVD, 2' N/O MKR POST	L 7340
LLANO (2012)	2,840.383 865.751	L&T IN FTG 3" IP 5' HIGH, 300' W & 50' S/O 205TH ST E & PALMDALE BLVD	L 7341
LLANO (2012)	2,870.960 875.071	1.5" IP, 50' S/O PALMDALE BLVD & 215TH ST E, 62' E/O PP#4438000E	L 7342
LLANO (2012)	2,909.352 886.773	1" IP, 50' S & 50' W/O CL INT PALMDALE BLVD & 220TH ST E, 50' E/O PP#2260952E	L 7343
LLANO (2012)	2,900.112 883.957	1.5" IP DN 1", 70' S/O CL INT PALMDALE BLVD & 225TH ST E (DIRT), 33' W/O PP#4093316E, 2' N/O MKR POST	L 7344
LLANO (2012)	2,927.951 892.442	1" IP W/DPW TAG DN 10", 43' N & 52' W/O CL INT PALMDALE BLVD & 235TH ST E, 2' N/O MKR POST	L 7345
LLANO (2012)	3,010.618 917.639	2" IP, 50' S & 50' W/O CL INT AVE S (DIRT RD) & 235TH ST E	L 7346

QUAD YEAR	ELEV FOOT/METER	DESCRIPTION	BM NUMBER
LLANO ( 2012 )	3,087.596 941.102	1.5"IP, 70 NW OF FUT AVE T & 235TH ST E, 1' S/O MKR POST	L 7347
LLANO ( 2012 )	3,088.419 941.353	1.5"IP, 70 SE OF FUT AVE T & 235TH ST E, 2.6MI S/O PALMDALE BLVD, 1' W/O MKR POST	L 7348
LLANO ( 2012 )	3,244.922 989.055	1"IP W/ CAL TRANS TAG FLUSH, 45' S & 0.45MI E/O PEARBLOSSOM HWY & 175TH ST E	L 7349
LLANO ( 2012 )	3,401.163 1,036.678	1"IP UP 2", NE COR PALMDALE BLVE & 228TH ST E, 50' N & 40' E/O CL INT	L 7350