

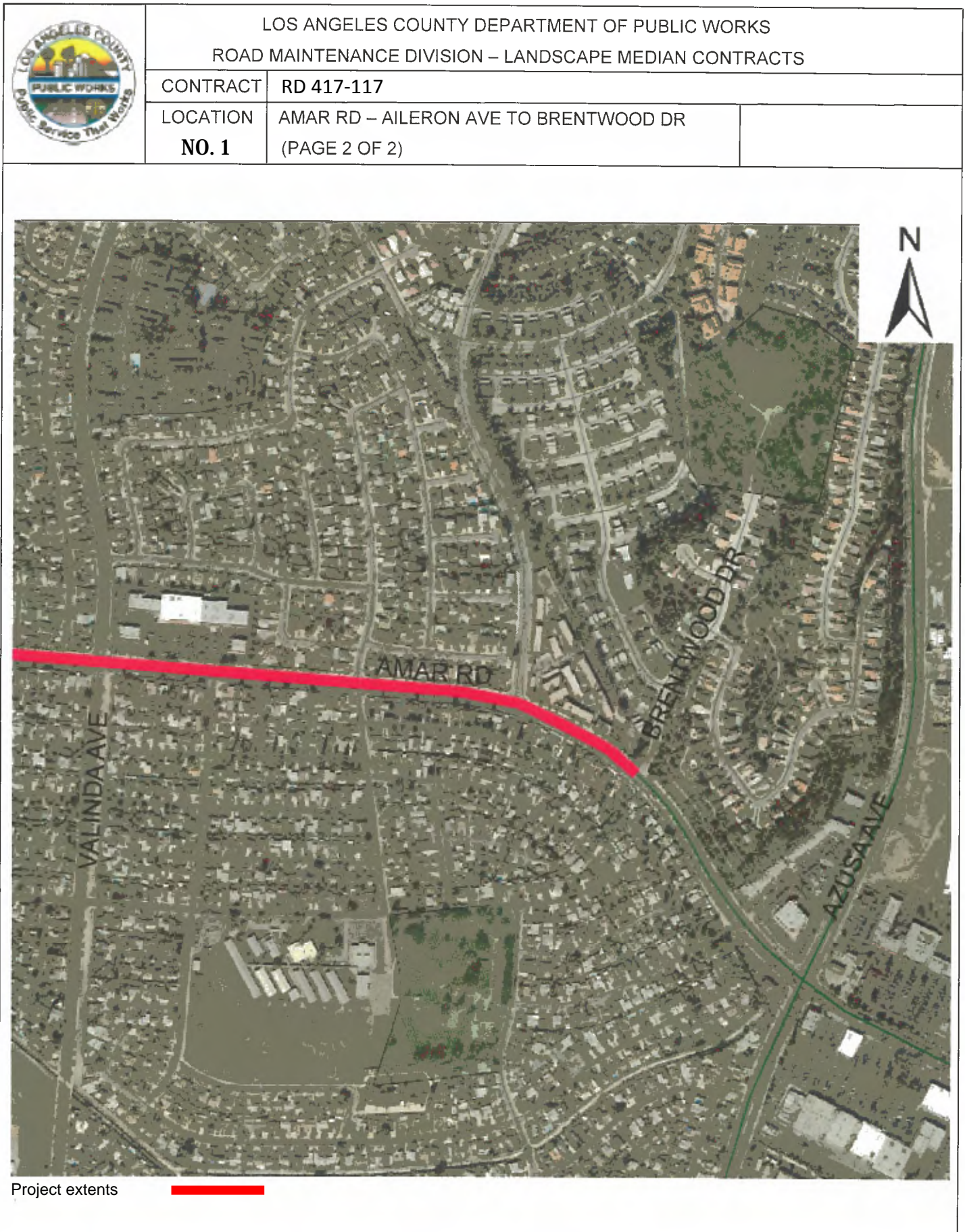
SERVICE AREA MAPS


LANDSCAPE AND GROUNDS MAINTENANCE SERVICES FOR RD417 MEDIANS

Please note: All maps for this location may be accessed at:
<http://pw.lacounty.gov/brcd/servicecontracts/>.

<u>No.</u>	<u>Location</u>	<u>Limits</u>
1.	Amar Rd Medians	Aileron Ave to Brentwood Dr
2.	Valinda Ave	Temple Ave to Amar Rd (Both Sides of Pkwy & Vines)
3.	Fullerton Rd Medians	Galatina St to Senteno St
4.	Colima Rd Medians	Fullerton Rd to Nogales St
5.	Nogales St	Walnut Dr to San Jose Ave (Median, E/S of Pkwy & Vines)
6.	Nogales St Medians	S/O Colima Rd to Pathfinder Rd Adney St to 480' N/O Adney St (West Frontage Median)
7.	Fairway Dr Medians	Walnut Dr to Colima Rd
8.	Pomona Fwy Interchange	At Azusa Ave (Fwy to Tomich Rd) At Fullerton Rd (Fwy to Los Palacios Dr, East Side Only) At Nogales St (Walnut Dr to Colima Rd)
9.	Harbor Blvd Median	Pathfinder Rd to the Orange County Line
10.	SD1 Parkway Maintenance	Various Sites
11.	SD4 Parkway Maintenance	Various Sites





	LOS ANGELES COUNTY DEPARTMENT OF PUBLIC WORKS ROAD MAINTENANCE DIVISION – LANDSCAPE MEDIAN CONTRACTS		
	CONTRACT	RD 417-117	
	LOCATION NO. 2	VALINDA AVE – TEMPLE AVE TO AMAR RD BOTH SIDES OF PKWY AND VINES	



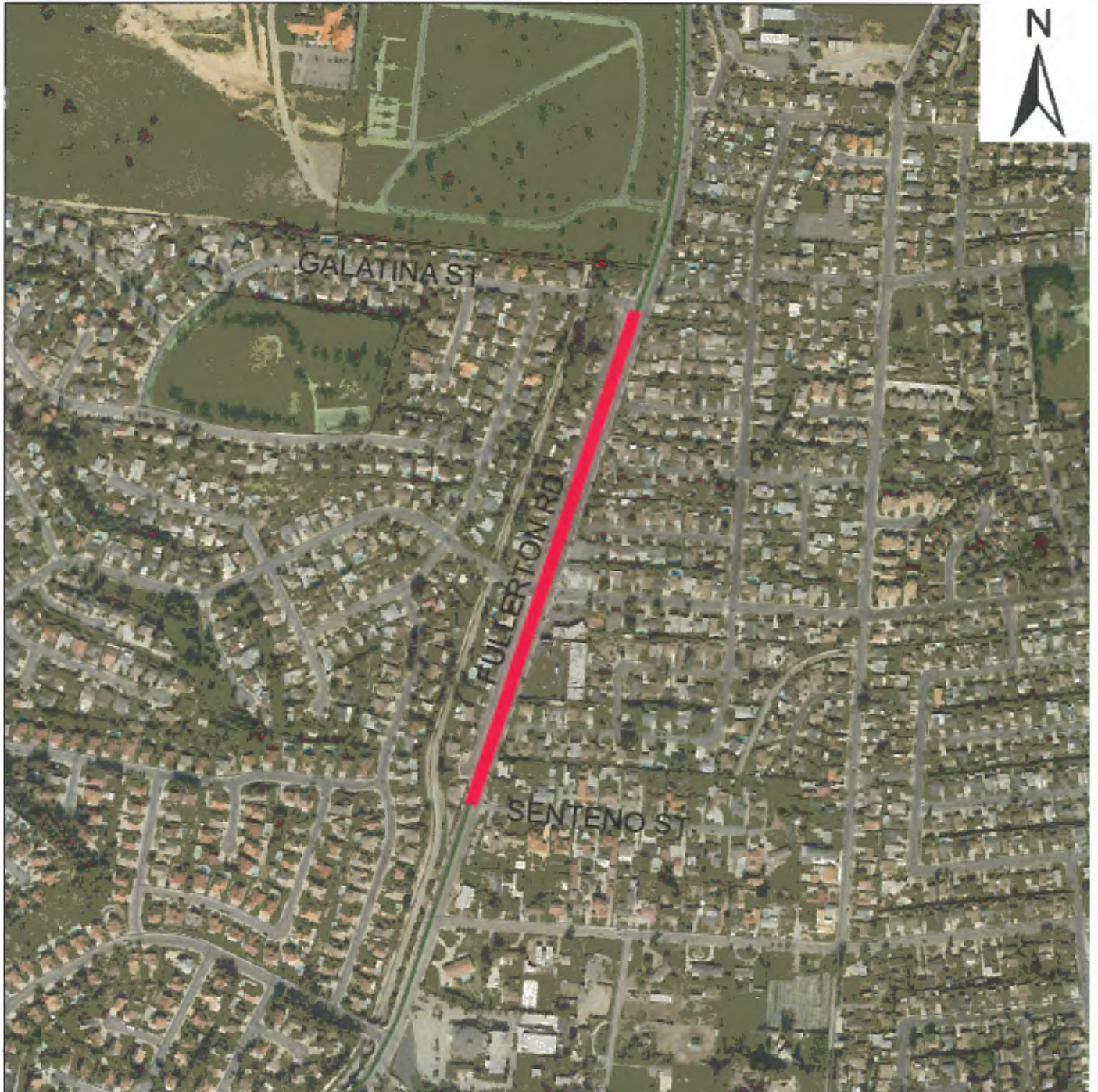
Project extents —————



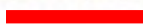
LOS ANGELES COUNTY DEPARTMENT OF PUBLIC WORKS
ROAD MAINTENANCE DIVISION – LANDSCAPE MEDIAN CONTRACTS


CONTRACT RD 417-117

LOCATION FULLERTON RD – GALATINA ST TO SENTENO ST
NO. 3




Project extents



	LOS ANGELES COUNTY DEPARTMENT OF PUBLIC WORKS ROAD MAINTENANCE DIVISION – LANDSCAPE MEDIAN CONTRACTS		
	CONTRACT	RD 417-117	
	LOCATION NO. 4	COLIMA RD – FULLERTON RD TO NOGALES ST	




Project extents

	LOS ANGELES COUNTY DEPARTMENT OF PUBLIC WORKS ROAD MAINTENANCE DIVISION – LANDSCAPE MEDIAN CONTRACTS		
	CONTRACT	RD 417-117	
	LOCATION NO. 5	NOGALES ST – WALNUT DR TO SAN JOSE AVE MEDIAN, E/S OF PKWY AND VINES	



Project extents


	LOS ANGELES COUNTY DEPARTMENT OF PUBLIC WORKS ROAD MAINTENANCE DIVISION – LANDSCAPE MEDIAN CONTRACTS		
	CONTRACT	RD 417-117	
	LOCATION NO. 6	NOGALES ST – S/O COLIMA RD TO PATHFINDER RD	



Project extents: —

Parkway/Frontage Median Maintenance: - -




	LOS ANGELES COUNTY DEPARTMENT OF PUBLIC WORKS ROAD MAINTENANCE DIVISION – LANDSCAPE MEDIAN CONTRACTS		
	CONTRACT	RD 417-117	
	LOCATION NO. 8	POMONA FWY INTERCHANGE AT AZUSA AVE, FULLERTON RD, & NOGALES ST	



Project extents



	LOS ANGELES COUNTY DEPARTMENT OF PUBLIC WORKS ROAD MAINTENANCE DIVISION – LANDSCAPE MEDIAN CONTRACTS	
	CONTRACT	RD 417-117
	LOCATION NO. 9	HARBOR BLVD – PATHFINDER RD TO ORANGE CO. LIMIT

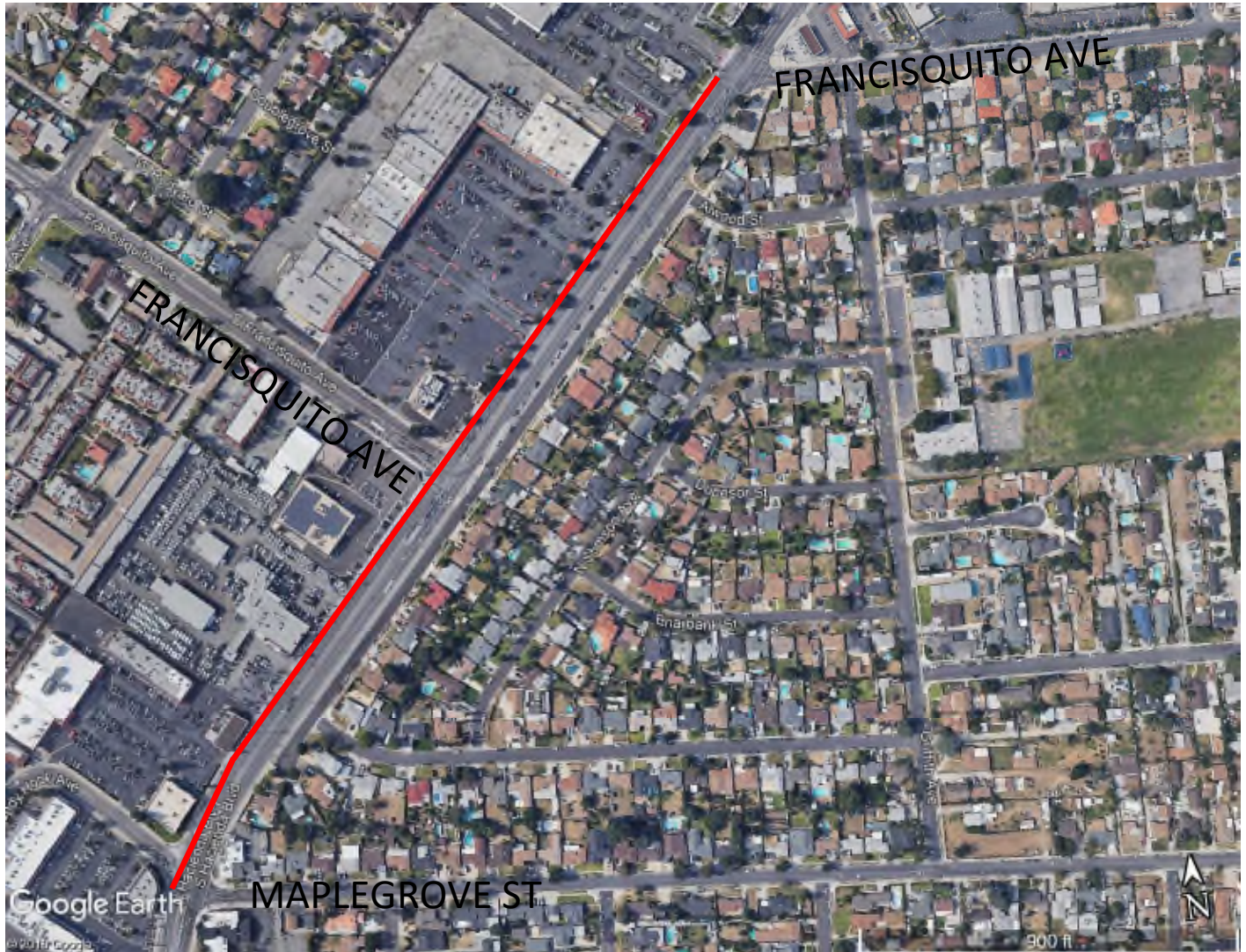


Project extents



LOS ANGELES COUNTY DEPARTMENT OF PUBLIC WORKS
ROAD MAINTENANCE DIVISION – LANDSCAPE MEDIAN CONTRACTS

CONTRACT	RD 417-117
LOCATION No. 10	HACIENDA BLVD FROM FRANCISQUITO AVE TO MAPLEGROVE ST (WEST SIDE ONLY)



Project extents:



LOS ANGELES COUNTY DEPARTMENT OF PUBLIC WORKS
ROAD MAINTENANCE DIVISION – LANDSCAPE MEDIAN CONTRACTS

CONTRACT RD 417-117

LOCATION
No. 10 AMAR RD FROM ECHELON AVE TO VALINDA AVE (BOTH SIDES),
VALINDA AVE TO 100' E/O WITZMAN DR (SOUTH SIDE ONLY)



Project extents: —



LOS ANGELES COUNTY DEPARTMENT OF PUBLIC WORKS
ROAD MAINTENANCE DIVISION – LANDSCAPE MEDIAN CONTRACTS

CONTRACT RD 417-117

LOCATION TEMPLE AVE FROM 352' W/O RUTHCREST AVE (NORTH SIDE ONLY) TO 1850' E/O AZUSA AVE

No. 10



Project extents: —



LOS ANGELES COUNTY DEPARTMENT OF PUBLIC WORKS
ROAD MAINTENANCE DIVISION – LANDSCAPE MEDIAN CONTRACTS

CONTRACT	RD 417-117	
LOCATION No. 10	AZUSA AVE FROM AMAR RD TO TEMPLE AVE (WEST SIDE ONLY)	



Project extents: —



LOS ANGELES COUNTY DEPARTMENT OF PUBLIC WORKS
ROAD MAINTENANCE DIVISION – LANDSCAPE MEDIAN CONTRACTS

CONTRACT RD 417-117

LOCATION VALLEY BLVD FROM 680' W/O ALDERTON AVE TO 620' E/O ALDERTON AVE AND
No. 10 FROM 450' E/O GIANO AVE TO 1000' W/O NOGALES ST (NORTH SIDE ONLY)



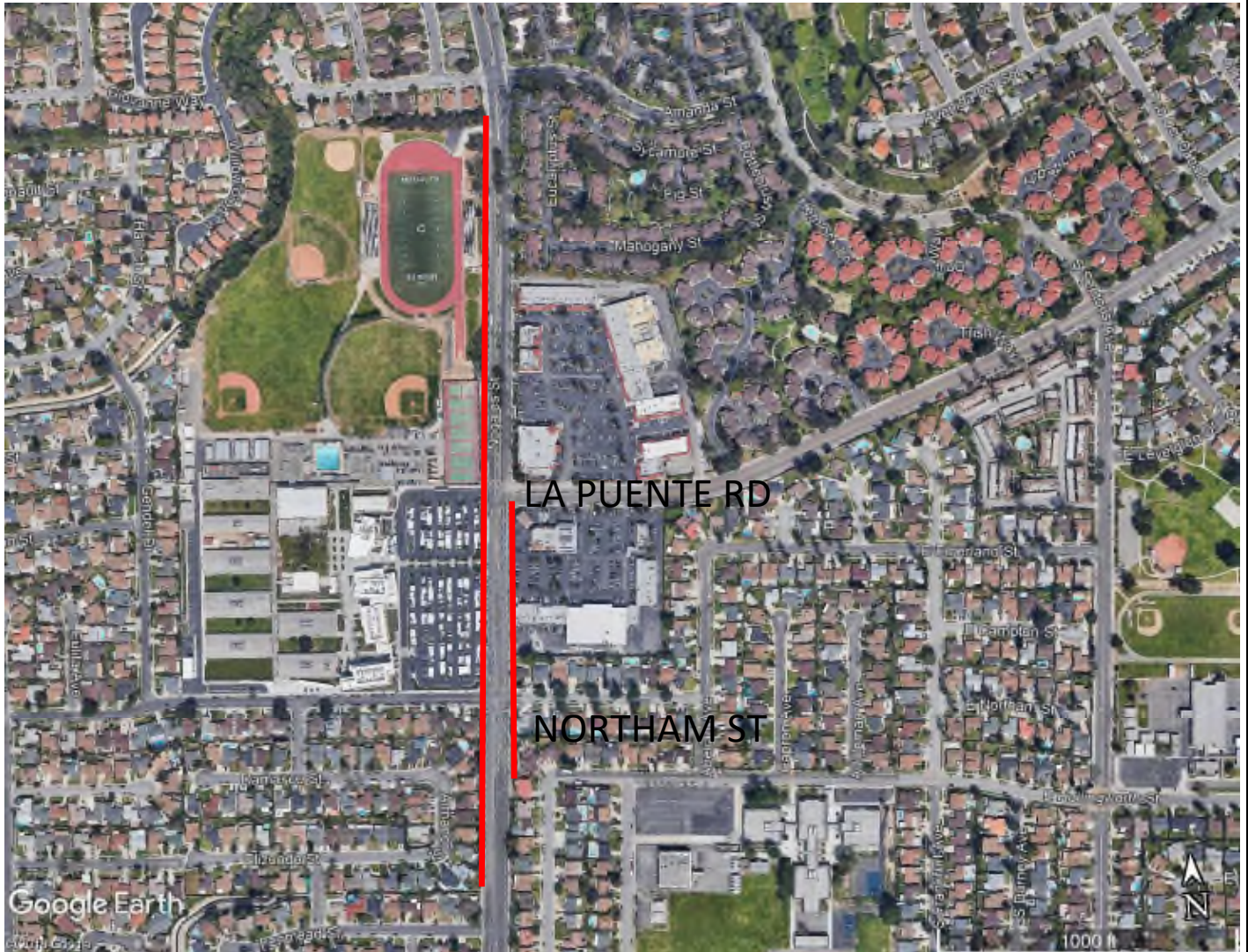
Project extents:



LOS ANGELES COUNTY DEPARTMENT OF PUBLIC WORKS
ROAD MAINTENANCE DIVISION – LANDSCAPE MEDIAN CONTRACTS

CONTRACT RD 417-117

LOCATION NO. 10 NOGALES ST FROM 1269 N/O LA PUENTE RD TO 650 S/O NORTHAM ST (WEST SIDE ONLY) AND FROM LA PUENTE RD TO 282 S/O NORTHAM ST (EAST SIDE ONLY)



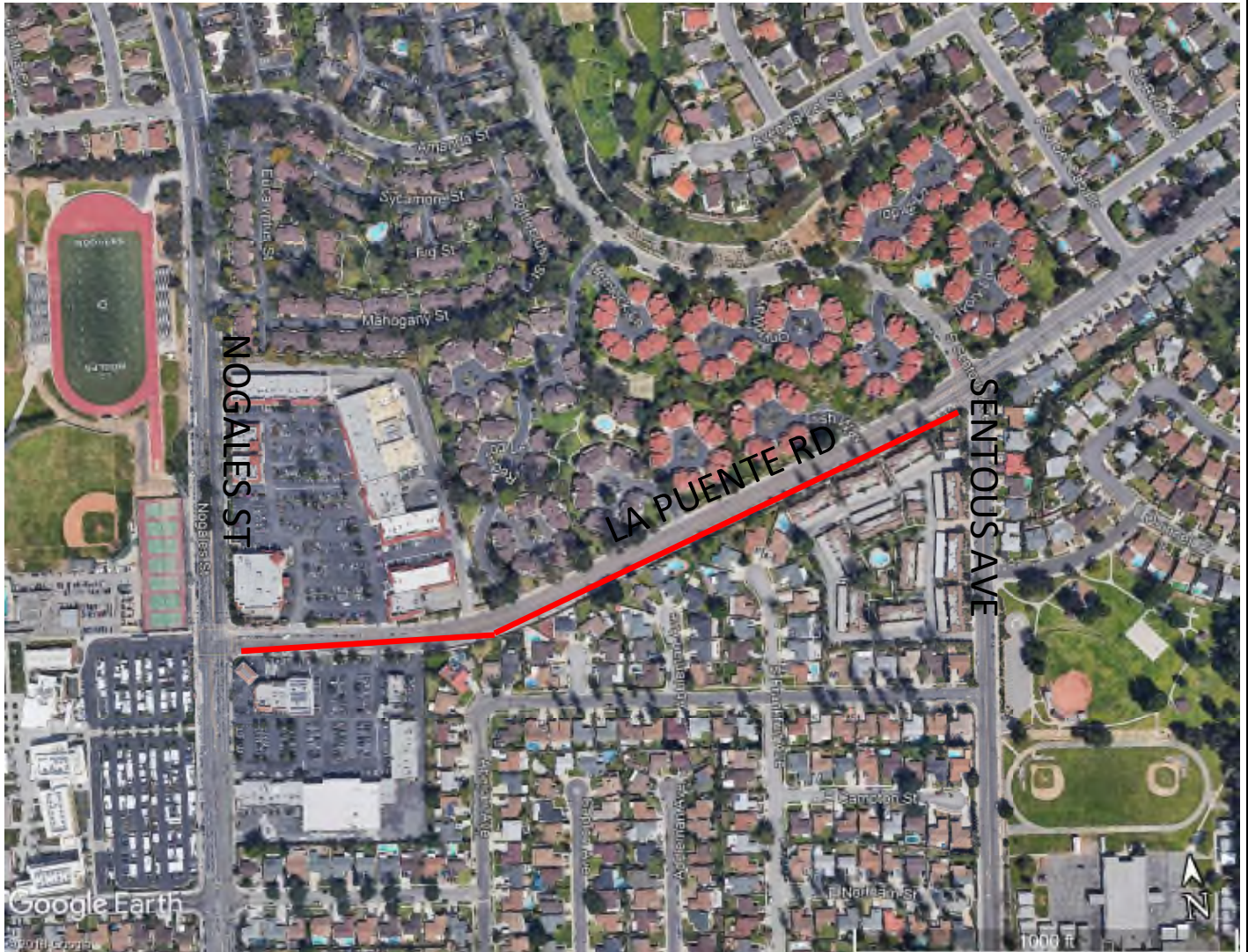
Project extents: —



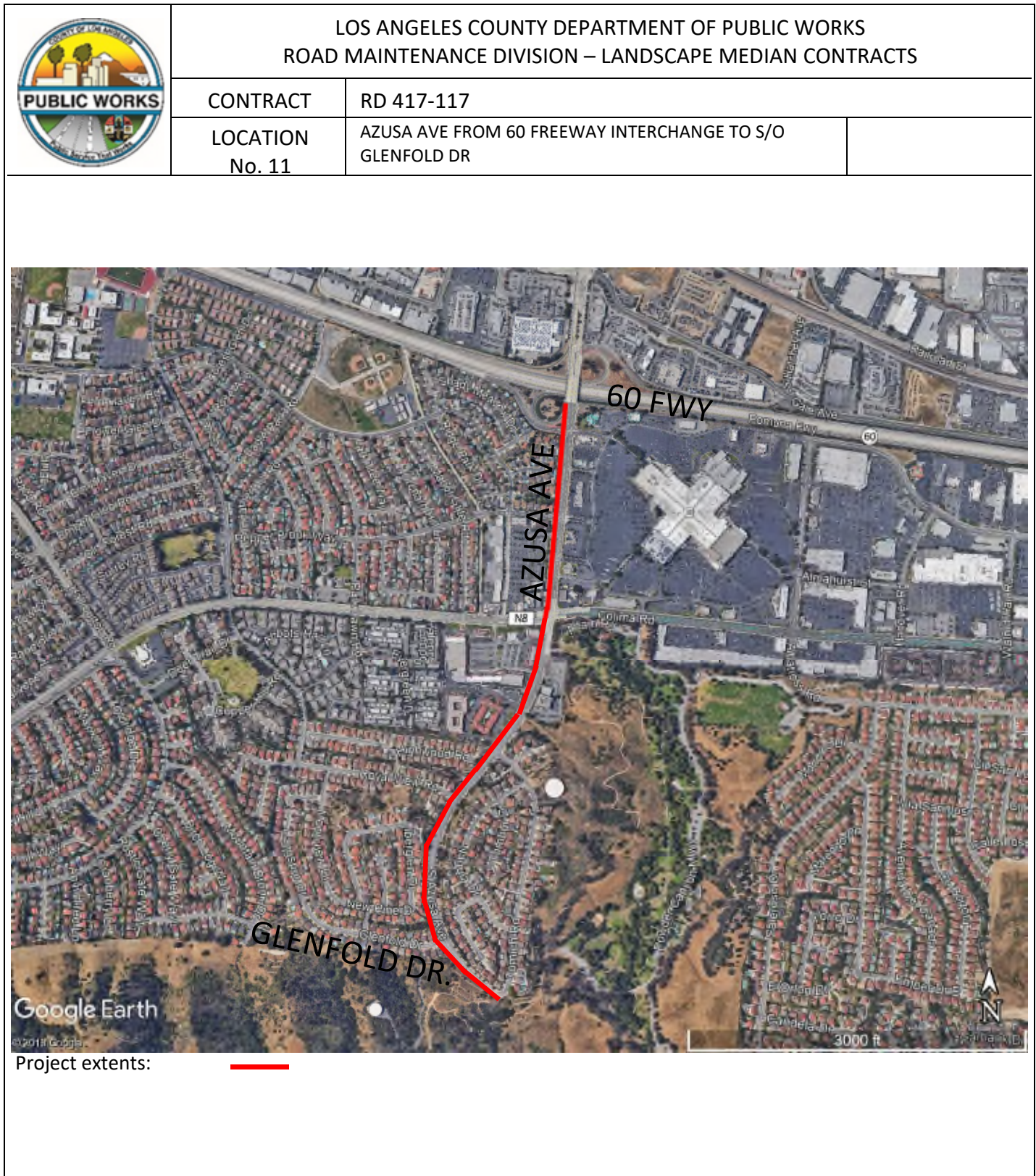
LOS ANGELES COUNTY DEPARTMENT OF PUBLIC WORKS
ROAD MAINTENANCE DIVISION – LANDSCAPE MEDIAN CONTRACTS

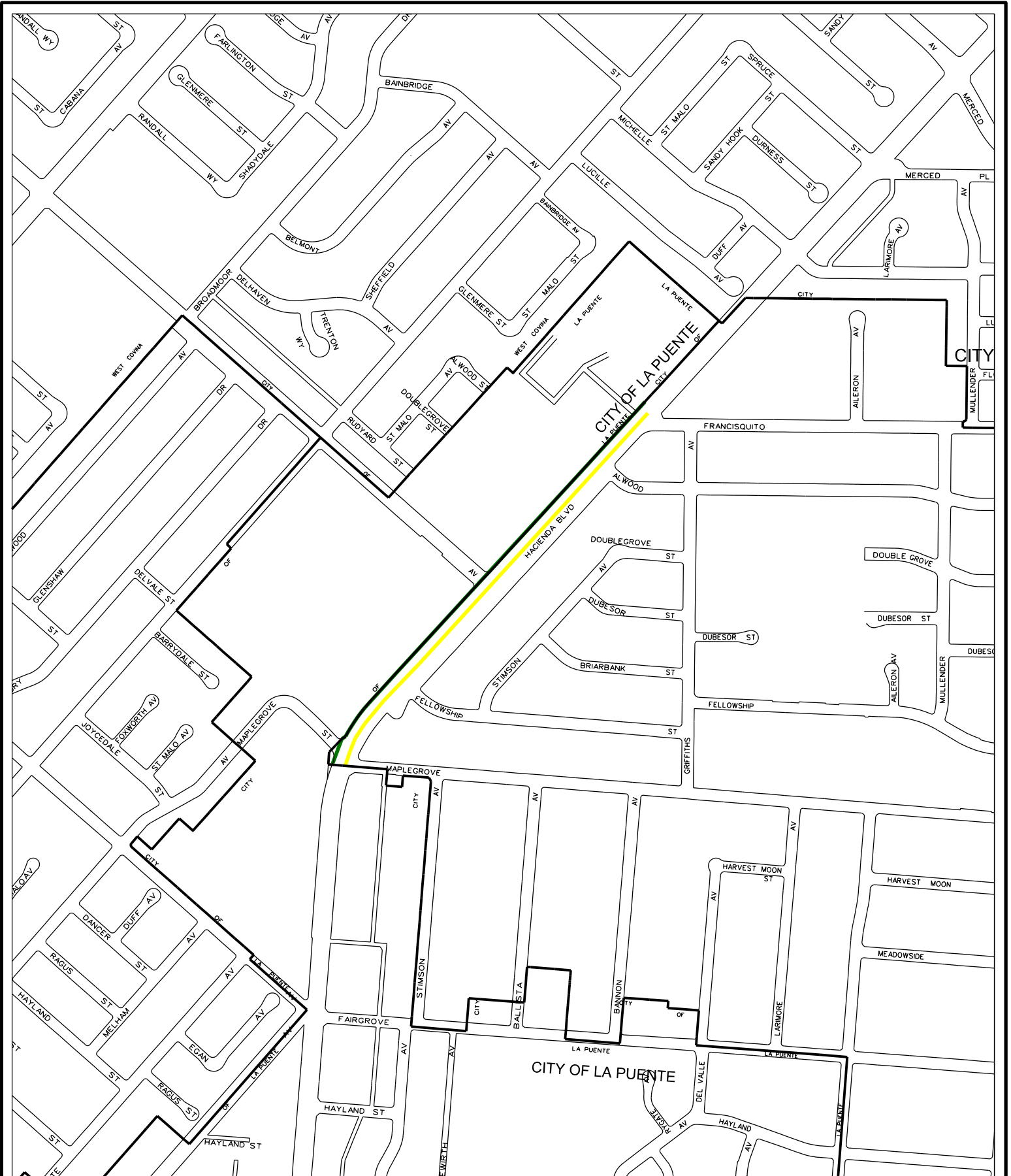
CONTRACT RD 417-117

LOCATION LA PUENTE RD FROM NOGALES ST TO SENTOUS AVE
No. 10 (SOUTH SIDE ONLY)



Project extents: —





- Maintenance side
- Maintenance limits



SD-1 PARKWAY MAINTENANCE LIMITS MAP

RD 417-117

SHEET 1 OF 6

LOCATION NO. 10

LACDPW - R.M.D. 1



- Maintenance side
- Maintenance limits



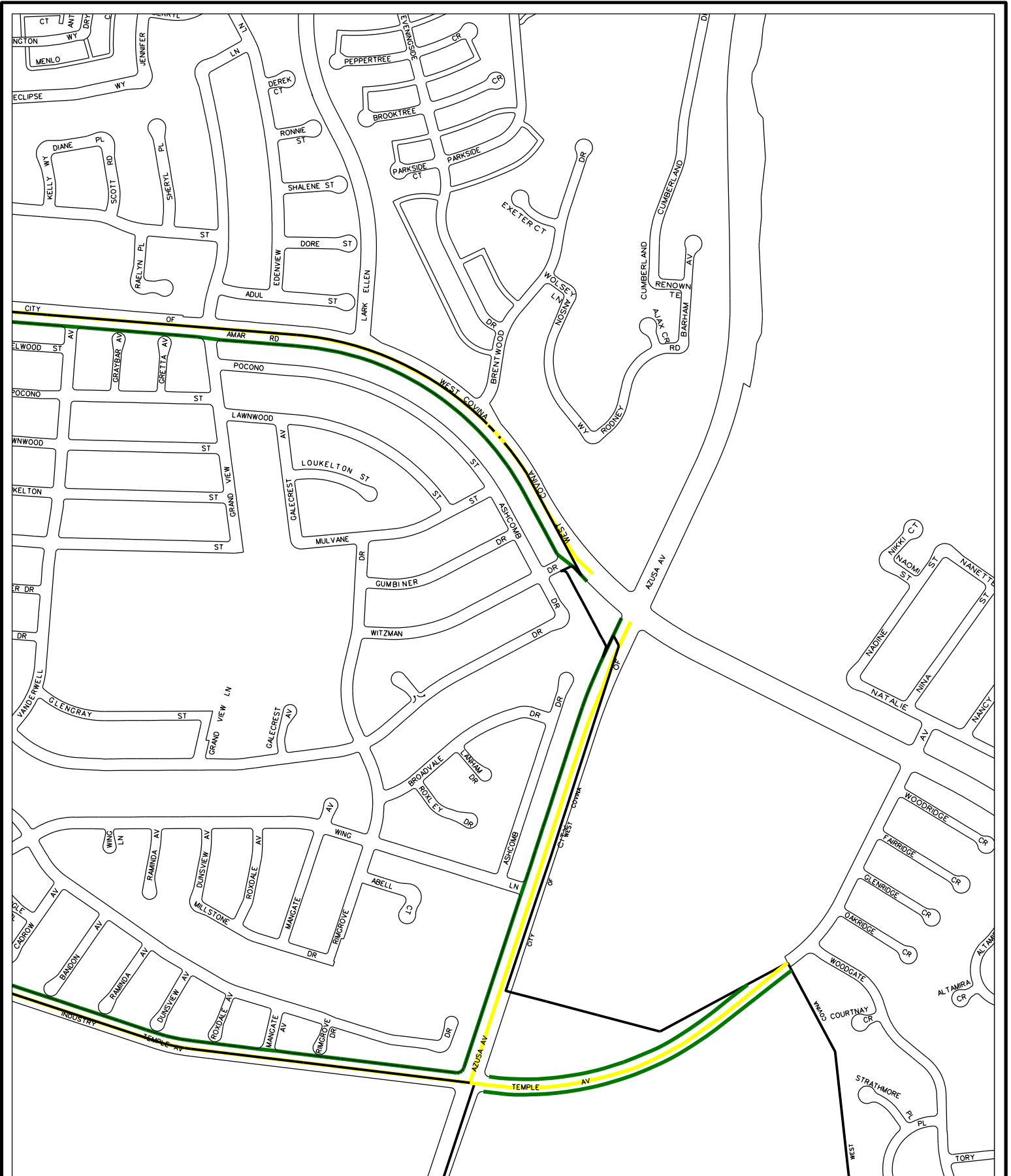
SD-1 PARKWAY MAINTENANCE LIMITS MAP

RD 417-117

SHEET 2 OF 6

LOCATION NO. 10

LACDPW - R.M.D. 1



- Maintenance side
- Maintenance limits



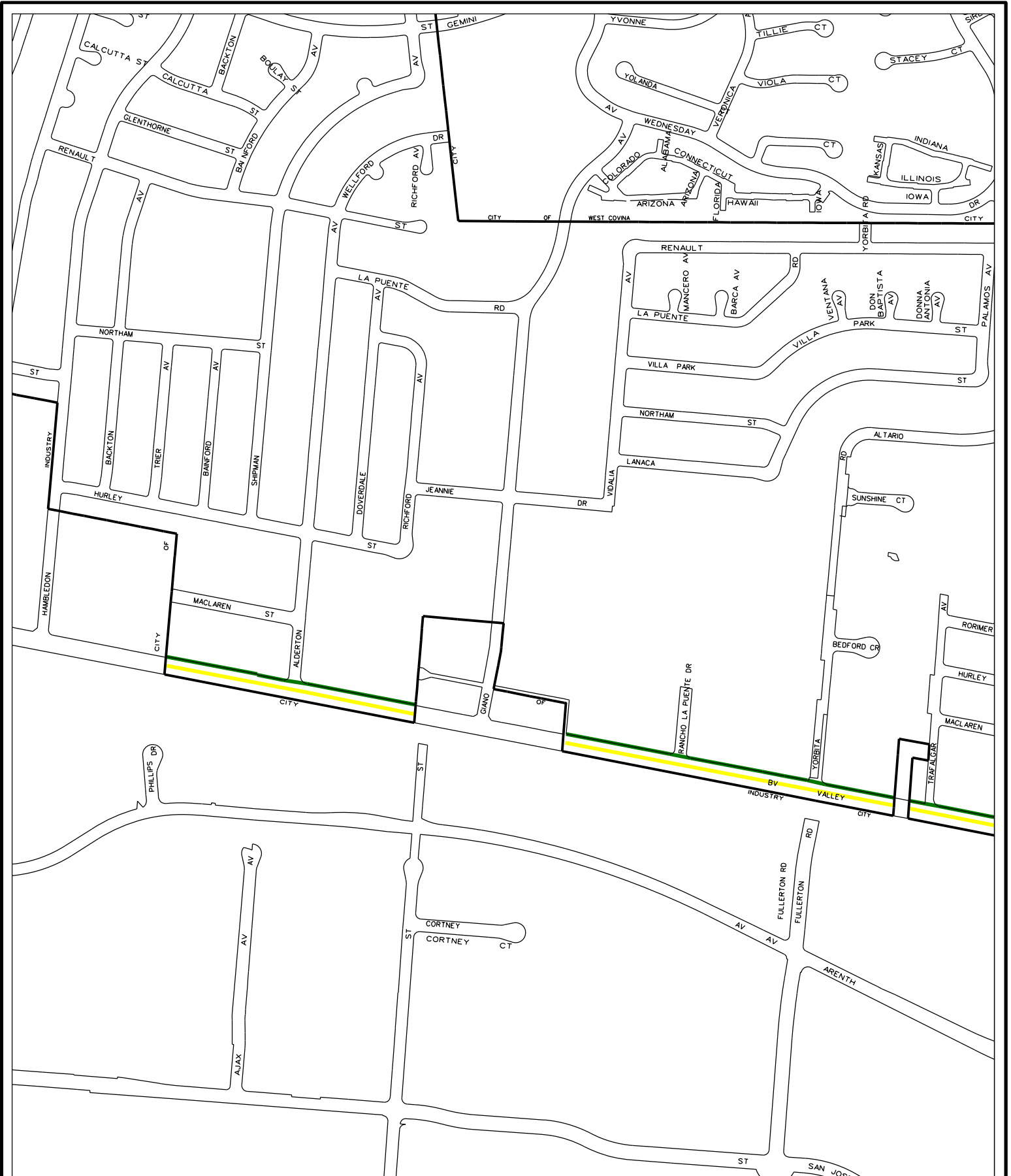
SD-1 PARKWAY MAINTENANCE LIMITS MAP

RD 417-117

SHEET 3 OF 6

LOCATION NO. 10

LACDPW - R.M.D. 1



- Maintenance side
- Maintenance limits



SD-1 PARKWAY MAINTENANCE LIMITS MAP

RD 417-117

SHEET 4 OF 6

LOCATION NO. 10

LACDPW - R.M.D. 1



- Maintenance side
- Maintenance limits



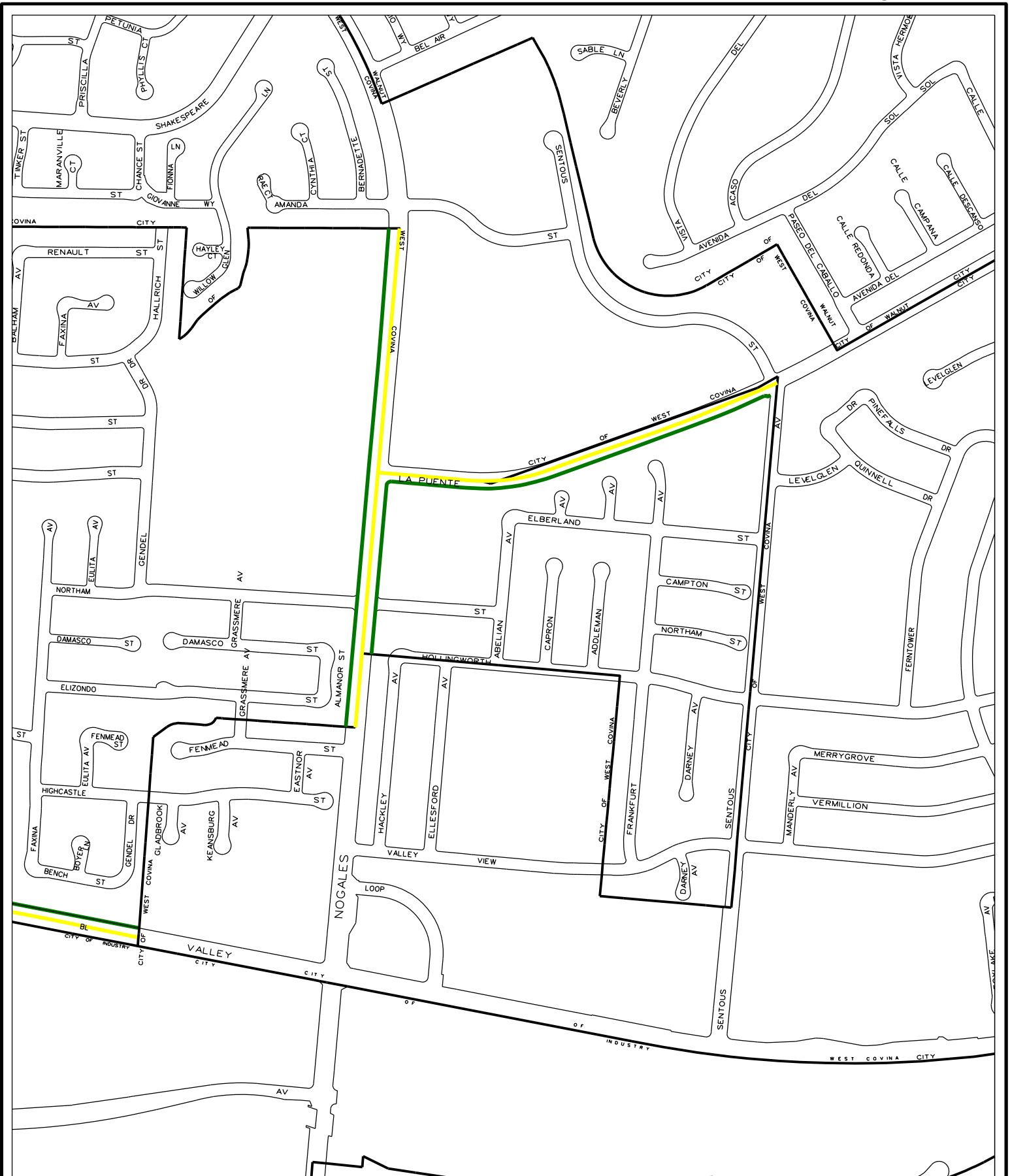
SD-1 PARKWAY MAINTENANCE LIMITS MAP

RD 417-117

SHEET 5 OF 6

LOCATION NO. 10

LACDPW - R.M.D. 1



- Maintenance side
- Maintenance limits



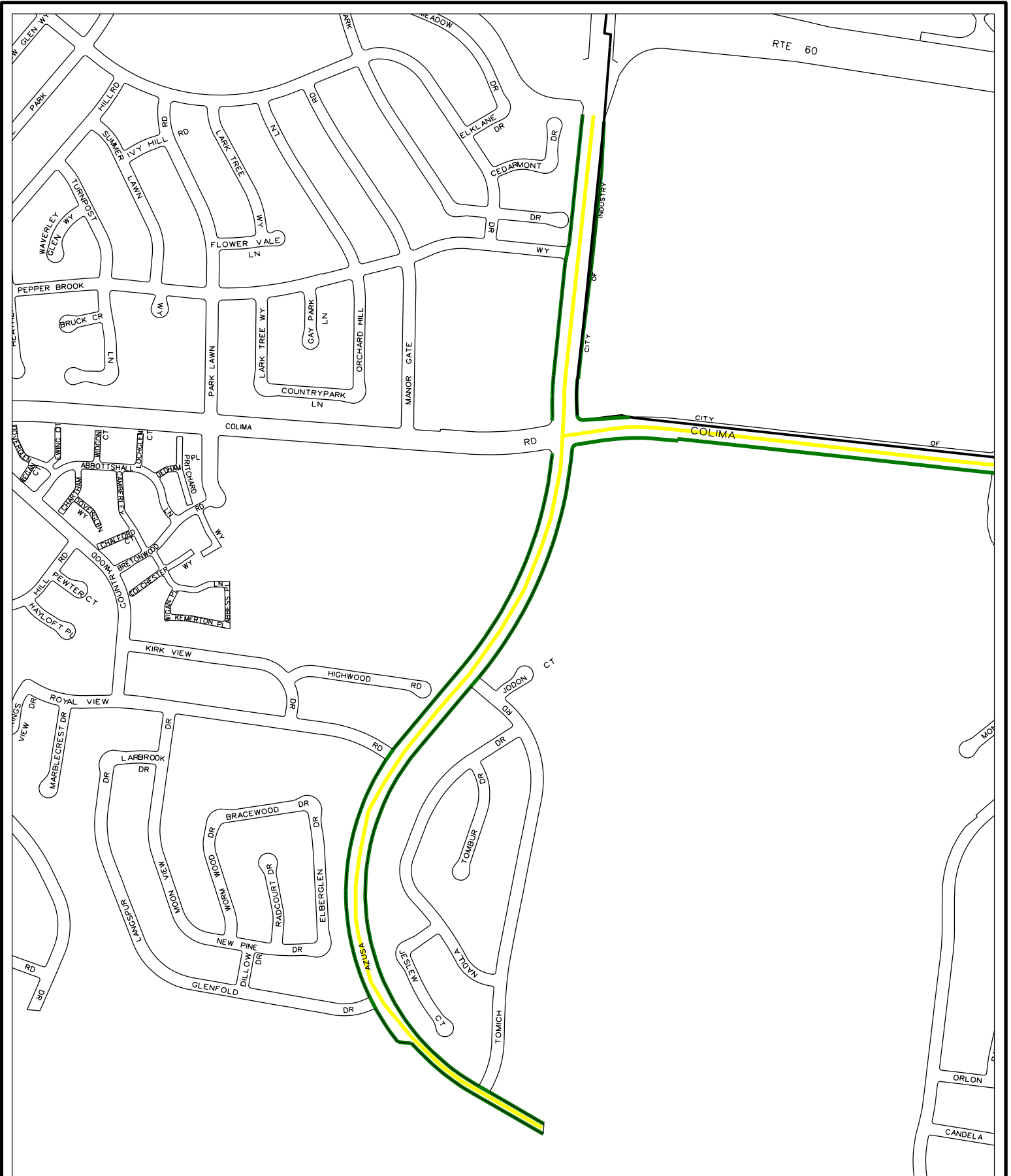
SD-1 PARKWAY MAINTENANCE LIMITS MAP

RD 417-117

SHEET 6 OF 6

LOCATION NO. 10

LACDPW - R.M.D. 1



- Maintenance side
- Maintenance limits



SD-4 PARKWAY MAINTENANCE LIMITS MAP

RD 417-117

SHEET 1 OF 11

LOCATION NO. 11

LACDPW - R.M.D. 1



- Maintenance side
- Maintenance limits



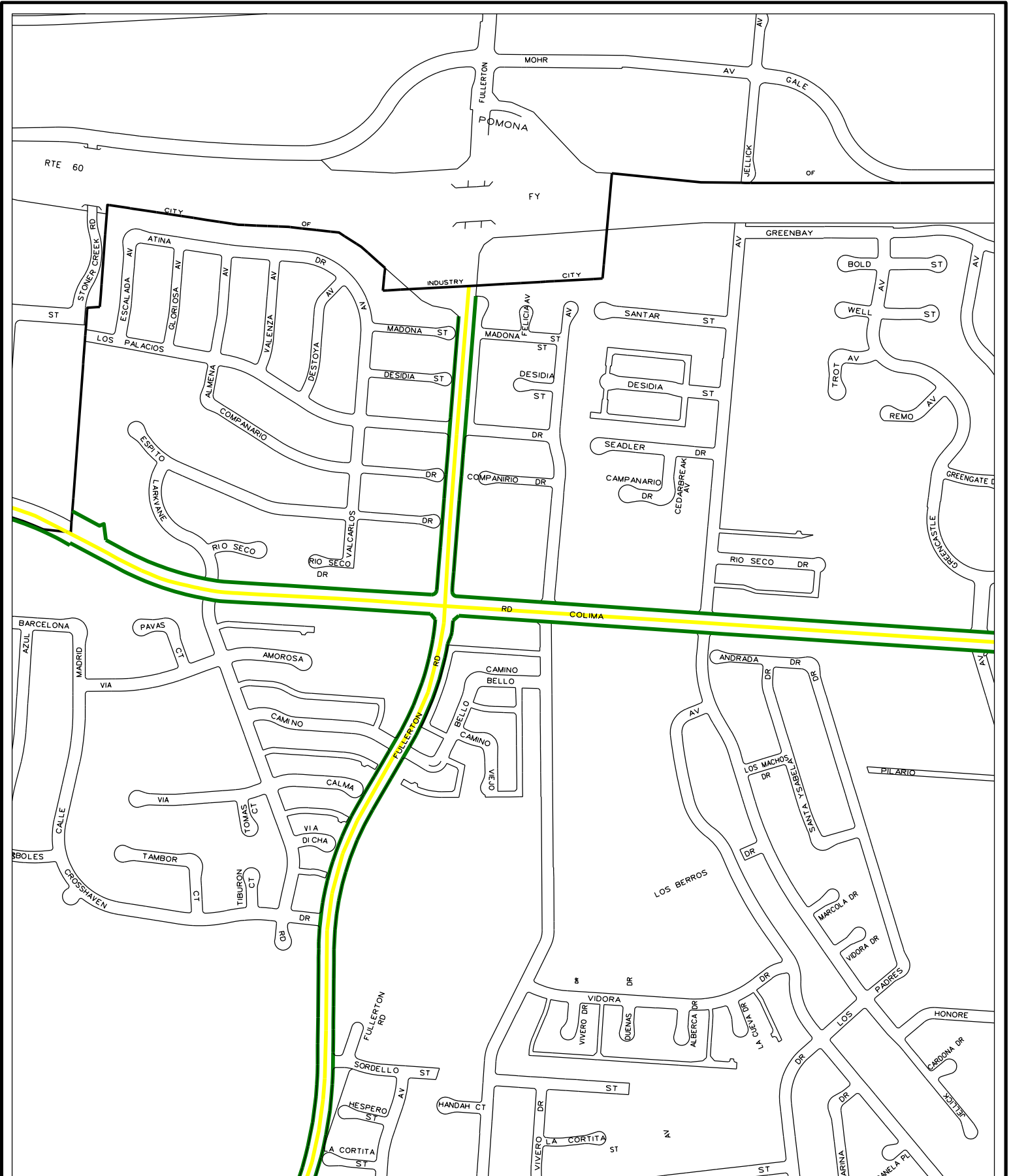
SD-4 PARKWAY MAINTENANCE LIMITS MAP

RD 417-117

SHEET 2 OF 11

LOCATION NO. 11

LACDPW - R.M.D. 1



- Maintenance side
- Maintenance limits



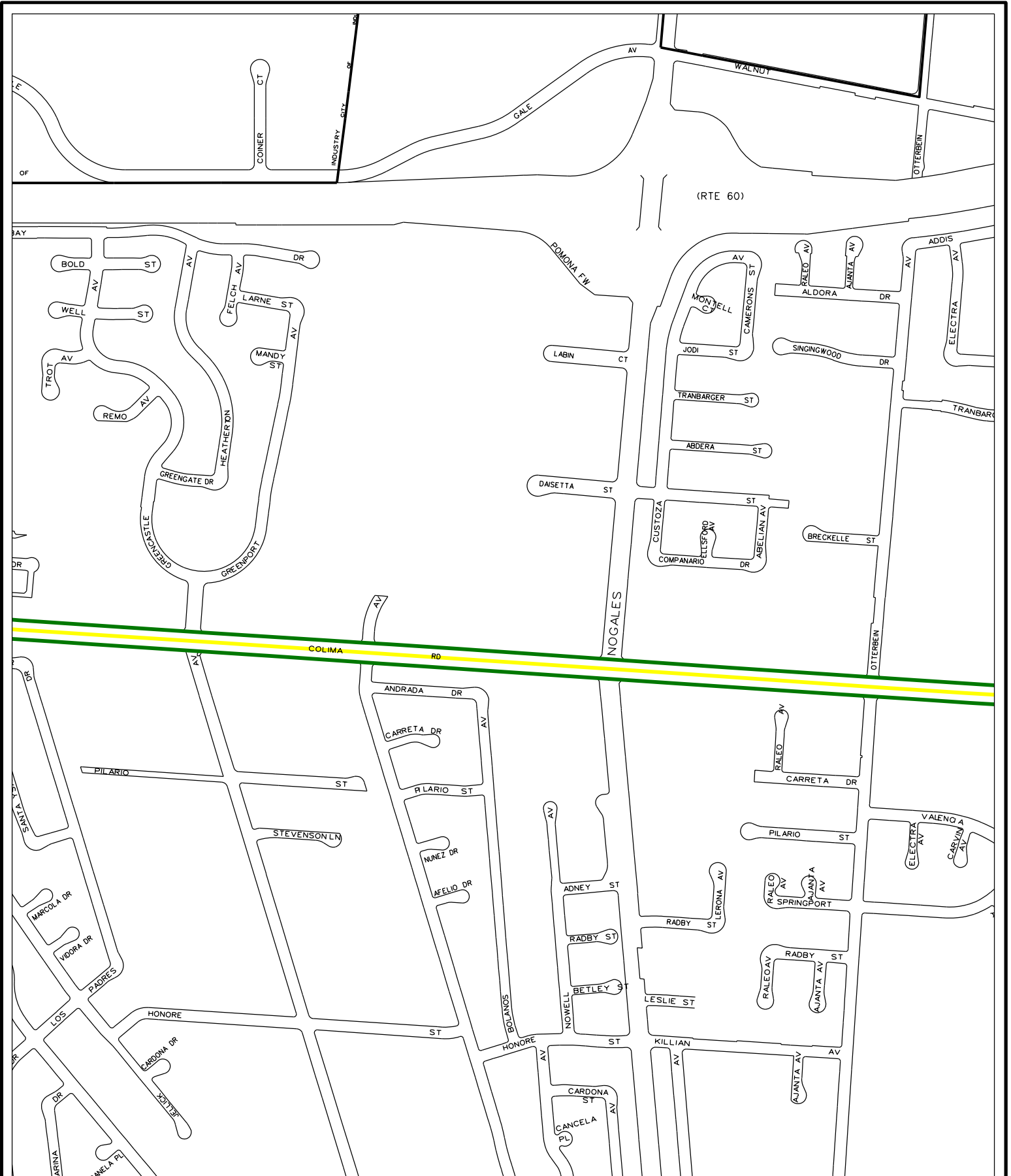
SD-4 PARKWAY MAINTENANCE LIMITS MAP

RD 417-117

SHEET 3 OF 11

LOCATION NO. 11

LACDPW - R.M.D. 1



- Maintenance side
- Maintenance limits



SD-4 PARKWAY MAINTENANCE LIMITS MAP


RD 417-117

SHEET 4 OF 11

LOCATION NO. 11

LACDPW - R.M.D. 1



-  Maintenance side
- Maintenance limits



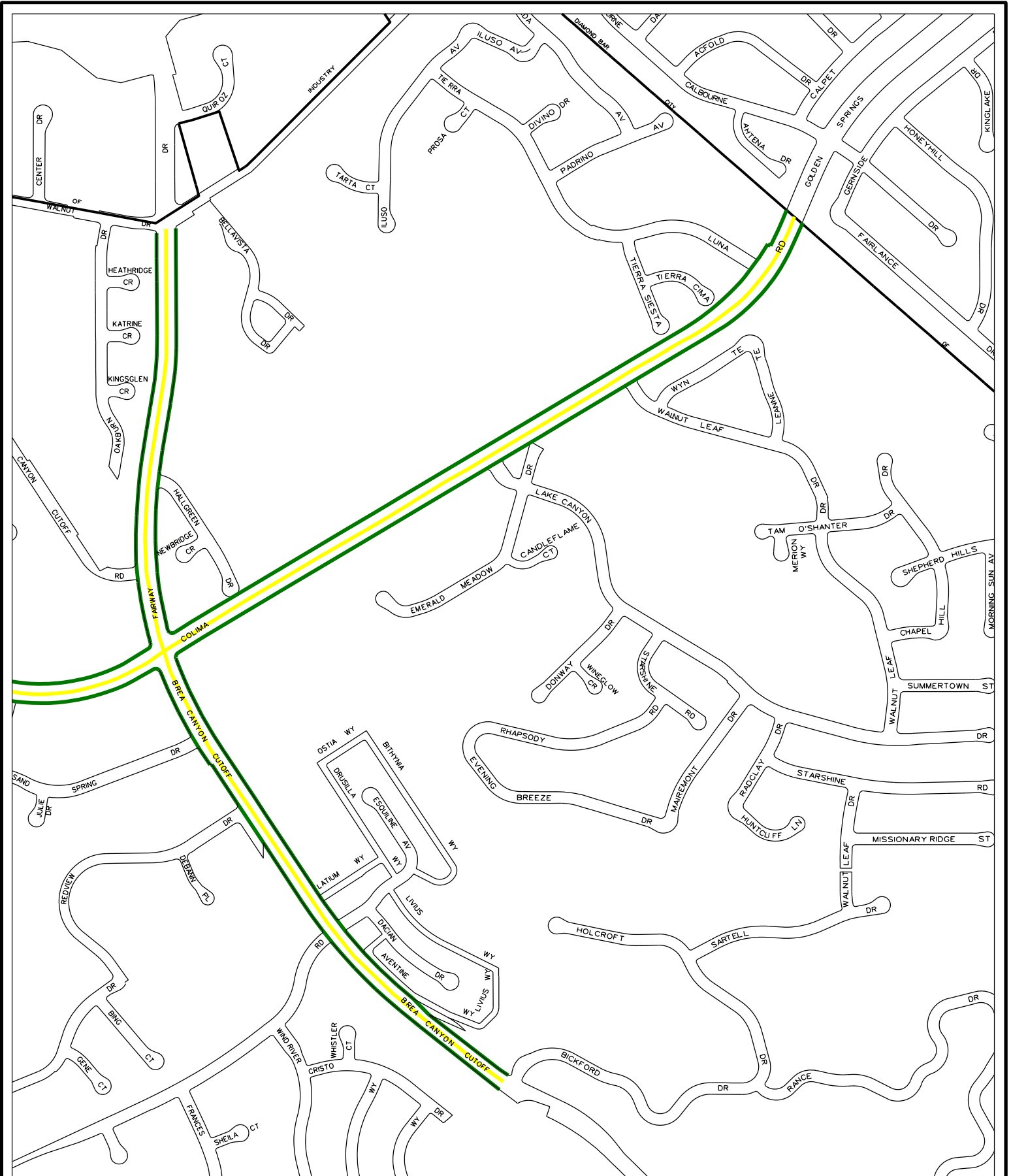
SD-4 PARKWAY MAINTENANCE LIMITS MAP

RD 417-117

SHEET 5 OF 11

LOCATION NO. 11

LACDPW - R.M.D. 1



- Maintenance side
- Maintenance limits



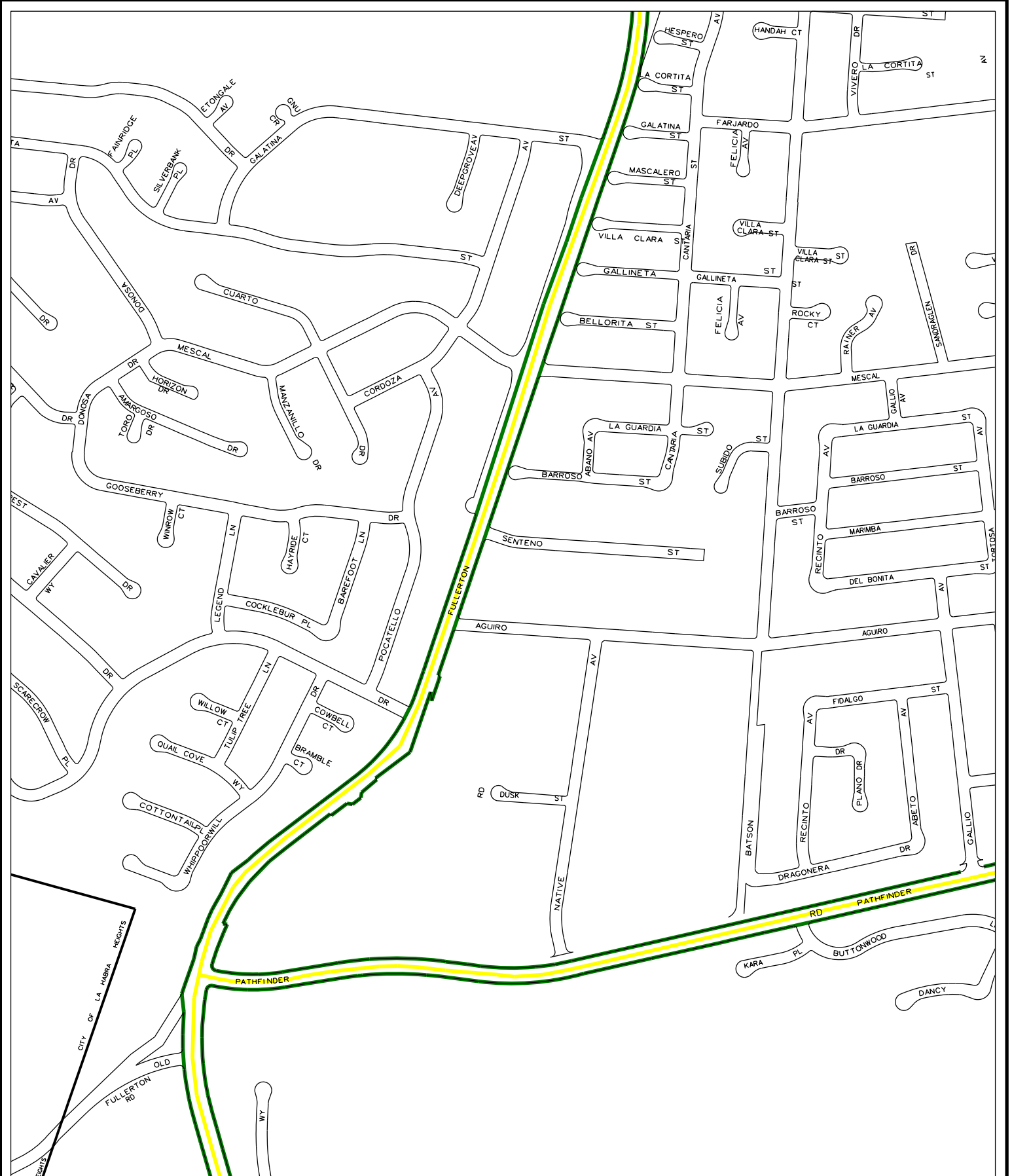
SD-4 PARKWAY MAINTENANCE LIMITS MAP

RD 417-117

SHEET 6 OF 11

LOCATION NO. 11

LACDPW - R.M.D. 1



- Maintenance side
- Maintenance limits



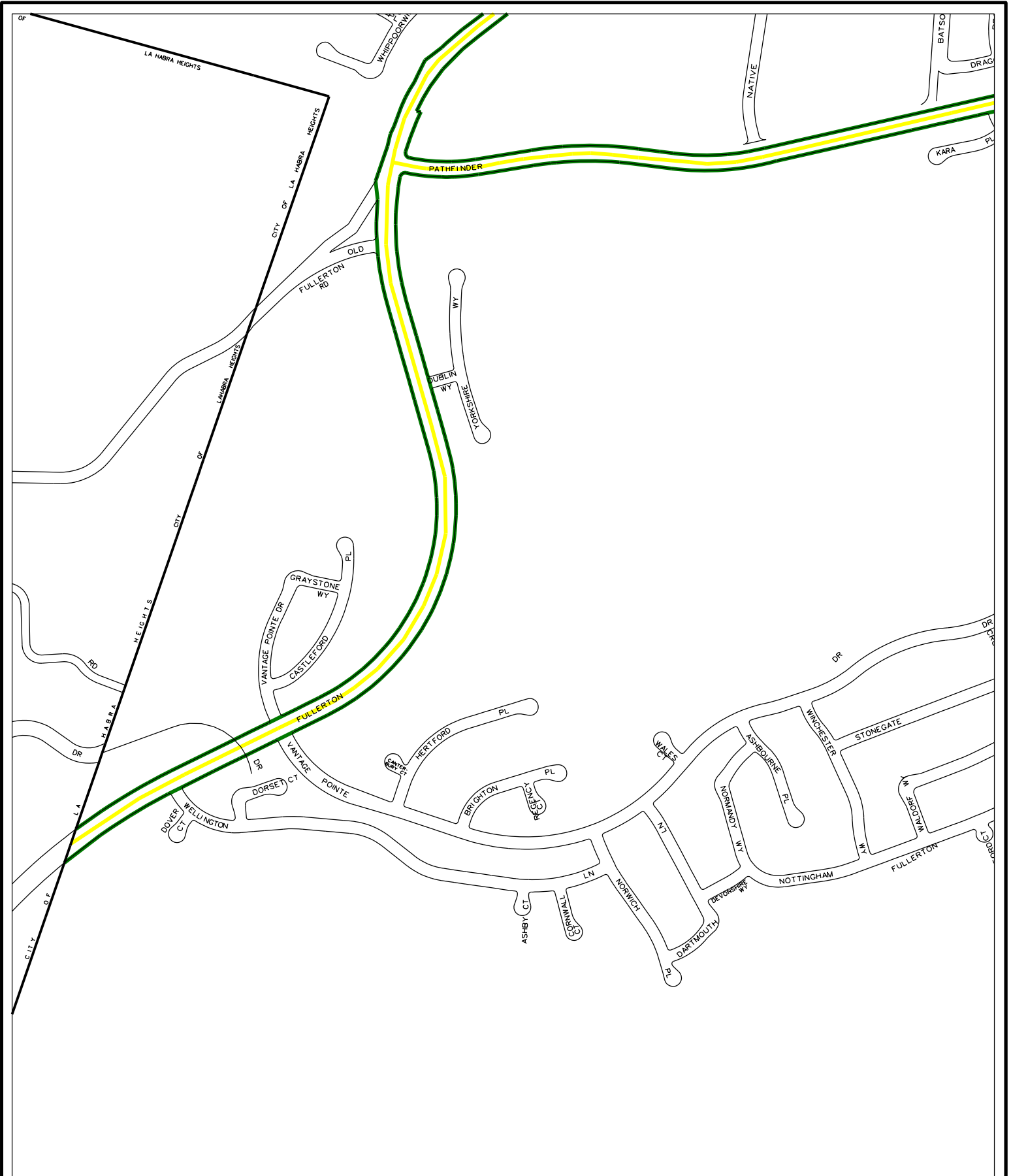
SD-4 PARKWAY MAINTENANCE LIMITS MAP

RD 417-117

SHEET 7 OF 11

LOCATION NO. 11

LACDPW - R.M.D. 1



- Maintenance side
- Maintenance limits



SD-4 PARKWAY MAINTENANCE LIMITS MAP

RD 417-117

SHEET 8 OF 11

LOCATION NO. 11

LACDPW - R.M.D. 1



- Maintenance side
- Maintenance limits



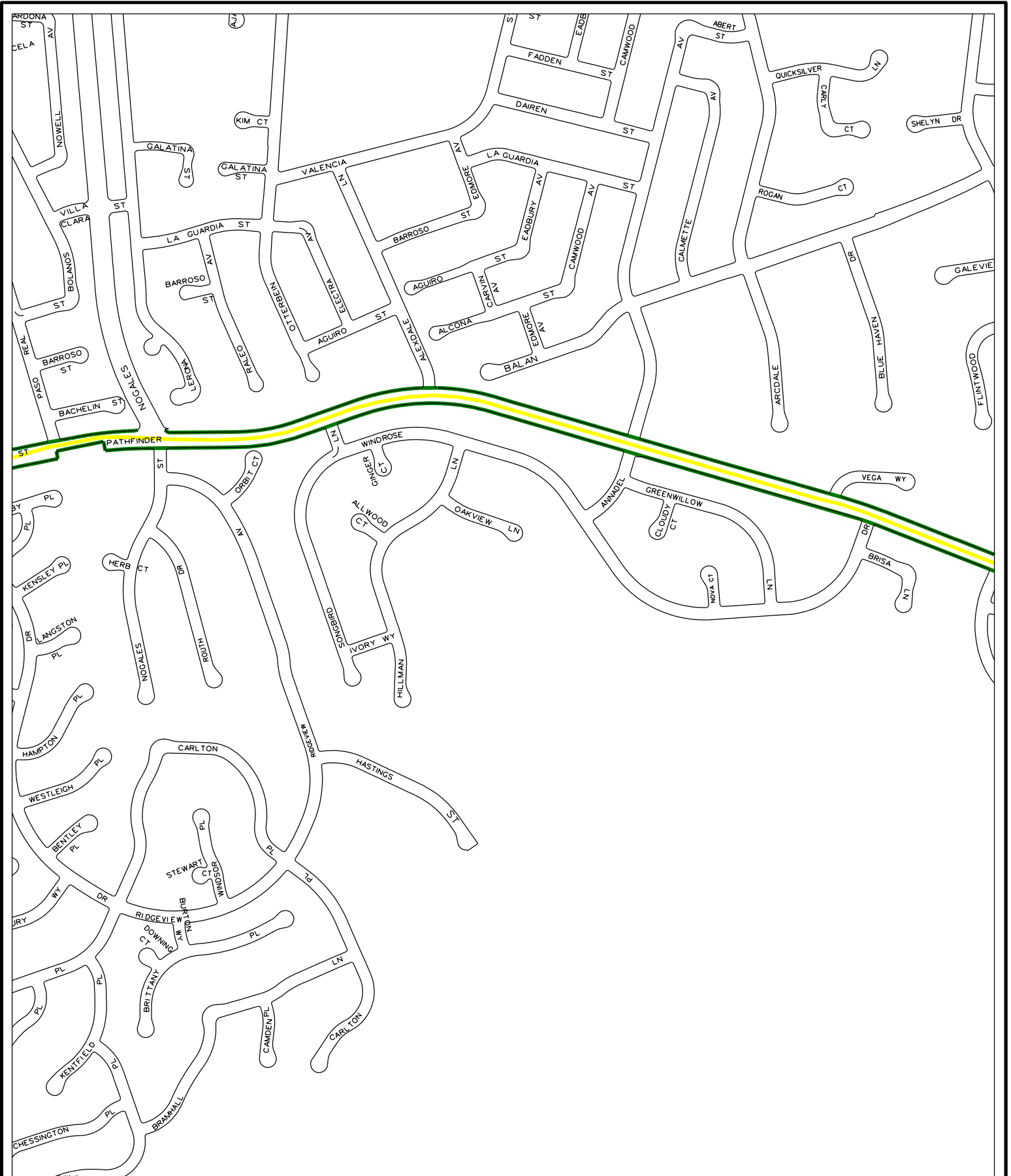
SD-4 PARKWAY MAINTENANCE LIMITS MAP

RD 417-117

SHEET 9 OF 11

LOCATION NO. 11

LACDPW - R.M.D. 1



- Maintenance side
- Maintenance limits



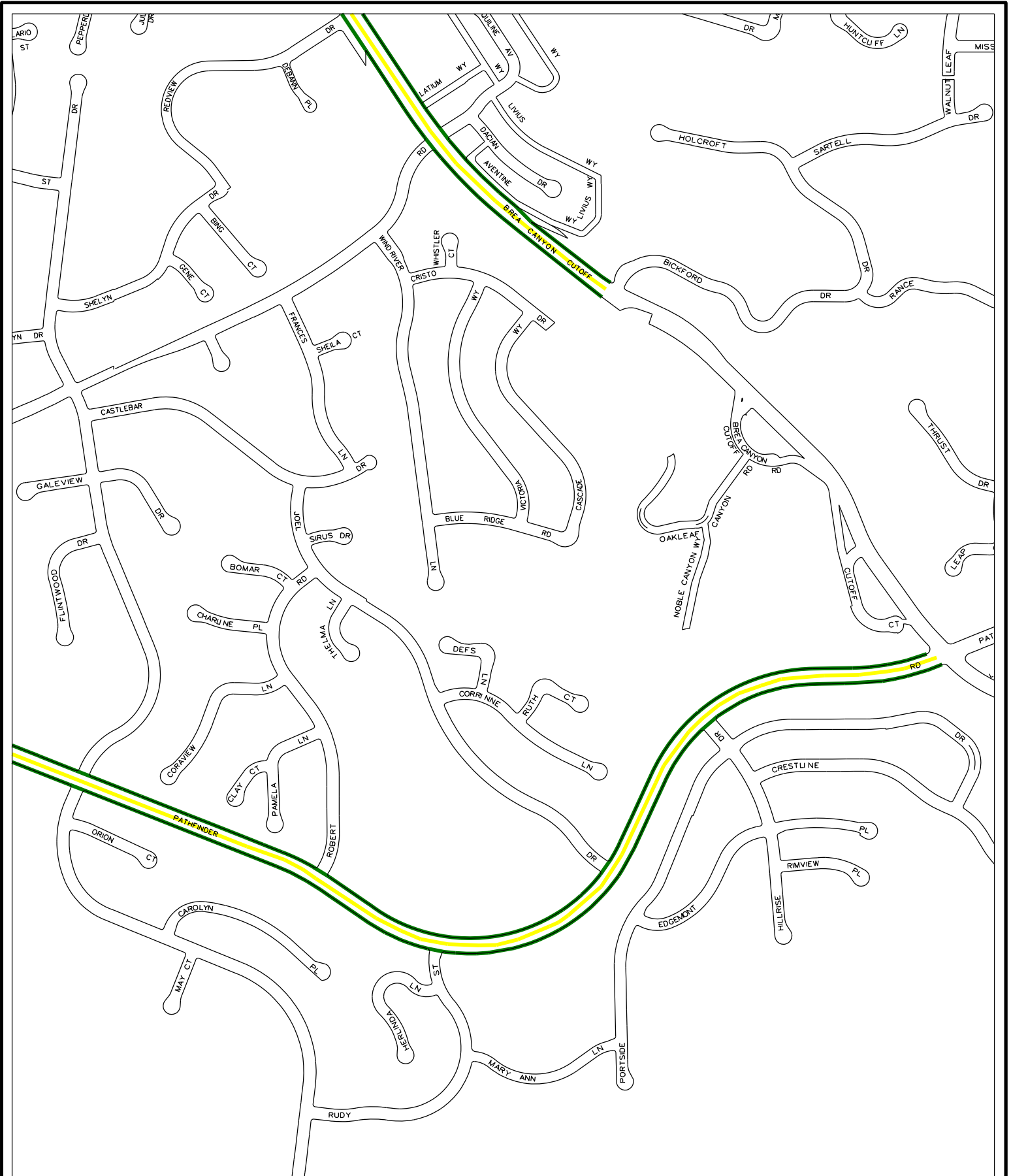
SD-4 PARKWAY MAINTENANCE LIMITS MAP

RD 417-117

SHEET 10 OF 11

LOCATION NO. 11

LACDPW - R.M.D. 1



- Maintenance side
- Maintenance limits



SD-4 PARKWAY MAINTENANCE LIMITS MAP

RD 417-117

SHEET 11 OF 11

LOCATION NO. 11

LACDPW - R.M.D. 1