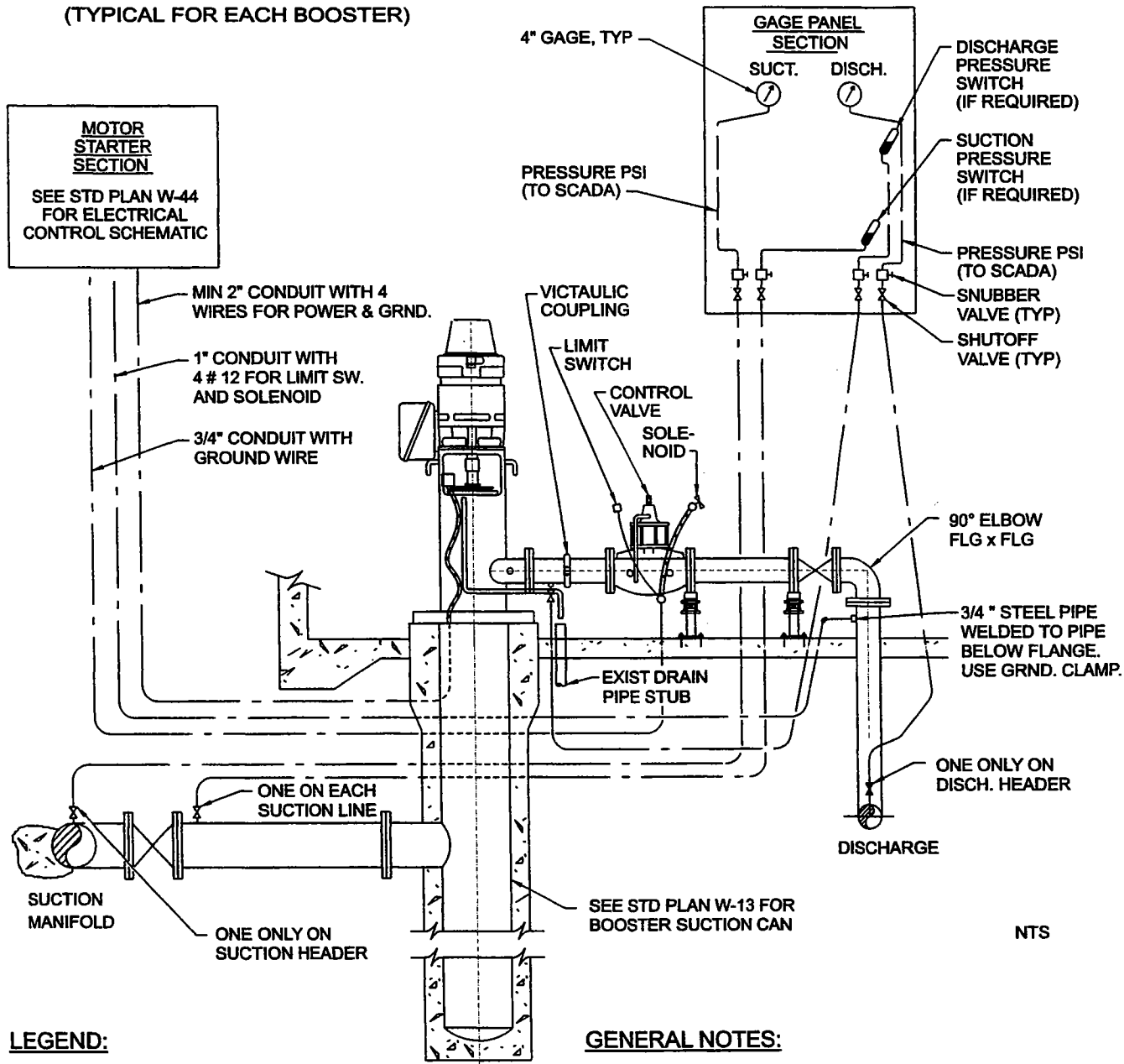


BOOSTER CONTROLS

(TYPICAL FOR EACH BOOSTER)

MOTOR STARTER SECTION
SEE STD PLAN W-44 FOR ELECTRICAL CONTROL SCHEMATIC



LEGEND:

- 1/4" COPPER TUBING
IN PVC CONDUCTOR TUBING
- ⊙ SUCTION GAGE
- ⊙ DISCHARGE GAGE
- ⊙ PRESSURE SWITCH

GENERAL NOTES:

1. GAGE PANEL SHALL NOT BE INSTALLED ABOVE ELECTRICAL PANEL.
2. PRESSURE SWITCHES FOR PUMP SUCTION AND DISCHARGE PRESSURES MAY BE REQUIRED IN GAGE PANEL, DEPENDING ON APPLICATION.
3. PLACE VICTAULIC COUPLING BETWEEN BOOSTER AND CLA-VALVE UNDER NORMAL CONDITIONS. IF HIGH PRESSURE, PLACE VICTAULIC COUPLING AFTER CLA-VALVE.

NTS

LOS ANGELES COUNTY WATERWORKS DISTRICTS

DEPARTMENT OF PUBLIC WORKS

STANDARD PLAN

W-45

APPROVED

Max Red
ASSISTANT DEPUTY DIRECTOR

APRIL 2004

DATE

SHEET 1 OF 1