

Sediment Management Strategic Plan

IRWMP Leadership Committee
February 23, 2011



LA County Flood Control District System





San Gabriel River



Big Tujunga Dam and Reservoir



Debris Basins



Rio Hondo Spreading Grounds



Why Sediment Management?

All District facilities, and their regional Flood Control and Water Conservation benefits are impacted by sediment.

The system, built decades ago, needs to be closely managed to remain effective.





East San Fernando Valley – 1890s



East San Fernando Valley Present Day

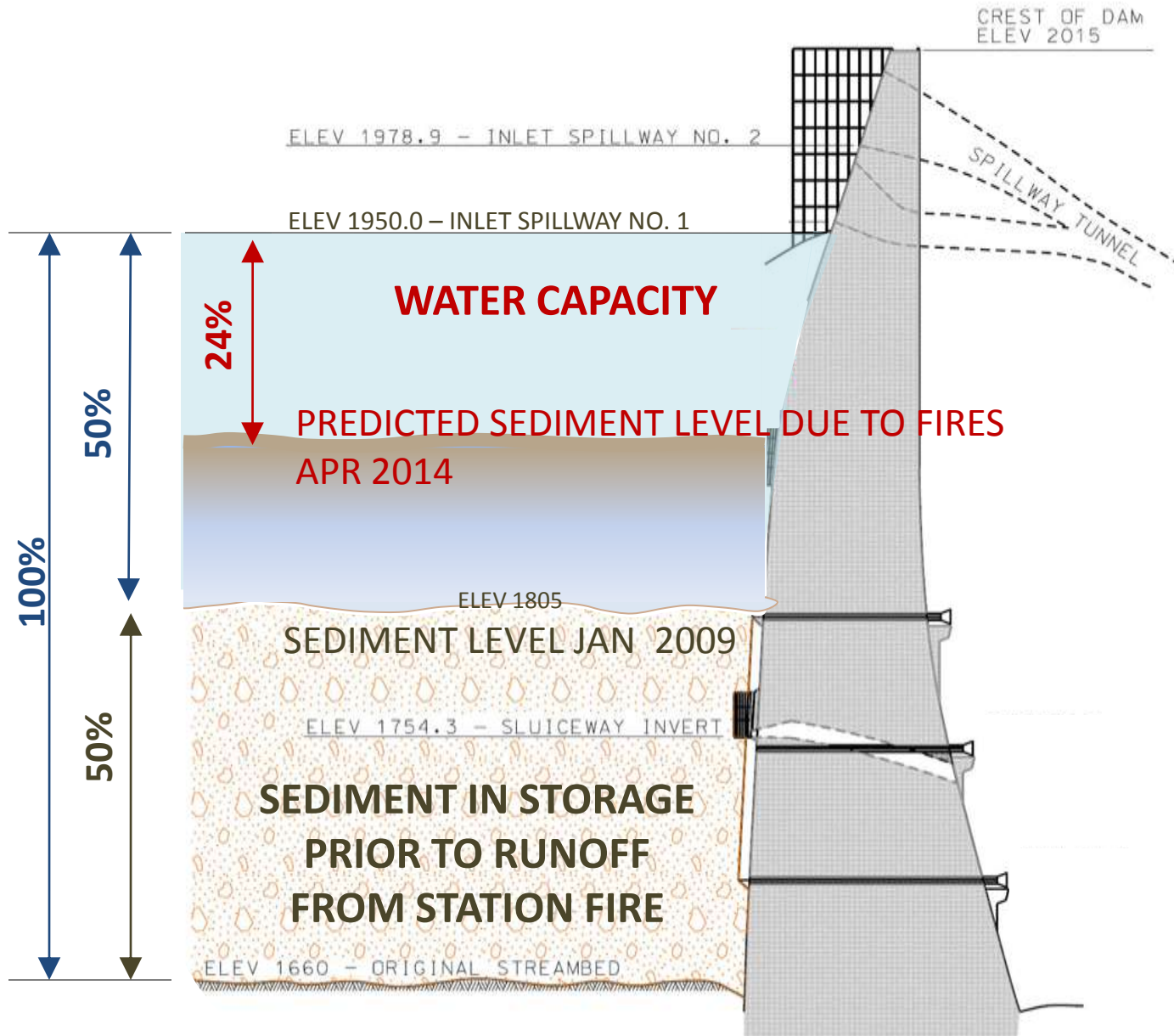
Impact to FCD Facilities



Big Tujunga Dam and Reservoir Post-Station Fire



Pacoima Reservoir Post-Station Fire

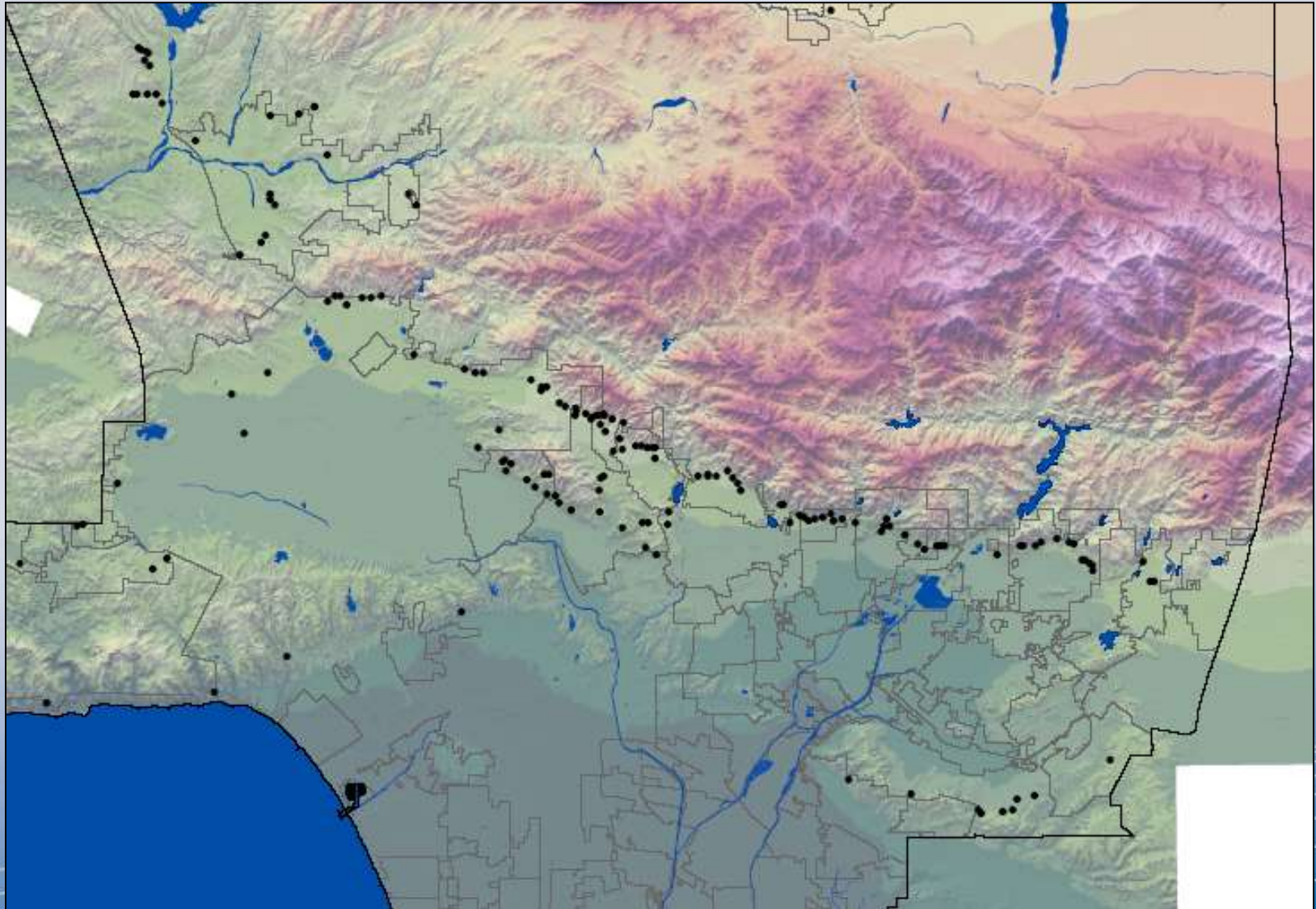




Dunsmuir Debris Basin

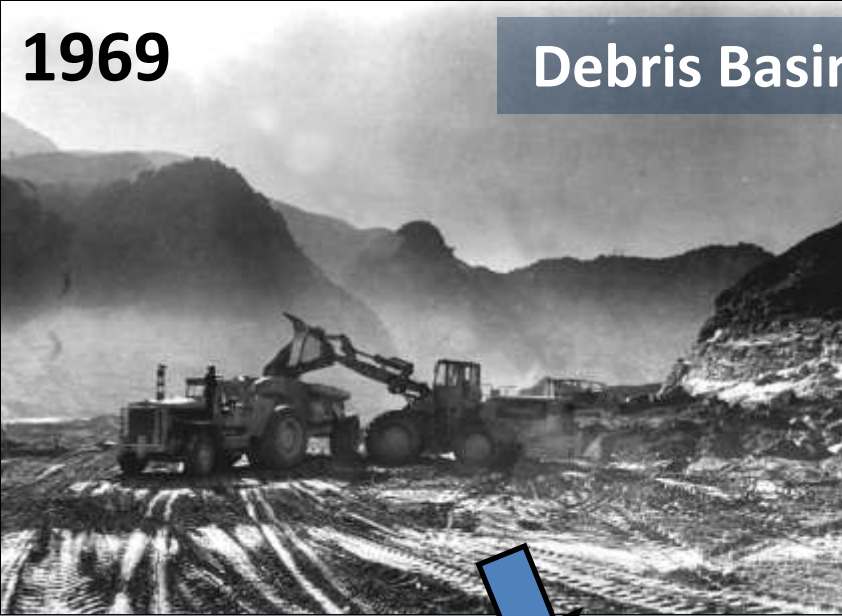


Debris Retaining Facilities



Sediment Management - Past & Present

1969



Debris Basins Cleanouts

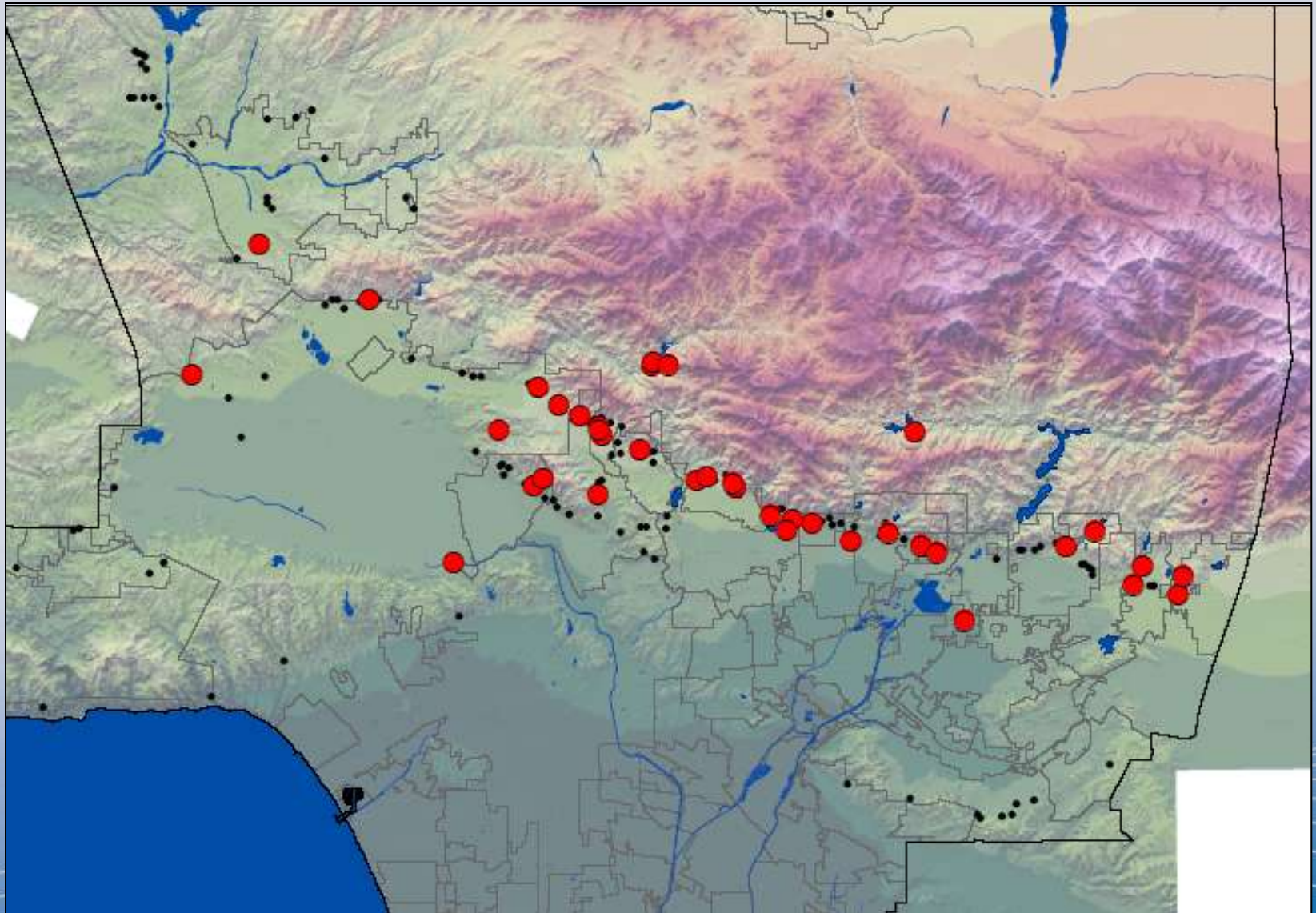
2010



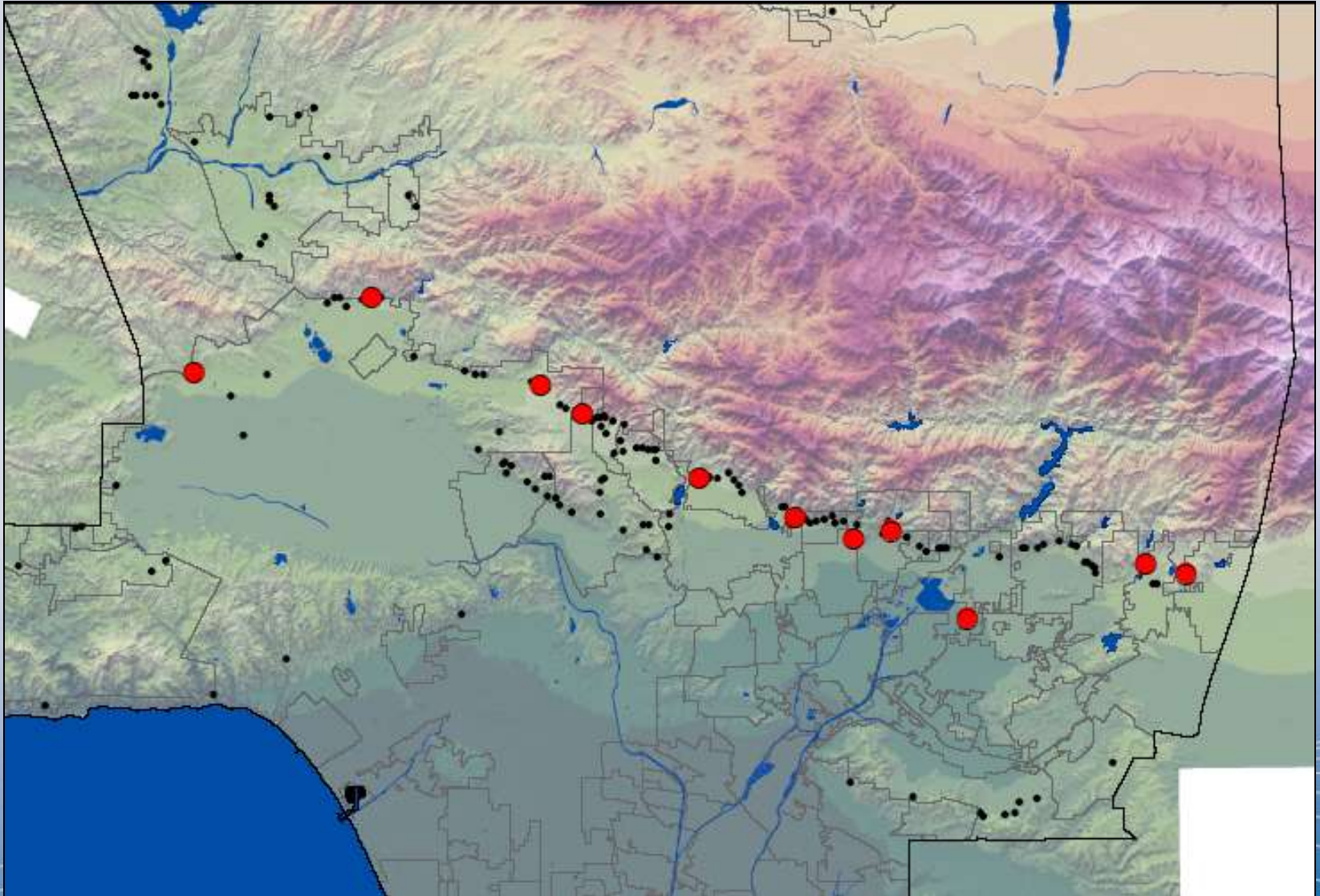


May Sediment Placement Site

Historic Sediment Placement Sites



Current Sediment Placement Sites






Sediment Management Strategic Plan

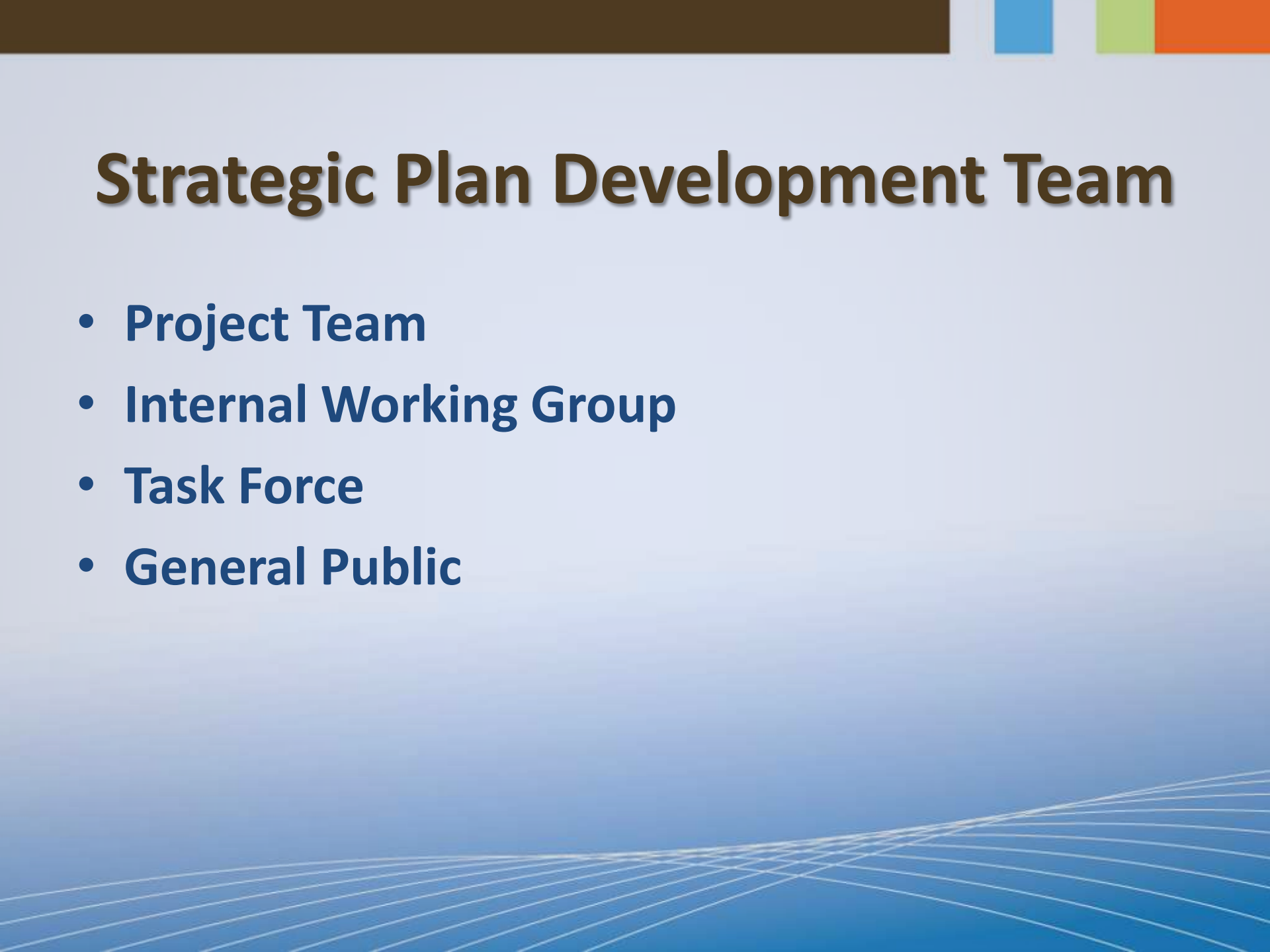
Goal:

Manage sediment in order to provide for the flood protection and water conservation needs of the region while balancing environmental, social, and economic impacts.





Strategic Plan Development Team

- **Project Team**
 - **Internal Working Group**
 - **Task Force**
 - **General Public**
- 

Potential Sediment Transport Methods



Potential Sediment Uses



Potential Sediment Placement Alternatives



Considerations, Constraints, and Challenges

- **Cost**
- **Impact to the environment**
 - Storm season cleanouts
 - Environmental Regulations
- **Impact to neighborhoods**
- **Time constraints:**
 - Storm season cleanouts
 - Permitting, approval, right-of-way acquisition
- **Limits on organic content for reuse and placement of sediment**

Timeline

Early 2011

Forecast needs for 2012 - 2032



2011

Explore, evaluate, and refine sustainable sediment management strategies



2012

Complete
Draft Sediment Management Strategic Plan



Thank you

Presented by:
Dan Sharp, P.E.
dsharp@dpw.lacounty.gov