

# San Gabriel Valley Airport



## Serving General Aviation and the San Gabriel Valley since 1936

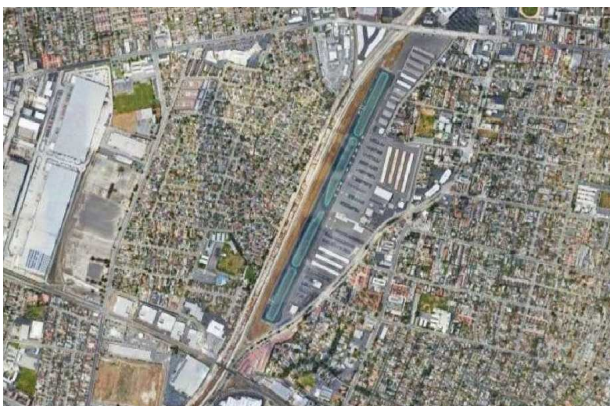
Located in the heart of the San Gabriel Valley, San Gabriel Valley Airport, formerly known as El Monte Airport, facilitated over 93,000 general aviation aircraft takeoffs and landings in 2024. The airport is home to over 250 based aircraft and various aviation businesses and non-profit aviation organizations. With an Air Traffic Control Tower operating daily, state-of-the-art navigational aids, and an advanced weather reporting Automated Weather Observing System (AWOS), the airport safely and efficiently accommodates a wide range of fixed-wing and rotary-wing aircraft ranging from small two-seat, single-engine propeller aircraft up to much larger and higher capacity turbo-prop and jet aircraft.

Owned and operated by the County of Los Angeles, the airport is self-sufficient. All income generated by the County at the airport is reinvested back into the airport or the County's system of airports.

In 2019, the County completed a \$5 million capital improvement project at the airport that included the comprehensive rehabilitation of 48 acres of paved apron.

The airports do not draw any funds from the County's General Fund. The majority of funding for airport capital projects comes from Federal Airport Improvement Program grants or State grants from the California Department of Transportation Division of Aeronautics. Additional funding for capital and other projects comes from the County's Aviation Enterprise Fund.

Overall, the airport plays a vital role in the nation's integrated system of airports and is a valuable asset to the local communities, serving the diverse constituents of the San Gabriel Valley and the



San Gabriel Valley Airport  
4233 N. Santa Anita Avenue  
El Monte, California 91731

### COMMUNITY BENEFITS:

#### General Aviation Products, Services, and Facilities

- \* Business / Corporate Travel
- \* Aircraft Charter / Air Taxi
- \* Flight Training
- \* Personal Flying (Recreation and Training)
- \* Utility/Pipeline Patrol & Inspection
- \* Aerial Surveying & Observation
- \* Aircraft Storage
- \* Aviation Businesses (Aircraft Fueling, Maintenance/Repair, and Rental, Sale of Parts and Supplies, etc.)

#### Emergency Preparedness & Response

- \* Aerial Fire Fighting Support (utilized by L.A. County Fire, U.S. Forest Service, and other support agencies)
- \* Law Enforcement/National Security (Utilized frequently by El Monte Police Department Air Unit)
- \* Disaster Relief
- \* Search & Rescue

#### Community Services & Facilities

- \* Aeromedical / Air Ambulance Flights
- \* News, Weather & Traffic Reporting
- \* Events (Annual Air Fair, Airport Tours, etc.)
- \* Youth Organizations / Educational Programs
- \* Restaurant and Meeting Facilities
- \* Aircraft Viewing Area

#### Destination & Special Events

- \* Local and regional tourism
- \* Irwindale Speedway (4.5 mi.), Santa Anita Park and The Arboretum (5 mi.), Pasadena Rose Bowl (13 mi.)

#### Employment

- \* The airport directly supports approximately 141 jobs. Accounting for the multiplier effect, the airport creates roughly 215 jobs, with associated labor income of nearly \$11.5 million annually.

#### Economic Impact

- \* The airport and the surrounding communities benefit from the estimated \$25.9 million in total airport-related (direct, indirect and induced) spending each year.

(General Aviation includes all civilian flying exclusive of scheduled passenger airlines and military.)

