

The Consolidated Sewer Maintenance District of Los Angeles County (CSMD) is administered by the County of Los Angeles Department of Public Works.

**The District's system serves and includes:**

 **500,000+** parcels

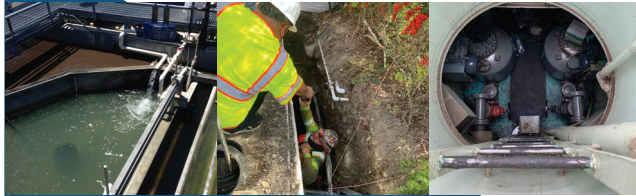
 **2 million+** people within the county's unincorporated areas (Marina del Rey not included)

 **38** cities + **3** contract cities

 **4,600 miles** of sanitary sewers

 **155** pump stations





 **4** water treatment plants



**OUR GOALS**

- Reduce sewer overflows
- Protect public health
- Protect the environment
- Keep the people of LA County thriving in a safe, clean and sustainable environment

**LET'S RECAP!**

-  LA County Public Works provides sewer maintenance services for 37 cities and the unincorporated areas of the county.
-  In the case of a sewer overflow or any sewer-related emergency, call Public Works at **1-800-675-HELP (4357)**.
-  Public health, recreational areas and natural spaces, general infrastructure, and businesses are directly affected and dependent on sewer maintenance services.
-  Public Works provides many essential services to the community, including ongoing sewer maintenance which protects public health and the environment and keeps our communities safe.



**CONTACT US!**

**General Sewer Maintenance comments/questions:**

1-626-300-3399

**Sewage OverflowHELpline:**

1-800-675-HELP (4357)

**Learn more about LA County Public Works at:**

**[pw.lacounty.gov/smd/smd](http://pw.lacounty.gov/smd/smd)**



**LOS ANGELES COUNTY PUBLIC WORKS**

*Providing sewer maintenance services to protect the public and the environment in a highly efficient, effective, and responsible manner.*

**Los Angeles County Public Works is here to help!**

## Taking action to reduce sewer overflows, protecting our health, communities, and environment.

When sewer systems are not maintained, it can cause blockages, flooding, and pollution. Maintaining the sewer system and protecting public safety requires actions on three levels: **large-scale, local, and individual.**



### Large-Scale Actions

#### What large-scale actions does Public Works take to maintain the sewer system?

System failure can range from pump station malfunctions to sanitary sewer overflows. Proper maintenance is vital for a clean environment and a healthy society.

LA County Public Works is committed to working with County and local partners to maintain and enhance the current level of service for all sewer maintenance customers, from ongoing operations and maintenance to providing 24/7 emergency services.

Sewer maintenance services are crucial to protecting human health and the environment and keeping our communities safe.



Learn more about the LA County Public Works and resources near you at:  
[bit.ly/PublicWorks-SMD](https://bit.ly/PublicWorks-SMD)



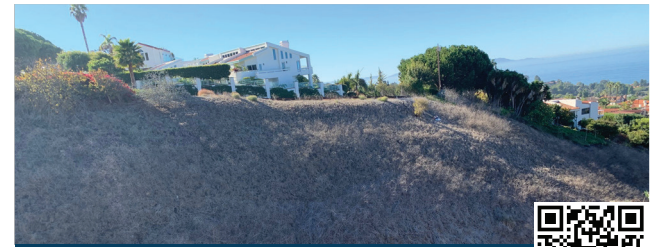
### Local Actions

#### What actions is Public Works taking at the local level to reduce sewer overflows, blockages, and pollution and protect human health?

Proper sewer maintenance is essential to keeping our communities and the environment safe. It directly impacts public health, recreation areas, natural spaces, infrastructure, and local businesses.

LA County Public Works is here to serve your community through a variety of sewer maintenance services. These services include:

- **Preventative maintenance** proactively performed on the sewer system with the goal of lessening the likelihood of failure, reducing unexpected downtime, and prolonging the useful life of the system.
- **Accumulative Capital Outlay and Condition Assessment** utilizing our resources and technologies to ensure the sewer system works efficiently now and in the future.
- **24-Hour Emergency Response and Service Request** respond quickly and efficiently during sewer emergencies ranging from pump malfunctions to sewer overflows.



### Individual Actions

*Learn more about homeowner sewer maintenance responsibilities.*

#### What can you do to help maintain the sewer system and prevent sewer-related emergencies?

Many sewer-related emergencies can be prevented with your help! These are actions you can take to help Public Works maintain the system and keep yourself and others safe:

- Locate your house lateral and the sewer line you are connected to by contacting your local public works department or LA County Public Works.
- Maintain your house lateral:
  - Avoid pouring Fats, Oils, & Grease down the drain!
  - Have a contractor clean and cut roots out of your lateral on a regular basis.
  - Provide regular maintenance for your sewer backwater valve.
- Watch for warning signs of sewer backup:
  - Basement back up through the floor drain or other basement fixtures.
  - Debris around the floor drain or in a washtub.
  - Periodic slow-running drains or toilets.
- Contact Public Works immediately at **1-800-675-HELP (4357)** if a sewage overflow occurs.

See an interactive map of sewer activities:

