



**North County Solid Waste Collection Services  
for Acton, Agua Dulce, and the Antelope Valley**

# Presentation Overview

- Challenges with the current trash collection system
- The need for new solid waste collection services in the area
- California Environmental Quality Act (CEQA)
- Benefits provided by a Garbage Disposal District or a Residential Franchise and the services provided
- Proposed service areas
- Next steps

# Overview

*Acton/  
Agua Dulce*



*Antelope  
Valley*



- Public Works is proposing to implement new solid waste collection services to address concerns received from residents in the north County areas of Acton, Agua Dulce, and the Antelope Valley regarding the current trash collection system and illegal dumping.
- The north County currently operates under an open-market system for residential (cart) customers where the County does not regulate the fees charged, services provided, or the quality of service.
- The County's existing non-exclusive commercial franchise system covers the north County where dumpster customers can currently choose any County-approved waste hauler to provide service.

# Why Implement a new Solid Waste Collection Service?



Open Market System Challenges



Combat Illegal Dumping



New Waste Reduction Laws



Additional Services

# Open Market System

- No rate regulations
  - Haulers can increase rates at any time
  - Variations in rates between customers
  - Charges for bulky item collection, excess trash, etc.
- Services
  - May be inconsistent
  - If customer is not satisfied with the service, no recourse or person to complain to
  - No mechanism to ensure compliance with waste reduction, commercial recycling, and green/food waste diversion mandates

# New Waste Reduction Laws

- Assembly Bill 341 (2011)
  - Requires businesses that generate 4 cubic yards or more of solid waste per week and multifamily complexes of 5 or more units to have recycling services in addition to trash collection
- Assembly Bill 1826 (2014)
  - Requires businesses and multifamily complexes with 5 or more units to arrange for green/food waste collection
- Senate Bill 1383 of (2016)
  - Requires ALL generators of green and food waste to subscribe to green/food waste collection OR self-haul in compliance with County ordinances

The County requires waste haulers to meet state law requirements.

# California Environmental Quality Act (CEQA)

- Notice of Preparation is scheduled to be released in February
- Public Review – 30 days (February 2023 – March 2023)
- Draft Environmental Impact Report anticipated to be released for public review in August 2023.

# GDD Services – Occupied Parcels

Every **occupied** property will receive basic service, which includes:

- Trash, recycling and green/food waste collection
- Illegal dumping services along public right-of-way
- Bulky item collection
- Annual cleanup
- Excess green waste and trash collection
- Potential landfill vouchers and/or free disposal days





# GDD Services – Vacant Parcels

Every **vacant** property will receive access to the following services:

- Illegal dumping services along public right-of-way
- Assistance with community cleanup events
- Landfill vouchers

# GDD Collection System

- Geographic defined area where one contracted waste hauler provides weekly waste collection services to both residential and commercial/multi-family properties
  - Residential: 96-gallon wheeled plastic carts
  - Commercial/Multi-family: Metal dumpsters with options for additional dumpsters and/or carts
  - No personal trash cans for weekly collection
- Service level based on County Assessor data for land use type
- Service fees are paid as part of property tax (includes vacant parcels) with additional services paid directly to hauler



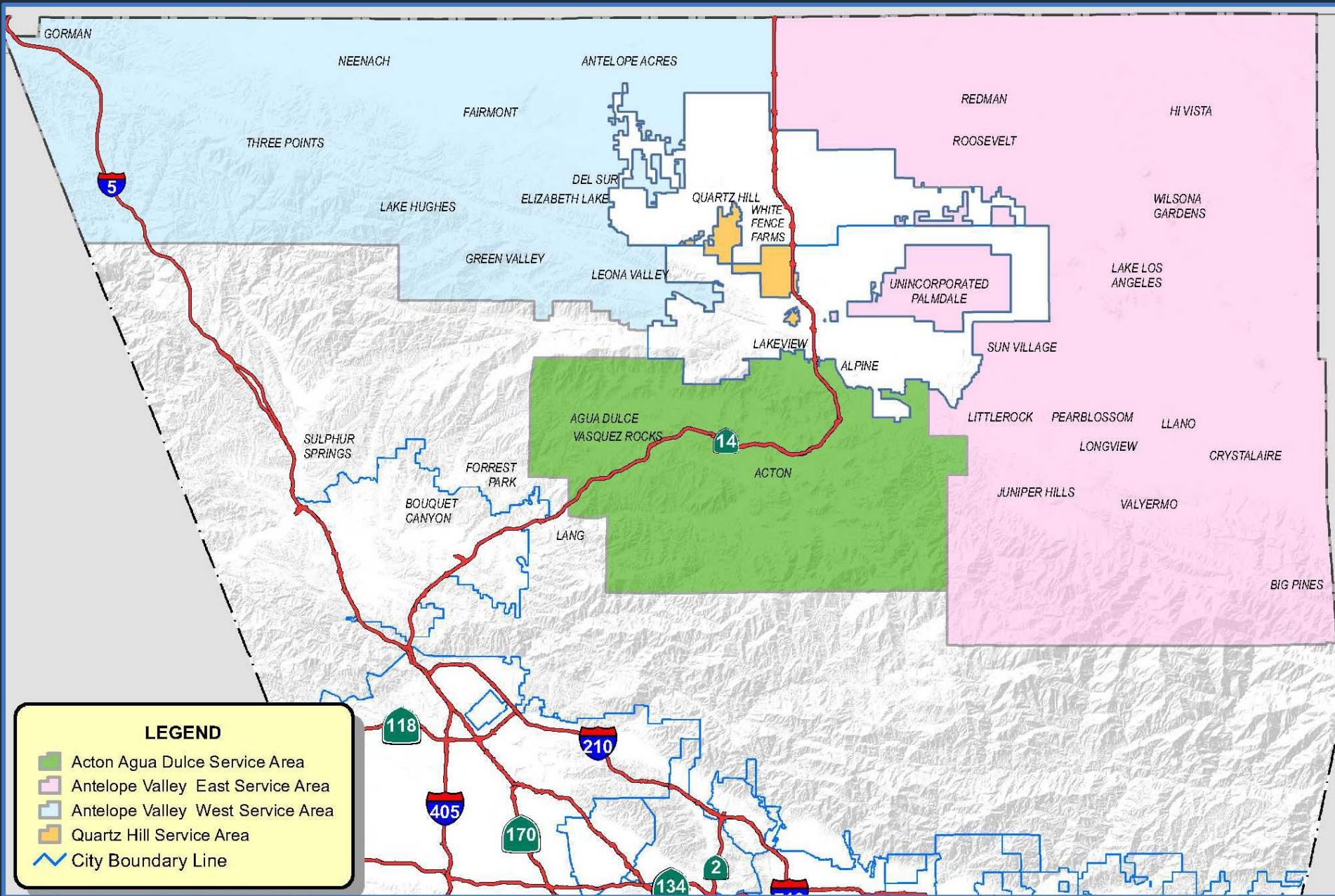
# Residential Franchise – Occupied Parcels

- Residential Franchise is an alternative collection system  
Every **occupied** property will receive basic service, which includes:
  - Trash, recycling and green/food waste collection
  - Illegal dumping services along public right-of-way
  - Bulky item collection
  - Annual cleanup
  - Excess green waste and trash collection
  - Potential landfill vouchers and/or free disposal days
  - Provides service to residential customers who use wheeled plastic carts

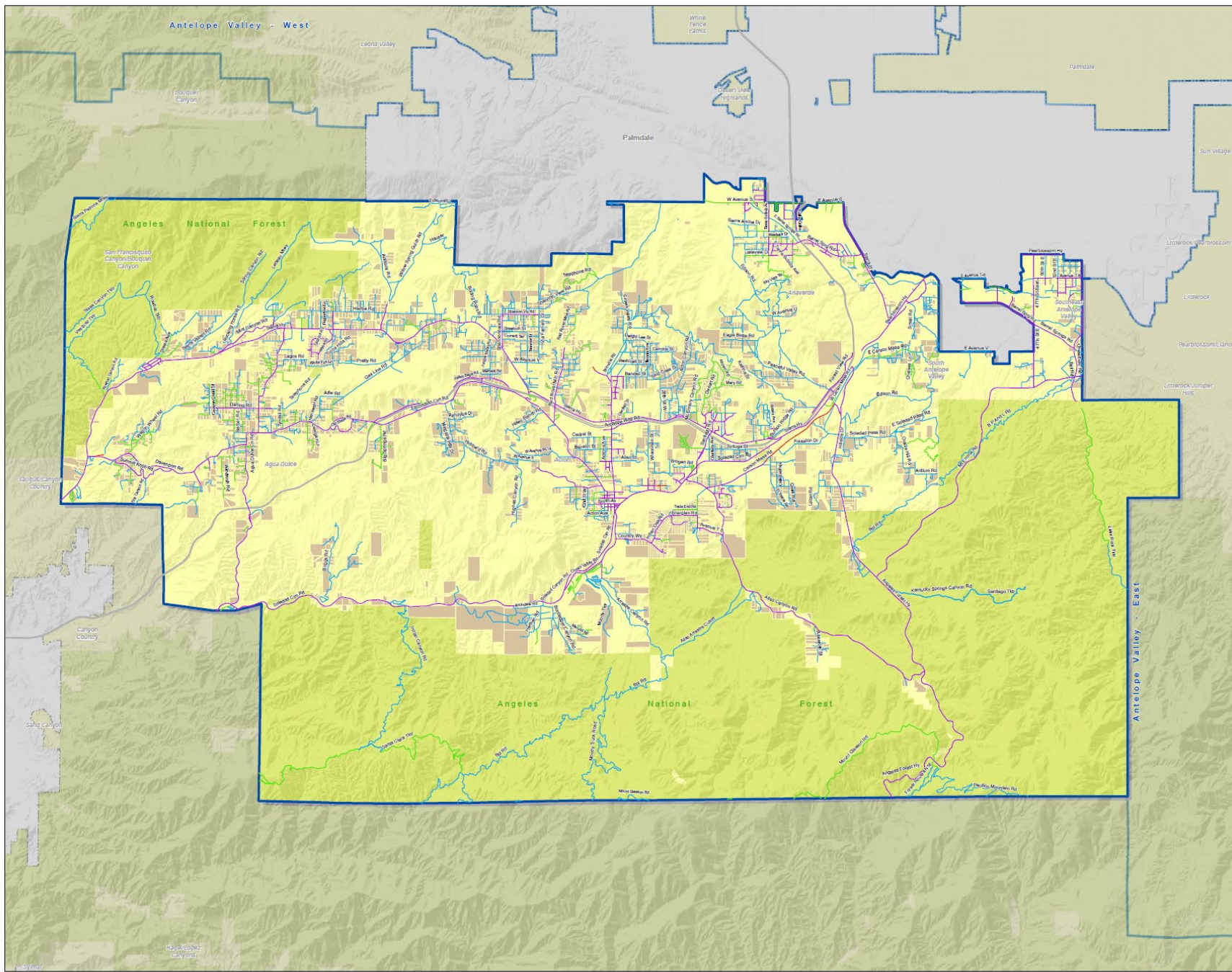


# Residential Franchise – Occupied Parcels

- Service is not mandatory
  - Residents can opt-out and self-haul
  - Requires compliance with Trash Responsibility Ordinance and Mandatory Organic Waste Disposal Reduction Ordinance
- Likely higher service fees compared to GDD
- Dumpster customers would be serviced through the Commercial Franchise
- No funding from vacant parcels to help address illegal dumping
- No service provided to vacant parcels



# Proposed Service Areas



**NORTH COUNTY  
SOLID WASTE COLLECTION SERVICES  
ACTON/AGUA DULCE**

**COUNTY-MAINTAINED ROADS**

- Paved - 153 Miles
- Unpaved - 2 Miles

**NON-COUNTY-MAINTAINED ROADS**

- Paved - Approximately 86 Miles
- Unpaved - Approximately 361 Miles
- Freeways

**PARCELS**

- Developed Residential & Commercial - 4,992

**BOUNDARIES**

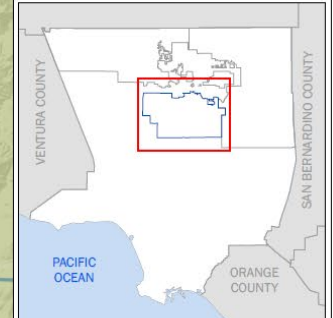
- Acton/Agua Dulce GDD
- County Unincorporated Area
- City Boundary Line

COUNTY MAINTAINED ROADS data source:  
Public Works - Geotechnical & Materials Engineering Division

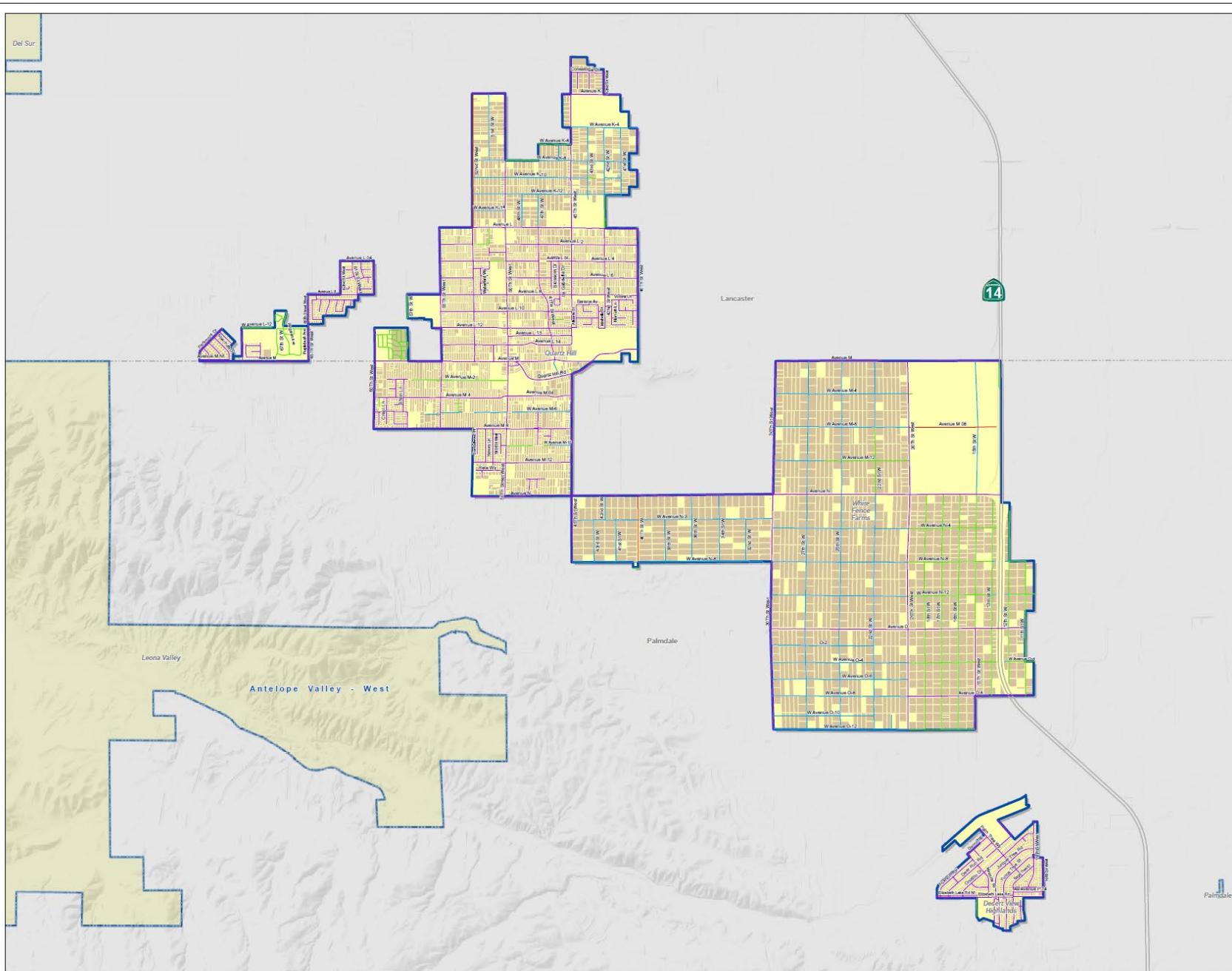
NON-COUNTY MAINTAINED ROADS data source:  
Census TIGER roads as updated by Los Angeles County through visual inspection with 2002 orthoreginal imagery from the Los Angeles Regional Imagery Acquisition Consortium

SPRM Division, Mapping & GIS Services Section (INDAO), 5/4/2023  
Data Sources: Geographic data from GIS Repository. All rights reserved.

Disclaimer: This product is for informational purposes and may not have been prepared for or be suitable for legal, engineering, or surveying purposes. Users of this information should review or consult the primary data and information sources to assess the accuracy of the



# Acton/ Agua Dulce Service Area



**NORTH COUNTY  
SOLID WASTE COLLECTION SERVICES**

**QUARTZ HILL**

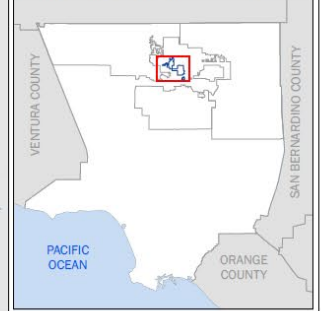
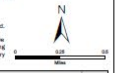
- COUNTY-MAINTAINED ROADS**
- Paved - 69 Miles
  - Unpaved - 2 Miles
- NON-COUNTY-MAINTAINED ROADS**
- Paved - Approximately 22 Miles
  - Unpaved - Approximately 33 Miles
  - Freeways
- BOUNDARIES**
- Quartz Hill
- PARCELS**
- Developed Residential & Commercial - 5,764
  - City Boundary Line
  - County Unincorporated Area

COUNTY MAINTAINED ROADS data source:  
Public Works - Geotechnical & Materials Engineering Division

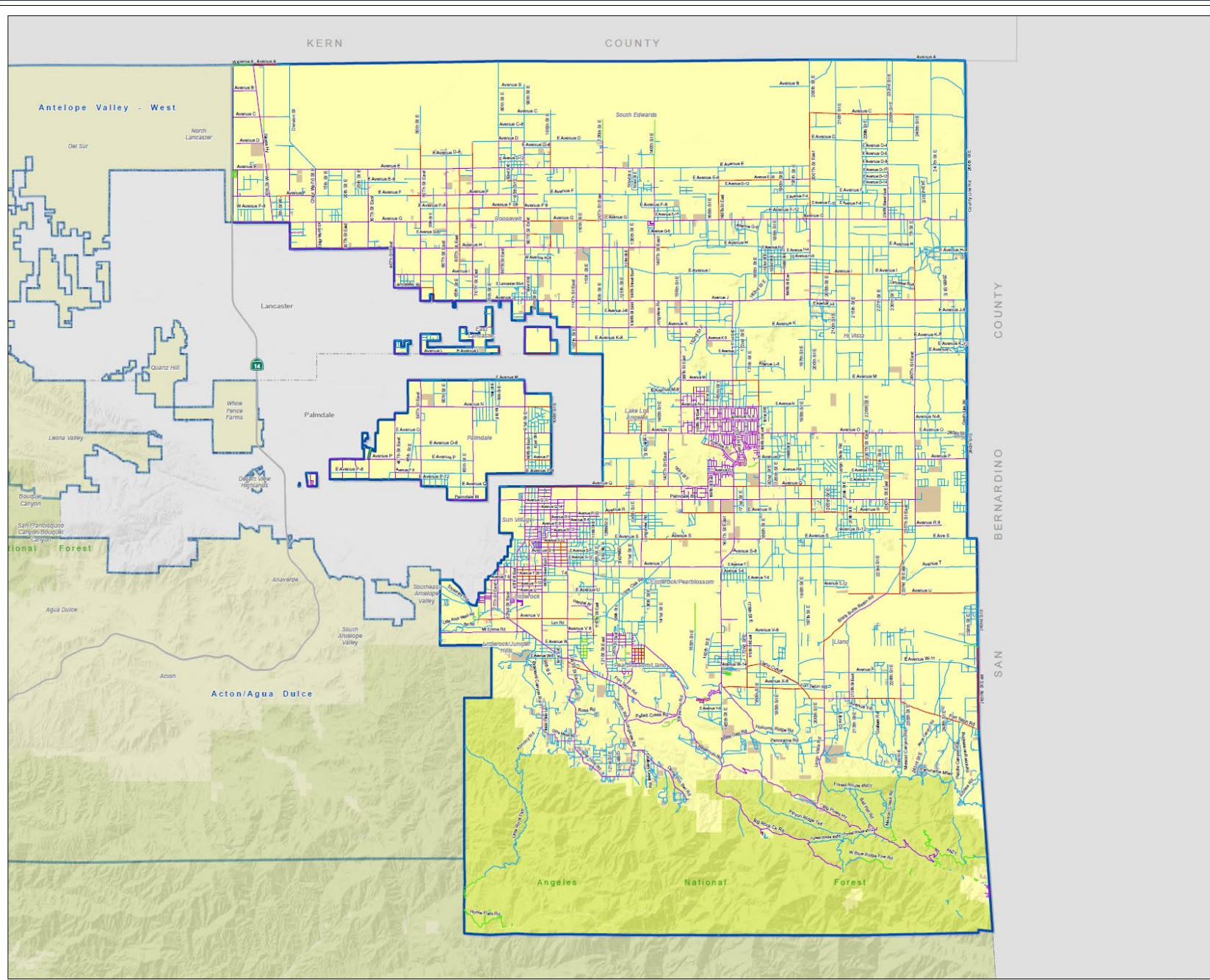
NON-COUNTY MAINTAINED ROADS data source:  
Census TIGER roads as updated by Los Angeles County through visual inspection with 2020 orthorectified imagery from the Los Angeles Regional Imagery Acquisition Consortium



SMRM Division, Mapping & GIS Services Section (IND40), 1/4/2023  
Data Source: Geographic data from aGIS Repository. All rights reserved.

Disclaimer: This product is for informational purposes and may not have been designed for or be suitable for legal engineering, or engineering. No warranty, express or implied, is made by the primary data and information sources to ascertain the quality of the



# Quartz Hill Service Area



### NORTH COUNTY SOLID WASTE COLLECTION SERVICES

#### ANTELOPE VALLEY - EAST

**COUNTY-MAINTAINED ROADS**

- Paved - 555 Miles
- Unpaved - 112 Miles

**NON-COUNTY-MAINTAINED ROADS**

- Paved - Approximately 36 Miles
- Unpaved - Approximately 1,420 Miles
- Freeways

**BOUNDARIES**

- Antelope Valley - East

**PARCELS**


- Developed Residential & Commercial - 10,363
- Unincorporated Area
- City Boundary Line

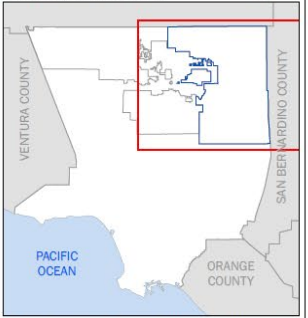
  

COUNTY MAINTAINED ROADS data source:  
Public Works - Geotechnical & Materials Engineering Division

NON-COUNTY MAINTAINED ROADS data source:  
Census TIGER roads as updated by Los Angeles County  
through visual inspection with 2020 orthoreginal imagery from  
the Los Angeles Regional Imagery Acquisition Consortium

SMMW Division, Mapping & GIS Services Section (NGIS), 1/4/2023  
Data Sources: Geographic data from aGIS Repository. All rights reserved.  
Disclaimer: This product is for informational purposes and may not have  
been prepared for or be suitable for engineering or planning  
purposes. Users of this information should review or consult the primary  
data and information sources to ascertain the suitability of use.





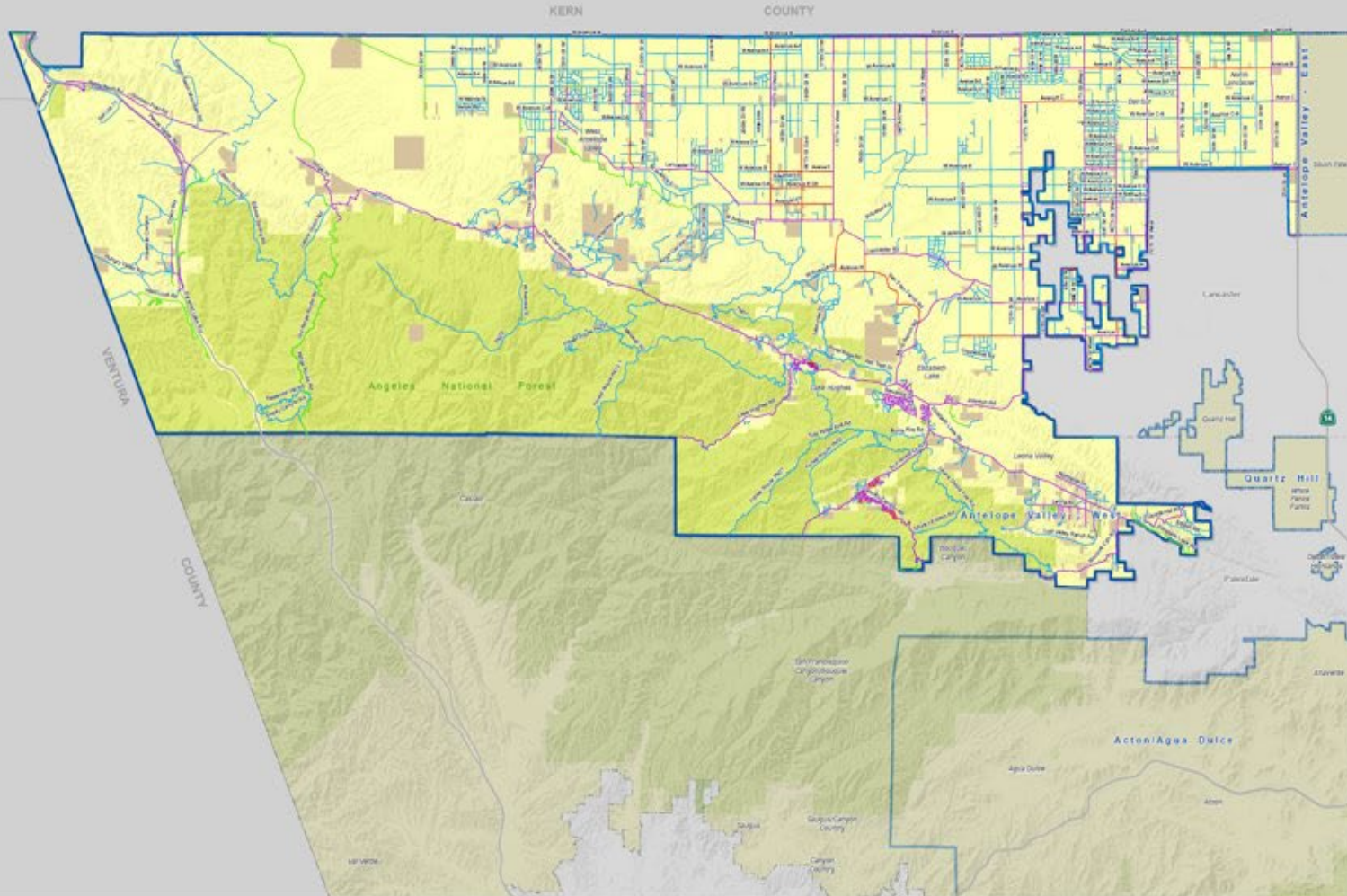
# East Antelope Valley Service Area





**NORTH COUNTY  
SOLID WASTE COLLECTION SERVICES**

**ANTELOPE VALLEY - WEST**



**COUNTY-MAINTAINED ROADS**

- Paved - 214 Miles
- Unpaved - 38 Miles

**NON-COUNTY-MAINTAINED ROADS**

- Paved - Approximately 75 Miles
- Unpaved - Approximately 771 Miles
- Freeways

**PARCELS**

- Developed Residential & Commercial - 3,729

**BOUNDARIES**

- Antelope Valley - West
- Unincorporated Area
- City Boundary Line

COUNTY MAINTAINED ROADS data source:  
Public Works - Geotechnical & Materials Engineering Division

NON-COUNTY MAINTAINED ROADS data source:  
Census TIGER made as updated by Los Angeles County  
through visual inspection with 2002 orthorectified imagery from  
the Los Angeles Regional Imagery Acquisition Consortium

PARCELS data source:  
MapInfo 2000 Service Center (MISC), 1/4/1993

MapInfo 2000 Imagery data from 2002 (MISC), 1/4/1993

MapInfo 2000 Imagery data from 2002 (MISC), 1/4/1993

MapInfo 2000 Imagery data from 2002 (MISC), 1/4/1993

MapInfo 2000 Imagery data from 2002 (MISC), 1/4/1993

MapInfo 2000 Imagery data from 2002 (MISC), 1/4/1993

MapInfo 2000 Imagery data from 2002 (MISC), 1/4/1993

MapInfo 2000 Imagery data from 2002 (MISC), 1/4/1993

MapInfo 2000 Imagery data from 2002 (MISC), 1/4/1993

MapInfo 2000 Imagery data from 2002 (MISC), 1/4/1993

MapInfo 2000 Imagery data from 2002 (MISC), 1/4/1993

MapInfo 2000 Imagery data from 2002 (MISC), 1/4/1993

MapInfo 2000 Imagery data from 2002 (MISC), 1/4/1993

MapInfo 2000 Imagery data from 2002 (MISC), 1/4/1993

MapInfo 2000 Imagery data from 2002 (MISC), 1/4/1993

MapInfo 2000 Imagery data from 2002 (MISC), 1/4/1993

MapInfo 2000 Imagery data from 2002 (MISC), 1/4/1993

MapInfo 2000 Imagery data from 2002 (MISC), 1/4/1993

MapInfo 2000 Imagery data from 2002 (MISC), 1/4/1993

MapInfo 2000 Imagery data from 2002 (MISC), 1/4/1993

MapInfo 2000 Imagery data from 2002 (MISC), 1/4/1993

MapInfo 2000 Imagery data from 2002 (MISC), 1/4/1993

MapInfo 2000 Imagery data from 2002 (MISC), 1/4/1993

MapInfo 2000 Imagery data from 2002 (MISC), 1/4/1993

MapInfo 2000 Imagery data from 2002 (MISC), 1/4/1993

MapInfo 2000 Imagery data from 2002 (MISC), 1/4/1993

MapInfo 2000 Imagery data from 2002 (MISC), 1/4/1993

MapInfo 2000 Imagery data from 2002 (MISC), 1/4/1993

MapInfo 2000 Imagery data from 2002 (MISC), 1/4/1993

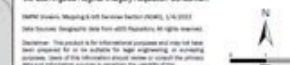
MapInfo 2000 Imagery data from 2002 (MISC), 1/4/1993

MapInfo 2000 Imagery data from 2002 (MISC), 1/4/1993

MapInfo 2000 Imagery data from 2002 (MISC), 1/4/1993

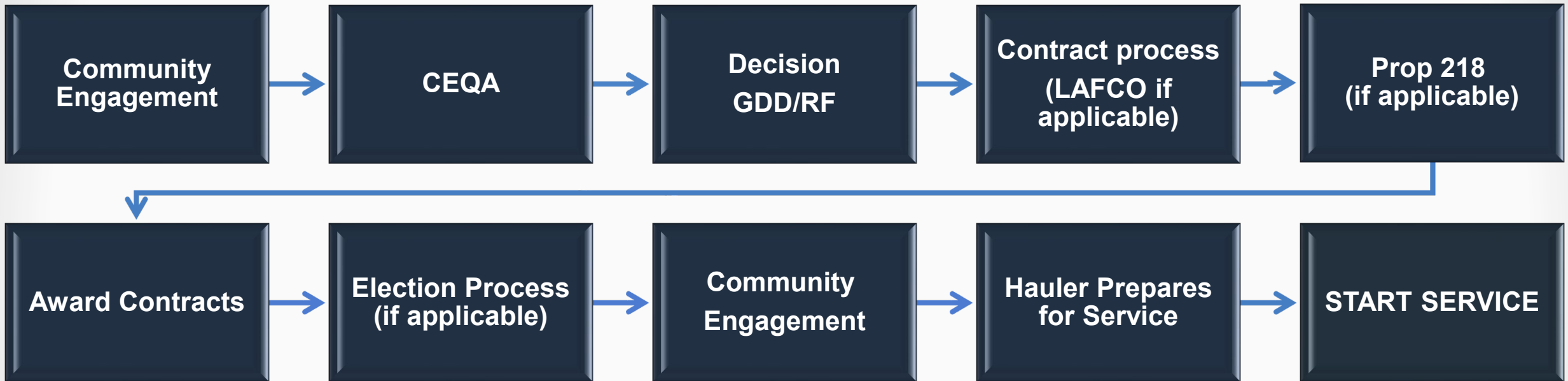
MapInfo 2000 Imagery data from 2002 (MISC), 1/4/1993

# West Antelope Valley Service Area



MapInfo 2000 Imagery data from 2002 (MISC), 1/4/1993

# Next Steps



# Summary

The new North County Solid Waste Collection Services will:

- Ensure all occupied properties have waste collection services
- Improve the quality of life of residents
- Ensures County compliance with State laws
- Provide consistent funding to address illegal dumping

# More Information/Questions

David Coscia: (626) 458-3529 / [dcoscia@pw.lacounty.gov](mailto:dcoscia@pw.lacounty.gov)

Sally McGaughey: (626) 262-2653 / [smcgaughey@pw.lacounty.gov](mailto:smcgaughey@pw.lacounty.gov)

## Additional Resources:

CleanLA.com

Quick Links: North County Solid Waste Collection Services

CleanLA Hotline: (888) CLEAN-LA

Report Illegal Dumping: (888) 8-DUMPING or [dumping@pw.lacounty.gov](mailto:dumping@pw.lacounty.gov)