



*Public Works*  
LOS ANGELES COUNTY



SOLID WASTE COLLECTION

**Sustainable Trash Collection System  
for the North County**

# Presentation Overview

- The need for Garbage Disposal Districts (GDDs) in the area
- Challenges with the current trash collection system
- **California Environmental Quality Act (CEQA)**
- Benefits of a GDD system and services provided
- Proposed service areas
- Next steps

# Overview

*North*



*County*



- Garbage Disposal District (GDD) to address concerns regarding the current trash collection system and illegal dumping
- Open-market system for residential (cart) customers where the County does not regulate the fees charged, services provided, or the quality of service
- The existing non-exclusive commercial franchise system covers the entire County for dumpster customers

# Why Form GDDs Now?



Open Market System Challenges



Combat Illegal Dumping



New Waste Reduction Laws



Additional Services

# Open Market System

- No rate regulations
  - Haulers can increase rates at any time
  - Variations in rates between customers
  - Charges for bulky item collection, excess trash, etc.
- Services
  - May be inconsistent
  - No recourse or person to complain
  - No mechanism to ensure compliance with solid waste mandates

# New Waste Reduction Laws

- Assembly Bill 341 (2011)
  - Requires businesses that generate 4 cubic yards or more of solid waste per week and multifamily complexes of 5 or more units to have recycling services in addition to trash collection
- Assembly Bill 1826 (2014)
  - Requires businesses and multifamily complexes with 5 or more units to arrange for green/food waste collection
- Senate Bill 1383 of (2016)
  - Requires ALL generators of green and food waste to subscribe to green/food waste collection  
**OR self-haul in compliance with County ordinances**

The County requires waste haulers to meet state law requirements.

# California Environmental Quality Act (CEQA)

- Negative Declaration
  - Public Review (Feb 11 – March 12: extended)
  - Comments Received
- Revised Negative Declaration
  - Public Review (June 10 – July 9)

Written comments must be provided by postal or electronic mail to:  
Department of Public Works (Attention Reyna Soriano)  
P.O. Box 1460  
Alhambra, CA 91802-1460  
E-mail: [RSoriano@pw.lacounty.gov](mailto:RSoriano@pw.lacounty.gov)

# GDD Services – Occupied Parcels

Every **occupied** property will receive **access to** basic service, which includes:

- Trash, recycling and green/food waste collection
- Illegal dumping services
- Bulky item collection
- Annual cleanup
- Excess green waste and trash collection
- Potential landfill vouchers and/or free disposal days





# GDD Services – Occupied Parcels (Not on County-Maintained Roads)

Properties not accessible from County-maintained roads must provide the following, in writing:

- Consent for access
- Attestation for dust control, if road is not paved

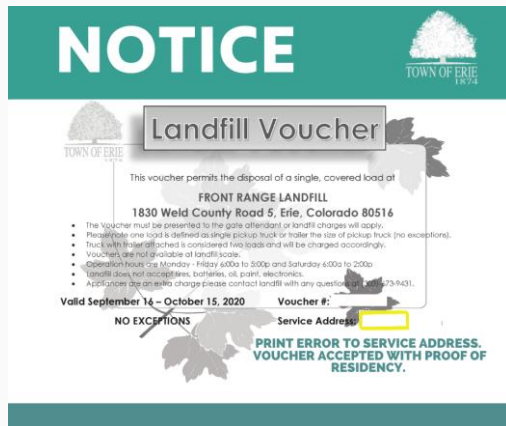
Alternative:

- Customer move containers to County-maintained road for collection
- 3 cubic yard dumpster can be converted to six, 96-gallon wheeled carts
- Availability of **recyclables** and **green waste** collection reduces need for trash

# GDD Services – Vacant Parcels

Every **vacant** property will receive access to the following services:

- Illegal dumping removal
- Assistance with community cleanup events
- Expanded landfill vouchers and roll-off bins



# GDD Collection System

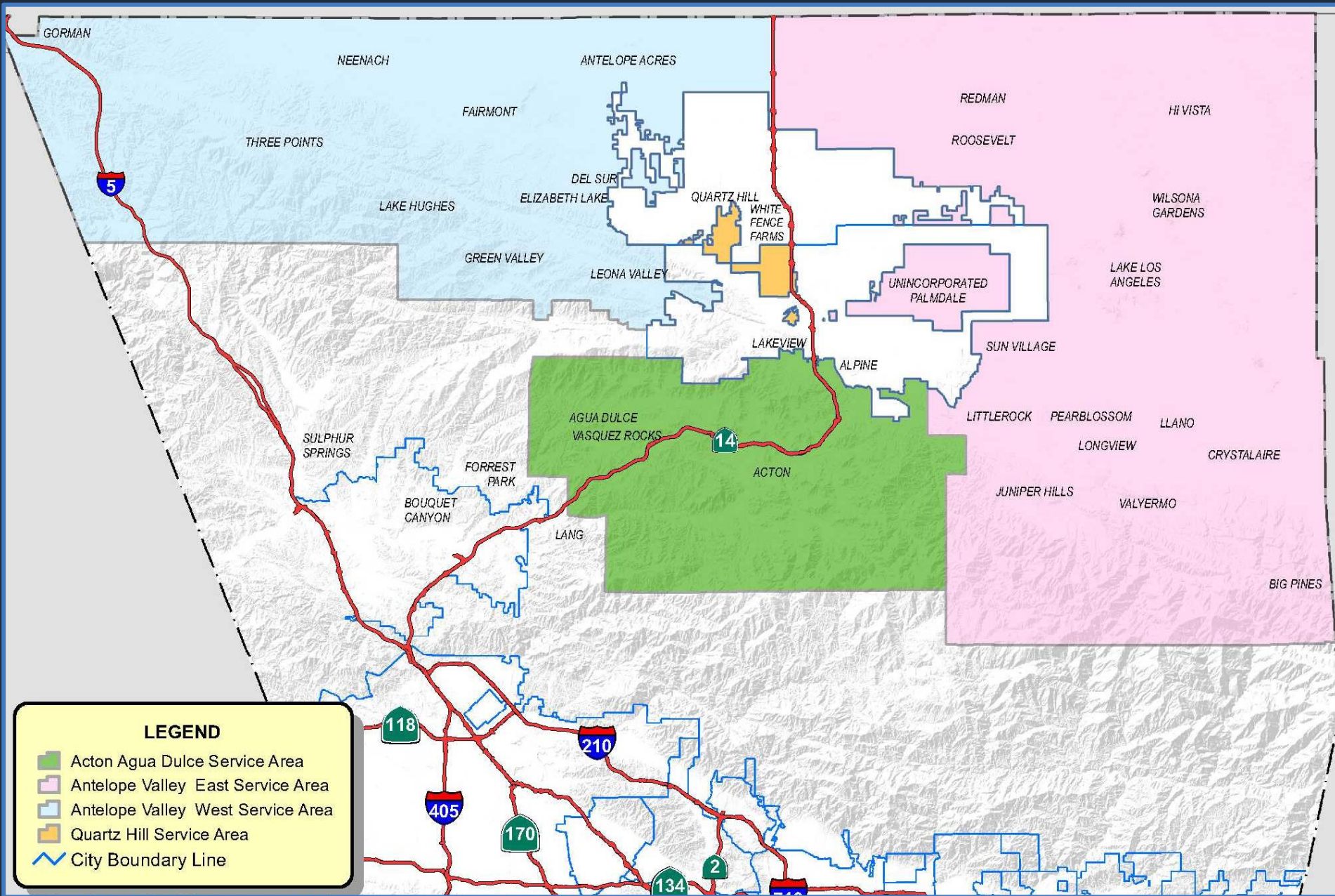
- One contracted waste hauler provides weekly waste collection services to residential and commercial/multi-family properties
  - Residential: 96-gallon wheeled plastic carts
  - Commercial/Multi-family: Metal dumpsters with options for additional dumpsters and/or carts
  - No personal trash cans for weekly collection
- Service level based on County Assessor data for land use type
- Basic service fees are paid as part of property tax
- Additional services paid directly to hauler



# Alternative Collection System

Exclusive Residential Franchise is an alternative collection system

- Only provides service to residential customers who use wheeled plastic carts
- Service is not mandatory (residents are able to opt-out and self haul)
  - Requires compliance with Trash Responsibility Ordinance and Mandatory Organic Waste Disposal Reduction Ordinance
- Likely higher service fees compared to GDD
- No funding from vacant parcels to address illegal dumping
- Contracting process about 12 months
- Equipment purchase about 12-15 months

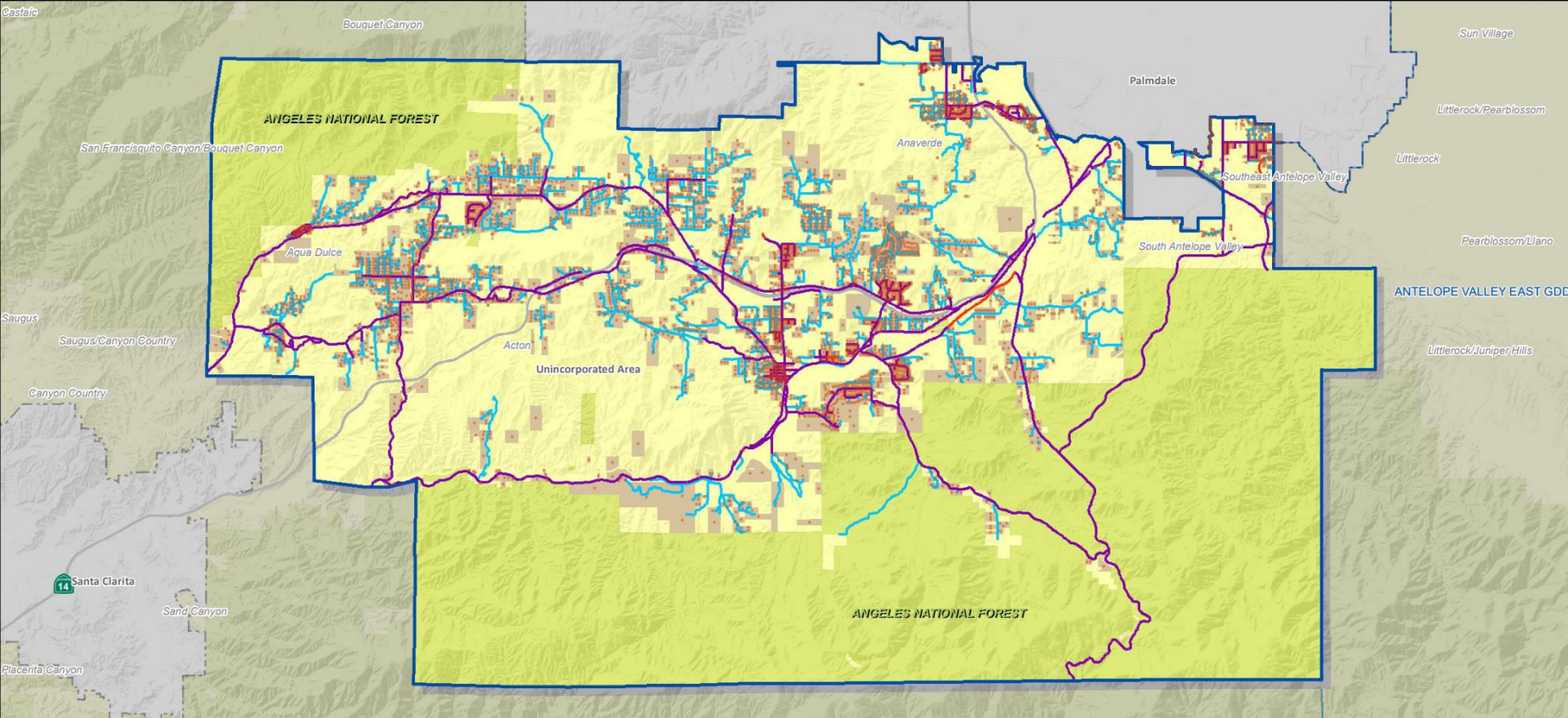


**LEGEND**

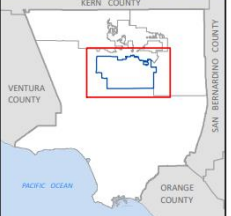
- Acton Agua Dulce Service Area
- Antelope Valley East Service Area
- Antelope Valley West Service Area
- Quartz Hill Service Area
- City Boundary Line

# Proposed Service Areas

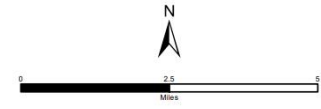
# ANTELOPE VALLEY GDD - COUNTY AND PRIVATE ROADS ACTON/AGUA DULCE



**Acton/  
Agua Dulce  
Service  
Area**

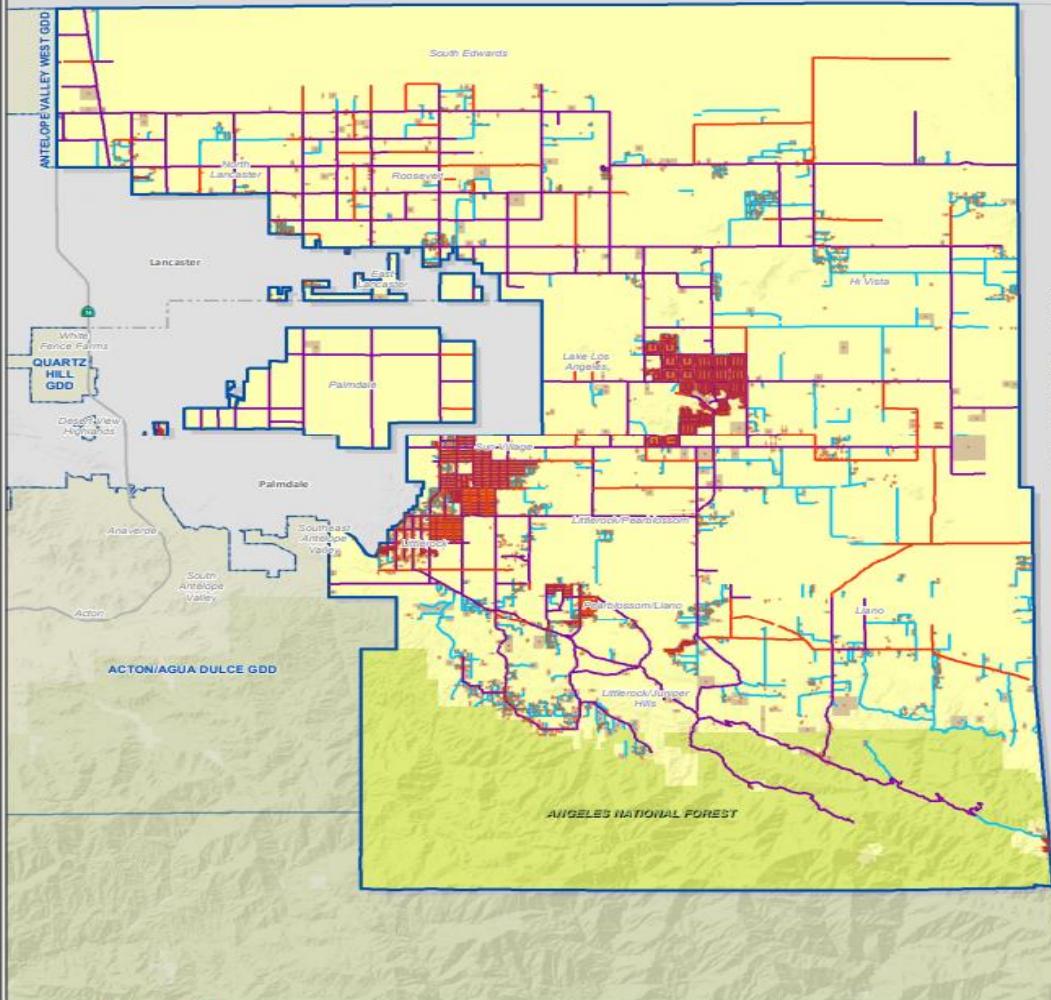


- |                            |   |  |
|----------------------------|---|--|
| <b>BOUNDARIES</b>          | <b>ROAD</b>                                     | <b>PARCELS</b>                             |
| Acton/Agua Dulce GDD       | County Maintained Paved Roads - 150 Miles       | Developed Residential & Commercial - 4,992 |
| County Unincorporated Area | County Maintained Dirt Roads - 3 Miles          |  |
| City Boundary Line         | Non-County Maintained/Private Roads - 219 Miles |  |



Date: 5/17/2022  
 SMPM Division, Mapping & GIS Services Section (NDAD)  
 Data Sources: Geographic data from eGIS Repository. All rights reserved.  
 Disclaimer: This product is for informational purposes only.

KERN COUNTY



**BOUNDARIES**

- Antelope Valley -East
- County Unincorporated Area
- City Boundary Line

**PARCELS**

- Developed Residential & Commercial - 10,363

**ROAD**

- County Maintained Paved Roads - 538 Miles
- County Maintained Dirt Roads - 116 Miles
- Non-County Maintained/Private Roads - 295 Miles

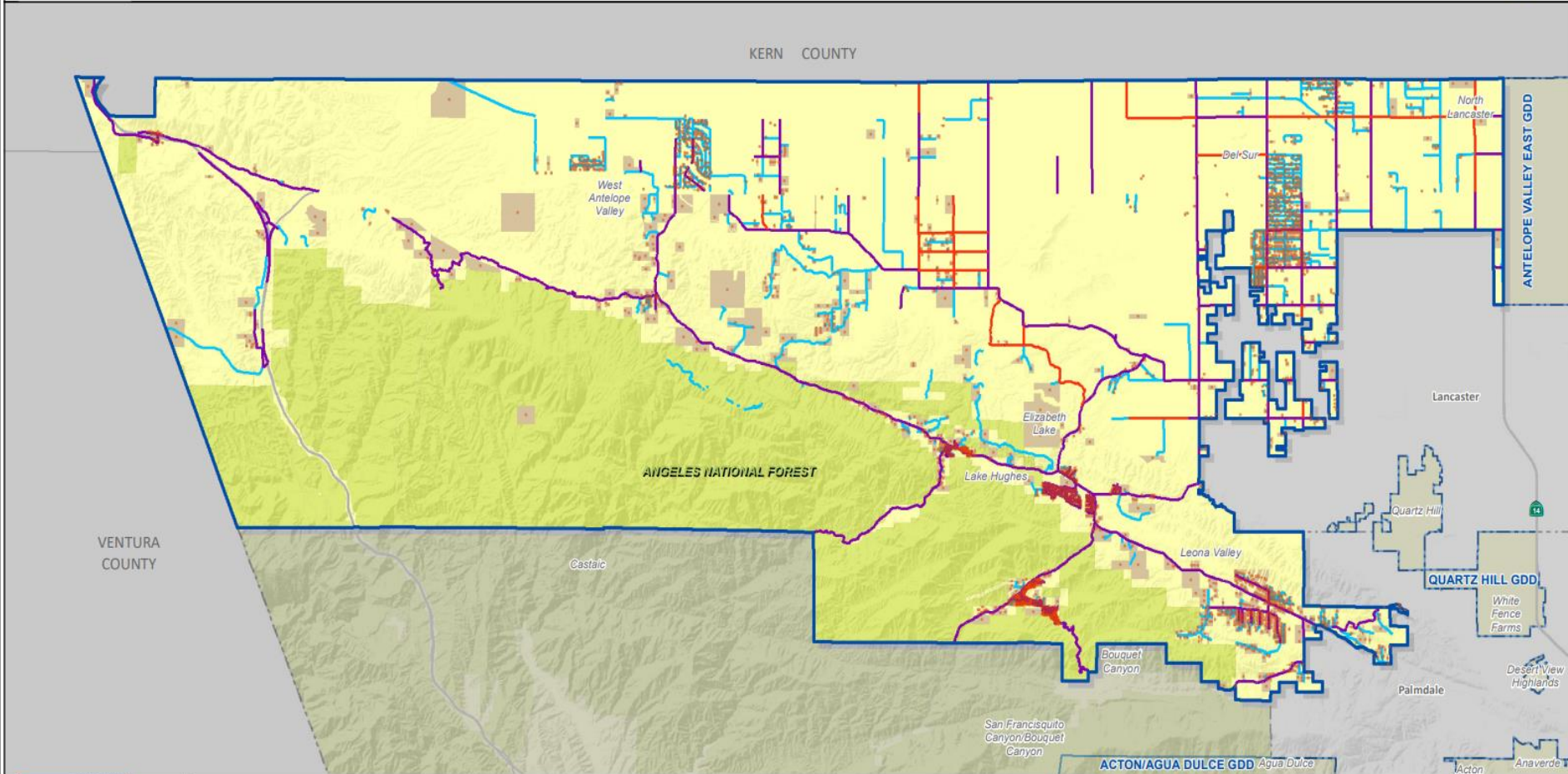


SMPPM Division, Mapping & GIS Services Section (M242)  
Data Sources: Geographic data from eGIS Repository. All rights reserved.  
Disclaimer: This product is for informational purposes only.

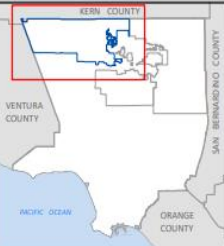
East  
Antelope Valley  
Service  
Area

# ANTELOPE VALLEY GDD - COUNTY AND PRIVATE ROADS

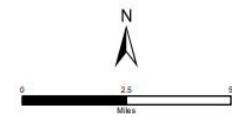
## ANTELOPE VALLEY - WEST



**West  
Antelope  
Valley  
Service  
Area**

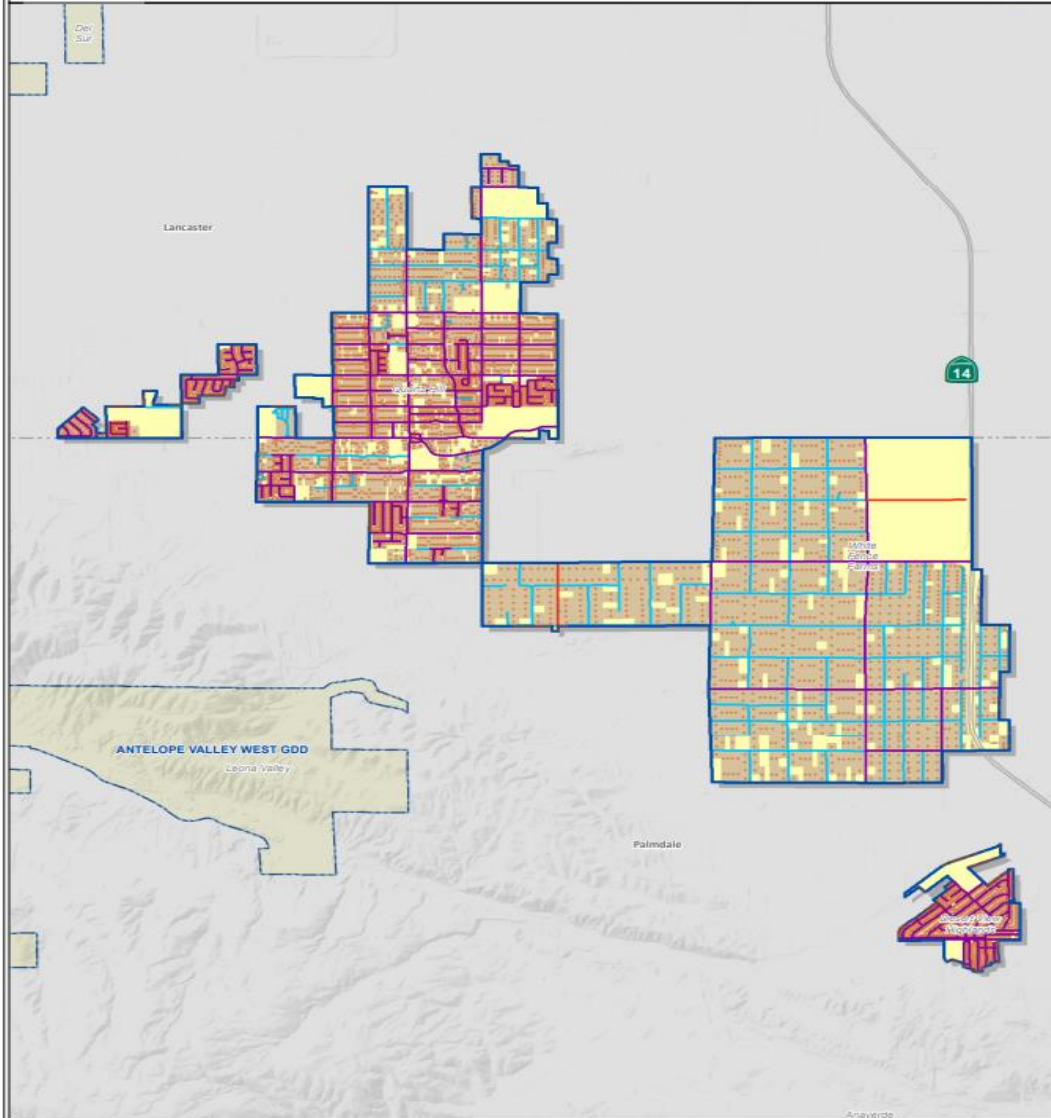


- | BOUNDARIES                 | ROAD  | PARCELS                                    |
|----------------------------|---|--|
| Antelope Valley - West     | County Maintained Paved Roads - 201 Miles       | Developed Residential & Commercial - 3,729 |
| County Unincorporated Area | County Maintained Dirt Roads - 41 Miles         |  |
| City Boundary Line         | Non-County Maintained/Private Roads - 200 Miles |  |



Date: 5/17/2022  
 SMPM Division, Mapping & GIS Services Section (NDMO)  
 Data Sources: Geographic data from eGIS Repository. All rights reserved.  
 Disclaimer: This product is for informational purposes only.

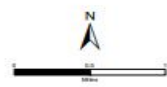




**BOUNDARIES**  
Quartz Hill  
County Unincorporated Area  
City Boundary Line

**PARCELS**  
Developed Residential & Commercial - 5,764

**ROAD**  
County Maintained Paved Roads - 60 Miles  
County Maintained Dirt Roads - 2 Miles  
Non-County Maintained/Private Roads - 47 Miles

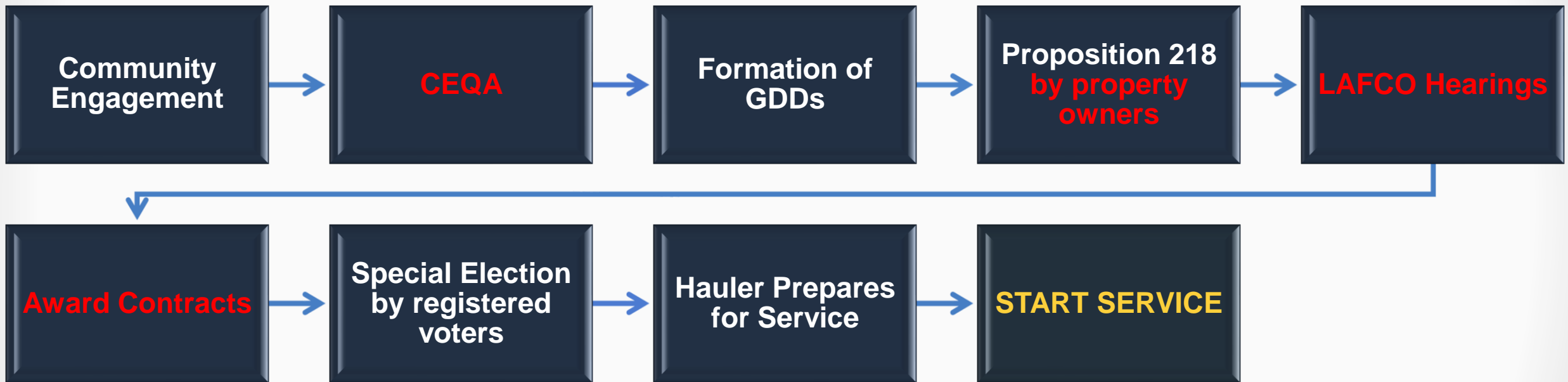


ISMPM Division, Mapping & GIS Services Section (ISMG2)  
Data Sources: Geographic data from eGIS Repository. All rights reserved.  
Disclaimer: This product is for informational purposes only.

06/17/2020 10:00:00 AM C:\Users\jgarcia\OneDrive\Documents\ANTELOPE VALLEY GDD\ROADS\06062020\ANTELOPE\_VALLEY\_GDD\_ROADS\_06062020.mxd

Quartz Hill  
Service  
Area

# Next Steps



# Summary

The proposed Garbage Disposal Districts will:

- Ensure compliance with State laws
- Ensure all property owners have waste collection services
  - Provide written consent and attestation for dust control (if applicable)
- Provide consistent funding to address illegal dumping
- Improve the quality of life of residents

# More Information/Questions

Steve Milewski: (626) 458-3573 / [smilewski@pw.lacounty.gov](mailto:smilewski@pw.lacounty.gov)

David Coscia: (626) 458-3529 / [dcoscia@pw.lacounty.gov](mailto:dcoscia@pw.lacounty.gov)

## Additional Resources:

CleanLA.com/NewGDDs

CleanLA.com

CleanLA Hotline: (888) CLEAN-LA

Report Illegal Dumping: (888) 8-DUMPING or [dumping@pw.lacounty.gov](mailto:dumping@pw.lacounty.gov)