

Los Angeles County Conversion Technology Project – Phase IV

Informational Workshop
September 23, 2010



Introductions

- Jim Binder – Alternative Resources, Inc.
- Sue Higgins – Alternative Resources, Inc.
- Traacey Anthony – Alternative Resources, Inc.
- Chip Clements – Clements Environmental Corp.



Los Angeles County Conversion Technology Project: Phase IV

Objective

Work collaboratively with partner cities and facility operators to develop commercial, conversion technology projects within Los Angeles County



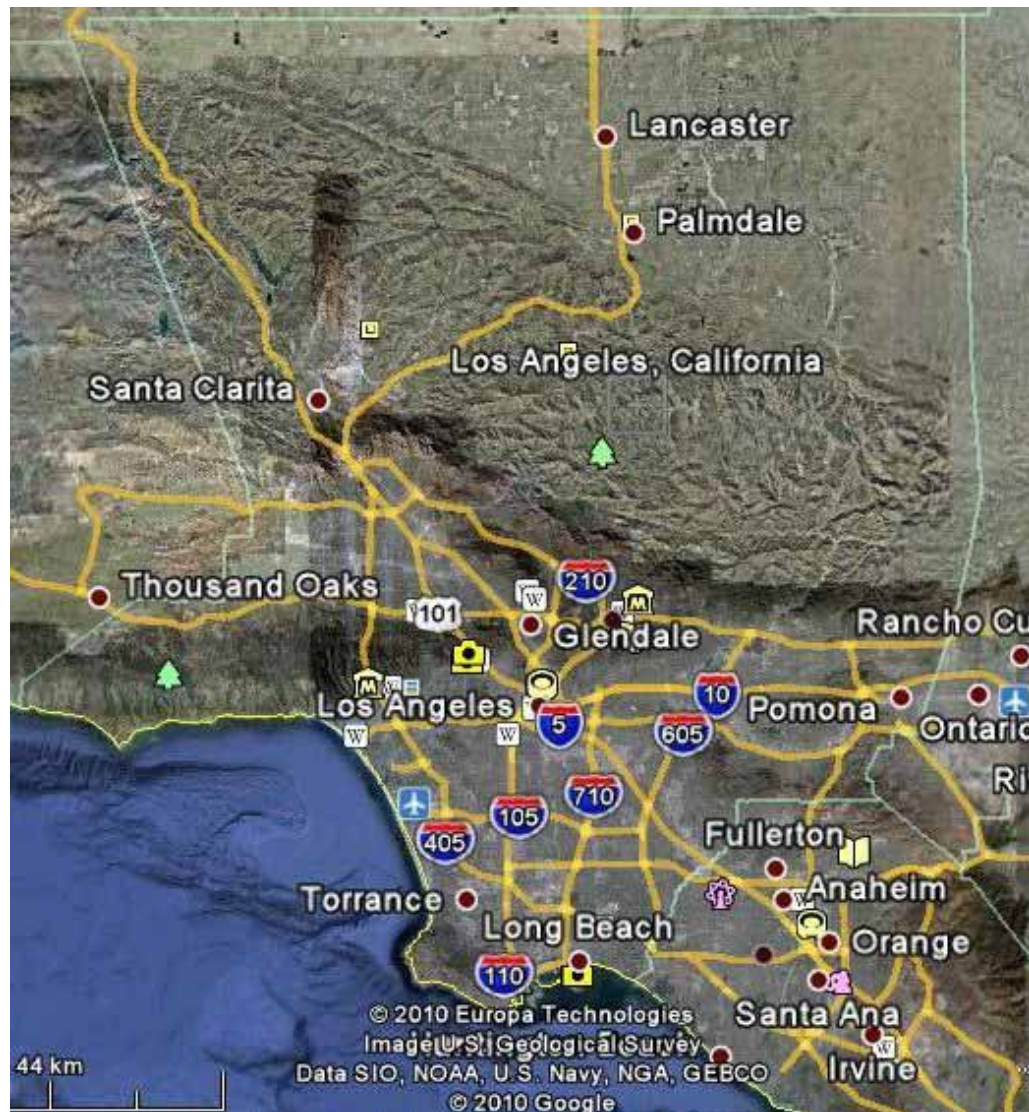
Project Benefits to Cities and Facility Operators

- Long-term, reliable, cost-competitive solid waste management solution
- Increased recycling combined with generation of energy and other products
- Diversion from landfill disposal, extension of landfill life
- Potential for host community revenues
- County support and assistance

County Support Services

- Needs Assessment
- Site Identification and Evaluation
- Technology Evaluation
- Feasibility Assessment
- Project Delivery, Procurement Services
- Permitting, Regulatory Support
- Identification of Funding Sources
- Energy Sales and Product Marketing
- Design, Construction Support (including LEED)

Site Identification and Evaluation



Site Identification and Evaluation

- Site Identification
 - *Direct expression of interest (cities/facilities)*
 - *Letters to cities, landfills, MRFs, others*
 - *Team contacts and correspondence*
 - *Website*
 - *Workshop*

Site Identification and Evaluation

- Meetings with Cities and others Expressing Interest
 - *Cities: Avalon, Calabasas, Carson, Gardena, Glendale, Industry, Lancaster, Long Beach, Los Angeles, Pico Rivera, Santa Clarita, Vernon*
 - *Others: BLT Enterprises, Mustang Power, Calmet Services, WRR*



Site Criteria

- Size
- Zoning
- Adjacent Land Use
- Environmental Factors
 - *Floodplains*
 - *Endangered species*
 - *Wetlands*
 - *Coastal zone*
- Protected Land
- Environmental Justice
- Access
- Utility Availability
- Interconnect



Kern County

Ventura County

Los Angeles County

San Bernardino County

Islands not in actual location

0 4 5 Miles

0 2 4 5 Miles

Unincorporated Areas
City of Los Angeles

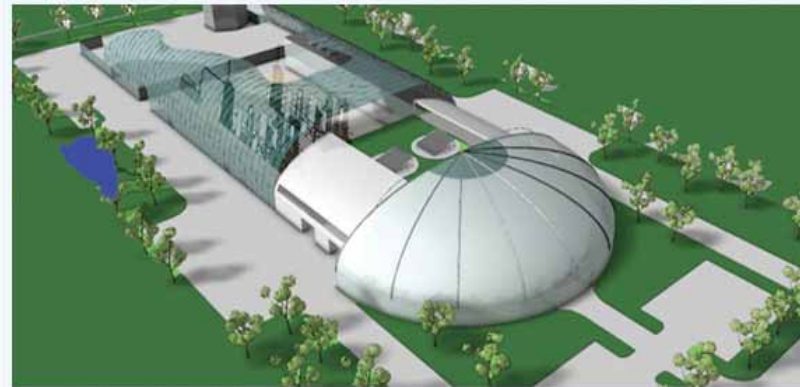
Pacific Ocean

Orange County

Copyright 2007 Los Angeles Almanac/Given Place Publishing
All Rights Reserved

Other Key Support Services

- Needs Assessment for Partners
- Project Delivery, Procurement Services
- Identification of Funding Sources



Needs Assessment for Partners

- General Goals and Objectives
- Current Waste Practices and Future Needs
- Community only or Regional Project
- Partner Assets Applicable to Project
- Environmental and Business Needs

Needs Assessment for Partners (continued)

- Project Definition, Feasibility Assessment and Implementation Plan
- Project Delivery Options for Ownership, Financing, Design, Construction, Operations (Private Model, Public Model)
- Procurement Options for Public/Private Partnerships (e.g., RFQ/RFP, RFQP)
- Options for County Partnership, Support

Project Delivery Options: Public Model and Private Model

- Ownership
- Financing
- Design, Construction, Operation Responsibility
- Advantages, Disadvantages of Options, Risk Allocation
- Preferred Model(s)

Procurement Options for Public/Private Partnerships

- RFI/Shortlist/Negotiation
- RFQ/RFP/Negotiation
- Combined RFQP/Negotiation
- Hybrid Options
- Most Common Practices

Examples of Project Funding Sources

- Federal Funding Opportunities
- State Funding Opportunities

Contact Information

Alternative Resources, Inc.

(978) 371-2054

jbinder@alt-res.com

shiggins@alt-res.com

tanthony@alt-res.com

Clements Environmental

(818) 267-5100

cclements@clementsenvironmental.com

