

**COUNTY OF LOS ANGELES
DEPARTMENT OF PUBLIC WORKS**

**DRAFT NEGATIVE DECLARATION
FOR**

**FRANCHISE AGREEMENTS FOR RESIDENTIAL SOLID WASTE COLLECTION
SERVICES IN UNINCORPORATED COMMUNITIES IN THE COUNTY OF LOS ANGELES**

I. Location and Brief Description

The project consists of franchise agreements between the County of Los Angeles and selected waste collectors to provide refuse, green waste, and recyclables collection services to residential (single family and 2-unit) and multi-family property owners in the following unincorporated areas of the County of Los Angeles:

- Altadena/Kinneloa Mesa,
- East Charter Oak/East Ramona/Foothill/Spadra,
- East Pasadena/East San Gabriel/East Arcadia/Royal Oaks,
- Hacienda Heights,
- Agua Dulce/Acton,
- Desert,
- Gorman/Neenach/Del Sur/Green Valley/Leona Valley/Quartz Hill,
- Littlerock/Sun Village/Pearblossom/Wilsons/Llano,
- Castaic/Newhall/Stevenson Ranch/Valencia/Canyon Country/Saugus,
- Chatsworth/Sunland/North Agoura/West Hills,
- Antelope,
- Lamanda,
- Ocean View/La Rambla/ West Carson,
- Pioneer/Bonner,
- Dominguez/West Compton/Athens Village/East Compton,
- El Camino Village/Del Aire/Alondra Park,
- Marina Del Rey/Ladera Heights,
- Franklin/Doheny/Universal/Veterans Admin Center/Gilmore,
- North East Bay and Mountain,
- North West Bay and Mountain

Solid waste collection services in the unincorporated areas of the County of Los Angeles are currently provided either through an open-market system in which property owners arrange directly for services with the waste haulers of their choice, garbage disposal districts, or the franchise solid waste collection system. The County of Los Angeles is proposing to change existing residential solid waste collection services for certain County unincorporated areas from an open-market system to a franchise system. Franchisees would be required to provide automated collection services and to offer green waste and recyclables collection.

On September 28, 2004, the County Board of Supervisors adopted Ordinance No. 2004-0055. This ordinance authorizes the award of nonexclusive, partially exclusive, or wholly exclusive franchise agreements for solid waste collection services in all or part of the unincorporated territory of the County, in accordance with California Public Resources Section 40059, for the purpose of assisting the

County in achieving compliance with the State's waste diversion requirements and improving the quality and efficiency of solid waste collection services in the unincorporated territory.

On October 3, 2006, the County Board of Supervisors adopted a Negative Declaration for exclusive Franchise Agreements for residential solid waste collection services in eight County unincorporated areas.

The County Department of Public Works will issue requests for proposals for exclusive, semi-exclusive or non-exclusive franchise agreements to provide residential solid waste collection services in the unincorporated areas listed in Section I of this document. Each of these areas is currently served by one, two or three residential waste collectors providing manual or automatic collection services. All residential waste collectors are required to provide green waste and recyclables collection services. Green waste and recyclables collection services are permitted to be provided either by separate collection, necessitating the use of three vehicles per route, or by commingled collection that is taken to a materials recovery facility (MRF) for separation.

An exclusive, semi-exclusive or non-exclusive franchise is proposed to be awarded for each of the areas. Each waste hauler to be awarded a franchise would be required to enter into a franchise agreement with the County and comply with the County's requirements. The franchise agreements incorporate a standard scope of services with modifications as needed to reflect each community's unique characteristics and needs as well as reporting and customer service requirements and provisions to enhance the County's enforcement of waste collection requirements. Residential property owners in the franchise areas would arrange directly with the franchisee for waste collection services unless they choose to self-haul. Multi-family property owners in the franchise areas may arrange directly with the franchisee for waste collection services.

The project is anticipated to increase diversion of green waste and recyclable materials, reduce pollution from collection vehicle exhaust, reduce employee injuries, increase customer services and customer service accountability, improve Assembly Bill 939 program implementation performance and reporting accuracy, and facilitate more efficient enforcement of waste collection laws. The project specifics are detailed in the requests for proposals described above and the draft franchise agreement attached to the requests for proposals.

Waste collectors operating pursuant to a franchise agreement would perform franchise services in accordance with the laws governing the safe collection, transport, recycling and disposal of residential solid waste.

II. Mitigation Measures Included in the Project to Avoid Potentially Significant Effects

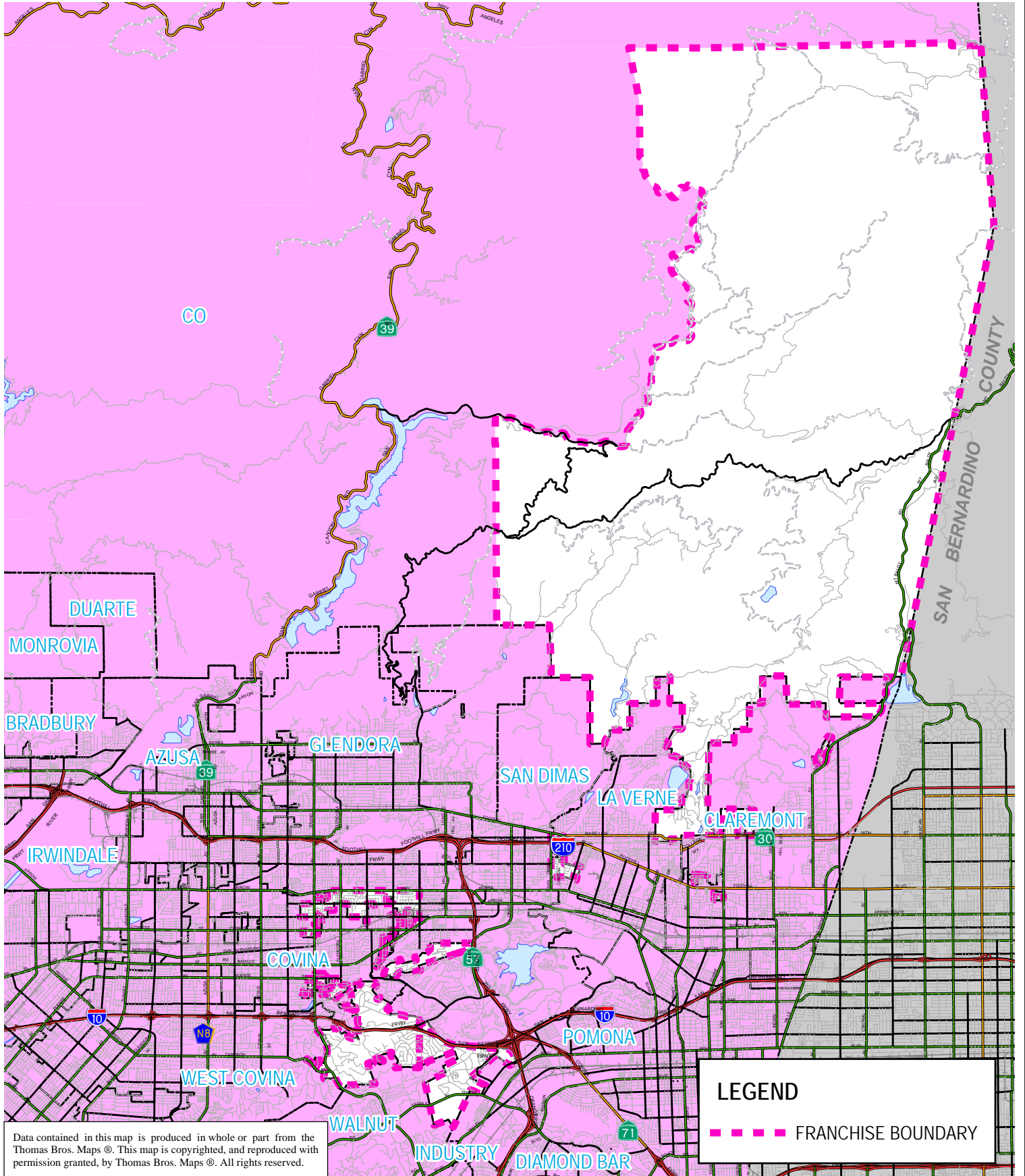
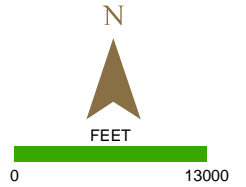
No significant effects are identified.

III. Finding of No Significant Effect

Based on the attached Initial Study and Attachment A - Discussion of Environmental Factors, it has been determined that the project will not have a significant effect on the environment.



EAST CHARTER OAK / RAMONA / FOOTHILL / SPADRA



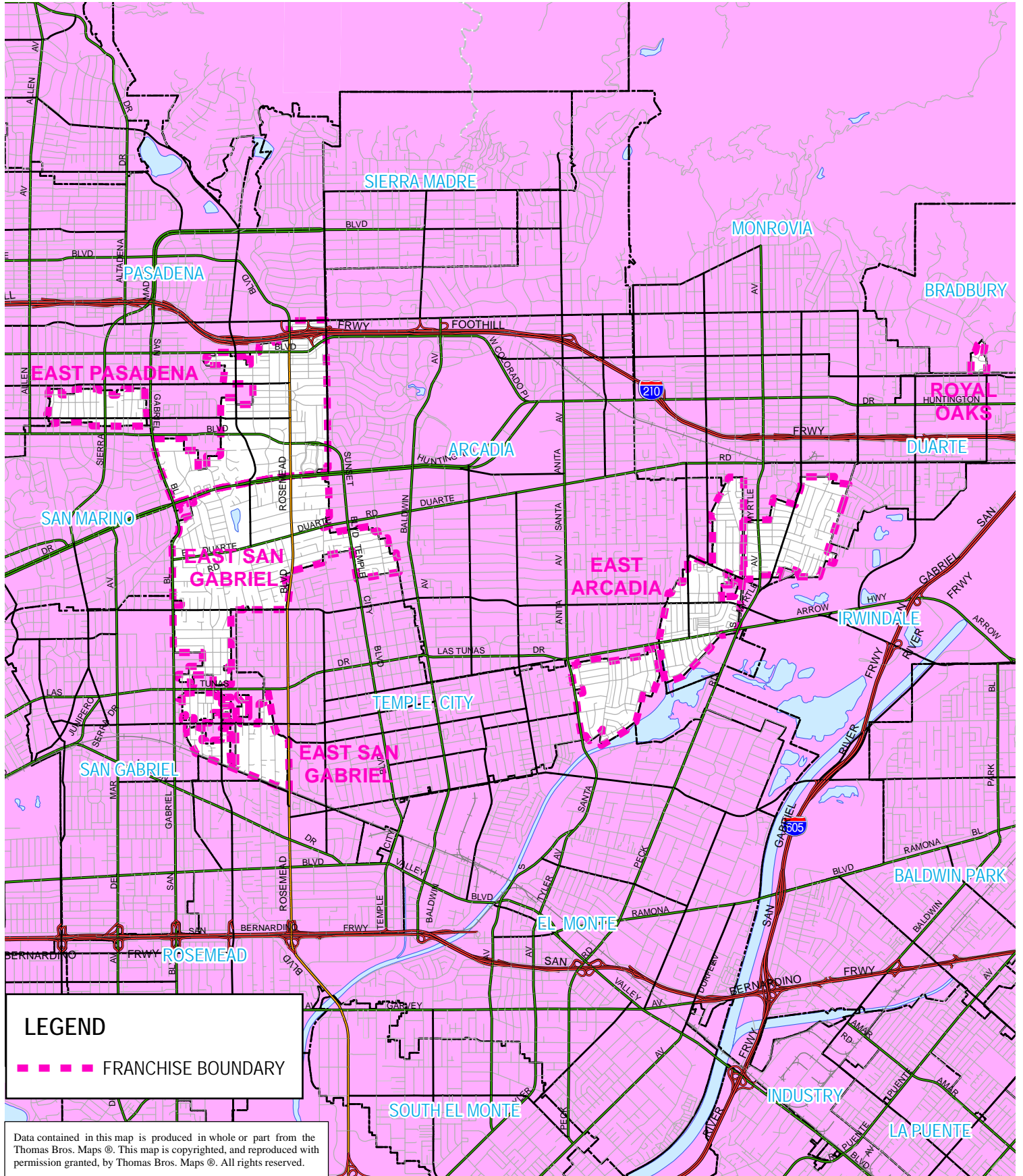
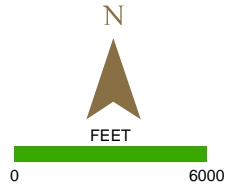
Data contained in this map is produced in whole or part from the Thomas Bros. Maps ©. This map is copyrighted, and reproduced with permission granted, by Thomas Bros. Maps ©. All rights reserved.

LEGEND

- FRANCHISE BOUNDARY



EAST PASADENA / EAST SAN GABRIEL EAST ARCADIA / ROYAL OAKS



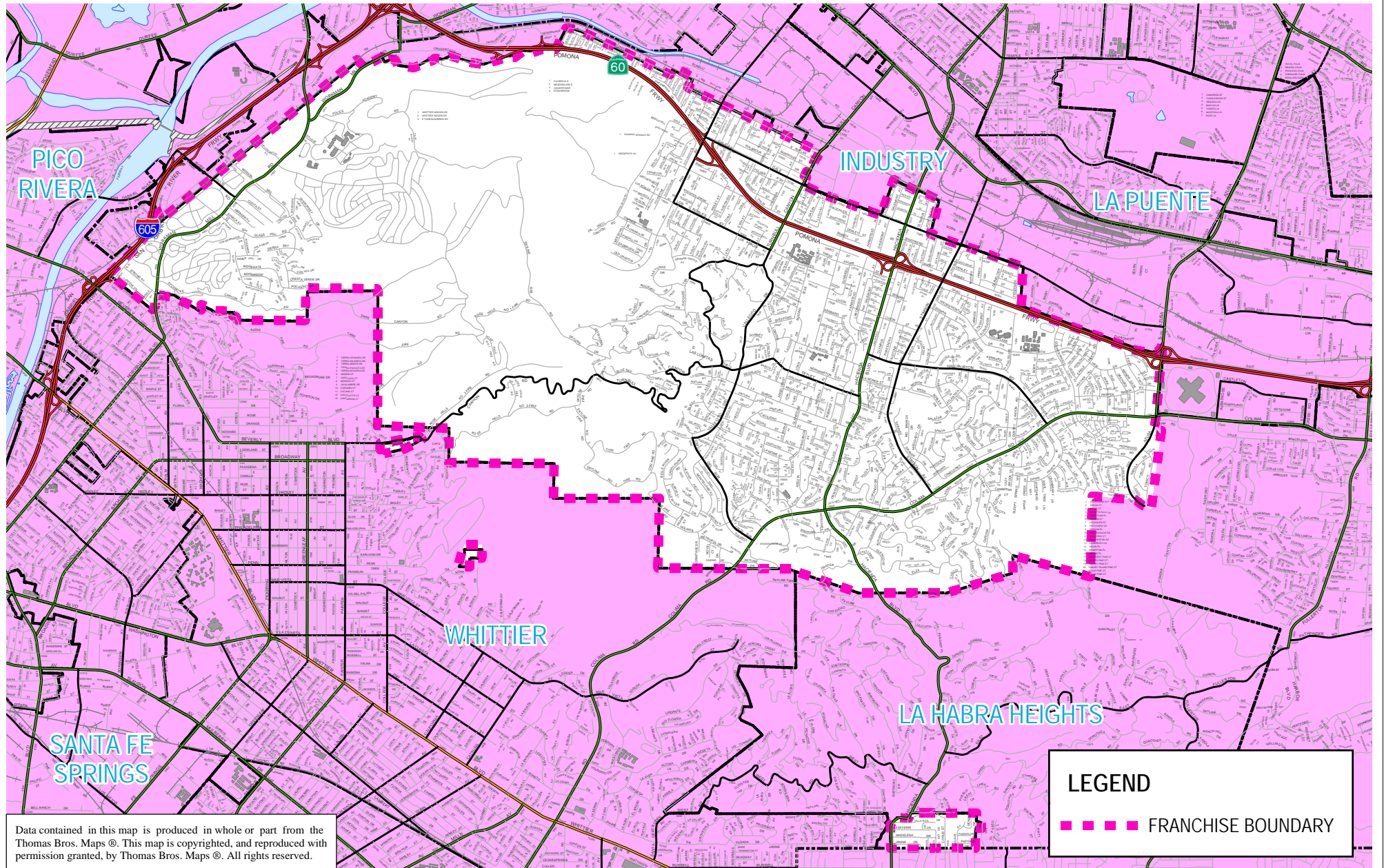
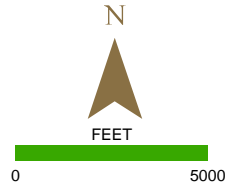
LEGEND

— — — — — FRANCHISE BOUNDARY

Data contained in this map is produced in whole or part from the Thomas Bros. Maps ©. This map is copyrighted, and reproduced with permission granted, by Thomas Bros. Maps ©. All rights reserved.



HACIENDA HEIGHTS



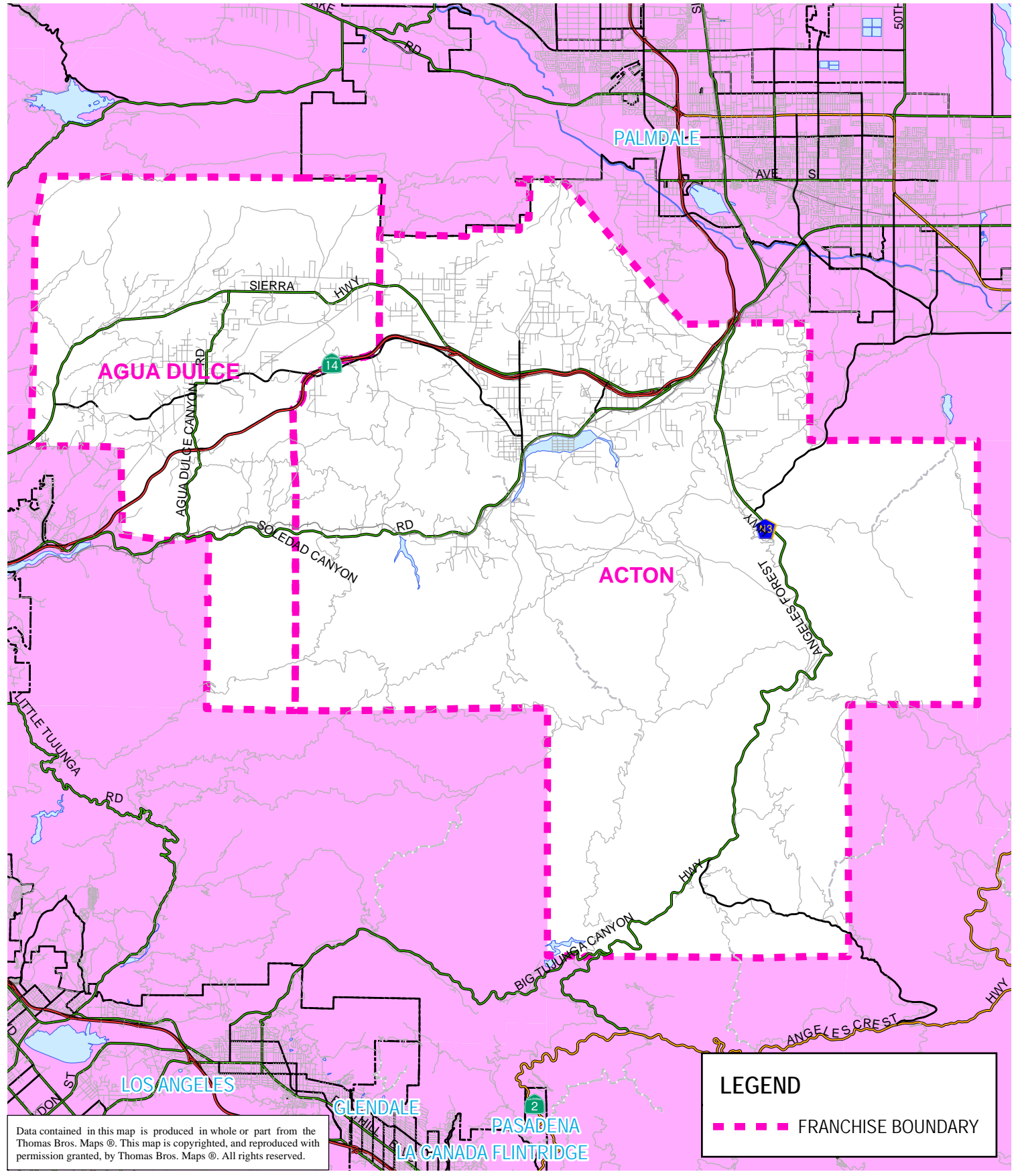
Data contained in this map is produced in whole or part from the Thomas Bros. Maps ©. This map is copyrighted, and reproduced with permission granted, by Thomas Bros. Maps ©. All rights reserved.

LEGEND

■ ■ ■ ■ ■ FRANCHISE BOUNDARY



AGUA DULCE / ACTON



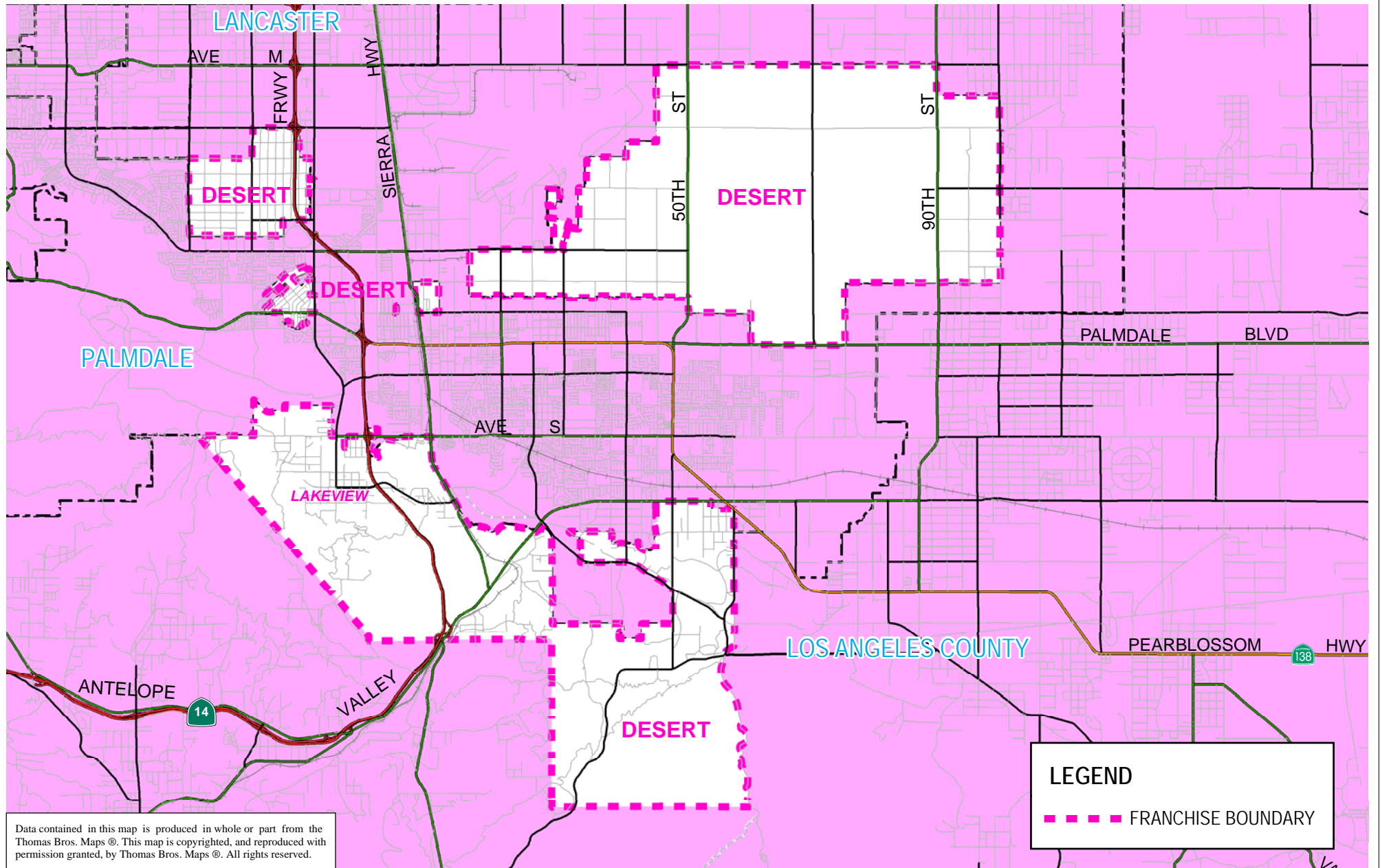
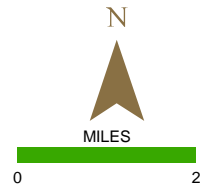
Data contained in this map is produced in whole or part from the Thomas Bros. Maps ©. This map is copyrighted, and reproduced with permission granted, by Thomas Bros. Maps ©. All rights reserved.

LEGEND

- FRANCHISE BOUNDARY



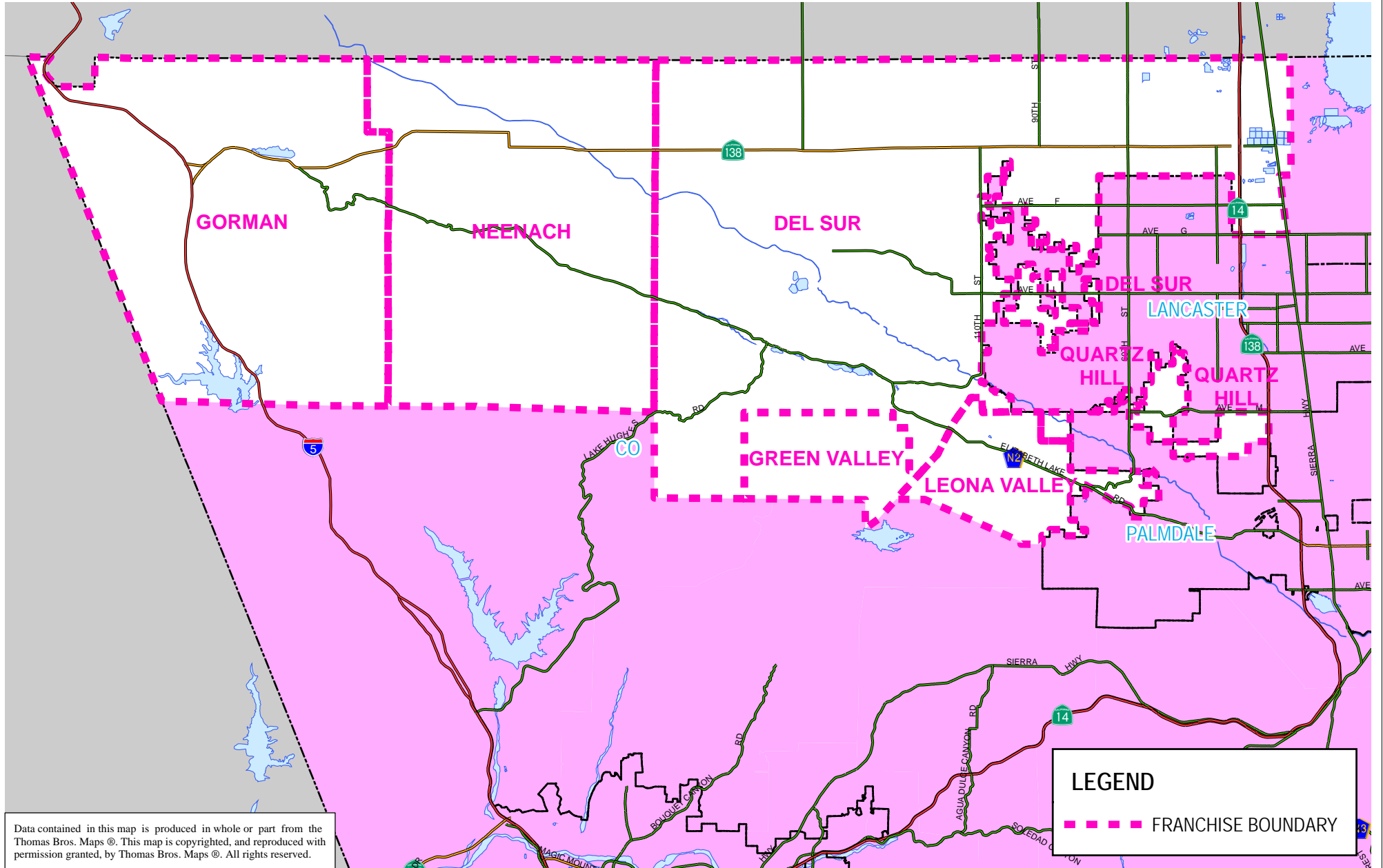
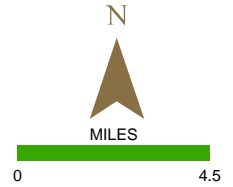
DESERT FRANCHISE AREA INCLUDES THE COMMUNITY OF LAKEVIEW



Data contained in this map is produced in whole or part from the Thomas Bros. Maps ©. This map is copyrighted, and reproduced with permission granted, by Thomas Bros. Maps ©. All rights reserved.



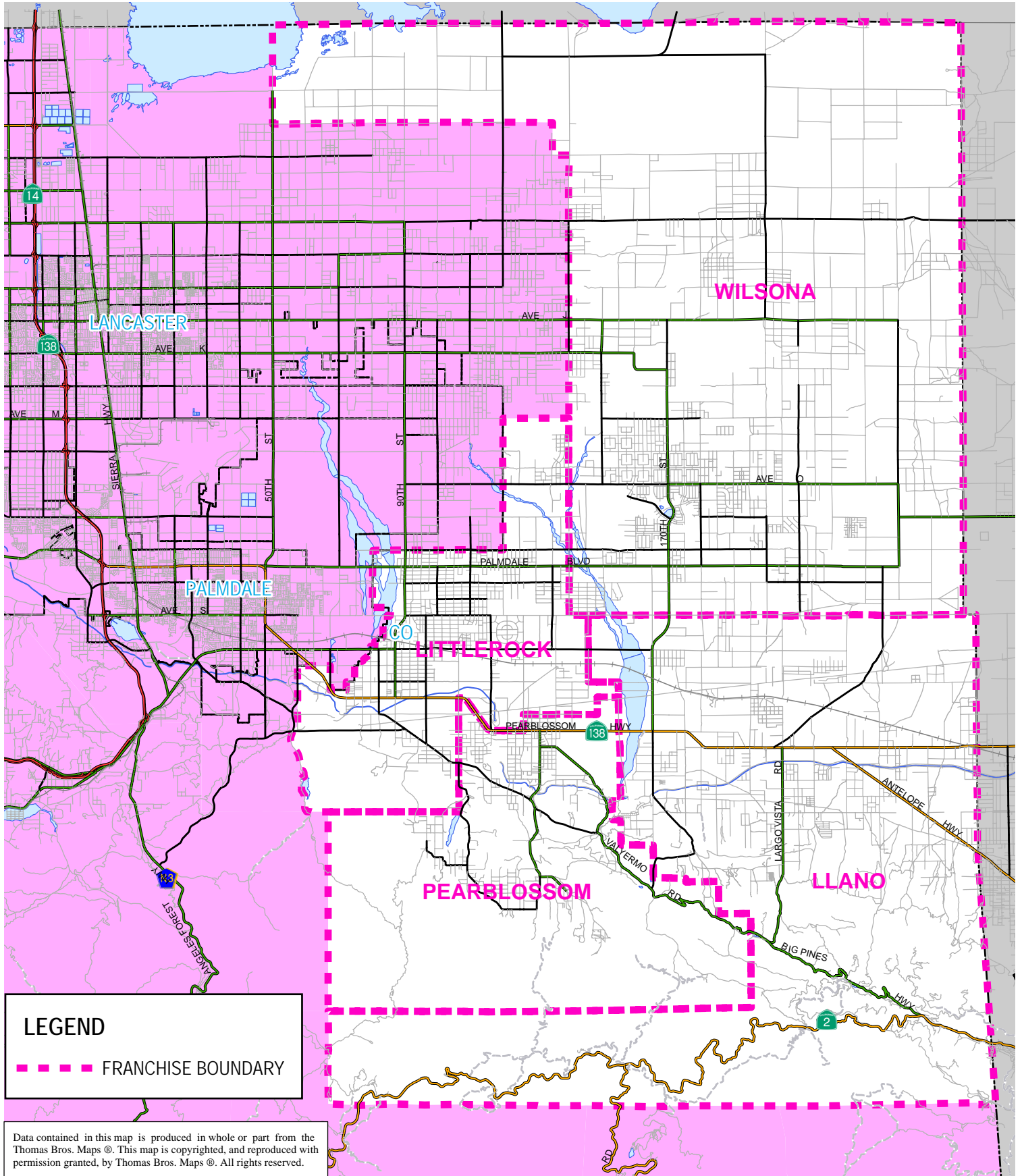
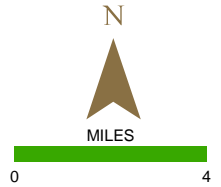
GORMAN / NEENACH / DEL SUR GREEN VALLEY / LEONA VALLEY / QUARTZ HILL



Data contained in this map is produced in whole or part from the Thomas Bros. Maps ©. This map is copyrighted, and reproduced with permission granted, by Thomas Bros. Maps ©. All rights reserved.



LITTLEROCK / LLANO PEARBLOSSOM / WILSONA



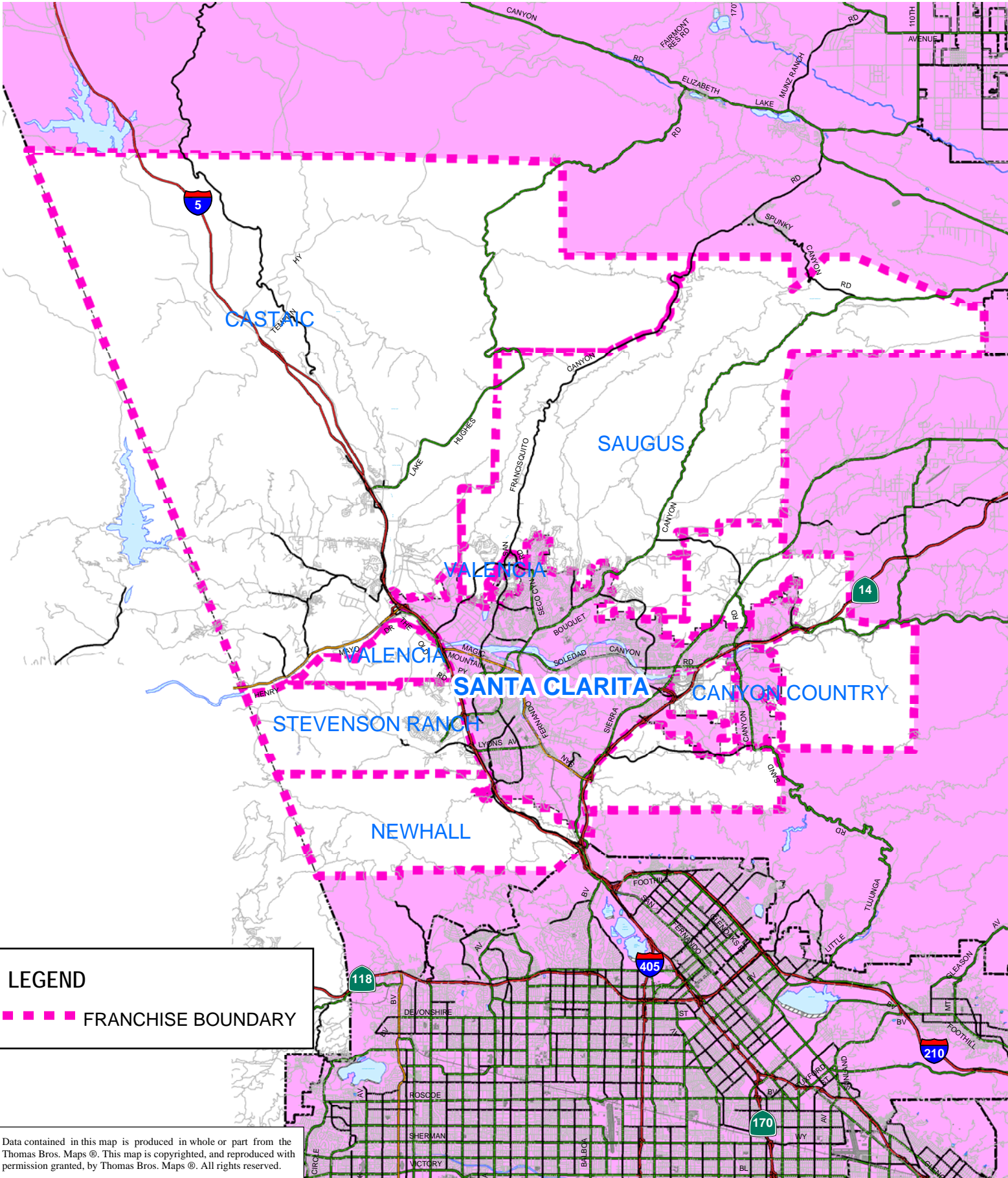
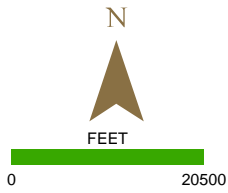
LEGEND

--- FRANCHISE BOUNDARY

Data contained in this map is produced in whole or part from the Thomas Bros. Maps ©. This map is copyrighted, and reproduced with permission granted, by Thomas Bros. Maps ©. All rights reserved.



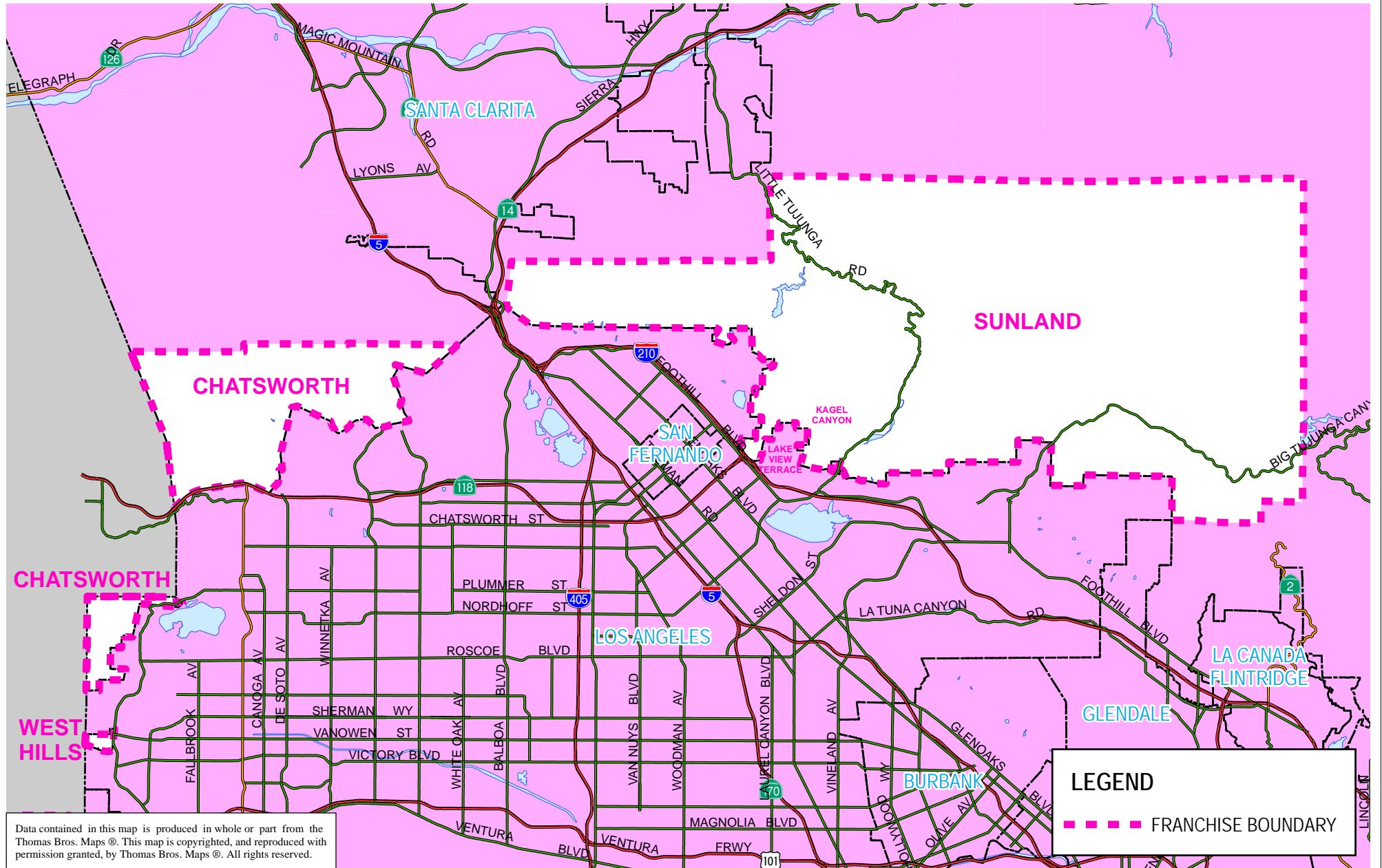
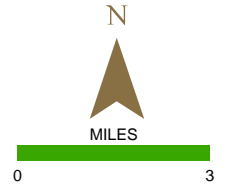
CASTAIC, CANYON COUNTRY, NEWHALL, VALENCIA, SAUGUS AND STEVENSON RANCH





CHATSWORTH / SUNLAND / WEST HILLS

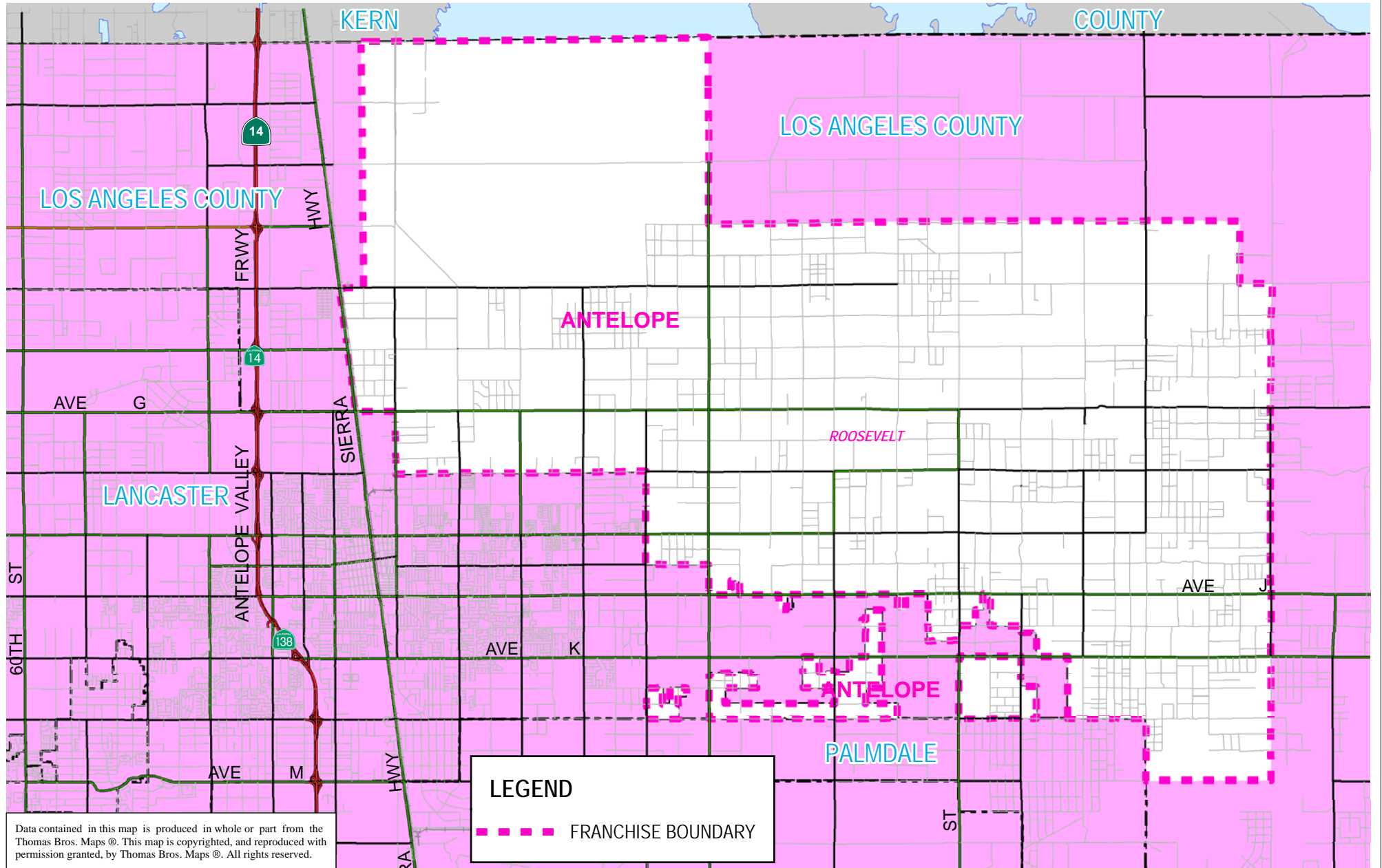
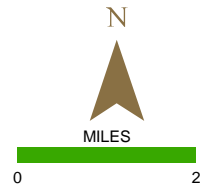
Franchise includes Unincorporated Communities of:
LAKE VIEW TERRACE / KAGEL CANYON



Data contained in this map is produced in whole or part from the Thomas Bros. Maps ©. This map is copyrighted, and reproduced with permission granted, by Thomas Bros. Maps ©. All rights reserved.



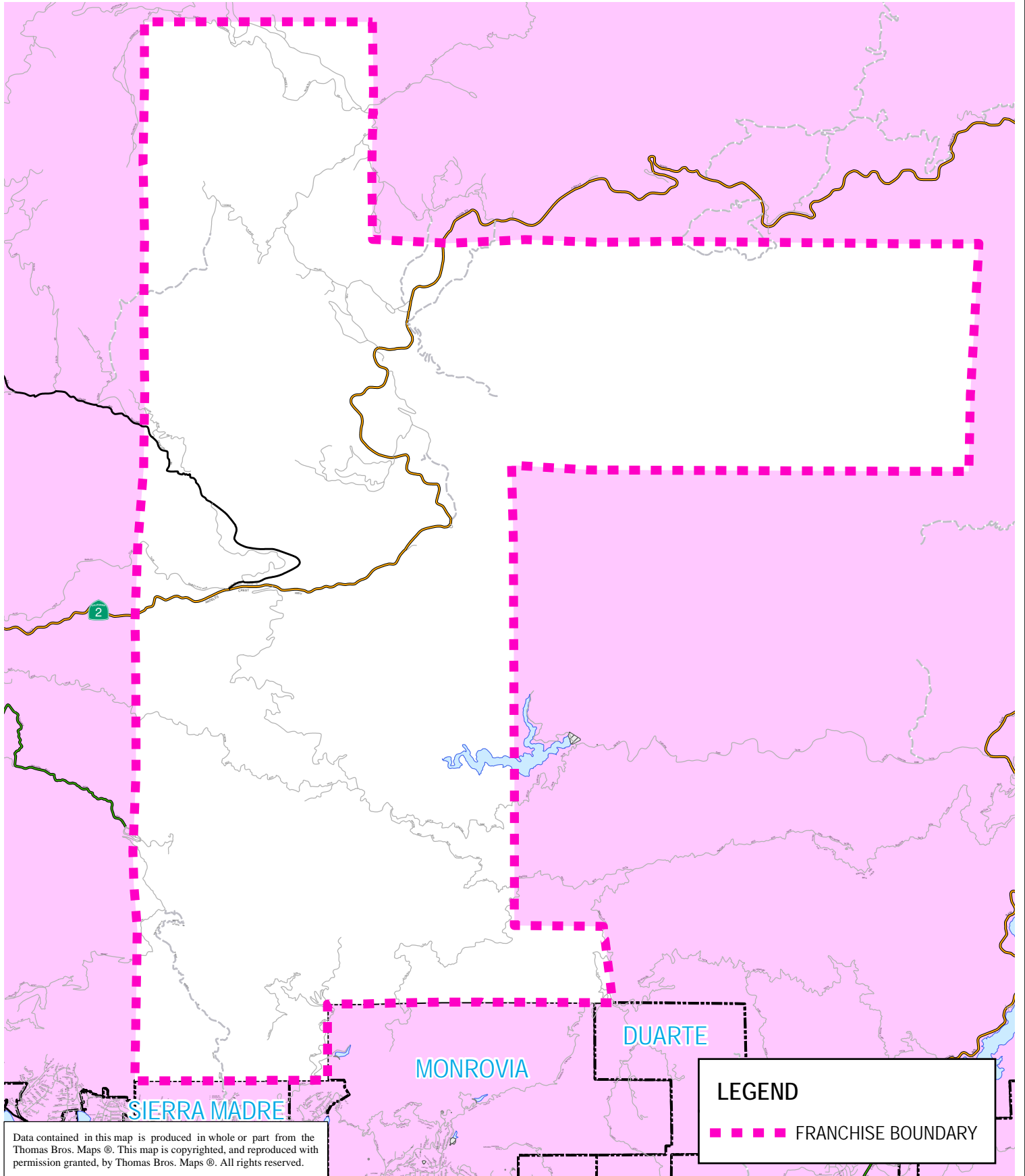
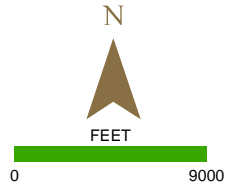
ANTELOPE FRANCHISE AREA INCLUDES THE COMMUNITY OF ROOSEVELT



Data contained in this map is produced in whole or part from the Thomas Bros. Maps ©. This map is copyrighted, and reproduced with permission granted, by Thomas Bros. Maps ©. All rights reserved.



LAMANDA



Data contained in this map is produced in whole or part from the Thomas Bros. Maps ©. This map is copyrighted, and reproduced with permission granted, by Thomas Bros. Maps ©. All rights reserved.

LEGEND

■ ■ ■ ■ ■ FRANCHISE BOUNDARY

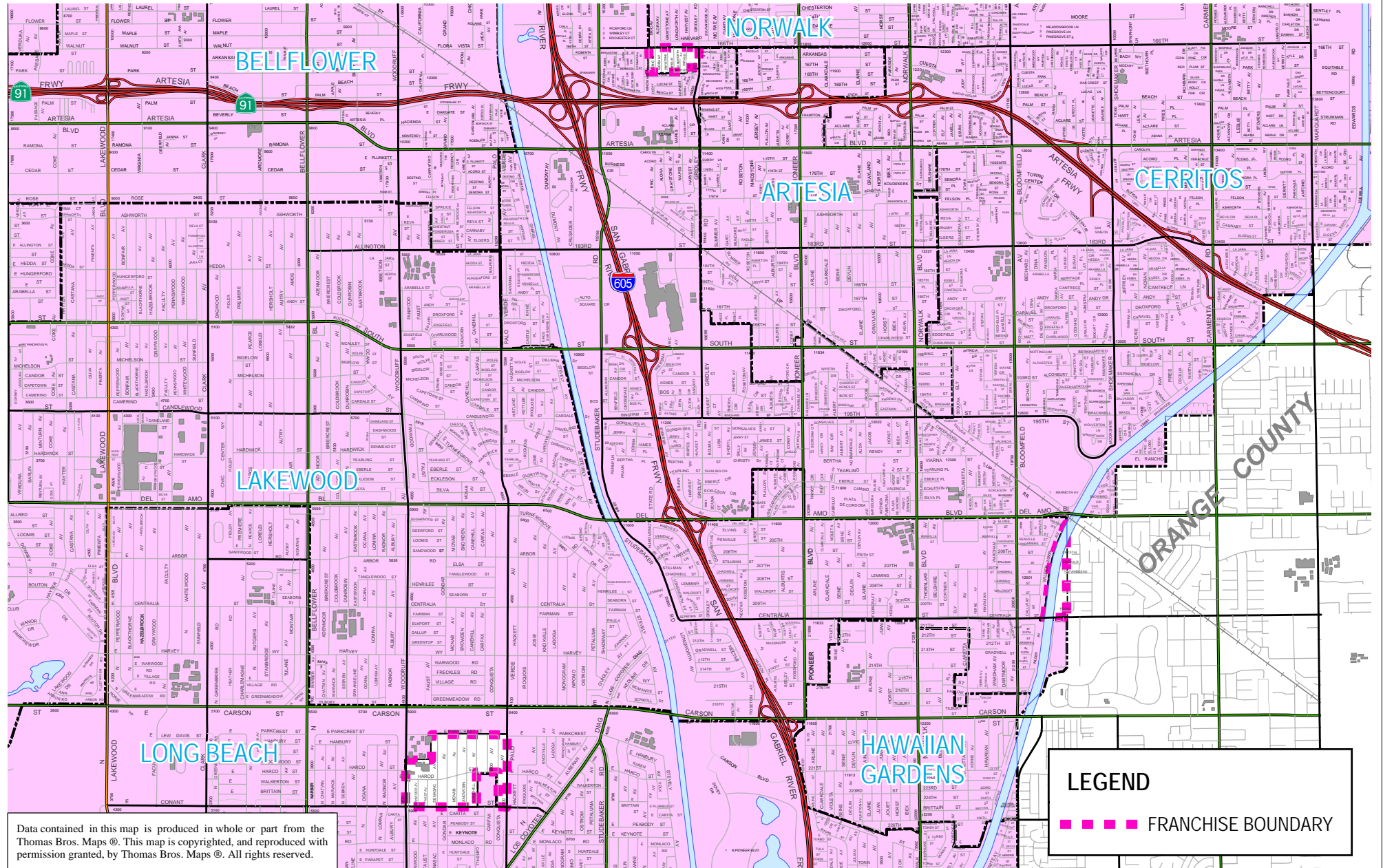


PIONEER & BONNER



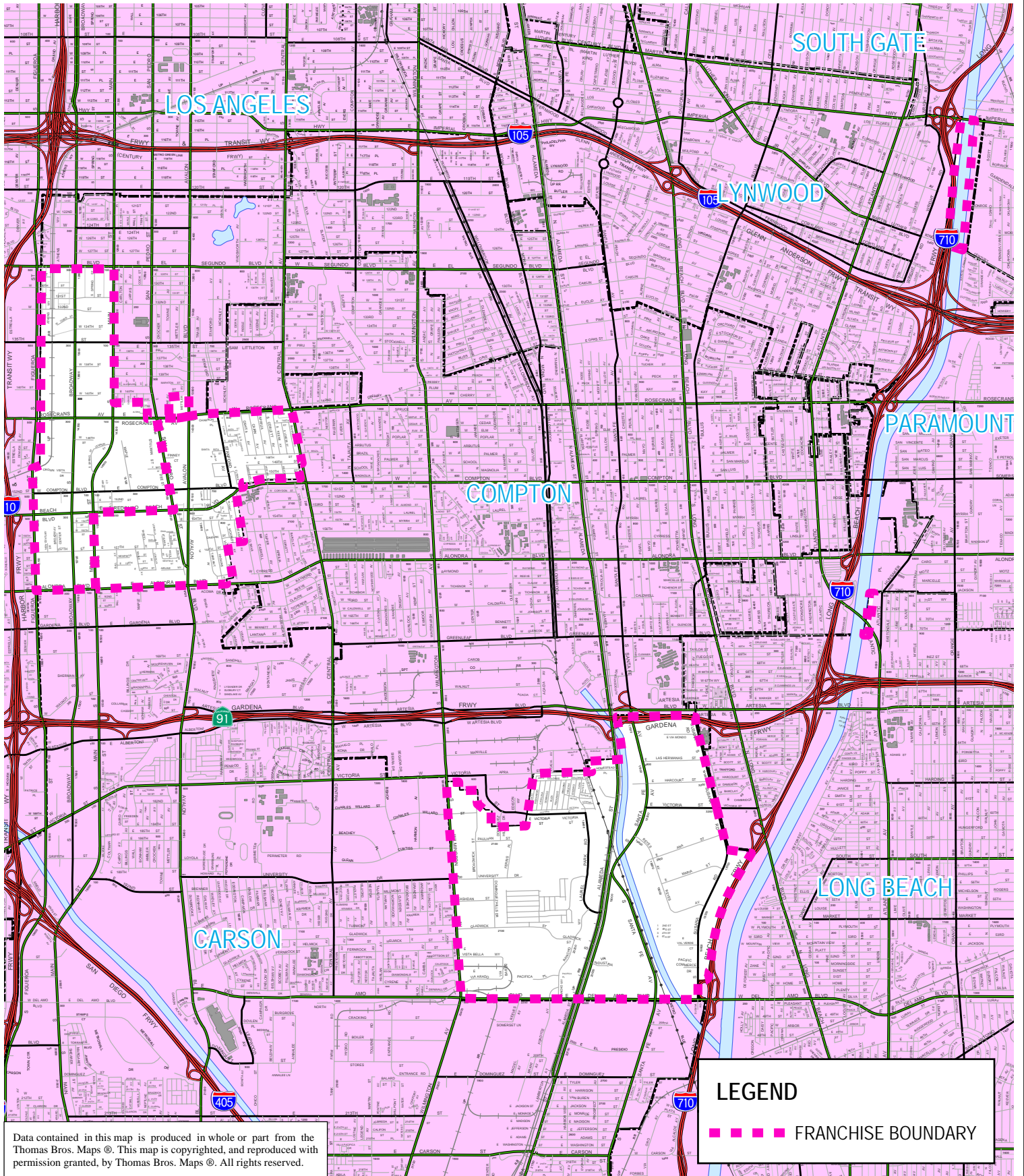
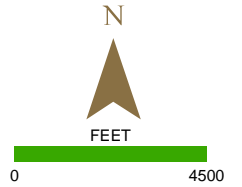
FEET

0 3500





DOMINGUEZ / WEST COMPTON ATHENS / EAST COMPTON



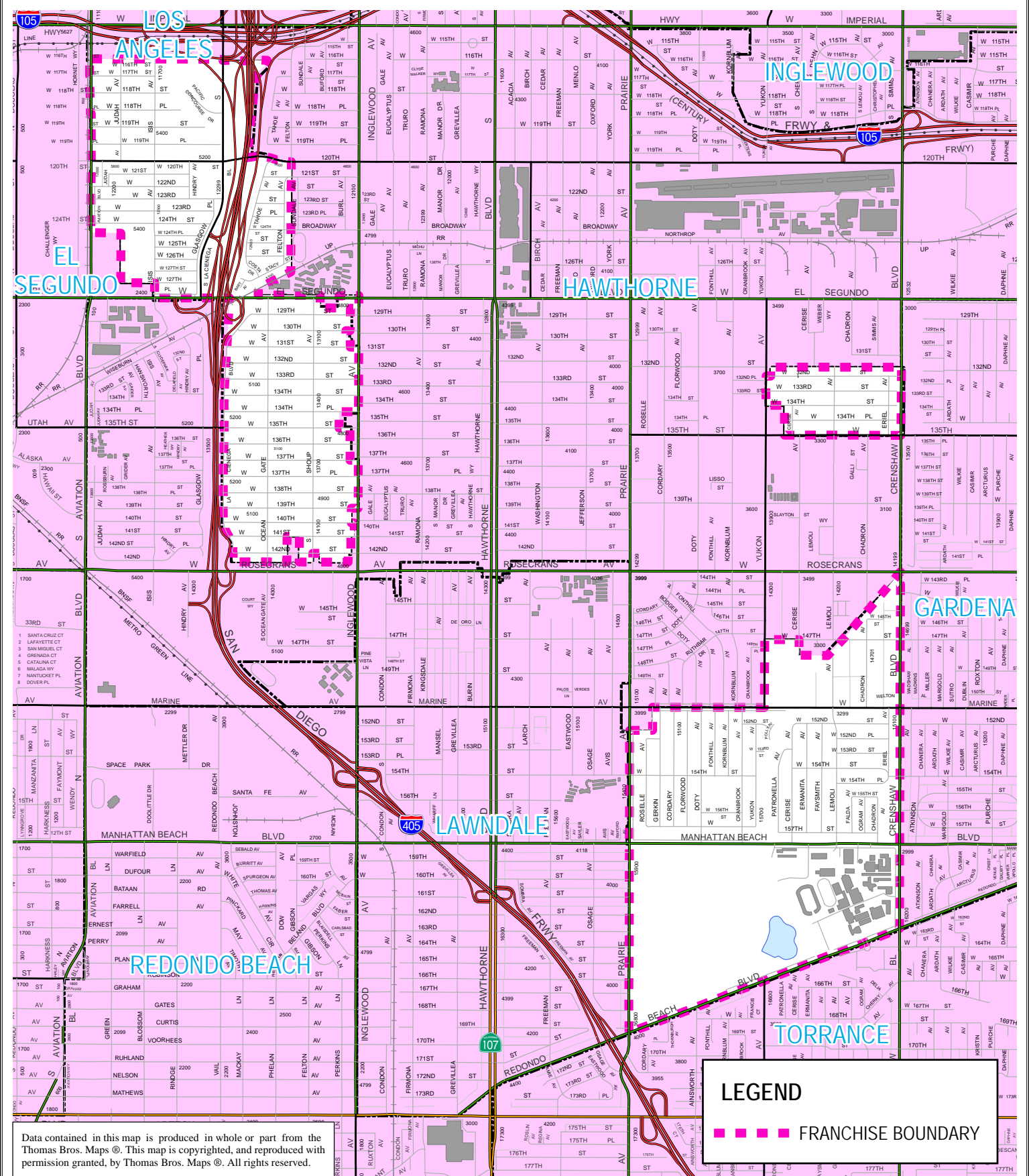
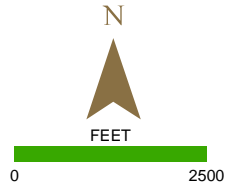
LEGEND

■ ■ ■ ■ ■ FRANCHISE BOUNDARY

Data contained in this map is produced in whole or part from the Thomas Bros. Maps ©. This map is copyrighted, and reproduced with permission granted, by Thomas Bros. Maps ©. All rights reserved.



EL CAMINO VILLAGE DEL AIRE / ALONDRA PARK



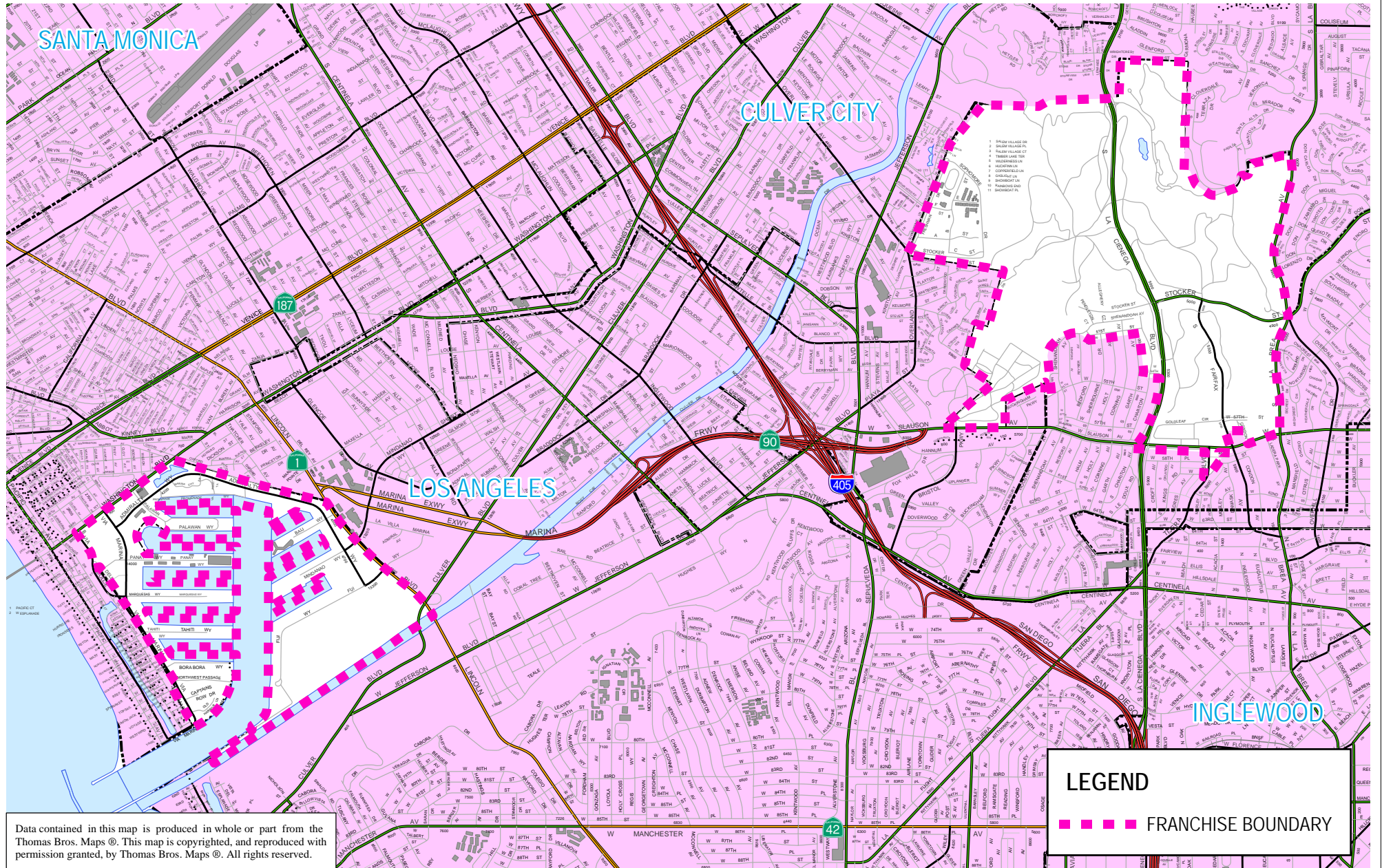
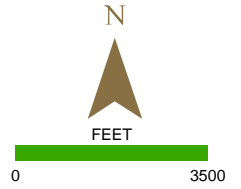
Data contained in this map is produced in whole or part from the Thomas Bros. Maps®. This map is copyrighted, and reproduced with permission granted, by Thomas Bros. Maps®. All rights reserved.

LEGEND

FRANCHISE BOUNDARY



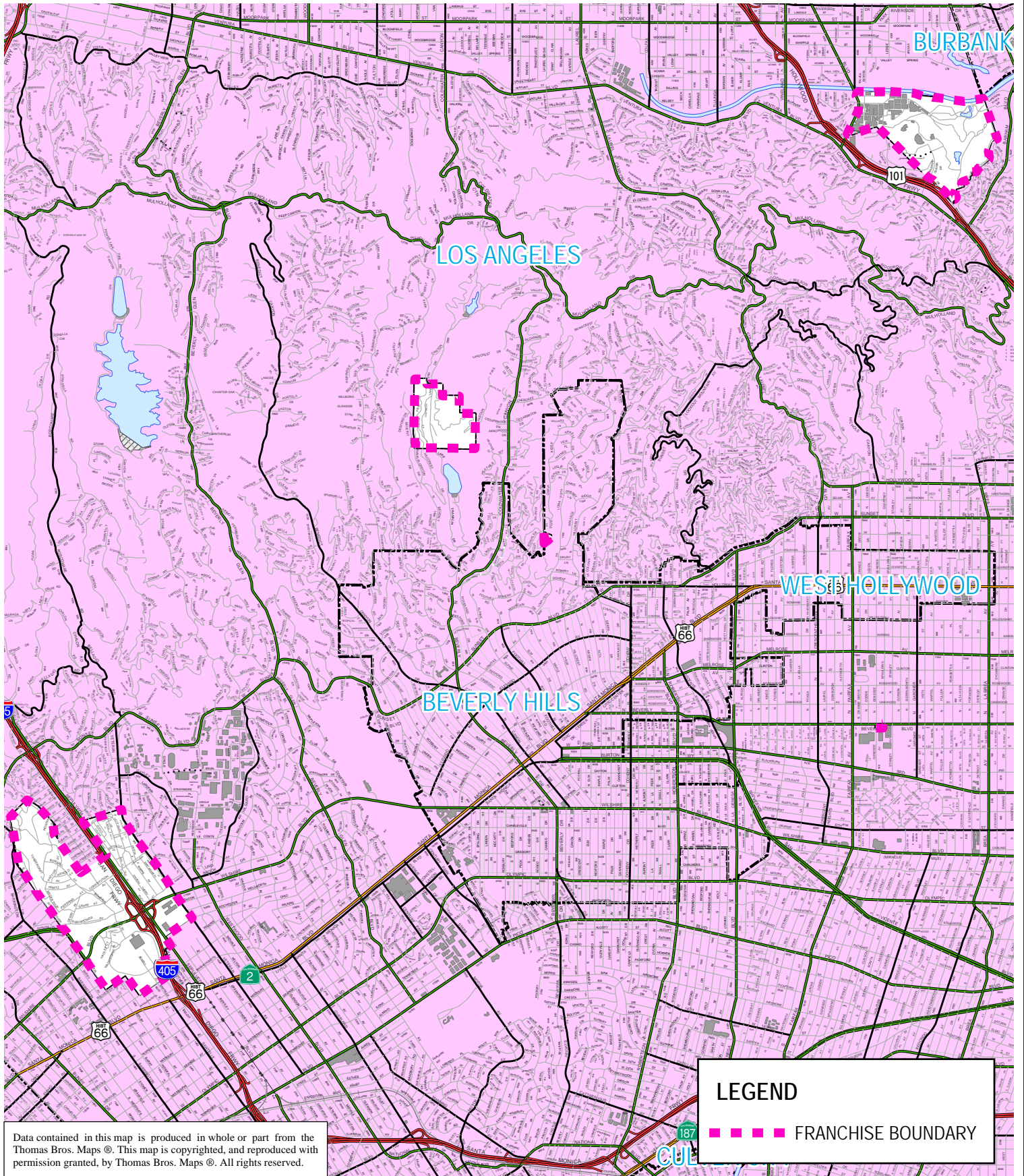
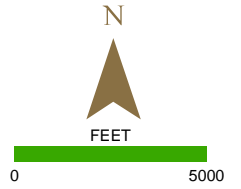
MARINA DEL REY / LADERA HEIGHTS



Data contained in this map is produced in whole or part from the Thomas Bros. Maps ©. This map is copyrighted, and reproduced with permission granted, by Thomas Bros. Maps ©. All rights reserved.



FRANKLIN / DOHENY / UNIVERSAL VETERANS ADMIN CENTER / GILMORE

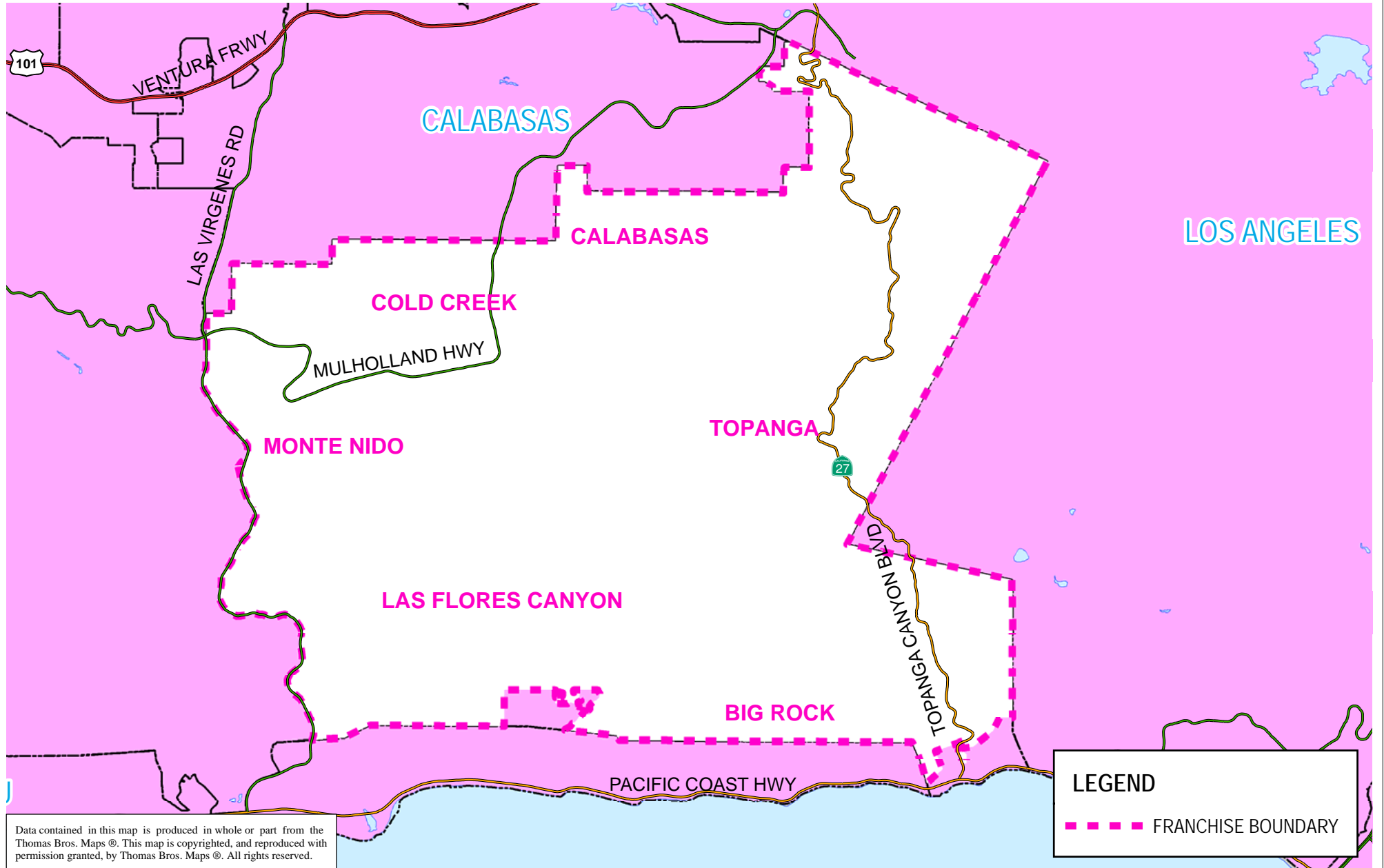
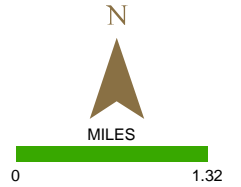


Data contained in this map is produced in whole or part from the Thomas Bros. Maps ©. This map is copyrighted, and reproduced with permission granted, by Thomas Bros. Maps ©. All rights reserved.





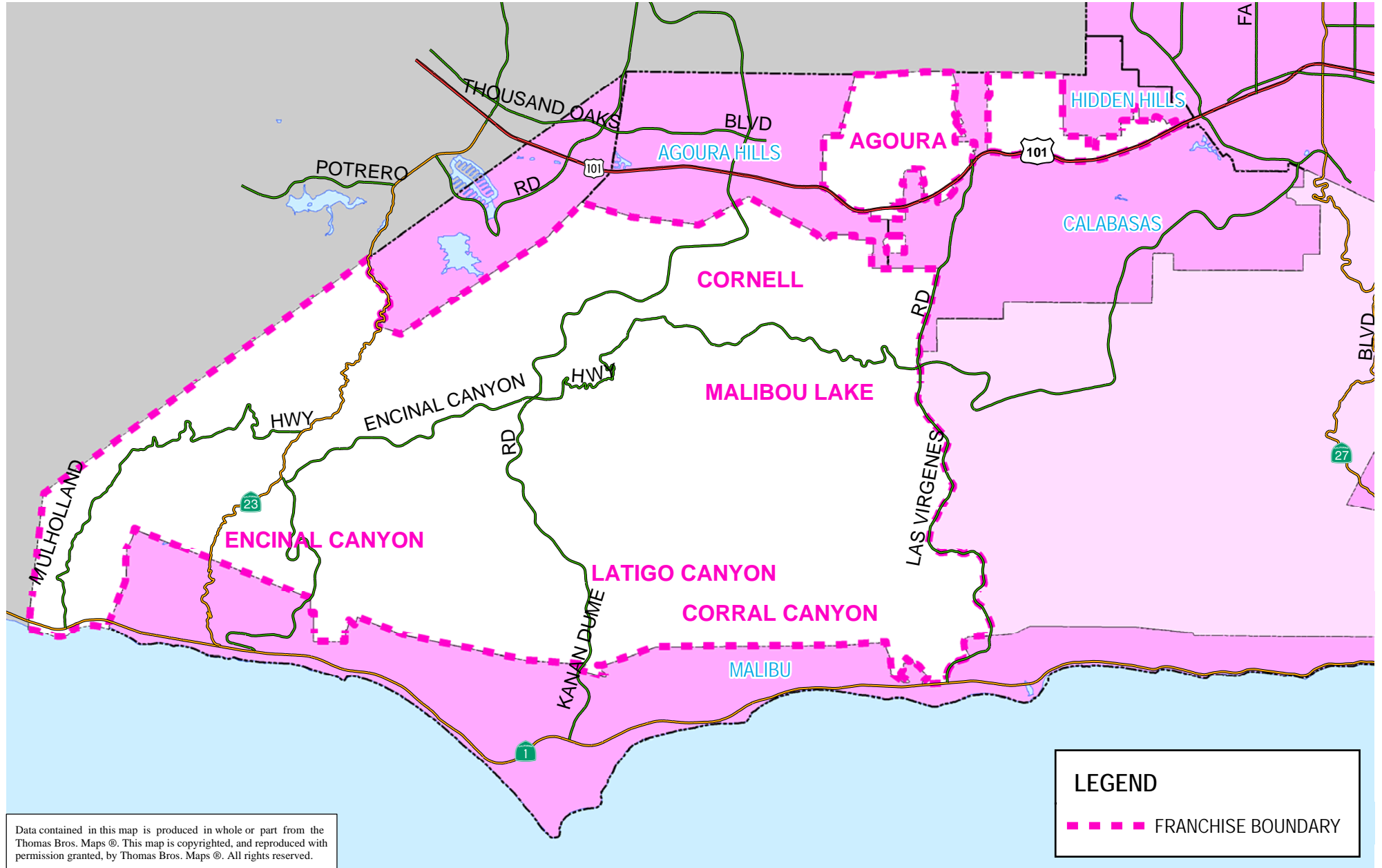
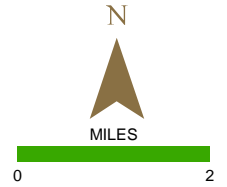
North East Bay and Mountain Area
Franchise includes Unincorporated Communities of:
TOPANGA / COLD CREEK / MONTE NIDO / CALABASAS /
BIG ROCK AND LAS FLORES CANYON



Data contained in this map is produced in whole or part from the Thomas Bros. Maps ©. This map is copyrighted, and reproduced with permission granted, by Thomas Bros. Maps ©. All rights reserved.



North West Bay and Mountain Area
Franchise includes Unincorporated Communities of:
AGOURA / CORNELL / MALIBOU LAKE / CORRAL CANYON /
LATIGO CANYON AND ENCINAL CANYON



Data contained in this map is produced in whole or part from the Thomas Bros. Maps ©. This map is copyrighted, and reproduced with permission granted, by Thomas Bros. Maps ©. All rights reserved.

INITIAL STUDY OF ENVIRONMENTAL FACTORS

1. **Project Title:** Franchise Agreements for Residential Solid Waste Collection Services in Unincorporated Communities in the County of Los Angeles
2. **Lead Agency Name and Address:** County of Los Angeles Department of Public Works, Environmental Programs Division, 900 South Fremont Avenue, Alhambra, California 91803-1331.
3. **Contact Person and Phone Number:** Ms. Virginia Maloles at (626) 458-3562.
4. **Project Location:** County of Los Angeles unincorporated communities of:
 - Altadena/Kinneloa Mesa
 - East Charter Oak/East Ramona/Foothill/Spadra
 - East Pasadena/East San Gabriel/East Arcadia/Royal Oaks
 - Hacienda Heights
 - Agua Dulce/Acton
 - Desert
 - Gorman/Neenach/Del Sur/Green Valley/Leona Valley/Quartz Hill
 - Littlerock/Sun Village/Pearblossom/Wilsona/Llano
 - Castaic/Newhall/Stevenson Ranch/Valencia/Canyon Country/Saugus
 - Chatsworth/Sunland/North Agoura/West Hills
 - Antelope
 - Lamanda
 - Ocean View/La Rambla/West Carson
 - Pioneer/Bonner
 - Dominguez/West Compton/Athens Village/East Compton
 - El Camino Village/Del Aire/Alondra Park
 - Marina Del Rey/Ladera Heights
 - Franklin/Doheny/Universal/Veterans Admin Center/Gilmore
 - North East Bay and Mountain
 - North West Bay and Mountain.
5. **Project Sponsor's Name and Address:** County of Los Angeles Department of Public Works, 900 South Fremont Avenue, Alhambra, California 91803-1331.
6. **General Plan Designation:** The Los Angeles County General Plan
7. **Zoning:** The project areas are zoned as single-family residence, two-family residence, limited multiple residence, unlimited residence, residential agriculture, resident planned development, light agriculture, heavy agriculture, heavy agriculture including hog ranches, commercial highway, restricted business, neighborhood commercial, unlimited commercial, commercial manufacturing, commercial recreation, commercial planned development, light manufacturing, desert-mountain, institutional,

specific plan, restricted heavy manufacturing, manufacturing industrial planned development, heavy manufacturing, unclassified, unlimited manufacturing, aircraft, buffer strip, corner buffer, resort and recreation, watershed, restricted parking, scientific research and development, open space, arts and crafts, and mixed use development.

8. **Description of Project:** The project will consist of franchise agreements between the County of Los Angeles and selected waste collectors to provide refuse, green waste, and recyclables collection services to residential (single family, 2-unit, and multi-family) property owners. Solid waste collection services in these unincorporated areas of the County of Los Angeles are currently provided either through an open-market system in which property owners arrange directly for services with the waste haulers of their choice or through garbage disposal districts. The County of Los Angeles is proposing to change existing residential solid waste collection services for certain County unincorporated areas from an open-market system to a franchise system. Franchisees would be required to provide automated collection services and to offer green waste and recyclables collection.

On September 28, 2004, the County of Los Angeles Board of Supervisors adopted Ordinance No. 2004-0055. This ordinance authorizes the award of nonexclusive, partially exclusive, or wholly exclusive franchise agreements for solid waste collection services in all or part of the unincorporated territory of the County, in accordance with California Public Resources Section 40059, for the purpose of assisting the County in achieving compliance with the State's waste diversion requirements and improving the quality and efficiency of solid waste collection services in the unincorporated territory.

On October 3, 2006, the County Board of Supervisors adopted the Negative Declaration for exclusive Franchise Agreements for residential solid waste collection services in eight County unincorporated areas. On January 1, 2007, the County unincorporated area of La Crescenta became the first of the eight areas to implement franchise solid waste collection services. The County unincorporated areas of Bassett/Valinda/South San Jose Hills, West Whittier, and South San Gabriel were implemented on April 1, 2007.

The County of Los Angeles Department of Public Works will issue requests for proposals for exclusive, semi-exclusive, or non-exclusive franchise agreements to provide residential solid waste collection services in the County unincorporated areas listed in the Project Location Section of this document. Each of these areas is currently served by one, two, or three residential waste collectors providing manual or automatic collection services.

Under the franchise system, all residential waste collectors are required to provide green waste and recyclables collection services. Green waste and recyclables collection services are permitted to be provided either by separate collection, necessitating the use of three vehicles per route, or by commingled collection that is taken to a materials recovery facility (MRF) for separation.

An exclusive, semi-exclusive or non-exclusive franchise is proposed to be awarded for each of the areas. This will either result in having the same number of residential waste haulers, or will reduce the number of waste haulers in a franchise area. Each waste hauler to be awarded a franchise would be required to enter into a franchise agreement with the County and comply with the County's requirements. The franchise agreements incorporate a standard scope of services with modifications as needed to reflect each community's unique characteristics and needs, as well as reporting and customer service requirements and provisions to enhance the County's enforcement of waste collection requirements. Residential property owners in the franchise areas would arrange directly with the franchisee for waste collection services unless they choose to self-haul.

The project is anticipated to increase diversion of green waste and recyclable materials, reduce pollution from collection vehicle exhaust, reduce employee injuries, increase customer services and customer service accountability, improve Assembly Bill 939 program implementation performance and reporting accuracy, and facilitate more efficient enforcement of waste collection laws. The project specifics are detailed in the requests for proposals described above and the draft franchise agreement attached to the requests for proposals.

Waste collectors operating pursuant to a franchise agreement would perform franchise services in accordance with the laws governing the safe collection, transport, recycling, and disposal of residential solid waste.

9. Surrounding Land Uses and Settings:

A. Project Site - The proposed project is located in the remaining unincorporated communities of:

- Altadena/Kinneloa Mesa
- East Charter Oak/East Ramona/Foothill/Spadra
- East Pasadena/East San Gabriel/East Arcadia/Royal Oaks
- Hacienda Heights
- Agua Dulce/Acton
- Desert
- Gorman/Neenach/Del Sur/Green Valley/Leona Valley/Quartz Hill
- Littlerock/Sun Village/Pearblossom/Wilsons/Llano
- Castaic/Newhall/Stevenson Ranch/Valencia/Canyon Country/Saugus
- Chatsworth/Sunland/North Agoura/West Hills
- Antelope
- Lamanda
- Ocean View/La Rambla/West Carson
- Pioneer/Bonner
- Dominguez/West Compton/Athens Village/East Compton
- El Camino Village/Del Aire/Alondra Park
- Marina Del Rey/Ladera Heights

- Franklin/Doheny/Universal/Veterans Admin Center/Gilmore
- North East Bay and Mountain
- North West Bay and Mountain

These communities consist of a mixture of single family homes, duplexes, multi-family properties, businesses, and commercial and industrial properties. Most of the roads in these areas are paved. The population varies in size from one community to another with a total population of approximately 520,000.

B. Surrounding Properties - The surrounding properties consist of the same mix discussed for the project site.

10. Other agencies whose approval is required (and permits needed): None.

ENVIRONMENTAL FACTORS POTENTIALLY AFFECTED

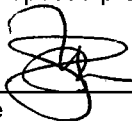
The environmental factors checked below would be potentially affected by this project, involving at least one impact that is a "Potentially Significant Impact" or "Potentially Significant Unless Mitigated," as indicated by the checklist on the following pages.

- | | | |
|--|---|---|
| <input type="checkbox"/> Aesthetics | <input type="checkbox"/> Agriculture Resources | <input type="checkbox"/> Air Quality |
| <input type="checkbox"/> Biological Resources | <input type="checkbox"/> Cultural Resources | <input type="checkbox"/> Geology/Soils |
| <input type="checkbox"/> Hazards & Hazardous Materials | <input type="checkbox"/> Hydrology/Water Quality | <input type="checkbox"/> Land Use/Planning |
| <input type="checkbox"/> Mineral Resources | <input type="checkbox"/> Noise | <input type="checkbox"/> Population/Housing |
| <input type="checkbox"/> Public Services | <input type="checkbox"/> Recreation | <input type="checkbox"/> Transportation/Traffic |
| <input type="checkbox"/> Utilities/Service Systems | <input type="checkbox"/> Mandatory Findings of Significance | |

DETERMINATION: (To be completed by the Lead Agency)

On the basis of this initial evaluation:

- I find that the proposed project COULD NOT have a significant effect on the environment, and a NEGATIVE DECLARATION will be prepared.
- I find that although the proposed project could have a significant effect on the environment, there will not be a significant effect in this case because revisions in the project have been made by or agreed to by the project proponent. A MITIGATED NEGATIVE DECLARATION will be prepared.
- I find that the proposed project MAY have a significant effect on the environment, and an ENVIRONMENTAL IMPACT REPORT is required.
- I find that the proposed project MAY have a potentially significant impact or potentially significant unless mitigated impact on the environment, but at least one effect a) has been adequately analyzed in an earlier document pursuant to applicable legal standards, and b) has been addressed by mitigation measures based on the earlier analysis as described on attached sheets. An ENVIRONMENTAL IMPACT REPORT is required, but it must analyze only the effects that remain to be addressed.
- I find that although the proposed project would have a significant effect on the environment because all potentially significant effects (a) have been analyzed adequately in an earlier ENVIRONMENTAL IMPACT REPORT or NEGATIVE DECLARATION pursuant to applicable standards, and (b) have been avoided or mitigated pursuant to that earlier ENVIRONMENTAL IMPACT REPORT or NEGATIVE DECLARATION, including revisions or mitigation measures that are imposed upon the proposed project, nothing further is required.

Signature 

5/22/07
Date

Virginia Maloles
Printed Name

LACDPW
For

EVALUATION OF ENVIRONMENTAL IMPACTS

- 1 A brief explanation is required for all answers, except "No Impact" answers that are adequately supported by the information sources a lead agency cites in the parentheses following each question. A "No Impact" answer is adequately supported if the referenced information sources show that the impact simply does not apply to projects like the one involved (e.g., the project falls outside a fault rupture zone). A "No Impact" answer should be explained where it is based on project-specific factors as well as general standards (e.g., the project will not expose sensitive receptors to pollutants based on a project-specific screening analysis).
- 2 All answers must take account of the whole action involved, including off-site as well as on-site, cumulative as well as project level, indirect as well as direct, and construction as well as operational impacts.
- 3 "Potential Significant Impact" is appropriate if an effect is significant or potentially significant, or if the lead agency lacks information to make a finding of insignificance. If there are one or more "Potential Significant Impact" entries when the determination is made, an Environmental Impact Report (EIR) is required.
- 4 "Less Than Significant With Mitigation Incorporation" applies where the incorporation of mitigation measures has reduced an effect from "Potential Significant Impact" to a "Less Than Significant Impact." The lead agency must describe the mitigation measures and briefly explain how they reduce the effect to a less than significant level (mitigation measures from Section XVIII, "Earlier Analysis," may be cross-referenced).
- 5 Earlier analyses may be used where, pursuant to the tiering, program EIR or other California Environmental Quality Act process, an effect has been adequately analyzed in an earlier EIR or Negative Declaration. Section 15063(c)(3)(D). Earlier analyses are discussed in Section XVIII at the end of the checklist.
- 6 Lead agencies are encouraged to incorporate into the checklist references, information sources for potential impacts (e.g., general plans and zoning ordinances). See the sample question below. A source list should be attached and other sources used or individuals contacted should be cited in the discussion.

ENVIRONMENTAL CHECKLIST FORM

FRANCHISE SOLID WASTE COLLECTION SYSTEM

		Potential Significant Impact	Less Than Significant With Mitigation Incorporation	Less Than Significant Impact	No Impact
I. AESTHETICS - Would the project:					
a)	Have a substantial adverse effect on a scenic vista?				X
b)	Substantially damage scenic resources, including, but not limited to, trees, rock outcroppings, and historic buildings within a State scenic highway?				X
c)	Substantially degrade the existing visual character or quality of the site and its surroundings?				X
d)	Create a new source of substantial light or glare which would adversely affect day or nighttime views in the area?				X
II. AGRICULTURE RESOURCES - In determining whether impacts to agricultural resources are significant environmental effects, lead agencies may refer to the California Agricultural Land Evaluation and Site Assessment Model (1997) prepared by the California Department of Conservation as an optional model to use in assessing impacts on agriculture and farmland. Would the project:					
a)	Convert Prime Farmland, Unique Farmland, or Farmland of Statewide Importance (Farmland), as shown on the maps prepared pursuant to the Farmland Mapping and Monitoring Program of the California Resources Agency, to nonagricultural use?				X
b)	Conflict with existing zoning for agricultural use or a Williamson Act contract?				X
c)	Involve other changes in the existing environment which, due to their location or nature, could result in conversion of Farmland to nonagricultural use?				X
III. AIR QUALITY - Where available, the significance criteria established by the applicable air quality management or air pollution control district may be relied upon to make the following determinations. Would the project:					
a)	Conflict with or obstruct implementation of the applicable air quality plan?			X	
b)	Violate any air quality standard or contribute substantially to an existing or projected air quality violation?			X	
c)	Result in a cumulatively considerable net increase of any criteria pollutant for which the project region is nonattainment under an applicable Federal or State ambient air quality standard (including releasing emissions which exceed quantitative thresholds for zone precursors)?				X
d)	Expose sensitive receptors to substantial pollutant concentrations?				X
e)	Create objectionable odors affecting a substantial number of people?			X	
IV. BIOLOGICAL RESOURCES - Would the project:					
a)	Have a substantial adverse effect, either directly or through habitat modifications, on any species identified as a candidate, sensitive, or special status species in local or regional plans, policies, or regulations, or by the California Department of Fish and Game or U.S. Fish and Wildlife Service?				X

			Potential Significant Impact	Less Than Significant With Mitigation Incorporation	Less Than Significant Impact	No Impact
	b)	Have a substantial adverse effect on any riparian habitat or other sensitive natural community identified in local or regional plans, policies, regulations or by the California Department of Fish and Game or U.S. Fish and Wildlife Service?				X
	c)	Have a substantial adverse effect on Federally protected wetlands as defined by Section 404 of the Clean Water Act (including, but not limited to, marsh, vernal pool, coastal, etc.) through direct removal, filling, hydrological interruption, or other means?				X
	d)	Interfere substantially with the movement of any native resident, migratory fish, or wildlife species; or with established native resident or migratory wildlife corridors; or impede the use of native wildlife nursery sites?				X
	e)	Conflict with any local policies or ordinances protecting biological resources, such as a tree preservation policy or ordinance?				X
	f)	Conflict with the provisions of an adopted Habitat Conservation Plan; Natural Community Conservation Plan; or other approved local, regional, or State habitat conservation plan?				X
V. CULTURAL RESOURCES - Would the project:						
	a)	Cause a substantial adverse change in the significance of a historical resource as defined in §15064.5?				X
	b)	Cause a substantial adverse change in the significance of an archaeological resource pursuant to §15064.5?				X
	c)	Directly or indirectly destroy a unique paleontological resource or site or unique geologic feature?				X
	d)	Disturb any human remains, including those interred outside of formal cemeteries?				X
VI. GEOLOGY AND SOILS - Would the project:						
	a)	Expose people or structures to potential substantial adverse effects, including the risk of loss, injury, or death involving:				
	i)	Rupture of a known earthquake fault, as delineated on the most recent Alquist-Priolo Earthquake Fault Zoning Map issued by the State Geologist for the area or based on other substantial evidence of a know fault? Refer to Division of Mines and Geology Special Publication 42.				X
	ii)	Strong seismic ground shaking?				X
	iii)	Seismic-related ground failure, including liquefaction?				X
	iv)	Landslides?				X
	b)	Result in substantial soil erosion or the loss of topsoil?				X
	c)	Be located on a geologic unit or soil that is unstable, or that would become unstable as a result of the project, and potentially result in on- or off-site landslide, lateral spreading, subsidence, liquefaction, or collapse?				X

			Potential Significant Impact	Less Than Significant With Mitigation Incorporation	Less Than Significant Impact	No Impact
	d)	Be located on expansive soil, as defined in Table 18-1-B of the Uniform Building Code (1994), creating substantial risks to life or property?				X
	e)	Have soils incapable of adequately supporting the use of septic tanks or alternative waste water disposal systems where sewers are not available for the disposal of waste water?				X
VII. HAZARDS AND HAZARDOUS MATERIALS - Would the project:						
	a)	Create a significant hazard to the public or the environment through the routine transport, use, or disposal of hazardous materials?				X
	b)	Create a significant hazard to the public or the environment through reasonably foreseeable upset and accident conditions involving the release of hazardous materials into the environment?			X	
	c)	Emit hazardous emissions or handle hazardous or acutely hazardous materials, substances, or waste within one-quarter mile of an existing or proposed school?			X	
	d)	Be located on a site which is included on a list of hazardous materials sites compiled pursuant to Government Code, Section 65962.5, and, as a result, would it create a significant hazard to the public or the environment?				X
	e)	For a project located within an airport land use plan or, where such a plan has not been adopted, within two miles of a public airport or public use airport, would the project result in a safety hazard for people residing or working in the project area?				X
	f)	For a project within the vicinity of a private airstrip, would the project result in a safety hazard for people residing or working in the project area?				X
	g)	Impair implementation of or physically interfere with an adopted emergency response plan or emergency evacuation plan?				X
	h)	Expose people or structures to a significant risk of loss, injury, or death involving wildland fires, including where wildlands are adjacent to urbanized areas or where residences are intermixed with wildlands?				X
VIII. HYDROLOGY AND WATER QUALITY - Would the project:						
	a)	Violate any water quality standards or waste discharge requirements?			X	
	b)	Substantially deplete groundwater supplies or interfere substantially with groundwater recharge such that there would be a net deficit in aquifer volume or a lowering of the local groundwater table level (e.g., the production rate of preexisting nearby wells would drop to a level which would not support existing land uses or planned uses for which permits have been granted)?				X
	c)	Substantially alter the existing drainage pattern of the site or area, including through the alteration of the course of a stream or river, in a manner which would result in substantial erosion or siltation on- or off-site?				X

		Potential Significant Impact	Less Than Significant With Mitigation Incorporation	Less Than Significant Impact	No Impact
	d)	Substantially alter the existing drainage pattern of the site or area, including through the alteration of the course of a stream or river, or substantially increase the rate or amount of surface runoff in a manner which would result in flooding on- or off-site?			X
	e)	Create or contribute runoff water which would exceed the capacity of existing or planned stormwater drainage systems or provide substantial additional sources of polluted runoff?		X	
	f)	Otherwise substantially degrade water quality?			X
	g)	Place housing within a 100-year flood hazard area as mapped on a Federal Flood Hazard Boundary or Flood Insurance Rate Map or other flood hazard delineation map?			X
	h)	Place within a 100-year flood hazard area structures which would impede or redirect flood flows?			X
	i)	Expose people or structures to a significant risk of loss, injury, or death involving flooding, including flooding as a result of the failure of a levee or dam?			X
	j)	Inundation by seiche, tsunami, or mudflow?			X
IX. LAND USE AND PLANNING - Would the project:					
	a)	Physically divide an established community?			X
	b)	Conflict with any applicable land use plan, policy, or regulation of any agency with jurisdiction over the project (including, but not limited to, the general plan, specific plan, local coastal program, or zoning ordinance) adopted for the purpose of avoiding or mitigating an environmental effect?			X
	c)	Conflict with any applicable habitat conservation plan or natural community conservation plan?			X
X. MINERAL RESOURCES - Would the project:					
	a)	Result in the loss of availability of a known mineral resource that would be of value to the region and the residents of the State?			X
	b)	Result in the loss of availability of a locally-important mineral resource recovery site delineated on a local general plan, specific plan, or other land use plan?			X
XI. NOISE - Would the project result in:					
	a)	Exposure of persons to or generation of noise levels in excess of standards established in the local general plan or ordinance or applicable standards of other agencies?		X	
	b)	Exposure of persons to or generation of excessive groundborne vibration or ground borne noise levels?		X	
	c)	A substantial permanent increase in ambient noise levels in the project vicinity above levels existing without the project?			X
	d)	A substantial temporary or periodic increase in ambient noise levels in the project vicinity above levels existing without the project?			X

		Potential Significant Impact	Less Than Significant With Mitigation Incorporation	Less Than Significant Impact	No Impact
	e)	For a project located within an airport land use plan or, where such a plan has not been adopted, within two miles of a public airport or public use airport, would the project expose people residing or working in the project area to excessive noise levels?			X
	f)	For a project within the vicinity of a private airstrip, would the project expose people residing or working in the project area to excessive noise levels?			X
XII. POPULATION AND HOUSING - Would the project:					
	a)	Induce substantial population growth in an area, either directly (e.g., by proposing new homes and businesses) or indirectly (e.g., through extension of roads or other infrastructure)?			X
	b)	Displace substantial numbers of existing housing, necessitating the construction of replacement housing elsewhere?			X
	c)	Displace substantial numbers of people, necessitating the construction of replacement housing elsewhere?			X
XIII. PUBLIC SERVICES					
	a)	Would the project result in substantial adverse physical impacts associated with the provision of new or physically altered governmental facilities, need for new or physically altered governmental facilities, the construction of which could cause significant environmental impacts, in order to maintain acceptable service ratios, response times, or other performance objectives for any of the public services:			
		Fire protection?			X
		Police protection?			X
		Schools?			X
		Parks?			X
		Other public facilities?			X
XIV. RECREATION-					
	a)	Would the project increase the use of existing neighborhood and regional parks or other recreational facilities such that substantial physical deterioration of the facility would occur or be accelerated?			X
	b)	Does the project include recreational facilities or require the construction or expansion of recreational facilities which might have an adverse physical effect on the environment?			X
XV. TRANSPORTATION/TRAFFIC - Would the project:					
	a)	Cause an increase in traffic which is substantial in relation to the existing traffic load and capacity of the street system (i.e., result in a substantial increase in either the number of vehicle trips, the volume to capacity ratio on roads, or congestion at intersections)?			X

			Potential Significant Impact	Less Than Significant With Mitigation Incorporation	Less Than Significant Impact	No Impact
	b)	Exceed, either individually or cumulatively, a level of service standard established by the County Congestion Management Agency for designated roads or highways?				X
	c)	Result in a change in air traffic patterns, including either an increase in traffic levels or a change in location that results in substantial safety risks?				X
	d)	Substantially increase hazards due to a design feature (e.g., sharp curves or dangerous intersections) or incompatible uses (e.g., farm equipment)?				X
	e)	Result in inadequate emergency access?				X
	f)	Result in inadequate parking capacity?				X
	g)	Conflict with adopted policies, plans, or programs supporting alternative transportation (e.g., bus turnouts, bicycle racks)?				X
XVI. UTILITIES AND SERVICE SYSTEMS - Would the project:						
	a)	Exceed wastewater treatment requirements of the applicable Regional Water Quality Control Board?				X
	b)	Require or result in the construction of new water or wastewater treatment facilities or expansion of existing facilities, the construction of which could cause significant environmental effects?				X
	c)	Require or result in the construction of new stormwater drainage facilities or expansion of existing facilities, the construction of which could cause significant environmental effects?				X
	d)	Have sufficient water supplies available to serve the project from existing entitlements and resources, or are new or expanded entitlements needed?				X
	e)	Result in a determination by the wastewater treatment provider which serves or may serve the project that it has adequate capacity to serve the project's projected demand in addition to the provider's existing commitments?				X
	f)	Be served by a landfill with sufficient permitted capacity to accommodate the project's solid waste disposal needs?				X
	g)	Comply with Federal, State, and local statutes and regulations related to solid waste?				X
XVII. MANDATORY FINDINGS OF SIGNIFICANCE						
	a)	Does the project have the potential to degrade the quality of the environment, substantially reduce the habitat of a fish or wildlife species, cause a fish or wildlife population to drop below self-sustaining levels, threaten to eliminate a plant or animal community, reduce the number or restrict the range of a rare or endangered plant or animal, or eliminate important examples of the major periods of California history or prehistory?				X

		Potential Significant Impact	Less Than Significant With Mitigation Incorporation	Less Than Significant Impact	No Impact
b)	Does the project have impacts that are individually limited, but cumulatively considerable? ("Cumulatively considerable" means that the incremental effects of a project are considerable when viewed in connection with the effects of past projects, the effects of other current projects, and the effects of probable future projects.)				X
c)	Does the project have environmental effects which will cause substantial adverse effects on human beings, either directly or indirectly?				X

XVIII. DISCUSSION OF WAYS TO MITIGATE SIGNIFICANCE EFFECTS

Section 15041 (a) of the State California Environmental Quality Act guidelines states that a lead agency for a project has authority to require changes in any or all activities involved in the project in order to lessen or avoid significant effects on the environment. No significant effects have been identified.

ATTACHMENT A

DISCUSSION OF ENVIRONMENTAL FACTORS

FRANCHISE AGREEMENTS FOR RESIDENTIAL SOLID WASTE COLLECTION SERVICES IN UNINCORPORATED COMMUNITIES IN THE COUNTY OF LOS ANGELES

I. AESTHETICS - Would the project:

a) ***Have a substantial adverse effect on a scenic vista?***

No Impact. The proposed project, award of residential solid waste collection franchises in 20 County of Los Angeles unincorporated communities would not have a substantial adverse effect on any scenic vistas. No construction is proposed, and waste collection activities would continue at the same residential locations and streets and would not appear to be significantly different from current residential waste collection activities. The same amount of residential solid waste would be collected in these areas, and the number of residential waste collectors in each area would remain the same or fewer than the existing.

b) ***Substantially damage scenic resources, including, but not limited to, trees, rock outcroppings, and historic buildings within a State scenic highway?***

No Impact. The proposed project would not substantially damage any scenic resources. No construction is proposed and waste collection activities would continue to take place in residential areas and streets.

c) ***Substantially degrade the existing visual character or quality of the site and its surroundings?***

No Impact. The proposed project would not change the visual quality of the franchise areas, transport route areas, or surrounding areas. No construction is proposed, and waste collection activities would continue at the same residential locations and streets and would not appear to be significantly different from current residential waste collection activities. The same amount of residential solid waste would be collected in these areas, and the number of residential waste collectors in each area would remain the same or fewer than the existing.

d) ***Create a new source of substantial light or glare which would adversely affect day or nighttime views in the area?***

No Impact. The proposed project would not create a new source of substantial light or glare. No construction is proposed and residential waste collection would only take place from 6 a.m. to 6 p.m. (daylight hours) Monday through Saturday.

II. AGRICULTURE RESOURCES - Would the project:

- a) ***Convert Prime Farmland, Unique Farmland, or Farmland of Statewide Importance (Farmland), as shown on the maps prepared pursuant to the Farmland Mapping and Monitoring Program of the California Resources Agency, to nonagricultural use?***

No impact. The proposed project would not change any land uses.

- b) ***Conflict with existing zoning for agricultural use or a Williamson Act contract?***

No impact. The proposed project would not conflict with any zoning for agricultural use or local government contracts with private landowners for the purpose of restricting specific parcels of land to agricultural or related open space use in return for much lower property tax assessments (Williamson Act contracts) in the project area.

- c) ***Involve other changes in the existing environment which, due to their location or nature, could result in conversion of Farmland, to nonagricultural use?***

No impact. No construction or change in use is proposed and the proposed project would not involve any changes in the existing environment that could result in the conversion of Farmland to nonagricultural use.

III. AIR QUALITY - Would the project:

- a) ***Conflict with or obstruct implementation of the applicable air quality plan?***

Less than significant impact. The proposed project would not conflict with or obstruct implementation of the applicable air quality plan since the project would reduce the impacts from vehicle emissions compared to current residential waste collection activities in the franchise areas. No construction or change in use is proposed, waste collection activities would continue to occur at the same residential locations and streets with the same amount of residential waste collected, and the number of residential waste collectors in each franchise area would remain the same or fewer than the existing.

The proposed franchise agreements require franchise waste collectors to comply with all applicable air pollution control laws, such as diesel particulate matter control measures applicable to solid waste collection vehicles as set forth in Article 4 of Chapter 3, Division 3, Title 13, California Code of Regulations.

In addition, the proposed franchise agreements require all collection services to be fully automated, whereas some of the current residential waste collectors still use manual collection vehicles. This requirement is anticipated to further reduce vehicle emissions due to the replacement of older diesel or other higher-emission trucks with newer automated vehicles, as well as the elimination of the longer truck idling periods used in manual collection. These emissions reductions would more than offset increases in emissions, if any, due to automated collection from one side of the street at a time instead of manual collection from both sides of the street in a single trip.

- b) *Violate any air quality standard or contribute substantially to an existing or projected air quality violation?***

Less than significant impact. The proposed project would not violate any air quality standard or contribute substantially to an existing or projected air quality violation. As discussed in Section III.a above, the project would reduce the impacts from vehicle emissions compared to current residential waste collection activities in the franchise areas.

- c) *Result in a cumulatively considerable net increase of any criteria pollutant for which the project region is nonattainment under an applicable Federal or State ambient air quality standard (including releasing emissions which exceed quantitative thresholds for ozone precursors)?***

No impact. The proposed project would not result in a cumulatively considerable net increase of any criteria pollutant for which the project region is nonattainment under an applicable Federal or State ambient air quality standard. As discussed in Section III.a above, the project would reduce the impacts from vehicle emissions compared to current residential waste collection activities in the franchise areas.

- d) *Expose sensitive receptors to substantial pollutant concentrations?***

No impact. The proposed project would not expose sensitive receptors to substantial pollutant concentrations, as discussed in Section III.a above.

- e) *Create objectionable odors affecting a substantial number of people?***

Less than significant impact. The proposed project would not create objectionable odors affecting a substantial number of people. As discussed in Section III.a above, the project would reduce the impacts from vehicle emissions compared to current residential waste collection activities in the franchise areas. Residential waste would be collected in the franchise areas and taken to a municipal solid waste management facility in the region. Collection of residential solid waste would be fully automated and placed in carts with stable bases and attached tight-fitting lids with wheels that reduce animal scavenging, litter, and spill and franchise waste collectors would be required to clean up all litter, spills and leaks. Any remaining odors or emissions from residential waste collection vehicles would be temporary due to the dynamic nature of the collection process and in low concentrations due to dilution from ambient air.

IV. BIOLOGICAL RESOURCES - Would the project:

- a) ***Have a substantial adverse effect, either directly or through habitat modifications, on any species identified as a candidate, sensitive, or special status species in local or regional plans, policies, or regulations, or by the California Department of Fish and Game or U.S. Fish and Wildlife Service?***

No impact. The proposed project would not have a substantial adverse effect, either directly or through habitat modifications, on any species identified as a candidate, sensitive, or special status species in local or regional plans, policies, or regulations, or by the California Department of Fish and Game or U.S. Fish and Wildlife Service. The majority of the franchise areas are densely developed urban areas. No construction or change in use is proposed, waste collection activities would continue to occur at the same residential locations and streets with the same amount of residential waste collected, and the number of residential waste collectors in each franchise area would remain the same or fewer than the existing.

- b) ***Have a substantial adverse effect on any riparian habitat or other sensitive natural community identified in local or regional plans, policies, regulations or by the California Department of Fish and Game or U.S. Fish and Wildlife Service?***

No impact. The proposed project would not have a substantial adverse effect on any riparian habitat or other sensitive natural community identified in local or regional plans, policies, regulations or by the California Department of Fish and Game or U.S. Fish and Wildlife Service. The majority of the franchise areas are densely developed urban areas. No construction or change in use is proposed, waste collection activities would continue to occur at the same residential locations and streets with the same amount of

residential waste collected, and the number of residential waste collectors in each franchise area would remain the same or fewer than the existing.

- c) ***Have a substantial adverse effect on Federally protected wetlands as defined by Section 404 of the Clean Water Act (including, but not limited to, marsh, vernal pool, coastal, etc.) through direct removal, filling, hydrological interruption, or other means?***

No impact. The proposed project would not have a substantial adverse effect on any federally protected wetlands through direct removal, filling, hydrological interruption, or other means. No construction or change in use is proposed, and waste collection activities would continue to occur at the same residential locations and streets. Waste collection activities would not take place in or remove, fill or hydrologically interrupt any marshes, vernal pools or other federally protected wetlands.

- d) ***Interfere substantially with the movement of any native resident or migratory fish or wildlife species or with established native resident or migratory wildlife corridors, or impede the use of native wildlife nursery sites?***

No impact. The proposed project would not substantially interfere with the movement of any native resident or migratory fish or wildlife species or with established native resident or migratory wildlife corridors, or impede the use of native wildlife nursery sites. The majority of the franchise areas are densely developed urban areas. No construction or change in use is proposed, waste collection activities would continue to occur at the same residential locations and streets with the same amount of residential waste collected, and the number of residential waste collectors in each franchise area would remain the same or fewer than the existing.

- e) ***Conflict with any local policies or ordinances protecting biological resources, such as a tree preservation policy or ordinance?***

No impact. The proposed project would not conflict with any local policies or ordinances protecting biological resources. No construction or change in use is proposed, waste collection activities would continue to occur at the same residential locations and streets with the same amount of residential waste collected, and the number of residential waste collectors in each franchise area would remain the same or fewer than the existing.

- f) ***Conflict with the provisions of an adopted Habitat Conservation Plan, Natural Community Conservation Plan, or other approved local, regional, or state habitat conservation plan?***

No impact. The proposed project would not conflict with the provisions of any applicable Habitat Conservation Plan, Natural Community Conservation Plan, or other applicable local, regional, or state habitat conservation plan. Most of the franchise areas are densely developed urban areas. No construction or change in use is proposed, waste collection activities would continue to take place at the same residential locations and streets with the same amount of residential waste collected, and the number of residential waste collectors in each franchise area would remain the same or fewer than the existing.

V. CULTURAL RESOURCES - Would the project:

- a) *Cause a substantial adverse change in the significance of a historical resource as defined in Section 15064.5?***

No impact. The proposed project would not cause a substantial adverse change in the significance of a historical resource. No physical demolition, destruction, relocation, or alteration of any historical resource or its immediate surroundings is proposed.

- b-d) *Cause a substantial adverse change in the significance of an archaeological resource pursuant to Section 15064.5; directly or indirectly destroy a unique paleontological resource or site or unique geologic feature; or disturb any human remains, including those interred outside of formal cemeteries?***

No impact. The proposed project would not cause a substantial adverse change in the significance of an archaeological resource, directly or indirectly destroy a unique paleontological resource or site or unique geologic feature, or disturb any human remains. No construction or demolition is proposed, all activities would occur above ground, waste collection activities would continue to occur at the same residential locations and streets with the same amount of residential waste collected, and the number of residential waste collectors in each franchise area would remain the same or fewer than the existing.

VI. GEOLOGY AND SOILS - Would the project:

- a) *Expose people or structures to potential substantial adverse effects, including the risk of loss, injury, or death involving:***

- i) *Rupture of a known earthquake fault, as delineated on the most recent Alquist-Priolo Earthquake Fault Zoning Map issued by the State Geologist for the area or based on other substantial evidence of a known fault? Refer to Division of Mines and Geology Special Publication 42.***

- ii) ***Strong seismic ground shaking?***
- iii) ***Seismic-related ground failure, including liquefaction?***
- iv) ***Landslides?***

No impact. The proposed project would not expose people or structures to potential significant adverse effects involving rupture of a known earthquake fault, strong seismic ground shaking, seismic-related ground failure, or landslides. No construction or demolition is proposed, all activities would take place above ground, waste collection activities would continue to occur at the same residential locations and streets with the same amount of residential waste collected, and the number of residential waste collectors in each franchise area would remain the same or fewer than the existing.

- b) ***Result in substantial soil erosion or the loss of topsoil?***

No impact. The proposed project would not result in substantial soil erosion or loss of topsoil. No construction or demolition is proposed, all activities would take place above ground, waste collection activities would continue to occur at the same residential locations and streets with the same amount of residential waste collected, and the number of residential waste collectors in each franchise area would remain the same or fewer than the existing.

- c) ***Be located on a geologic unit or soil that is unstable, or that would become unstable as a result of the project, and potentially result in on-or off-site landslide, lateral spreading, subsidence, liquefaction or collapse?***

No impact. The proposed project would not potentially result in on-or off-site landslide, lateral spreading, subsidence, liquefaction or collapse due to soil instability. No construction or demolition is proposed, all activities would occur above ground, waste collection activities would continue to take place at the same residential locations and streets with the same amount of residential waste collected, and the number of residential waste collectors in each franchise area would remain similar to the existing. Residential waste collection vehicles are among many heavy industrial vehicles that travel the streets daily.

- d) ***Be located on expansive soil, as defined in Table 18-1-B of the Uniform Building Code (1994), creating substantial risks to life or property?***

No impact. The proposed project would not create substantial risks to life or property due to expansive soil. No construction or demolition is proposed, all activities would occur above ground, waste collection activities would continue to take place at the same residential locations and streets with the same amount of residential waste collected, and the number of

residential waste collectors in each franchise area would remain the same or fewer than the existing. Residential waste collection vehicles are among many heavy industrial vehicles that travel the streets daily.

- e) ***Have soils incapable of adequately supporting the use of septic tanks or alternative waste water disposal systems where sewers are not available for the disposal of waste water?***

No impact. The proposed project would not generate waste water or involve the use of septic tanks or alternative waste water disposal systems.

VII. HAZARDS AND HAZARDOUS MATERIALS - Would the project:

- a) ***Create a significant hazard to the public or the environment through the routine transport, use, or disposal of hazardous materials?***

No impact. The proposed project would not involve the routine transport, use, or disposal of hazardous materials. The requirements of the franchise agreements would ensure that only residential waste that does not include observable hazardous materials would be routinely collected. The proposed franchise agreements obligate the franchise waste collectors to develop and implement a hazardous waste screening protocol to ensure that they collect and transport only waste that does not include observable hazardous materials, and to provide for proper disposal of any observed hazardous materials. Waste collection activities would continue to take place at the same residential locations and streets with the same amount of residential waste collected. The residential waste collected from the franchise areas would be transported to permitted solid waste management facilities in the region.

- b-c) ***Create a significant hazard to the public or the environment through reasonably foreseeable upset and accident conditions involving the release of hazardous materials into the environment or emit hazardous emissions or handle hazardous materials, substances or wastes within one quarter mile of an existing or proposed school?***

Less than significant impact. The proposed project would not create a significant hazard to the public or the environment through reasonably foreseeable upset and accident conditions involving the release of hazardous materials into the environment or emit hazardous emissions or handle hazardous materials, substances or wastes within one-quarter mile of an existing or proposed school. Waste collection activities would continue to take place at the same residential locations and streets with the same amount of residential waste collected. As discussed in Section VII.a above, the proposed franchise agreements prohibit the routine collection and transporting of hazardous materials and require the franchise waste

collectors to provide for the safe disposition of any hazardous waste observed in the performance of their collection activities. The proposed franchise agreements further require that franchise waste collectors secure pollution endorsements to automobile liability insurance policies that cover costs of cleaning up hazardous material spills.

- d) ***Be located on a site which is included on a list of hazardous materials sites compiled pursuant to Government Code, Section 65962.5 and, as a result, would it create a significant hazard to the public or the environment?***

No impact. The proposed project would not take place on a site, which is known to be included on a list of hazardous materials sites compiled pursuant to Government Code, Section 65962.5. Residential waste collection activities would continue to occur in streets and at the same residential locations.

- e) ***For a project located within an airport land use plan or, where such a plan has not been adopted, within two miles of a public airport or public use airport, would the project result in a safety hazard for people residing or working in the project area?***

No impact. The proposed project would not result in a safety hazard for people residing in the project area even though portions of the franchise areas are within the planning boundaries of the adopted Los Angeles County Airport Land Use Plan. Waste collection activities would continue to take place at the same residential locations and streets with the same amount of residential waste collected.

- f) ***For a project within the vicinity of a private airstrip, would the project result in a safety hazard for people residing or working in the project area?***

No impact. The proposed project would not result in a safety hazard for people residing or working in the project area, since the franchise areas are not within the vicinity of any known private airstrips, and waste collection activities would continue to take place at the same residential locations and streets with the same amount of residential waste collected.

- g) ***Impair implementation of or physically interfere with an adopted emergency response plan or emergency evacuation plan?***

No impact. The proposed project would not impair implementation of or physically interfere with an adopted emergency response plan or emergency evacuation plan. Waste collection activities would continue to take place at the same residential locations and streets with the same amount of residential waste collected, and the number of residential waste collectors in

each franchise area would remain the same or fewer than the existing. Waste collection vehicles are among many heavy industrial vehicles that travel the streets each day, and they do not affect use of the streets or access to residences by emergency response personnel.

In addition, the proposed franchise agreements obligate the franchise waste collectors to provide the County with maps of their collection routes and schedules, and the County would have the right to request changes to accommodate emergency evacuation plans or routes. Further, the proposed franchise agreements obligate the franchise waste collectors to make specified efforts to assist the County in the event of major disasters.

- h) Expose people or structures to a significant risk of loss, injury, or death involving wildland fires, including where wildlands are adjacent to urbanized areas or where residences are intermixed with wildlands?***

No impact. The proposed project would not expose people or structures to a significant risk of loss, injury, or death involving wildland fires. Most of the franchise areas are densely developed urban areas. No construction or change in use is proposed, waste collection activities would continue to occur at the same residential locations and streets with the same amount of residential waste collected, and the number of residential waste collectors in each franchise area would remain the same or fewer than the existing.

VIII. HYDROLOGY AND WATER QUALITY - Would the project:

- a) Violate any water quality standards or waste discharge requirements?***

Less than significant impact. The proposed project would not violate any water quality standards or waste discharge requirements. Waste collection activities would continue to take place at the same residential locations and streets, where runoff is designed to flow to the County's storm drain system, with the same amount of residential waste collected. Collection of residential solid waste would be fully automated and placed in carts with stable bases and attached tight fitting lids with wheels that reduce animal scavenging, litter, and spill. In addition, the proposed franchise agreements require the franchise waste collectors to prevent solid waste from escaping from collection vehicles during collection and transportation, and to immediately clean up all litter, spills, and leaks.

- b) Substantially deplete groundwater supplies or interfere substantially with groundwater recharge such that there would be a net deficit in aquifer volume or a lowering of the local groundwater table level (e.g., the production rate of pre-existing nearby wells would drop to a level which would not support existing land uses or planned uses for which permits have been granted)?***

No impact. The proposed project would not substantially deplete groundwater supplies or interfere substantially with groundwater recharge such that there would be a net deficit in aquifer volume or a lowering of the local groundwater table level, since the project would not involve the use of any substantial amounts of water.

- c) ***Substantially alter the existing drainage pattern of the site or area, including through the alteration of the course of a stream or river, in a manner which would result in substantial erosion or siltation on- or off-site?***

No impact. The proposed project would not result in substantial erosion or siltation on- or off-site since the project would not include activities that could change existing drainage patterns in the franchise areas, transport route areas or surrounding areas.

- d) ***Substantially alter the existing drainage pattern of the site or area, including through the alteration of the course of a stream or river, or substantially increase the rate or amount of surface runoff in a manner which would result in flooding on- or off-site?***

No impact. The proposed project would not result in flooding on- or off-site since the project would not include activities that could change existing drainage patterns or increase the rate or amount of surface runoff in the franchise areas, transport route areas or surrounding areas.

- e) ***Create or contribute runoff water which would exceed the capacity of existing or planned stormwater drainage systems or provide substantial additional sources of polluted runoff?***

Less than significant impact. The proposed project would not create or contribute runoff water, which would exceed the capacity of existing or planned stormwater drainage systems, or provide substantial additional sources of polluted runoff since residential solid waste would be contained in collection vehicles. Waste collection activities would continue to take place at the same residential locations and streets, with the same amount of residential waste collected. Collection of residential solid waste would be fully automated and placed in carts with stable bases and attached tight fitting lids with wheels that reduce animal scavenging, litter, and spill. In addition, the proposed franchise agreements require the franchise waste collectors to prevent solid waste from escaping from collection vehicles during collection and transportation, and to immediately clean up all litter, spills, and leaks.

- f) ***Otherwise substantially degrade water quality?***

No impact. The proposed project would not otherwise substantially degrade water quality since residential solid waste would be contained in collection vehicles. As described in Sections VIII.a and e above, the proposed franchise agreements require the franchise waste collectors to prevent solid waste from escaping from collection vehicles during collection and transportation, and to immediately clean up any solid waste that spills or leaks onto any street. Waste collection activities would continue to take place at the same residential locations and streets, with the same amount of residential waste collected.

- g) *Place housing within a 100-year flood hazard area as mapped on a Federal Flood Hazard Boundary or Flood Insurance Rate Map or other flood hazard delineation map?***

No impact. The proposed project does not involve any construction or placement of any housing.

- h) *Place within a 100-year flood hazard area structures which would impede or redirect flood flows?***

No impact. The proposed project does not involve any construction or the placement of any structures that would impede or redirect flood flows.

- i) *Expose people or structures to a significant risk of loss, injury or death involving flooding, including flooding as a result of the failure of a levee or dam?***

No impact. The proposed project would not include activities that could expose people or structures to a significant risk of loss, injury, or death involving flooding.

- j) *Inundation by seiche, tsunami, or mudflow?***

No impact. The proposed project would not include activities that could expose people or structures to inundation by seiche, tsunami, or mudflow.

IX. LAND USE AND PLANNING - Would the project:

- a) *Physically divide an established community?***

No impact. The proposed project would not physically divide an established community. No construction is proposed, waste collection activities would continue to take place at the same residential locations and streets with the same amount of residential waste collected, and the number of residential waste collectors in each franchise area would remain the same or fewer than the existing.

- b) *Conflict with any applicable land use plan, policy, or regulation of an agency with jurisdiction over the project (including, but not limited to the general plan, specific plan, local coastal program, or zoning ordinance) adopted for the purpose of avoiding or mitigating an environmental effect?***

No impact. The proposed project would not conflict with any applicable land use plan, policy, or regulation adopted for the purpose of avoiding or mitigating an environmental effect. No construction or change in use is proposed, waste collection activities would continue to take place at the same residential locations and streets with the same amount of residential waste collected, and the number of residential waste collectors in each franchise area would remain the same or fewer than the existing.

- c) *Conflict with any applicable habitat conservation plan or natural community conservation plan?***

No impact. The proposed project would not conflict with any applicable habitat conservation plan or natural community conservation plan. No construction or change in use is proposed, waste collection activities would continue to take place at the same residential locations and streets with the same amount of residential waste collected, and the number of residential waste collectors in each franchise area would remain the same or fewer than the existing.

X. MINERAL RESOURCES - Would the project:

- a) *Result in the loss of availability of a known mineral resource that would be of value to the region and the residents of the state?***

No impact. The proposed project would not use any known mineral resource that would be of value to the region or the residents of the state.

- b) *Result in the loss of availability of a locally-important mineral resource recovery site delineated on a local general plan, specific plan or other land use plan?***

No impact. The proposed project would not take place on a locally important mineral resource recovery site delineated on a local general plan, specific plan, or other land use plan.

XI. NOISE - Would the project result in:

- a) *Exposure of persons to or generation of noise levels in excess of standards established in the local general plan or noise ordinance, or applicable standards of other agencies?***

Less than significant impact. The proposed project would not expose persons to or generate noise levels in excess of standards established in the County general plan, the County noise ordinance, or applicable standards of other agencies. No construction or change in use is proposed, waste collection activities would continue to take place at the same residential locations and streets with the same amount of residential waste collected, and the number of residential waste collectors in each franchise area would remain the same or fewer than the existing. Therefore, since the same amount of residential waste would be collected at the same locations, the noise level at each pickup location would not increase.

Residential waste collection would only occur between 6 a.m. and 6 p.m. Monday through Saturday, and the amount of activity at any one location would be very limited in duration. In addition, the proposed franchise agreements require all collection services to be fully automated, whereas some of the current residential waste collectors use manual collection vehicles. This requirement is anticipated to further reduce the duration of existing noise levels due to the elimination of the longer truck idling periods used in manual collection. Although automated collection is from one side of the street at a time, while manual collection can occur from both sides of the street in a single trip (which sometimes requires the truck to zigzag across the street), automated collection trucks move more quickly down residential streets, which would result in a net reduction in the duration of these already temporary noise events. Therefore, noise levels in the project areas either would remain the same or be reduced compared to current waste collection activities.

b) *Exposure of persons to or generation of excessive ground borne vibration or ground borne noise levels?*

Less than significant impact. The proposed project would not expose persons to or generate excessive ground borne vibration or ground borne noise levels. No construction or change in use is proposed, waste collection activities would continue to take place at the same residential locations and streets with the same amount of residential waste collected, and the number of residential waste collectors in each franchise area would remain similar to the existing. Both existing and proposed waste collection vehicles produce temporary ground borne vibration and noise levels, but these levels are not significant.

c-d) *A substantial permanent increase in ambient noise levels in the project vicinity above levels existing without the project or a substantial temporary or periodic increase in ambient noise levels in the project vicinity above levels existing without the project?*

No impact. The proposed project would not result in a substantial permanent increase in ambient noise levels in the project vicinity above levels existing without the project or a substantial temporary or periodic increase in ambient noise levels in the project vicinity above levels existing without the project. As described in Section XI.a above, ambient noise levels in the project areas would either remain the same or be reduced compared to current waste collection activities.

- e-f) *For a project located within an airport land use plan or, where such a plan has not been adopted, within two miles of a public airport or public use airport, would the project expose people residing or working in the project area to excessive noise levels or for a project within the vicinity of a private airstrip, would the project expose people residing or working in the project area to excessive noise levels?***

No impact. Although portions of some of the franchise areas are within the planning boundaries of the adopted Los Angeles County Airport Land Use Plan or within two miles of a public airport or public use airport, the proposed project would not expose people residing or working in the project area to excessive noise levels. No construction or change in use is proposed, waste collection activities would continue to take place at the same residential locations and streets with the same amount of residential waste collected, and the number of residential waste collectors in each franchise area would remain the same or fewer than the existing.

XII. POPULATION AND HOUSING - Would the project:

- a) *Induce substantial population growth in an area, either directly (for example, by proposing new homes and businesses) or indirectly (for example, through extension of roads or other infrastructure)?***

No impact. The proposed project would not induce substantial population growth, either directly or indirectly. No construction or change in use is proposed.

- b-c) *Displace substantial numbers of existing housing, necessitating the construction of replacement housing elsewhere, or displace substantial numbers of people, necessitating the construction of replacement housing elsewhere?***

No impact. The proposed project would not displace existing housing or people. No construction, demolition, or change in use is proposed.

XIII. PUBLIC SERVICE - Would the project:

- a) *Would the project result in substantial adverse physical impacts associated with the provision of new or physically altered governmental***

facilities, need for new or physically altered governmental facilities, the construction of which could cause significant environmental impacts, in order to maintain acceptable service ratios, response times or other performance objectives for any of the public services: Fire protection, police protection, schools, parks, other public facilities?

No impact. The proposed project would not result in the provision of or need for any new or physically altered fire protection, police protection, school, park, or other public facilities. No construction or change in use is proposed, and waste collection activities would continue to take place at the same residential locations and streets, with the same amount of residential waste collected, and the number of residential waste collectors in each franchise area would remain the same or fewer than the existing.

XIV. RECREATION - Would the project:

- a) ***Would the project increase the use of existing neighborhood and regional parks or other recreational facilities such that substantial physical deterioration of the facility would occur or be accelerated?***

No impact. The proposed project would not increase the use of existing parks or other recreational facilities. Waste collection activities would continue to take place only at residential locations and streets.

- b) ***Does the project include recreational facilities or require the construction or expansion of recreational facilities which might have an adverse physical effect on the environment?***

No impact. The proposed project does not include recreational facilities or require the construction or expansion of any recreational facilities.

XV. TRANSPORTATION/TRAFFIC - Would the project:

- a) ***Cause an increase in traffic which is substantial in relation to the existing traffic load and capacity of the street system (i.e., result in a substantial increase in either the number of vehicle trips, the volume to capacity ratio on roads, or congestion at intersections)?***

No impact. The proposed project would not result in a substantial increase in either the number of vehicle trips, the volume to capacity ratio on roads, or congestion at intersections. Waste collection activities would continue to take place at the same residential locations and streets with the same amount of residential waste collected, and the number of residential waste collectors in each franchise area would remain the same or fewer than the existing.

The proposed franchise agreements require all collection services to be fully automated, whereas some of the current residential waste collectors use manual collection vehicles. Automated collection trucks move more quickly down residential streets, resulting in fewer delays for other vehicles attempting to move behind slow moving manual waste collection trucks.

- b) *Exceed, either individually or cumulatively, a level of service standard established by the County Congestion Management Agency for designated roads or highways?***

No impact. The proposed project would not exceed, either individually or cumulatively, a level of service standard established by the County Congestion Management Agency for designated roads or highways. The County's Congestion Management Program (CMP) applies to projects that have the potential to generate a minimum of 50 vehicle trips through a CMP intersection. The proposed project does not have the potential to generate 50 or more trips through a CMP intersection.

- c) *Result in a change in air traffic patterns, including either an increase in traffic levels or a change in location that results in substantial safety risks?***

No impact. The proposed project would not result in a change in air traffic patterns.

- d) *Substantially increase hazards due to a design feature (e.g., sharp curves or dangerous intersections) or incompatible uses (e.g., farm equipment)?***

No impact. The proposed project would not substantially increase hazards due to a design feature or incompatible uses since it would not add any design features or incompatible uses. Waste collection activities would continue to take place at the same residential locations and streets with the same amount of residential waste collected, and the number of residential waste collectors in each franchise area would remain the same or fewer than the existing.

- e) *Result in inadequate emergency access?***

No impact. The proposed project would not result in inadequate emergency access since no changes in emergency access would occur as a result of the project. Waste collection activities would continue to take place at the same residential locations and streets with the same amount of residential waste collected, and the number of residential waste collectors in each franchise area would remain the same or fewer than the existing. Waste collection vehicles are among many heavy industrial vehicles that travel the streets

each day, and they do not affect use of the streets or access to residences by emergency response personnel.

In addition, the proposed franchise agreements obligate the franchise waste collectors to provide the County with maps of their collection routes and schedules, and the County would have the right to request changes to accommodate emergency access. Further, the proposed franchise agreements obligate the franchise waste collectors to make specified efforts to assist the County in the event of major disasters.

f) *Result in inadequate parking capacity?*

No impact. The proposed project would not result in inadequate parking capacity. The project would not result in any increase in the need for parking or any changes to existing parking. Waste collection activities would continue to take place at the same residential locations and streets with the same amount of residential waste collected, and the number of residential waste collectors in each franchise area would remain the same or fewer than the existing.

g) *Conflict with adopted policies, plans, or programs supporting alternative transportation (e.g., bus turnouts, bicycle racks)?*

No impact. The proposed project would not conflict with adopted policies, plans, or programs supporting alternative transportation.

XVI. UTILITIES AND SERVICE SYSTEMS - Would the project:

a) *Exceed wastewater treatment requirements of the applicable Regional Water Quality Control Board?*

No impact. The proposed project would not exceed wastewater treatment requirements of the applicable Regional Water Quality Control Board since the project would not result in contamination of or increase in discharge of wastewater. No construction is proposed, and only incidental amounts of wastewater would be generated by the project. Waste collection activities would continue to take place at the same residential locations and streets, with the same amount of residential waste collected, and the number of residential waste collectors in each area would remain the same or fewer than the existing

b) *Require or result in the construction of new water or wastewater treatment facilities or expansion of existing facilities, the construction of which could cause significant environmental effects?*

No impact. The proposed project would not require or result in the construction of new water or wastewater treatment facilities or expansion of existing facilities since the project would not result in any significant increase in water usage or discharge of wastewater.

- c) ***Require or result in the construction of new storm water drainage facilities or expansion of existing facilities, the construction of which could cause significant environmental effects?***

No impact. The proposed project would not result in the construction of new stormwater drainage facilities or expansion of existing facilities. The proposed project would not create or contribute runoff water that would exceed the capacity of existing or planned stormwater drainage systems or provide substantial additional sources of polluted runoff, since residential solid waste would be contained in collection vehicles. Waste collection activities would continue to take place at the same residential locations and streets, with the same amount of residential waste collected. The proposed franchise agreements require the franchise waste collectors to prevent solid waste from escaping from collection vehicles during collection and transportation, and to immediately clean up all litter, spills, and leaks.

- d) ***Have sufficient water supplies available to serve the project from existing entitlements and resources, or are new or expanded entitlements needed?***

No impact. Sufficient water supplies are available to serve the proposed project since the project would not involve the use of substantial amounts of water.

- e) ***Result in a determination by the wastewater treatment provider which serves or may serve the project that it has adequate capacity to serve the project's projected demand in addition to the provider's existing commitments?***

No impact. The proposed project would generate only incidental amounts of wastewater.

- f-g) ***Be served by a landfill with sufficient permitted capacity to accommodate the project's solid waste disposal needs and comply with Federal, State, and local statutes and regulations related to solid waste?***

No impact. The proposed project would be served by landfills with sufficient permitted capacity to accommodate the project and would comply with Federal, State, and Local statutes and regulations related to solid waste. The proposed franchise agreements require compliance with all applicable

laws and regulations and require the franchise waste collectors to provide documentation of the solid waste facilities to be used. In addition, a goal of the proposed project is to promote less disposal and more recycling of solid waste.

XVII. MANDATORY FINDINGS OF SIGNIFICANCE -

- a) ***Does the project have the potential to degrade the quality of the environment, substantially reduce the habitat of a fish or wildlife species, cause a fish or wildlife population to drop below self-sustaining levels, threaten to eliminate a plant or animal community, reduce the number or restrict the range of a rare or endangered plant or animal or eliminate important examples of the major periods of California history or prehistory?***

No impact. For the reasons described in the above discussion of environmental factors, the proposed project does not have the potential to degrade the quality of the environment, substantially reduce the habitat of a fish and wildlife species, cause a fish or wildlife population to drop below self-sustaining levels, threaten to eliminate a plant or animal community, reduce the number or restrict the range of a rare or endangered plant or animal, or eliminate important examples of the major periods of California history or prehistory.

- b) ***Does the project have impacts that are individually limited, but cumulatively considerable? ("Cumulatively considerable" means that the incremental effects of a project are considerable when viewed in connection with the effects of past projects, the effects of other current projects, and the effects of probable future projects?)***

No impact. The proposed project would not have impacts that are individually limited but cumulatively considerable.

- c) ***Does the project have environmental effects which will cause substantial adverse effects on human beings, either directly or indirectly?***

No impact. The proposed project would not have environmental effects, which will cause substantial adverse effects on human beings, either directly or indirectly.