

YOU ARE PROTECTED!

**California Health and Safety Code,**  
Section 114432

Any food facility may donate food to a food bank or to any other nonprofit charitable organization for distribution to persons free of charge.

**California Health and Safety Code,**  
Section 114433

No food facility that donates food as permitted by Section 114432 shall be subject to civil or criminal liability or penalty for violation of any laws, regulations, or ordinances regulating the labeling or packaging of the donated product or, with respect to any laws, regulations, or ordinances, for a violation occurring after the time of donation.

**California Civil Code,** Section 1714.25(A)

Except for injury resulting from negligence or a willful act in the preparation or handling of donated food, no food facility that donates any food that is fit for human consumption at the time it was donated to a nonprofit charitable organization or a food bank shall be liable for any damage or injury resulting from the consumption of the donated food.

**United States Code, Bill Emerson Good Samaritan Food Donation Act, Title 42, Chapter 13A,** Section 1791 (C)(1)

A person or gleaner shall not be subject to civil or criminal liability arising from the nature, age, packaging or condition of apparently wholesome food or an apparently fit grocery product that the person or gleaner donates in good faith to a nonprofit organization for ultimate distribution to needy individuals.



CONTACT US



For more information or to schedule a free consultation for your business, call Los Angeles County Public Works at:

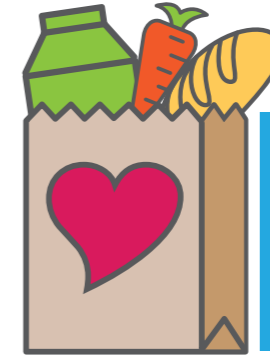
(888) CLEAN-LA (888) 253-2652

Monday - Thursday, 7:30 a.m. - 5:30 p.m.

email: [FoodDROPLA@pw.lacounty.gov](mailto:FoodDROPLA@pw.lacounty.gov)  
[FoodDROPLA.com](http://FoodDROPLA.com)

**ADDITIONAL RESOURCES:**

[Environmental Protection Agency \(EPA\) -  
Learn about their Food Recovery Challenge at  
epa.gov/sustainable-management-food/food-recovery-challenge-fr](https://www.epa.gov/sustainable-management-food/food-recovery-challenge-fr)  
[publichealth.lacounty.gov/eh/LACFRI](http://publichealth.lacounty.gov/eh/LACFRI)



LOS ANGELES COUNTY

**FOOD  
DROP**

Donation & Recovery Outreach Program





# OUR MISSION AND VISION

## OUR MISSION

We provide resources for businesses operating in County unincorporated areas to safely donate their excess edible food to fight hunger in Los Angeles County and divert food waste from the landfills.

## OUR VISION

To have all businesses operating in County unincorporated areas safely donate excess edible food to feed people in need in Los Angeles County.



1 in 7 living in LA County live with food insecurity.

## WHY DONATE?

### HELP FIGHT HUNGER

Each year, County unincorporated areas toss 128,000 tons of food into the trash. Public Works partnered with local charities in Los Angeles County to offer businesses a food donation option through Food DROP.

### TAX DEDUCTIBLE

All businesses who donate to a 501(c)(3) that uses the food for the care of the ill, the needy, or infants qualifies for an enhanced tax deduction. Contact a tax professional for additional guidance.

### ASSEMBLY BILL 1826

Under AB 1826, businesses that generate specified amounts of organic waste are required to arrange for organic waste recycling services or food donation.

### SENATE BILL 1383

SB 1383 requires a 50% reduction in organic waste disposal by 2020, and a 75% reduction by 2025. In addition, SB 1383 requires that not less than 20% of edible food that is disposed be recovered for human consumption by 2025.

Learn more about AB 1826 and SB 1383 by visiting [FoodDROPLA.com](http://FoodDROPLA.com)

# GETTING STARTED!

## Be a Business that CARES:

### 1. CHECK YOUR INVENTORY

Identify what food can be donated and get manager buy-in.

### 2. ARRANGE FOR A MEETING

If you are in an unincorporated area, Public Works will help you develop a food donation plan. To schedule a meeting, call (888) CLEAN-LA.

### 3. REACH OUT

Identify non-profit(s) that work with your plan and set-up a donation schedule.

### 4. ENGAGE YOUR STAFF

Educate your team about the program, what foods are suitable to donate and how to handle and store food for successful donation.

### 5. START DONATING!

Communicate regularly with the non-profit(s) and make adjustment as needed to ensure a successful donation partnership.



# HOW TO SAFELY DONATE



*Los Angeles County Department of Public Health supports safe food donation of surplus food.*

Follow Public Health's Guidelines for Safe Food Donation. Donated foods must:

- ✓ **BE AN APPROVED SOURCE OF DONATED FOODS**
- ✓ **REMAIN WITHIN TEMPERATURE CONTROL**
- ✓ **STAY PROTECTED FROM CONTAMINATION**

For guidance on donating Surplus Food, visit: [publichealth.lacounty.gov/eh/LACFRI](http://publichealth.lacounty.gov/eh/LACFRI) or call Public Health's Environmental Health Consultative Services at (626) 430-5320, from 8 a.m. - 5 p.m.

## TAX DEDUCTION

Food donation can be tax deductible. Contact a tax professional for additional guidance.

