

Disclaimer

All information presented is
in concept/draft form that
may be subject to change.



Proposed Exclusive Commercial Franchise Workshop

Commercial Franchise Section
December 16, 2020

Agenda

- Existing Commercial Franchise System
- Proposed Exclusive System Overview
- Purpose of the Transition
- Proposed Organics Generator Ordinance
- Proposed Exclusive Zones
- Proposed Contract Provisions
- Timeline
- Questions

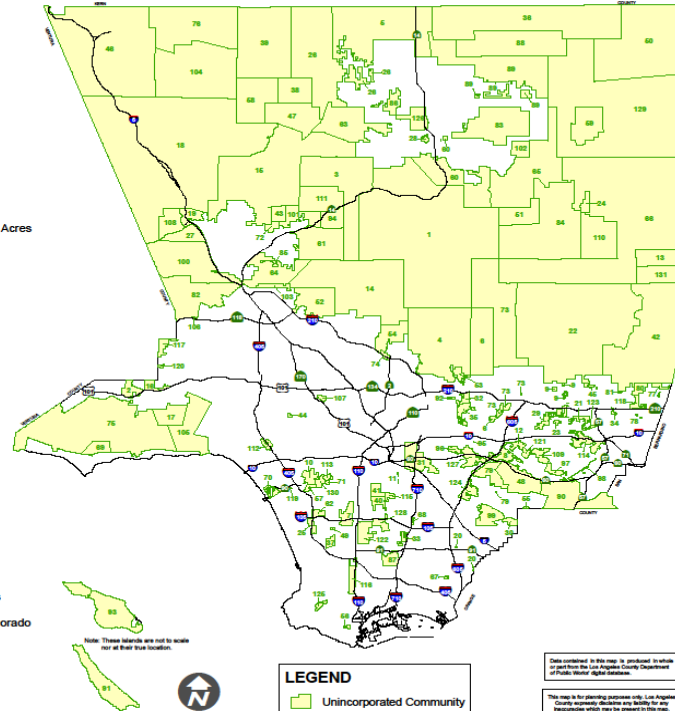
Existing Commercial Franchise System

- Waste Haulers have a Non-Exclusive Commercial Franchise Agreement with the County to be able to provide service
- Includes dumpster/bin and roll-off collection services for businesses, multifamily complexes and some single-family customers
- Serves approximately around 11,500 accounts
- Contains over 130+ unincorporated communities

LA Unincorporated Communities

LOS ANGELES COUNTY UNINCORPORATED COMMUNITY WASTESHEDS

- | | | |
|--------------------------|------------------------------|------------------------------------|
| 1 Acton | 47 Green Valley | 87 Rancho Dominguez |
| 2 Agoura | 48 Hacienda Heights | 88 Redman |
| 3 Agua Dulce | 49 Hawthorne Island | 89 Roosevelt |
| 4 Altadena | 50 Hi Vista | 90 Rowland Heights |
| 5 Antelope Acres | 51 Juniper Hills | 91 San Clemente Island |
| 6 Arcadia Island | 52 Kugel Canyon | 92 San Pasqual |
| 7 Athens | 53 Kinneola Mesa | 93 Santa Catalina Island |
| 8 Avocado Heights | 54 La Crescenta | 94 Soledad |
| 9 Azusa Islands | 55 La Habra Heights Island | 95 South El Monte Island |
| 10 Baldwin Hills | 56 La Rambla | 96 South San Gabriel |
| 11 Bandini Islands | 57 Ladera Heights | 97 South San Jose Hills |
| 12 Bassett | 58 Lake Hughes | 98 South Walnut |
| 13 Big Pines | 59 Lake Los Angeles | 99 South Whittier - Sunshine Acres |
| 14 Big Tujunga | 60 Lakeview | 100 Stevenson Ranch |
| 15 Bouquet Canyon | 61 Lang | 101 Sulphur Springs |
| 16 Calabasas (adjacent) | 62 Lennox | 102 Sun Village |
| 17 Calabasas Highlands | 63 Leona Valley | 103 Sylmar Island |
| 18 Castaic | 64 Little Tujunga | 104 Three Points |
| 19 Castaic Junction | 65 Littlerock | 105 Topanga Canyon |
| 20 Cerritos Islands | 66 Liano | 106 Twin Lakes |
| 21 Charter Oak | 67 Long Beach Island | 107 Universal City |
| 22 Citrus | 68 Lynwood Island | 108 Val Verde |
| 23 Covina Islands | 69 Malibu Vista | 109 Valinda |
| 24 Crystallaire | 70 Marina Del Rey | 110 Valyermo |
| 25 Del Aire | 71 Mesa Heights | 111 Vasquez Rocks |
| 26 Del Sur | 72 Mint Canyon | 112 Veterans Center |
| 27 Del Valle | 73 Monrovia/Duarte (Islands) | 113 View Park |
| 28 Desert View Highlands | 74 Montrose | 114 Walnut Islands |
| 29 East Inwindale | 75 Mulholland Corridor | 115 Walnut Park |
| 30 East La Mirada | | 116 West Carson |
| 31 East Los Angeles | | 117 West Chatsworth |
| Belvedere Gardens | | 118 West Claremont |
| City Terrace | | 119 West Fox Hills |
| Eastmont | | 120 West Hills Island |
| East Pasadena | | 121 West Puente Valley |
| East Rancho Dominguez | | 122 West Rancho Dominguez |
| East San Dimas | | 123 West San Dimas |
| East San Gabriel | | 124 West Whittier - Los Nietos |
| Edwards Air Force Base | | 125 Westfield |
| El Camino Village | | 126 White Fence Farms - El Dorado |
| Elizabeth Lake | | 127 Whittier Narrows |
| Fairmont | | 128 Willowbrook |
| Firestone | | 129 Wilsona Gardens |
| 41 Florence | | 130 Windsor Hills |
| 42 Foothill | | 131 Wrightwood |
| 43 Forrest Park | | |
| 44 Franklin Canyon | | |
| 45 Glendora Islands | | |
| 46 Gorman | | |



LEGEND

Unincorporated Community

Data contained in this map is provided in whole or in part by the Department of Public Works, Office of Planning & Development.

This map is for planning purposes only. Los Angeles County assumes no liability for any inaccuracies which may be present in this map.

Proposed Exclusive Commercial Franchise

- The County is proposing to transition to an Exclusive Franchise System by January 1, 2022

Affected Customers

- All unincorporated area customers that use dumpster/bin services, excluding the GDDs

Including:

- Commercial businesses with carts or dumpsters
- MF with any non-manure dumpsters
- MF 5+units with all carts
- SF with any non-manure dumpsters

Not Included in the Exclusive Franchise System

- MF 4- & SF Customers that only use cart services
- GDD customers
- Customers that self-haul their waste or manage their organic waste onsite, or utilize a micro-hauler for the collection of organic waste
- Customers that use C&D roll-off services (*Separate system*)
- Customers in the Agua Dulce and AV areas
- Properties within an incorporated city

Purpose of Transition

- Allows for waste haulers to have secured waste volumes
 - Enhances opportunity for organic waste infrastructure development
 - Southern California new organics infrastructure estimate ½-1 Billion
- Environmental Impacts
 - Fewer collection trucks servicing per zone
 - Less pollution and wear & tear on roads
- Assist with SB 1383 Compliance

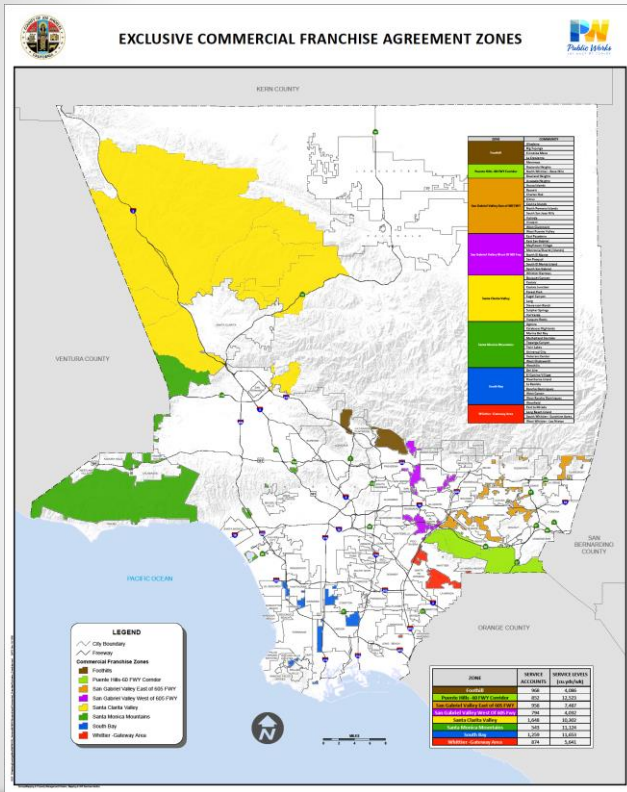
Organics Ordinance

- SB 1383 requires all generators to subscribe to organic services or self-manage
- The County is preparing an ordinance to enforce organic recycling requirements
 - Generators without proper services may be penalized
 - Penalties for non-compliance may be assessed by the County
- Haulers may assist with identifying non-compliant generators
- Container contamination is different than penalties
- Haulers will be expected to submit a contamination monitoring plan
 - Will cover this in more detail later

Other Compliance Options in the Ordinance

- Generators may also comply by:
 - Self-hauling or managing material on-site
 - Using a Micro-hauler; limited to
 - Organics only
 - Taking organics to a community site not a transfer station
 - Zero emission vehicles or bikes
 - Collection caps; limited to
 - 150 tons/year
 - 15% of customers within a zone
 - Transfer generators with 64+ gal of organics to the franchise hauler
 - Applying for a Waiver
 - Low Generation
 - Inadequate Space
 - Low Population (may only be applied for by the County)

Map of Proposed Zones

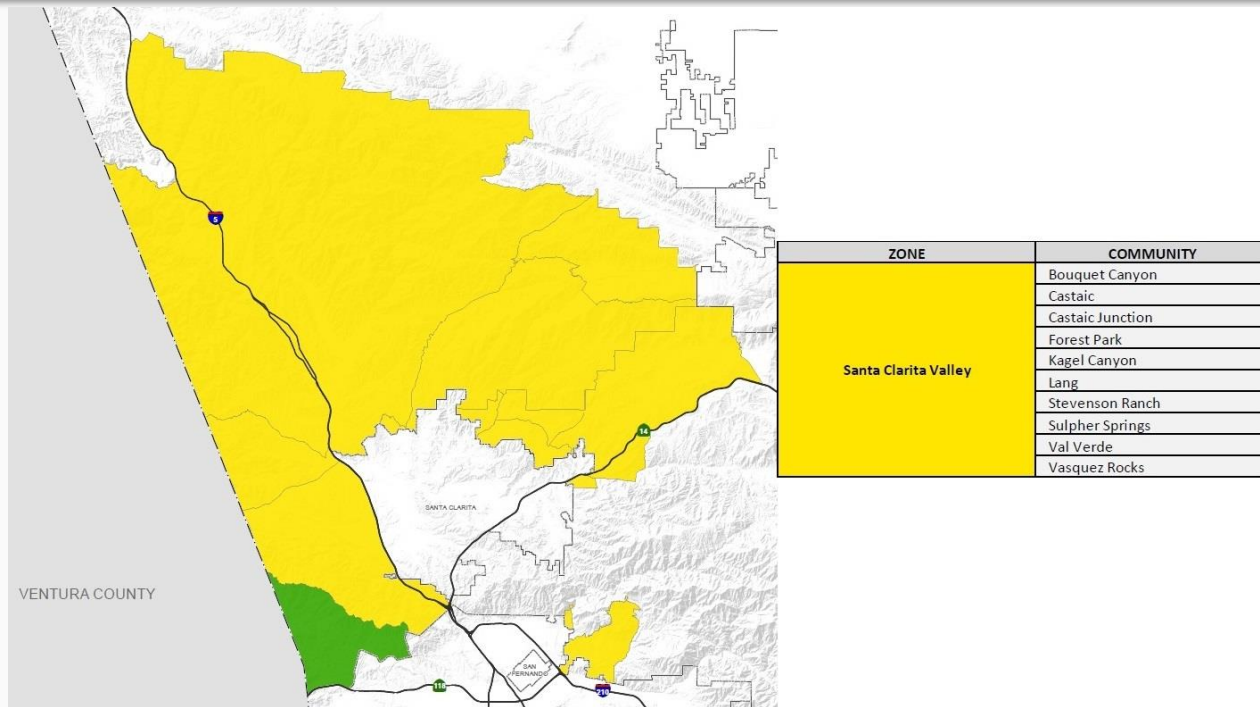


- Mapping customers and grouping by total customers and service levels
- Minimum 4,000 CY/wk
- Initial division shows a minimum of 8 exclusive zones

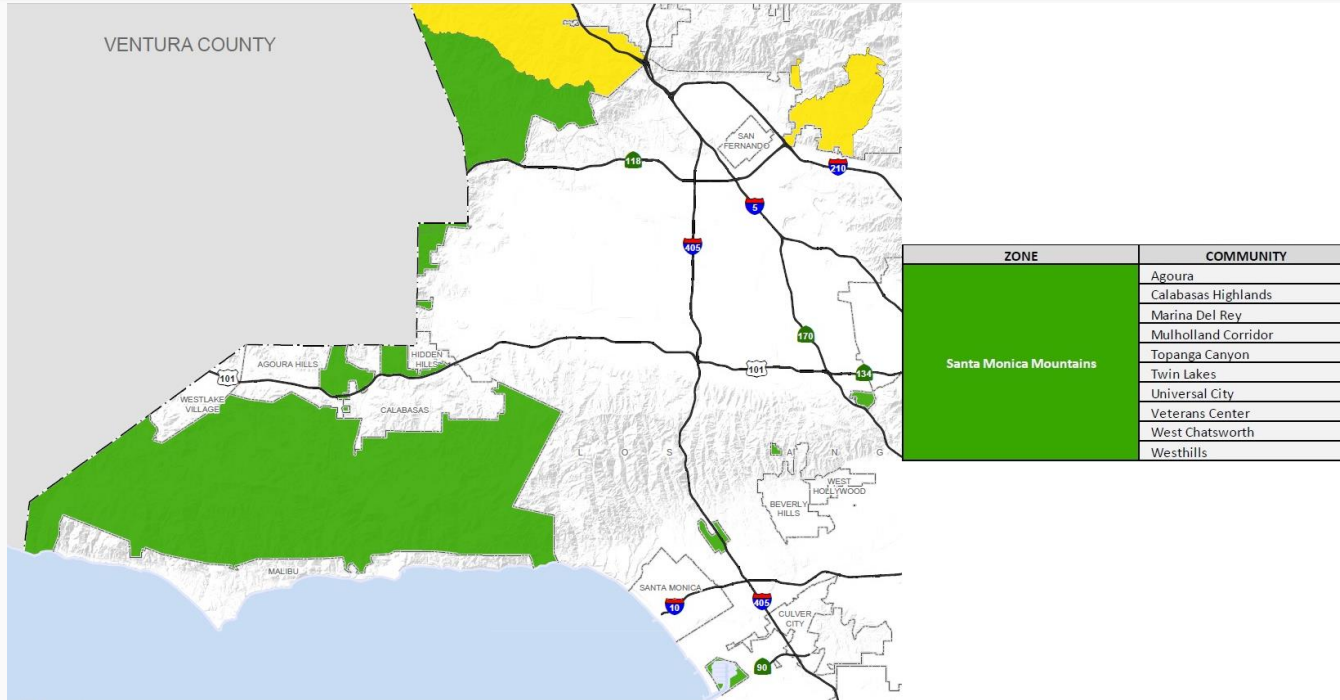
Map of Proposed Zones (Continued)

ZONE	SERVICE ACCOUNTS	SERVICE LEVELS (cu.yds/wk)
Foothill	968	4,086
Puente Hills -60 FWY Corridor	852	12,523
San Gabriel Valley East of 605 FWY	958	7,487
San Gabriel Valley West Of 605 Fwy	794	4,032
Santa Clarita Valley	1,648	10,302
Santa Monica Mountains	543	11,124
South Bay	1,259	11,653
Whittier -Gateway Area	874	5,641

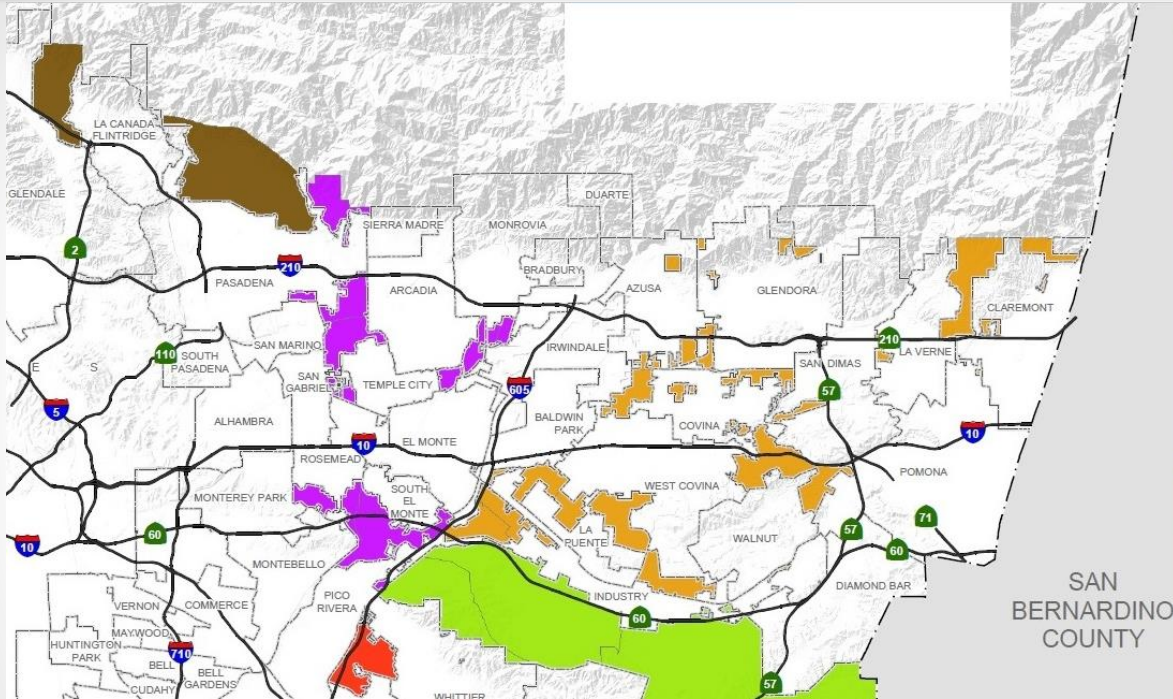
Map of Proposed Zones (Continued)



Map of Proposed Zones (Continued)

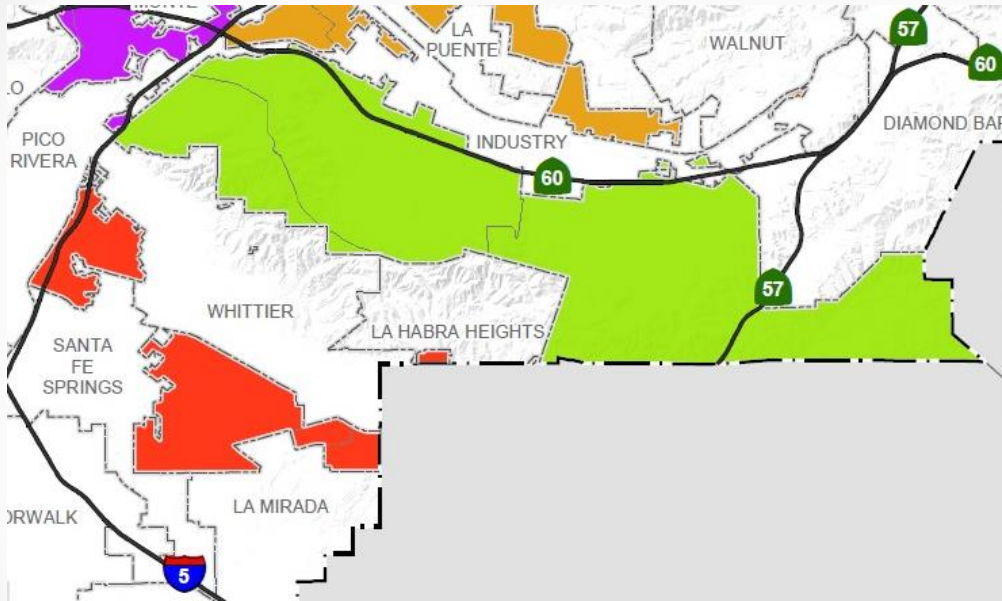


Map of Proposed Zones (Continued)



ZONE	COMMUNITY
Foothill	Altadena
	Big Tujunga
	Kinneloa Mesa
	La Crescenta
	Montrose
San Gabriel Valley East of 605 Fwy	Avocado Heights
	Azusa Islands
	Bassett
	Charter Oak
	Citrus
	Covina Islands
	North Pomona Islands
	South San Jose Hills
	Valinda
	Vincent
	West Claremont
	West Puente Valley
San Gabriel Valley West Of 605 Fwy	East Pasadena
	East San Gabriel
	Mayflower Village
	Monrovia/Duarte (Islands)
	North El Monte
	San Pasqual
	South El Monte Island
	South San Gabriel
	Whittier Narrows

Map of Proposed Zones (Continued)



ZONE	COMMUNITY
Puente Hills - 60 Fwy Corridor	Hacienda Heights
	North Whittier - Rose Hills
	Rowland Heights
Whittier - Gateway Area	East La Mirada
	Long Beach Island
	South Whittier - Sunshine Acres
	West Whittier - Los Nietos

Contract Provisions

- **Contract Term**
 - 10 years with (2) Five-year renewal options
- **Collection Service**
 - Mandatory collection of Trash, Recyclables and Organics to all customers
 - Allows for source separated collection and/or mixed waste processing (Must be compliant with SB 1383)

Contract Provisions (Continued)

- **Facilities**

- Waste hauler selects facilities (Subject to County approval)
- County reserves the right to implement flow control

- **Vehicles**

- 100% Clean fuel vehicles, except if servicing hard to service area

- **Customers Rates**

- Minimum base rate for the collection of trash, recyclables and organics
- Additional rates for additional services (e.g. Scout service, contamination, locks, and more)

Customer Rates

■ Commercial Rates Proposal Sample

- Will include:
 - Minimum base rate (trash, recyclables and organics)
 - Options for mixed waste processing
 - Rates for additional recycling and organics containers (for customers who need more beyond the minimum). Recycling would have to be half of the trash rates and organics less than trash rates.
 - Separate rate sheets for businesses and MF including SF

A. Business Trash Collection Rates (Minimum Base rate for trash, organics/food and recyclables includes the equivalent of 32 gallons of weekly organic/food waste and 96 gallons of weekly recycling collection service per Service Recipient, both at no additional charge.

Container Size	Collection Frequency					
	1X Week	2X Week	3X Week	4X Week	5X Week	6X Week
32 Gallon Cart						
64 Gallon Cart						
96 Gallon Cart						
1 CY Bin						
1.5 CY Bin						
2 CY Bin						
3 CY Bin						
4 CY Bin						
6 CY Bin						

SAMPLE ONLY

Additional Service Fees

Extra Services	Locks	Distance Access	Supplemental Cleaning
Scout Service	Gravity lock installation – per CONTAINER	Blocked Access – Requiring Return or Delay	Cart Cleaning (after one free cleaning/year)
Roll-Out Service Up to 10 ft- 5% of the Base Rate Total	Lock bar installation – per CONTAINER		CONTAINER Pressure Wash/Steam Cleaning (after one free cleaning/year)
Roll-Out Service Full Service Up to 50 ft- 50% of the Base Rate Total	Locks for CONTAINERS – per lock		COMPACTOR CONTAINER Pressure Washing/Steam Cleaning (after one free cleaning/year)
Roll-Out Service *Extended Full Service <ul style="list-style-type: none"> - First 50 ft -50% - Each 200 ft- 50% - Unpaved- 10% - Steep- 10% *% Of the Base Rate Total	Entering Secured Building, unlocking and locking gates	<div>SAMPLE ONLY</div>	

Additional Service Fees (Continued)

Container Replacement Repair	Other Fees	Violations	Billing Fees
Repair or Replacement of CONTRACTOR Owned CONTAINER(S) – CUSTOMER Error	Collection of Bulky Waste from COMMERCIAL ESTABLISHMENT not subject to Multifamily Bulky Item – Per Item	Contamination	Late payment fee (10% of past due)
	Additional Bulky Item picks ups for Multifamily and Single-family customers (After exceeding maximum collections allowed per yr.	Overloaded container	Interruption of service- \$25
	On-Call Pickups for Commercial Customers with Additional Charge		Returned Checks - \$25
	Idle Time Charge (if driver has to wait due to a CUSTOMER created delay in excess of 15 minutes)	SAMPLE ONLY	

Contract Provisions Cont'd

- **Contamination Monitoring**

- Annual route reviews for all customers
 - Additional route reviews for large organics customers
- Hauler submits proposal on methodology (Subject to County Approval)
 - Includes a customer notification procedure and may assess contamination fees

- **Education and Outreach**

- New service site visits and on-going site visits every other year
- Provide education materials for Property and Business Owners and Tenants
- Must distribute any outreach prepared by the County

Additional Contract Provisions

- **Special Services**

- One free container cleaning per year
- Graffiti removal within 7 business days
- Bulky item pickups and sharps collection for MF and SF
 - County is considering two options: Unlimited or Tiered approach (for large complexes)

- **Recordkeeping and Reporting**

- Will include additional reporting data needed for SB 1383 (e.g., contamination monitoring, list of commercial edible food generators, and more)

- **Additional Services**

- RNG procurement of organic waste
- SB 1383 Generator Waivers
- Commercial and MF compliance inspections
- SB 1383 Non-Compliance Complaints

Bulky Item Collection for MF & SF

- Hauler will provide separate rates (based on # of MF units) for:
 - Unlimited collection per yr.

SF and MF Complexes with No. of Units	Collection Amount Per Yr.	Flat Rate or % of Base Rate
Complex with 150+ units	Unlimited	SAMPLE ONLY
Complex with 101-149 units	Unlimited	
Complex with 50-100 units	Unlimited	
Complex with 25-49 units	Unlimited	
Complex with 1-24 units *1-unit accounts for a single-family customer	Unlimited	

- Maximum amount of collections per yr.

SF and MF Complexes with No. of Units	Maximum Collection Allowed Per Yr.	Flat Rate or % of Base Rate
Complex with 150+ units	Up to 50 per year	SAMPLE ONLY
Complex with 101-149 units	Up to 40 per year	
Complex with 50-100 units	Up to 30 per year	
Complex with 25-49 units	Up to 20 per year	
Complex with 1-24 units *1-unit accounts for a single-family customer	Up to 10 per year	

RNG Procurement

- The County may be requiring the Exclusive Commercial Franchise waste haulers to procure Renewable Natural Gas (RNG) for their collection vehicles
 - Procure approximately 25% of RNG from recovered organic Waste
 - Maintain records of the amount of RNG purchased and submit reports to the County.
 - Will be exempt from this requirement if hauler has more than 75% “fuel” usage served by electric trucks.

County's Role

- Administer new Franchise System and Programs
 - Enforcement
 - County to assist with:
 - Providing compliance letters
 - Site visits
 - Conduct continuous public education and outreach campaigns
 - Conduct field inspections relating to customer inquiries
 - Contract compliance review
 - Customer service standards
 - Contract requirements
 - Inspection and audits of records

Projected Timeline

Winter 2020

County to conduct hauler workshops

Early 2021

County to incorporate comments from workshop and finalize agreement

Spring/Summer 2021

Release Request For Proposals

Summer/Fall 2021

Request Board of Supervisors to Approve Exclusive Franchise Agreement and award contracts to haulers. Transition begins.

January 1, 2022

Full implementation of new Franchise System

*Tentative schedule, subject to change

Q & A



Contact Us

Contact Information:

Clark Ajwani

CAjwani@pw.lacounty.gov

(626) 458-5163

Grace Leriget

Gleriget@pw.lacounty.gov

(626) 458-3596