

# LA County Public Works: Sewer Maintenance Districts

## PROPOSED RATE INCREASE INSIGHTS

### Sewer Maintenance

Los Angeles County Public Works is dedicated to ensuring the efficient operation and upkeep of the region's sewer system. By continuously investing in technology and infrastructure, we aim to safeguard public health and the environment to keep our communities safe.

A properly maintained sewer system allows LA County residents to live, travel, work, and play without worrying about sewage overflows or pollution.



The system includes over **4,600 miles** of sewers — Nearly from Los Angeles to New York City and back!

## JULY | 2025

The rate adjustment will ensure longevity and effectiveness of the system and, if approved, would go into effect in **July 2025**.

### Proposed Rate Increase

To keep pace with rising inflation and continue funding essential operations and maintenance of the region's sewer system, Public Works is proposing a rate increase for its sewer maintenance services.

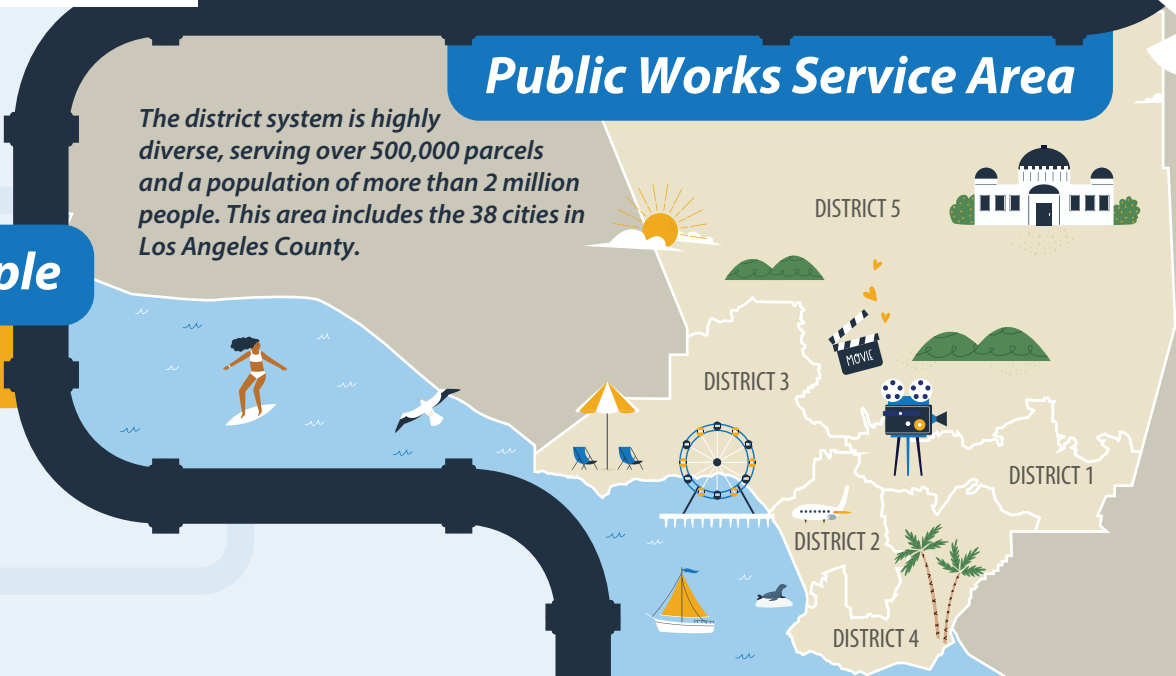
In 2024, Public Works conducted a rate study to determine potential new customer rates to cover the cost of system operations and maintenance for the coming years.

### Public Works Service Area

The district system is highly diverse, serving over 500,000 parcels and a population of more than 2 million people. This area includes the 38 cities in Los Angeles County.

2 million people

38 cities



## Proposition 218

Proposition 218 limits how local governments can raise money through fees, including those for services like sewer systems. It requires public agencies to mail a public notice to every property owner within their service areas when proposing a rate increase. If it doesn't pass, Public Works could struggle to fund services like sewer maintenance.

Under Proposition 218, local governments are required to follow certain procedures when proposing increased service charges. Proposed rate changes will be presented at a public hearing to the LA County Board of Supervisors to vote on adoption and you have the right to submit a letter of protest for each parcel you own within the Consolidated Sewer Maintenance District and Special Zones.



## Proposition 218 Highlights

Each impacted property owner will receive a notice that outlines:

Information on the new proposed rate

Proposition 218 protest instructions

Informational open house and webinar dates hosted by Public Works

Resources for residents to learn more about sewer services

The public hearing date to adopt or reject the rate increase



## Learn More

Want to learn more about Public Works' sewer maintenance services and the proposed rate increase?

Scan the QR code to access additional resources and get detailed information.



[pw.lacounty.gov/go/Prop218-SM](https://pw.lacounty.gov/go/Prop218-SM)