

ANTELOPE VALLEY IRWM PLAN

12th Stakeholder Meeting

May 2, 2007

MEETING OBJECTIVES

- ✓ Provide introduction to Proposition 50 Round 2 grant application process
- ✓ Discuss required elements of an IRWM Plan
- ✓ Prioritize projects and management actions for the plan
- ✓ Nominate potential projects and management actions for Prop 50 grant application

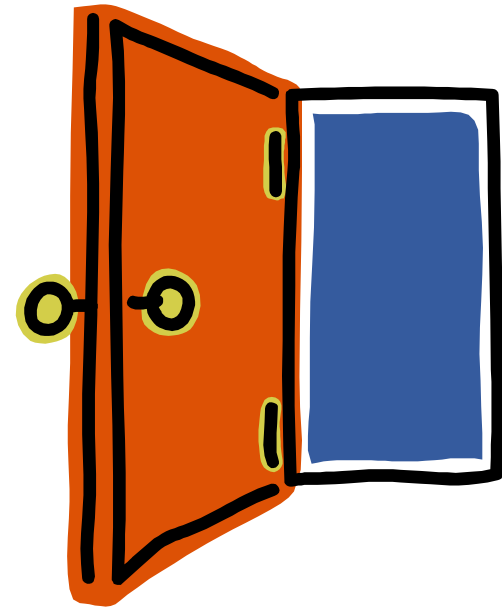
STEPS TO COLLABORATION

1. Adopt **SMART** goals for the process
2. Create a **safe** space for interaction
3. Establish a **clear** course of action
4. Demonstrate tangible **progress**
5. Iterate until group is satisfied



CODE OF CONDUCT

- ✓ **Be willing**
 - Participate fully
- ✓ **Be kind**
 - Treat others with dignity and respect
- ✓ **Be open**
 - Consider new ideas and perspectives
- ✓ **Be truthful**
 - Share accurate facts about my situation



CHECK IN

Are there questions from last meeting?



IRWMP Round 2 Implementation Grant Process Overview

- Available Funding for Round 2
- Draft Guidelines and Proposal Solicitation Package (PSP) Schedule
- 2-Step Implementation Grant Process
 - Step 1 – IRWM Plan and Budget Request
 - Step 2 – Callback for more detailed project analysis

Available Funding for Round 2

- Approximately \$64 million
- Northern California
 - Up to ~ \$21 million
 - 40% funding requirement already met
- Southern California
 - Up to ~ \$64 million
 - Minimum of ~ \$43 million to meet 40% requirement

Past Awards/Expenditures

	TOTAL	DWR	SWRCB
FUNDS AUTHORIZED	\$500,000,000	\$250,000,000	\$250,000,000
PROGRAM DELIVERY (5%)	\$25,000,000	\$12,500,000	\$12,500,000
BOND ISSUANCE COSTS (3.5%)	\$17,500,000	\$8,750,000	\$8,750,000
COMPREHENSIVE GW MONITORING	\$45,750,000	\$0	\$45,750,000
Total Available for Grants	\$411,750,000	\$228,750,000	\$183,000,000
AVAILABLE FOR ROUND 2 Grants	\$64,535,552	\$33,639,598	\$30,895,954

From DWR, 4/25/07

Past Awards/Expenditures: Northern California

	TOTAL	DWR	SWRCB
NORTHERN CALIFORNIA	\$235,989,304	\$136,907,632	\$99,081,672
Comprehensive GW Monitoring	\$22,875,000	\$0	\$22,875,000
Previous Grant Awards	\$31,114,304	\$29,907,632	\$1,206,672
ROUND 1 Implementation Awards	\$182,000,000	\$107,000,000	\$75,000,000

From DWR, 4/25/07

Past Awards/Expenditures: Southern California

	TOTAL	DWR	SWRCB
SOUTHERN CALIFORNIA	\$156,975,144	\$58,202,770	\$98,772,374
Comprehensive GW Monitoring	\$22,875,000	\$0	\$22,875,000
Previous Grant Awards	\$9,100,244	\$8,202,770	\$897,374
ROUND 1 Implementation Awards	\$125,000,00	\$50,000,000	\$75,000,000

From DWR, 4/25/07

Schedule

- April 18 Draft Guidelines and PSP released
- April 25 Informational Workshop
- May 21 Public meeting - Sacramento
- May 23 Public Meeting – Riverside
- **May 24** **Comments due by 5 p.m.**
- *Mid-June* Approve Final Guidelines/PSP
- *Mid-July* Applicant Workshops
- *August 1* Step 1 Applications Due

From DWR, 4/25/07

Step 1 Application per PSP

- Step 1 simplified
 - Quality of the Plan → and projects and how projects meet regional objectives
- Moved from Step 1 to Step 2
 - Project Information
 - Eligibility Information
 - Request to waive funding match
- Step 1 requires grant request, local match, and total project budget

Step 1 – IRWM Plan Scoring

- Adopted Plan scoring simplified
- Preference for adopted plans
 - Adopted = 5 points
 - Not Adopted = 1 point
- Disadvantaged Communities – EJ Concerns
 - Involvement of DACs in Plan
 - Address water-related EJ concerns in Plan
 - EJ now a program preference
 - Definition of EJ provided in Appendix D

Step 1 - Appendix A IRWM Plan Standards

- Plan Adoption Date – Minimum Standards
 - Before submittal of the Step 2 application
- Limit Use of Draft Plans
 - Publicly noticed review & comment period
 - Completed by submittal of Step 1 application
- Eliminated eligibility of Functionally Equivalent Plans
- Added footnote
 - Prop 84 Water Management Strategies

From DWR, 4/25/07

Step 1 Proposal Selection for Step 2 Call backs

- Added discussion of Call Back
 - 1.5 - 2 times the amount of funding requests to available funding by North/South
- Funding Match Date Changed
 - March 20, 2007

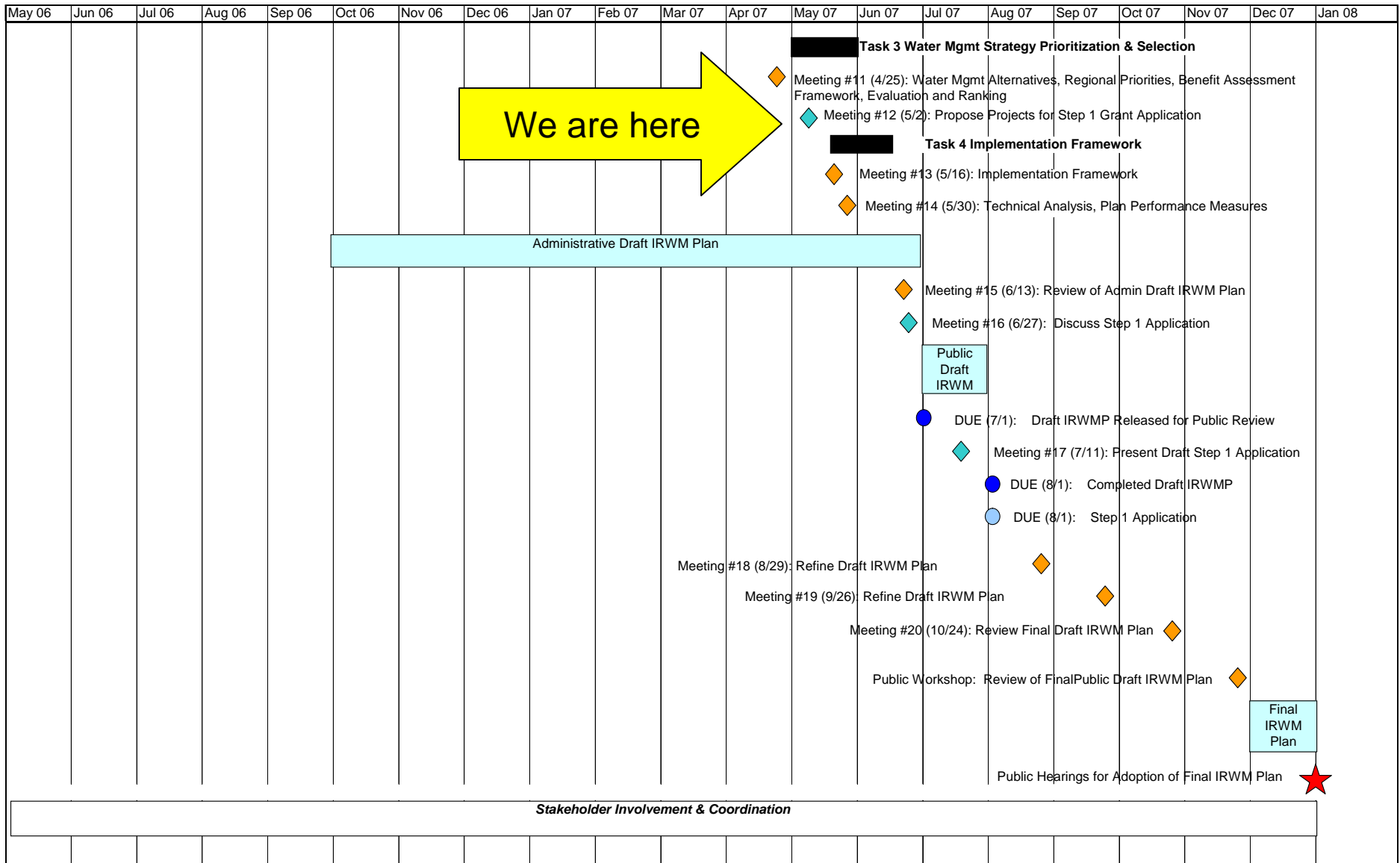
Revisions: Appendix C

Step 2 PSP

- Step 2 simplified
 - Quality of the projects
 - Eliminated reevaluation of the plan
- Economic Analysis
 - Dollar Value Base Year now 2006
- Exhibit 6 Waiver of Funding Match
 - Previously in Step 1
 - Detailed Census Guidance deleted
 - Funding Match examples deleted

Questions?

NEW SCHEDULE



ACCELERATED SCHEDULE

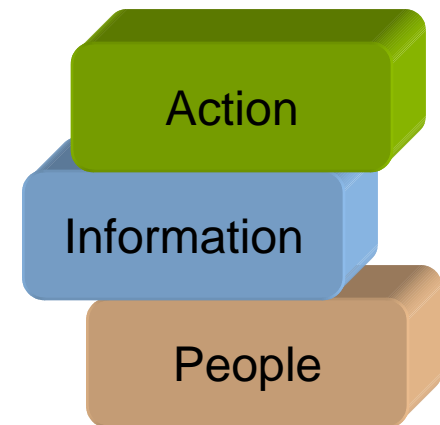
AVIRWMP Meeting	Date	Time**	Location	Purpose
11	4/25/07	9am-2:30pm	Larry Chimbole Cultural Center , 38350 Sierra Highway, Palmdale <i>(room reserved from 9-3pm)</i>	Water Mgmt Alternatives, Regional Priorities, Evaluation and Ranking
12	5/2/07*	9am-2:30pm	PWD Board Room , 2029 East Avenue Q, Palmdale <i>(room reserved from 9-2:30pm)</i>	Prop 50 Step 1 Grant Application “Kick-off”
13	5/16/07*	9:30 am- 2:30pm	LA County Lancaster Public Library , 601 W. Lancaster Blvd., Lancaster <i>(room reserved from 9-4:30)</i>	Implementation Framework
14	5/30/07	9am-2:30pm	Larry Chimbole Cultural Center , 38350 Sierra Highway, Palmdale	Technical Analysis, Plan Performance Measures
15	6/13/07*	9am-2:30pm	Larry Chimbole Cultural Center , 38350 Sierra Highway, Palmdale	Review Admin Draft IRWM Plan
16	6/27/07	9am-2:30pm	Larry Chimbole Cultural Center , 38350 Sierra Highway, Palmdale	Discuss Prop 50 Step 1 Application
17	7/11/07	9am-1:30pm	City of Lancaster City Hall, EOC Room , 44933 N. Fern Avenue, Lancaster <i>(room reserved from 9am-1:30pm)</i>	Present Draft Prop 50 Step 1 Application
18	8/29/07	9am-2:30pm	Larry Chimbole Cultural Center , 38350 Sierra Highway, Palmdale	Refine Draft IRWM Plan
19	9/26/07	9am-2:30pm	Larry Chimbole Cultural Center , 38350 Sierra Highway, Palmdale	Refine Draft IRWM Plan
20	10/24/07	9am-2:30pm	Larry Chimbole Cultural Center , 38350 Sierra Highway, Palmdale	Review Final Draft IRWM Plan

* New Meeting Date/Time

**Note that these meeting times may be reduced depending on our progress.

PLANNING APPROACH

- ✓ Want to create an IRWMP that accomplishes specific goals
- ✓ Recognize this is a human process
- ✓ Gather and present useful information
- ✓ Promote meaningful action



PLAN COMPONENTS

- ✓ Identify Issues and Needs within Regional Context
- ✓ Establish Planning Objectives
- ✓ Identify Potential Solutions (Water Management Strategies)
- ✓ Prioritize Actions
- ✓ Establish Structure for Implementation
- ✓ Identify Finance Plan
- ✓ Track Performance

PLAN OBJECTIVES

Objective	Planning Target
Water Supply Management	
Provide reliable water supply to meet the Region's expected demand between now (2010) and 2035.	Reduce (8,700 to 120,800 AF) mismatch of expected supply and demand in average years by providing new water supply and reducing demand, starting 2009.
	Provide adequate reserves (103,000 to 117,000 AF) to supplement average condition supply to meet demands during single-dry year conditions, starting 2009.
	Provide adequate reserves (226,200 to 285,000 AF) to supplement average condition supply to meet demands during multi-dry year conditions, starting 2009.
Establish a contingency plan to meet water supply needs of the region during a plausible disruption of SWP water deliveries.	Demonstrate ability to meet regional water demands without receiving SWP water for 6 months over the summer, by June 2010.
Stabilize groundwater levels at current conditions.	Manage groundwater levels throughout the basin such that a 10 year moving average of change in observed groundwater levels is greater than or equal to 0, starting January 2010.

PLAN OBJECTIVES

Objective	Planning Target
Water Quality Management	
Provide drinking water that meets customer expectations.	Continue to meet Federal and State water quality standards as well as customer standards for taste and aesthetic throughout the planning period.
Protect aquifer from contamination.	Prevent unacceptable degradation of aquifer according to the Basin Plan throughout the planning period.
	Map contaminated sites and monitor contaminant movement, by December 2008.
	Identify contaminated portions of aquifer and prevent migration of contaminants, by June 2009.
Protect natural streams and recharge areas from contamination.	Prevent unacceptable degradation of natural streams and recharge areas according to the Basin Plan throughout the planning period.
Maximize beneficial reuse of wastewater.	Increase infrastructure and establish policies to use 33 % of recycled water by 2015, 66% by 2025, and 100% by 2035.

PLAN OBJECTIVES

Objective	Planning Target
Flood Management	
Reduce negative impacts of storm water, urban runoff, and nuisance water.	Coordinate a regional flood management plan and policy mechanism by the year 2010.
Environmental Resource Management	
Preserve open space and natural habitats that protect and enhance water resources and species in the region.	Contribute to the preservation of an additional 2,000 acres of open space and natural habitat, to integrate and maximize surface and groundwater management by 2015.
Improve integrated land use planning to support water management.	Coordinate a regional land use management plan by the year 2010.

PLAN OBJECTIVES

Objective	Planning Target
Land Use Planning/Management	
Maintain agricultural land use within the Region.	Preserve 100,000 acres of farmland in rotation through 2035.
Meet growing demand for recreational space.	Contribute to local and regional General Planning documents to provide 5,000 acres of recreational space by 2035.
Improve integrated land use planning to support water management.	Coordinate a regional land use management plan by the year 2010.

CHOOSING ACTIONS

- ✓ Now we know our objectives for the plan
- ✓ We have described current and future conditions
 - e.g., expected mismatch between supply and demand
- ✓ We need to prioritize actions to meet objectives
- ✓ Many possible approaches

SECTION 7

✓ Prioritization

- High
- Medium
- Low



- ## ✓ Which projects do you want to pursue **first** to start meeting the Region's objectives?

SECTION 7

One Approach to Evaluation and Prioritization

- ✓ Draft evaluation criteria (Table 7-1)
 - **CEQA Initiated or Completed**
 - **Costs Estimates Prepared**
 - **Schedule Prepared**
 - **Have Broad Support among AV IRWM Plan Stakeholders**
 - **Integrates Easily with Other Projects**
 - **Number of IRWM Plan Objectives Addressed**
 - **Six or More AB 3030 Elements Addressed**
 - **Six or More Water Management Strategies Addressed**
 - **Number of Regional Priorities Addressed**
 - **Four or More IRWM Plan Preferences Addressed**
 - **Five or More Statewide Priorities Addressed**
 - **Consistency with General Plans**
 - **Serves a Disadvantaged Community**

SECTION 7

Priority Projects for the IRWM Plan

- ✓ Contribute to Plan Objectives
- ✓ Short-Term & Long-Term Projects
- ✓ Consistent with Regional Priorities
- ✓ Getting banking in the Region started

Priority Projects for Prop 50 Grant Application

- ✓ Contribute to Plan Objectives
- ✓ Readiness to proceed
- ✓ Funding Match
- ✓ Consistency w/ IRWM Plan Standards
- ✓ Project integration

SECTION 7

- ✓ Projects given a “high” priority will be assessed further regarding cost/benefit
- ✓ These projects will be discussed in Section 8 for implementation

NEXT STEPS

- ✓ Need more quantifiable data for high priority projects (cost, schedule, planning & design info, etc.)
- ✓ Benefit/Cost Analysis
- ✓ Select Projects for Prop 50 Round 2 Grant Application
- ✓ Discuss and establish an structure for implementation

NEXT AGENDAS

- ✓ Implementation Framework
 - How to pay
 - How to track performance
 - How to administer grant funds
- ✓ Other?



ANYTHING ELSE?



SUPPORT SLIDES

Extra Slides for IRWMP Grant

Additional Information

- Comments on Draft Revised Guidelines Due May 24

- Email comments to:

Tracie Billington – IRWM_GRANTS@water.ca.gov

Scott Couch – scouch@waterboards.ca.gov

- Questions:

Norman Shopay (916) 651-9218 nshopay@water.ca.gov

Scott Couch (916) 341-5658 scouch@waterboards.ca.gov

- Websites:

<http://www.grantsloans.water.ca.gov/grants/integregio.cfm>

<http://www.waterboards.ca.gov/funding/irwmgp/index.html>

Questions & Answers

- **Comments Due May 24**

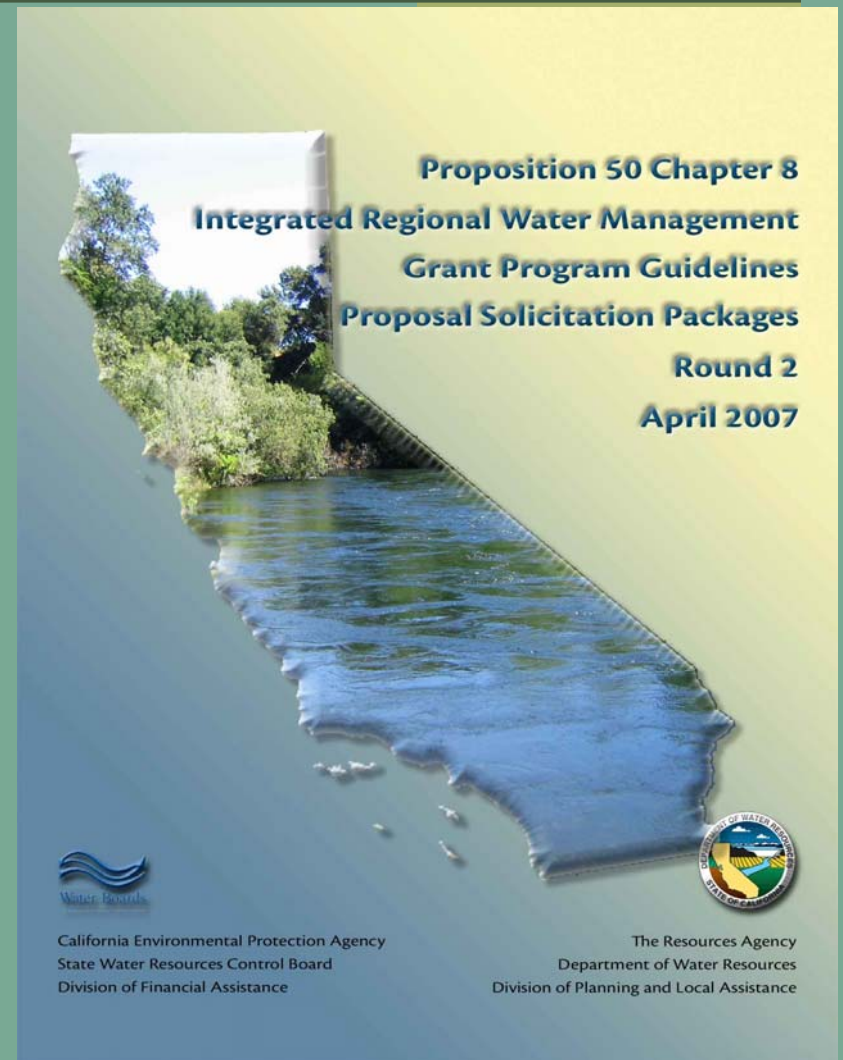
- Email comments to:

IRWM_GRANTS@water.ca.gov
scouch@waterboards.ca.gov

Workshop Goals

- Round 2 Information:
 - Available Funding
 - Changes to:
 - Guidelines and
 - Proposal Solicitation Packages (PSPs)
- Q & A

From DWR, 4/25/07



**Proposition 50 Chapter 8
Integrated Regional Water Management
Grant Program Guidelines
Proposal Solicitation Packages
Round 2
April 2007**

Water Boards

California Environmental Protection Agency
State Water Resources Control Board
Division of Financial Assistance

The Resources Agency
Department of Water Resources
Division of Planning and Local Assistance

Revisions Overview

- Make the minimal necessary changes
- Expedited funding round
 - Award grants by end of FY 2007/08
- Cap grant amounts
- Geographic funding distribution

Revisions Overview

- Guidelines and PSPs
 - One document
- Improved Readability
 - Text rearranged for better logic and flow
 - Eliminated duplicative text
- Added Schedule
- New Appendix B
 - FAAST Attachment Instructions
 - Detailed FAAST instructions available online

From DWR, 4/25/07

Revisions: Maximum Grant Amount

- \$25 million
 - Combined total of Round 1 and Round 2
- Exceptions
 - Coastal Projects
 - Separate but overlapping Regions
- One contract per region

Revisions: General Program Requirements

- Clarifying language:
 - Streambed Alterations
 - Updated text Litigation Waiver
 - Deleted text about DWR reviews of 2005 UWMPs

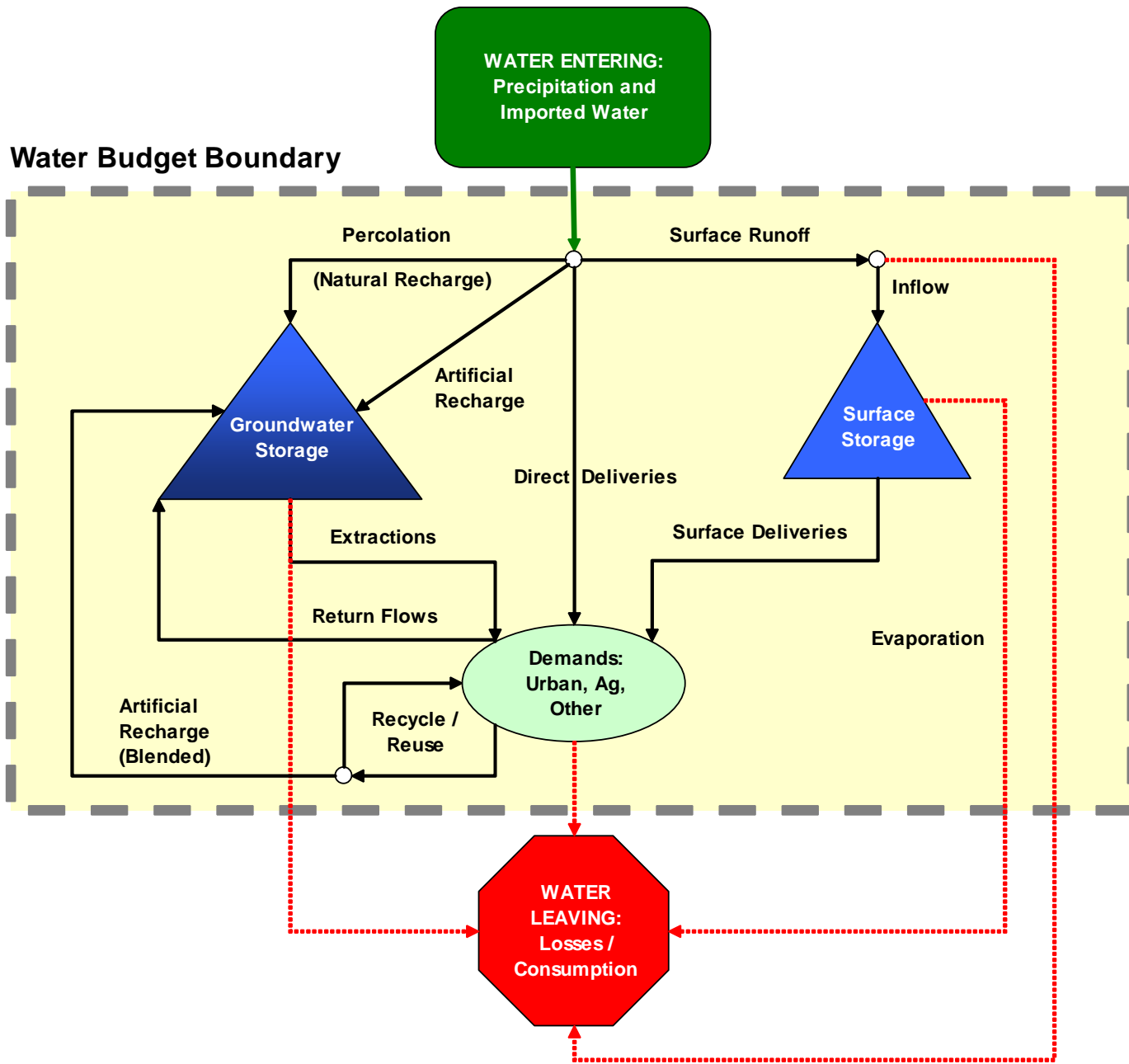
Revisions: Program Preferences Statewide Priorities

- Added EJ as a Program Preference
- Removed Statewide Priorities
 - Guidelines
 - Selection Panel Factors
 - Scoring Criteria

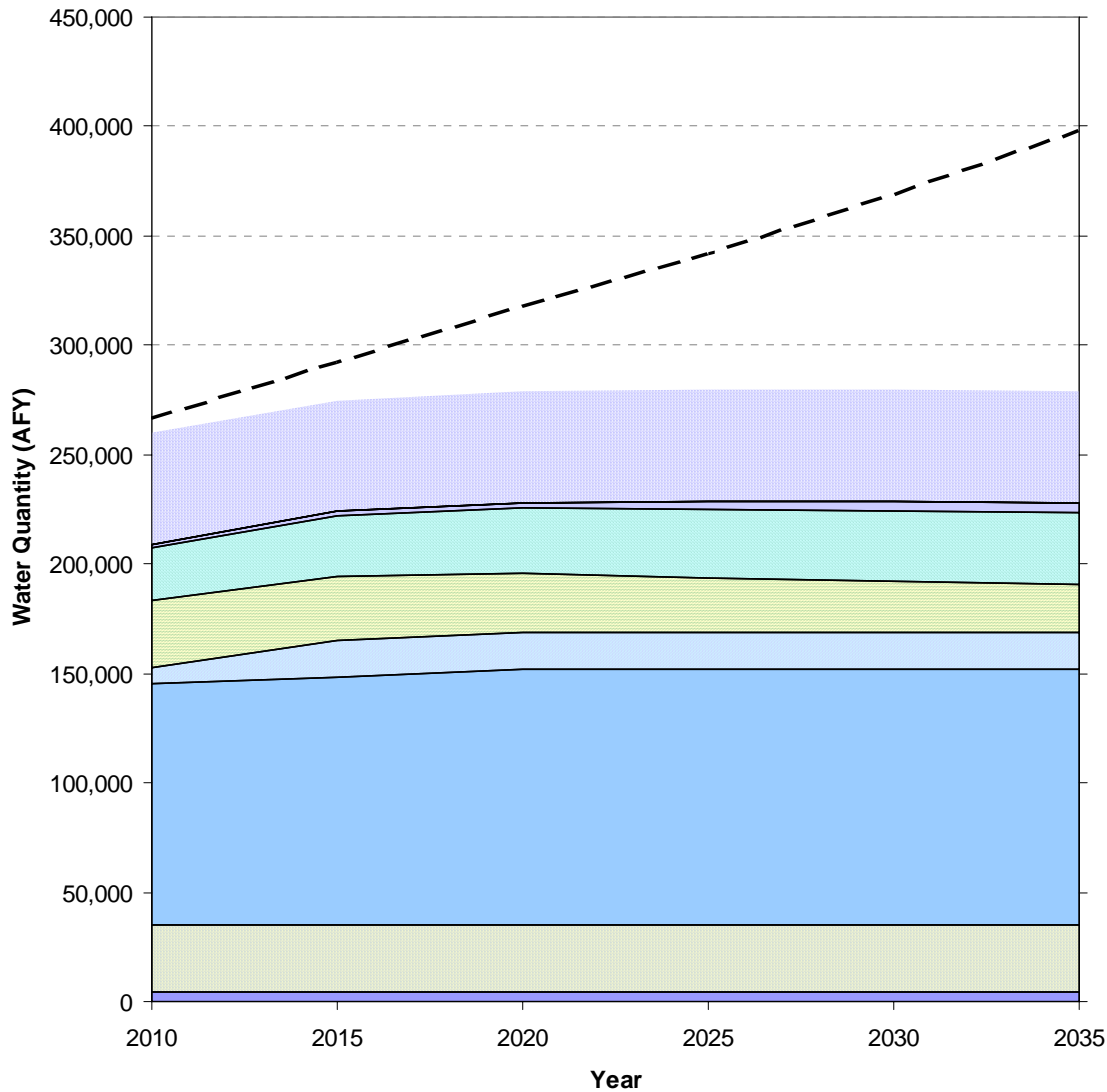
Revisions: Appendix C

Step 2 PSP

- Economic Analysis
 - Dollar Value Base Year now 2006
- Exhibit 6 Waiver of Funding Match
 - Detailed Census Guidance deleted
 - Funding Match examples deleted



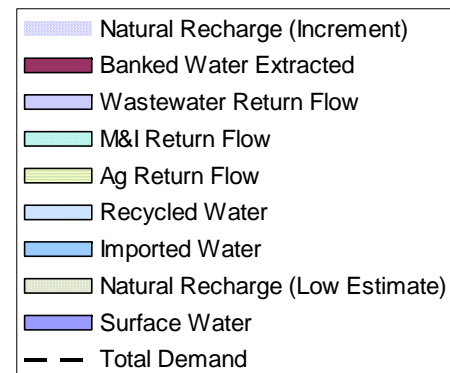
AVERAGE YEAR



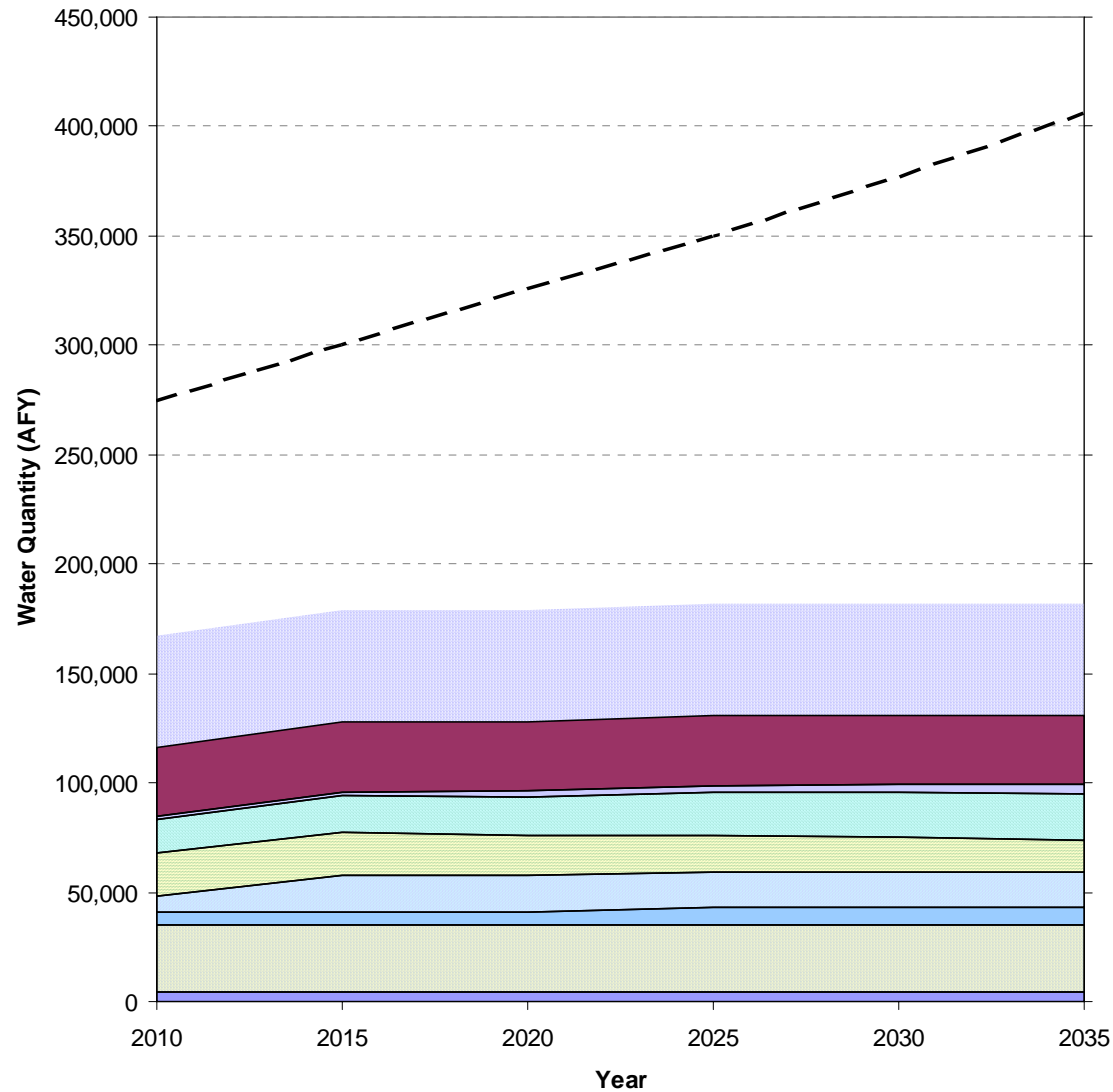
2035 Demand = 398,000 AFY

2035 Supplies = 279,000 AFY

MISMATCH = 119,000 AFY



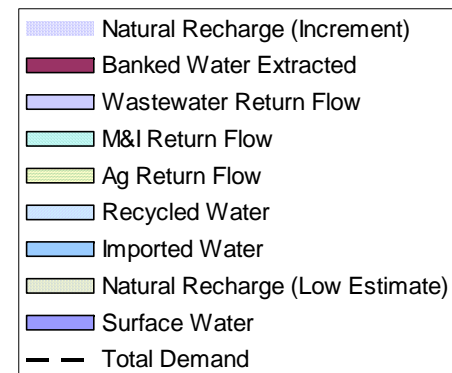
SINGLE DRY YEAR



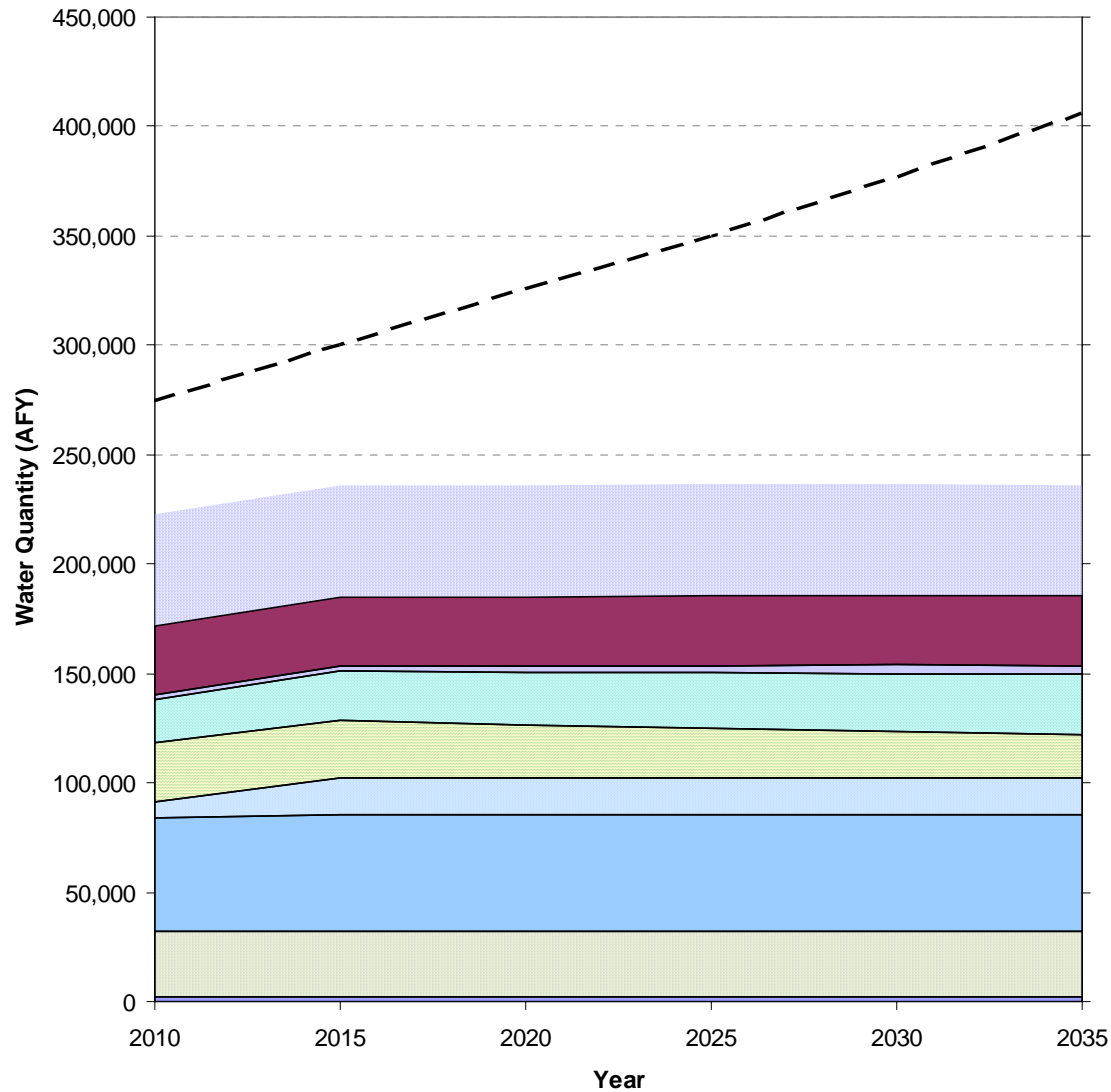
2035 Demand = 406,000 AFY

2035 Supplies = 178,000 AFY

MISMATCH = 228,000 AFY



MULTI-DRY YEAR



2035 Demand = 406,000 AFY

2035 Supplies = 236,000 AFY

MISMATCH = 170,000 AFY

