



*Water Supply Update  
Statewide & in the  
Antelope Valley*

**Antelope Valley Integrated  
Regional Water Management**

**Stakeholder Meeting**

**January 14, 2015**

# *Recent Precipitation - Statewide*

## *State Water Project - California Aqueduct*

- **Sacramento region watershed**
- **Good rains in December**
- **Record storms stabilized reservoir levels**



# Recent Precipitation - Statewide

Sacramento Region Summary			
Precip: 8 Station Index			
Season to Date	108%	% Avg year	46%
Northern Sierra Snow Water Content			
% to Date	43%	% Apr 1	20%
Reservoir Storage			
Reservoir	%Hist.Avg.	%Capacity	*Encrch
Shasta	66%	42%	-1566
Oroville	62%	39%	-1642
New Bullards	88%	51%	-300
Folsom	91%	45%	-134



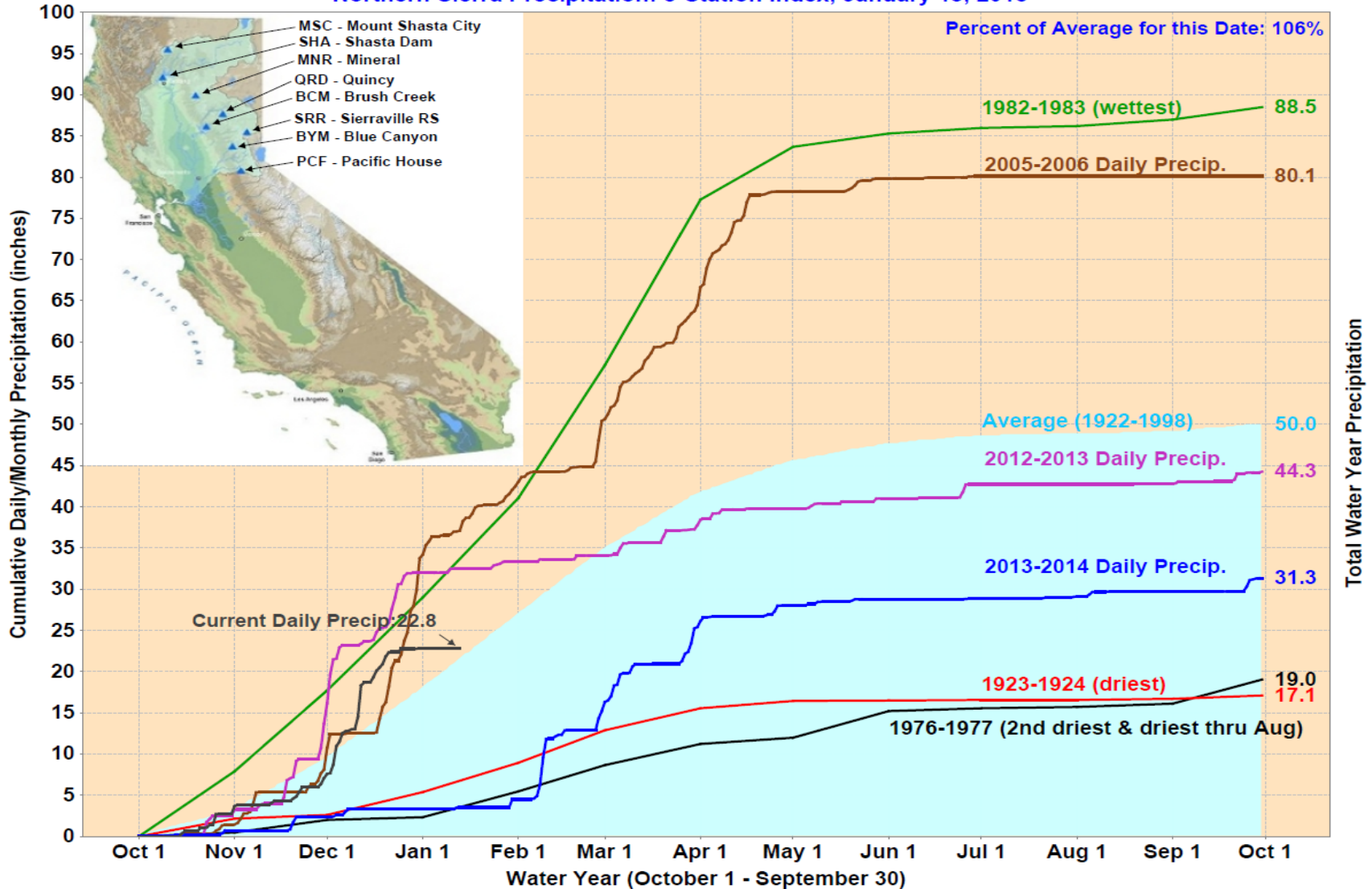
# *Recent Precipitation - Statewide*

## *State Water Project - California Aqueduct*

- Step in the right direction
- Multi-year drought → Multi-storm recovery
- Need series of colder storms in January thru March

# Recent Precipitation - Statewide

Northern Sierra Precipitation: 8-Station Index, January 13, 2015



# *Forecast - Statewide*

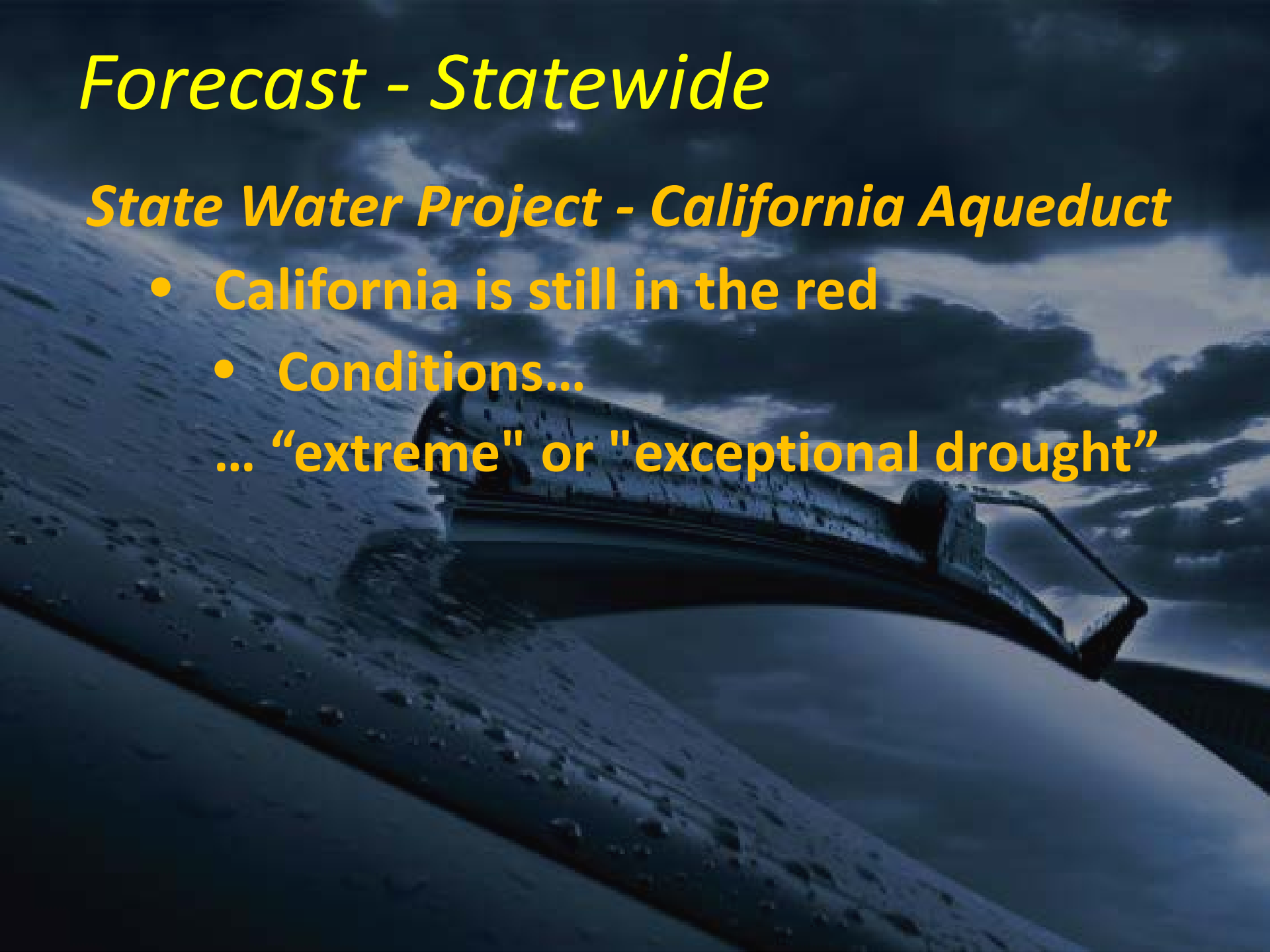
## *State Water Project - California Aqueduct*

- **Dry and mild conditions for Sacramento**
- **Widespread precipitation may return to the region this weekend**
- **Possibly get 0.2 inch – Only 8% of Normal**

# *Forecast - Statewide*

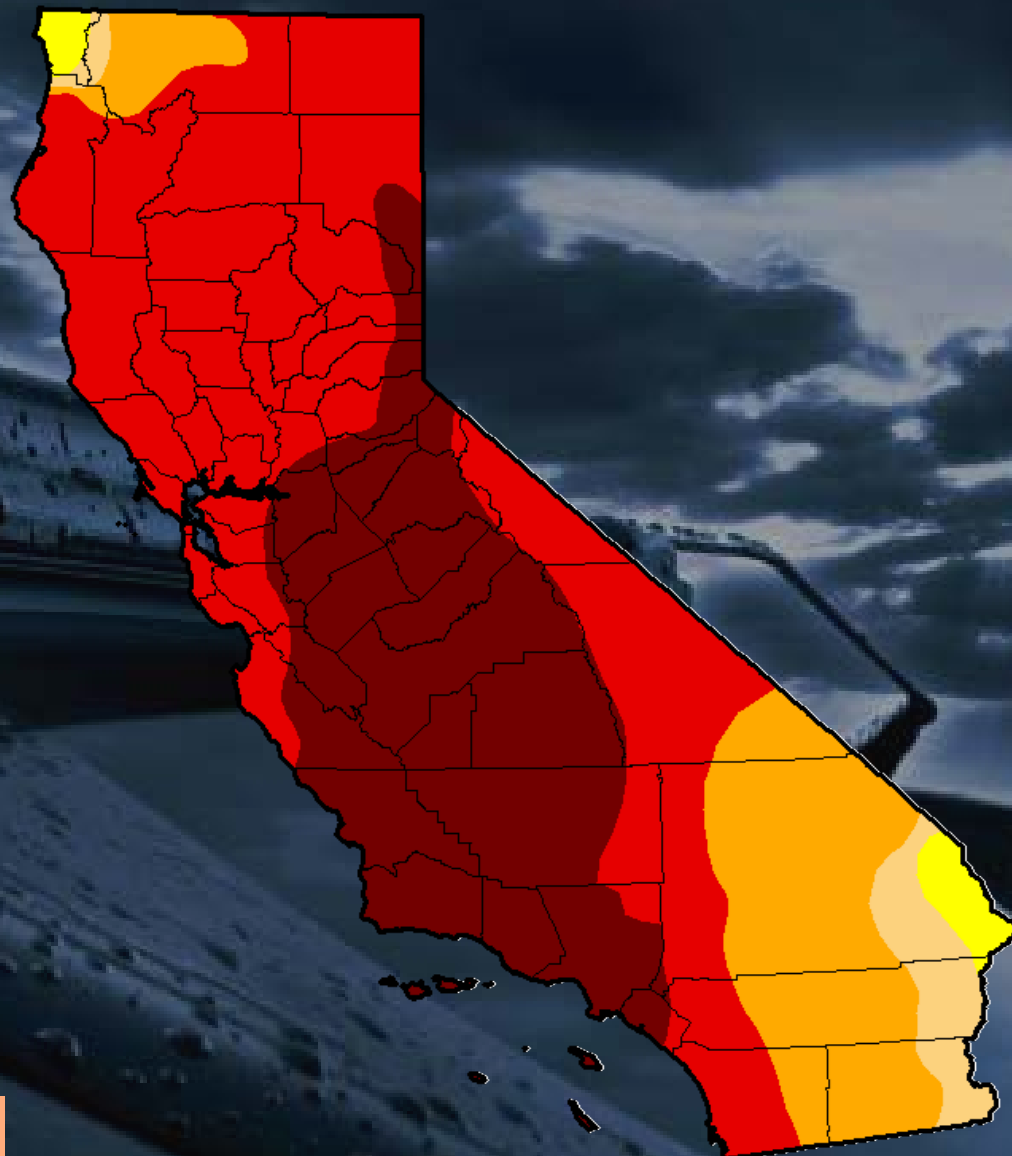
## *State Water Project - California Aqueduct*

- California is still in the red
- Conditions...  
... "extreme" or "exceptional drought"



# Forecast - Statewide

*Still in the Red!*





# *Forecast - Statewide*

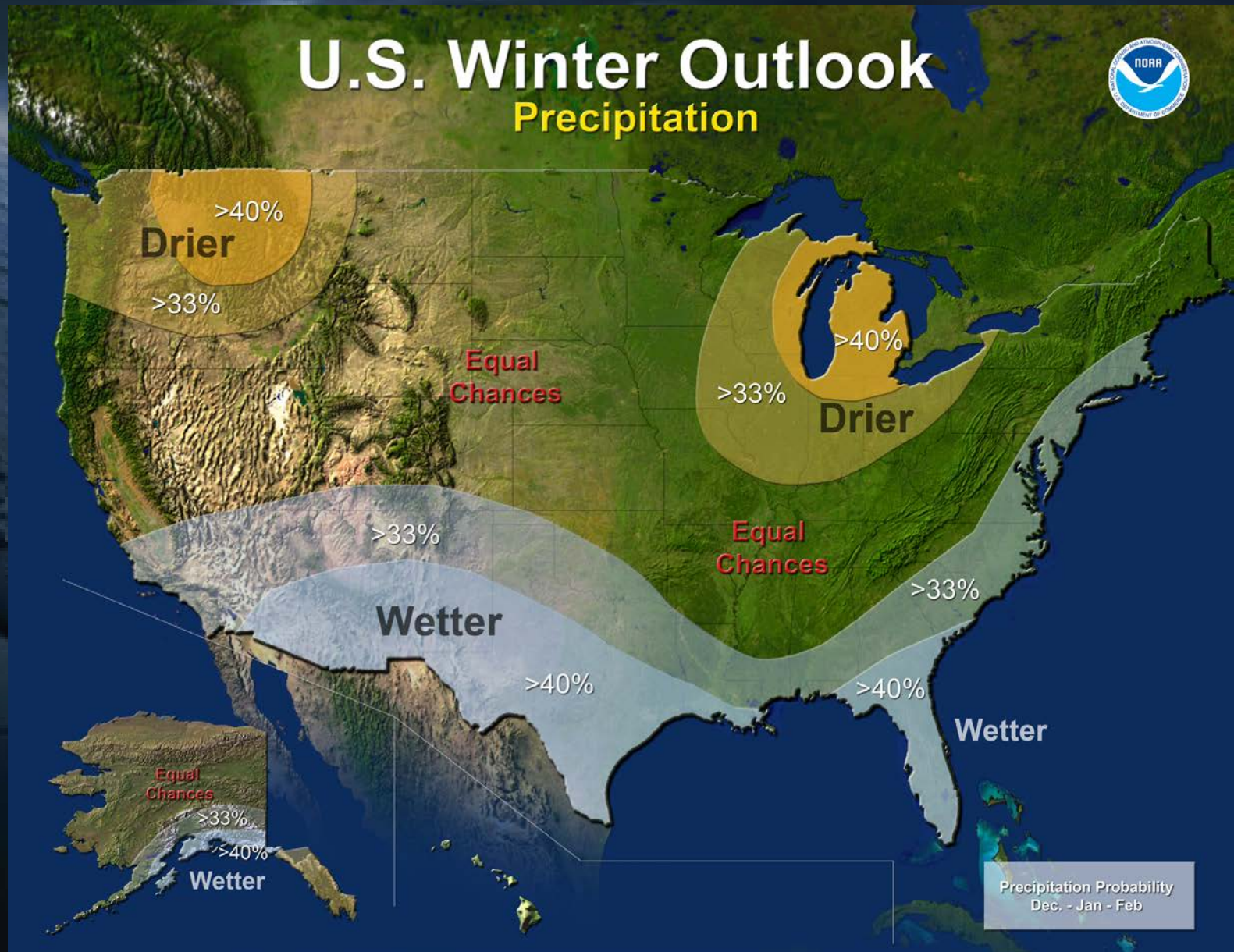
## *The “RRR” Returns...*

### *‘Ridiculously Resilient Ridge’*

- **High-pressure ridge over California**
- **Continuing dry & warmer conditions**



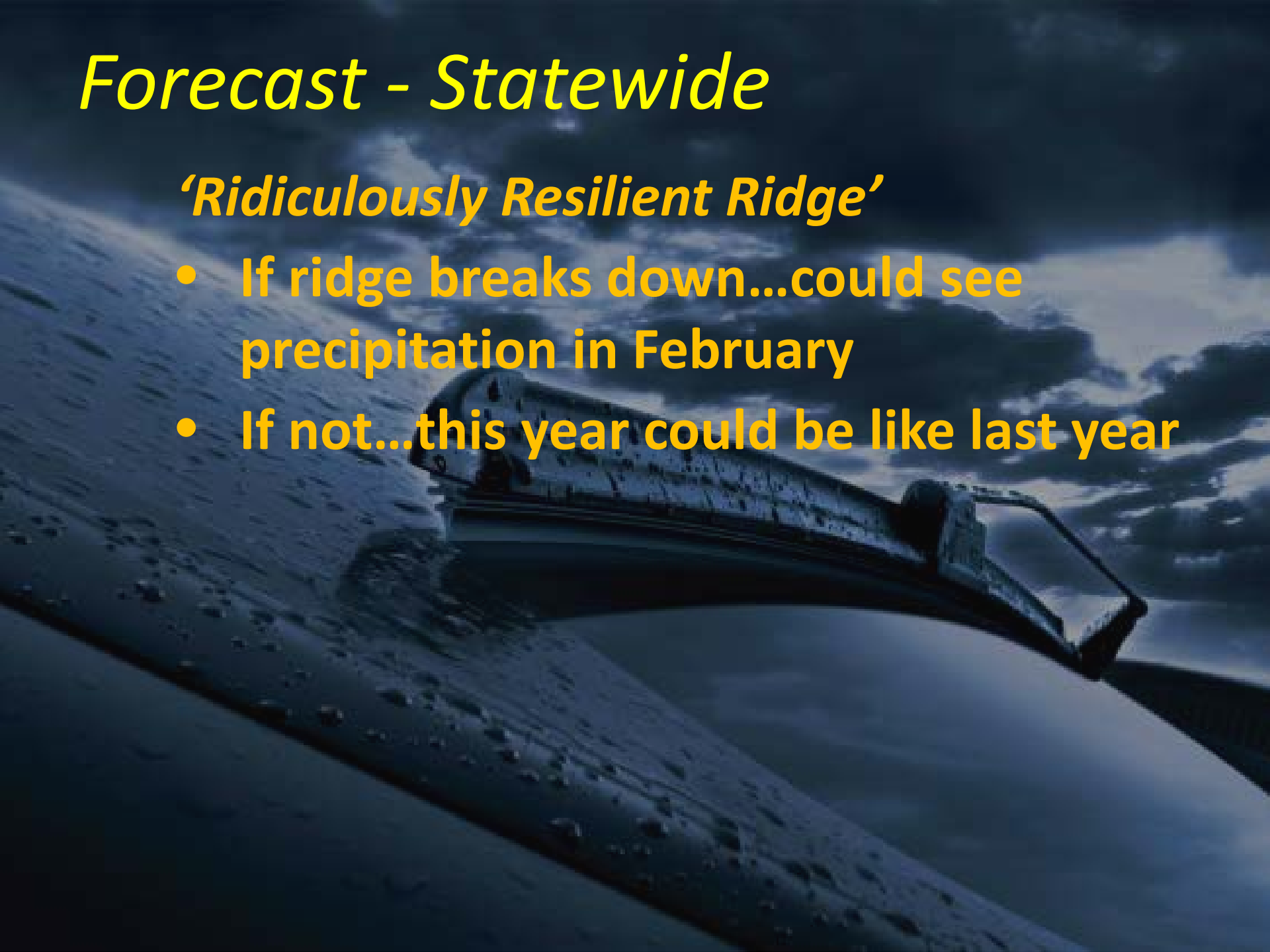
# Forecast - Statewide



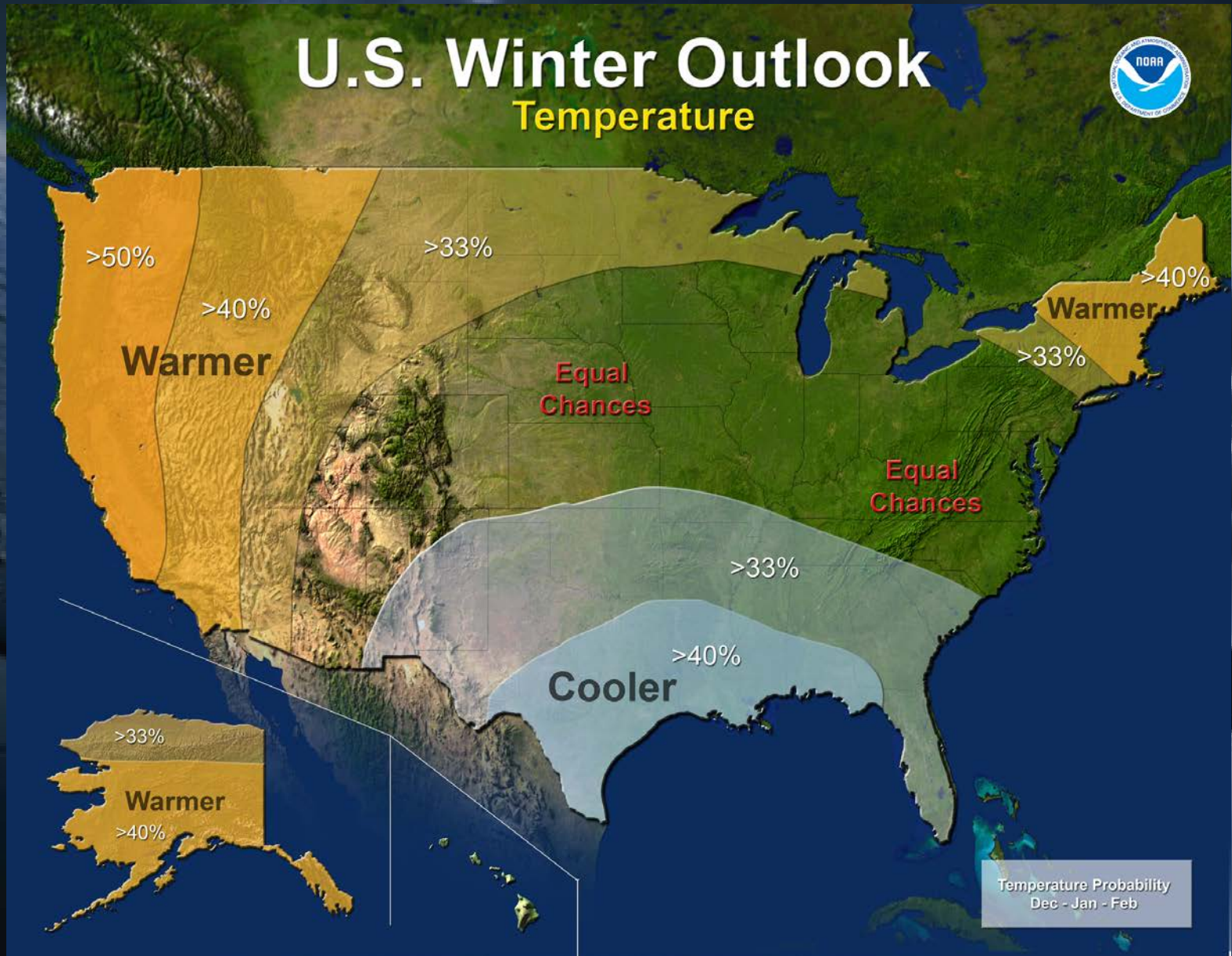
# *Forecast - Statewide*

## *'Ridiculously Resilient Ridge'*

- If ridge breaks down...could see precipitation in February
- If not...this year could be like last year



# Forecast - Statewide



# *Recent Precipitation - Locally*

*“Record rain on Sunday, but...”*

- **Lancaster: 0.72 inch - Record: 0.57” in 2001**
- **Palmdale: 0.63 inch - Record: 1.15” in 2001**
- **Acton: 0.47 inch of rain**
- **Edwards Air Force Base: 0.33 inch of rain**

# Forecast - Locally

*“...no more coming...” (AV Press)*

- Rainy weather has moved easterly
- High-pressure ridge
- Southern California dry through the foreseeable future
- Some clouds maybe but...
  - Experts say: “no precipitation for Southern California”

# *State's Snow Survey*

## *Initial Snow Survey*

- More snow than last year
- Initial manual snowpack survey (Dec)
  - 21.3 inch of snow
  - 4 inches snow water
  - 33% of normal

# State's Snow Survey

## Initial Snow Survey

- More recent automated update (Jan)
  - 46% of normal
- In summary → More snow found...  
...water content not great





# *State's Reservoir Levels*

## *Storage Reservoirs*

- **Continue to remain low**
  - **Folsom Lake 45% of capacity**
  - **Lake Oroville 39% of capacity**
  - **San Luis 46% of capacity**
  - **Lake Shasta 42% of capacity**

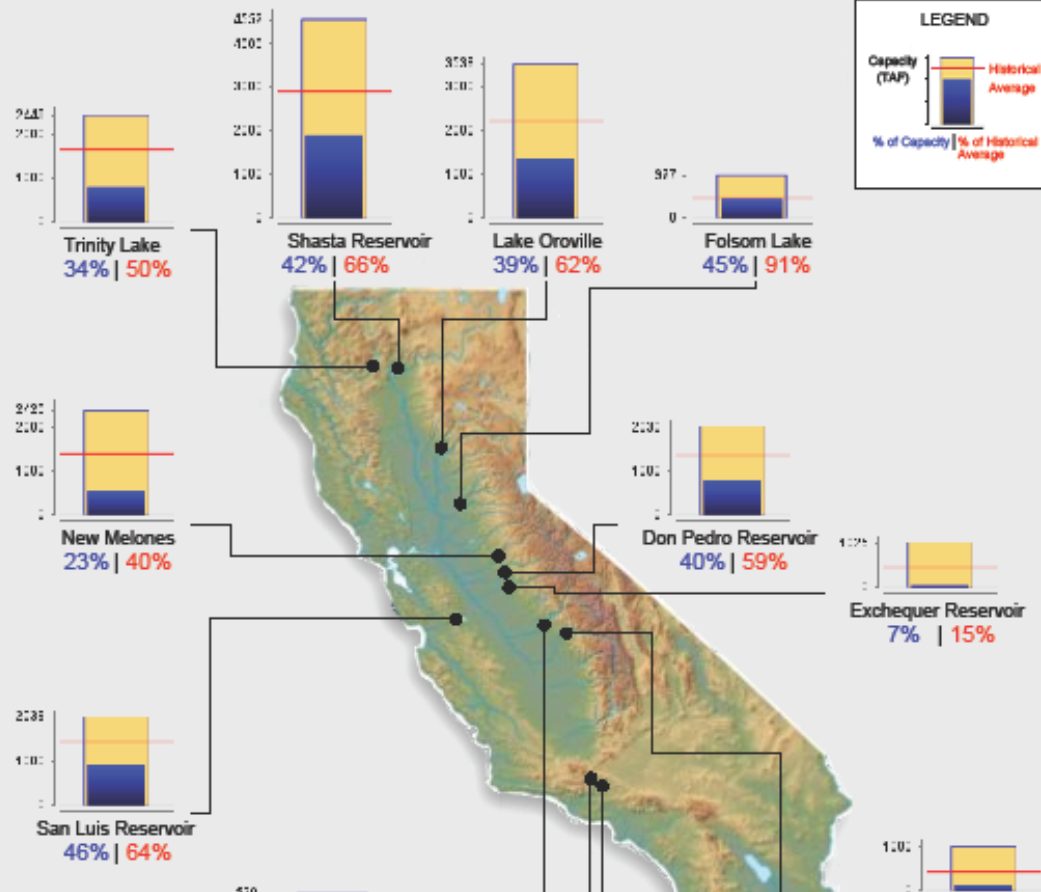
# State's Reservoir Levels



## Reservoir Conditions

Ending At Midnight - January 12, 2015

### CURRENT RESERVOIR CONDITIONS



# *Water Supply - Statewide*

## *Initial State Water Project Supply*

- Higher than 2014 (0%-5%)
- Current allocation → 10%
  - Over 165,000 Acre-Ft available...  
...Only 16,500 AF can be taken
- If Northern Calif. storms continue  
... could see increase in allocation

# *Water Supply – Locally*

## *Local swap of available sources*

- **60% to 70% Local groundwater**
- **30% to 40% Imported State water**



# *Water Conservation – Statewide*

*Californians conservation improves  
...slightly*

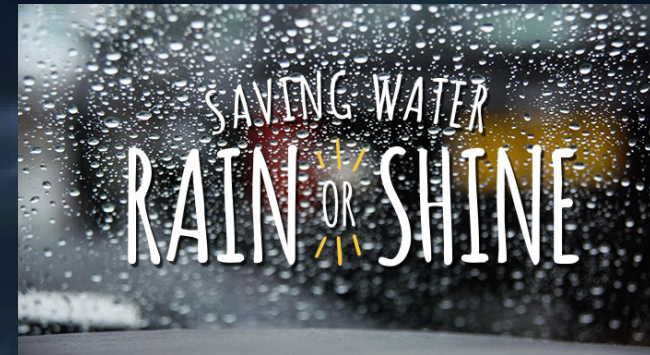
- **Cut overall water use by 9.8%**
- **Gov. Jerry Brown wanted 20% reduction**
- **Northern California was the biggest help with 26% reduction**

# *Water Conservation – Statewide*

*State conservation website*

*: SaveOurWater.com*

- **SaveOurWater.com**
- **Promoting campaigns**
  - **“Saving Water...Rain or Shine”**
  - **“Don’t Waste Summer”**
    - **New daily conservation tips for 100 days of summer**



# *Water Conservation - Locally*

*We're Responding too!*

- **Local water suppliers are responding to the Drought**
- **Local Emergency Proclamations**
- **Implementing conservation programs**
- **Enforcing mandatory restrictions**
- **Providing funding support to customers**



*Water Supply Update  
Statewide & in the  
Antelope Valley*

***Questions?***





*Water Supply Update  
Statewide & in the  
Antelope Valley*

**Antelope Valley Integrated  
Regional Water Management**

**Stakeholder Meeting**

**January 14, 2015**