



# **Antelope Valley Integrated Regional Water Management (IRWM) Plan**

## **Stakeholder Kick-off Meeting**

**May 31, 2006, 9 am - Noon  
Larry Chimbole Cultural Center, Palmdale**

1

## **Agenda**

---

- Welcome and Introductions
- Meeting Objectives
- Overview of IRWM Process and Relation to the California Water Plan
- Watershed Management Approach and IRWM Process in the LA Basin
- Mojave Water Agency and IRWM Process

2

## Agenda (con't)

---

- Antelope Valley IRWM Goals, Governance Structure, and Stakeholder Process
- Breakout Session
- Discussion of Antelope Valley IRWM Plan Outline and Schedule
- Q & A and Next Steps

3

## Meeting Objectives

---

- Provide background information on Proposition 50 Chapter 8, IRWM Process
- Discuss development of IRWMP for the Antelope Valley
- Establish communications and build working relationships

4

# Overview of IRWM Process and Relation to the California Water Plan

Tracie Billington, CA DWR

5

# Watershed Management Approach and IRWMP Process in LA Basin

Dan Lafferty, LACDPW

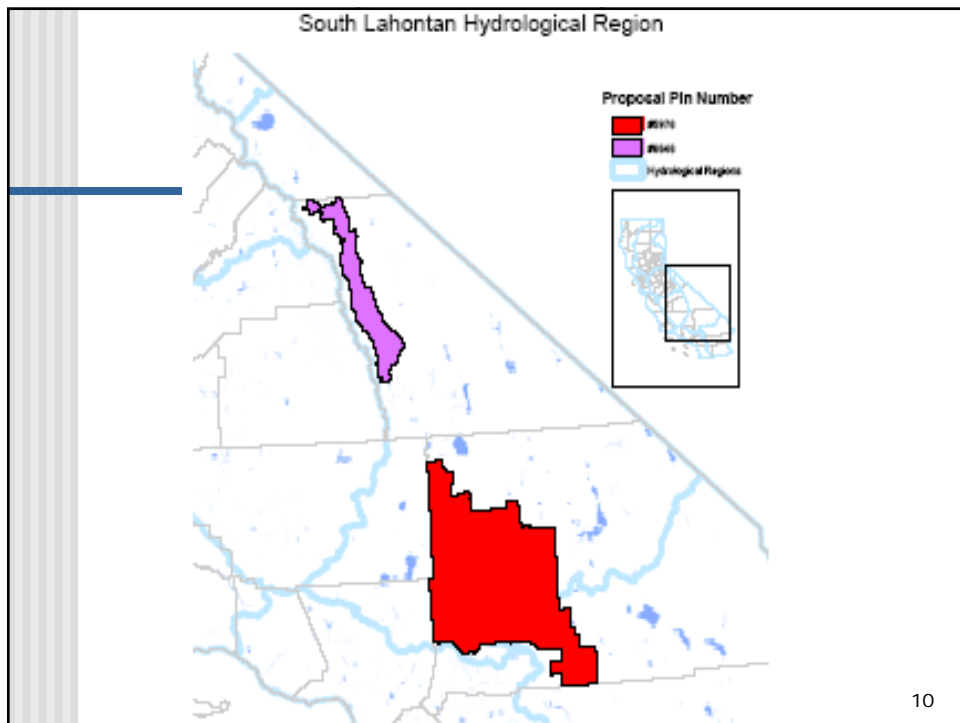
6

# Mojave Water Agency's IRWM Process

Kirby Brill, MWA

# Antelope Valley Region





## Antelope Valley IRWMP Goals

---

- Develop a comprehensive plan to meet the Antelope Valley's future regional needs for water supply reliability by evaluating opportunities for:
  - Water banking and conjunctive use
  - Water recycling
  - Water conservation
  - Water quality protection and improvement
  - Storm water capture and management
  - Flood management
  - Groundwater management
  - Recreation and public access
  - Environmental and habitat protection and improvement

11

## Antelope Valley IRWMP Goals

---

- Foster coordination, collaboration, and communication among Antelope Valley agencies responsible for water-related issues and interested stakeholders to achieve greater efficiencies, enhance public services, and build public support for vital plans and projects.
- Improve regional competitiveness for future state and federal grant funding.

12

## Governance Structure

- Water Code §10530 – Integrated Regional Water Management Planning Act of 2002.
- Regional water management group
  - Three or more local public agencies
  - Two of which have statutory authority over water supply
  - Participate by means of an MOU

13

## Stakeholder Involvement

- Multi-stakeholder effort
- Antelope Valley Region's Initial Stakeholders:

### State Water Project Contractors

- Antelope Valley-East Kern Water Agency
- Littlerock Creek Irrigation District
- Palmdale Water District

### Retail Water Purveyors

- Los Angeles County Waterworks District #40, Antelope Valley
- Quartz Hill Water District
- Rosamond Community Services District

14

# Stakeholder Involvement

---

## **Land-Use Planning Agencies**

- City of Palmdale
- City of Lancaster
- Los Angeles County, Dept. of Regional Planning

## **Regulatory Agencies**

- Lahontan Regional Water Quality Control Board
- California Department of Health Services

## **Environmental Community**

- Antelope Valley Resource Conservation District

## **Building Industry**

- Building Industry Association – Antelope Valley Chapter

15

# Public Involvement Process

---

- Stakeholder meetings will occur at key milestones:
  - May
  - August
  - October
  - December
- Ongoing outreach to businesses, environmental groups, community groups including disadvantaged communities.
- [www.ladpw.org/WWD/avirwmp/](http://www.ladpw.org/WWD/avirwmp/)

16



# Issues, Objectives, and Project Concepts

---

Breakout Session

17

## IRWM Plan Outline

---

- IRWM Plan must contain the following elements (IRWM guidelines):
  - Regional description
  - Regional planning objectives
  - Water management strategies & integration
  - Regional priorities
  - Implementation
  - Impacts and benefits
  - Technical analysis and plan performance
  - Data management
  - Financing
  - Relation to local planning
  - Stakeholder involvement & coordination with State and Federal agencies

18

## Regional Description

---

- Provide region maps with descriptive narrative, internal boundaries, major water related infrastructure, and major land-use division.
- Describe quality and quantity of water resources.
- Describe water supplies and demands for next 20 years.
- Discuss environmental resources.
- Discuss social and cultural makeup, cultural and social values, and economic conditions and trends.

19

## Regional Planning Objectives

---

- Identify regional planning objectives and the manner in which they were determined.
- Address major water related objectives and conflicts.

20

## Water Management Strategies & Integration

---

- Identify appropriate water management strategies to meet the objectives of the plan.
- Discuss how these strategies work together.
- Discuss the added benefits of integration of multiple water management strategies.

21

## Regional Priorities

---

- Present regional priorities for implementation.
- Identify short-term and long-term implementation priorities.

22

## Implementation

---

- Identify ongoing/planned actions, projects, and studies.
- Develop timelines for active and planned projects.
- Identify entities responsible for project implementation.
- Identify linkages or interdependence between projects.
- Demonstrate economic and technical feasibility of projects.

23

## Impacts and Benefits

---

- Evaluate potential negative impacts from plan implementation.
- Describe advantages of the regional plan as opposed to individual local efforts.
- Identify interregional benefits and impacts.
- Describe benefits to disadvantaged communities.

24

## Technical Analysis & Plan Performance

---

- Discuss data, technical methods, and analyses used in plan development.
- Identify data gaps.
- Discuss measures and monitoring systems to evaluate project/plan performance.

25

## Data Management

---

- Describe mechanisms by which data will be managed and disseminated to stakeholders and the public.
- Discuss how data collection will support statewide data needs.
- Assess the state of existing monitoring efforts.
- Discuss the integration of data into the SWRCB's Surface Water Ambient Monitoring and Groundwater Ambient Monitoring Assessment Programs.

26

## Financing

---

- Identify beneficiaries and potential funding/financing for plan implementation.
- Discuss ongoing support and financing for operation and maintenance of implemented projects.

27

## Relation to Local Planning

---

- Discuss how the identified actions, projects, and studies relate to existing local planning documents.
- Demonstrate coordination with local land-use planning decision-makers.
- Discuss how local planning documents relate to the IRWM water management strategies.

28

## Stakeholder Involvement & Coordination

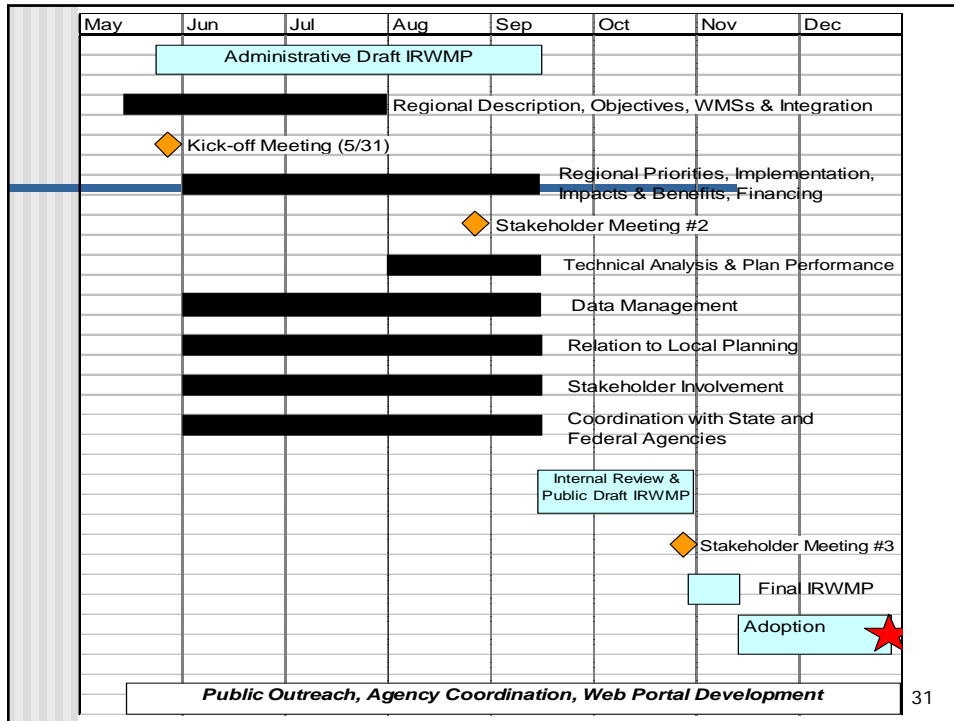
- Discuss how:
  - Stakeholders are identified,
  - They participate in planning and implementation efforts, and
  - They can influence decisions made regarding water management.
- Document public outreach activities.
- Discuss mechanisms and processes that facilitate stakeholder involvement and communication.

29

## Stakeholder Involvement & Coordination (Con't)

- Discuss partnerships developed during the planning process.
- Discuss environmental justice concerns.
- Discuss disadvantaged communities and their involvement in the planning process.
- Discuss coordination with State or Federal agencies.

30



31

## Q & A

---



32