

**AGENDA**  
**Salt/Nutrient Management Plan Stakeholder Meeting**

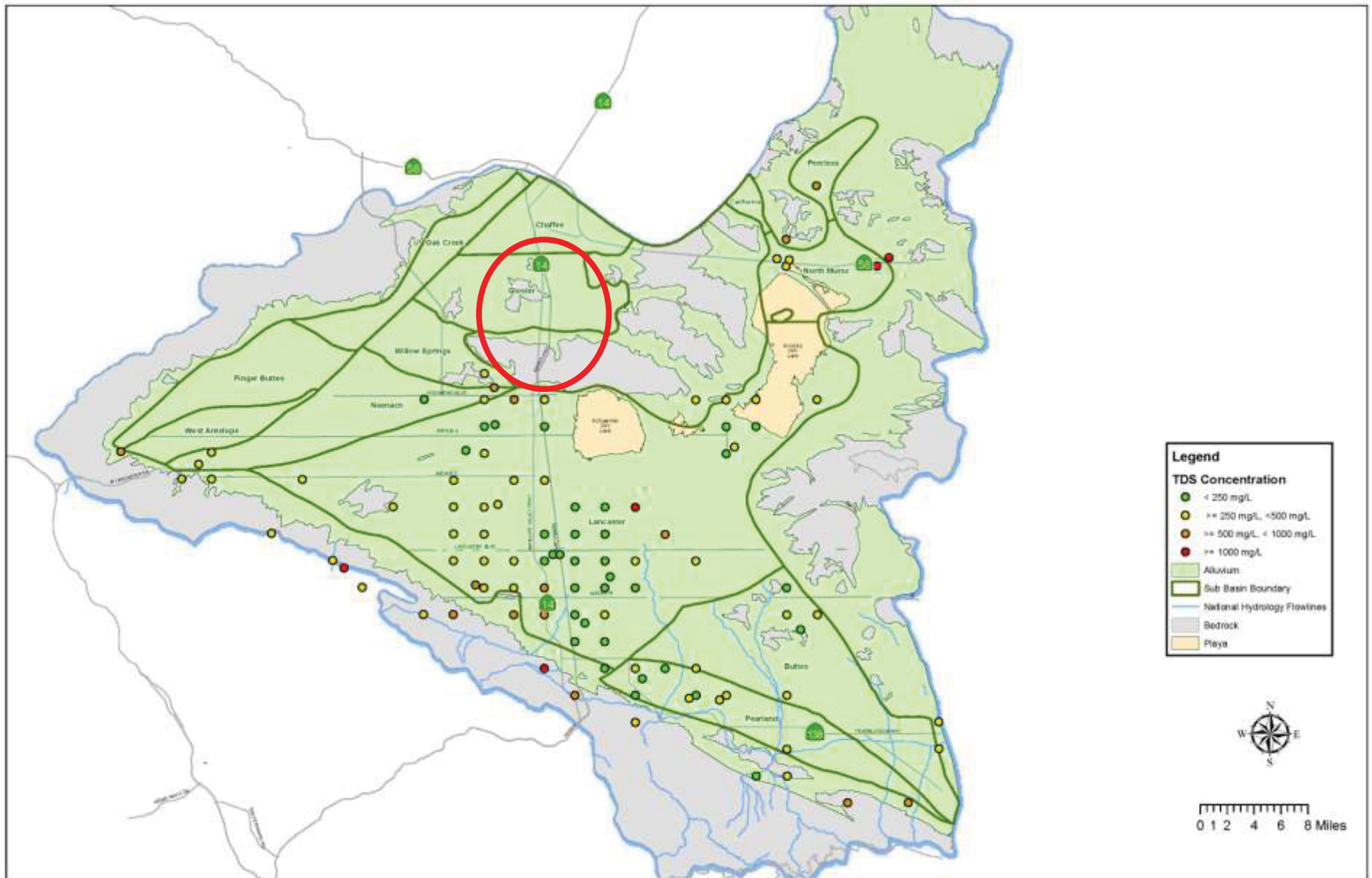
**September 18, 2013**  
**Palmdale City Hall – Lilac Room**  
**38350 Sierra Highway, Palmdale, 93550**  
**11:00 a.m. - 12:00 p.m.**

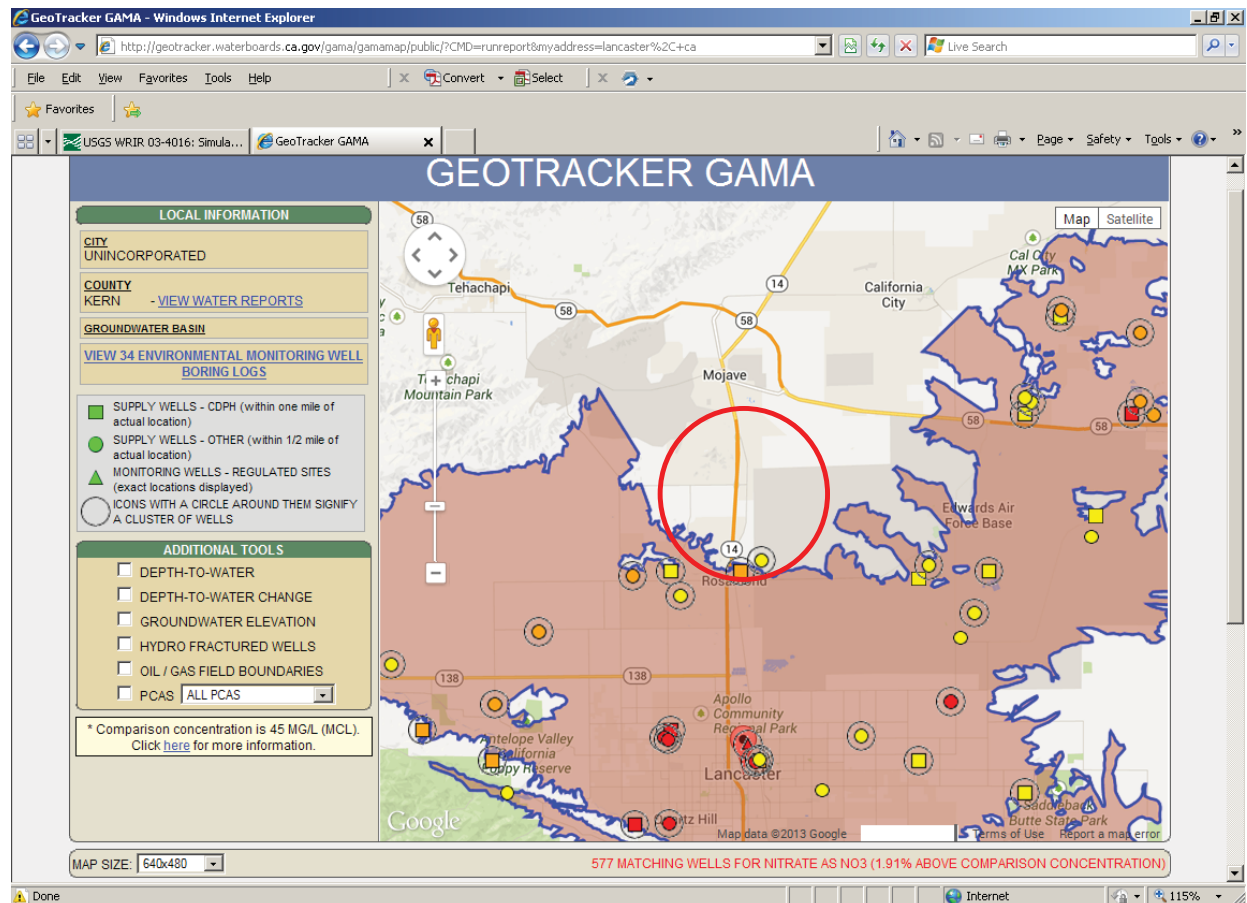
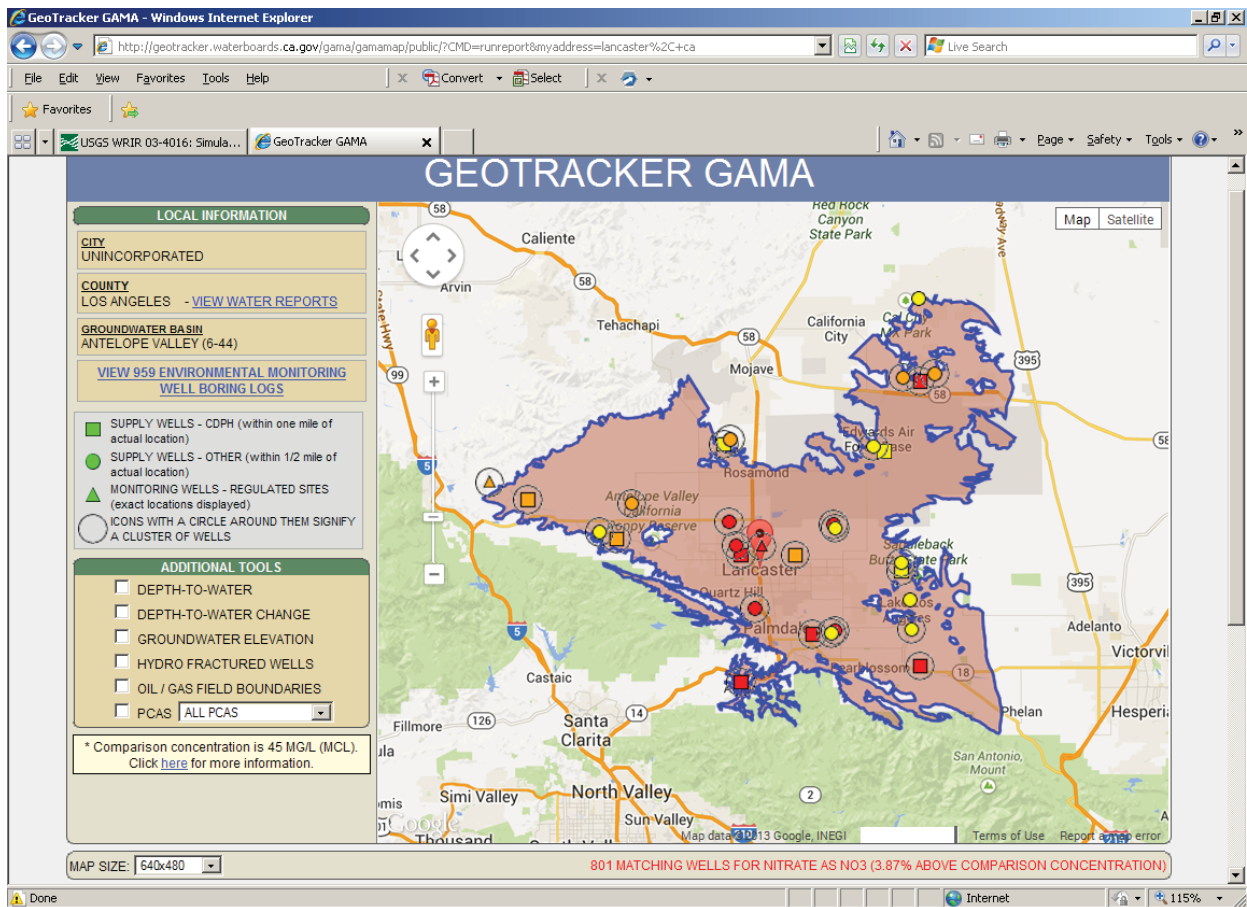
- 1) Welcome and Self-Introductions
- 2) Water Board/DWR Updates
- 3) Draft SNMP Comments
  - a. GAMA & USGS Data
  - b. Separate Water Quality Objectives for each Sub-Basin
  - c. Monitoring Triggers
  - d. Salt Balance Update
- 4) New Projects

Please e-mail comments to Tim Chen at [tchen@dpw.lacounty.gov](mailto:tchen@dpw.lacounty.gov)

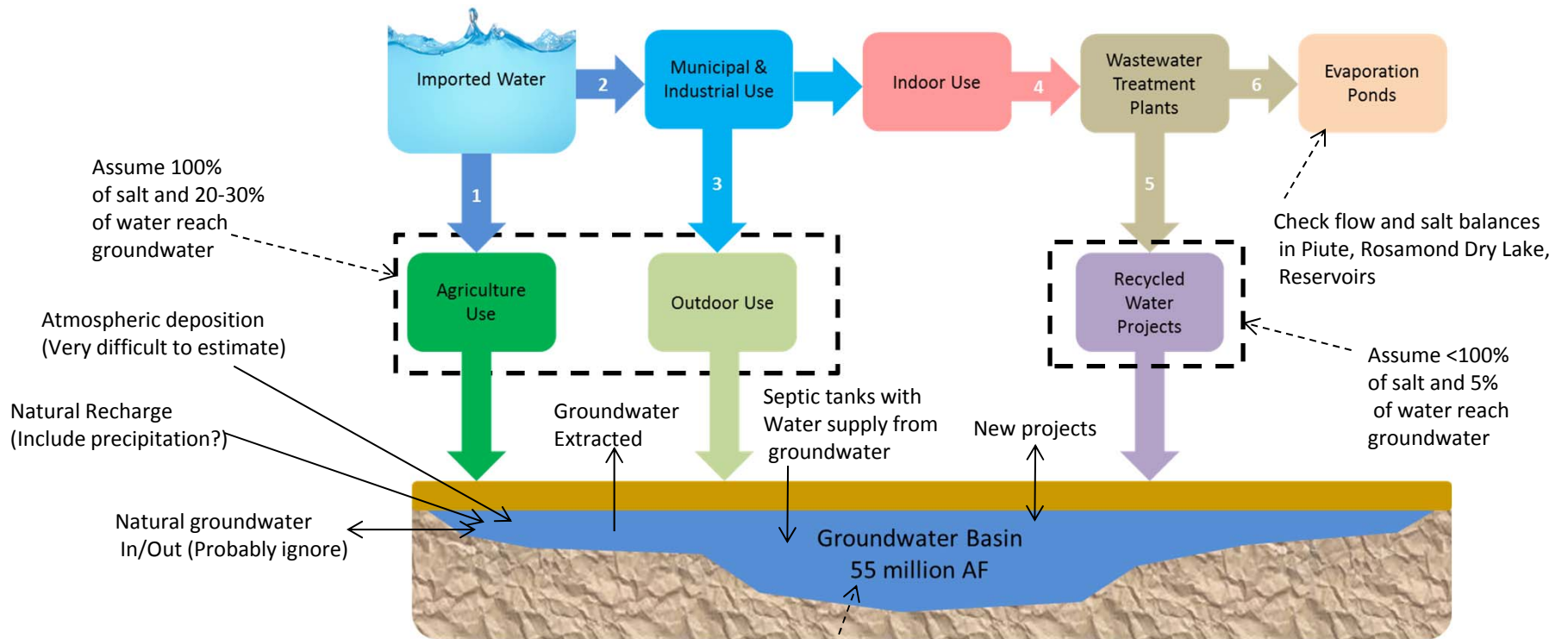
Adjourn

Figure 3-8: Antelope Valley Groundwater Basin 2001-2010 Mean Total Dissolved Solids Concentrations (GAMA)





# Potential Modifications to Current Groundwater Model



Assume 100% of salt and 20-30% of water reach groundwater

Atmospheric deposition (Very difficult to estimate)

Natural Recharge (Include precipitation?)

Natural groundwater In/Out (Probably ignore)

Check flow and salt balances in Piute, Rosamond Dry Lake, Reservoirs

Assume <100% of salt and 5% of water reach groundwater

Need to check on volume (May need to test several) and allow for change in storage

**Notes:**

- Use reasonable assumptions
- Identify missing data/limitations
- Coordinate with IRWMP efforts
- Incorporate all relevant factors
- Avoid double-counting
- Provide flexibility to refine in future (e.g., improved data/assumptions, sub-basins, allow Change in storage)
- Consider lag times?