



SANITATION DISTRICTS OF LOS ANGELES COUNTY

**County Sanitation  
District Nos. 14 & 20  
Recycled Water  
Opportunities**

September 27, 2006

# Wastewater Management System





County Line

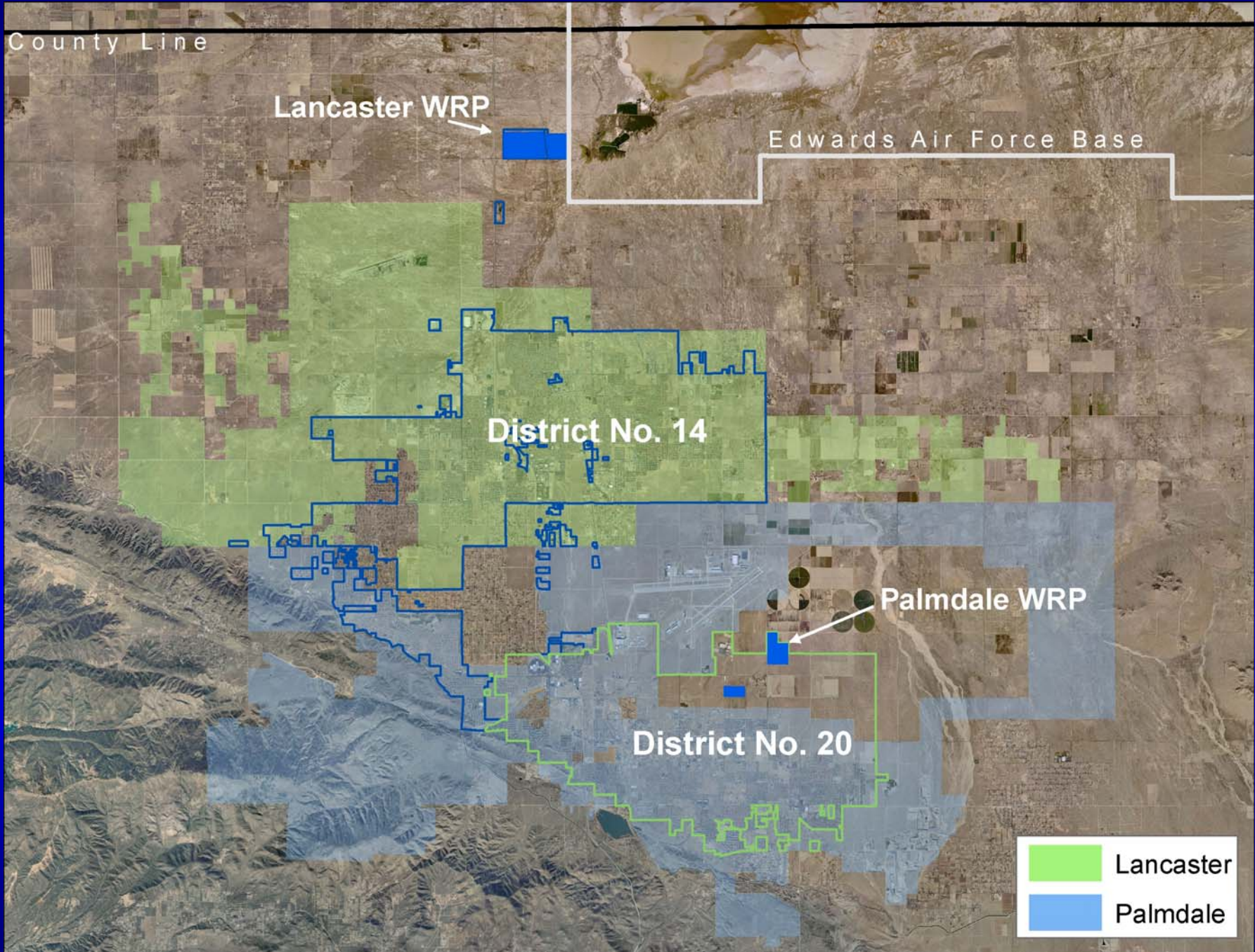
Lancaster WRP

Edwards Air Force Base

District No. 14

Palmdale WRP

District No. 20



# Facilities Plan Objectives

- ✓ Expand facilities to meet the future needs of Districts No. 14 (2020) and No. 20 (2025)
- ✓ Meet Water Quality Requirements set forth by Regulatory Agencies
- ✓ Accommodate emerging recycled water reuse opportunities

# Wastewater in the Antelope Valley

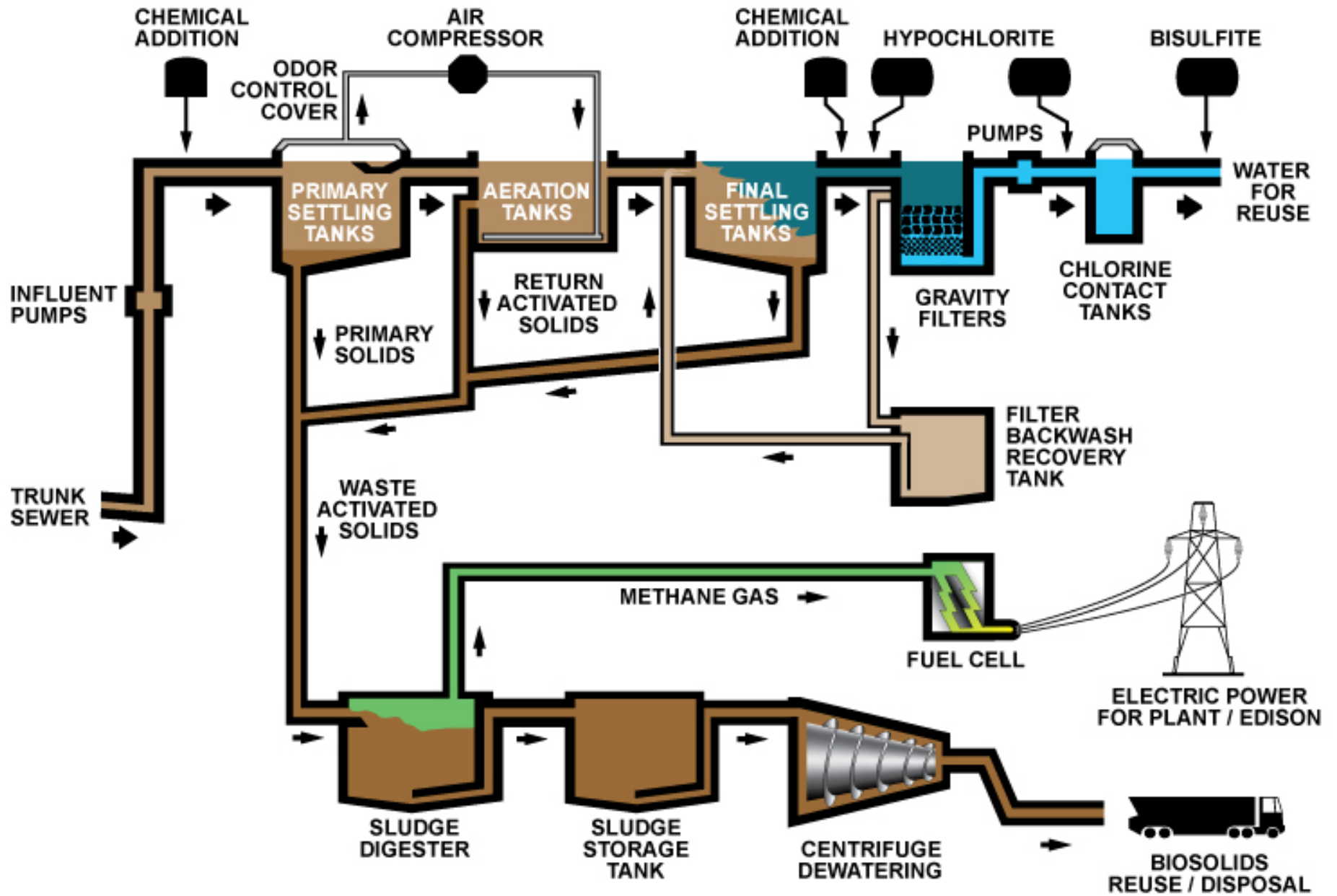
(Acre Feet)

	<u>2005</u>	<u>2025</u>
Lancaster WRP	13,800	29,000
Palmdale WRP	9,400	25,000
<b>Total</b>	<u>23,200</u>	<u>54,000</u>

# PRIMARY

# SECONDARY

# TERTIARY

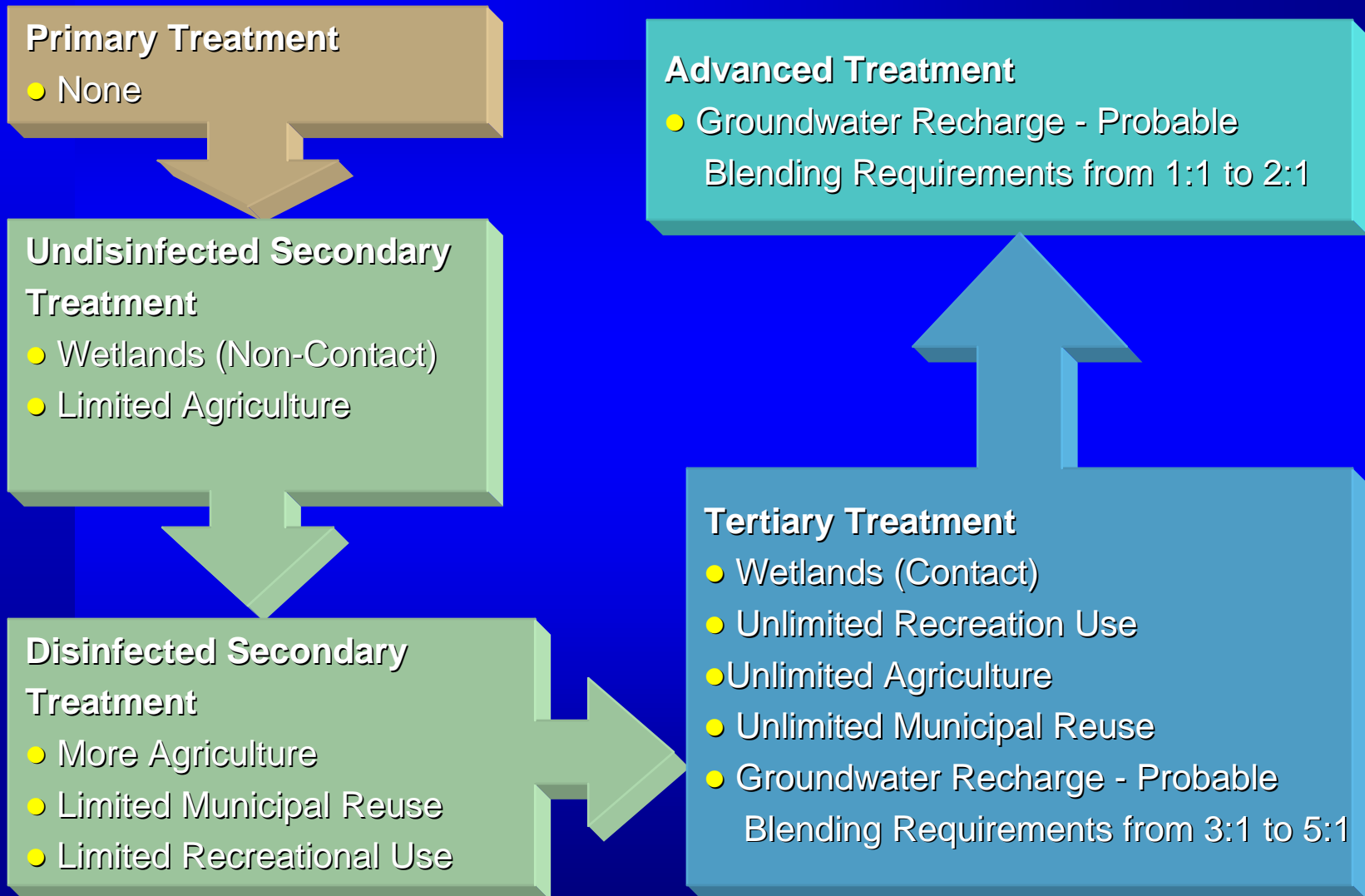




# Sanitation Districts Water Reuse Experience

- 1962 - Program Began in Los Angeles Basin
- 24 - Agencies and Water Purveyors in Partnership
- 500 - Current Reuse Sites
- 40% - Amount of Reclaimed Water Reused
- 60% - Amount of Reclaimed Water Lost to Ocean

# Recycled Water Reuse Applications





# Potential Water Reuse In The Antelope Valley



Landscape  
Irrigation



Groundwater  
Recharge



Golf  
Courses

# Reuse Priorities for Antelope Valley

## Immediate

Agricultural Reuse

Meet RWQCB Orders

## Short Term

Municipal Reuse

Establish Partnerships

Build Distribution Systems

## Long Term

Groundwater Recharge

Basin not Adjudicated

3 Projects in California

12 Years to Develop

Water for Blending

# PERMITTING

- MASTER WATER RECYCLING PERMIT
  - Issued by Regional Water Quality Control Board
  - Water Code Section 13523.1
- ORDINANCE
- RULES AND REGULATIONS
- INSPECTION