

# ANTELOPE VALLEY SALT/NUTRIENT MANAGEMENT PLAN STAKEHOLDER MEETING MINUTES

March 13, 2012

Location: Palmdale Water District

**Attendees:** Tom Barnes (AVEK), Jessica Bunker (LACWD), Erika de Hollan (LACSD), Bob Large (Lake Town Council), Yvonne Malikowski (Lake LA Park Association), Vicki Medina (AV Board of Trade), Thomas Mele (Edwards AFB), Gordon Phair (City of Palmdale), Dave Rydman (LACWD), Chris Vidal (PWD), Jamshed Yazdani (City of Lancaster), Jan Zimmerman (Lahontan RWQCB)

## RWQCB/DWR Updates

Jan Zimmerman mentioned that she would provide the stakeholder group with the Salt/Nutrient Management Plan (SMP) acceptance letter from the Lahontan Region Water Quality Control Board (Regional Board) for the approved Scope of Work.

The Los Angeles County Sanitation District presented an overview of the SMP and the current efforts in the Antelope Valley to the Los Angeles County Farm Bureau (Farm Bureau) on January 26, 2012. The aim of this outreach effort was to update members of the agriculture community on the development of the SMP and encourage their contribution to the plan. The Los Angeles County Waterworks District will follow up with Dave Rizzo, the agriculture representative for the Antelope Valley Integrated Regional Water Management (IRWM) stakeholder group, to see if the agriculture community is willing to provide well data for the Salt Management Monitoring Plan. The Regional Board is interested in getting the agriculture community involved in the development of the SMP. The stakeholder group will continue to send e-mail notifications of the SMP meetings to the Farm Bureau.

Jan Zimmerman will look into providing parcel locations for the Regional Board's concerned cleanup sites identified in the State Water Resources Control Board's Geotracker Database. She will also look into the parcel locations of dairies and evaporation ponds in the Antelope Valley basin. There may be permits issued by the Regional Board for these sites.

The stakeholders were unable to find any stormwater quality data in the Antelope Valley. Jamshed Yazdani mentioned that the City of Lancaster has two wells at their soccer center for domestic water purposes, and he will verify the depth of the wells and if they sample for Title 22 Drinking Standards on a yearly basis. Chris Vidal will verify if Palmdale Water District takes any water quality samples at Littlerock Creek Reservoir. Dave Rydman volunteered to bring up the subject of stormwater sampling at the first Antelope Valley Integrated Regional Flood Management Plan meeting. The City of Palmdale and the City of Lancaster may be able to take samples at their detention basins and Edwards Air Force Base could potentially take a sample at Edwards Dry Lake Bed. Both the cities and Edwards Air Force Base's willingness to take these stormwater samples will be dependent on the level of effort required and the cost associated with collecting and analyzing the data. Stormwater sampling is currently not required in the Antelope Valley by the Regional Board's Municipal Stormwater Permit.

## **Land Use Map**

The stakeholders were provided a draft land use map (*see Appendix A*). The map shows zoning information from Kern County, City of Lancaster, City of Palmdale, and 2006 Los Angeles County Regional Planning websites. Dave Rydman mentioned he can provide the new zoning information for the unincorporated areas of the Los Angeles County. Currently the draft land use map has all the residential zoned areas grouped together. The map will be revised to distinguish between the rural and urban residential areas. The agriculture zoned areas will also be better categorized on the revised draft land use map.

## **Monitoring Wells**

Stakeholders were provided a current and future project location and well site map (*see Appendix B*) that shows all the municipal wells from Palmdale Water District, Rosamond Community Services District, Edwards Air Force Base, and Los Angeles County Waterworks District. The stakeholder group strategically selected several wells for the Salt Management Monitoring Plan based on adequate proximity of the well(s) to current and future projects and an even distribution of available existing wells within the region. The map will be revised to identify all the monitoring wells selected by the stakeholders. It was mentioned that since the water quality data for each agency is being uploaded into the Regional Board's Groundwater Ambient Monitoring and Assessment (GAMA) Program, the database website needs to be straightforward and user-friendly for the public. Jan Zimmerman will verify the accessibility of gathering and analyzing the Antelope Valley's water quality data from the Regional Board's GAMA website.

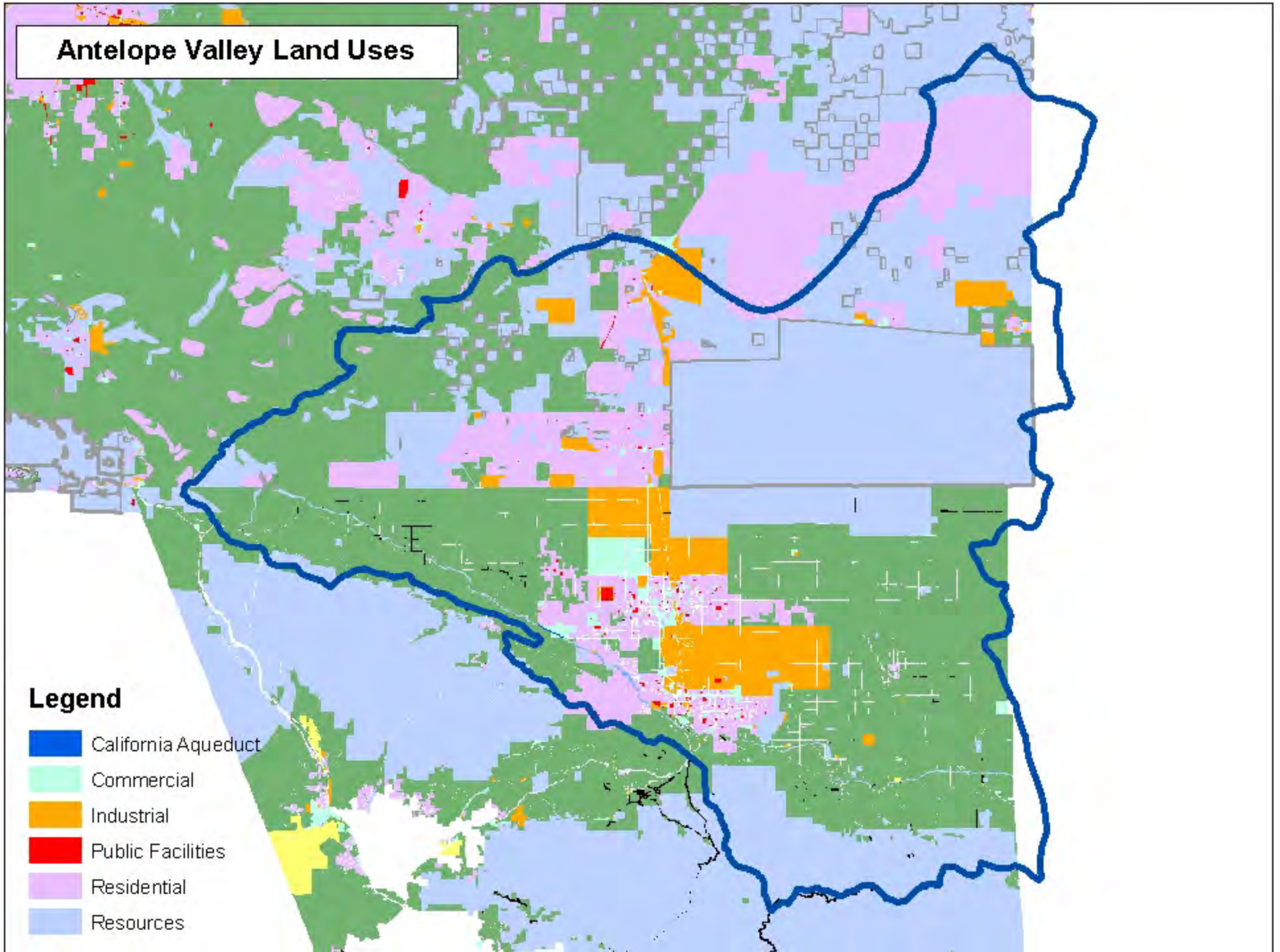
## **Next Meeting**

The next SMP stakeholder meeting is yet to be determined. The Los Angeles County Waterworks District and Los Angeles County Sanitation District will start working on a draft SMP by compiling all the data accumulated to date. A SMP update will be given at the next IRWM stakeholder meeting.

***\*See Attachments Below***

Appendix A – Antelope Valley Draft Land Use Map

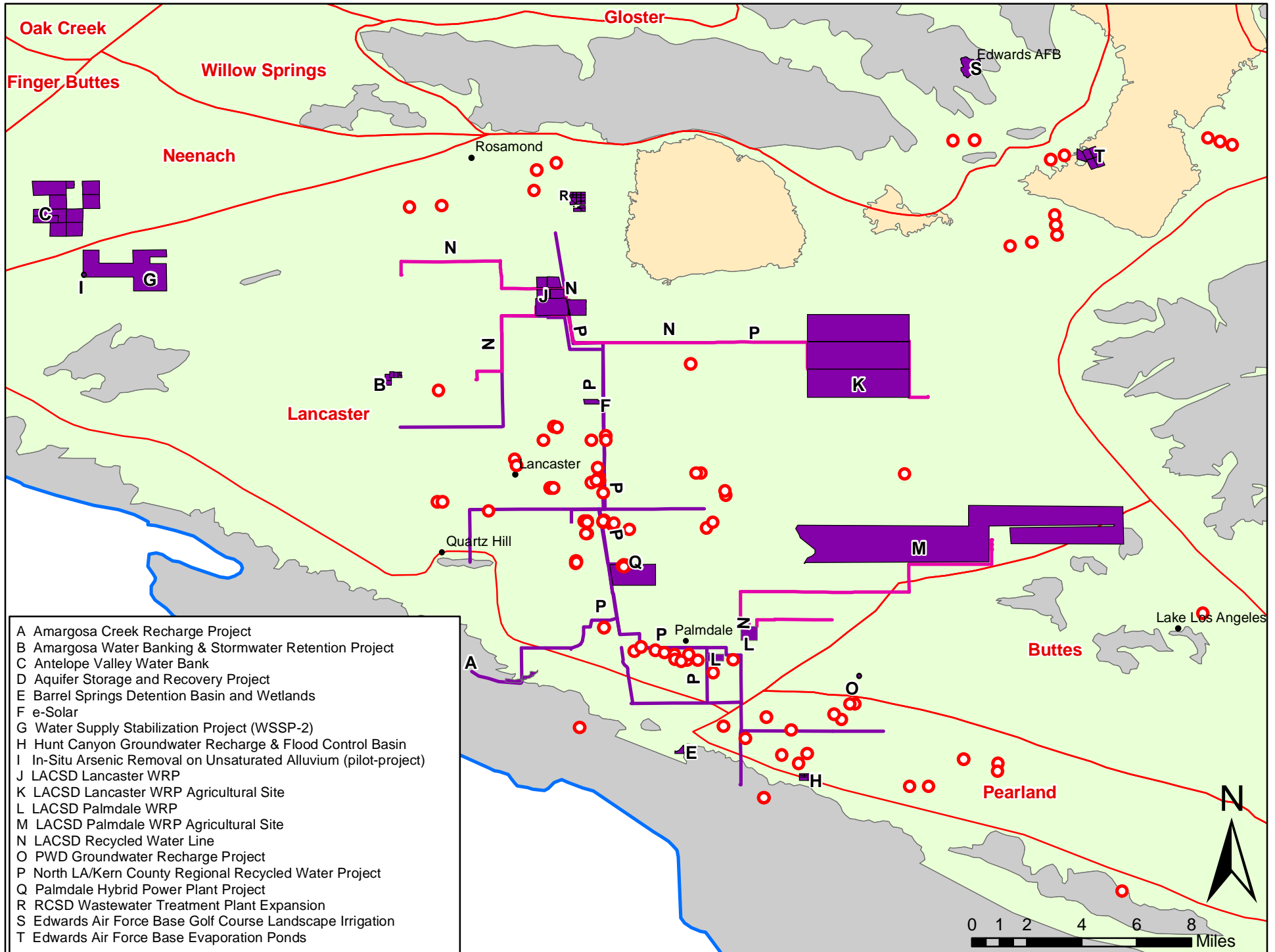
# Antelope Valley Land Uses



## Legend

- California Aqueduct
- Commercial
- Industrial
- Public Facilities
- Residential
- Resources

Appendix B – Map of Projects and Well Locations



- A Amargosa Creek Recharge Project
- B Amargosa Water Banking & Stormwater Retention Project
- C Antelope Valley Water Bank
- D Aquifer Storage and Recovery Project
- E Barrel Springs Detention Basin and Wetlands
- F e-Solar
- G Water Supply Stabilization Project (WSSP-2)
- H Hunt Canyon Groundwater Recharge & Flood Control Basin
- I In-Situ Arsenic Removal on Unsaturated Alluvium (pilot-project)
- J LACSD Lancaster WRP
- K LACSD Lancaster WRP Agricultural Site
- L LACSD Palmdale WRP
- M LACSD Palmdale WRP Agricultural Site
- N LACSD Recycled Water Line
- O PWD Groundwater Recharge Project
- P North LA/Kern County Regional Recycled Water Project
- Q Palmdale Hybrid Power Plant Project
- R RCSD Wastewater Treatment Plant Expansion
- S Edwards Air Force Base Golf Course Landscape Irrigation
- T Edwards Air Force Base Evaporation Ponds