



## What is an EWMP?

The Los Angeles County Flood Control District (District) along with other agencies throughout Los Angeles County are embarking on a new way to address and manage storm water runoff with the Enhanced Watershed Management Programs (EWMPs). The EWMPs will seek and investigate opportunities throughout Los Angeles County to construct multi-benefit projects that will improve storm water quality, water supply, and/or flood control.

## What does the Program EIR Cover?

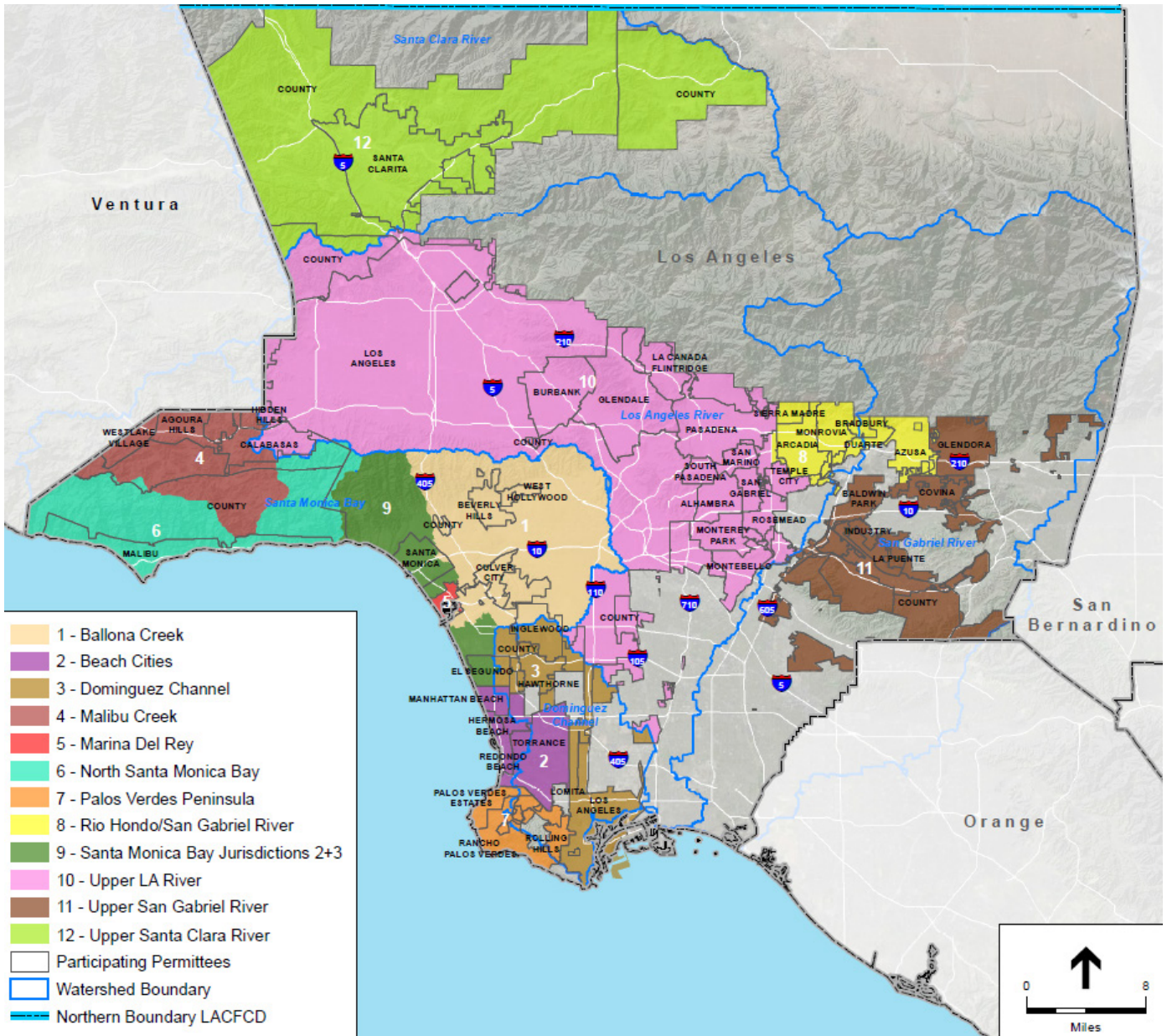
- The Program EIR describes and assesses policy-level commitments required to implement the EWMP.
- These commitments include installation of structural improvements alongside the storm drain infrastructure as well as adoption of non-structural policies aimed at reducing pollutant loading in our urban storm sewer runoff.
- Structural projects range from small, localized drainage improvements to large capture and treatment projects.

## Why is the District Preparing a Program EIR

- The Los Angeles County Flood Control District is preparing a Program EIR to evaluate the proposed EWMPs that are being developed to improve water quality in Los Angeles County.
- The Program EIR is an Advanced Planning Document describing details of the EWMPs being launched to comply with the new MS4 Stormwater Permit.
- It differs from a "Project EIR" in that No Specific Projects will be approved by this Program EIR.
- It will describe future development goals and policies without assessing any individual projects.
- Advance Planning improves public awareness and government transparency and provides for a higher level assessment of policy decisions prior to the consideration of individual projects.

## What is the Schedule?

- January 2015 → The Program EIR will be published for public review on January 21, 2015 at [www.LACoH2Osheds.com](http://www.LACoH2Osheds.com)
- April 2015 → The Los Angeles County Board of Supervisors will consider certifying the Program EIR in April 2015.
- June 2015 → The EWMPs will be submitted to the Regional Water Quality Control Board by June 28, 2015 to comply with the MS4 permit.
- Future → Subsequent environmental analysis will be required for all the storm water quality improvement projects currently under development through the EWMP process.



Map of MS4 Participating Permittees

## What is the Role of the Flood Control District and Other Permittees?

- The Flood Control District is the Lead Agency preparing the Program EIR, evaluating each of the EWMPs within the County. This County-wide approach provides for a comprehensive view that will result in hundreds of water quality projects installed by multiple entities over a diverse geographic area.
- Each Permittee may choose to adopt the Program EIR at its own discretion and is responsible for implementation of individual projects.