



Community Traffic Safety Plan

View Park-Windsor Hills and Ladera Heights

Saturday July 15, 2023

Today's Goals

1

What is the Community Traffic Safety Plan?

2

What have we done so far?

3

Review the draft recommendations

Community Traffic Safety Plan

Background

- Requested by the residents of the View Park-Windsor Hills and Ladera Heights communities.
- Stems from an awareness of increased of traffic fatalities due to unsafe driving behaviors.
- Based on Los Angeles County Supervisor Holly J. Mitchell's motion to complete a Community Traffic Safety Plan in the neighborhood where a deadly collision occurred on La Brea Ave and Slauson Ave on August 4, 2022.

Community Traffic Safety Plan

Goals:

- Provide a framework for identifying, analyzing, and prioritizing roadway safety improvements on community roadways
- Engage with stakeholders and community-based organizations to ensure the plan reflects community needs
- Develop a comprehensive plan that will position County for implementation of roadway improvements



Project Partners



Project Timeline

We are here now



Data Collection

Community Engagement and Outreach

Phase I

Learning about peoples' lived experiences with traffic safety in neighborhood

Phase II

Asking to provide comments on draft elements and draft plan

Network and Program Development

Plan Development

Nov
2022

Mar
2023

May
2023

Jul
2023

Aug
2023

Recap - Existing Conditions

Key Destinations

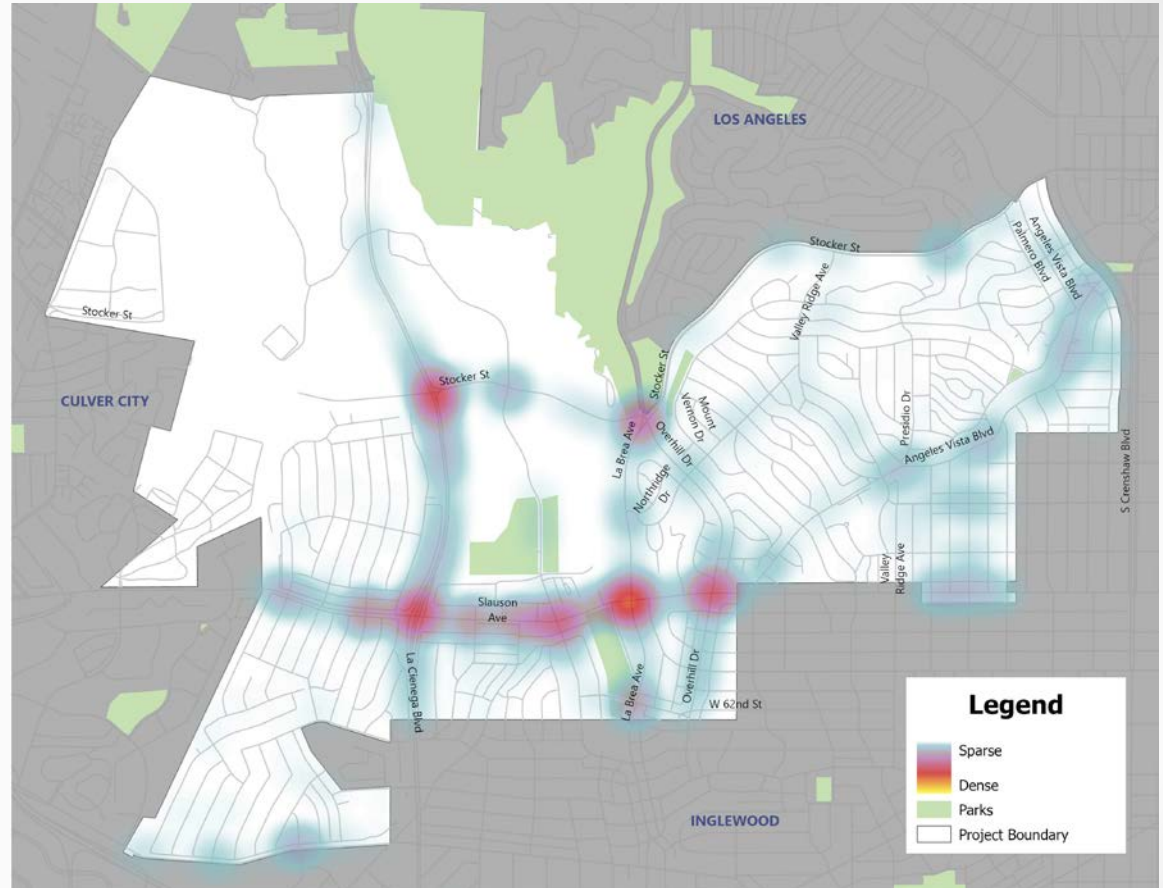
- Schools
- Daycare Centers
- Senior & Community Center
- Library
- Hospital & Medical Clinics
- Worship Centers



Recap - Existing Conditions

Collision History

2017 – 2022



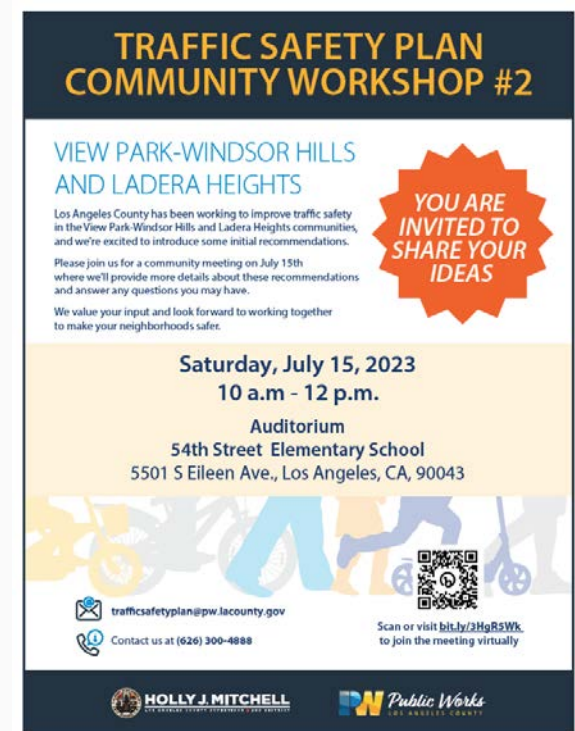
Community Engagement and Outreach

Community Based Organization Meetings

- Total 6 meetings
- United Homeowners Association II
- Ladera Heights Civic Association
- Streets Are For Everyone & Faith for SAFE Streets

Community-Wide Meetings

- Total 2 meetings
- Meeting #1 (March 15, 2023)
- Meeting #2 (Today)



**TRAFFIC SAFETY PLAN
COMMUNITY WORKSHOP #2**

**VIEW PARK-WINDSOR HILLS
AND LADERA HEIGHTS**

Los Angeles County has been working to improve traffic safety in the View Park-Windsor Hills and Ladera Heights communities, and we're excited to introduce some initial recommendations.

Please join us for a community meeting on July 15th where we'll provide more details about these recommendations and answer any questions you may have.

We value your input and look forward to working together to make your neighborhoods safer.

**YOU ARE
INVITED TO
SHARE YOUR
IDEAS**

**Saturday, July 15, 2023
10 a.m - 12 p.m.**

**Auditorium
54th Street Elementary School
5501 S Eileen Ave., Los Angeles, CA, 90043**

trafficsafetyplan@pw.lacounty.gov

Contact us at (626) 300-4888

Scan or visit bit.ly/3HgBSWK to join the meeting virtually

HOLLY J. MITCHELL
THE OFFICIAL COUNTY ATTORNEY FOR THE PEOPLE

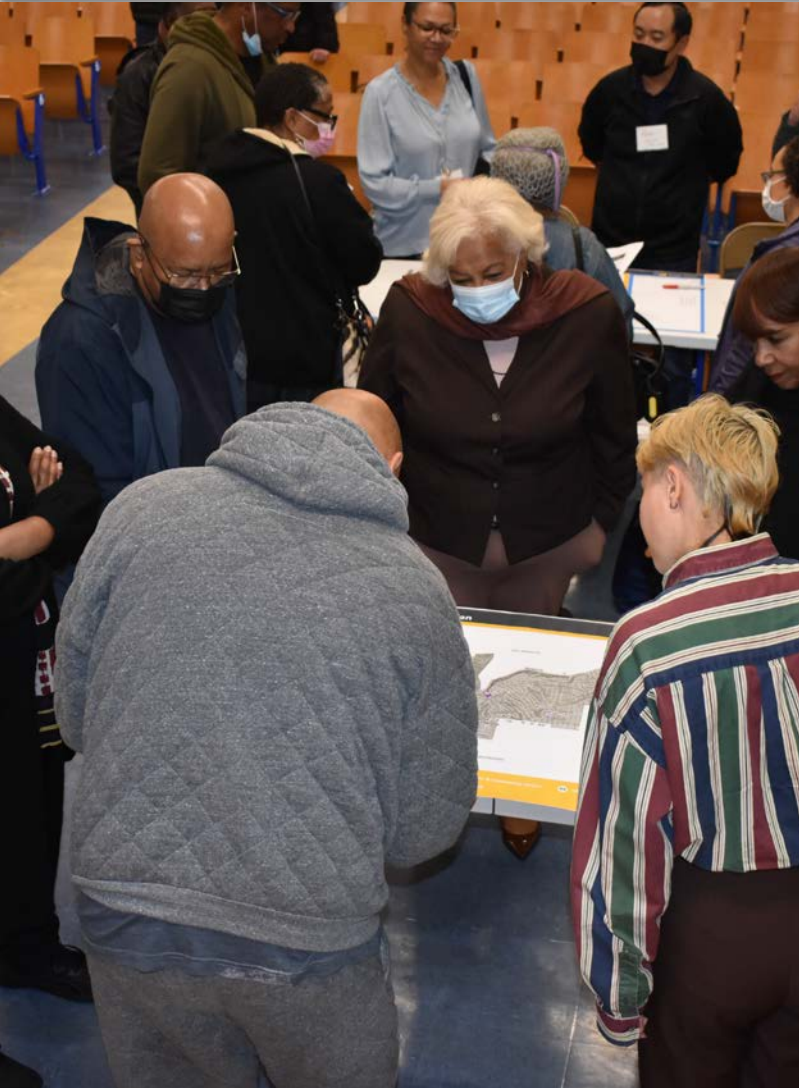
PW Public Works
LOS ANGELES COUNTY

Community Feedback

Major Concerns

- Speeding
- Lack of Traffic Calming Measures
- Cut through traffic
- Blind spots
- Pedestrian safety
 - Poorly maintained sidewalks
 - Missing crosswalks

Community Feedback



Slauson Ave

- There is a request for more street lights along Slauson Ave.
- At the intersection of Slauson Ave and La Cienega Blvd, the close proximity of two traffic lights is causing confusion among drivers.

Angeles Vista Blvd

- Angeles Vista Blvd has several issues, including speeding and blind spots.
- It is suggested to consider extending the road diet along Angeles Vista Blvd.

Community Feedback



Overhill Dr

- Generally speeding is a major issue.
- At the intersection of Overhill Dr and La Brea Ave, there are issues of speeding. The construction of an overpass for pedestrians was recommended to ensure safe access to Kenneth Hann Park.

Stocker St

- Stocker St has multiple issues, including speeding by eastbound vehicles and poorly maintained sidewalks.
- The intersection of Stocker St (Don Tomaso Dr) & Valley Ridge and Stocker St (Don Tomaso Dr) & Presidio are a cause of concern.

Community Feedback

Mt. Vernon Dr

- Several concerns related to speeding and safety.

Valley Ridge Ave

- Speeding on Valley Ridge Ave is observed.
- Sidewalk on Valley Ridge Ave from Stocker St to Mt Vernon Dr is inadequate.

Springpark Ave

- Some drivers are exceeding speed limit when crossing over speed bumps.

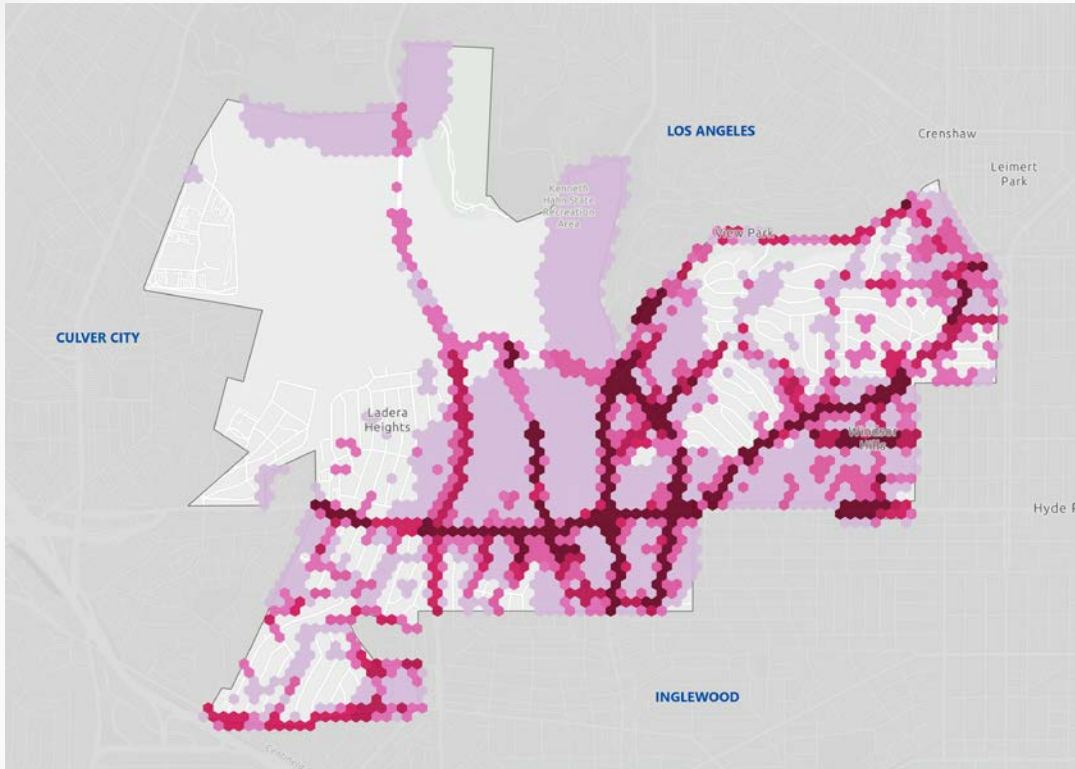
Fairview Blvd

- A lot of cut through traffic impacting the nearby neighborhoods.

Condon Ave

- There is a request for speed bumps.

Prioritization



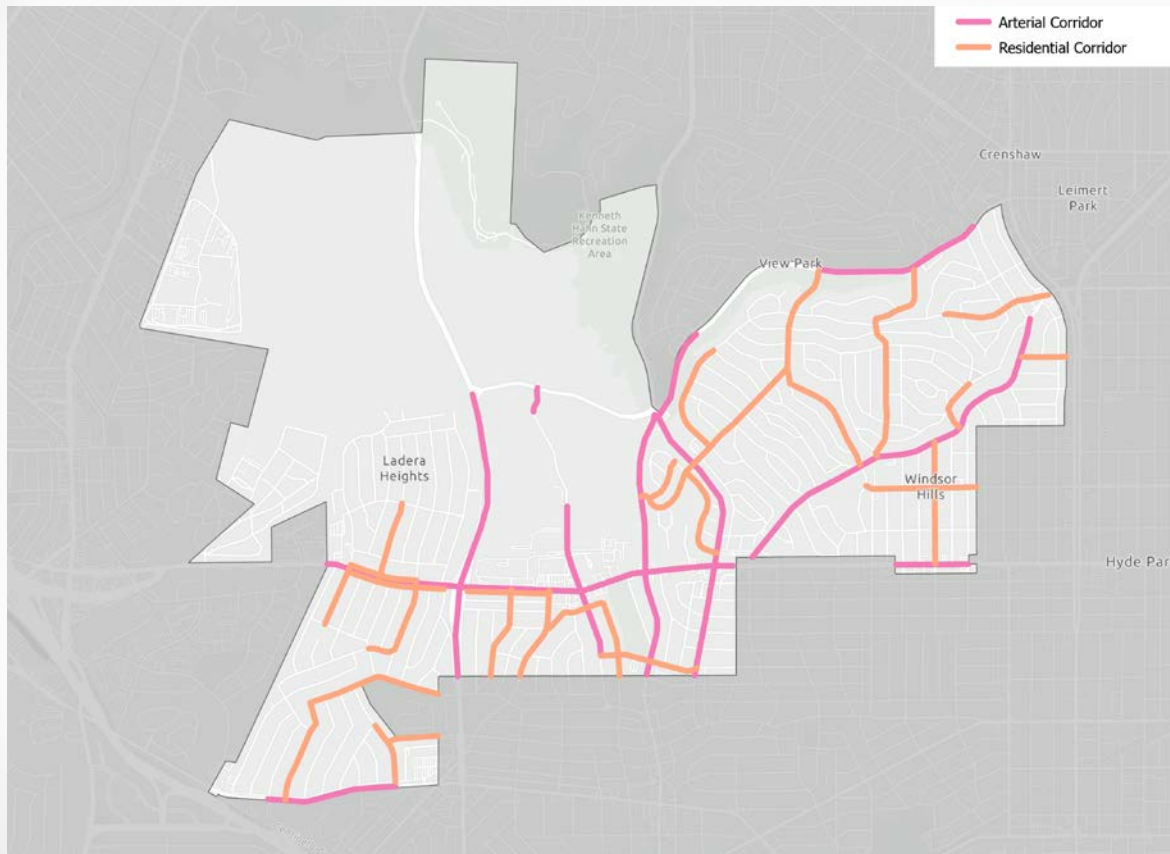
Priority Score

Calculated based on

- Collision History
- Speeding
- Average Daily Traffic
- Proximity to Key Destinations
- Community Input



Prioritization



Priority Corridors

- Arterial Corridor
- Residential Corridor

Priority Corridors

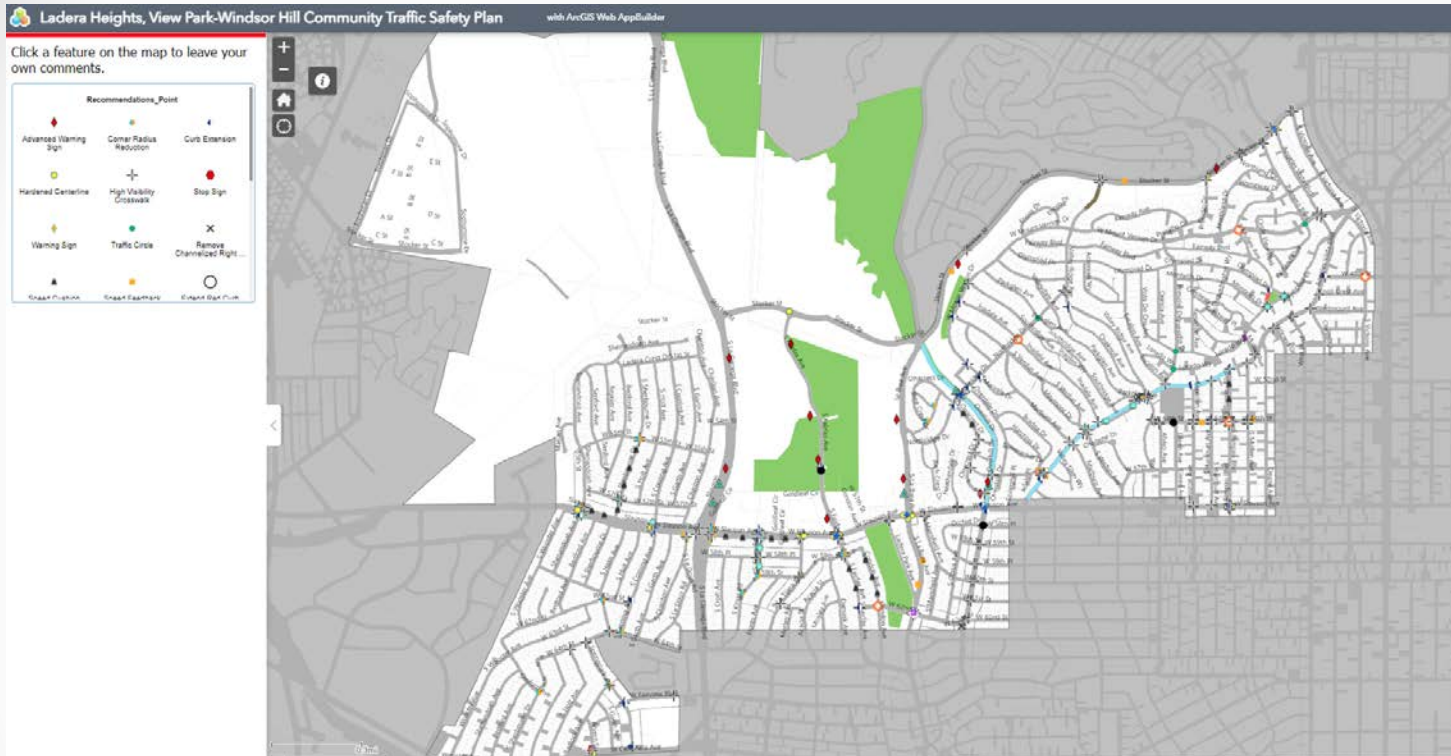
Arterial Corridors

1	La Cienega Blvd	Between Stocker St and south limit
2	Centinela Ave	Between Bedford Ave and Springpark Ave
3	Fairfax Ave	Intersection at Fairfax Ave & Stocker St Between Kenneth Hahn Soccer Fields and south limit
4	La Brea Ave	Between Stocker St and south limit
5	Overhill Dr	Between Stocker St and south limit
6	Slauson Ave	Between west limit and Overhill Dr Between Keniston Ave and Deane Ave
7	Angeles Vista Blvd	Between south limit and Olympiad Dr
8	Stocker St	Between La Brea Ave and Don Lorenzo Dr Between Valley Ridge Ave and Angeles Vista Blvd

Residential Corridors

1	Sherbourne Dr	Between Slauson Ave and 55th St
2	Sherbourne Dr	Between Centinela Ave and 64th St
3	Shenandoah Ave	Between Slauson Ave to 61st St
4	Corning Ave	Between Slauson Ave and 62nd St
5	62nd St	Between Halm Ave to Corning Ave
6	62nd St	Between Fairfax Ave and Overhill Dr
7	64th St	Between Sherbourne Dr and city limit
8	Springpark Ave	Between Centinela Ave and Radlock Ave
9	Fairview Blvd	Between Springpark Ave and city limit
10	Kings Rd	Between Slauson Ave and south limit
11	La Tijera Blvd	Between Slauson Ave and south limit
12	59th St	Between La Tijera Blvd and Fairfax Ave
13	Condon Ave	Between Fairfax Ave and south limit
14	Mioland Dr	Between Onacrest Dr to Northridge Dr
15	Onacrest Dr	Between Northridge Dr and Overhill Dr
16	Northridge Dr	Between La Brea Ave and Valley Ridge Ave
17	Valley Ridge Ave	Between Stocker St and Angeles Vista Blvd
18	Presido Dr	Between Stocker St and Angeles Vista Blvd
19	Mt Vernon Dr	Between Northridge Dr and Parkglen Ave
20	Mt Vernon Dr	Between Homeland Dr and Olympiad Dr
21	48th St	Between Angeles Vista Blvd and east limit
22	Mullen Ave	Between Angeles Vista Blvd to Olympiad Dr
23	Rimpau Blvd	Between Slauson to Angeles Vista Blvd
24	54th St	Between Valley Ridge Ave and Mullen Ave
25	Slauson Ave (north frontage road)	Between Shenandoah Ave and Corning Ave
26	Slauson Ave (south frontage road)	Between Shenandoah Ave and Chariton Ave
27	Slauson Ave (south frontage road)	Between La Cienega Blvd (frontage road) and La Tijera Blvd

Online Interactive Map



bit.ly/3PWdA83

Please scan the QR code or visit the website to access a complete list of proposed treatments. Once there, you can review the treatments and leave your comments or feedback.

Review Draft Recommendations



Please review the draft recommendation boards and provide your valuable feedback.

Contact Information

Contact Information:

Stephen Dykstra

Project Lead

trafficsafetyplan@pw.lacounty.gov

(626) 300-4888