

Rosemead Bl. Complete Street
Improvements Phase I



WELCOME



PROJECT CORRIDOR



Complete Streets

- Guiding principle:
 - Create roadways and related infrastructure that provide safe travel for all users customized to the characteristics of the area the street serves.
- Typical complete street elements:
 - Sidewalks
 - Bicycle lanes (or wide, paved shoulders)
 - Shared-use paths
 - Designated bus lanes
 - Safe and accessible transit stops
 - Frequent and safe crossings for pedestrians

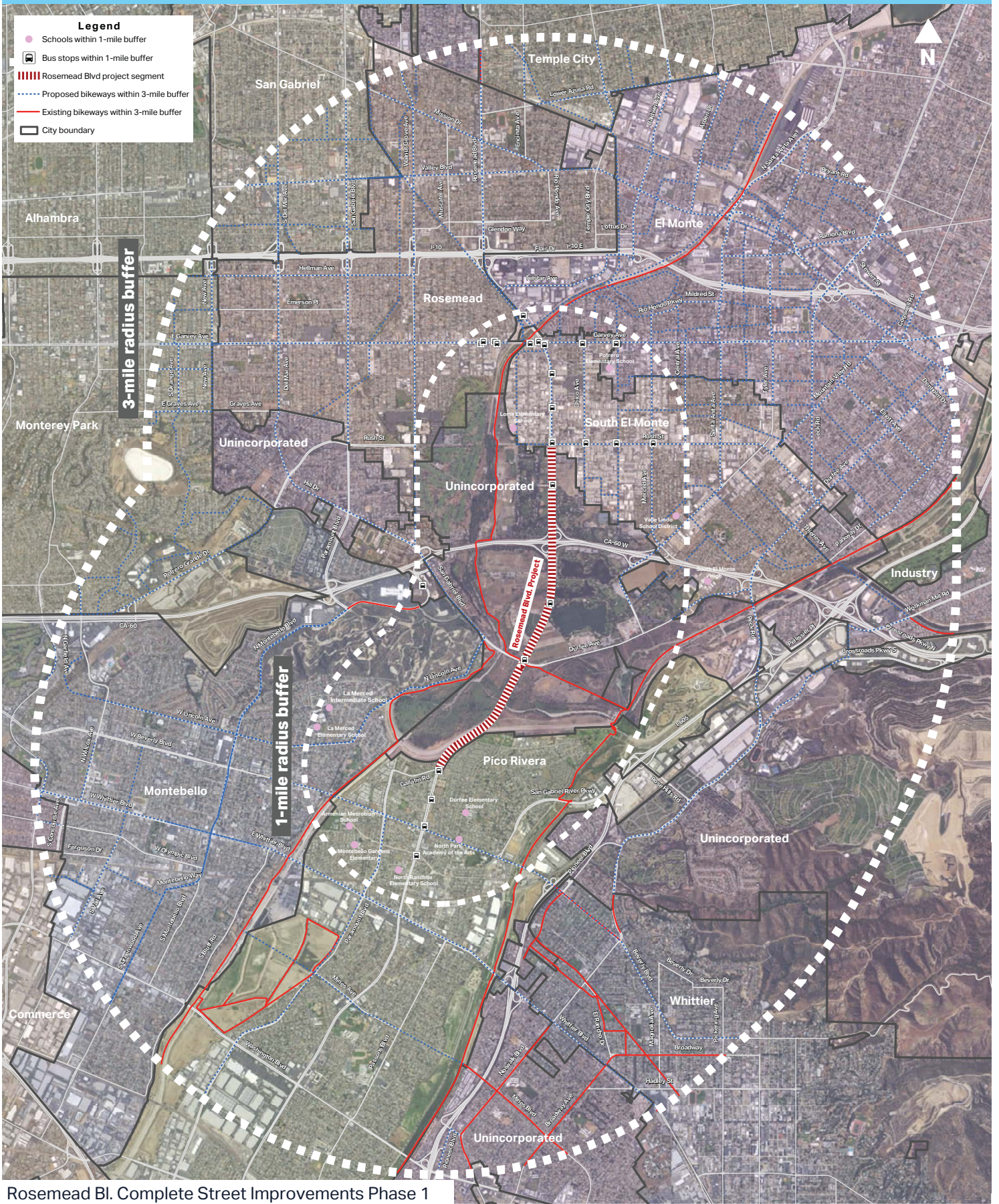


PROJECT GOALS

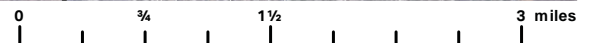
- ▶ Create new bicycle and pedestrian facilities to separate users from vehicular traffic
- ▶ Address infrastructure gaps created by lack of sidewalks
- ▶ Provide a continuous pedestrian network from South El Monte to Pico Rivera
- ▶ Improve access to key destinations
- ▶ Improve wayfinding signage throughout the corridor
- ▶ Enhance access to transit
- ▶ Improve access to nearby bike trails, including the Rio Hondo and San Gabriel River, and the trails within the Whittier Narrows Recreation Area
- ▶ Supports the County's efforts towards a Vision Zero initiative



PROJECT STUDY AREA



Rosemead Bl. Complete Street Improvements Phase 1



Existing Conditions

- Road Conditions

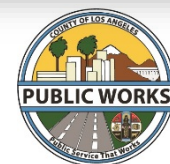
- 120' - 130' of Right of Way
- 39,500 - 46,000 ADT on Rosemead Blvd.
- 109 Accidents 2013 - 2016
 - 71 Injury Accidents
 - 5 Fatalities

- Transit Network

- Metro Bus Lines 266 & 176
- Montebello Transit Lines 40 & 90
- Foothill Transit Line 274

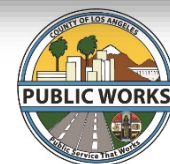
- Bicycle and Pedestrian

- Rio Hondo Bike Path
- San Gabriel River Bike Path
- Whittier Narrows Walking Paths



Existing Conditions

- Destinations
 - Whittier Narrows Recreation Area – 2 million annual visitors
 - American Military Museum
 - Whittier Narrows Park/BMX
 - Legg Lake
 - Triple B Clays
 - Bosque Del Rio Hondo
 - Discovery Center
 - Shops at Montebello
- Strawberry Farm
- South El Monte High School
- Streamland Park



SAMPLE IMPROVEMENTS PHOTO GALLERY

Cycle Tracks



1A - Bollards-separated cycletrack



1B - Curb-separated cycletrack (bi-directional)



1C - Metal barrier-separated cycletrack

Bus Stop Enhancements



2A - Permanent bus stop enhancements



2B - Portable bus stop enhancements

Curb Extensions / Bulb-Outs



3A - Bulb-out / curb extension



(same as 3A)



(same as 3A)

Crosswalks



4A - Continental crosswalk



4B - Block crosswalk



4C - Scramble crosswalk

Signals with Bike / Ped Push Buttons



5A - Bicycle push button



5B - Bicycle traffic signal

Wayfinding Signage



Bicycle Boulevard Identity
6A - Wayfinding signage



(same as 6A)



(same as 6A)

Bike Parking - Fix-it Repair Stations



7A - Inverted-U bike racks



7B - Fix-it bike repair station



7C - Artistic bike racks

Landscaping



8A - Bicycle facility landscaping



(same as 8A)

Lighting



8B - Solar power bicycle facility lighting



(same as 8B)

Conceptual Treatments

- What is a Protected Bike Lane?
 - Must be adjacent to the roadway
 - Must have a vertical buffer between the road and separates pedestrian walkways
 - For the exclusive use of bicyclist



Conceptual Treatments

- Protected Bicycle Lanes
 - Bike Lane Protection Type
 - Painted Bike lanes
 - Bike Maintenance Stations
 - Protected Bike Lane Lighting
 - Bike Racks
 - Bicycle Signals & Bike Specific Pushbuttons



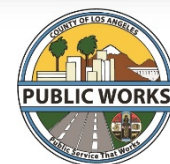
Conceptual Treatments

- Pedestrian Walkways/Interface

- High Visibility Cross Walks
- Scramble Crosswalks
- Intersection Bump- Outs
- Pedestrian Path Lighting

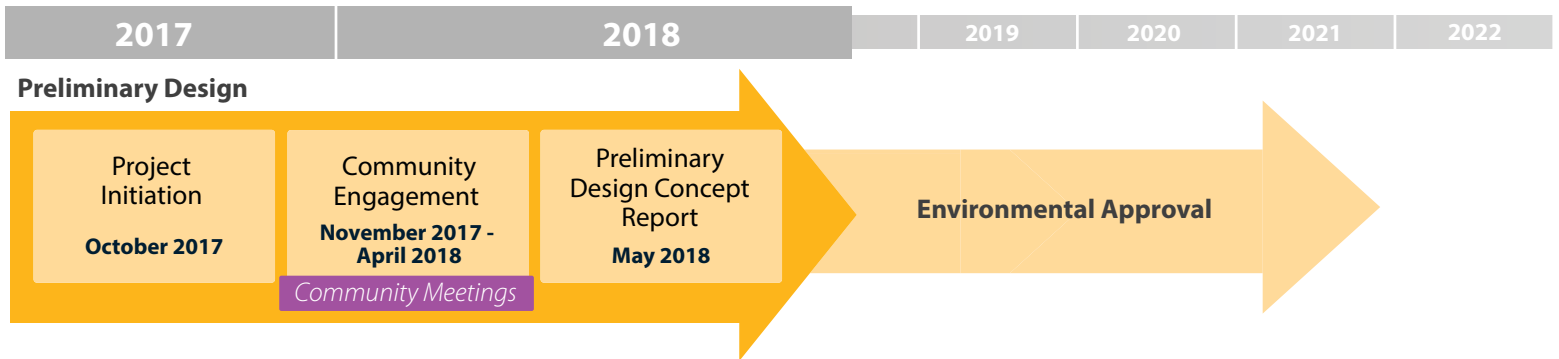
- Landscaping

- Wayfinding & Signage
- Parkway Trees & Plants
- Transit Furniture

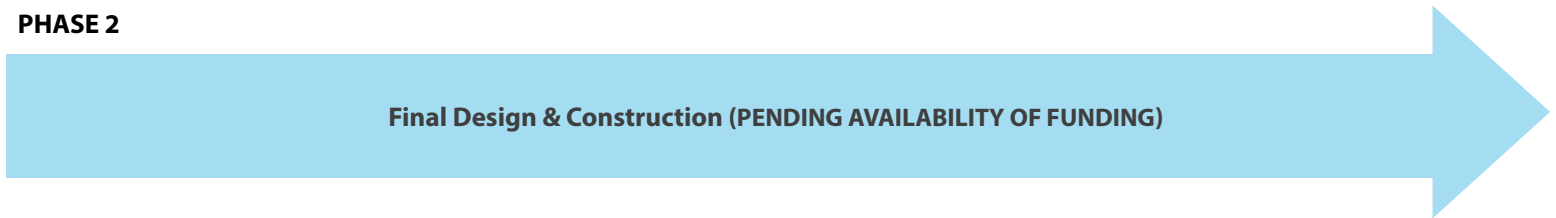


PROJECT SCHEDULE

PHASE 1



PHASE 2



STAY CONNECTED

Martin Reyes, Project Manager
County of Los Angeles



(844) 588-8877



www.dpw.lacounty.gov/go/rosemeadCS

