

# **Baldwin Lake & Tule Pond Restoration Project Frequently Asked Questions**

## **Community & Logistics Questions**

- **Will visitor parking be impacted during construction? If so, how will this be addressed?**
  - Construction related parking will be limited to a small portion of the north end of the Santa Anita Train Depot parking lot. Volunteer and visitor parking near the Train Depot will remain available. If any temporary adjustments are needed, we'll provide clear signage to guide visitors to the best available parking options. However, the Main and South Parking lots will not be impacted during construction.
- **What are the expected haul routes for trucks entering and exiting the Arboretum, and will this cause traffic? How will traffic impacts be minimized?**
  - Haul trucks will enter and exit the Arboretum from Baldwin Avenue through the Santa Anita Train Depot Lot, and access the work area near Baldwin Lake and Tule Pond using designated construction paths. This path keeps haul traffic within controlled service areas and away from main visitor walkways. See Figure 1 below.

# HAUL ROUTE

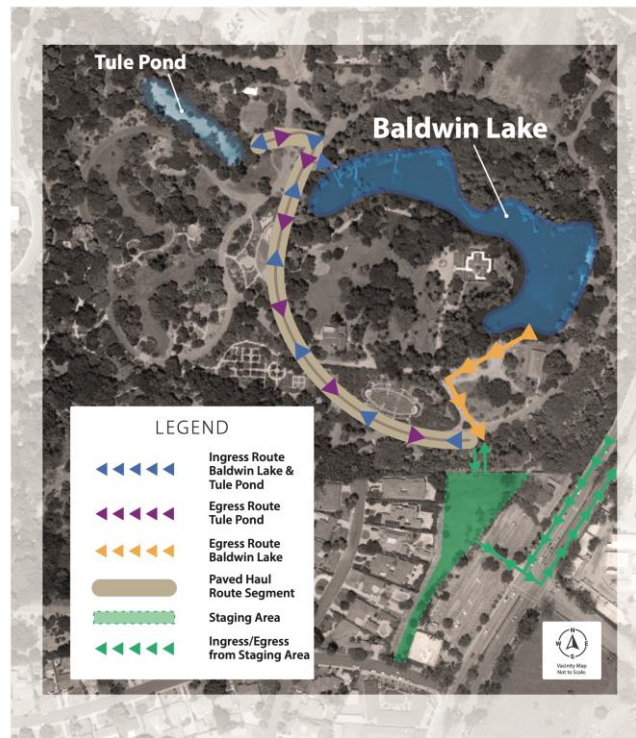


Figure 1.

- **Will there be additional community meetings? And how can I get new updates?**
  - Yes. Additional meetings are planned, and dates will be announced before construction begins. For future updates, please visit our project website or email us to be added to our newsletter list. You can also email us anytime with questions at [BaldwinLakeTulePond@dpw.lacounty.gov](mailto:BaldwinLakeTulePond@dpw.lacounty.gov).
- **Could future public meetings be scheduled at times more convenient for residents who commute from far? (e.g., evenings or weekends)?**
  - We understand this concern and will keep it in mind as we plan future outreach. Our meetings are generally held on weekday evenings, but we'll continue looking for ways to make participation easier for residents.
- **What are the days and hours that construction will take place?**

- Construction is planned to occur Monday through Friday, generally between 7:00 a.m. and 4:00 p.m. No weekend or nighttime construction is currently planned.
- **How will the walking experience inside the Arboretum be affected during construction? Will I need to alter my normal route, and how do I know where not to travel?**
  - Some walking paths may be temporarily closed or rerouted. Signs will be posted along the pathways to guide visitors, and a haul route map will be available to help plan your walk. Visitors will still have full access to all areas of the Arboretum, and most routes will remain open throughout construction.

## **Historic & Cultural Considerations**

- **Will the historic drain outlet near the Adobe be properly accounted for in the wall design?**
  - Yes, it has been accounted for in the design. The wall will have an opening for the drain outlet.
- **Will an archaeologist be present during construction to address any historical artifacts discovered? What happens if a historical artifact is discovered during construction?**
  - Yes, there will be an archaeologist on site. Any discovery will be documented and then final ownership determination will be decided in consultation with LA County Public Works, LA County Parks, the consulting Tribe(s), and the qualified archaeologist.
- **Has there been communication with the native tribe groups about this project? What cultural resource protection measures are included?**
  - Yes, we have been in consultation with the appropriate tribes; including the Gabrielino Tongva Indians of California and Gabrieleño Band of Mission Indians – Kizh Nation. A tribal monitor from each Tribe will be present/onsite for ground-disturbing activities. For detailed cultural resource protection measures, please see the California Environmental Quality Act (CEQA) document located on Project website for further details.
- **Will the rocks and boulders from the historic wall be reused?**
  - When possible, historic rocks and boulders will be salvaged and incorporated into the project to maintain the site's character.

## Environmental & Technical Questions

- **What is the total amount of soil being removed, and are there options for reuse or beneficial disposal of sediment?**
  - 26,000 cubic yards in total (Lake = 20,000 cubic yards, Pond = 6,000 cubic yards) will be removed. The Lake quantity may increase to 45,000 cubic yards if the additive alternative option is awarded.
  - All contaminated Lake and Pond sediment will be disposed of to the appropriate offsite disposal facilities. Any excavated soil, outside of Lake and Pond shoreline, deemed adequate for reuse will be utilized where appropriate during construction.
- **Will additional water be provided to the Lake/Pond after restoration, and how will water quality be maintained?**
  - Baldwin Lake will have a potable water line to add water into the lake, however, the installation of the lake liner will greatly reduce the amount of potable water needed to fill the Lake during the dry periods.
  - The Project is designed to naturally clean stormwater and dry weather flows before they reach the Arcadia Channel. Stormwater will first enter Tule Pond, where slower-moving water allows dirt and other particles to settle at the bottom. New wetland plants along the Pond will help filter the water, with some species even removing contaminants through natural processes before the water flows into Baldwin Lake. In the Lake, deeper water and healthy microorganisms will continue improving water quality, supported by a new aeration system that keeps the water moving and oxygenated. To reduce algae, an ultrasonic algae remediation system will gently break up algae before it grows.
- **What mitigation measures from the California Environmental Quality Act (CEQA) document will be implemented for habitat protection, dust/noise control, and cultural resources?**
  - Biologists will protect birds, turtles, trees, and aquatic wildlife through surveys, onsite monitoring, and safe relocation when needed. Dust will be mitigated by watering work areas, covering trucks, and following all required Federal, State, and County controls. Construction will be limited to weekday daytime hours. A temporary sound barrier will be installed at the construction staging area to further reduce construction noise levels. Tribal monitors will be present during ground-disturbing activities, and work will halt in the immediate area if cultural resources or human remains are encountered, pending appropriate notification and treatment in coordination with the Tribes.

- **I live in the neighborhood near the Arboretum, Will there be a lot of dust and noise during construction?**
  - Any dust and noise will be mitigated through mandatory watering, covered trucks, and limited work hours. The California Environmental Quality Act (CEQA) analysis found these impacts to be less than significant with controls in place.
- **What will happen to migratory birds, turtles and fish?**
  - A biologist will check for nests and protect any birds during construction, and turtles will be safely relocated before work begins. Fish and other aquatic animals will be protected with screened pumps and specialists on-site, and the project will improve their habitat once complete.
- **Will dust travel into adjoining neighborhoods? Will pools be affected by excessive dust? If we notice excessive dust, who do we contact? Is this the same number for all concerns or general point of contact?**
  - Dust controls are designed to keep dust from traveling off-site. If dust becomes a concern, residents can call the construction contact number that will be provided in advance notices. You may also email [BaldwinLakeTulePond@dpw.lacounty.gov](mailto:BaldwinLakeTulePond@dpw.lacounty.gov) on any dust concerns.
- **How noisy can we expect construction to be?**
  - Typical construction noise may be similar to loud yard equipment but is limited to weekday daytime hours. Noise will stay within construction boundaries with the aid of noise control measures.
- **Is there a potential for hazardous materials at the construction site? Is it dangerous for visitors to the Arboretum, the surrounding neighborhoods? Should we be concerned about the local water supply and air quality?**
  - Sediment contaminated with lead will be removed and taken to a proper hazardous-waste facility, and the rest of the material is non-hazardous and will be handled normally. The California Environmental Quality Act (CEQA) report found no danger to visitors, neighbors, drinking water, or air quality because all materials are contained and managed under strict guidelines.
- **Will there be any smell from the project construction?**
  - Any odors from equipment or exposed soil will be temporary, limited, and not expected to affect visitors or nearby homes. Some brief odors may occur during active work, but will be managed by required regulatory guidelines and best construction practices.

## **Construction & Design Details**

- **What methods will be used for sediment removal?**
  - Sediment will be removed using standard excavation methods. After the Lake and Pond are drained and the sediment has dried, excavators and loaders will remove the material and load it into haul trucks for off-site disposal in accordance with all regulatory requirements.
- **How will dewatering be managed during excavation?**
  - If necessary, dewatering will be managed using pumps and filtration equipment that remove water from the Lake and Pond so sediment can be safely excavated. The process uses temporary tanks, filters, and other treatment systems to ensure water is properly managed before discharge. Treated water will then be routed into the Arcadia Wash.
- **What are the specifications for the lake liner and aeration system?**
  - Lake liner is about 1.5 feet thick, will consist of multiple layers including an impermeable bentonite clay layer. Aeration system will consist of piping placed on the Lake bottom while connected to several diffusers spaced out to aerate and recirculate water in the Lake.
- **How will the realigned outlet and storm drain improvements integrate with existing infrastructure?**
  - Realigned Old Ranch Road Drain will now flow into Tule Pond.
- **What standards will guide the restoration of the retaining wall?**
  - Guidelines for the restoration of the retaining wall can be found in the mitigation section of the California Environmental Quality Act (CEQA) document.
- **What are the truck trips expected per day?**
  - Truck activity will vary by phase. On average, about 10 truck trips per hour are expected, with peak periods reaching approximately 100–130 truck trips per day during the main sediment-hauling phase.
- **Will the road where the truck will be traveling be damaged? If so, will County fix the road after the project is completed?**
  - Trucks must follow approved haul routes and weight limits designed to prevent road damage, and if any damage does occur to Arboretum, interior roads because of the Project, the Project itself will repair the affected roads once construction is finished.
- **What is the anticipated construction schedule and major milestones?**
  - Construction is expected to begin in July 2026 after permits are finalized and will continue through October 2027. Work will occur in phases, including site preparation, sediment removal, historic wall rehabilitation, habitat restoration, and final landscaping.

- **How will staging and access routes be managed to minimize disruption to Arboretum visitors?**
  - All construction staging and truck access will stay within designated areas away from main visitor paths, as much as possible. Clear signs and temporary barriers will help keep visitors safely separated from work zones. Please see Figure 1 above.
- **How confident are you that the project will be completed before summer Olympics in 2028?**
  - The project schedule is planned with enough time and contingency to finish before the 2028 Olympics, and the County is committed to keeping the project on track.
- **What happens to construction schedule if it rains?**
  - During rain events, certain activities may pause for safety and to prevent water quality impacts. The contractor will resume work as soon as conditions are safe.

## **Budget & Funding**

- **How much is this Project going to cost?**
  - The total Project cost is estimated at \$64 million.
- **Is the City of Arcadia involved in the Project? Did the City contribute funding for the project?**
  - The project is led by the County, and while the City of Arcadia is involved with the permitting process, it is not a funding source for the project. All project costs are covered through County-managed funding.
- **Will improvements cause Arboretum entrance fees to increase?**
  - From time to time, Arboretum entrance and membership fees are adjusted, however, any future adjustments would not be the result of this Project.