

**LOS ANGELES COUNTY
DEPARTMENT OF PUBLIC WORKS**

BENCH MARKS



PALMDALE QUAD

**2010 ADJUSTMENT
2010 BASELINE
NAVD 88 DATUM FOOT/METER**

PREFACE
Antelope Valley

The Department of Public Works level net is composed of more than 1,700 miles or 2720 kilometers of levels supporting in excess of 9,000 benchmarks. Previously when a major readjustment of the net was undertaken, to emphasize the complete break with previous elevations, the CY, CG, and CL, series benchmarks were re-labeled DY, DG, and DL, respectively. Beginning in 1993 the Baseline readjustment year will be indicated on Baseline BM's, as indicated below (*). Henceforth all BM numbers will be labeled as a Y, G, or L series that will no longer indicate the major adjustment year.

To facilitate the adjustment, indexing and distribution of the adjusted values of the net, the county territory was divided into 33 quads or areas. For the identification purposes each quad was given a name (i.e. "Rosemead", "La Mirada", and "Santa Fe"...etc). When benchmarks and elevations in the quad are used, the name of the bench and quad must be stated in the description, i.e.:

(*)	BASELINE	90.057	L&BR IN CTR OF CB RET @ NE COR	Y 9191
	(1990)	295.461	LA HABRA BLVD & VALLEY HOME AVE	

It is expected that this general adjustment will for the most part remain sound for 8 to 10 years. Updating constrained adjustments will continue in the future. When a quad is readjusted, new elevations will be published and the date of readjustment will be noted in the benchmark description. Two benchmarks with different adjustment dates will not normally agree with each other.

The basic accuracy of the net is reflected by an indicated field probable error of ± 0.017 feet per mile (4mm per kilometer) of leveling as determined from conditions of closure. However, many years of experience in vertical control in the greater Los Angeles basin and Antelope Valley indicates that because of varying degrees of subsidence and heaving, the true datum is recovered only by obtaining substantial agreement of a number of benchmarks.

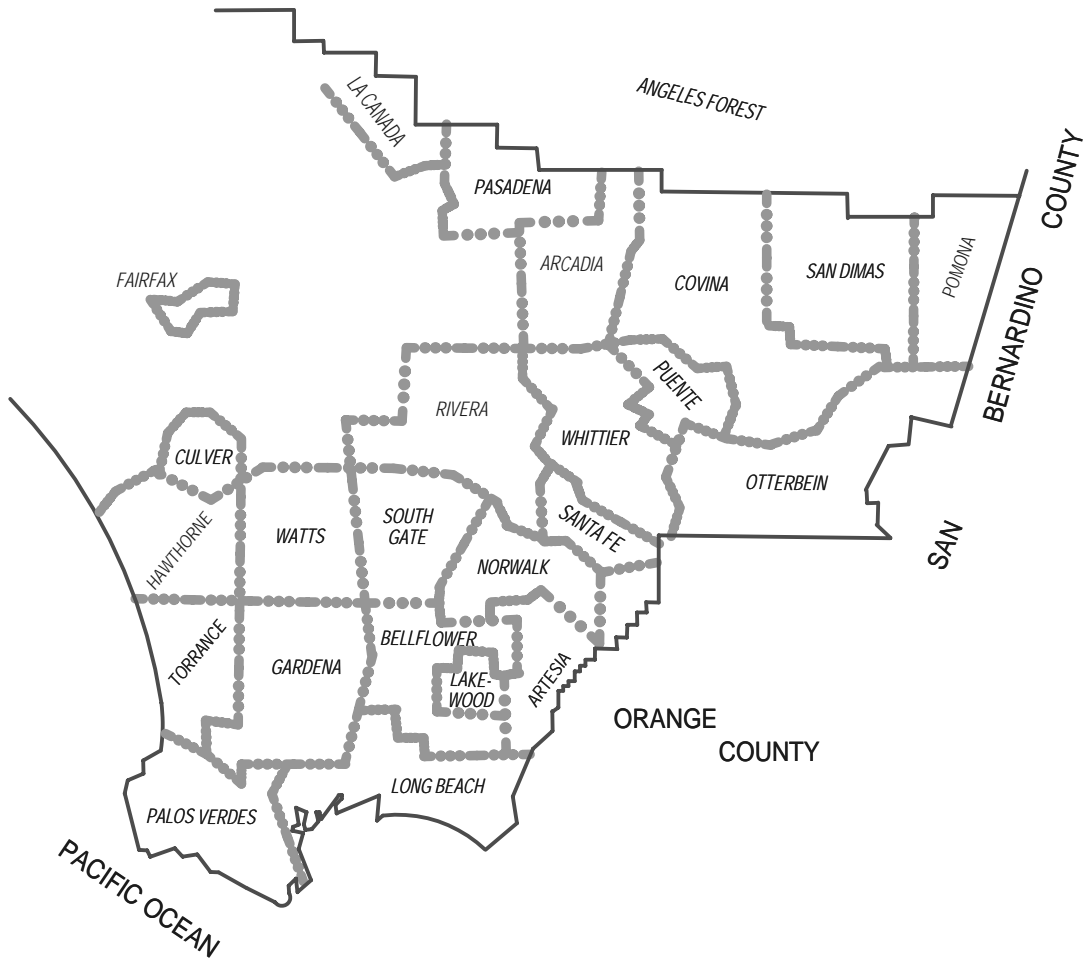
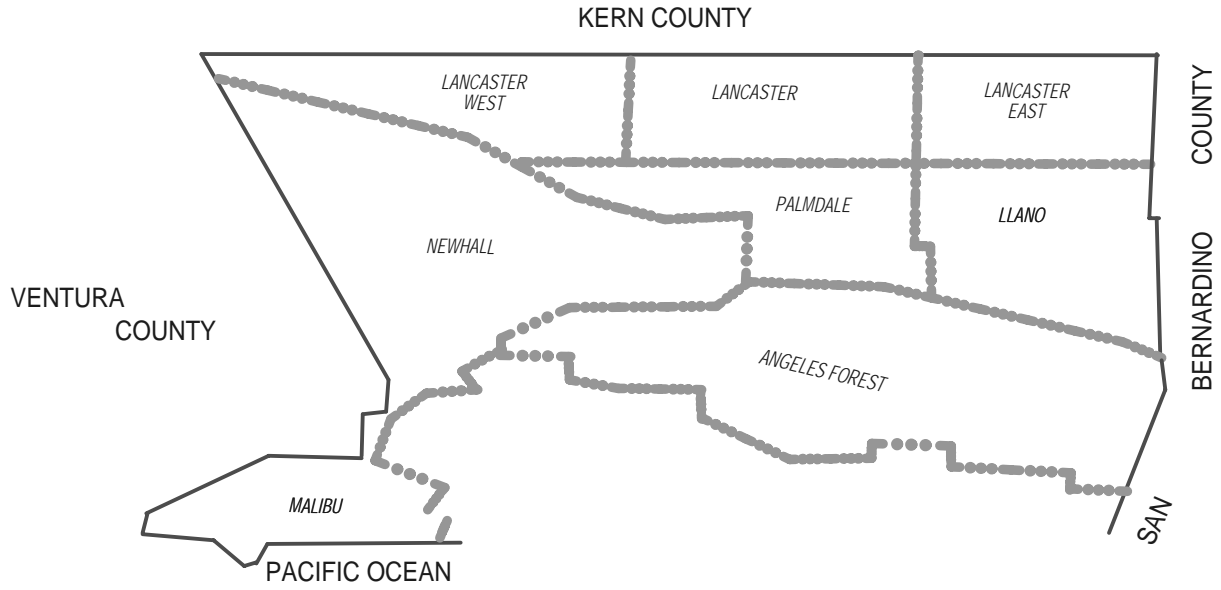
The users of this network of benchmarks are invited to assist in its maintenance by notifying this department of cases of obliteration, apparent mistakes in descriptions or elevations, and the disturbance of benchmarks.



Datum: North American Vertical Datum of 1988 (NAVD88)

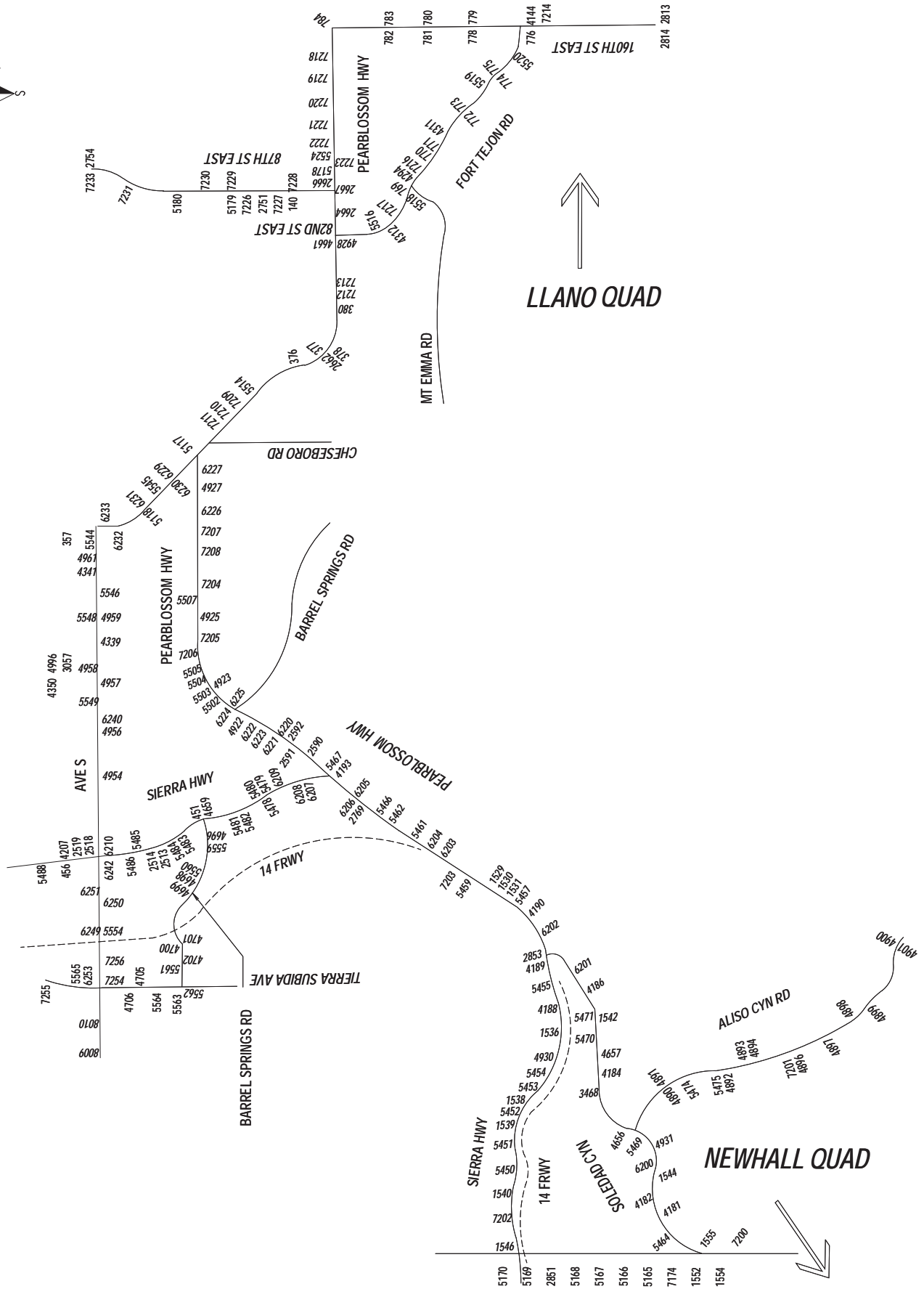
Note: NAVD 1988 minus approximately 3.00 feet (90 cm) equals NGVD 1929 Datum. For more accurate equations at individual benchmarks refer to previous publications.

QUAD COVERAGE INDEX MAP





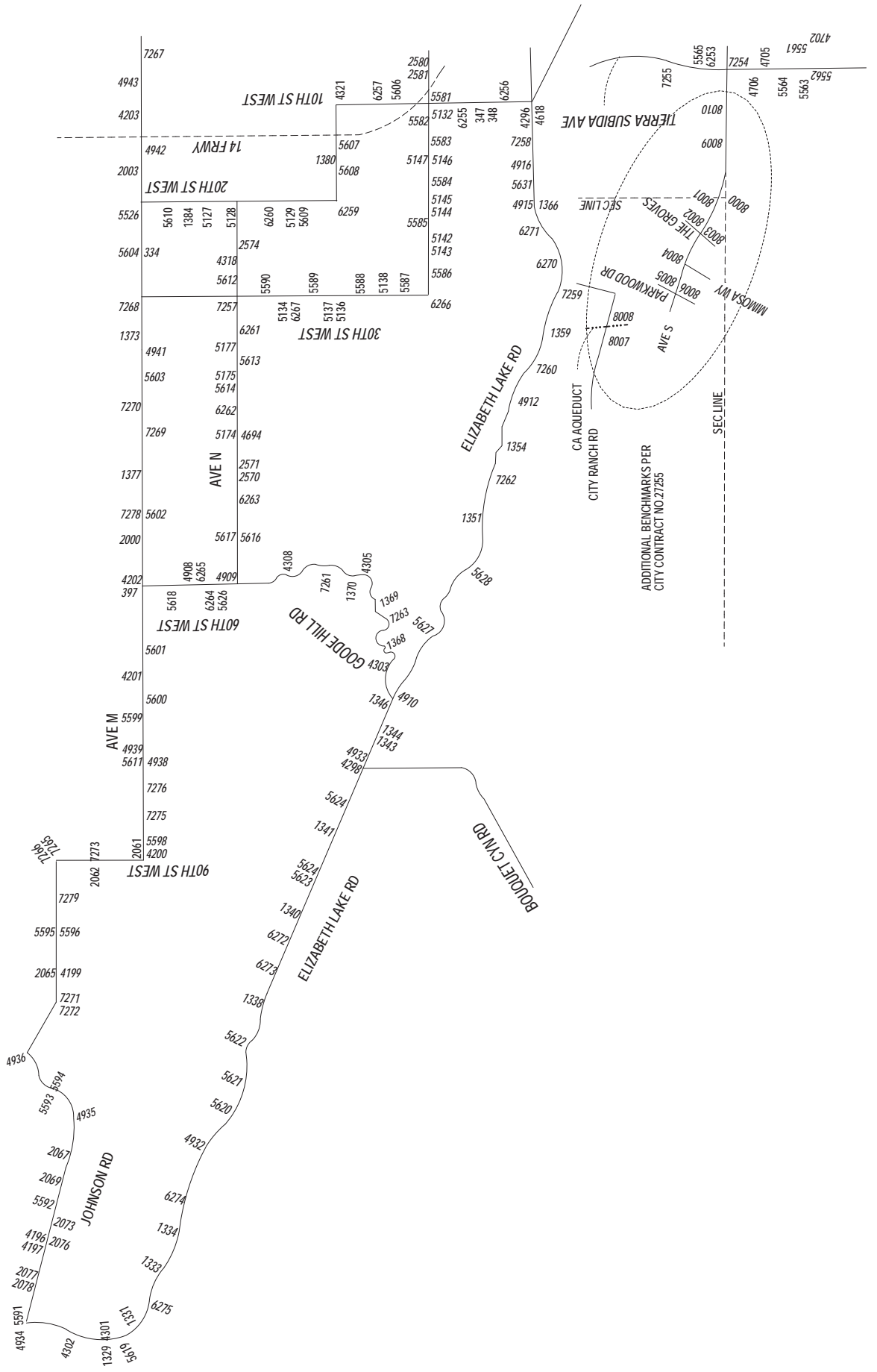
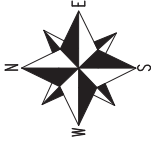
PALMDALE QUAD

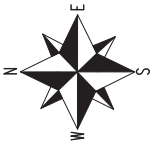


LLANO QUAD

NEWHALL QUAD

PALMDALE QUAD

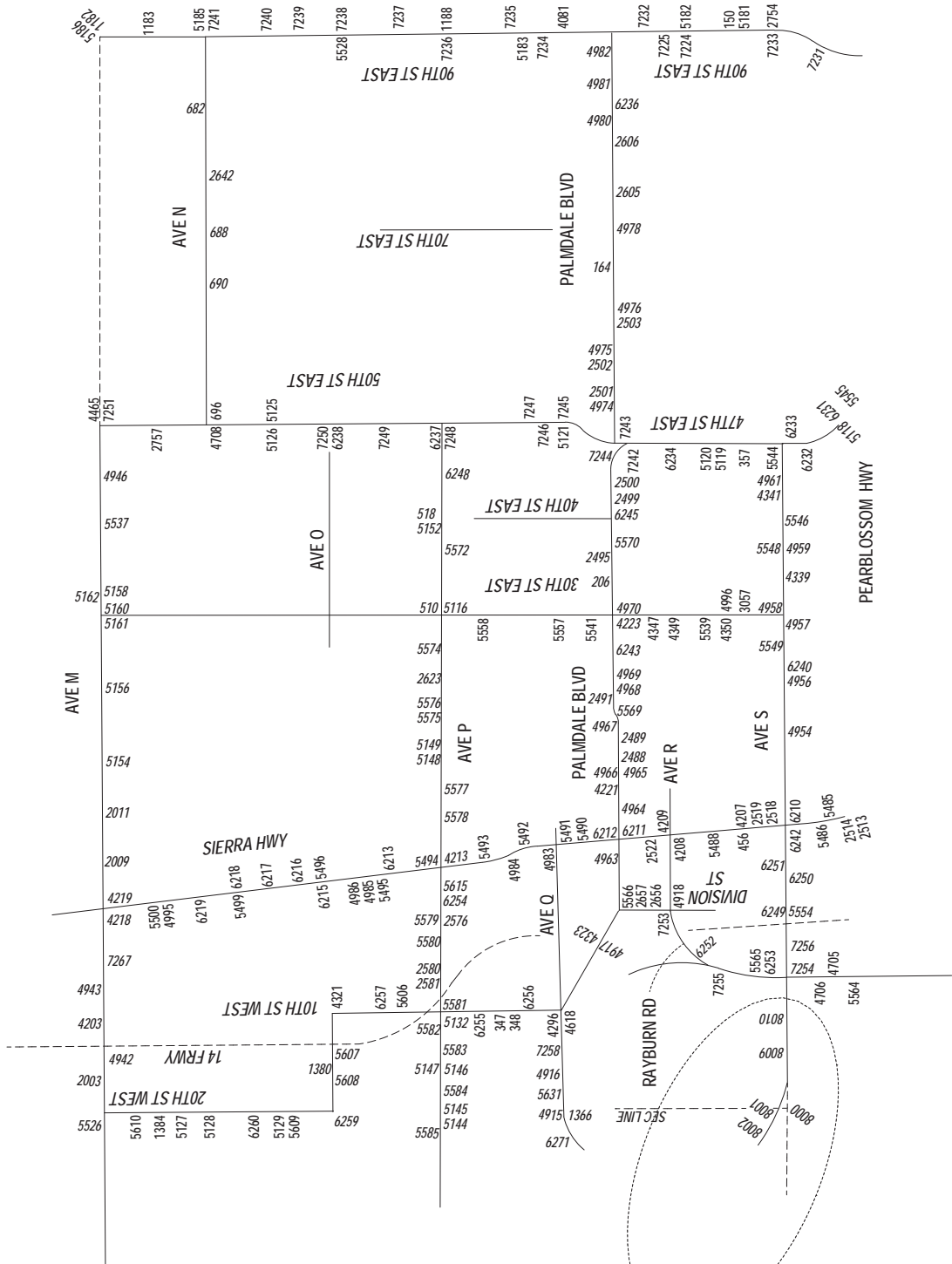




LLANO QUAD

PALMDALE QUAD

LANCASTER QUAD



Abbreviations used in Benchmark Descriptions

Abbreviations	Descriptions	Abbreviations	Descriptions
<i>ABUT</i>	Abutment	<i>LT</i>	Lead and Tack
<i>ALG</i>	Along	<i>LACE</i>	Los Angeles City Engineer
<i>ANG PT</i>	Angle Point	<i>LACS</i>	La County Engineer
<i>B/W</i>	Back of Walk	<i>LAFC</i>	La County Flood Control
<i>BCR</i>	Begin Curb Return	<i>L&BN</i>	Lead and Bench Nail
<i>BC</i>	Begin Curve	<i>L&BR</i>	Lead and Brad
<i>BLDG</i>	Building	<i>L&N</i>	Lead and Nail
<i>BM</i>	Benchmark	<i>L&SPK</i>	Lead and Spike
<i>BT SPK</i>	Boat or Bolt Spike	<i>L&T</i>	Lead and Tack
<i>BR CAP</i>	Brass Cap Monument	<i>MCR</i>	Middle Curb Return
<i>C B</i>	Catch Basin	<i>MKD</i>	Marked
<i>CTR</i>	Center	<i>MC</i>	Middle Curve
<i>C/L</i>	Centerline	<i>MON</i>	Monument
<i>C/L INT</i>	Centerline Intersection	<i>N/O</i>	North of
<i>C/L PROD</i>	Centerline Produced	<i>NR</i>	Near
<i>CONC</i>	Concrete	<i>OPP</i>	Opposite
<i>COR</i>	Corner	<i>PI</i>	Point of Intersection
<i>COE</i>	Corps of Engineers	<i>PK&W</i>	PK Nail and Washer
<i>CULV</i>	Culvert	<i>P/L</i>	Property Line
<i>CYN</i>	Canyon	<i>POST</i>	Point on Simi-Tangent
<i>CB</i>	Curb	<i>PP</i>	Power Pole
<i>CS MON</i>	Co. Eng. Monument	<i>PVMT</i>	Pavement
<i>CT SPK</i>	Cut Spike	<i>PROD</i>	Produced
<i>DPW</i>	Dept of Public Works	<i>RD</i>	Road
<i>DR</i>	Driveway	<i>RDBM</i>	Road Dept Benchmark
<i>E/O</i>	East of	<i>RDBM TAG</i>	Road Dept Benchmark Tag
<i>ECR</i>	End Curb Return	<i>RR</i>	Railroad
<i>EC</i>	End Curve	<i>R/W</i>	Right of Way
<i>ENT</i>	Entrance	<i>SDMH</i>	Storm Drain Manhole
<i>FL</i>	Flow line	<i>SMH</i>	Sewer Manhole
<i>FTG</i>	Footing	<i>SPK</i>	Spike
<i>FRWY</i>	Freeway	<i>ST&W</i>	Spike Tin and Washer
<i>F/W</i>	Front of Walk	<i>S/O</i>	South of
<i>GAR</i>	Garage	<i>TP</i>	Telephone Pole
<i>HDWL</i>	Head Wall	<i>USC&GS</i>	US Coast and Geodetic Survey
<i>HSE</i>	House	<i>USGS</i>	US Geological Survey
<i>HWY</i>	Highway	<i>WK</i>	Walk
<i>INT</i>	Intersection	<i>W/O</i>	West of
<i>IP</i>	Iron Pipe		

QUAD YEAR	ELEV FOOT/METER	DESCRIPTION	BM NUMBER
BASELINE (2010)	2,863.462 872.786	RDBM TAG IN N SIDE CONC FTG OF 2" FENCE POST 135' W/O C/L 87TH ST E & 25' S/O C/L AVE U	L 140
BASELINE (2010)	2,688.457 819.444	RDBM TAG @ SW COR OF CONC SLAB 30' N/O C/L AVE R-8 & 45' E/O C/L 90TH ST E	L 150
PALMDALE (2010)	2,638.830 804.318	CS MON 2" UP 46' N/O C/L PALMDALE BLVD & 46' E/O C/L 65TH ST E MKD (RE 63) MKR 2' N MON	L 164
PALMDALE (2010)	2,603.814 793.645	RDBM TAG N CB (SERV RD) 1.5' W/O BCR @ NW COR PALMDALE BLVD & 32ND ST E 78 N & 48' W/O C/L INT	L 206
BASELINE (2010)	2,521.114 768.438	CS MON IN WELL 1.5' DN @ C/L INT AVE M & 25TH ST W MKD (1/4 COR 32,5,T6N,R12W)	L 334
PALMDALE (2010)	2,689.854 819.870	RDBM TAG IN N CB 49' W/O BCR @ NW COR BEECHDALE DR & 10TH ST W 130' W & 20' N/O C/L INT	L 347
PALMDALE (2010)	2,689.843 819.867	RDBM TAG IN S CB 1' W/O BCR @ SW COR BEECHDALE DR & 10TH ST W 20' S & 76' W/O C/L INT	L 348
PALMDALE (2010)	2,672.789 814.669	RDBM TAG IN E CB 1' S/O BCR @ SE COR 47TH ST E & AVE R-12 40' E & 56' S/O C/L INT	L 357
PALMDALE (2010)	2,863.794 872.887	RDBM MON IN WELL 46' NE/O C/L PEARBLOSSOM HWY & 518' NWLY STOKELY RD 115' NLY PP #4145772E MKR POST 3' S/O MON 9' N/O N EDGE PVMT 161' SE/O PALMDALE CITY LIMIT SIGN	L 376
PALMDALE (2010)	2,888.897 880.538	RDBM TAG IN W ABUT OF BRIDGE #53-303 OVER LITTLE ROCK CREEK 39' N/O C/L PEARBLOSSOM HWY	L 377
PALMDALE (2010)	2,889.282 880.656	RDBM TAG IN E ABUT OF BRIDGE #53-303 OVER LITTLE ROCK CREEK 4' N/O C/L PEARBLOSSOM HWY	L 378
PALMDALE (2010)	2,899.451 883.755	L&T IN SW COR CONC WK IN FRONT OF BLDG #7313 PEARBLOSSOM HWY 60' N C/L & 1580' E/O BRIDGE #53-303 OVER LITTLE ROCK CR	L 380
BASELINE (2010)	2,517.784 767.423	CS MON IN WELL 2' DN @ C/L INT AVE M & 60TH ST W MKD (SEC COR 34,35,3,2,R13W,T7N,T6N,)	L 397
PALMDALE (2010)	2,834.600 863.989	USC&GS MON 1.3' UP 43' W/O C/L SPRR & 127' N/O C/L BARREL SPRINGS RD W & 215' W/O C/L SIERRA HWY MKD (M 429 1935)	L 451
PALMDALE (2010)	2,713.830 827.178	USC&GS MON 3" UP 47' W/O C/L SIERRA HWY & 80' S/O C/L PROD AVE R-8 MKD (H 427 1935) MKR POST 1' N/O MON	L 456
PALMDALE (2010)	2,554.072 778.483	CS MON IN WELL 1.3' DN @ C/L INT AVE P & 30TH ST E MKD(17-18-19-20,R11W,T6N)	L 510
PALMDALE (2010)	2,553.622 778.346	CS MON IN WELL 1.5' DN @ C/L INT AVE P & 40TH ST E MKD (SEC COR 16,17,20,21,R11W,T6N 1926)	L 518
BASELINE (2010)	2,537.730 773.502	RDBM MON IN WELL 8IN DN @ NW COR AVE N & PROP 85TH ST E 100FT W & 50FT N C/L INT 2IN IP 2FT N	L 682
BASELINE (2010)	2,520.613 768.285	RDBM MON IN WELL 8IN DN ON NW COR AVE N & 70TH ST E 100FT W & 50FT N C/L INT 2IN IP MKR 2FT N	L 688

QUAD YEAR	ELEV FOOT/METER	DESCRIPTION	BM NUMBER
BASELINE (2010)	2,515.688 766.784	RDBM MON IN WELL 8IN DN ON NW COR AVE N & PROP 65TH ST E 100FT W & 50FT N C/L INT 2IN IP 2FT N	L 690
BASELINE (2010)	2,502.605 762.796	CS MON IN WELL 1.5' DN @ C/L INT AVE N & 50TH ST E E MKD (SEC COR 3,4,9,10,T6N,R11W)	L 696
PALMDALE (2010)	3,006.538 916.396	RDBM TAG IN SW LEG TOWER #ADL-TOL I31-5 @ NE COR 87TH ST E & FORT TEJON RD 49' N & 95' E/O C/L INT	L 769
PALMDALE (2010)	3,092.601 942.628	RDBM MON IN WELL 8" DN 49' N C/L FORT TEJON RD & 148' W/O 92ND ST E 302' W/O MI MKR #1.07 2" IP MKR POST 2'M N/O MON CUT OFF TELE POLE 5' N/O MON	L 770
PALMDALE (2010)	3,101.111 945.221	RDBM MON IN WELL .5' DN 49' S/O C/L FORT TEJON RD & 1020' E/O MT EMMA RD 120' W/O MI MKR #1.07 2" IP MKR 2' S/O MON 40' E/O C/L 92ND ST E	L 771
PALMDALE (2010)	3,159.578 963.042	RDBM MON IN WELL .5' DN 49' N C/L FORT TEJON RD & 528' E/O 96TH ST E 100' E/O MI MKR #1.73 2" IP MKR 2' N/O MON	L 772
PALMDALE (2010)	3,162.205 963.843	RDBM MON IN WELL .5' DN 49' S C/L FT TEJON RD & 800' E/O 96TH ST E 210' W/O MI MKR #1.83 20' W PP #4040008E 2" IP MKR 2' S/O MON	L 773
PALMDALE (2010)	3,201.211 975.732	RDBM MON IN WELL .5' DN @ NW COR FT TEJON RD & 101ST ST E 112' W & 49' N/O C/L INT MKD (1960) 3' S/O BARBWIRE FENCE & 43' W/O SE COR OF FENCE @ ANG PT	L 774
PALMDALE (2010)	3,205.571 977.061	RDBM MON IN WELL .5'M DN @ SW COR FORT TEJON RD & 101ST ST E 49' S & 112' W/O C/L INT MKD (1960) IP MKR 2' S/O MON	L 775
BASELINE (2010)	3,268.898 996.363	RDBM MON IN WELL .5' DN @ SW COR FORT TEJON RD & 106TH ST E 100' S & 49' W/O C/L INT MKD (1958) IP MKR 2' W/O MON	L 776
BASELINE (2010)	3,167.908 965.581	CS MON IN WELL 2' DN @ C/L INT 106TH ST E & AVE W (PROP) 0.5MI N/O FORT TEJON RD MKD (SEC COR 20,21,28,29,R10W,T5N)	L 778
BASELINE (2010)	3,171.746 966.751	RDBM MON IN WELL .5' DN @ NE COR 106TH ST E & AVE W PROP 100' N & 49' E/O C/L INT 2740' N/O FORT TEJON RD MKD (1960) IP MKR 2' E/O MON	L 779
BASELINE (2010)	3,119.266 950.755	RDBM MON IN WELL .5' DN @ SW COR 106TH ST E & AVE V-8 27,16' S & 49' W/O C/L INT 2" IP MKR 2' W/O MON	L 780
BASELINE (2010)	3,117.890 950.336	2" IP WITH CUT SPK IN WELL.5' DN @ C/L INT 106TH ST E & AVE V-8	L 781
BASELINE (2010)	3,049.177 929.392	L&T IN SLY CONC FTG OF DWP TOWER #H220-1 @ SW COR 106TH ST E & AVE V 190' S & 56' W/O C/L INT	L 782
BASELINE (2010)	3,042.674 927.410	CS MON IN WELL 1.5' DN @ C/L INT 106TH ST E & AVE V MKD(16,17,20,21,T5N,R10W)	L 783
BASELINE (2010)	2,967.004 904.346	USGS MON 10" UP @ SW COR PEARBLOSSOM HWY & 106TH ST E 62' S & 43' W C/L INT MKD LS 23 1929	L 784
BASELINE (2010)	2,528.922 770.818	CS BM MON 4" UP @ NE COR AVE M & 90TH ST E 36' N & 36' E/O C/L INT MKD (BM 107-18 1961)	L 1182

QUAD YEAR	ELEV FOOT/METER	DESCRIPTION	BM NUMBER
BASELINE (2010)	2,539.567 774.062	CSBM MON 4" UP @ NE COR 90TH ST E & AVE M-8 40' N & 38' E/O C/L INT MKD (BM 107-17 1961) MKR POST 3' E/O MON	L 1183
BASELINE (2010)	2,605.591 794.187	CSBM MON 6" UP @ NE COR 90TH ST E & AVE P 30' N & 69' E/O C/L INT MKD (BM 107-12 1960)	L 1188
BASELINE (2010)	3,404.790 1,037.783	USGS MON 6" UP 121' E/O C/L SAN FRANCISQUITO CYN RD & 20' S/O C/L ELIZABETH LAKE RD MKD (3403 RESET SEPT 1939) IP MKR 1' N/O MON	L 1329
BASELINE (2010)	3,453.706 1,052.693	CSBM MON 6" UP 25' S C/L ELIZABETH LAKE RD & 0.9MI E/O SAN FRANCISQUITO CYN RD 62' W DIRT RD TO HSE #13136 (10' N/O PP #767422E) MKD (BM 111-27 1960) IP MKR 2' N/O MON	L 1331
PALMDALE (2010)	3,426.209 1,044.312	CSBM MON 6" UP 11.6M N/O C/L ELIZABETH LAKE RD & 3.7MI W/O 90TH ST W 1.9MI E/O SAN FRANCISCO CYN RD MKD (BM 111-25 1960) IP MKR 2' S/O MON	L 1333
PALMDALE (2010)	3,377.216 1,029.379	CSBM MON 6" UP 82 S C/L ELIZABETH LAKE RD & 3MI W/O 90TH ST W 15' E/O C/L DIRT RD TO HSE HSE #11780 3' W PP #59605H MKD (111-24 1960)	L 1334
PALMDALE (2010)	3,205.010 976.890	CSBM MON 6" UP 30' N/O C/L ELIZABETH LAKE RD & 1.1MI W/O 90TH ST W 56' N/O PP #2334393E 49' W/O CULV #10.92 MKD (BM 111-20 1959) IP MKR 2' S/O MON	L 1338
PALMDALE (2010)	3,135.395 955.671	CSBM MON 6" UP 26' S/O C/L ELIZABETH LAKE RD & 0.1MI W/O 90TH ST W 3' N/O PP (NO #) MKD (BM 111-18 1959) MKR POST 2' N/O MON	L 1340
PALMDALE (2010)	3,114.622 949.340	CSBM MON 6" UP 30' S/O C/L ELIZABETH LAKE RD & 0.35MI E/O 90TH ST W 4' S/O PP (#4509790E) MKD (BM 111-17 1959) IP MKR 2' S/O MON 34' W/O C/L E DRIVE HSE#8626	L 1341
PALMDALE (2010)	3,077.493 938.023	CSBM MON FLUSH 30' N/O C/L ELIZABETH LAKE RD & 0.2MI E/O BOUQUET CYN RD 2' N PP #486033H MKD (BM 111-15 1959) 36' E/O & OPP HSE #7650	L 1343
PALMDALE (2010)	3,070.698 935.952	CSBM MON 25' N/O C/L ELIZABETH LAKE RD & 0.3MI E/O BOUQUET CYN RD 2.5' SW/O PP #486030 MKD (BM NO. 16) 0.4MI W/O GODDE HILL RD IRON MRK POST 6" S/O MON	L 1344
PALMDALE (2010)	3,059.239 932.459	CSBM MON FL 20' N C/L ELIZABETH LAKE RD & 56' W/O C/L GODDE HILL RD MKD (BM 111-14 1959) SUR MKR POST 1' E/O MON	L 1346
PALMDALE (2010)	2,969.768 905.188	CSBM MON 6" UP 27' N/O C/L ELIZABETH LAKE RD & 1.25MI E/O GODDE HILL RD 2' N/O PP 105432911 MKD (BM 111-11 1959)	L 1351
PALMDALE (2010)	2,923.301 891.025	CSBM MON 6" UP 36' S/O C/L ELIZABETH LAKE RD & 1.9MI E/O GODDE HILL RD 203' E/O DIRT RD 3' S/O PP #485958H MKD (BM 111-10 1959) 2" IP MKR POST 2' S/O MON @ MI MRK #5.95	L 1354
PALMDALE (2010)	2,832.675 863.402	USGS 3" IP 1.5' UP @ BASE OF RIDGE 213' S/O C/L ELIZABETH LAKE RD & 1.2MI W/O 25TH ST W 0.1MI E/O MI MKR #3.84 MKD (2831) IP MRK POST 2' S/O MON	L 1359
PALMDALE (2010)	2,760.548 841.418	CS MON IN WELL 20" DN @ C/L INT ELIZABETH LAKE RD & 20TH ST W 26' N/O PP #640395H MKD (20,21,29,28,T6N,R12W)	L 1366

QUAD YEAR	ELEV FOOT/METER	DESCRIPTION	BM NUMBER
PALMDALE (2010)	3,277.447 998.969	USC&GS MON FL 36' W/O C/L GODDE HILL RD & 0.7MI N/O ELIZABETH LAKE RD 10' S C/L DIRT RD & 26' S/O S END GUARD RAIL MKD (F 1045 1960) 20' S/O & OPP MI MRK #2.44 E/O C/L	L 1368
PALMDALE (2010)	3,261.039 993.968	USC&GS MON 12" UP 30' E/O C/L GODDE HILL RD & 1.4MI N ELIZABETH LAKE RD 56' S/O N END GUARD RAIL MKD (E 1045 1960) SUR MKR 2' S MON, 120' W/O CM#1.74	L 1369
PALMDALE (2010)	2,983.551 909.389	USC&GS MON 1' UP 37' W/O C/L GODDE HILL RD & 2.2MI N/O ELIZABETH LAKE RD 33' S C/L DIRT RD 400' S/O CALIF AQUEDUCT MKD (D 1045 1960) MRK POST 1' S/O MON	L 1370
BASELINE (2010)	2,528.410 770.662	CSBM MON 5IN UP 34FT N C/L AVE M & 175FT E C/L 35TH ST W. 6FT E PP 1054605E MK (BM 104-7 1958)	L 1373
BASELINE (2010)	2,532.458 771.896	CSBM MON 4IN UP 28FT S & 41FT W/CL INT AVE M & 47TH ST W. 4FT W PP 168073E MK (BM 104-12 1958)	L 1377
PALMDALE (2010)	2,643.089 805.616	CS MON FLUSH @ NE COR AVE O & 15TH ST W 185' N & 25' E C/L INT MKD (BM 110-10 1958 RE 5869) MKR POST 1' W/O MON	L 1380
PALMDALE (2010)	2,559.181 780.041	CSBM MON 4" UP 38' W/O C/L 20TH ST W & 55' N/O C/L AVE M-8 13' S/O PP #2360132E MKD (BM 110-14 1958)	L 1384
PALMDALE (2010)	3,187.522 971.560	USC&GS MON 4" UP 45' NW/O C/L SIERRA HWY & 0.5MI S/O C/L MOUNTAIN SPRINGS RD 240' S/O MI MKR #23.10 MKD (W 431 RESET 1955) MKR 2' NELY/O MON USC&GS SIGN 1' W/O MON	L 1529
PALMDALE (2010)	3,186.925 971.378	USC&GS MON FLUSH 72' SE C/L SIERRA HWY & 0.5MI S/O MOUNTAIN SPRINGS RD 308' SLY MI MKR 23.10 MKD (SLOOT 1938) MKR POST 3' S/O MON	L 1530
PALMDALE (2010)	3,181.346 969.677	CS MON 5"M UP 154' SE/O C/L SIERRA HWY & 0.55MI S/O MOUNTAIN SPRINGS RD 430' S/O MI MKR #23.10 @ NE COR CHAIN LINK FENCE MKD (1/4 SEC COR 22,27,R12W,T5N) MKR 600MM S MON	L 1531
PALMDALE (2010)	3,084.840 940.262	CSBM MON 6" UP 0.25MI E/O C/L LISTIE AVE & 75' N/O C/L SIERRA HWY 161' NW/O MI MRK #25.16 MKD (BM 201-68 1961 RE 5869) MKR 2' S MON	L 1536
PALMDALE (2010)	3,085.061 940.329	CSBM MON IN W WINGWALL OF CULV 59' N C/L SIERRA HWY & 46' E/O C/L ACTON CYN RD E 0.6MI W/O SANTIAGO RD NR MI MKR 26.49 MKD (BM 201-70 1961)	L 1538
PALMDALE (2010)	3,053.335 930.659	CSBM MON W END N HDWL CULV 33'M N/O C/L SIERRA HWY & 1.1MI E/O CROWN VALLEY RD MKD (BM 201-71 1961) @ MI MKR #27.01	L 1539
PALMDALE (2010)	2,987.709 910.656	CSBM MON 6" UP 54' N/O C/L SIERRA HWY & 0.5MI E/O CROWN VALLEY RD 40' W/O PP #2338851E MKD (201-72 1961 RE 5869) MKR POST 2' N/O MON	L 1540
PALMDALE (2010)	2,951.834 899.722	USC&GS MON 6" UP 233' S/O C/L SOLEDAD CYN RD & NR PROD OF HORNDEAN AVE MKD (C 487 1955) MRK POST 2' E/O MON	L 1542
PALMDALE (2010)	2,773.171 845.265	USC&GS MON IN E END N HDWL SPRR CULV #424.95 110' SLY/O C/L SOLEDAD CYN RD & 370' E/O C/L MICHIGAN ST MKD (B 487 1955) OPP MI MKR #24.32	L 1544

QUAD YEAR	ELEV FOOT/METER	DESCRIPTION	BM NUMBER
BASELINE (2010)	2,967.550 904.512	CS MON FL @ NE COR CROWN VALLEY RD & SIERRA HWY 50' N & 30' E/O C/L INT 8' SE/O PP (NO#) MKD (R/W MON RE 2177)	L 1546
BASELINE (2010)	2,705.150 824.532	L&BN IN CONC DRWY TO HSE #32109 CROWN VALLEY RD 33' W/O C/L & 39' N/O C/L GILLESPIE AVE TO W	L 1552
BASELINE (2010)	2,701.424 823.397	L&T IN S END CONC HDWL CULV 60' E C/L CROWN VALLEY RD & 20' SE/O C/L SOLEDAD CYN RD 39' E/O CE MON IN WELL @ MI MKR #23.29	L 1554
BASELINE (2010)	2,701.052 823.283	USC&GS MON 1' UP 30' E/O C/L CROWN VALLEY RD & 213' S/O C/L SOLEDAD CYN RD MKD (H 53 1926) 6' S/O PP #1020151H	L 1555
BASELINE (2010)	2,504.280 763.307	CSBM MON 4" UP @ SW COR AVE M & 55TH ST W 40' S & 37' W/O C/L INT MKD (BM 104-14 1958)	L 2000
BASELINE (2010)	2,521.308 768.497	CSBM MON 4" UP @ NE COR AVE M & 15TH ST W 30' N & 215' E/O C/L INT MKD (BM 103-3 1958)	L 2003
BASELINE (2010)	2,522.058 768.726	CSBM MON 4" UP @ NW COR AVE M & 5TH ST E 40' N & 100' W/O C/L INT MKD (BM 121-1 1961) MKR POST 2' S/O MON	L 2009
BASELINE (2010)	2,506.909 764.108	CSBM MON 4" UP @ NW COR AVE M & 10TH ST E 72' N & 40' W/O C/L INT MKD (BM 121-2 1961)	L 2011
BASELINE (2010)	2,992.501 912.117	USC&GS MON 4" UP @ NW COR AVE M (PROP) & 90TH W 10' NW/O APPROX C/L MKD (Z 1044 1960) MKR POST 2' W/O MON	L 2061
BASELINE (2010)	2,759.752 841.175	CS MON FLUSH @ FUT C/L INT AVE L-8 & 90TH ST W MKD (1/4 COR 31,32,R13W,T7N,1927) MKR 10' W MON	L 2062
BASELINE (2010)	2,764.788 842.710	CS MON 2' DN @ FUT C/L INT AVE L & 100TH ST W 40' NE FENCE COR & 30' NW/O 2" IP MKR @ CL 4199 MKD (SEC COR 25,30,36,31,T7N,R14W)	L 2065
BASELINE (2010)	3,195.907 974.115	RDBM TAG IN ROCK & CONC HDWL 18' N/O APPROX C/L JOHNSON RD & 1.4MI E/O LIMERIDGE DR 7' W/O MI MKR #11.79	L 2067
BASELINE (2010)	3,350.405 1,021.207	CSBM MON FLUSH 35' N/O C/L JOHNSON RD 85' W/O C/L WLY DRWY TO HSE #12215 & 0.9MI E LIMERIDGE DR MKD (BM 119-32 1961) MKR PIPE 1' S/O MON	L 2069
BASELINE (2010)	3,458.505 1,054.156	CS MON DN 10" 55' S/O C/L JOHNSON RD & 0.3MI E/O LIMERIDGE DR 70' E/O MI MKR #12.93 MKD (SEC COR 28,27,33,34,T7N,R14W) MKR 2' N MON	L 2073
BASELINE (2010)	3,418.239 1,041.882	CS MON FL @ FENCE COR 171' W/O C/L LEAD HILL DR & 111' S/O C/L JOHNSON RD MKD (1/4 COR 28,33 ,R14W,T7N) 2" IP MKR 2' N/O MON	L 2076
BASELINE (2010)	3,411.289 1,039.764	DN IN SE CONC LEG OF TOWER #220/6 141'M N/O C/L JOHNSON RD & 0.4MI E/O ELIZABETH LAKE RD	L 2077
BASELINE (2010)	3,398.397 1,035.835	CSBM MON 6" UP 28' N/O C/L JOHNSON RD & 0.35MI E/O ELIZABETH LAKE RD 65' W/O MKR #13.59 MKD (BM 119-35 1961)	L 2078
PALMDALE (2010)	2,623.936 799.778	L&BN IN CB 2' E BCR @ SE COR PALMDALE BLVD (S SER RD) & 16TH ST E 15' S & 46' E/O C/L INT	L 2488
PALMDALE (2010)	2,619.452 798.411	RD HD BOLT IN W CB 6.5' S BCR @ SW COR ROSEMARIE ST & PALMDALE BLVD (S SERV RD)	L 2489

QUAD YEAR	ELEV FOOT/METER	DESCRIPTION	BM NUMBER
PALMDALE (2010)	2,605.395 794.127	SQ HD SPK IN WALK 6' W/O W CB & 9' N/O BCR @ NW COR PALMDALE BLVD & 22ND ST E	L 2491
PALMDALE (2010)	2,599.956 792.469	CSBM MON FL 1' E/O CF 37' N/O BCR @ NE COR PALMDALE BLVD & 35TH ST E MKD (BM 106-4 1958)	L 2495
PALMDALE (2010)	2,611.574 796.010	L&BN IN CONC HDWL 0.25MI E/O 40TH ST E & 43' S/O C/L PALMDALE BL	L 2499
PALMDALE (2010)	2,616.350 797.466	L&BN IN CONC HDWL 45' S/O C/L PALMDALE BL & 0.5MI E/O 40TH ST E (92' W/O 45TH ST E) & 128' W/O W END (NOSE) C/L MED	L 2500
PALMDALE (2010)	2,621.881 799.152	CSBM MON 6" DN 36' N C/L PALMDALE BL & 0.3MI E/O 47TH ST E 3' S/O PP #971024E IP MKR 1.5' UP 2' S/O MON MKD (BM 107-1 1960)	L 2501
PALMDALE (2010)	2,628.457 801.156	CSBM MON 4" UP @ NE COR PALMDALE BL & 55TH ST E 73' N & 20' E/O C/L INT 3' S/O PP MKD (BM 107-2 1960)	L 2502
PALMDALE (2010)	2,632.368 802.348	CSBM MON FL @ NE COR PALMDALE BLVD & 60TH ST E 40' N & 60' E/O C/L INT MKD (BM 107-3 1960) 3' N/O PP #4483799E BETWEEN POLE & DOWN GUY	L 2503
PALMDALE (2010)	2,811.802 857.040	USC&GS MON 6" UP 102' W C/L SIERRA HWY & 780' N/O BARREL SPRINGS RD (E) 65' SW/O PP #2100775E 62' E/O C/L RR TRACKS MKD (Z 428 1935) MKR POST 1' E/O MON	L 2513
PALMDALE (2010)	2,810.354 856.598	USC&GS MON 8" UP 102' W/O C/L SIERRA HWY & 0.2MI N/O BARREL SPRINGS RD (E) MKD (Y 428 1935) MKR POST 1' E/O MON	L 2514
PALMDALE (2010)	2,736.906 834.211	USC&GS MON FLUSH 184' W/O C/L SIERRA HWY & 0.22MI N/O C/L AVE S MKD (S 427 1935) MKR POST 1' E/O MON 225' S/O S EDGE BLDG #37352	L 2518
PALMDALE (2010)	2,735.527 833.791	USC&GS MON FL 108' W C/L SIERRA HWY & 0.3MI N/O AVE S 10' SW/O PP (NO#) MKD (Q 427 1935) MKR POST 1' S/O MON	L 2519
PALMDALE (2010)	2,664.333 812.091	L&T IN S CB 1' E BCR @ SE COR AVE SIERRA HWY & AVE Q-12 20' S & 69' E/O C/L INT	L 2522
PALMDALE (2010)	2,634.830 803.099	L&BN IN CB RET 4' E/O BCR @ NW COR AVE N & MEDWAY AVE MKD (BM)	L 2570
PALMDALE (2010)	2,632.808 802.482	L&BN IN CB RET 4' W/O BCR @ NE COR AVE N & MEDWAY AVE MKD (BM)	L 2571
PALMDALE (2010)	2,597.262 791.648	L&BN IN S CB AVE N 40'S/O C/L & 20' E/O C/L ELY DRWY TO HSE #2240 340' W/O C/L 22ND ST W	L 2574
PALMDALE (2010)	2,638.328 804.165	L&N IN S CB AVE P 2' E/O END CB & 0.2MI W/O 3RD ST E MKD (BM) 37' S/O C/L AVE P	L 2576
PALMDALE (2010)	2,662.365 811.491	RDBM TAG IN E CB 4' N/O BCR @ NE COR AVE P & COUNTRY CLUB DR	L 2580
PALMDALE (2010)	2,663.191 811.743	RDBM TAG IN N CB 4' E/O BCR @ NW COR AVE P & COUNTRY CLUB DR	L 2581

QUAD YEAR	ELEV FOOT/METER	DESCRIPTION	BM NUMBER
PALMDALE (2010)	3,013.086 918.391	RDBM TAG BACK HDWL CULV & MP 0.70 40' N/O C/L PEARBLOSSOM HWY & 415' NELY/O P I @ 1ST CURVE E/O BRIDGE OVER SPRR 0.75MI NE/O SIERRA HWY	L 2590
PALMDALE (2010)	3,013.154 918.412	L&BN IN BACK HDWL 40' WLY C/L PEARBLOSSOM HWY & 0.9MI NE/O SIERRA HWY @ MI MKR #0.84	L 2591
PALMDALE (2010)	2,985.427 909.961	L&BN IN BACK HDWL 40' WLY C/L PEARBLOSSOM HWY & 550' S/O C/L OLD NADEAU RD @ MI MKR #0.98	L 2592
PALMDALE (2010)	2,643.713 805.806	CSBM MON FL @ SW COR PALMDALE BLVD & 75TH ST E 80' S & 30' W/O C/L INT MKD (BM 107-6 1960) 2" IP MKR POST 2' W/O MON	L 2605
PALMDALE (2010)	2,647.443 806.943	CSBM MON FL @ SW COR PALMDALE BL & (FUT) 88TH ST E 62' S & 30' W/O C/L INT MKD (BM 107-7 1960) 2" IP MKR POST 2' S/O MON	L 2606
BASELINE (2010)	2,555.755 778.996	CS MON IN WELL 2' DN @ C/L INT 90TH ST E & AVE N MKD (5,6,7,8,T6N,R10W)	L 2608
PALMDALE (2010)	2,561.039 780.607	RDBM TAG IN E CB 1' N/O BCR @ NE COR AVE P & 25TH ST E 76' N & 31' E/O C/L INT	L 2623
BASELINE (2010)	2,528.478 770.682	CSBM MON FLUSH @ SW COR AVE N & 75TH ST E 75FT S & 15FT W/O C/L INT MKD (BM 108-14 1961)	L 2642
PALMDALE (2010)	2,702.186 823.629	L&T IN E CB 7' S/O BCR @ SE COR DIVISION ST & TAINTOR RD 60' S & 30' E/O C/L INT	L 2656
PALMDALE (2010)	2,696.813 821.991	L&T IN E CB 5' S/O BCR @ SE COR DIVISION ST & AVE Q-10 54' S & 30' E/O C/L INT	L 2657
PALMDALE (2010)	2,888.869 880.530	USC&GS MON IN W ABUT BRIDGE OVER LITTLE ROCK CR 5' N/O C/L PEARBLOSSOM HWY MKD (V 1045 1960)	L 2662
PALMDALE (2010)	2,903.719 885.056	USC&GS MON 1' E/O W EDGE HDWL @ SE COR 85TH ST E & PEARBLOSSOM HWY 20' E & 26' S/O C/L INT MKD (F 977 1964)	L 2664
BASELINE (2010)	2,916.375 888.914	RDBM TAG N CB 4' E/O BCR @ NE COR 87TH ST E & PEARBLOSSOM HWY 79' E & 40' N/O C/L INT	L 2666
BASELINE (2010)	2,935.597 894.773	RDBM TAG IN CTR HDWL 24' S/O C/L PEARBLOSSOM HWY & 0.5MI E/O 87TH ST E 48'M E/O PP #543955H	L 2667
BASELINE (2010)	2,817.501 858.777	RDBM TAG IN CONC FENCE FTG @ NW COR PUMPING STA NE COR 87TH ST E & AVE T-8 125' N & 36' E/O C/L	L 2751
BASELINE (2010)	2,715.234 827.606	RDBM TAG IN LT STD @ NE COR 90TH ST E & AVE S 180'M N & 50'M E/O C/L INT	L 2754
BASELINE (2010)	2,464.268 751.111	RDBM TAG IN CONC FTG BREATHER PIPE @ NW COR 50TH ST E & AVE M-8 11' N & 32' W/O C/L INT	L 2757
PALMDALE (2010)	3,070.580 935.916	USC&GS MON FL 65' NW/O C/L SIERRA HWY & 0.55MI S PEARBLOSSOM HWY 63' N/O N BLDG LINE 34900 MKD (N 899 1955) MKR POST 2' S/O MON	L 2769
BASELINE (2010)	3,364.129 1,025.390	CS MON IN WELL 1' DN @ C/L 106TH ST E & 0.5MI S/O FT TEJON RD MKD (28,29,32,33,T5N,R10W)	L 2813

QUAD YEAR	ELEV FOOT/METER	DESCRIPTION	BM NUMBER
BASELINE (2010)	3,368.761 1,026.801	2" IP 49' S & 49' W/O CS MON ON 106TH ST E 0.5MI S/O FT TEJON RD	L 2814
BASELINE (2010)	2,888.965 880.559	CSBM MON @ SW COR CROWN VALLEY RD & CEDRAL ST 70' S & 50'M W/O C/L INT MKD (NC 1008 1963 RE 5869) 3' W/O CH LINK FENCE	L 2851
PALMDALE (2010)	3,106.427 946.842	ST HWY MON 6" UP @ NW COR SOLEDAD CYN RD & SIERRA HWY 150' N & 170' W/O C/L INT MKR POST 1' S/O MON	L 2853
PALMDALE (2010)	2,659.871 810.731	RDBM TAG NR S END OF CONC CULV 36' S & 25' E/O C/L INT 30TH ST E & AVE R-12	L 3057
BASELINE (2010)	2,631.595 802.113	CS BM MON FL 57' E & 27' N/O C/L INT AVE Q & 90TH ST E MKD (BM 107-10 1966)	L 4081
BASELINE (2010)	3,268.069 996.110	CS MON IN WELL 4" DN @ C/L INT FT TEJON RD & 106TH ST E MKD (1/4 COR 29,28,R10W,T5N,RE 7078)	L 4144
PALMDALE (2010)	2,722.648 829.866	CSBM MON FL 33' N/O C/L SOLEDAD CYN RD & 0.1MI E/O GILLESPIE AVE MKD (RE 5869 BM-NC 1227) MKR POST 2' N/O MON	L 4181
PALMDALE (2010)	2,769.187 844.051	CSBM MON FL 36' S/O C/L SOLEDAD CYN RD ON C/L PROD WISCONSIN ST MKD (RE 5869 BM-NC 1228) MKR POST 1.5' SW/O MON	L 4182
PALMDALE (2010)	2,892.106 881.517	L&BN IN W END OF CULV 27' N C/L SOLEDAD CYN RD & 72' E/O C/L TINDALL AVE NR MI MKR #25.80	L 4184
PALMDALE (2010)	3,038.520 926.144	L&BN IN CTR HDWL 20' N/O C/L SOLEDAD CYN RD & 0.5MI SWLY/O SIERRA HWY @ MI MKR #26.82	L 4186
PALMDALE (2010)	3,098.957 944.565	CS MON IN E END CULV 25' N/O C/L SIERRA HWY & 0.55MI E/O LISTIE AVE MKD (BM 201-67A 1968) @ MI MKR #24.84	L 4188
PALMDALE (2010)	3,110.546 948.097	CE MON E END CULV 36' N & 50' E/O INT SIERRA HWY & SOLEDAD CYN RD MKD (201-66A 1968 RE 5869)	L 4189
PALMDALE (2010)	3,197.670 974.653	CE MON IN TOP/O CONC JUNCT CHAMBER 40' N C/L SIERRA HWY & 0.5MI NELY/O SOLEDAD CYN RD @ MI 23.64 MKD (201-65B 1968 RE 5869)	L 4190
PALMDALE (2010)	2,980.036 908.318	USC&GS MON FLUSH 112' SE/O C/L INT SIERRA HWY & PEARBLOSSOM HWY MKD (RESET 1969 LOFT 2) MKR POST 3' S/O MON	L 4193
BASELINE (2010)	3,421.206 1,042.787	RDBM TAG IN E CB @ BCR NE COR JOHNSON RD & LEADHILL DR	L 4196
BASELINE (2010)	3,480.940 1,060.994	RDBM TAG IN E CB NR BCR @ NE COR JOHNSON RD & LIMERIDGE DR	L 4197
BASELINE (2010)	2,769.368 844.106	RD MON FL 20' S & 28' E/O C/L INT (FUT) AVE L & 100TH ST W 56' E/O NLY MOST IRON GATE POST	L 4199
BASELINE (2010)	2,966.230 904.110	DWR MON IN N/W COR OF BRIDGE #333.76 OVER CALIF AQUEDUCT 420' N & 165'M E/O C/L INT AVE M & 90TH ST W MKD (ST CA DEPT WATER RESORCES-333.8A 1971)	L 4200
BASELINE (2010)	2,566.848 782.378	L&BR IN CONC CB 2' W/O BCR @ NW COR AVE M & 65TH ST W	L 4201

QUAD YEAR	ELEV FOOT/METER	DESCRIPTION	BM NUMBER
BASELINE (2010)	2,516.163 766.929	L&T IN CONC CB 2' N/O BCR @ N/E COR AVE M & 60TH ST W	L 4202
BASELINE (2010)	2,526.086 769.953	SPK IN CONC CB 2' W/O BCR @ NE COR AVE M & 10TH ST W	L 4203
PALMDALE (2010)	2,706.176 824.845	L&T IN CONC CB @ SE COR SIERRA HWY & AVE R-8 45' S/O & 40' E/O CL INT	L 4207
PALMDALE (2010)	2,671.790 814.364	RDBM TAG IN N END OF C B @ SW COR SIERRA HWY & AVE R	L 4208
PALMDALE (2010)	2,670.644 814.015	RDBM TAG IN CONC BASE OF SIGNAL LT STD @ NE COR AVE R & SIERRA HWY 36' N & 50' E/O C/L INT	L 4209
PALMDALE (2010)	2,621.206 798.946	RDBM TAG IN CONC CB 1' E/O BCR @ SE COR AVE P & SIERRA HWY	L 4213
BASELINE (2010)	2,532.871 772.021	RDBM TAG IN S CB 1' E/O BCR @ SE COR AVE M & SIERRA HWY	L 4218
BASELINE (2010)	2,532.226 771.825	USC&GS MON IN W END CULV HDWL 272' E C/L SIERRA HWY & 49' S/O C/L AVE M MKD (S 1219 1971)	L 4219
PALMDALE (2010)	2,635.584 803.328	RD TAG IN S COR SLAB TO BLDG #1215 E PALMDALE BLVD 49' N/O C/L & 162' E/O C/L 12TH ST E	L 4221
PALMDALE (2010)	2,608.064 794.940	RDBM TAG IN S CB 2' W BCR @ S/W COR PALMDALE BLVD & 30TH ST E	L 4223
PALMDALE (2010)	3,060.685 932.900	RD MON IN WELL 8'M DN @ C/L INT MT EMMA RD & TEJON RD MKD (LACO RD 1973)	L 4294
PALMDALE (2010)	2,697.110 822.082	RDBM TAG IN W CB 1' N BCR @ N/W COR 10TH ST W & ELIZIBETH LAKE RD	L 4296
PALMDALE (2010)	3,086.120 940.652	RD MON IN WELL @ SW COR ELIZABETH LAKE RD & BOUQUET CYN RD 30' W & 33' S/O C/L INT 3' N/O PP #574560E IP MKR POST 2' E/O MON	L 4298
BASELINE (2010)	3,405.744 1,038.074	L&T IN ELY END GAS ISL @ SE COR ELIZABETH LAKE RD & SAN FRANCISQUITO CYN RD 80' E/O & 25' S/O C/L INT	L 4301
BASELINE (2010)	3,349.380 1,020.894	RDBM TAG IN CONC WALL @ NLY SIDE OF DRWY TO HSE #14161 33' E C/L ELIZABETH LAKE RD & 200' S/O C/L FIRTREE DR	L 4302
PALMDALE (2010)	3,150.986 960.423	CSBM MON 27' S/O C/L GODDE HILL RD & 0.4MI NE/O ELIZABETH LAKE RD 105' E/O MI MKR #2.80 MKD (BM 112-1A 1972) 265' W/O W END GUARD RAIL	L 4303
PALMDALE (2010)	3,113.473 948.989	CSBM MON 43' E/O C/L GODDE HILL RD & 1.9MI N/O ELIZABETH LAKE RD 47' N/O MI MKR #1.37 315' S/O S/O HUGHS RANCH RD MKD (112-2A 1972) IP MKR 1.5' W/O MON	L 4305
PALMDALE (2010)	2,882.195 878.496	DWR MON 49' W/O C/L GODDE HILL RD & 0.4MI S/O AVE N 18'M SE/O PP #1821013E @ ANGLE PT OF WIRE FENCE MKD (M3-299) MKR POST 1' S/O MON	L 4308

QUAD YEAR	ELEV FOOT/METER	DESCRIPTION	BM NUMBER
PALMDALE (2010)	2,735.638 833.825	CS MON IN WELL 1' DN ON C/L AVE N & 10' W/O C/L 60TH ST W MKD (SEC COR 11,10.3,2)	L 4309
PALMDALE (2010)	3,154.482 961.489	RDBM MON IN WELL 5" DN 49' SW C/L FORT TEJON RD & 243' W/O 95TH ST E MKD (RD DEPT 1974) IP MKR 2' S/O MON	L 4311
PALMDALE (2010)	2,950.411 899.288	DWR MON IN NW COR OF BRIDGE OVER AQUEDUCT 420' N/O & 14' W/O C/L INT AVE V & 82ND ST E MKD (BM 356.1A 1971)	L 4312
PALMDALE (2010)	2,600.956 792.774	2" IP WITH CONC PLUG & DPW WASH & SM SPK 6" UP 50' E & 50' S/O C/L INT AVE N & 25TH ST W 7' S/O WLY MOST F HYD GUARD POST	L 4318
PALMDALE (2010)	2,634.535 803.009	L&BN IN CB 5' N/O END @ NE COR AVE O & 10TH ST W 178'M N & 42' E/O C/L INT	L 4321
PALMDALE (2010)	2,686.539 818.860	RDBM TAG IN S CB 2' W BCR @ SE COR PALMDALE BLVD & 5TH ST W 120' E & 42' S/O C/L INT	L 4323
PALMDALE (2010)	2,672.529 814.589	CSBM MON IN WALK 1' N/O N CB (SERV RD) 406' E & 81' N/O C/L INT 3RD ST E & PALMDALE BLVD MKD (BM 110-1 1958 RE 5869)	L 4325
PALMDALE (2010)	2,675.597 815.524	CS MON IN WELL 10" DN ON C/L AVE S & 0.25MI E/O 30TH ST E OPP DRWY TO BLDG #3205 MKD (1/4 SEC 6,32,T6N,T5N,R11W,RE 7078)	L 4339
PALMDALE (2010)	2,670.123 813.856	CS MON IN WELL 7" DN 6' S/O C/L AVE S & 13' W/O C/L 42ND ST E MKD (1/4 COR 5,T5N,T6N,R11W, RE 2177)	L 4341
PALMDALE (2010)	2,619.427 798.404	RDBM TAG IN W CB 30TH ST E 42.7' W/O C/L & 0.25MI N/O C/L AVE R & 100' S/O N'LY P/L OF PARK	L 4347
PALMDALE (2010)	2,629.052 801.337	RDBM TAG IN W CB 23' S/O BCR @ S/W COR 30TH ST E & AVE R	L 4349
PALMDALE (2010)	2,649.488 807.566	RCE TAG #10915 IN W CB 20' N/O BCR @ NW COR 30TH ST E & AVE R-8	L 4350
BASELINE (2010)	2,480.202 755.968	RD MON IN CONC 1' DN @ NE COR AVE M & 50TH ST E 49' N & 49' E/O C/L INT (BENT OVER MKR POST 2' W/O MON) MKD (LA CO RD DEPT)	L 4465
PALMDALE (2010)	2,697.080 822.072	RDBM TAG IN S CB 8' E/O BCR @ SE COR PALMDALE BLVD & 10TH ST W	L 4618
PALMDALE (2010)	2,864.796 873.192	RDBM TAG IN SWLY COR OF CONC VAULT 26' NLY C/L SOLEDAD CYN RD & 77' WLY/O C/L SANTIAGO RD	L 4656
PALMDALE (2010)	2,908.010 886.364	2" IP W/CONC PLUG & CS TAG 8" UP 49' N/O C/L SOLEDAD CYN RD & 56' E/O C/L LISTIE AVE	L 4657
PALMDALE (2010)	2,832.682 863.404	USC&GS MON IN WELL 1' DN 20' S/O C/L BARREL SPRINGS RD W & 46' W/O SPRR MAINLINE W/O SIERRA HWY MKD (K 811 1947)	L 4659
PALMDALE (2010)	2,890.008 880.877	RDBM TAG IN S END C B @ NW COR PEARBLOSSOM HWY & 82ND ST E & 32' W & 58' N/O C/L INT	L 4661
PALMDALE (2010)	2,594.528 790.815	L&T IN N CB 1' W/O BCR @ NW COR AVE N & 45TH ST W 66' W & 42' N/O C/L INT	L 4694

QUAD YEAR	ELEV FOOT/METER	DESCRIPTION	BM NUMBER
PALMDALE (2010)	2,886.052 879.671	RDBM TAG IN ELY EDGE OF CONC DRWY TO HSE #753 BARREL SPRINGS RD 50' N/O C/L & 164' W/O C/L ROZALEE DR	L 4696
PALMDALE (2010)	2,881.770 878.366	RDBM MON IN WELL 7" M DN 60' S/O C/L BARREL SPRINGS RD & 416' W/O C/L EDGEWATER RD 27' SE PP #4118189E MKD (1981) IP MKR 2' N/O MON	L 4698
PALMDALE (2010)	2,889.430 880.701	RDBM MON IN WELL 43' N/O C/L BARREL SPRINGS RD & 40' E C/L LAGO LINDO RD 4' SLY PP (NO #) MKD (1981) 2" IP MKR 2' S/O MON	L 4699
PALMDALE (2010)	2,979.293 908.091	RDBM TAG IN CONC WK OF BRIDGE OVER (14) FRWY & CALIF AQUEDUCT 1' E/O NW END 18' N/O C/L BARREL SPRINGS RD	L 4700
PALMDALE (2010)	2,982.876 909.183	RDBM TAG ON TOP CONC GUARD RAIL SW COR BRIDGE OVER (14) FRWY & CALIF AQUEDUCT 1' E/O END 16' S/O C/L BARREL SPRINGS RD	L 4701
PALMDALE (2010)	3,063.435 933.738	RDBM MON IN WELL 8" DN 70' N/O C/L BARREL SPRINGS RD & 30' E/O APPROX C/L VISTA DEL LARGO MKD (1981) 2" IP MKR 2' W/O MON	L 4702
PALMDALE (2010)	2,966.594 904.221	RDBM TAG IN E CB 1' N/O S END BRIDGE #B1627 OVER CALIF AQUEDUCT 15' E/O C/L TIERRA SUBIDA AVE & 0.3MI S/O C/L AVE S	L 4705
PALMDALE (2010)	2,958.510 901.757	DWR MON IN CONC WALK @ NW COR BRIDGE #B1627 OVER CALIF AQUEDUCT 15' W/O C/L TIERRA SUBIDA AVE & 0.3MI S/O C/L AVE S MKD (345.7A 1971)	L 4706
BASELINE (2010)	2,504.062 763.240	RDBM MON IN WELL 4" DN @ SE COR AVE N & 50TH ST E 72' E & 45' S/O C/L INT 4' S/O PP# 1707743E MKD (1981) MKR BENT OVER 4' E/O MON	L 4708
PALMDALE (2010)	2,833.087 863.528	DPW BM TAG IN NW COR OF 3FTX3FT CONC F HYD PAD 25' NELY C/L ALISO CYN RD & 50' NWLY/O C/L CARSON MESA RD 0.5MI SWLY/O SOLEDAD CYN RD	L 4890
PALMDALE (2010)	2,831.391 863.011	2" IP W/DPW BM TAG IN WELL 8" DN 59' SWLY C/L ALISO CYN RD & 6' E/O C/L PROD CARSON MESA RD RD 10' NE/O PP (#1201101E) MKR 2' WLY MON	L 4891
PALMDALE (2010)	2,874.818 876.247	FC BM MON FL 118' W/O C/L ALISO CYN RD & 266' S/O C/L EL DORADO DR 39' S/O PP #4143299E MKD (BM 126-80460) MKR POST 5' E/O MON	L 4892
PALMDALE (2010)	2,883.631 878.933	2" IP W/DPW BM TAG IN WELL 8" M DN 39' NELY ALISO CYN RD & 30' NLY C/L BLACKSHIRE WAY @ HSE #31990 MKR 2' E/O MON	L 4893
PALMDALE (2010)	2,885.232 879.421	DPW BM TAG 3' N/O S END ROCK CULV 59' NE/O C/L ALISO CYN RD & 1.2MI SE/O SOLEDAD CYN RD 92' S/O C/L BLACKSHIRE WAY NR HSE #31970	L 4894
PALMDALE (2010)	2,931.139 893.414	DPW BM TAG IN CONC DRAIN APRON 6' E & 2' N/O SW COR 36" M W ALISO CYN RD & 11' S/O C/L AVE Y-8	L 4896
PALMDALE (2010)	2,958.097 901.631	CS MON FL 30' WLY C/L ALISO CYN RD & 0.3MI S/O AVE Y-8 MKD (BM NC 1256) MKR POST 1' W/O MON	L 4897
PALMDALE (2010)	3,032.730 924.379	CS MON FL 35' E/O C/L ALISO CYN RD & 0.6MI S/O AVE Y-8 40' W/O PP (NO#725019E) MKD (BM NC 1257) MKR POST 1' NLY/O MON @MM 2.28	L 4898

QUAD YEAR	ELEV FOOT/METER	DESCRIPTION	BM NUMBER
PALMDALE (2010)	3,048.988 929.334	DPW BM TAG CTR OF ROCK HDWL 19' SWLY C/L ALISO CYN RD & 0.65MI S/O AVE Y-8 (NR MI MKR #2.28)	L 4899
PALMDALE (2010)	3,071.497 936.195	DPW BM TAG CTR OF ROCK HDWL 20' E/O C/L ALISO CYN RD & 0.95MI S/O AVE Y-8 (NR MI MKR #2.62)	L 4900
PALMDALE (2010)	3,071.989 936.345	DPW BM TAG 7' S/O N END ROCK HDWL 18' W C/L ALISO CYN RD & 0.95MI S/O AVE Y-8 7' S'LY MI MKR #2.62	L 4901
PALMDALE (2010)	2,614.591 796.930	DPW BM TAG IN E CB 1' N/O BCR @ NE COR 60TH ST W & AVE M-8	L 4908
PALMDALE (2010)	2,734.484 833.473	DPW BM TAG E CB 1' N/O BCR @ NE COR AVE N & 60TH ST W	L 4909
PALMDALE (2010)	3,055.299 931.258	DPW BM TAG IN HDWL CULV #7.90 4' FROM E END 21' S/O C/L ELIZABETH LAKE RD & 118' E/O C/L GODDE HILL RD	L 4910
PALMDALE (2010)	2,861.136 872.077	DPW BM TAG NR CTR OF S HDWL CULV #4.87 20' S/O C/L ELIZABETH LAKE RD & 2.2MI W/O 25TH ST W	L 4912
PALMDALE (2010)	2,763.318 842.262	DPW BM TAG N CB 1' E BCR @ NE COR 20TH ST W & ELIZABETH LAKE RD	L 4915
PALMDALE (2010)	2,762.174 841.913	DPW BM TAG S CB 1' E BCR @ SE COR 15TH ST W & ELIZABETH LAKE RD	L 4916
PALMDALE (2010)	2,686.946 818.984	DPW BM TAG IN C B 1' W/O W CB 17' S/O BCR @ N END CB @ SW COR PALMDALE BLVD & 5TH ST W	L 4917
PALMDALE (2010)	2,720.401 829.181	DPW BM TAG IN NW COR HDWL CULV @ SE COR AVE R & DIVISION ST	L 4918
PALMDALE (2010)	2,902.540 884.697	DPW BM TAG IN W HDWL LITTLEROCK IRRIGATION CONC DITCH 210' S & 46' W/O C/L INT PEARBLOSSOM HWY & BARREL SPRINGS RD @ MI MRK #1.28	L 4922
PALMDALE (2010)	2,874.437 876.131	DPW BM TAG IN N CB 15' W/O BCR @ NW COR 30TH ST E & PEARBLOSSOM HWY	L 4923
PALMDALE (2010)	2,784.431 848.697	DPW BM TAG IN S CB 1' W BCR @ SW COR 42ND ST E & PEARBLOSSOM HWY	L 4925
PALMDALE (2010)	2,756.567 840.204	L&TAG IN S CB 2' E/O W END 363' W/O C/L HWY #138 (FT TEJON) & 42' S/O C/L PEARBLOSSOM HWY @ W END BLDG #5508	L 4927
PALMDALE (2010)	2,892.979 881.783	DPW BM TAG IN NE COR OF CONC SLAB 50' S/O & 86' W/O C/L INT PEARBLOSSOM HWY & 82ND ST E	L 4928
PALMDALE (2010)	3,029.146 923.286	DPW BM TAG IN N CB2' E BCR @ NE COR SIERRA HWY & LISTIE AVE	L 4930
PALMDALE (2010)	2,811.629 856.987	DPW BM TAG N CB 1' E BCR @ NE COR SOLEDAD CYN RD & KASHMERE CYN RD	L 4931
PALMDALE (2010)	3,291.968 1,003.395	USGS DISC IN W END HDWL CULV #12.07 15' N C/L ELIZABETH LAKE RD & 2.3MI W/O 90TH ST W 131' W/O DRWY TO HSE #11035 MKD (GAGING STA)	L 4932

QUAD YEAR	ELEV FOOT/METER	DESCRIPTION	BM NUMBER
PALMDALE (2010)	3,080.816 939.036	DPW BM TAG IN NW COR CONC FOUNDATION 56' E & 167' S/O C/L INT ELIZABETH LAKE RD & BOUQUET CYN RD	L 4933
BASELINE (2010)	3,330.702 1,015.201	DPW BM TAG IN E END CONC WALK (2' FR END) @ SW COR ELIZABETH LAKE RD & JOHNSON RD 72' W & 58' S/O C/L INT	L 4934
BASELINE (2010)	3,067.559 934.995	CS BR CAP IN SE END CONC WINGWALL CULV #11.47 30' S/O C/L JOHNSON RD & 1.7MI E/O LIMERIDGE DR MKD (BM 119-30A 1976) IP MKR 2' E/O MON	L 4935
BASELINE (2010)	2,856.772 870.747	DPW BM TAG IN WELL 32' SE/O C/L MOC JOHNSON RD & 110TH ST W 30' W C/L PROD 110TH ST W 3'M S/O PP #2109688E MKD (BM 1990) IP MKR 3' W MON	L 4936
BASELINE (2010)	2,669.890 813.785	DPW BM TAG IN S CB 1' E/O BCR @ SE COR AVE M & 75TH ST W	L 4938
BASELINE (2010)	2,661.505 811.229	DPW BM TAG IN N CB NR BCR @ NE COR AVE M & PARKRIDGE PL	L 4939
BASELINE (2010)	2,521.980 768.702	DPW BM TAG IN W CB OF MEDIAN 35TH ST W (PVT ST) & 57' S/O C/L INT AVE M	L 4941
BASELINE (2010)	2,523.817 769.262	DPW BM TAG NR BACK OF WALK @ SW COR AVE M & BRIDGE OVER ANTELOPE VALLEY FRWY (14)	L 4942
BASELINE (2010)	2,531.725 771.672	L&T IN CB @ BCR NE COR AVE M & 6TH ST W 40' N/O & 66' E/O CL INT	L 4943
BASELINE (2010)	2,476.190 754.745	L&T IN SE COR OF PORCH @ HSE #4503 AVE M 25' E & 103' N/O C/L (FUT) INT 45TH ST E	L 4946
PALMDALE (2010)	2,729.457 831.941	DPW BM TAG IN W CB 1' S/O BCR @ SW COR AVE S & CASA VERDE DR 60' S & 30'M W/O C/L INT	L 4954
PALMDALE (2010)	2,694.915 821.413	DPW BM TAG IN W CB 1' S/O BCR @ SW COR AVE S & 25TH ST E	L 4956
PALMDALE (2010)	2,674.511 815.193	L&BR IN W CB @ S'LY BCR SW COR AVE S & 30TH ST E	L 4957
PALMDALE (2010)	2,673.384 814.850	DPW BM TAG IN N CB 1' E/O BCR @ NE COR AVE S & 30TH ST E	L 4958
PALMDALE (2010)	2,679.753 816.791	DPW BM TAG IN W CB 1' S BCR @ SW COR AVE S & 35TH ST E (TO THE S)	L 4959
PALMDALE (2010)	2,675.693 815.554	DPW BM TAG IN N CB 1' E/O BCR @ NE COR AVE S & 45TH ST E (TO THE N)	L 4961
PALMDALE (2010)	2,668.027 813.217	DPW BM TAG IN N CB 10' E/O BCR @ NE COR 5TH ST E & PALMDALE BLVD	L 4963
PALMDALE (2010)	2,647.243 806.882	L&BR IN NE CB RET 18' W/O BCR @ PALMDALE BLVD & 10TH ST E	L 4964
PALMDALE (2010)	2,629.472 801.465	DPW BM TAG IN S CB 1' E/O BCR @ SW COR 15TH ST E & PALMDALE BLVD	L 4965

QUAD YEAR	ELEV FOOT/METER	DESCRIPTION	BM NUMBER
PALMDALE (2010)	2,628.763 801.249	DPW BM TAG IN N CB 1' E/O BCR @ NE COR 15TH ST E & PALMDALE BLVD	L 4966
PALMDALE (2010)	2,613.828 796.697	L&N IN N CB 1' E/O BCR @ NW COR PALMDALE BLVD & 20TH ST E	L 4967
PALMDALE (2010)	2,609.059 795.244	L&N IN W CB NR BCR @ SW COR PALMDALE BLVD & 25TH ST ST E	L 4968
PALMDALE (2010)	2,609.378 795.341	DPW BM TAG IN S CB 5' E/O BCR @ SE COR 25TH ST E & PALMDALE BL	L 4969
PALMDALE (2010)	2,607.703 794.830	DPW BM TAG IN S CB 5' E BCR @ SE COR 30TH ST E & PALMDALE BLVD	L 4970
PALMDALE (2010)	2,620.702 798.792	2" IP WITH DPW BM TAG IN WELL 6" DN 40' N/O C/L PALMDALE BL & 0.35MI E/O C/L 47TH ST E (3' N/O PP #4040262E) MKR POST 2' N/O MON	L 4974
PALMDALE (2010)	2,627.325 800.811	2" IP WITH DPW BM TAG IN WELL 6" DN 120' W & 45' N/O C/L INT PALMDALE BL & 55TH ST E 3' N/O PP #4040256E MKR POST 2' N/O MON	L 4975
PALMDALE (2010)	2,632.178 802.290	2" IP WITH DPW BM TAG IN WELL 6" DN 100' W & 45' N/O C/L INT PALMDALE BL & 60TH ST E 3' N/O PP #4040148E MKR POST 2'M N/O MON	L 4976
PALMDALE (2010)	2,640.536 804.838	2" IP WITH DPW BM TAG IN WELL 6" DN 140' E & 43' N/O C/L INT PALMDALE BL & 70TH ST E 3' N/O PP #864783E MKR POST 2'M N/O MON	L 4978
PALMDALE (2010)	2,648.585 807.291	2" IP WITH DPW BM TAG IN WELL DN 6" 40' N/O PALMDALE BL & (FUT) 83RD ST E & 0.3MI E/O C/L 80TH ST E 3' N/O PP#864760E MKR POST 2'M N/O MON	L 4980
PALMDALE (2010)	2,648.110 807.146	2" IP W/DPW BM TAG 3" UP 46' N & 56' E/O C/L INT PALMDALE BLVD & 87TH ST E 1.5' N/O PP#864753E	L 4981
BASELINE (2010)	2,647.519 806.966	DPW BM TAG IN CB @ NW COR PALMDALE BL & 90TH ST E 131' W & 40' N/O C/L INT (2' W/O END CB)	L 4982
PALMDALE (2010)	2,643.380 805.705	L&T IN W CB @ NW COR SIERRA HWY & AVE Q 46' N & 40' W/O C/L INT	L 4983
PALMDALE (2010)	2,622.039 799.200	STATE HWY MON IN WELL DN 10" @ C/L INT SIERRA HWY & TECHNOLOGY DR (AVE P-8)	L 4984
PALMDALE (2010)	2,612.124 796.178	DPW BM TAG IN W CB 1' S BCR @ SW COR SIERRA HWY & AVE O-8	L 4985
PALMDALE (2010)	2,612.801 796.384	DPW BM TAG IN W CB 1' N BCR @ NW COR SIERRA HWY & AVE O-8	L 4986
PALMDALE (2010)	2,545.304 775.811	DPW BM TAG IN W CB 1' S BCR @ SW COR SIERRA HWY & SIERRA CT	L 4995
PALMDALE (2010)	2,650.858 807.984	LACS TAG IN S CB 1' E BCR @ SE COR 30TH ST E & AVE R-8	L 4996

QUAD YEAR	ELEV FOOT/METER	DESCRIPTION	BM NUMBER
PALMDALE (2010)	2,555.310 778.861	DPW BM TAG IN E CB 1' S/O BCR @ SE COR 30TH ST E & AVE P	L 5116
PALMDALE (2010)	2,756.050 840.047	DPW BM TAG IN CB 1' S/O BCR 200' N/O & 48' W/O C/L INT PEARBLOSSOM HWY (AVE T) & HWY 138 (FT TEJON RD)	L 5117
PALMDALE (2010)	2,707.843 825.353	DPW BM TAG IN ELY CB FORT TEJON RD (HWY 138) 46' E C/L & 289' SLY C/L ESSEX DR 0.5MI S/O AVE S	L 5118
PALMDALE (2010)	2,661.403 811.198	DPW BM TAG IN W CB 2' S BCR @ SW COR 47TH ST E & AVE R-8	L 5119
PALMDALE (2010)	2,660.244 810.845	DPW BM TAG IN W CB 1' N BCR @ NW COR 47TH ST E & AVE R-8	L 5120
PALMDALE (2010)	2,601.359 792.897	2" IP CONC WITH 38 CALIBER SHELL UP 8" 55' N & 50' W/O C/L INT 50TH ST E & AVE Q	L 5121
PALMDALE (2010)	2,518.817 767.738	DPW BM TAG IN 3' DIA CONC PIPE BASE @ SE COR 50TH ST E & AVE N-8 45' S & 30' E/O C/L INT	L 5125
PALMDALE (2010)	2,517.896 767.457	DPW BM TAG IN 3' DIA CONC PIPE BASE @ NW COR 50TH ST E & AVE N-8 30' N & 30' W/O C/L INT	L 5126
PALMDALE (2010)	2,560.560 780.461	2" IP WITH LACE TAG FL @ SW COR 20TH ST W & AVE M-8 49' W & 49' S C/L INT MKR 2' SW/O MON	L 5127
PALMDALE (2010)	2,591.180 789.794	DPW BM TAG IN CONC COLLAR OF A 6'X6' VAULT 55' N & 37' W/O C/L INT 20TH ST W & AVE N	L 5128
PALMDALE (2010)	2,625.420 800.230	DPW BM TAG IN W CB 1' S/O BCR @ SW COR 20TH ST W & AVE N-8 49' S & 45' W/O C/L INT	L 5129
PALMDALE (2010)	2,670.561 813.989	DPW BM TAG IN W CB 1' N/O BCR @ NW COR 10TH ST W & AVE P	L 5132
PALMDALE (2010)	2,622.136 799.229	DPW BM TAG IN SE COR OF CONC VAULT @ NW COR 30TH ST W & AVE N-8, 65' N & 42' W/O C/L INT	L 5134
PALMDALE (2010)	2,651.619 808.216	DPW BM TAG IN W CB 10' N/O BCR @ NW COR 30TH ST W & AVE O	L 5136
PALMDALE (2010)	2,653.669 808.841	DPW BM TAG IN W CB 13' S/O BCR @ SW COR 30TH ST W & AVE O	L 5137
PALMDALE (2010)	2,683.080 817.805	DPW BM TAG IN N CB 8' W/O BCR @ NW COR 30TH ST W & AVE O-8	L 5138
PALMDALE (2010)	2,717.898 828.418	DPW BM TAG IN S CB 5' W/O BCR @ SW COR AVE P & 25TH ST W	L 5142
PALMDALE (2010)	2,718.757 828.680	DPW BM TAG IN S CB 1' E/O BCR @ SE COR AVE P & 25TH ST W	L 5143
PALMDALE (2010)	2,711.491 826.465	DPW BM TAG IN W CB 1' S/O BCR @ SW COR AVE P & 20TH ST W	L 5144
PALMDALE (2010)	2,711.227 826.384	DPW BM TAG IN SE CB RET 5' W/O BCR 61' E 42' S/O C/L INT AVE P & 20TH ST W	L 5145

QUAD YEAR	ELEV FOOT/METER	DESCRIPTION	BM NUMBER
PALMDALE (2010)	2,690.900 820.189	DPW BM TAG IN W CB 1' S/O BCR @ SW COR AVE P & 15TH ST W	L 5146
PALMDALE (2010)	2,689.633 819.803	DPW BM TAG IN N CB 5' E/O BCR @ NE COR AVE P & 15TH ST W	L 5147
PALMDALE (2010)	2,584.036 787.617	DPW BM TAG IN CONC FTG CH LINK FENCE POST @ NE COR AVE P & 15TH ST E 80' N & 50' E C/L INT	L 5148
PALMDALE (2010)	2,585.122 787.948	DPW BM TAG IN CB 207' S & 33' W/O C/L INT AVE P & 15TH ST E	L 5149
PALMDALE (2010)	2,554.055 778.478	DPW BM TAG IN CONC FTG FENCE COR POST @ NW COR AVE P & 40TH ST E 50' N & 30' W/O C/L INT	L 5152
BASELINE (2010)	2,491.647 759.456	DPW BM TAG IN CONC FTG OF CH LINK FENCE POST 50' S/O C/L AVE M & 192' E/O C/L (FUT) 15TH ST E (128' E/O C/L SITE #1 RD)	L 5154
BASELINE (2010)	2,473.613 753.960	DPW BM TAG IN CONC FTG CH LINK FENCE POST @ SW COR AVE M & (FUT) 25TH ST E 49' S & 40' W/O C/L INT 450' W/O DRWY TO SEWAGE TREATMENT PLANT	L 5156
BASELINE (2010)	2,473.898 754.046	DPW BM TAG IN CONC FTG CH LINK FENCE POST @ SE COR AVE M & 30TH ST E 83' E & 49' S/O C/L INT	L 5158
BASELINE (2010)	2,472.438 753.601	2" IP WITH DPM BM TAG 15" DN @ NW COR AVE M & (FUT) 35TH ST E 47' N & 49' W/O C/L INT 3' N/O PP #2297254E	L 5160
BASELINE (2010)	2,474.040 754.090	DPW BM TAG CONC FTG CH LINK FENCE POST @ SE COR AVE M & (FUT) 35TH ST E 49' S & 53' E/O C/L INT	L 5161
BASELINE (2010)	2,474.331 754.178	L&T IN CONC FTG OF CH LINK FENCE POST 368' E & 50' S/O C/L INT AVE M & (FUT) 35TH ST E 70' E/O CTR SITE 4 RD	L 5162
BASELINE (2010)	2,757.450 840.473	L&T IN W CB CROWN VALLEY RD 43' W/O C/L & ¼ MI S/O ALISO ST (28' S/O LT STD #4117960E)	L 5165
BASELINE (2010)	2,761.146 841.600	DPW BM TAG IN W CB CROWN VALLEY RD 43' W/O C/L & 0.20 MI S/O ALISO ST (10' S/O LT STD #4117959E)	L 5166
BASELINE (2010)	2,794.817 851.863	L&T IN W CB @ SW COR CROWN VALLEY RD & ALISO ST 120' S & 43' W/O C/L INT	L 5167
BASELINE (2010)	2,855.698 870.419	DPW BM TAG IN W CB 40'M W/O C/L CROWN VALLEY RD & 950' N/O ALISO ST NR NLY P/L LA CO WW BLDG #33025 @ PP #1847472E	L 5168
BASELINE (2010)	2,933.487 894.130	DPW BM TAG E CB CROWN VALLEY RD 43' E/O C/L & 40' S/O C/L N BOUND ON-RAMP (14 FRWY) 2' S/O BCR @ AM-PM GAS STATION	L 5169
BASELINE (2010)	2,965.521 903.894	RDBM TAG IN N CB, 1' W/O BCR @ NW COR SIERRA HWY & CROWN VALLEY RD 66' W & 43' N/O C/L INT	L 5170
PALMDALE (2010)	2,592.788 790.284	L&T IN CB 1' N/O BCR @ NW COR AVE N & 45TH ST W	L 5174
PALMDALE (2010)	2,563.081 781.229	DPW BM TAG IN N CB 1' W/O BCR @ NW COR AVE N & 40TH ST W	L 5175

QUAD YEAR	ELEV FOOT/METER	DESCRIPTION	BM NUMBER
PALMDALE (2010)	2,580.637 786.581	DPW BM TAG IN N SIDE CONC FTG OF W GUARD POST TO F HYD 35' S & 25' W/O C/L INT AVE N & (FUT) 35TH ST W (@ E P/L HSE #3514)	L 5177
BASELINE (2010)	2,917.362 889.215	CSBM MON IN E END C B 69' E/O BCR @ NE COR 87TH ST E & PEARBLOSSOM HWY MKD (BM 106-20A 1966 RE 5869)	L 5178
BASELINE (2010)	2,781.850 847.910	DPW BM TAG IN E CB 11' S/O BCR @ SE COR AVE T & 87TH ST E	L 5179
BASELINE (2010)	2,747.616 837.476	DPW BM TAG IN N END CONC HDWL 275' S & 24' W/O C/L INT 87TH ST E & AVE S-8 @ MI MKR #19.71	L 5180
BASELINE (2010)	2,688.927 819.587	DPW BM TAG IN CB 1' S/O END @ SE COR 90TH ST E & AVE R-8 62' E & 31' S/O C/L INT	L 5181
BASELINE (2010)	2,667.710 813.120	DPW BM TAG IN NW COR CONC DRWY HSE #9006 AVE R 40' S/O C/L & 137' E/O C/L 90TH ST E	L 5182
BASELINE (2010)	2,619.965 798.568	DPW BM TAG IN TOP OF W SIDE CONC BREATHER PIPE @ SE COR AVE P-8 & 90TH ST E 59' E & 20 S/O C/L INT 85' E/O PP #1103851E	L 5183
BASELINE (2010)	2,557.653 779.575	2" IP WITH DPW BM TAG FLUSH @ NE COR 90TH ST E & AVE N 76' E & 30' N/O C/L INT MKR POST 2' E/O MON	L 5185
BASELINE (2010)	2,528.051 770.552	2" IP WITH DPW BM TAG FLUSH @ NW COR 90TH ST E & AVE M 56' W & 31' N/O C/L INT MKR POST 2' E/O MON	L 5186
PALMDALE (2010)	2,999.596 914.280	DPW BM TAG IN SW COR CONC F HYD PAD 30' N/O C/L SIERRA HWY 0.5MI E/O CROWN VALLEY RD 66' SW/O PP #699555E 125' W/O MI MKR 27.44	L 5450
PALMDALE (2010)	3,030.789 923.787	DPW BM TAG IN SE COR CONC F HYD PAD 30' S/O C/L SIERRA HWY & 0.8MI E/O CROWN VALLEY RD 28' E/O MI MKR 27.19	L 5451
PALMDALE (2010)	3,096.328 943.764	DPW BM TAG IN SW COR CONC ELEC PAD 37' N/O C/L SIERRA HWY & 121' E/O C/L ACTON CYN RD W 1.4MI E/O CROWN VALLEY RD	L 5452
PALMDALE (2010)	3,031.199 923.912	DPW BM TAG IN SW COR CONC WATER VALVE PAD 25' S/O C/L SIERRA HWY & 0.4MI E/O ACTON CYN RD E 18' E/O MI MKR 26.11	L 5453
PALMDALE (2010)	3,010.926 917.733	DPW BM TAG IN N CB 2' E BCR @ NE COR SIERRA HWY & SANTIAGO RD	L 5454
PALMDALE (2010)	3,126.502 952.961	DPW BM TAG N CB ON W P/L OF LA CO FIRE STA #80 1533 SIERRA HWY 13' S/O PP #693454E	L 5455
PALMDALE (2010)	3,162.575 963.956	USGS BM MON @ N END HDWL 38' SE/O C/L SIERRA HWY & 0.45MI W/O VINCENT VIEW RD MKD (4 FMK 1974) @ MI MKR 23.28	L 5457
PALMDALE (2010)	3,235.522 986.190	DPW BM TAG CONC F HYD PAD 43' W C/L SIERRA HWY & 10' N C/L PROD VINCENT VIEW RD (METROLINK STA)	L 5459
PALMDALE (2010)	3,202.691 976.183	USC&GS MON FL IN NE COR CONC TELEPHONE PAD IN PARK & RIDE 49' W/O C/L SIERRA HWY & 121' N/O C/L ENT TO PARK & RIDE	L 5461
PALMDALE (2010)	3,145.469 958.742	DPW BM TAG IN NELY COR CONC ELEC PAD 26' NW/O C/L SIERRA HWY & 0.35MI NE/O ANGELES FOREST HWY 263' NE/O 14 FRWY ON-RAMP NORTH BOUND	L 5462

QUAD YEAR	ELEV FOOT/METER	DESCRIPTION	BM NUMBER
PALMDALE (2010)	2,703.627 824.068	DPW BM TAG IN NWLY COR F HYD PAD 23' N/O C/L SOLEDAD CYN RD & 63' E/O C/L SMITH AVE	L 5464
PALMDALE (2010)	3,087.973 941.217	USC&GS MON 63' WLY C/L SIERRA HWY & 0.6MI SWLY OF PEARBLOSSOM HWY 56' S/O PP (N0#) MKD (M899 1955) MKR POST 2' ELY OF MON 200' N/O MI MRK #21.42	L 5466
PALMDALE (2010)	2,978.440 907.831	USC&GS MON IN CONC 102' SELY C/L PEARBLOSSOM HWY & 79' E/O C/L PROD SIERRA HWY (FROM THE N) MKD (U 899 RESET 1969)	L 5467
PALMDALE (2010)	2,887.140 880.003	LS TAG #3462 IN NLY CB 40' N/O C/L SOLEDAD CYN RD & 37' W/O C/L CHANTADA AVE	L 5468
PALMDALE (2010)	2,810.331 856.591	DPW BM TAG IN HDWL 2' S/O N END 26' SLY C/L ALISO CYN RD & 92' ELY/O C/L SOLEDAD CYN RD @MM 0.02	L 5469
PALMDALE (2010)	2,937.697 895.413	DPW BM TAG IN NE COR CONC MAIL BOX PAD 59' N C/L SOLEDAD CYN RD & 10' W/O C/L JOSHUA AVE	L 5470
PALMDALE (2010)	2,974.092 906.506	DPW BM TAG IN NE COR CONC MAIL BOX PAD 49' N C/L SOLEDAD CYN RD & 25' E/O C/L MALINTA AVE	L 5471
PALMDALE (2010)	2,847.657 867.968	DPW BM TAG IN S CB SHADOW CYN RD 5' E/O BCR 18' S/O C/L & 59' E/O C/L ALISO CYN RD @ C B	L 5474
PALMDALE (2010)	2,868.882 874.438	DPW BM TAG IN S CB EL DORADO DR 3' E/O BCR 18' S/O C/L & 59' E/O C/L ALISO CYN RD	L 5475
PALMDALE (2010)	2,866.554 873.728	DPW BM TAG IN SE COR OF CONC PAD 33' W SIERRA HWY & 18' N/O E RAE ST 10' E/O PP #618613H	L 5478
PALMDALE (2010)	2,855.304 870.299	USC&GS MON 59' E/O C/L SIERRA HWY ACROSS FROM SIERRA MARKET #36153 MKD (Z 429 1935) MKR POST 2' W/O MON	L 5479
PALMDALE (2010)	2,849.665 868.581	USC&GS MON 84' E/O C/L SIERRA HWY & 630' N/O E RAE ST 269' N/O MI MKR 19.60 MKD (Y 429 1935) MKR POST 1' E/O MON	L 5480
PALMDALE (2010)	2,837.636 864.914	USC&GS MON FL 180' NLY/O C/L INT SIERRA HWY & RR TRACKS 53' WLY C/L RR TRACKS MKD (T 429 1935) MKR SIGN 1.5' E/O MON	L 5481
PALMDALE (2010)	2,835.651 864.309	USC&GS MON FL 330' NLY FROM INT SIERRA HWY & RR TRACKS (ALONG TRACKS) & 53' WLY C/L RR TRACKS MKD (S 429 1935) MKR SIGN 1' E/O MON	L 5482
PALMDALE (2010)	2,826.562 861.539	USC&GS MON 6" UP 141' W/O C/L SIERRA HWY & 0.17MI N/O C/L BARREL SPRINGS RD 38' E/O RR TRACKS MKD (H 429 1935) MKR POST 2' E/O MON OPP HSE #36528	L 5483
PALMDALE (2010)	2,825.827 861.315	USC&GS MON FL 105' W/O C/L SIERRA HWY & 49' S/O C/L BARREL SPRINGS RD FR THE E 59' E/O RR TRACKS MKD (F 429 1935) MKR POST 2' E/O MON	L 5484
PALMDALE (2010)	2,809.104 856.217	USC&GS MON 1' UP 82' W C/L SIERRA HWY & 0.5MI S/O C/L AVE S 43' WLY PP (NO#) MKD (S 428 1935) MKR POST 1.5' S/O MON	L 5485
PALMDALE (2010)	2,813.625 857.595	USC&GS MON 95' W/O C/L SIERRA HWY & 0.31MI S/O C/L AVE S 59' SW/O PP #1162228E MKD (J 811 1947) MKR POST 2' N/O MON	L 5486

QUAD YEAR	ELEV FOOT/METER	DESCRIPTION	BM NUMBER
PALMDALE (2010)	2,678.623 816.447	DPW BM TAG IN W CB @ BLDG #37839 SIERRA HWY 33' W/O C/L & 50' N/O C/L DRWY 3' S/O END CB	L 5488
PALMDALE (2010)	2,652.433 808.464	DPW BM TAG IN E CB SIERRA HWY 30' E/O C/L & 335' N/O C/L AVE Q-6 N SIDE DRWY ENT TO LIBRARY	L 5490
PALMDALE (2010)	2,641.873 805.245	DPW BM TAG IN E CB SIERRA HWY 49' E/O C/L & 95' S/O C/L AVE Q 3' S/O CB END	L 5491
PALMDALE (2010)	2,631.483 802.078	DPW BM TAG IN W CB SIERRA HWY 38' W/O C/L & 0.2MI N/O C/L AVE Q @ LT STD #4107534E	L 5492
PALMDALE (2010)	2,616.633 797.552	DPW BM TAG IN N END HDWL 66' E/O C/L SIERRA HWY & 760' N/O AVE P-8 7M N/O MI MKR 15.37	L 5493
PALMDALE (2010)	2,621.025 798.891	DPW BM TAG IN NE CB RET 2' W/O BCR SIERRA HWY & AVE P	L 5494
PALMDALE (2010)	2,611.320 795.933	L&BR IN W CB SIERRA HWY 50' W/O C/L & 0.43MI N/O AVE P SLY P/L BLDG #39959 2' S/O C B	L 5495
PALMDALE (2010)	2,595.970 791.254	DPW BM TAG IN NE COR CONC DRAIN PAD @ SW COR SIERRA HWY & AVE O 26' S & 141 W/O C/L INT (NR MI MRK #0.34)	L 5496
PALMDALE (2010)	2,565.594 781.995	DPW BM TAG IN SE COR CONC PAD @ NW COR SIERRA HWY & AVE N 164' W & 62' N/O C/L INT	L 5499
PALMDALE (2010)	2,545.279 775.803	DPW BM TAG IN N CB 1' W BCR @ NW COR SIERRA HWY & SIERRA CT	L 5500
PALMDALE (2010)	2,892.957 881.776	DPW BM TAG IN N CB 3' E/O END OF CB 30' N/O C/L PEARBLOSSOM HWY 0.33MI E/O C/L BARREL SPRINGS RD 8' W/O LT STD #4144415E	L 5502
PALMDALE (2010)	2,828.462 862.118	DPW BM TAG IN N CB 3' W/O BCR @ NW COR 33RD ST E & PEARBLOSSOM HWY	L 5503
PALMDALE (2010)	2,797.847 852.786	DPW BM TAG IN SW COR CONC PAD FOR WATER VALVE 45' N/O C/L PEARBLOSSOM HWY & 49' W/O C/L 37TH ST E	L 5504
PALMDALE (2010)	2,797.265 852.609	DPW BM TAG IN N CB 1' E/O BCR @ NE COR 37TH ST E & PEARBLOSSOM HWY	L 5505
PALMDALE (2010)	2,764.293 842.559	DPW BM TAG IN W END HDWL 62' N C/L PEARBLOSSOM HWY & 46' W/O C/L 47TH ST E	L 5507
PALMDALE (2010)	2,844.385 866.971	2" IP W/CONC PLUG & DPW TAG 46' S/O C/L PEARBLOSSOM HWY & 1.43MI SELY AVE T 2' W/O PP #4145769E	L 5514
PALMDALE (2010)	2,912.264 887.661	DPW BM TAG IN SW COR CONC DRWY TO HSE #35022 82ND ST E 0.2MI S/O C/L PEARBLOSSOM HWY	L 5516
PALMDALE (2010)	3,009.101 917.177	DPW BM TAG IN HDWL 3' W/O CTR 30' S/O C/L FORT TEJON RD & 0.3MI E/O AVE V @ MI MKR #0.31	L 5518
PALMDALE (2010)	3,183.298 970.272	2" IP W/CONC PLUG & DPW TAG 40' S/O C/L FORT TEJON RD & 0.4MI E/O 96TH ST E MKR POST 1' S MON	L 5519

QUAD YEAR	ELEV FOOT/METER	DESCRIPTION	BM NUMBER
PALMDALE (2010)	3,258.471 993.185	2" IP W/CONC PLUG & DPW BM TAG FL 63' SLY C/L FORT TEJON RD & 50' W/O C/L 103RD ST E & 0.3MI E/O C/L 101ST ST E 4' S/O PP (#928709E)	L 5520
BASELINE (2010)	2,926.865 892.111	CAL-TRANS TAG IN N CB PEARBLOSSOM HWY 40' N/O C/L & 30' W/O C/L 89TH ST E	L 5524
BASELINE (2010)	2,525.715 769.840	BM TAG S SIDE CONC FTG METAL PP #22977993 @ NW COR AVE M & 20TH ST W 49' N & 49' W/O C/L INT	L 5526
BASELINE (2010)	2,577.613 785.659	CS MON IN WELL 1.5' DN @ C/L INT 90TH ST E & AVE O	L 5528
BASELINE (2010)	2,475.664 754.585	DPW BM TAG IN NE COR OF CONC BASIN @ NE COR AVE M & 40TH ST E	L 5537
PALMDALE (2010)	2,639.580 804.546	DPW BM TAG IN E CB 1' N/O BCR @ NE COR 30TH ST E & AVE R-4	L 5539
PALMDALE (2010)	2,594.015 790.658	DPW BM TAG IN E CB 1' N/O BCR @ NE COR 30TH ST E & AVE Q-4	L 5541
PALMDALE (2010)	2,683.529 817.942	DPW BM TAG IN S CB 1' W/O BCR @ SW COR 47TH ST E (HWY 138) & AVE S	L 5544
PALMDALE (2010)	2,716.995 828.143	L&T IN ELY CB FORT TEJON RD (HWY 138) 40'M E C/L & 26' SLY/O C/L PROD AVE S-8 3M N/O END CB	L 5545
PALMDALE (2010)	2,672.089 814.455	DPW BM TAG IN N CB 1' W/O BCR @ NW COR 40TH ST E & AVE S	L 5546
PALMDALE (2010)	2,678.358 816.366	DPW BM TAG IN N CB 1' E/O BCR @ NE COR AVE S & 35TH ST E (TO THE N)	L 5548
PALMDALE (2010)	2,684.167 818.137	DPW BM TAG IN N CB 3' W/O BCR @ NW COR AVE S & 27TH ST E	L 5549
PALMDALE (2010)	2,840.395 865.755	DPW BM TAG IN N CB 1' E/O BCR @ NW COR ISLE ELY MOST ENT TO PARK & RIDE E/O ANTELOPE VALLEY (14) FRWY 16' S/O C/L AVE S	L 5554
PALMDALE (2010)	2,577.323 785.570	DPW BM TAG IN E CB 20' N/O C/L NLY DRWY TO BLDG #38950 30TH ST E 40' E/O C/L	L 5557
PALMDALE (2010)	2,557.442 779.511	LA CO DPW TAG IN E CB @ S P/L OF BLDG #39516 30TH ST E 40' E/O C/L IN FRT PP #2301445E	L 5558
PALMDALE (2010)	2,893.732 882.012	DPW BM TAG IN SE COR CONC MAIL BOX PAD @ NE COR 50' N/O C/L BARREL SPRINGS RD & 20' E/O C/L HAROLD 5TH ST	L 5559
PALMDALE (2010)	2,885.652 879.549	DPW BM TAG IN S CB 1' E BCR @ SE COR BARREL SPRINGS RD & EDGEWATER RD	L 5560
PALMDALE (2010)	3,073.526 936.814	LS TAG #5056 IN S CB 1' W/O BCR @ SW COR BARREL SPRINGS RD & VISTA DEL LARGO	L 5561
PALMDALE (2010)	3,123.775 952.129	DPW BM TAG IN S CB 1' E BCR @ SE COR BARREL SPRINGS RD & TIERRA SUBIDA AVE	L 5562

QUAD YEAR	ELEV FOOT/METER	DESCRIPTION	BM NUMBER
PALMDALE (2010)	3,123.367 952.005	DPW BM TAG IN SE COR CONC F HYD PAD @ NE COR BARREL SPRINGS RD & TIERRA SUBIDA AVE 46' E & 33' N/O C/L INT	L 5563
PALMDALE (2010)	3,032.111 924.190	DPW BM TAG IN SE COR CONC MAIL BOX PAD @ NE COR TIERRA SUBIDA AVE & HACIENDA DR 23' N & 36' E/O C/L INT	L 5564
PALMDALE (2010)	2,803.947 854.646	DPW BM TAG IN E CB TIERRA SUBIDA AVE 1' N/O BCR 38' E/O C/L & 59' N/O C/L SLY MOST DRWY ENT TO PELONA VISTA PARK	L 5565
PALMDALE (2010)	2,688.376 819.419	DPW BM TAG S CB 1' E/O BCR @ SE COR DIVISION ST & PALMDALE BLVD	L 5566
PALMDALE (2010)	2,615.322 797.153	DPW BM TAG IN E CB 1' S/O BCR @ SE COR 20TH ST E & PALMDALE BLVD	L 5569
PALMDALE (2010)	2,604.998 794.006	DPW BM TAG IN CTR HDWL 43' S/O C/L PALMDALE BLVD & 23' E/O C/L PROD 37TH ST E	L 5570
PALMDALE (2010)	2,555.859 779.028	DPW BM TAG IN S CB AVE P 40' S/O C/L & 17' W/O C/L ELY MOST DRWY TO BLDG #3620 (GOLF COURSE)	L 5572
PALMDALE (2010)	2,557.000 779.376	DPW BM TAG IN N CB AVE P 30' N/O C/L & 20' W/O C/L WLY MOST DRWY ENT TO BLDG #2715	L 5574
PALMDALE (2010)	2,570.220 783.405	DPW BM TAG IN CTR HDWL @ NE COR AVE P & 20TH ST E 69' N & 33' E/O C/L INT	L 5575
PALMDALE (2010)	2,571.436 783.776	DPW BM TAG IN SE COR CONC SIGNAL BOX PAD @ NW COR AVE P & 20TH ST E 66'M W & 46' N/O C/L INT	L 5576
PALMDALE (2010)	2,596.308 791.357	L&T IN CTR HDWL @ SE COR AVE P & 10TH ST E 43' E & 43' S/O C/L INT	L 5577
PALMDALE (2010)	2,603.161 793.446	L&T IN W CB @ BCR SW COR AVE P & 8TH ST E 69' S & 31' W/O C/L INT	L 5578
PALMDALE (2010)	2,640.863 804.937	CO ENG TAG IN SW COR CONC PAD @ NE COR AVE P & DIVISION ST 63' N& 56' E/O C/L INT	L 5579
PALMDALE (2010)	2,651.733 808.251	L&T IN NW CB RET 10' E/O BCR 43' N & 33' W/O C/L INT AVE P & FAIRWAY DR	L 5580
PALMDALE (2010)	2,676.410 815.772	DPW BM TAG IN N CB 3' W/O BCR @ NW COR AVE P & K-MART CENTER	L 5581
PALMDALE (2010)	2,671.225 814.192	L&T IN N CB 1' E/O BCR @ NE COR AVE P & 10TH ST W	L 5582
PALMDALE (2010)	2,678.585 816.435	DPW BM TAG IN S CB 3' W/O BCR @ SW COR AVE P & ARMFIELD AVE	L 5583
PALMDALE (2010)	2,702.967 823.867	L&BR IN S CB 1' W/O BCR @ SW COR AVE P & DUNBAR ST	L 5584
PALMDALE (2010)	2,705.674 824.692	L&T IN S CB 1' E/O BCR @ SE COR AVE P & 22ND ST W	L 5585
PALMDALE (2010)	2,714.440 827.364	DPW BM TAG IN S CB 3' E/O BCR @ SE COR AVE P & 28TH ST W	L 5586

QUAD YEAR	ELEV FOOT/METER	DESCRIPTION	BM NUMBER
PALMDALE (2010)	2,697.811 822.295	DPW BM TAG IN E CB AVE 0-12 (PVT) 18' S/O C/L & 43' E/O C/L 30TH ST W @ LT STD #4261401E	L 5587
PALMDALE (2010)	2,668.082 813.234	L&T IN W CB 30TH ST W 34' W/O C/L & 30' N/O C/L AVE 0-4 (PVT) @ LT STD #4179925E	L 5588
PALMDALE (2010)	2,638.556 804.234	DPW BM TAG IN W CB 30TH ST W 40' W/O C/L & 13' S/O C/L AVE N-12 (80' S/O BCR @ SW COR CLUB RANCHO DR)	L 5589
PALMDALE (2010)	2,603.800 793.641	DPW BM TAG IN SW COR OF DRWY TO HSE #4142 30TH ST W 49' E/O C/L & 112' N/O C/L AVE N-4	L 5590
BASELINE (2010)	3,324.484 1,013.306	L&T IN S END CONC HDWL 15' E/O C/L ELIZABETH LAKE RD & 330' S/O C/L JOHNSON RD	L 5591
BASELINE (2010)	3,478.378 1,060.213	LACO BM TAG IN E END CONC HDWL 15' N/O C/L JOHNSON RD & 105' E/O C/L DRWY TO HSE #12601 @ MI MKR #12.54	L 5592
BASELINE (2010)	2,951.884 899.737	CSBM MON IN SLY END CONC HDWL 63' N/O C/L JOHNSON RD & 20' W/O C/L ENT TO AQUEDUCT 0.4MI W/O 110TH ST W	L 5593
BASELINE (2010)	2,918.262 889.489	DWR MON DN 8" 30' SLY C/L JOHNSON RD & 0.3MI W/O 110TH ST W 56' S/O PP #2109682E MKD (M3-159 1968) MKR PIPE 1' N/O MON	L 5594
BASELINE (2010)	2,715.920 827.815	LACO BM TAG IN W END ELY ROCK & CONC WALL 22' N/O C/L AVE L & 10' E/O C/L 95TH ST W	L 5595
BASELINE (2010)	2,720.275 829.142	2" IP W/CONC PLUG & CE TAG FLUSH 40' W & 36' S/O C/L INT AVE L & 95TH ST W	L 5596
BASELINE (2010)	2,957.656 901.496	DWR MON IN TOP OF N CHANNEL WALL CALIF AQUEDUCT 112' NWLY/O NW COR 90TH ST W BRIDGE MKD (333.8 BR 1987)	L 5598
BASELINE (2010)	2,612.370 796.253	LACO BM TAG IN N CB 3' E/O BCR @ NE COR AVE M & 70TH ST W	L 5599
BASELINE (2010)	2,586.246 788.290	L&T IN N CB @ BCR NE COR AVE M & 67TH ST W 56' E & 33'M N/O C/L INT	L 5600
BASELINE (2010)	2,537.217 773.346	LACO BM TAG IN N CB 3' W/O BCR @ NW COR AVE M & 62ND ST W 49' W & 40' N/O C/L INT	L 5601
BASELINE (2010)	2,495.569 760.652	LACO DPW TAG IN NE CB RET @ AVE M & 50TH ST W 49' N & 30' E/O C/L INT	L 5602
BASELINE (2010)	2,521.307 768.497	LACO BM TAG IN NE COR CONC PAD 60' S/O C/L AVE M & 20'M W/O C/L DOUBLE GATE DRWY 0.3MI E/O 40TH ST W	L 5603
BASELINE (2010)	2,523.187 769.070	L&T IN N CB @ BCR NW COR AVE M & 22ND ST W 46' W & 37' N/O C/L INT	L 5604
PALMDALE (2010)	2,663.066 811.705	DIV HWY TAG IN E CB 15' N/O BCR 40' E/O C/L 10TH ST W & 89' N/O C/L ON-RAMP (14) FRWY	L 5606
PALMDALE (2010)	2,641.221 805.047	DEPT OF TRANS DISC IN WALK @ SW COR BRIDGE OVER (14) FRWY 22' S/O C/L AVE O MKD (GPS 0036 1991)	L 5607

QUAD YEAR	ELEV FOOT/METER	DESCRIPTION	BM NUMBER
PALMDALE (2010)	2,654.889 809.213	DPW BM TAG IN NW COR OF DRWY TO HSE #1754 AVE O 100' S/O C/L & 30' E/O C/L 18TH ST W	L 5608
PALMDALE (2010)	2,631.921 802.212	DPW BM TAG IN W CB 5' S/O S P/L HSE #40711 20TH ST W 40' W/O C/L	L 5609
PALMDALE (2010)	2,542.247 774.879	DPW BM TAG IN NE COR DRWY TO HSE #41809 20TH ST W 40' W/O C/L & 102' N/O C/L AVE M-4	L 5610
BASELINE (2010)	2,670.193 813.877	CS MON IN WELL @ C/L INT AVE M & 75TH ST W MKD (1/4 SEC COR 33,4,T7N,T6N,13W)	L 5611
PALMDALE (2010)	2,594.870 790.919	DPW BM TAG IN S EDGE CONC DRWY TO HSE #2714 AVE N 78' S/O C/L & 28' W/O C/L 27TH ST W	L 5612
PALMDALE (2010)	2,568.213 782.794	DPW BM TAG IN S CB AVE N 44' E/O C/L DRWY TO HSE #3830 40' S/O C/L @ PP (0.16MI E/O C/L 40TH ST W)	L 5613
PALMDALE (2010)	2,562.801 781.144	DPW BM TAG IN N CB 100' W/O BCR @ NW COR AVE N & 40TH ST W 164' W & 38' N/O C/L INT	L 5614
PALMDALE (2010)	2,631.730 802.154	L&T IN S CB 2.5' W/O BCR @ SW COR 3RD ST W PICTORIAL ST 44' W & 16' S/O C/L INT	L 5615
PALMDALE (2010)	2,689.664 819.812	DPW BM TAG IN S CB 15' W/O BCR @ SW COR AVE N & 55TH ST W @ E END C B	L 5616
PALMDALE (2010)	2,689.397 819.731	DPW BM TAG IN N CB 1' W/O BCR @ NW COR AVE N & 55TH ST W	L 5617
PALMDALE (2010)	2,569.843 783.291	DPW BM TAG IN W CB 60TH ST W 40' W/O C/L & 33' S/O C/L PROD AVE M-4 @ LT STD #4143330E	L 5618
PALMDALE (2010)	3,467.393 1,056.865	DPW BM TAG IN ROCK & CONC WALL 1' W/O E END @ 13500 ELIZABETH LAKE RD (PITCH FORK RANCH) 20' S/O C/L & 33'M E/O C/L DRWY ENT	L 5619
PALMDALE (2010)	3,241.585 988.038	DPW BM TAG IN TOP OF WLY BRICK WALL 6' S/O N END @ ENT TO 10512 ELIZABETH LAKE RD 29' S C/L & 16' W/O C/L DRWY	L 5620
PALMDALE (2010)	3,224.231 982.749	DPW BM TAG IN W END CONC HDWL 18' S/O C/L ELIZABETH LAKE RD & 0.22MI E/O DRWY TO HSE #10512 49' W/O PP (NO #) @ MI MKR #11.36	L 5621
PALMDALE (2010)	3,227.575 983.768	L&BN 2' E/O W END HDWL 16' N/O C/L ELIZABETH LAKE RD & 1.4MI W/O 90TH ST W @ RD MKR #11.04	L 5622
PALMDALE (2010)	3,133.899 955.215	DPW BM TAG IN CTR CONC HDWL @ NE COR 90TH ST W & ELIZABETH LAKE RD 33' N & 18' E/O C/L INT	L 5623
PALMDALE (2010)	3,092.605 942.629	DPW BM TAG 3' W/O E SIDE DRWY TO HSE #8333 ELIZABETH LAKE RD 16' N/O C/L & 0.60MI E/O 90TH ST W	L 5624
PALMDALE (2010)	2,683.827 818.033	CS MON 16' SELY/O SE COR OF CO WELL STATION @ 41431 N 60TH ST W 8' W/O W CF & 0.30MI N/O AVE N MKD (SE LOT COR RE 7078)	L 5626
PALMDALE (2010)	3,038.524 926.145	DPW BM TAG IN E END CONC HDWL 28' N/O C/L ELIZABETH LAKE RD & 0.42MI E/O C/L GODDE HILL RD	L 5627

QUAD YEAR	ELEV FOOT/METER	DESCRIPTION	BM NUMBER
PALMDALE (2010)	3,032.821 924.407	DPW BM TAG IN E END CONC HDWL 29' N/O C/L ELIZABETH LAKE RD & 0.80MI E/O GODDE HILL RD @ MI MRK #7.16	L 5628
PALMDALE (2010)	2,762.897 842.134	L&T IN S CB ELIZABETH LAKE RD 46' S/O C/L ON C/L PROD DIANRON RD	L 5631
PALMDALE (2010)	2,813.138 857.447	DPW BM TAG @ SE COR CONC PAD OF FH 26' N/O C/L SOLEDAD CYN RD & 0.30MI W/O KASHMERE CYN & 63' W/O MI MRK #24.60	L 6200
PALMDALE (2010)	3,060.200 932.752	DPW BM TAG @ SE COR CONC RIM OF PANEL BOX 33' S/O C/L SOLEDAD CYN RD & 0.3MI W/O SIERRA HWY & 30' E/O PP#1373513E	L 6201
PALMDALE (2010)	3,165.167 964.746	2" IP W/CONC PLUG & DPW BM TAG FL 6' E/O PP(NO#) WITH TWO GUY WIRES & 56' N/O C/L SIERRA HWY & 92' W/O MI MRK #23.88 (0.26MI E/O SOLEDAD CYN RD)	L 6202
PALMDALE (2010)	3,209.663 978.308	DPW BM TAG IN SE COR CONC PAD ELEC BOX 7' W/O PP#1634692E 56' W/O C/L SIERRA HWY & 300' S/O MI MRK #22.30	L 6203
PALMDALE (2010)	3,207.180 977.551	DPW BM TAG IN N END HDWL 28' E/O C/L SIERRA HWY @ MI MKR #22.15 +/-1000' S/O ANGELES FOREST HWY	L 6204
PALMDALE (2010)	3,050.706 929.858	DPW BM TAG IN CTR HDWL 36' E/O C/L SIERRA HWY @ MI MKR #21.17 (0.4MI S/O PEARBLOSSOM HWY)	L 6205
PALMDALE (2010)	3,061.619 933.184	USC&GS MON UP 4" 72' W/O C/L SIERRA HWY & 318' NE/O N BLDG LINE (#34900) MKD (P899-1955) MRK POST 2' E/O MON (0.5MI S/O PEARBLOSSOM HWY)	L 6206
PALMDALE (2010)	2,934.944 894.574	DPW BM TAG IN CONC PORCH @ NW COR 50' E/O C/L SIERRA HWY 0.25MI N/O PEARBLOSSOM HWY @ BLDG #35464	L 6207
PALMDALE (2010)	2,908.798 886.604	DPW BM TAG IN CONC CB OF PLANTER 5' N/O S END @ BLDG #35656 0.5MI E/O PP#2370878E 60' E/O C/L SIERRA HWY (0.45MI N/O PEARBLOSSOM HWY)	L 6208
PALMDALE (2010)	2,869.983 874.773	DPW BM TAG IN S END CONC HDWL 25' E/O C/L SIERRA HWY @ MI MRK #19.76 (OPP ANT. VALLEY WATER AG'Y) #36007	L 6209
PALMDALE (2010)	2,759.174 840.999	DPW BM TAG IN E CB 1' S/O BCR @ SE COR SIERRA HWY & AVE S	L 6210
PALMDALE (2010)	2,658.341 810.265	DPW BM TAG IN E CB 3' S/O BCR @ SE COR SIERRA HWY & PALMDALE BL	L 6211
PALMDALE (2010)	2,657.261 809.936	DPW BM TAG IN E CB 3' N/O BCR (X) @ NE COR SIERRA HWY & PALMDALE BL	L 6212
PALMDALE (2010)	2,615.562 797.226	DPW BM TAG IN E CB 1' S/O SLY ANGLE PT (BUS LOAD PAD) 28' E/O C/L SIERRA HWY & 0.25MI N/O C/L AVE P	L 6213
PALMDALE (2010)	2,598.533 792.035	DPW BM TAG IN E CB 1' S/O TOP X 36' E/O C/L SIERRA HWY & 38' N/O C/L PROD AVE O	L 6215
PALMDALE (2010)	2,598.235 791.944	DPW BM TAG IN E CB 2' N/O N END PARKWAY DRAIN 35' E/O C/L SIERRA HWY 0.2MI N/O AVE O	L 6216
PALMDALE (2010)	2,580.267 786.468	DPW BM TAG IN E CB 35' E/O C/L SIERRA HWY & 0.6MI N/O C/L AVE O	L 6217

QUAD YEAR	ELEV FOOT/METER	DESCRIPTION	BM NUMBER
PALMDALE (2010)	2,564.120 781.546	DPW BM TAG IN E CB 35' E/O C/L SIERRA HWY & 7' N/O C/L PROD AVE N	L 6218
PALMDALE (2010)	2,559.051 780.001	DPW BM TAG IN S END HDWL 36' W/O C/L SIERRA HWY & 0.2MI N/O AVE N (NR MI MRK #12.75)	L 6219
PALMDALE (2010)	2,986.547 910.302	DPW BM TAG IN E CB @ SE COR OF BRIDGE #B1269 OVER SPRR 3' N/O END OF BRIDGE & 28' E/O C/L PEARBLOSSOM HWY	L 6220
PALMDALE (2010)	2,989.730 911.272	DPW BM TAG IN BACK OF WALK @ NE COR BRIDGE #B1269 OVER SPRR 3' S/O END OF BRIDGE & 38'M E/O C/L PEARBLOSSOM HWY	L 6221
PALMDALE (2010)	2,963.634 903.318	DPW BM TAG IN E CB 1' N/O BCR @ NE COR PEARBLOSSOM HWY & OLD NADEAU RD 25' E/O & 40' N/O C/L INT	L 6222
PALMDALE (2010)	2,953.045 900.091	DPW BM TAG IN E CB 25' E/O C/L PEARBLOSSOM HWY & 290' N/O OLD NADEAU RD (1' S/O BCR)	L 6223
PALMDALE (2010)	2,934.120 894.322	LA CO ENG BM MON FL 60' E/O C/L PEARBLOSSOM HWY & 650' S/O BARREL SPRINGS RD MRK POST 2' W/O MON MKD (BM 125-3 1968 RE 5869)	L 6224
PALMDALE (2010)	2,895.387 882.517	DPW BM TAG IN SW COR CONC SLAB (ELEC BOX) @ NE COR PEARBLOSSOM HWY & BARREL SPRINGS RD	L 6225
PALMDALE (2010)	2,754.957 839.713	DPW BM TAG IN W END OF HDWL 46' S/O C/L PEARBLOSSOM HWY & 0.25MI E/O 50TH ST E (OPP W END PARK LOT SWAP MEET) @ MI MRK #4.15	L 6226
PALMDALE (2010)	2,758.108 840.674	DPW BM TAG IN CTR (N SIDE) CONC PAD FIRE HYD @ SW COR PEARBLOSSOM HWY & FT TEJON RD & AVE T 45' S/O & 160' W/O INT	L 6227
PALMDALE (2010)	2,736.950 834.225	DPW BM TAG IN N END HDWL 44' E/O C/L FT TEJON RD & 220' NW/O C/L INT W/SPRR OVERPASS (0.4MI NW/O C/L PEARBLOSSOM HWY INT)	L 6229
PALMDALE (2010)	2,736.337 834.038	DPW BM TAG IN N END HDWL 44' W/O C/L FT TEJON RD & 220' NW/O C/L INT W/SPRR OVERPASS (0.4MI NW/O C/L PEARBLOSSOM HWY)	L 6230
PALMDALE (2010)	2,705.417 824.614	DPW BM TAG IN ELY CB 10' S/O BCR @ SE COR OF ESSEX DR & FT TEJON RD 56' S/O & 43' E/O C/L INT	L 6231
PALMDALE (2010)	2,688.571 819.479	DPW BM TAG IN E CB 3' S/O BCR @ SE COR 47TH ST E (FT TEJON RD) @ ENT TO MALL 66' S & 60' E/O C/L INT (1000' S/O AVE S)	L 6232
PALMDALE (2010)	2,683.250 817.857	DPW BM TAG IN E CB 10' S/O BCR @ SE COR 47TH ST E (FT TEJON RD) & AVE S	L 6233
PALMDALE (2010)	2,650.827 807.975	DPW BM TAG IN E CB 3' S/O BCR @ SE COR 47TH ST E & AVE R-4	L 6234
PALMDALE (2010)	2,649.357 807.526	DPW BM TAG @ E END OF CONC RIBBON N/O C/L PALMDALE BL 18' & 40' SW/O PP#4040111E @ N EDGE OF AC (+/-0.6MI NE/O C/L 80TH ST E)	L 6236
PALMDALE (2010)	2,564.422 781.638	DPW BM TAG IN FENCE POST FTG @ ANG PT OF NW COR AVE P & 50TH ST E 57' N & 122' W/O C/L INT	L 6237

QUAD YEAR	ELEV FOOT/METER	DESCRIPTION	BM NUMBER
PALMDALE (2010)	2,533.910 772.338	REBAR NIPPLE IN CONC BASE 6" DN @ SW COR 50TH ST E & AVE O 49' W/O & 100' S/O C/L INT MKR POST 2' W/O MON	L 6238
PALMDALE (2010)	2,693.734 821.053	DPW BM TAG IN S CB 1' E/O BCR @ SE COR 25TH ST E & AVE S	L 6240
PALMDALE (2010)	2,759.737 841.170	DPW BM TAG IN S CB (@ W END C.B.) @ SW COR SIERRA HWY & AVE S	L 6242
PALMDALE (2010)	2,609.567 795.398	DPW BM TAG @ W END OF HDWL 44' S/O C/L PALMDALE BL & 28' W/O 28TH ST E	L 6243
PALMDALE (2010)	2,610.297 795.621	DPW BM TAG IN S CB 3' E/O BCR @ SE COR PALMDALE BL & 40TH ST E	L 6245
PALMDALE (2010)	2,561.370 780.708	DPW BM TAG IN CONC FTG 2ND POST W/O CTR GATE 40' S/O C/L AVE P & 25' W/O C/L MON 45TH ST E (FUT)	L 6248
PALMDALE (2010)	2,854.827 870.154	DPW BM TAG IN E SIDE OF LIGHT STD 3' N/O N CB SERV RD OF PARK AND RIDE 18' E/O BCR @ NW COR & W MOST ENT/EXIT 95' S/O AVE S	L 6249
PALMDALE (2010)	2,798.584 853.011	DPW BM TAG IN SW COR OF GRATE (DROP INLET) @ NW COR AVE S & 5TH ST E 30' N & 94' W/O C/L INT	L 6250
PALMDALE (2010)	2,796.239 852.296	DPW BM TAG IN E CB 3' N/O BCR @ NE COR AVE S & 5TH ST E	L 6251
PALMDALE (2010)	2,785.196 848.930	DPW BM TAG IN E CB 3' S/O END OF CB 50' E/O C/L RAYBURN AV & 285' N/O C/L DRWY ENT TO PARK & RIDE AND 0.17MI NE/O C/L INT TIERRA SUBIDA AV	L 6252
PALMDALE (2010)	2,806.684 855.480	DPW BM TAG IN E CB 1.5' N/O END OF CB 10' S/O BCR @ SE COR TIERRA SUBIDA AV & S MOST DRWY ENT TO PELOMA VISTA PARK (NR C/L PROD AVE R-8)	L 6253
PALMDALE (2010)	2,631.169 801.983	L & BN IN S CB 3' W/O BCR @ SW COR RANCHO VISTA BL (AVE P) & 3RD ST E 57' W & 33' S/O C/L INT	L 6254
PALMDALE (2010)	2,686.948 818.984	DPW BM TAG IN W CB 3' S/O BCR @ SW COR 10TH ST W & AMARGOSA PL 60' S & 53' W/O C/L INT	L 6255
PALMDALE (2010)	2,700.577 823.138	L&T IN W CB 1' S/O BCR @ SW COR 10TH ST W & YUCCA TREE ST	L 6256
PALMDALE (2010)	2,655.911 809.524	DPW BM TAG IN E CB 3' S/O BCR @ SE COR 10TH ST W & AVE O-8	L 6257
PALMDALE (2010)	2,655.086 809.273	DPW BM TAG @ ANG PT E END HDWL CULVERT @ NW COR AVE O & 20TH ST W 45' N & 32' W/O C/L INT (@ MI MRK #2.01)	L 6259
PALMDALE (2010)	2,608.206 794.984	DPW BM TAG IN SE COR CONC DRWY HSE#2021 AVE N-4 30' N/O C/L & 90' W/O C/L 20TH ST W	L 6260
PALMDALE (2010)	2,583.859 787.563	DPW TAG IN FTG W GUARD POST OF F HYD 38' S/O C/L AVE N & 49' E/O C/L E GATE ENT TO HSE #3312 5' W/O E P/L	L 6261
PALMDALE (2010)	2,578.566 785.949	DPW BM TAG S SIDE OF CONC DRAIN CHANNEL 36' N/O C/L AVE N OPP C/L HSE #4304 & 660' E/O C/L 45TH ST W	L 6262

QUAD YEAR	ELEV FOOT/METER	DESCRIPTION	BM NUMBER
PALMDALE (2010)	2,643.099 805.619	DPW BM TAG IN S CB 3' E/O BCR @ SE COR AVE N & 50TH ST W	L 6263
PALMDALE (2010)	2,676.743 815.874	CS MON UP 4" @ NE PROP COR OF WELL STA. #41431 8' W/O W C.F. & 60' W/O C/L 60TH ST W & 0.3MI N/O AVE N	L 6264
PALMDALE (2010)	2,621.656 799.083	DPW BM TAG IN E CB 3' S/O BCR @ SE COR AVE M-8 & 60TH ST W	L 6265
PALMDALE (2010)	2,712.351 826.727	DPW BM TAG IN S CB 12' E/O BCR @ SE COR AVE P & 30TH ST W	L 6266
PALMDALE (2010)	2,622.700 799.401	DPW BM TAG IN W CB4' S/O BCR @ SW COR 30TH W & AVE N-8	L 6267
PALMDALE (2010)	2,772.132 844.948	DPW BM TAG IN S CB ELIZABETH LAKE RD 49' S/O C/L @ NEAR C/L PROD 25TH ST W	L 6270
PALMDALE (2010)	2,755.109 839.760	DPW BM TAG IN S CB 28' E/O BCR @ SE COR ELIZABETH LAKE RD & LOUISE LN	L 6271
PALMDALE (2010)	3,172.060 966.847	DPW BM TAG IN SW COR OF W DRIVE HSE#9231 ELIZABETH LAKE RD 18' N/O C/L	L 6272
PALMDALE (2010)	3,186.190 971.154	DPW BM TAG IN W END HDWL 15' N/O C/L ELIZABETH LAKE RD @ MI MRK #10.52	L 6273
PALMDALE (2010)	3,306.990 1,007.974	DPW BM TAG IN W END HDWL 15' N/O C/L ELIZABETH LAKE RD @ MI MRK #12.48	L 6274
BASELINE (2010)	2,723.102 830.004	LA CO DPW TAG, E CURB CROWN VALLEY RD @ S'LY END OF N'LY DRWY HSE #32248	L 7174
PALMDALE (2010)	2,701.077 823.291	LA CO BM DISC MRK'D 7200, NE COR CONC SLAB , N'LY SIDE OF WATER BLDG, 50' S/O SOLODAD CYN RD & 200' E/O CROWN VALLEY RD	L 7200
PALMDALE (2010)	2,930.895 893.339	LA CO BM TAG IN CONC DRN, 6' E/O W/END N'LY APRON OF AVE Y-8 & ALISO CYN RD	L 7201
PALMDALE (2010)	2,966.454 904.178	DPW TAG SE COR CONC FIRE HYD FTR, 21' N/O SIERRA HWY & 180' E/O CASLAM AVE 1585' E/O CROWN VALLEY RD	L 7202
PALMDALE (2010)	3,233.299 985.513	LA CO BM DISC MRK'D 7203, W'LY COR SE COR FIRR HYD @ SIERRA HWY & MTN SPRINGS RD	L 7203
PALMDALE (2010)	2,766.449 843.216	LA CO BM DISC MRK'D 7204, 14' W/O BCR, SE COR PEARBLOSSOM HWY & 47TH ST E.	L 7204
PALMDALE (2010)	2,790.734 850.618	LA CO BM TAG N/EDGE CONC BASE OF ST LITE @ SE COR PEARBLOSSOM HWY & 40TH ST E.	L 7205
PALMDALE (2010)	2,787.978 849.778	DPW BM TAG N/CURB 1' W/O BCR NW COR PEARBLOSSOM HWY & 40TH ST E.	L 7206
PALMDALE (2010)	2,754.760 839.653	LA CO BM TAG W/SIDE OF HDWL @ SW COR PEARBLOSSOM HWY & 52ND ST E.	L 7207

QUAD YEAR	ELEV FOOT/METER	DESCRIPTION	BM NUMBER
PALMDALE (2010)	2,762.168 841.911	LA CO DISC MRK'D 7208, W'LY COR HDWL, 70' SW CL PROD 50TH ST E. & 45 S/O PEARBLOSSOM HWY	L 7208
PALMDALE (2010)	2,819.771 859.469	LA CO BM DISC MRK'D 7209, TOP CTR CONC PIPE OUTLET, 22' S'LY OF EP PEARBLOSSOM HWY, 0.2MI E'LY 62ND ST E., 90' E/O PP 4685817E	L 7209
PALMDALE (2010)	2,800.138 853.485	LA CO BM DISC MRK'D 7210, TOP CTR CONC PIPE OUTLET, 22' S'LY OF EP PEARBLOSSOM HWY, 225' E'LY AVE T-8	L 7210
PALMDALE (2010)	2,779.952 847.332	LA CO BM TAG IN 1.5" IP, UP 10", 44' S/O CL PEARBLOSSOM HWY, 30' E/O NE COR BLDG 5828E, 7' S/O PP 907743E	L 7211
PALMDALE (2010)	2,913.952 888.175	LA CO BM TAG ON CONC SLAB, SE COR PEARBLOSSOM HWY & 77TH ST E., NW COR BLDG 7704	L 7212
PALMDALE (2010)	2,911.432 887.407	LA CO BM DISC MRK'D 7213, S'LY CURB PEARBLOSSOM HWY (OPP P.O. BLDG 7765)	L 7213
PALMDALE (2010)	3,289.586 1,002.669	BR CAP MON IN WELL, NE COR 106TH ST E & BUTTERFIELD STAGE RD, 62' E/O & 20' N/O CL INT, MP 1.5' S/O MON	L 7214
PALMDALE (2010)	3,058.426 932.211	LA CO BM DISC MRK'D 7216, 3' W/O CTR CONC HDWL, 25' S/O & 65' W/O CL INT FORT TEJON & MT EMMA RD	L 7216
PALMDALE (2010)	2,961.352 902.623	1" IP W/CAP MRK'D CALIF. DWR 1020 06-03, 60' N/O & 100' W/O CL INT FORT TEJON & AVE V, 13' N/O FIRE HYD	L 7217
BASELINE (2010)	2,961.335 902.618	LA CO BM DISC MRK'D 7218, TOP CTR 48" RCP OUTLET DRN, 31' S/O S'LY EP PEARBLOSSOM HWY & 0.25MI W/O 106TH ST E.	L 7218
BASELINE (2010)	2,957.612 901.483	LA CO BM DISC MRK'D 7219, TOP CTR 48" RCP OUTLET DRN, 31' S/O S'LY EP PEARBLOSSOM HWY & 0.55MI W/O 106TH ST E.	L 7219
BASELINE (2010)	2,948.613 898.740	1" IRON ROD MRK'D M4-412 DN 3", 63' N'LY OF EP PEARBLOSSOM HWY & 0.10MI E/O 96TH ST E., 1.5' E/O SW'LY COR CLF	L 7220
BASELINE (2010)	2,954.371 900.495	3" BR DISC MRK'D DWR CALIF. 357.6 A1 1998, S/SIDE PEARBLOSSOM HWY SW COR BRIDGE OVER AQUEDUCT & 0.1MI W/O 96TH ST E., TOP CONC GUARD RAIL	L 7221
BASELINE (2010)	2,933.700 894.194	2" IP W/LA CO BM DISC MRK'D 7222, 68' N'LY OF EP PEARBLOSSOM HWY & 0.4MI W/O 96TH ST E., 85' N/O PP 1294918E	L 7222
BASELINE (2010)	2,923.708 891.149	LA CO BM DISC MRK'D 7223, S/SIDE CTR CONC VAULT, 85' N/O & 265' W/O PEARBLOSSOM HWY & 89TH ST E.	L 7223
BASELINE (2010)	2,670.022 813.825	LA CO BM DISC MRK'D 7224, SE COR CONC PAD ELECT PANEL #37921, 30' W/O CL 90TH ST E. S/O AVE R, 10' S/O PP 4766952E	L 7224
PALMDALE (2010)	2,657.065 809.876	L&T W/CURB 90TH ST E. 45' S/O AVE Q-12, S'LY END CONC DRWY	L 7225
BASELINE (2010)	2,800.765 853.676	DPW TAG, 25' S/O & 25' W/O CL INT 87TH ST E. & AVE T-4, NW COR CONC DRWY HSE 36155	L 7226
BASELINE (2010)	2,827.541 861.837	L&T SE COR 87TH ST E. & AVE T-10, SW COR FIRE HYD SLAB	L 7227

QUAD YEAR	ELEV FOOT/METER	DESCRIPTION	BM NUMBER
BASELINE (2010)	2,864.714 873.167	L&T W/CURB, SW COR 87TH ST E. & AVE U	L 7228
BASELINE (2010)	2,780.906 847.623	L&T SE COR 87TH ST E. & AVE T S/CURB, 1' W/O BCR	L 7229
BASELINE (2010)	2,752.771 839.047	L&BRAD E/SIDE 87TH ST E. HSE 36650, S'LY DRWY (3' NW OF MAILBOX)	L 7230
BASELINE (2010)	2,729.504 831.955	2" IP W/LA CO BM DISC MRK'D 7231, 65' W/O & 250' S/O CL 90TH ST E. & KANOW AVE (3' W/O FIRE HYD)	L 7231
BASELINE (2010)	2,649.272 807.501	L&T E/CURB 90TH ST E. @ N'LY SIDE DRWY HSE 38322	L 7232
BASELINE (2010)	2,715.951 827.824	LA CO BM DISC MRK'D 7233, 30' N/O & 85' E/O 90TH ST E. & AVE S (SW COR FIRE HYD PAD)	L 7233
BASELINE (2010)	2,625.207 800.166	LA CO BM DISC MRK'D 7234, TOP OF 3' DIA CONC BASE, 65' E/O & 0.25MI N/O CL 90TH ST E. & AVE Q, OPP PP 4011765	L 7234
BASELINE (2010)	2,615.564 797.226	2" IP W/ LA CO ENG'R TAG, CL AVE P-8 & 45' W/O 90TH ST E. (E/EDGE)	L 7235
PALMDALE (2010)	2,605.077 794.030	LA CO BM DISC MRK'D 7236, 32' S/O CL INT 90TH ST E. & AVE P, S'LY GATE POST FTG, 15' NW'LY PP 373174E	L 7236
BASELINE (2010)	2,592.077 790.067	BM NAIL, 55' E/O & 275' N/O CL 90TH ST E. & AVE O-8, SE COR VALVE FTG, 80' E/O PP 373161E	L 7237
BASELINE (2010)	2,578.209 785.840	LA CO BM DISC MRK'D 7238, 57' NE/O CL INT 90TH ST E. & AVE O, FNC COR FTG	L 7238
BASELINE (2010)	2,567.120 782.461	2" IP W/CO ENG'R TAG UP 6", 70' SE/O CL INT 90TH ST E. & AVE N-8, 60' S/O PP 4205073E, MP 1' S'LY	L 7239
BASELINE (2010)	2,563.529 781.366	CE MON MRK'D RE 5869, BM 107-15-1961, 0.25MI S/O & 60' E/O CL INT AVE N & 90TH ST E., MP 3' S'LY	L 7240
BASELINE (2010)	2,556.417 779.198	2"IP & CE TAG, 100' SW'LY/O CL INT 90TH ST E & AVE N (MP 1.5' SW)	L 7241
PALMDALE (2010)	2,626.641 800.603	CAL-TRANS TAG IN S/CURB OF TRAFFIC CIRCLE ISLAND, CL INT PALMDALE BL & 47TH ST E.	L 7242
PALMDALE (2010)	2,624.540 799.962	CAL-TRANS TAG IN N/CURB OF TRAFFIC CIRCLE ISLAND, CL INT PALMDALE BL & 47TH ST E.	L 7243
PALMDALE (2010)	2,617.553 797.833	2" IP W/LA CO BM DISC MRK'D 7244, NW COR PALMDALE BL & 47TH ST E., 2' N/O PP 4685617E	L 7244
PALMDALE (2010)	2,600.247 792.558	1" IP W/ DPW TAG DN 10", NE COR 50TH ST E. & AVE Q, 50' N/O & 65' E/O CL INT	L 7245
PALMDALE (2010)	2,590.807 789.680	1" IP W/DPW TAG DN 12", SW COR 50TH ST E. & P-12	L 7246
PALMDALE (2010)	2,582.468 787.139	DPW BM TAG N'LY SIDE CONC COLLAR OF MH, 215' E/O CL 50TH ST E. & P-8	L 7247

QUAD YEAR	ELEV FOOT/METER	DESCRIPTION	BM NUMBER
PALMDALE (2010)	2,565.358 781.923	2" IP W/LA CO BM DISC MRK'D 7248, SW COR 50TH ST E. & AVE P	L 7248
PALMDALE (2010)	2,545.967 776.013	LA CO BM DISC MRK'D 7249, TOP OF CONC FNC POST FTG, NW COR 50TH ST E. & AVE P-8	L 7249
PALMDALE (2010)	2,532.088 771.783	L&T, NW COR 50TH ST E. & AVE O, N/GATE CONC FNC POST FTG	L 7250
BASELINE (2010)	2,481.638 756.406	DPW BM TAG, SW COR AVE M & 50TH ST E., TOP CONC FNC POST FTG @ B.C. OF CLF	L 7251
PALMDALE (2010)	2,587.453 788.658	LA CO BM TAG, 42' N/O & 785' W/O CL INT AVE P & 15TH ST E., 3' E/O WEST END CB ON N'LY CURB	L 7252
PALMDALE (2010)	2,722.449 829.805	LA CO BM DISC MRK'D 7253, NW COR DIVISION ST & RAYBURN RD, @ BCR	L 7253
PALMDALE (2010)	2,885.233 879.422	L&BRAD, SE COR AVE S & TIERRA SUBIDA AVE, 15' W/O BCR S'LY CURB	L 7254
PALMDALE (2010)	2,811.775 857.032	L & BRAD, SE COR TIERRA SUBIDA AVE & RAYBURN RD, 1' S/O BCR E'LY CURB	L 7255
PALMDALE (2010)	2,870.915 875.058	DPW BM TAG IN S CB 1' E/O BCR @ SE COR AVE S & GEIGER AVE	L 7256
PALMDALE (2010)	2,588.098 788.855	LA CO BM DISC MRK'D 7257, NW COR AVE N & 30TH ST W., SW COR ELECT BOX CONC SLAB	L 7257
PALMDALE (2010)	2,733.623 833.211	LA CO BM TAG, 7' E/O BCR, SE COR ELIZABETH LAKE RD & JUNIPER TREE RD	L 7258
PALMDALE (2010)	2,780.419 847.474	USGS 4" BR DISC, 7' E/O BCR, SE COR CATTLE X-ING RD NEAR ENT TO FIRE ACCESS RD GATE, 50' S/O ELIZABETH LAKE RD & 0.25MI W/O 25TH ST W. (MRK'D X 1221-1971)	L 7259
PALMDALE (2010)	2,845.942 867.446	LA CO BM TAG MRK'D 7260, SW COR ELIZABETH LAKE RD & RANCH CTR DR (NEW RD), N/END OF C.B.	L 7260
PALMDALE (2010)	2,964.871 903.695	CALIF DWR MON MRK'D 337.7A RESET '06, NW COR BRIDGE (#B1625) GOODE HILL RD OVER CALIF AQUEDUCT	L 7261
PALMDALE (2010)	2,937.012 895.204	LA CO SURVEY MON MRK'D 12, 85' S/O & 330' W/O CL INT ELIZABETH LAKE RD & VINEYARD LANE	L 7262
PALMDALE (2010)	3,386.545 1,032.222	2" IP W/LA CO BM DISC MRK'D 7263, 33' S/O GOODE HILL RD & 0.1MI N/O E'LY GATE TO HSE 6502, 8' S/O E'LY END GUARD RAIL	L 7263
PALMDALE (2010)	3,401.944 1,036.916	LA CO BM DISC MRK'D 7264, CTR CONC HDWL, 6' S'LY OF S'LY CM 13.91 ELIZABETH LAKE RD	L 7264
BASELINE (2010)	2,647.073 806.830	LA CO ENG'R MON, CL INT AVE L & 90TH ST W., MRK'D SEC COR 29, 30, 31, 32 R13W, T7N)	L 7265
BASELINE (2010)	2,643.613 805.776	LA CO BM DISC MRK'D 7266, 80' E/O & 30' S/O CL INT AVE L & 90TH ST W. , N'LY FTG METAL PP (DN 16")	L 7266

QUAD YEAR	ELEV FOOT/METER	DESCRIPTION	BM NUMBER
BASELINE (2010)	2,534.980 772.664	DPW TAG, 9' E/O BCR, NW COR AVE M & 4TH ST W.	L 7267
BASELINE (2010)	2,520.500 768.251	DPW TAG, NW COR AVE M & 30TH ST W., SE COR CONC SLAB ELECT PANEL	L 7268
BASELINE (2010)	2,525.791 769.863	LS TAG 5000, SW COR AVE M & QUARTZ HILL RD, S/CURB @ W'LY END DRWY	L 7269
BASELINE (2010)	2,504.565 763.394	LA CO BM DISC MRK'D 7270, NW COR AVE M & 40TH ST W., 2' E/O CTR CONC PAD FIRE HYD	L 7270
BASELINE (2010)	2,846.148 867.509	USGS MON MRK'D W-1044-1960, 150' E/O CL INT AVE L & 105TH ST W.	L 7271
BASELINE (2010)	2,826.721 861.587	CS MON (25,36,1/4 COR. T7N SEC) CL INT AVE L & 105TH ST W.	L 7272
PALMDALE (2010)	2,762.591 842.040	2" IP W/ LA CO ENG'R TAG, SE COR CL INT AVE L-8 & 90TH ST W.	L 7273
BASELINE (2010)	2,875.000 876.303	2" IP W/ LA CO ENG'R TAG, SW COR AVE M & 85TH ST W. UP 6"	L 7275
BASELINE (2010)	2,721.736 829.588	CS MON CL INT AVE M & 80TH ST W. FLUSH	L 7276
PALMDALE (2010)	2,957.505 901.450	4" BR DISC MRK'D DWR STATE OF CA, BC OF N'LY TOP OF WALL CA AQUEDUCT, 140' W/O NE'LY COR BRIDGE 334.01 PVT (AVE M & 90TH ST W.)	L 7277
BASELINE (2010)	2,495.806 760.724	DPW TAG W'LY CURB , 12' N/O BCR, SW COR AVE M & 50TH ST W.	L 7278
PALMDALE (2010)	2,690.118 819.950	CAL DIV HWYS MON, 65' S/O & 0.25MI W/O CL INT 90TH ST W. & AVE L (MRK'D SUR J-11, RM2, 1972), MP 2' S/O MON	L 7279
PALMDALE (2010)	3,081.486 939.240	2"IP W/CS BR CAP MON, UP 3", 240' S'LY OF AVE S, 0.3MI SE'LY OF CL INT THE GROVE & AVE S, CL PROD OF AVE S (FROM THE EAST), MON 1' NE'LY OF MKR POST, MRK'D SC - 32,33,5	L 8000
PALMDALE (2010)	3,074.902 937.233	LA CO BM DISK, STMP'D 8001, 1' N/O N'LY CURB AVE S & 0.25MI SE'LY OF THE GROVE (ST) @BASE OF LIGHT POLE #4579152E, 140' NW'LY OF END OF CONC CURB	L 8001
PALMDALE (2010)	3,053.546 930.724	LA CO BM DISK, STMP'D 8002, NE'LY COR AVE S & THE GROVES, 4' N/O N'LY CURB, 17' SE'LY OF BCR, NW COR OF CATCH BASIN	L 8002
PALMDALE (2010)	3,053.467 930.700	LA CO BM DISK, STMP'D 8003, SE'LY COR AVE S & THE GROVES, 4' S/O S'LY CURB, 5' SE'LY OF BCR, SW COR OF CATCH BASIN	L 8003
PALMDALE (2010)	3,024.779 921.955	LA CO BM DISK, STMP'D 8004, 4' N/O N'LY CURB AVE S, 62' SE'LY OF CL PROD MIMOSA WY, NW COR OF CATCH BASIN	L 8004
PALMDALE (2010)	3,014.862 918.933	LA CO BM DISK, STMP'D 8005, NE'LY COR AVE S & PARKWOOD DR, 4' N/O N'LY CURB, 5' SE'LY OF BCR, NW COR OF CATCH BASIN	L 8005
PALMDALE (2010)	3,015.072 918.997	LA CO BM DISK, STMP'D 8006, SE'LY COR AVE S & PARKWOOD DR, 4' S/O S'LY CURB, 5' SE'LY OF BCR, SW COR OF CATCH BASIN	L 8006

QUAD YEAR	ELEV FOOT/METER	DESCRIPTION	BM NUMBER
PALMDALE (2010)	2,960.057 902.228	SPK IN CONC BRIDGE CURB, MOST NW'LY COR OF CITY RANCH RD BRIDGE OVER CA AQUEDUCT	L 8007
PALMDALE (2010)	2,959.686 902.115	4" DEPT WATER RESOURCES BR DISK IN N'LY CONC BRIDGE CURB, NE'LY COR OF CITY RANCH RD BRIDGE OVER CA AQUEDUCT, STMP'D 3426A, 1971	L 8008
PALMDALE (2010)	2,980.215 908.372	CE MON IN WELL, DN 16", CL INT AVE S & TOVEY AVE, 0.45MI W/O TIERRA SUBIDA	L 8009
PALMDALE (2010)	2,958.584 901.779	DWR MON MRK'D 34512A-1971, N'LY BACK OF WALK AVE S, E.END OF BRIDGE OVER CALIF AQUEDUCT, 500' E/O FELICITAS AVE	L 8010