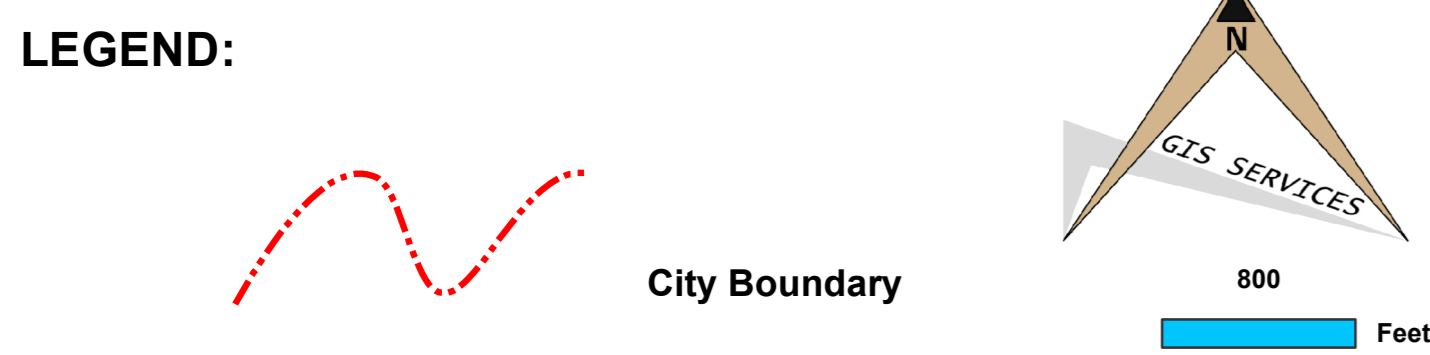
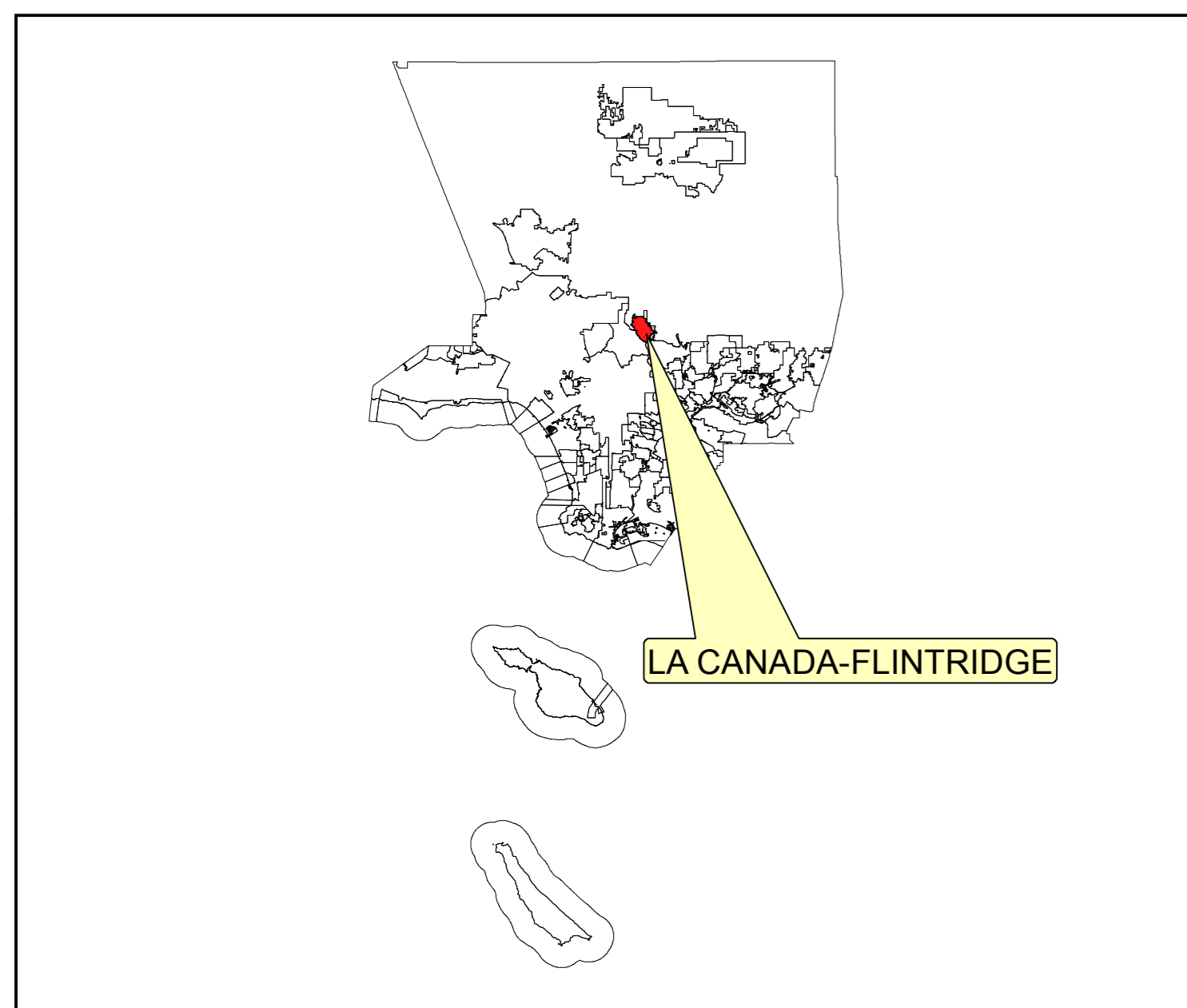
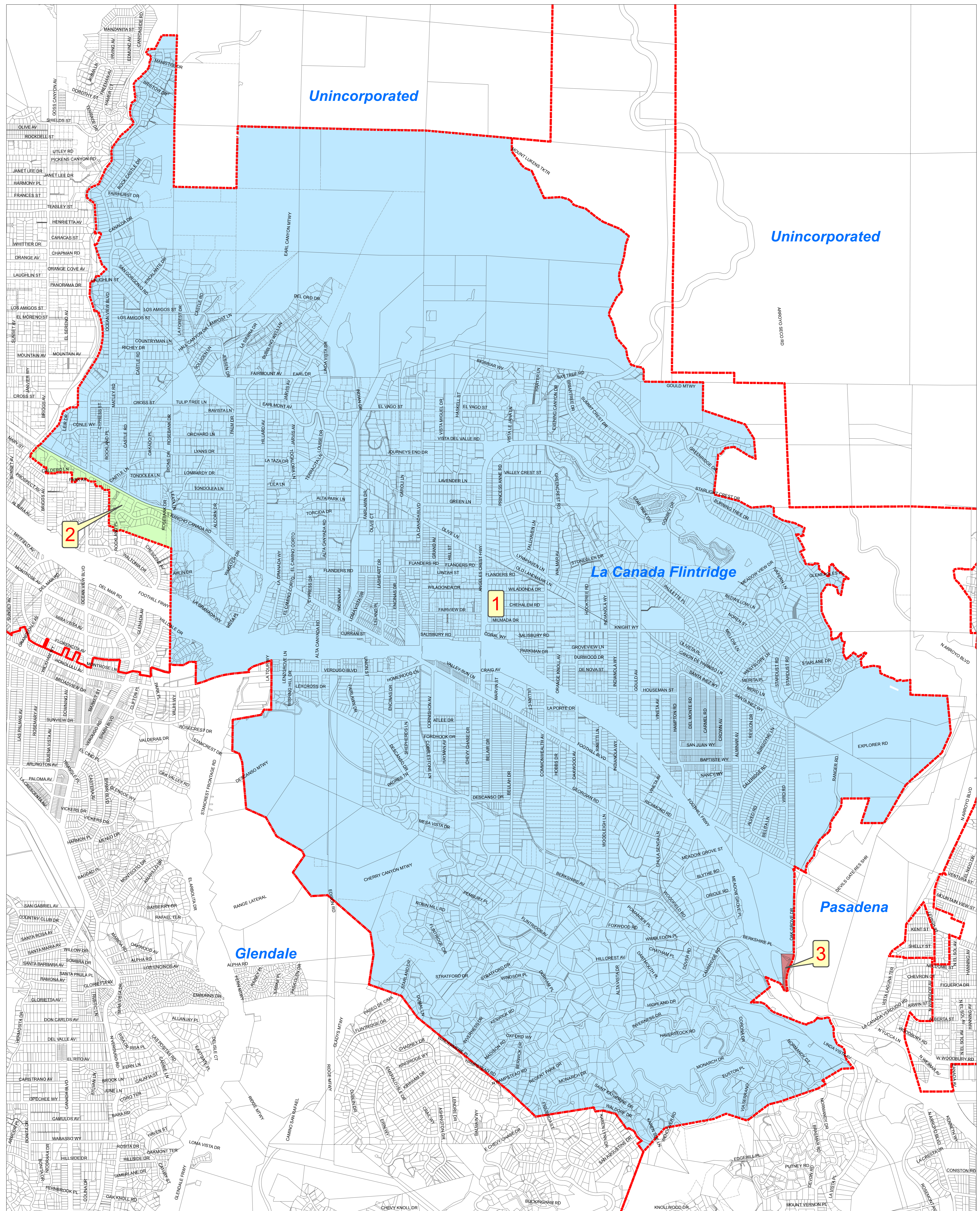



City of La Canada-Flintridge Annexations

NO.	TYPE	NAME	SEC. OF STATE	EFFECTIVE-DATE	ANNEX-AREA	TOTAL-AREA
1	A	INCORPORATION	11/30/1976	12/8/1976	8.552 sq. mi.	8.552 sq. mi.
2	A	ANNEX. NO. 1	5/16/1978	5/16/1978	0.054	8.606
3	A	ANNEX. NO. 2	9/15/1995		0.004	8.610




DEPARTMENT OF PUBLIC WORKS
 900 S. Fremont Ave.
 Alhambra, CA 91803
 Survey/Mapping & Property Management Division
 GIS Services

LOS ANGELES COUNTY EXPRESSLY DISCLAIMS ANY LIABILITY FOR INACCURACIES WHICH MAY BE PRESENT IN THIS MAP. Data contained in this map is produced in whole or part from the Los Angeles County Department of Public Works' digital database.