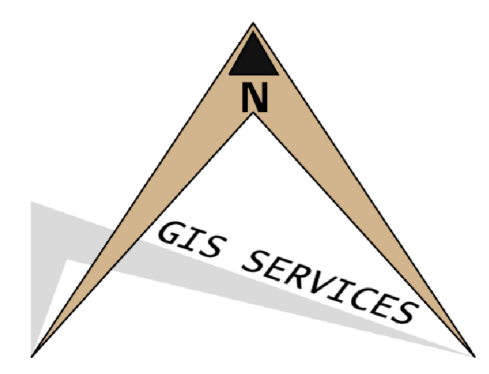
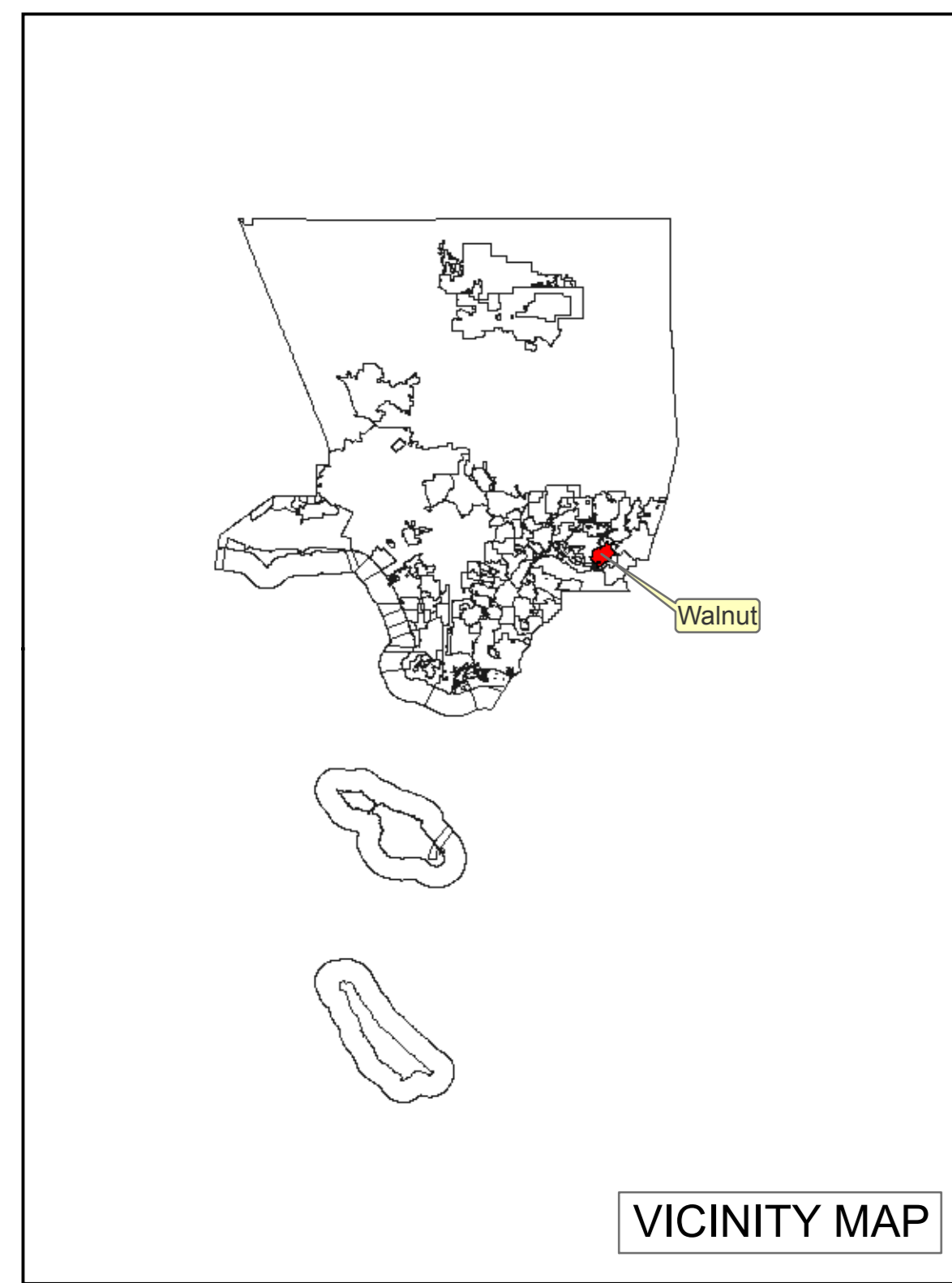
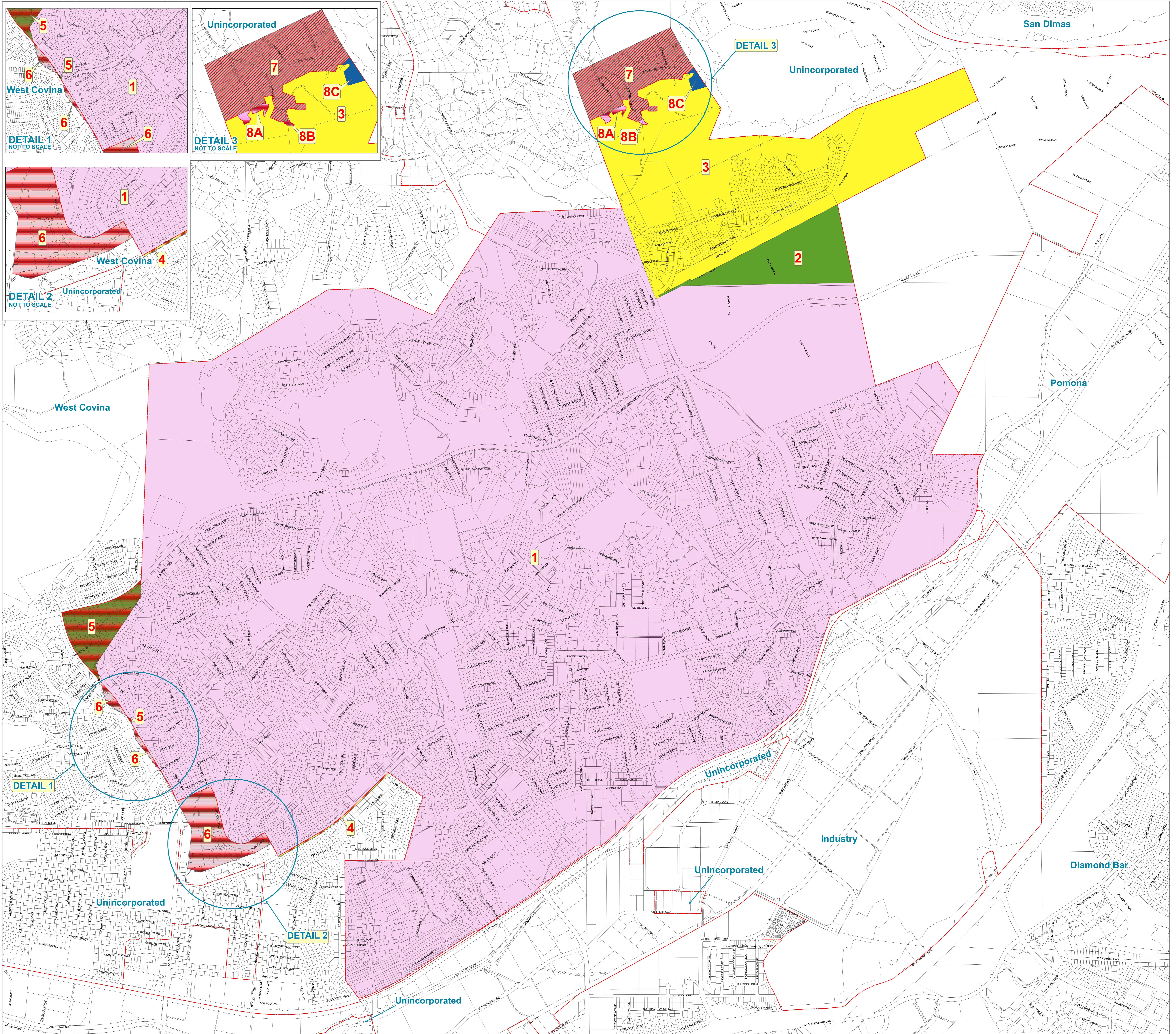


City of Walnut Annexations

No.	Type	Annexation Name	Effective Date	Annexed Area (sq.mi.)	Total Area (sq.mi.)
1	A	ORIG. INCORPORATION	01/19/1959	7.737	7.737
2	A	MT. SAN ANTONIO ANNEX. NO.1	08/12/1959	0.138	7.875
3	A	COVINA RANCH ANNEX. NO.2	09/27/1964	0.869	8.744
4	D	BDY.RELOC.1968-1(DET.)	09/24/1968	-0.004	8.740
5	A	ANNEXATION NO. 2	02/15/1973	0.061	8.801
5	A	ANNEXATION NO. 2	02/15/1973	0.000	8.801
6	D	SLY. ANNEX. NO. 218	02/15/1973	-0.075	8.726
6	D	SLY. ANNEX. NO. 218	02/15/1973	-0.115	8.611
7	D	DETACHMENT 1-86	11/14/1986	0.004	8.615
8-C	A	REORG.NO.97-1(PAR. C)	03/28/2000	0.004	8.615
8-B	D	REORG.NO.97-1(PAR. B)	03/28/2000	-0.001	8.614
8-A	D	REORG.NO.97-1(PAR. A)	03/28/2000	-0.003	8.611



600 FEET

LEGEND:

City Boundary

DEPARTMENT OF PUBLIC WORKS
 900 S. Fremont Ave.
 Alhambra, CA 91803
 Survey/Mapping & Property Management Division
 GIS Services

LOS ANGELES COUNTY EXPRESSLY DISCLAIMS ANY LIABILITY FOR INACCURACIES WHICH MAY BE PRESENT IN THIS MAP. Data contained in this map is produced in whole or part from the Los Angeles County Department of Public Works' digital database. FILENAME: REF: 10pwyellerSpecialDistricts_walnut_annexes.mxd Map: Walnut.mxd Mapped By: MMBurg FILE DATE: 10 February 2014 10:44:15