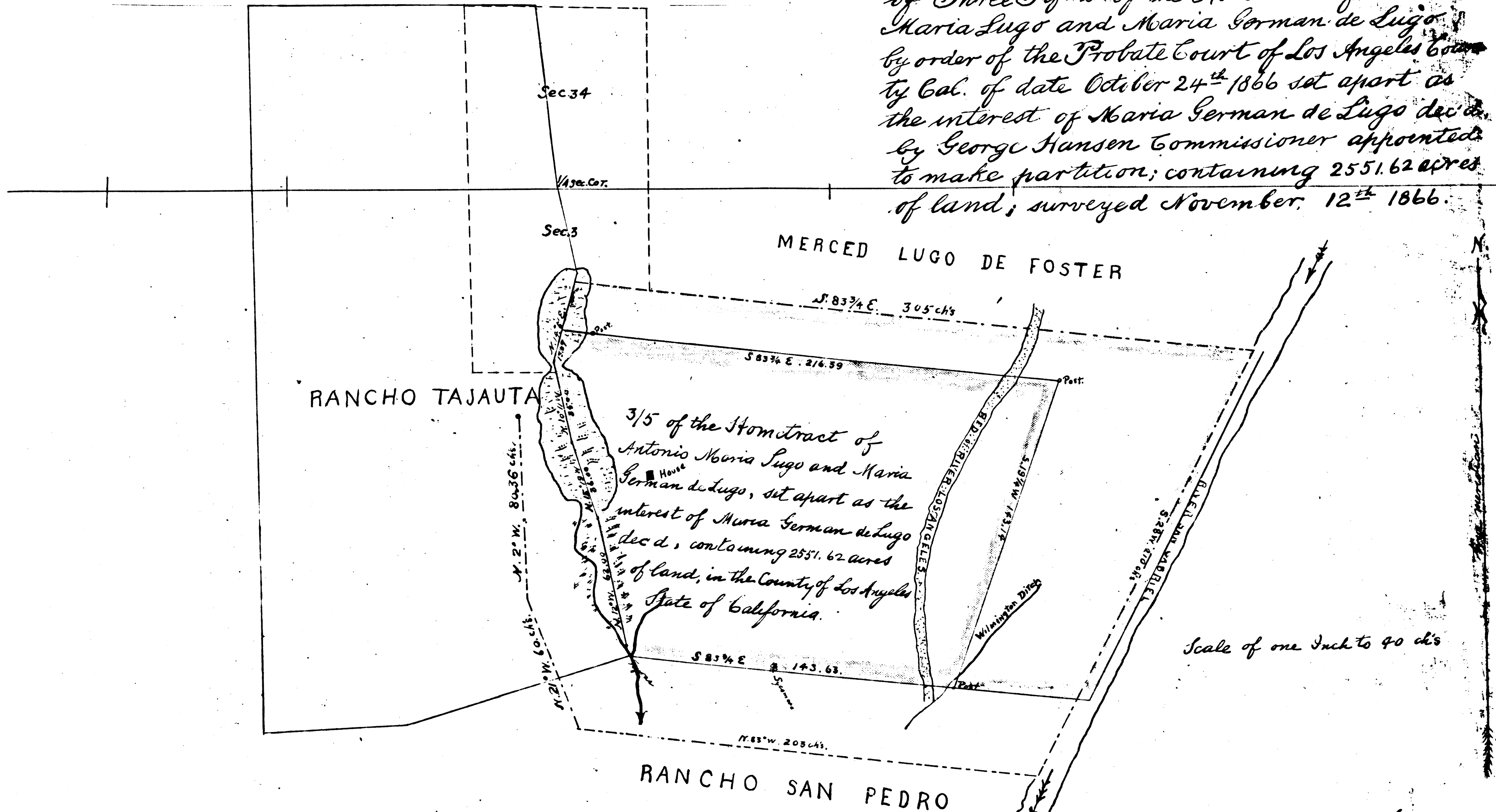


T. 2 S., R. 13 W

Plat
of Three Fifths of the Homestead of Antonio
Maria Lugo and Maria German de Lugo
by order of the Probate Court of Los Angeles County
Cal. of date October 24th 1866 set apart as
the interest of Maria German de Lugo dec'd.
by George Hansen Commissioner appointed
to make partition; containing 255.62 acres
of land; surveyed November, 12th 1866.



Scale of one Inch to 40 chs

In the Probate Court of Los Angeles County
State of California.
In the matter of the Estate of Maria
German Lugo dec'd.

I hereby certify this
to be the Plat referred to in my report
of Partition of this date.

Los Angeles November 17th 1866
George Hansen
Commissioner appointed to make
partition in the above case.

Probate Court
No. 266

