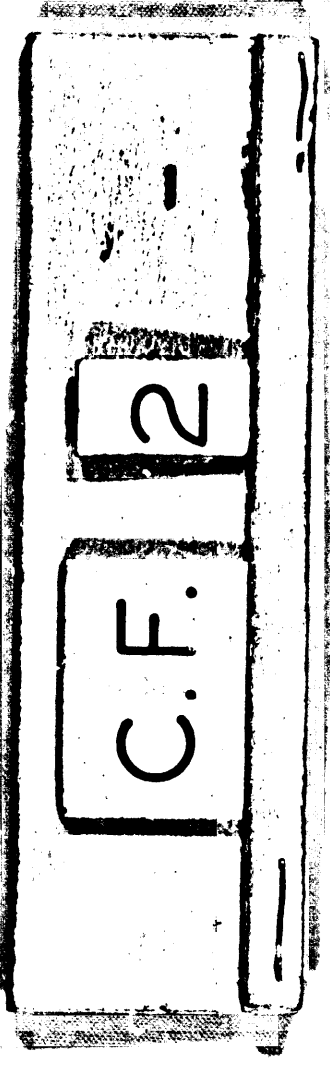
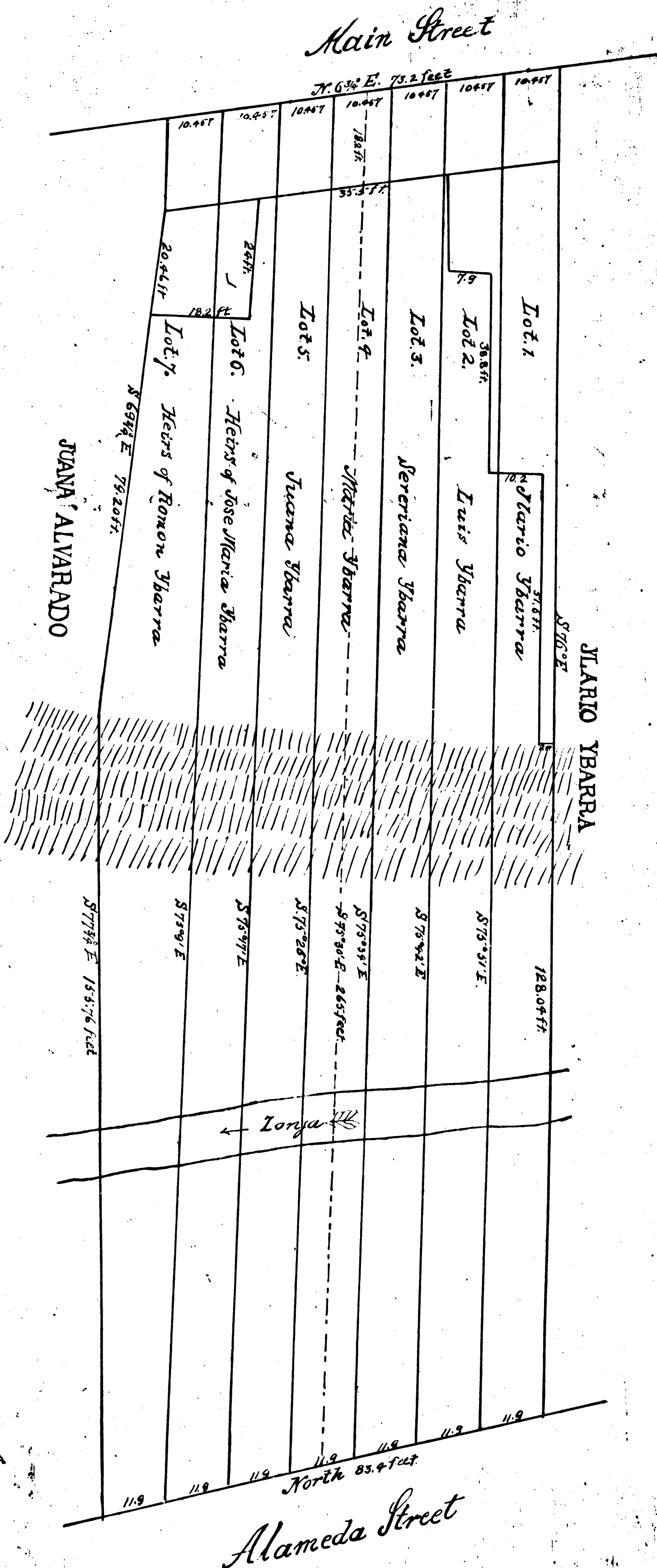


*Plan No. 285*  
of the House lot in the City and County of Los Angeles, State of California belonging to the Estate of Maria de Jesus Valenciana Toranzo deceased

showing  
the partition, made by George Hansen, Julian Charis and Christobal Aguilar, Commissioners of Partition appointed by decrees of the Probate Court of Los Angeles County State of California of dates February 25<sup>th</sup> and March 18<sup>th</sup> 1867.

Scale 20 feet to 1 inch. The Courses are magnetic.  
Surreyed March 25<sup>th</sup> 1867.



Probate Court  
No. 285.