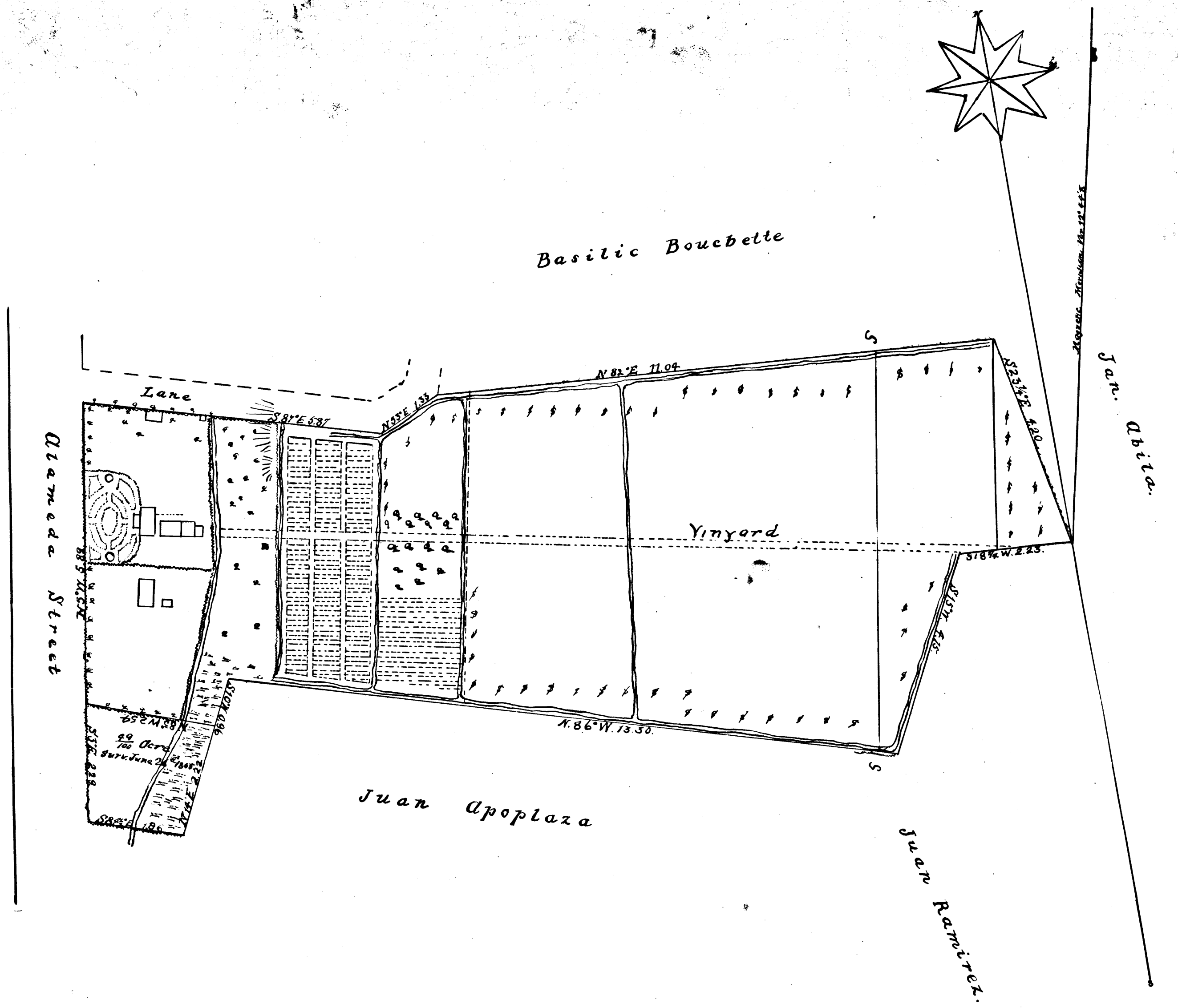


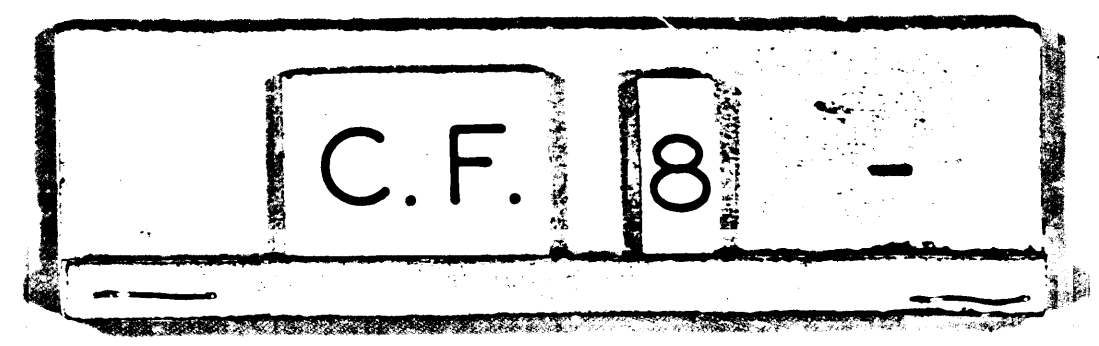
W 437  
D 2 Cont

MAP  
of the  
**VINEYARD**  
of  
Mr B. D. Wilson  
situate in Los Angeles City Cal.



Area of the whole tract  $11\frac{28}{100}$  acres +  $0.49 = 11\frac{97}{100}$  acres.  
Area of ground planted with vines  $7\frac{1}{2}$  acres  
Scale of 2 chains or 132 feet to the inch.  
The courses are magnetic  
Surveyed May 21<sup>st</sup> 1855 by G. Hansen.  
Dep. County Surveyor of Los Angeles County Cal.

I hereby certify the above to be a correct plot of the Garden of  
B. D. Wilson Esq. fronting on Diameda Street Los Angeles City.  
May the 23<sup>rd</sup> 1855 Geo. Hansen Dep. County Surveyor.  
of Los Angeles County.  
June 26<sup>th</sup> 1855.



District Court  
No. 437.