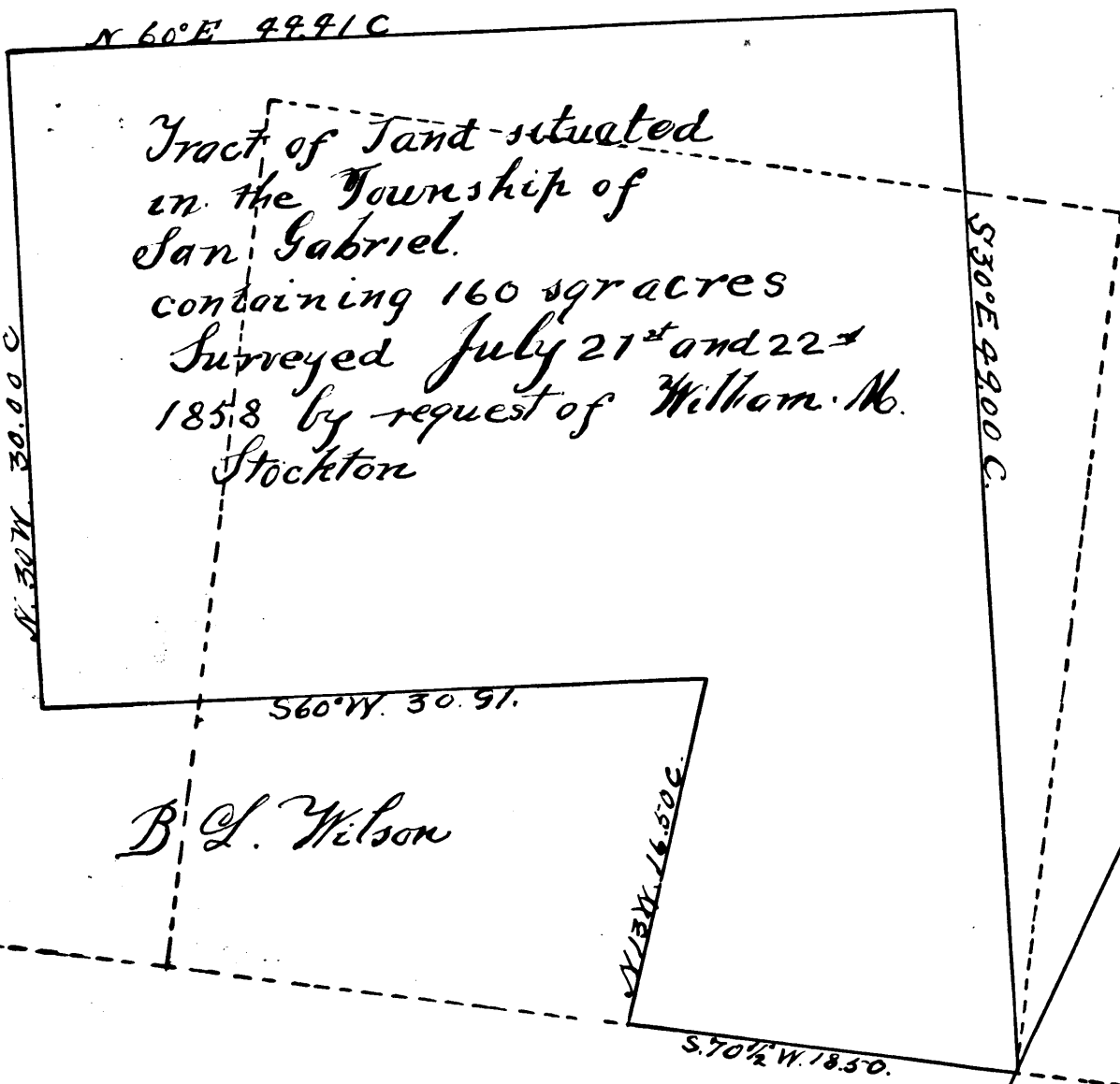


VEMCO  
PASADENA, CAL.

Rancho San Pasqual



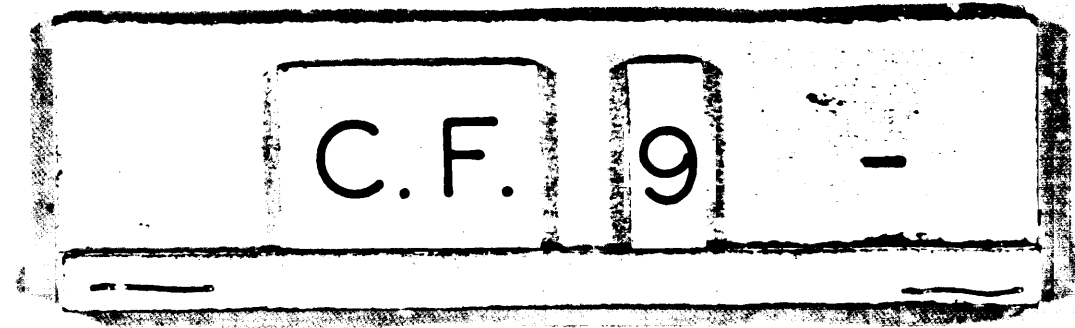
Tract of Land situated  
in the Township of  
San Gabriel  
containing 160 square acres  
Surveyed July 21<sup>st</sup> and 22<sup>nd</sup>  
1858 by request of Wilham M.  
Stockton

B. L. Wilson

Scale of 10 chains to the inch  
True Meridian Courses  
Var 13° 30' W

I hereby certify this to be a correct copy of a plat of  
survey made by me July 21<sup>st</sup> and 22<sup>nd</sup> 1858 by  
request of Wm. M. Stockton, the Moore County Surveyor  
of Los Angeles County.

District Court  
No. 547.



VEMCO  
PASADENA, CAL.

LS 6