

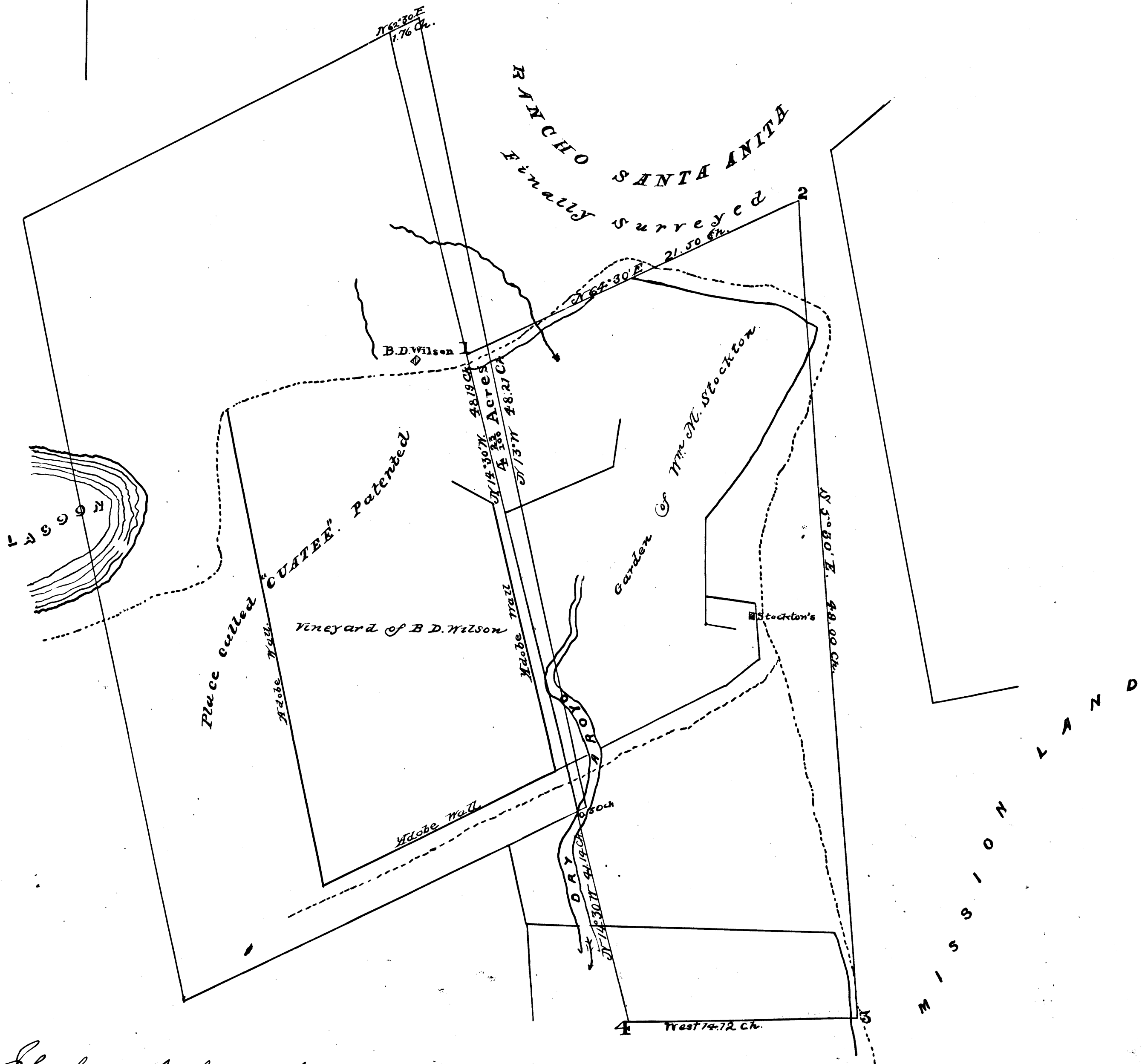
TRACT OF LAND

belonging to
W. M. STOCKTON.

Remarks. The tract ordered surveyed is designated by the blue border. The tract shown by the red border is inclosed within a tract called "Cuatee" patented by the U. S. and owned by B. D. Wilson.

Surveyed in conformity with an order of Hon. Benjamin Hays Judge of the First Judicial District, bearing date July 29th 1859. by

E. Hadley
County Surveyor



C.F. 110

I hereby certify that in obedience to an order of Hon. Benjamin Hays, Judge of 1st Judicial District, I have surveyed the Tract of Land represented in the above plat.
County Surveyor's Office, E. Hadley,
Los Angeles 18th Oct. 1859. County Surveyor

District Court
No 562