

Case No 698.  
Dist Court of  
California for Los Angeles

José Rubio Plaintiff

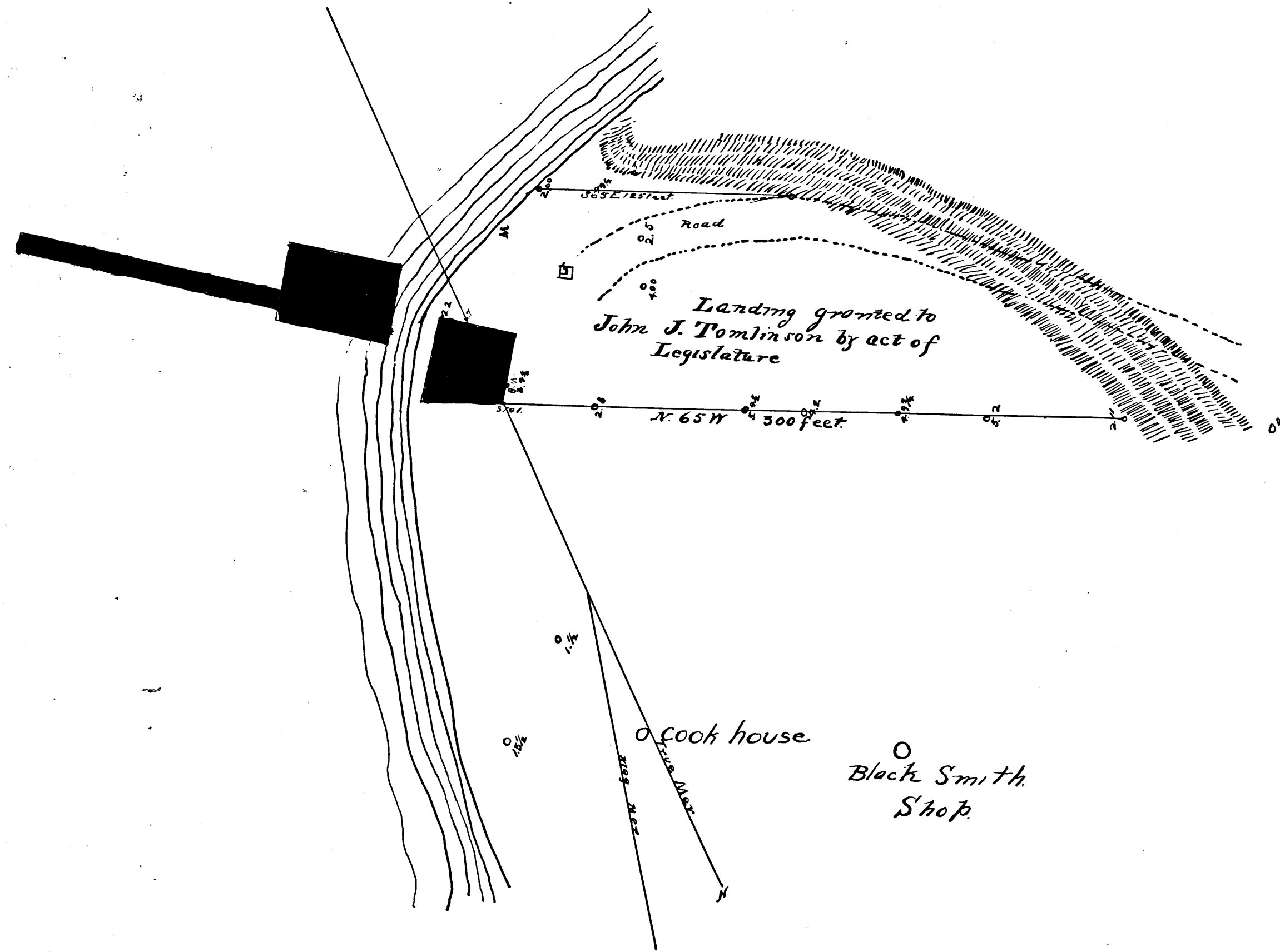
vs  
John J. Tomlinson  
Defendant

"L"  
G.W.G.

Filed December 13<sup>th</sup> 1860

John W. Shore Clerk

By George Giff Dep



District Court  
No. 698.

Scale of 50 feet to the inch  
True meridian courses  
Var 13° 30' E.

Timms.

