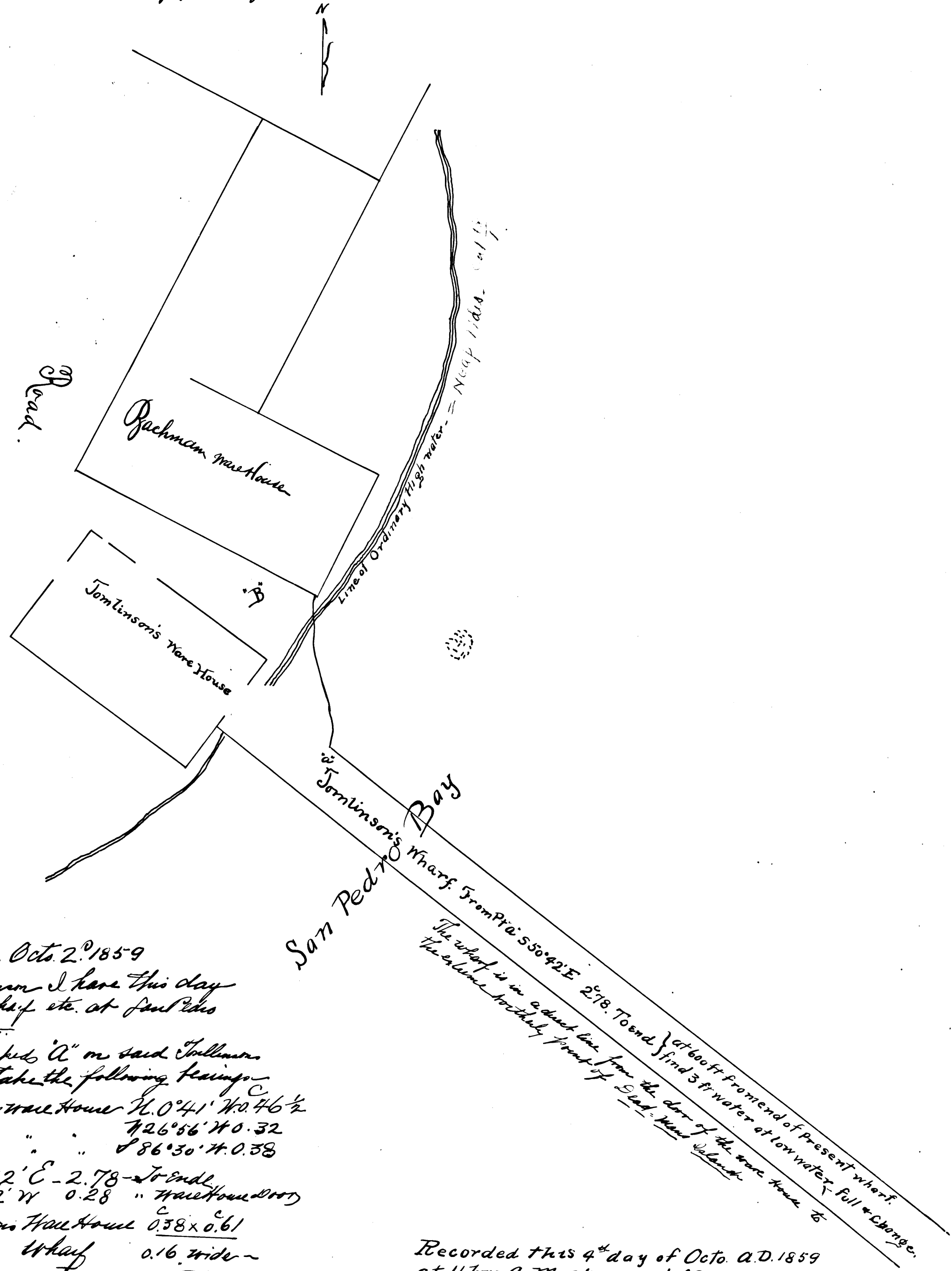


Read for Record from City of Los Angeles
 1859, at 11 hrs. A.M. at request of
 S. Reynolds Esq.
 John W. Shore Co. Rec.
 for the Shore Dept.

Plan of Wharf of J. J. Tomlinson as it now is
 at "The Point" San Pedro, Calif.

and which he intends to petition the Board of Supervisors
 of said County for the right to hold & extend -



Field Notes. Oct. 2, 1859

At request of Jno J Tomlinson I have this day
 made survey of a certain wharf etc. at said Point
 Los Angeles County California.

Commencing at a point marked "A" on said Tomlinson
 wharf and from thence take the following bearings -

To S.E. Corner of Bachman's Warehouse N. 0° 41' W. 0.46 1/2
 " N.E. " " Tomlinson " " 72° 56' W. 0.32
 " S.E. " " " " " 86° 30' W. 0.38

Course of Wharf S. 50° 42' E - 2.78 - To end
 " N. 50° 42' W 0.28 " Warehouse door

Dimensions of Tomlinson's Warehouse 0.58 x 0.61
 Wharf 0.16 wide -

From said Point "A" N 20° 45' W 0.50 to Point "B"
 From thence N 64° 57' W 0.62 To S.W. Corner of Bachman's
 Warehouse.
 N 69° 06' W 0.50 to N.W. Corner of Tomlinson's
 Warehouse.

C.F. 113

Recorded this 4th day of Octo. A.D. 1859
 at 11 hrs A. M. at request of S.E. Reynolds Esq.
 John W. Shore Co. Rec.
 for the Shore Dept.

District Court
 No. 698

The water at very high tides during gales inundates the ground
 upon which the Warehouse of J. J. Tomlinson is located.
 Wm. Moore Esq.
 By Geo. W. Giffy dep. Co. Surveyor

Certified to Dec. 4, 1860.
 J. W. Shore Co. Recorder
 by W. W. Stetson Deputy