

Map
of the
Rancho La Cienega

situate in the County of Los Angeles California containing 4439.05 acres of land according to a Survey made under instructions from the U. S. Surveyor General by Henry Hancock Deputy Surveyor in September 1858

showing
the Partition made by James F. Young, John G. Nichols and E.W. Squires Referees of partition, appointed by order of the District Court of date November the 9th 1866;
surveyed under the directions of said Referees by George Hansen County Surveyor Dec. 1866.

Table of Partition

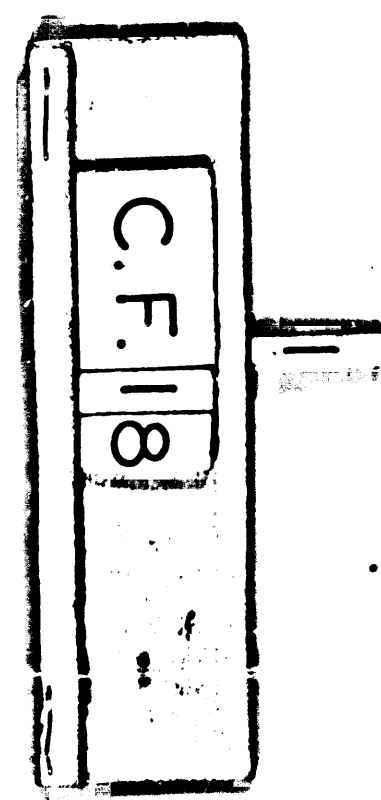
Names	Inter-est 160 th	Corn/land 1 st class acres	Vineyard & Grass 1 st class 2 nd class	Oil land acres	Alkali land acres	Total.
Henry H. Gird	32	194.40	660.60	24	36	915
F ^{co} Abila de Pimpuu	32	194.40	660.60	24	2	881
Januario Abila	32	194.40	660.60	24		879
Antonio Urquides	12	72.90	247.72	9	6	335.62
Thomas Gray	10	60.75	206.44	7.50		274.69
Matthew Lanfrance	8	48.60	165.15	6.		219.75
Elizabeth Dalton	8	48.60	165.15	6.		219.75
James Vandenburg	5	30.375	103.22	3.75		137.35
John G. Carpenter	5	30.375	103.22	3.75		137.34
W ^{co} Andres	4	24.30	82.575	3		109.875
James H. Whitworth	4	24.30	82.575	3		109.875
Mariano Chavis	4	24.30	82.575	3		109.875
Francisco Alvarez do	4	24.30	82.575	3		109.875
	160	972	3303.	120	44	4439.

T.1.S.R.14W
Sec.36
4th Sec.
10th
Sec.1.
T.2.S.R.14W.

In the District Court of the First Judicial District of California for Los Angeles County.
Henry H. Gird at al. } John G. Nichols
vs. }
Januario Abila et al. }

We the Referees appointed to make partition in the above Suit hereby certify this to be the map referred to in our report of partition of this date
Los Angeles December 10th 1866.
John G. Nichols
E. W. Squires.

District Court
No 1161



Retraced by Frank W. Doe, July 29, 1958
Old tracing Filed in L.A. County
Engineers Pacoima Vault.

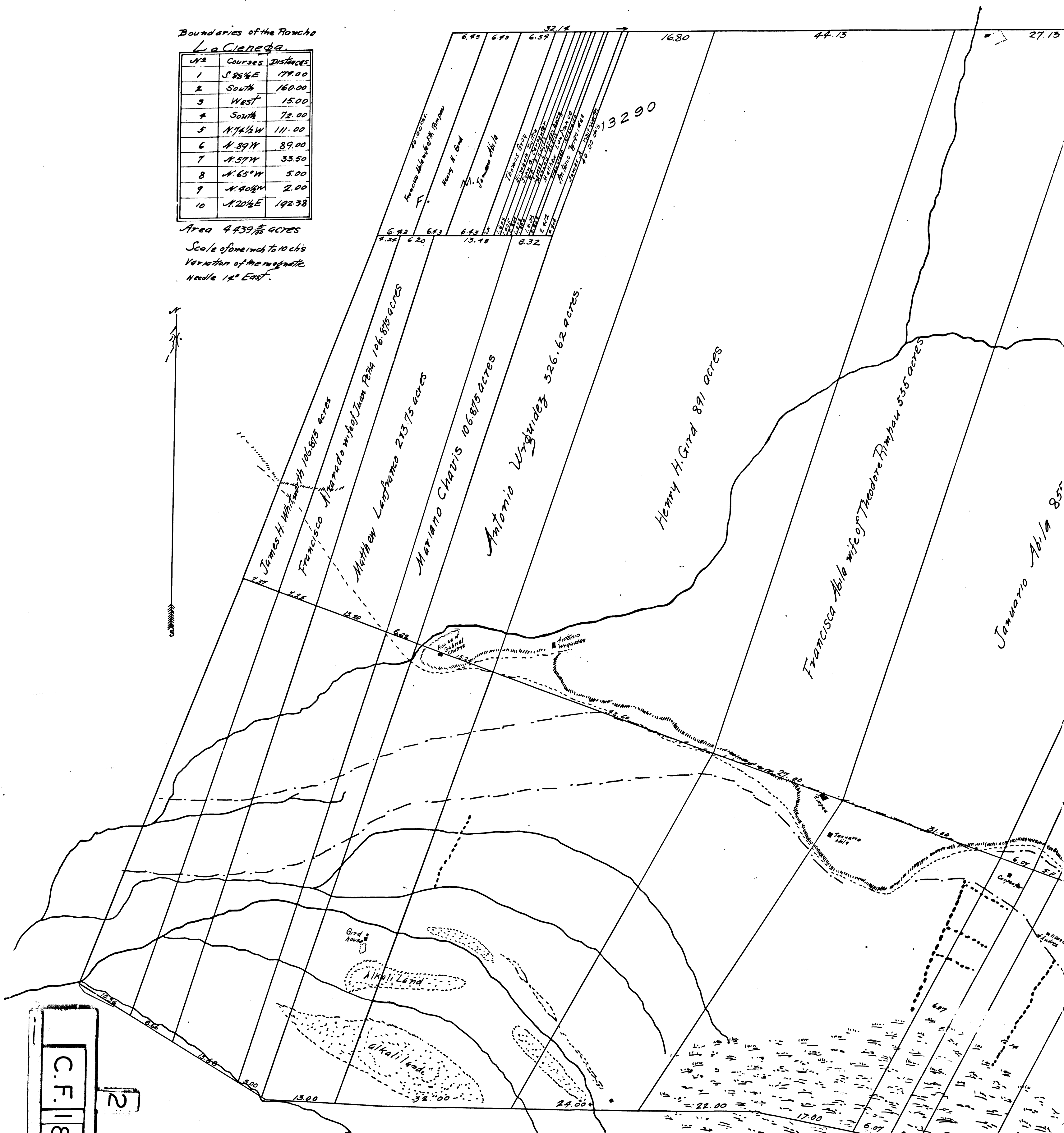
Boundaries of the Rancho

La Cienega

Course	Course	Distances
1	S. 85 1/2° E	179.00
2	South	160.00
3	West	15.00
4	South	72.00
5	N. 74 1/2° W	111.00
6	N. 89° W	89.00
7	N. 57° W	33.50
8	N. 65° W	5.00
9	N. 40° W	2.00
10	N. 20 1/2° E	192.38

Area 4439 2/3 acres

Scale of one inch to 10 chs
Variation of the magnetic
Needle 1 1/2° East.



C.F. 118
2

- Live fences
- ~~~~~ Streams of water
- Swamp
- Roads
- Vineyard land

The land between the dotted lines --- is second class or vineyard land and all the land south of A is Cornland and Alkali land and all the land north of the vineyard land is 3d class land and oil land.