

of a

the 9th of February 1867 on request of Ch^s V. Howard Esq by C. Hansen, County Surveyor.

the 9th of February 1867 on request of Ch^s V. Howard Esq by C. Hansen, County Surveyor.

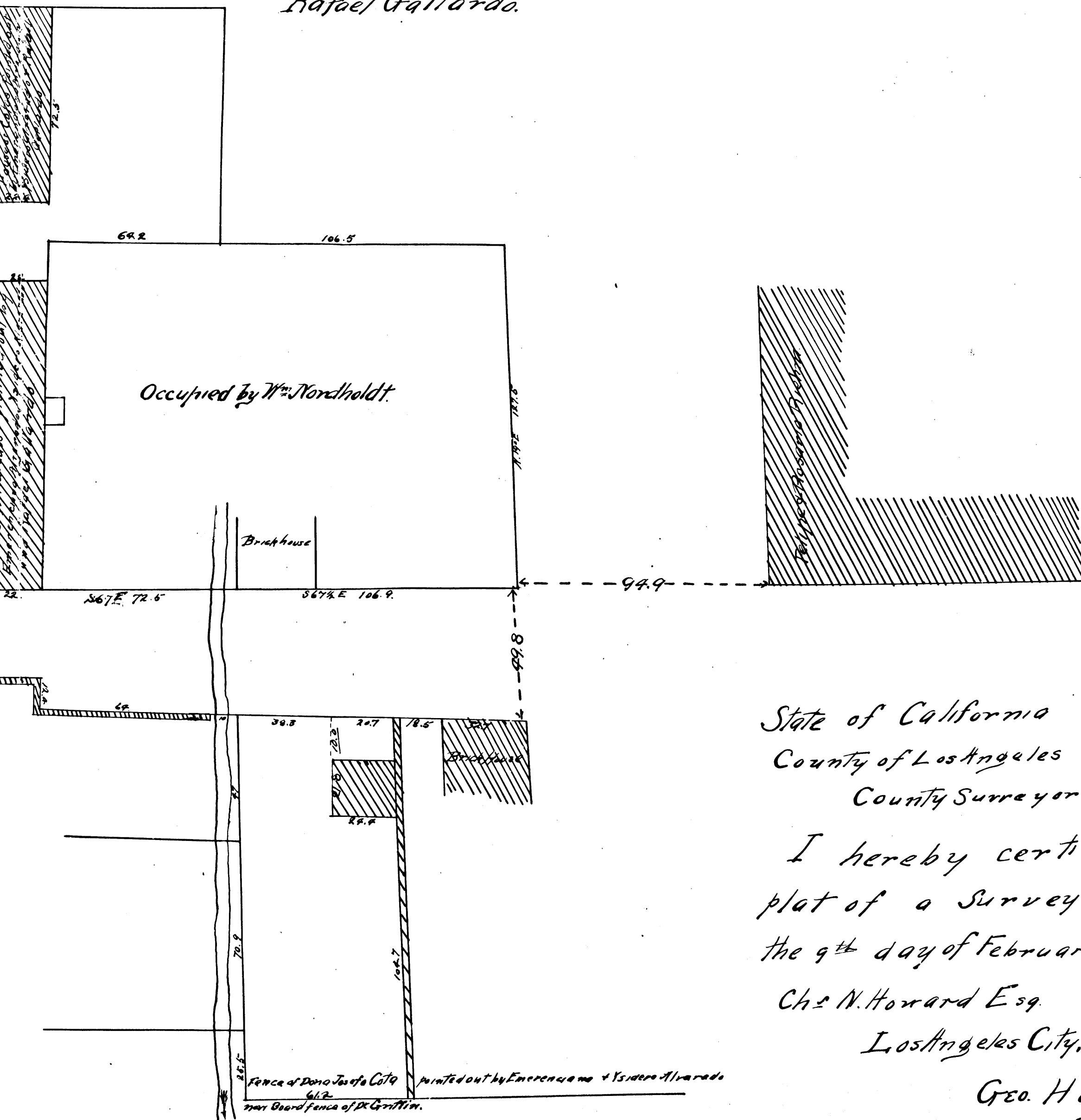
showing

distances of the houses of Alvarados and Cotas and the fence of the widow Josefa Cota described in the Ayuntamiento of Los Angeles in the matter of the Grant of a Lot of land of 36 Varas front and Mariano B. Poldan on the 26th of June 1847, as pointed out and sworn to by

Emerenciana Alvarado

Ysidoro Alvarado

Rafael Gallardo.



State of California

County of Los Angeles

County Surveys office

I hereby certify to be a correct
 plat of a Survey made by me on
 the 9th day of February 1867, on request of
 Ch^s N. Howard Esq.

Los Angeles City, February 13. 1867

Geo. Hansen.

County Surveyor.

District Court

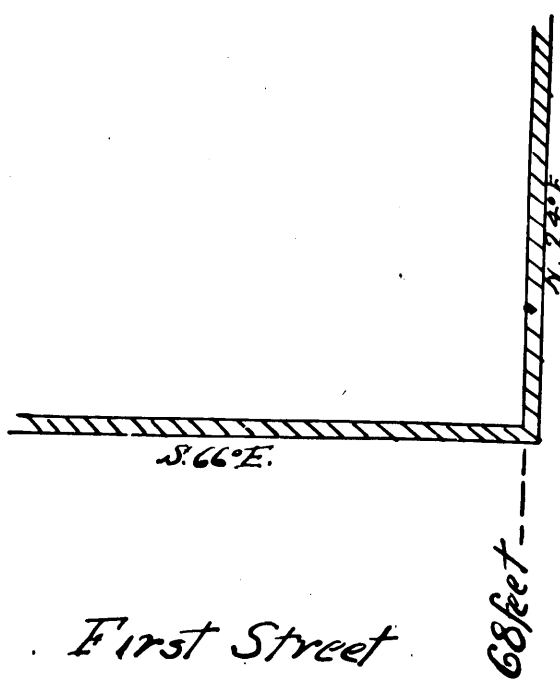
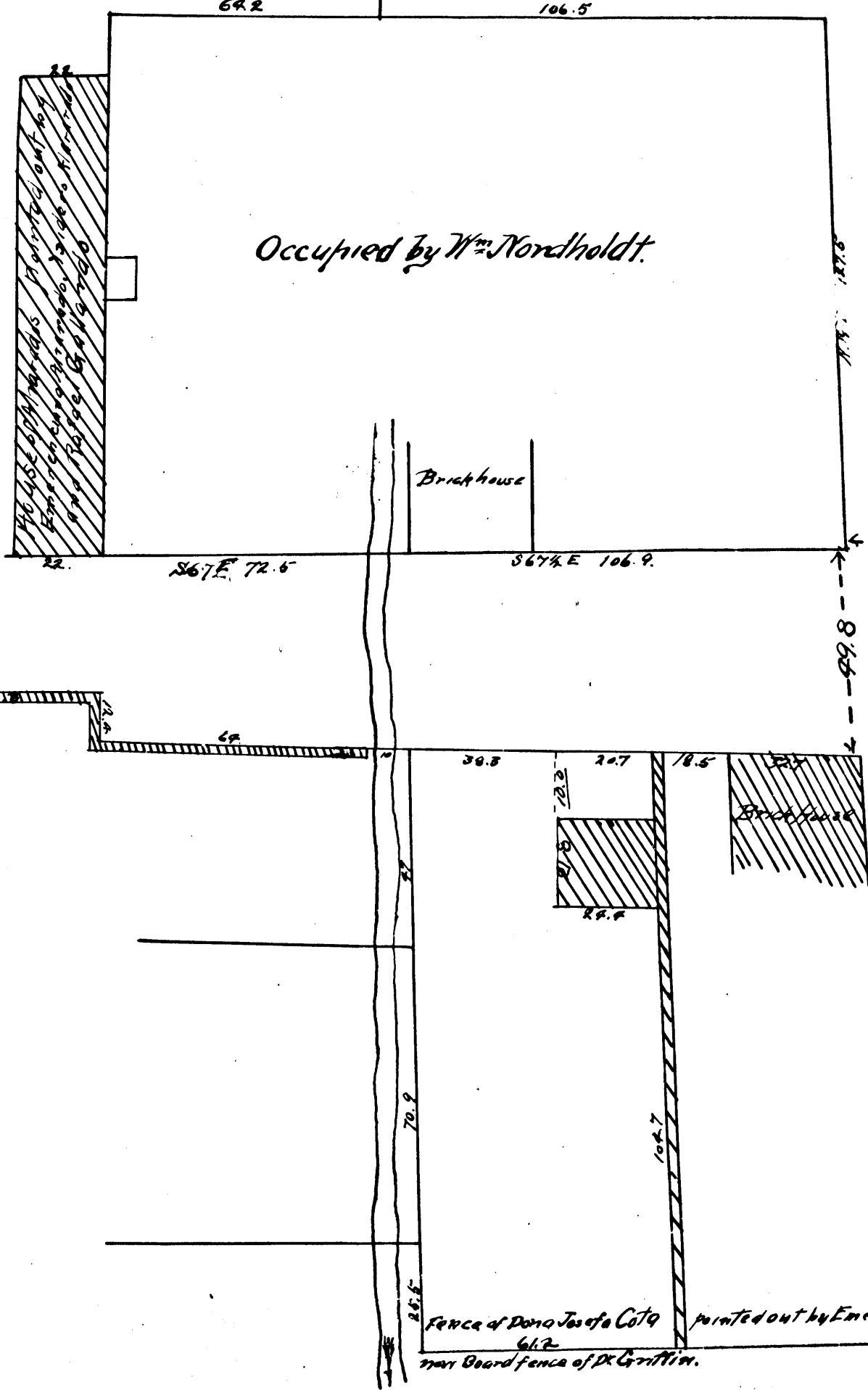
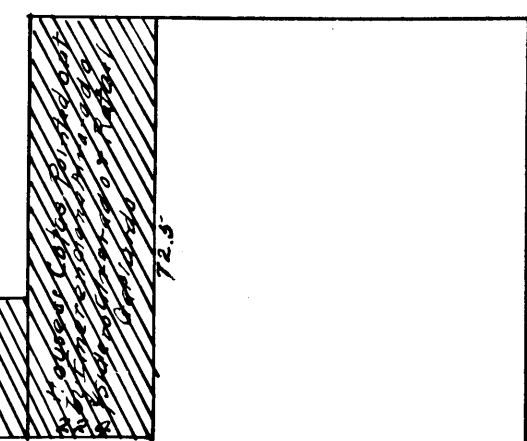
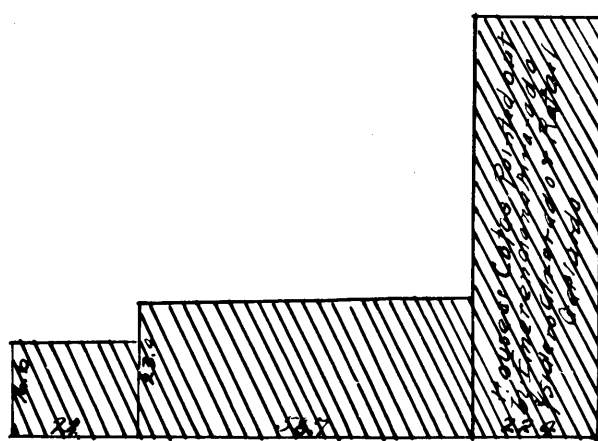
No. 1283

PLAT

of a

Survey made on the 9th of February 1867 on request of Ch^s V. Howard Esq
showing
the relative position and distances of the houses of Alvarados and Cotas and the
respective Documents of the Ayuntamiento of Los Angeles in the matter of the Grant
60 Varas in Depth, to Mariano B. Poldan, on the 26th of June 1847, as per
Emerenciana Alvarado
Ysidoro Alvarado
Rafael Gallardo.

Magnetic Meridian



First Street

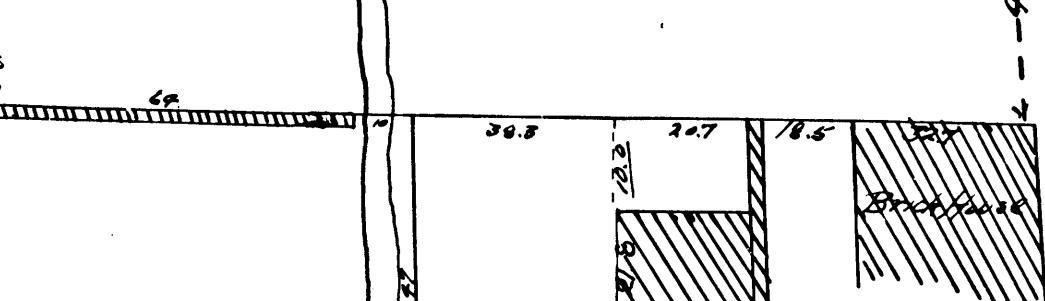
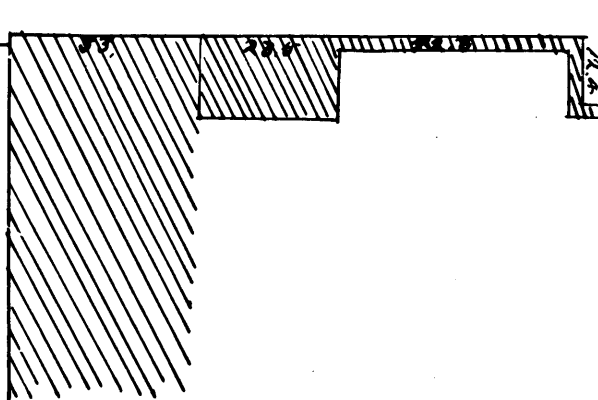
68 feet

S 66° E 110.5 feet



Barney

Main Street



C.F. 19

2

Scale of 1 inch to 40 feet
The courses are magnetic.

District Court
No. 128