

CLERKS FILED MAP NO. 25
DISTRICT COURT CASE NO. 1885

DISTRICT COURT CASE NO. 1885
MAP NO. 25

Exhibit A

LA MERCED

POTRERO DE FELIPE LUGO

LA PUENTE

T.11 S. R.11 W.

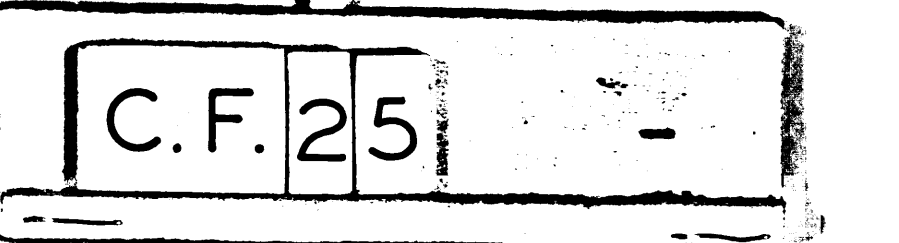
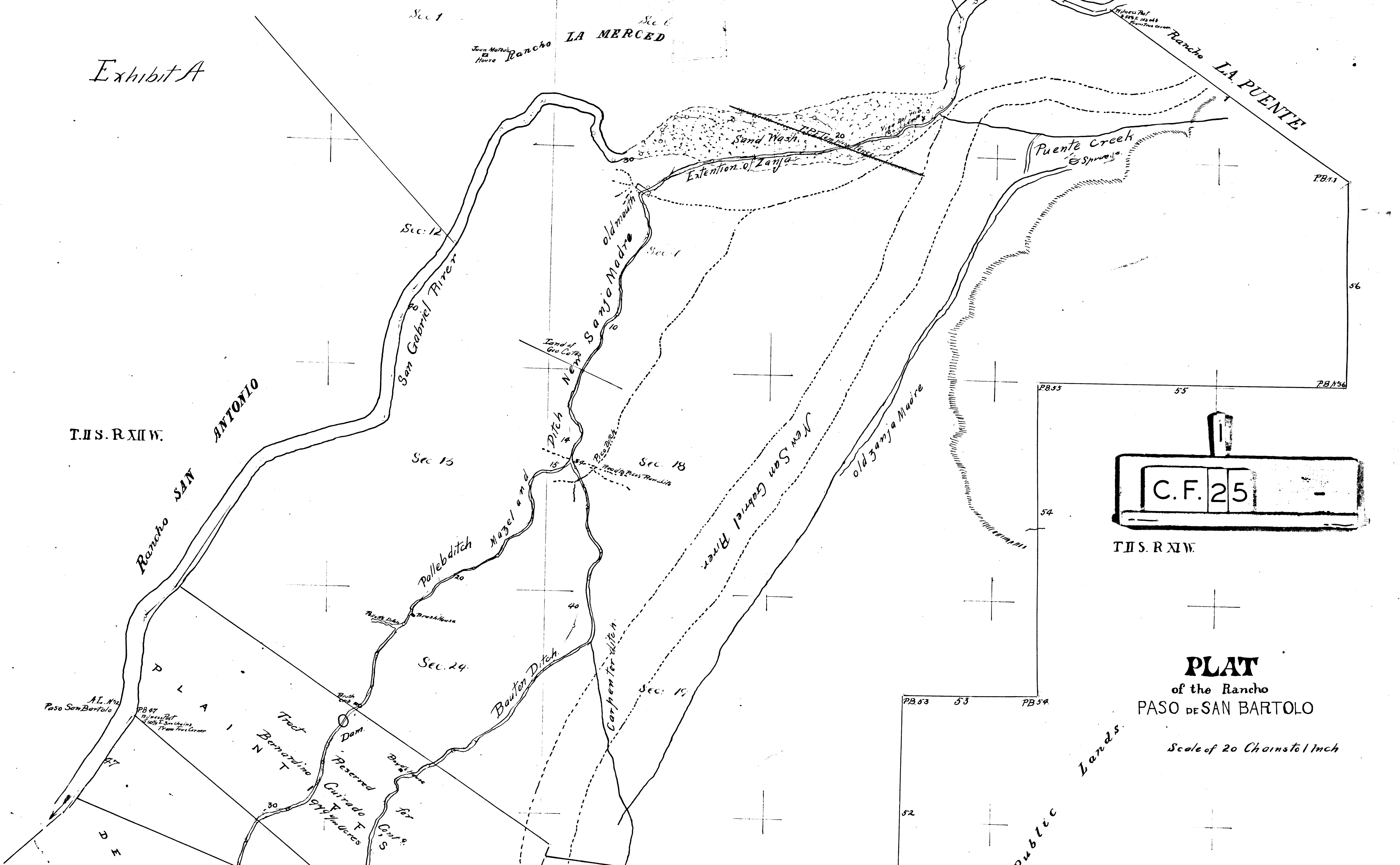
Rancho SAN ANTONIO

T.11 S. R.11 W.

PLAT
of the Rancho
PASO DE SAN BARTOLO

Scale of 20 Chains to 1 inch

Public Lands



T11S. R11W.

Rancho SAN ANTONIO

Sec. 12

Sec. 15

Sec. 24

Sec. 25

Sec. 18

Sec. 19

Sec. 30

San Gabriel River

New San Gabriel River

old Sanja Madre

old Sanja Madre

Pollebditch

Barton Ditch

Carpen ter ditch

Mazel and

Land of Geo Cotta

Ditch

Reserch

Tract of Blas Paredita

Tract Bonardino

Tract Reserved for Guirado F. Cuadras

Tract Reserved for Juquina Sepulveda Containing 240 Acres.

Pollavero + Colimas

Barton's Tract

Thompson Tract

Carpen ter House

Traserra's House

Traserra's House

T11S. R11W.

PLAT of the Rancho PASO DE SAN BARTOLO

Scale of 20 Chains to 1 Inch

Public Lands

Area of Mazeland Ditch 16.0.1

District Court No. 1492

2

C.F. 25

SECTION 25 ON 11S

A.L. M. Paso San Bartolo

DISTRICT COURT CASE NO. 1492

CLERKS FILED MAP NO. 25

56

PB 55

PB 54

PB 53

PB 52

PB 51

PB 50