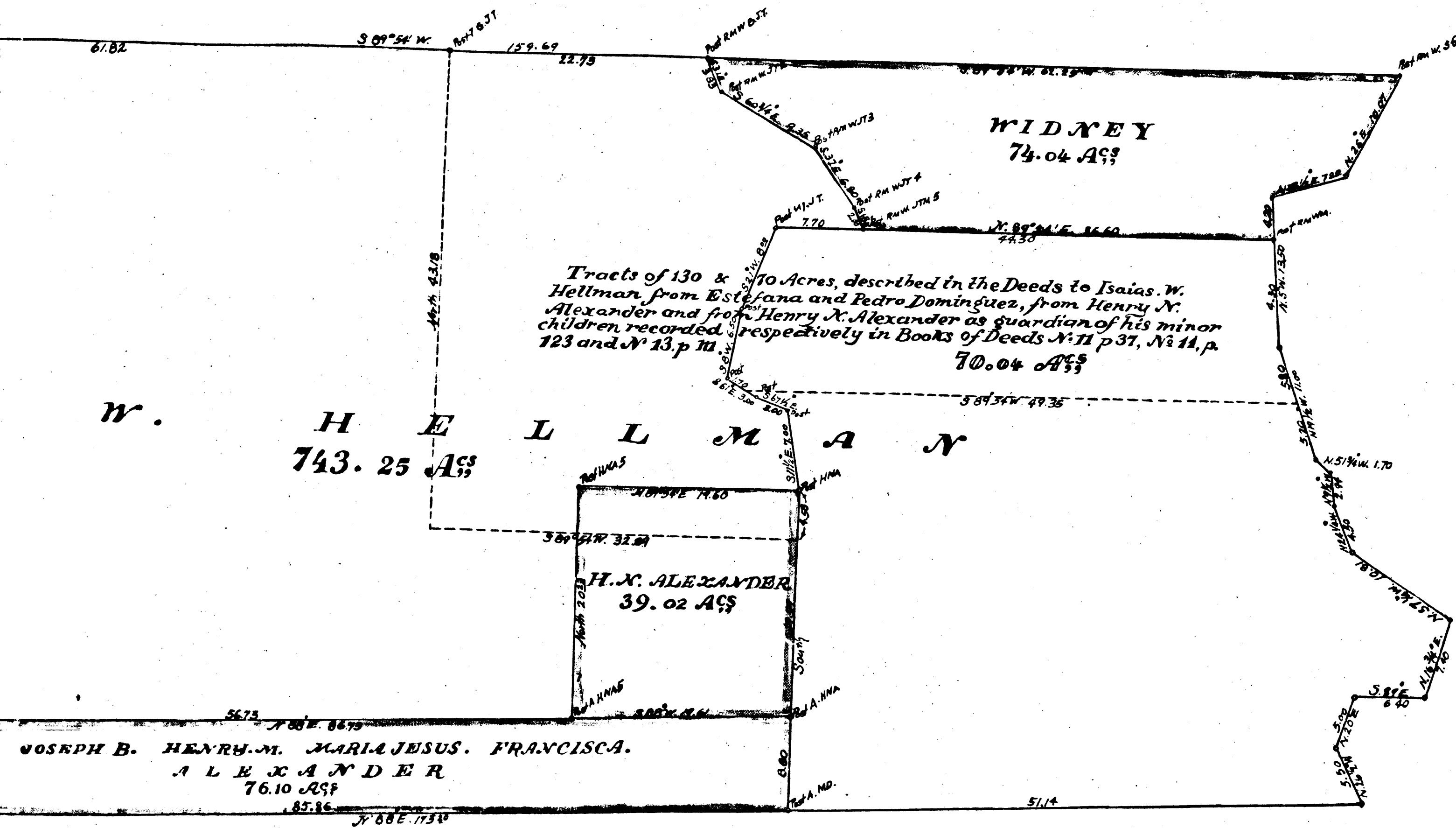
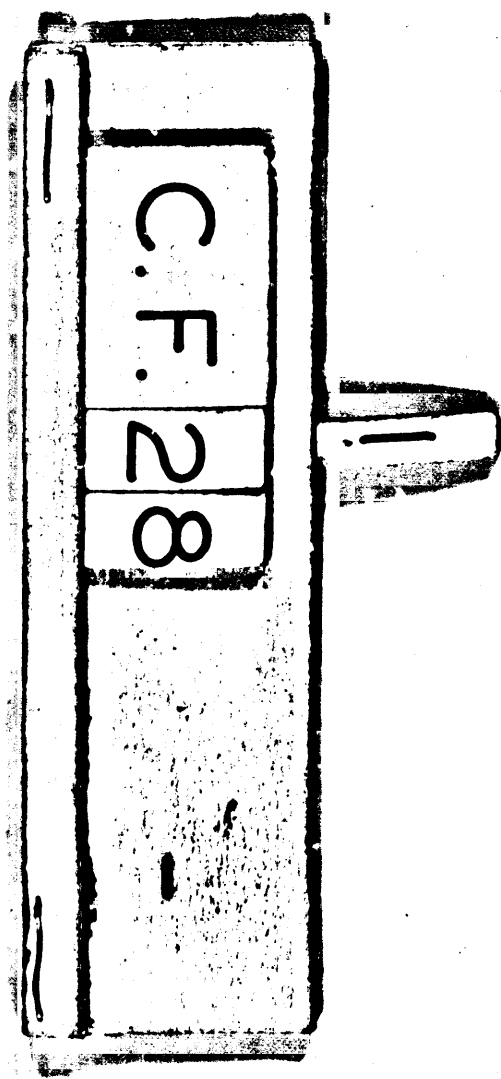


R. XIII. W.

G i b s o n T r a c t



D o m e i n u s



In the District Court of the 17<sup>th</sup> Judicial District of the State of California, in and for Los Angeles County  
 ISAIAS W. HELLMAN Plaintiff } #1694  
 HENRY N. ALEXANDER et al. Defendants }

I, the undersigned Referee in Partition, certify that the within Map exemplifies the Division made by me, and is the Map referred to in my report in the above entitled Cause.

Los Angeles, January 31<sup>st</sup> 1871.

Frank Lecourveur  
 County Surveyor of Los Angeles County

District Court  
 No. 1694

T e m p l e and

<p><b>Tract A</b> Allotted to Joseph B. Henry M. Maria Jesus and Francisca Alexander Minors containing: 3.02 Acs</p>
<p><b>Tract B.</b> Allotted to Henry N. Alexander containing: 1.43 Acs</p>
<p><b>Tract C.</b> Allotted to Joseph B. Henry M. Maria Jesus and Francisca Alexander Minors containing: 2.67 Acs</p>

SCALE 10 CHAINS PER INCH  
Variation 14°45' East.  
True Meridian Courses.

AREA	
Joseph B	76.10
Henry M	3.02
Maria Jesus	2.67
Francisca	81.79 Acs
Henry N Alexander	40.45 "
I. W. Hellman	953.74 "
L.A. & S.P. / F.F. CO	10.83 "
<b>Total Area</b>	<b>1086.81 Acs</b>

